



HOLSTEIN
 **PLAZA**

online heifer sale

Monday, December 7 through Thursday, December 17, 2015
www.holsteinplaza.com | Auction closes at 4:00 p.m. (EST)



photos © Han Hopman



Sourcing Genetics for the World



AMS Genetics can source embryos to fit your individual requirements.
If you want production or shine in the show ring AMS Genetics is your starting point!

EXAMPLES OF DONOR COWS THAT AMS GENETICS IS WORKING WITH



EO Siemers Ashlyns Angel EX-96 3E
Four-Time All-American Nominee
Famous Stormatic daughter of Ashlyn



ND-Druvale O Scarlet-Red
GTPI+2458 +2.71T / gRZG+160
No. 1 Red Olympian on RZG



Josey-LLC Dkr Spice-Red
GTPI+2449 +590NMS +1.68T
No. 6 Red Heifer in the U.S.



Butz-Butler Gold Barbara EX-92
All-American 2012, 2013, 2014
Granddaughter of BARBIE

AMS Genetics has 30 years experience in the sourcing and exportation of Holstein embryos to the world. Although many things changed over the 30 years, one thing is still constant, our commitment to our clients to provide great service and to locate and obtain the genetics that they need. If you are looking to purchase embryos to introduce new genetics into your A.I. company or your herd, AMS Genetics will be your partner in sourcing the U.S. genetic base and handling the exportation. We can adapt our selection to emphasis your selection criteria, so we focus on the genetics that will do the best job for your goals.

Services:

- Sourcing and locating embryo donors
- Herd visitation selection tours
- Contracting of donors
- Complete coordination of: embryo recovery, health certification and documentation, inland assembly and international shipment insurance
- Housing and management assistance for cattle housed in the United States
- Sire sourcing/selection for A.I. companies worldwide
- Commercial dairymen sire sourcing and selection



CONTACT INFO

AMS Genetics International LLC
Mail address: PO Box 12 | Fairplay, MD 21733-0012 USA
Office Phone: +001 240-329-0169
Steve Mower Cell: +001 240-520-5906
Email: steve.mower@amsgenetics.com

www.amsgenetics.com



www.holsteinplaza.com

ONLINE HEIFER SALE | DEC. 7-17, 2015

HOW DOES THE SALE WORK:

This is a traditional English auction, which starts low and allows bidders to place progressively higher bids. Each lot closes at staggering times (every 3 minutes) starting at 4:00 p.m. (EST) on Thursday, December 17, and the highest bidder then wins the lot.

There are two ways of bidding - either directly through the internet (www.holsteinplaza.com) or by contacting one of the sale staff members listed. All bids are made in U.S. dollars.

When you place a bid, you enter the maximum amount you're willing to pay for the lot. The other bidders and the sale organization will not be able to see your maximum bid. Through this Proxy bidding system, the Holstein Plaza auction system will increase your bid to the next lowest price when another user bids on the same item. The proxy bidding process continues until your maximum bid amount is reached or the auction ends. Every bidder is bound to his bid. The sale is using the popcorn bid system/5-minute rule. Until that moment bids will be accepted.

All lots sell with reasonable starting bid. The bid increments will be as follows: < \$10,000 - \$250; \$10,000-\$20,000 - \$500; \$20,000-\$50,000 - \$1,000; \$50,000-\$100,000 - \$2,000 and > \$100,000 - \$5,000

Please refer to the terms and conditions in the back of your sale catalog for complete details.

sale managed by:



THE BUYING STOP FOR DAIRYMEN AROUND THE WORLD

P.O. Box 12, Fairplay, Maryland 21733-0012 USA

Ph. 240-329-0169 | Fax 240-469-4231

info@holsteinplaza.com | www.holsteinplaza.com

SALES STAFF:

HOLSTEIN PLAZA

Jennifer Dingbaum +1 320-250-2412

jennifer.dingbaum@holsteinplaza.com

Steve Mower +1 240-520-5906

steve.mower@amsgenetics.com

Hendrik Albada +1 240-520-1566

hendrik.albada@holsteinplaza.com

Amanda Hauck +1 570-765-0536

amanda.hauck@amsgenetics.com

Ray LeBlanc +1 802-249-2155

Nick Raggi +1 443-762-8338

Bill Rauen +1 563-607-0694

Austin Yoder +1 478-244-9063

Australia

Declan Patten 011 61499 949 292

EUROPE

Jan de Vries +31 (0)6 26250502

jandevries@diamond-genetics.nl

Arjan van der Vlis +31 (0)6 43985150

arjan@eurogenes.nl

Alison Maddrell +44 77 48960267

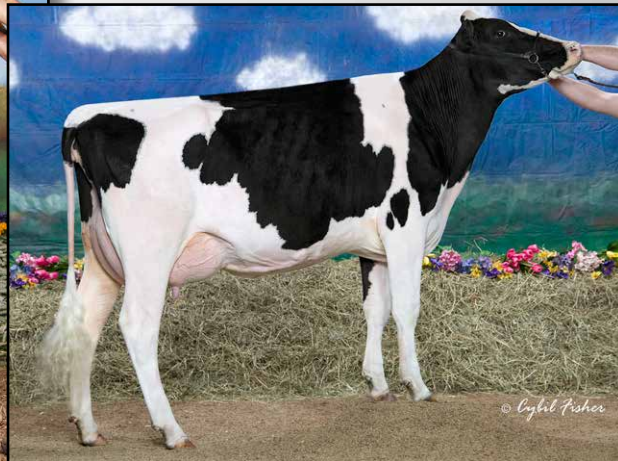
alison@diamondgenetics.co.uk



MANAGEMENT/TRANSPORT:

All auction sales will be handled through AMS Genetics International. AMS will also assist as needed in transport coordination. Transport is the cost of the buyer and will not be allowed until payment has been made. For foreign buyers, AMS Genetics can assist with housing and management of purchases.

HOUSING CONTACT: Steve Mower 240-520-5906



SAVAGE-LEIGH SID LOUISA VG-88
LOT 1

SAVAGE-LEIGH DUNDEE LUCY EX-93 2E
DAM OF LOT 1

LOT 1

SAVAGE-LEIGH SID LOUISA

Holstein Plaza Contacts:

Steve Mower +1 240-520-5906
Jennifer Dingbaum +1 320-250-2412
Hendrik Albada +1 240-520-1566
Amanda Hauck +1 570-765-0536

840 3007810345 Very Good-88 EEV+V at 3-00

Born: 01-September-2011
2-05 2x 365d 28820 4.4 1254 3.7 1062

• 1st Sr. 2-Yr-Old Cow, Premier Nat'l Jr. Holstein Show 2014
Bred 9/19/2015 to Mr Savage Quality Linger-ET

Pine-Tree Sid-ET

62175895 *TY
PTA -464M +5F -8P 99%R 12/15
PTA -46NM\$ -1.5PL 2.84SCS
PTA +2.15T +1.97UDC +.08FLC
GTPI +1621G

Savage-Leigh Dundee Lucy-ET

61604293 Excellent-93 2E EEEEE
1-11 2x 365d 32990 3.8 1246 3.2 1070
3-02 2x 365d 35250 3.8 1329 3.1 1095
6-05 2x 365d 33830 3.7 1259 2.9 990
Life: 2009d 189840 3.8 7121 3.2 6086

Maternal sister to Savage-Leigh Louise

Savage-Leigh Licorice-ET

EX-92 GMD DOM
4-02 2x 365d 51220 4.3 2179 3.3 1693
Life: 1018d 113740 4.4 4968 3.4 3858
• Nominated All-American 2006
• HHM All-American 5-Yr Old Cow 2006
• Nom All-American Produce 2011 & 2012

Regancrest-Mr Drham Sam-ET

207184639 *TR *TV *TL
PTA -459M +3F -10P 99%R 12/15
PTA +.48T +.33UDC +.89FLC
GTPI +1477G

Pine-Tree Finley Minnie-ET

61733050 Excellent-90 DOM
2-00 3x 305d 25080 3.4 858 3.3 823

Regancrest Dundee-ET

127640114 *TV *TL *TY
PTA -660M -36F -17P 99%R 12/15
PTA +1.12T +1.40UDC +.09FLC
GTPI +1382G

Savage-Leigh Louise-ET

60317050 Excellent-94 2E GMD DOM
2-03 2x 365d 36710 3.9 1417 3.1 1134
3-11 2x 365d 44340 3.8 1677 3.0 1315
6-03 2x 365d 48600 4.4 2148 3.0 1434
Life: 1679d 183660 4.0 7370 3.1 5717

3rd thru 8th Dams

Savage-Leigh Bellwood Linda

EX-92 2E GMD DOM
2-10 2x 365d 40240 5.8 2349 3.4 1358
Life: 1312d 126760 5.2 6576 3.2 4076
• Nom All-American Jr. 3-Year-Old 1999
• Nom Global Cow of the Year 2005

Savage-Leigh Star Linda-ET VG-87 GMD

2-02 2x 365d 30890 4.0 1236 3.1 952

Savage-Leigh Glenview Linda

EX-90 EVVE GMD DOM
6-08 2x 365d 41820 4.6 1936 3.0 1247
Life: 1892d 150300 4.4 6636 3.2 4813

Savage-Leigh Lindas Chairman GP-84

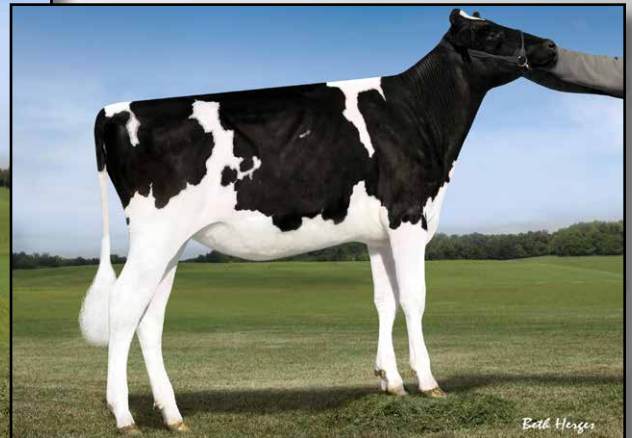
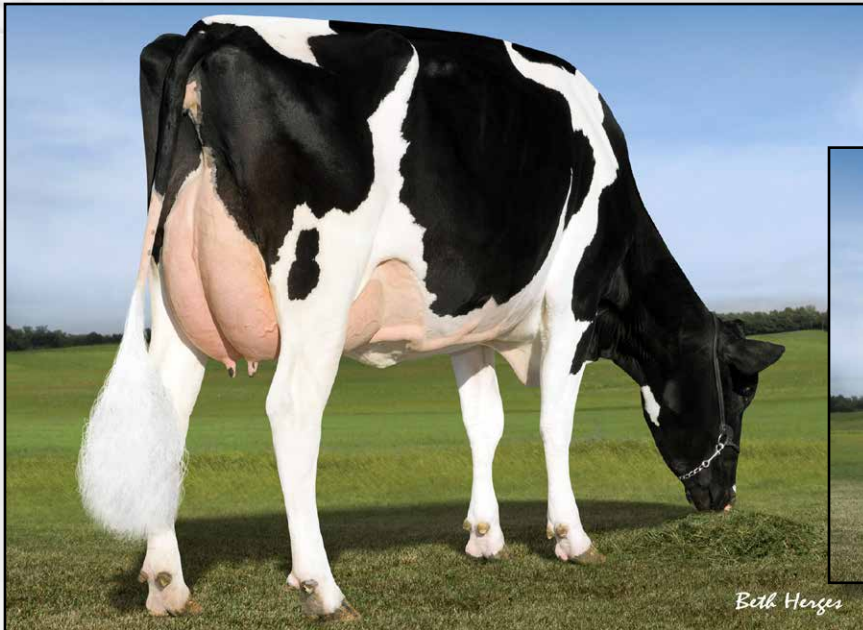
5-10 2x 365d 30620 3.8 1167 3.3 1013
Life: 1972d 121550 3.9 4718 3.3 4013

Savage-Leigh Creek Lydia VG-88

4-11 2x 344d 16390 4.2 685 3.1 511

Savage-Leigh Kate Linda VG-85

6-01 2x 305d 19940 4.0 793



PINE-TREE 2149ROBST 4846
2ND DAM OF LOT 2

VIEW-HOME MCC ALABAMA
DAM OF LOT 2

LOT 2

VIEW-HOME SNAP DRAGON

840 3132109793

Born: 19-June-2015

Holstein Plaza Contacts:

Steve Mower +1 240-520-5906
Jennifer Dingbaum +1 320-250-2412
Hendrik Albada +1 240-520-1566
Amanda Hauck +1 570-765-0536

USA	Milk	Fat	Prot	SCS	DPR	PL	FLC	UDC	PTAT	DCE	NM	GTPI
12/15	+1059	+82	+43	2.79	+0.8	+6.5	+2.80	+2.52	+2.80	5.0%	+775	+2659

Seagull-Bay Silver-ET

72254526 *TV *TL *TY *TD
PTA +1715M +102F +57P 78%R 12/15
PTA +4.6PL 2.88SCS -1.00DPR
PTA +2.57T +2.05UDC +2.47FLC 78%R
GTPI +2630G

View-Home Mcc Alabama

72456685 Born: January 28, 2013
GTPI+2603 +1253M +53F +39P +2.80T
• GENETIC GIANT
• Offspring up to GTPI+2800
• Her alta 1st Class sold for \$103,000 at the National Convention Sale 2015!
• Due January 2016 and looks great!

Mountfield SSI Dcy Mogul

3006972816 *TR *TV *TL *TY *TD
PTA +1439M +90F +43P 99%R 12/15
PTA +2.57T +2.62UDC +2.64FLC
GTPI +2540G

Seagull-Bay Snow Darling

70640273 Very Good-86 DOM
2-02 2x 365d 35620 3.5 1257 3.0 1077

De-Su Bkm McCutchen 1174

69990138 *TV *TL *TY *TD
PTA +920M +88F +34P 99R 12/15
PTA +3.14T +2.85UDC +2.47FLC
GTPI +2486G

Pine-Tree 2149Robst 4846

69804610 Very Good-86-2YR DOM
2-04 2x 365d 32001 4.7 1520 3.4 1097
• Huge Brood Cow
Several sons in A.I. including:

- View-Home Powerball P
- View-Home Monterey
- View-Home Missouri
- View-Home Cashflow

3rd thru 10th Dams

Pine-Tree Zenith Sheen

VG-87 VG-MS DOM
1-11 3x 365d 27884 3.9 1091 3.3 908

- Maternal sister to Ammon-Peachey Shauna

Pine-Tree Martha Sheen-ET

VG-86 VG-MS DOM
1-11 3x 365d 31210 4.2 1305 3.3 1027

Pine-Tree Missy Martha-ET VG-86 DOM

2-02 3x 365d 34730 3.6 1266 3.1 1070

Wesswood-HC Rudy Missy-ET

EX-92 3E DOM
4-11 3x 365d 40880 4.1 1665 3.2 1308

Life: 1262d 119610 4.1 4885 3.2 3804

Wesswood Elton Mimi EX-90 GMD DOM

3-05 2x 365d 35380 3.3 1160 3.2 1121

Wesswood Mandingo Ivy VG-87 VEEVV

6-05 2x 365d 36330 3.6 1305 3.0 1087

Life: 1835d 144060 3.4 4933 3.1 4412

Wesswood Astro Matt Esther

VG-87 GMD DOM
6-08 2x 365d 31860 3.5 1125 3.1 982

Life: 1847d 140110 3.6 5029 3.2 4424

Wesswood Bell Claudette

VG-87 GMD DOM
9-10 2x 365d 38810 3.6 1383 2.9 1140

Life: 3634d 280980 3.6 9997 3.1 8625



SNOWBIZ SYMPATICO SOFIA-RED
DAM OF LOT 3



GEN-I-BEQ SNOWMAN SUMMER *RC VG-85-2YR
2ND DAM OF LOT 3

LOT 3

MS SOFIAS DELTA SPIRIT *RC

Holstein Plaza Contacts:

Steve Mower +1 240-520-5906
Jennifer Dingbaum +1 320-250-2412
Hendrik Albada +1 240-520-1566
Amanda Hauck +1 570-765-0536

840 3133063223

Born: 11-October-2015

RZG Test pending, results expected in January 2016

USA	Milk	Fat	Prot	SCS	DPR	PL	FLC	UDC	PTAT	DCE	NM	GTPI
12/15	+1870	+80	+61	3.04	+0.7	+5.1	+1.47	+2.13	+2.42	4.6%	+760	+2631

Mr Mogul Delta 1427

72128216 *TV *TL *TY *TD
PTA +1615M +89F +53P 78R 12/15
PTA +8.1PL 2.83SCS +1.6DPR 5.6%DCE
PTA +2.10T +1.87UDC +1.50FLC 78R 12/15
GTPI +2712G

Snowbiz Sympatico Sofia-Red-ET

CAN 108502624 *TY Born: July 11, 2013
GTPI+2479 +1610M +63F +51P +2.59T
• Beautiful heifer, due December 2015
• Former #1 GTPI Red Heifer!
• Potential 13th Generation VG or EX!

Mountfield SSI Dcy Mogul

3006972816 *TR *TV *TL *TY *TD
PTA +1439M +90F +43P 99%R 12/15
PTA +2.57T +2.62UDC +2.64FLC
GTPI +2540G

Miss OCD Robst Delicious-ET

3006989479 VG-87 VG-MS DOM
2-05 2x 305d 25780 3.5 908 3.3 841

Dymenthalm S Sympatico-ET

CAN 11004723 *RC *TV *TL *TY
PTA +1773M +73F +45P 96%R 12/15
PTA +1.85T +1.42UDC +1.22FLC
GTPI +2371G

Gen-I-Beq Snowman Summer-TW-ET

CAN 106807371 Very Good-85-2YR-CAN
2-01 2x 358d 30198 3.5 1051 3.1 934
Dam of:
223HO00017 Snowbiz Symion *RC one of
the highest Red Carrier bulls in the breed!

3rd thru 12th Dams

Gen-I-Beq Bolton Secretly *RC

VG-87-CAN 3*
2-01 2x 365d 30474 4.4 1327 3.4 1043

• 1 Superior Lactation

Gen-I-Beq Goldwyn Secret

VG-87-CAN 11*
5-05 2x 365d 30573 4.5 1389 3.4 1038

Gen-I-Beq Durham Sherry VG-87-CAN 8*

5-02 2x 365d 40036 3.9 1574 3.2 1268

Glen Drummond Splendor

VG-86-2YR-CAN 38*
4-10 2x 314d 26510 4.2 1124 3.2 840

Glen Drummond Aero Flower

VG-88-CAN 18*
2-03 2x 326d 25622 4.0 1032 3.4 882

Glen Drummond Shower EX-CAN 14*

4-10 2x 365d 28583 4.8 1380 3.6 1016

Glen Drummond S C Jo Beth

EX-2E-CAN 7*
Life (6 Lacs): 141637 4.2 5994 3.2 3593

• Grand Champion Brant-Wentworth 1984

Glen Drummond Matt Beth VG-85 4*

11-10 2x 365d 25038 3.7 935

Life (5 Lacs): 105953 4.1 4295

Glen Drummond Marquis Beth VG-CAN

Life (8 Lacs): 112688 4.2 4766

Ferglynn Rag Apple Bertha VG-CAN 3*



OCD SUPERSIRE EMBARK VG-87-2YR VG-MS DOM
DAM LOT 4

LOT 4

PINE-TREE 8602 LOTT 6568

Holstein Plaza Contacts:

Steve Mower +1 240-520-5906
Jennifer Dingbaum +1 320-250-2412
Hendrik Albada +1 240-520-1566
Amanda Hauck +1 570-765-0536

USA 74024490

Born: 13-December-2014

DONOR DAM

Made 19 Oocytes 12/1/2015

USA	Milk	Fat	Prot	SCS	DPR	PL	FLC	UDC	PTAT	DCE	NM	GTPI
12/15	+966	+86	+40	2.69	+1.5	+8.2	+1.22	+1.61	+2.19	5.2%	+816	+2608

Rockymountain Lottomax-ET

CAN 11445882 *TR *TV *TL *TY *TD
PTA +742M +62F +22P 79%R 12/15
PTA +5.8PL 2.70SCS +2.2DPR 7.1%DCE
PTA +2.52T +2.15UDC +1.43FLC 77%R
GTPI +2432G

OCD Supersire Embark-ET

3010975399 Very Good-87-2YR DOM
GTPI+2464 +1692M +75F +51P +1.02T
2-00 311d 27240 3.9 1060 3.1 841
• One of the highest scored two-year-old
Supersire daughters in the breed!
• One of the highest NM\$ Cow, Locator List
• Due January 2016 with 2nd calf

Amighetti Numero Uno-ET

ITA 17990915143 *TV *TL *TY *TD
PTA -329M +61F +3P 99%R 12/15
PTA +2.30T +2.24UDC +1.57FLC
GTPI +2397G

Rockymountain Super Leita-ET

CAN 10945258 Very Good-85-CAN
1-11 2x 365d 25800 3.7 959 3.1 788

Seagull-Bay Supersire-ET

69981349 *TV *TL *TY *TD
PTA +2359M +110F +71P 99R 12/15
PTA +1.60T +.68UDC +.55FLC
GTPI +2719G

OCD Freddie Everlast-ET

3008315284 Very Good-85 VG-MS

3rd thru 11th Dams

OCD Planet Embassy VG-85

3-01 3x 365d 37350 3.1 1164 3.0 1133
Kings-Ransom PMR Embassy-ET EX-91
4-00 3x 305d 35500 4.3 1532 3.3 1159
Life: 1115d 107060 4.2 4481 3.3 3515

BDG Genetics Add Elda-ET

VG-85 GMD DOM
6-00 3x 365 43640 3.2 1396 2.8 1236
Life: 1694d 164760 3.2 5241 3.0 4864

Shadycrest-H Rick Econo-ET VG-87 DOM

2-05 365 28150 4.0 1118 3.4 963

Shadycrest Roebuck Ellie VG-85 DOM

3-08 365 47220 3.6 1677 3.3 1548

Life: 193090 3.2 6203 3.2 6123

Shadycrest Elton Loretta VG-85 DOM

2-01 360 25510 3.7 955 3.5 891

Shadycrest Lorna Cleitus

VG-85 GMD DOM
5-01 365 38150 5.2 1992 3.8 1435

Life: 110560 4.8 5271 3.6 4031

Shadycrest Laura Walkway Mark VG-85

3-11 365 22810 4.4 1005 3.5 794

Shadycrest Mowry-C Fleetridge

VG-87 DOM

Life: 133650 4.1 5417 3.1 2812



MS D APPLE DANIELLE-RED EX-94 95-MS
DAM OF LOT 5

KHW REGIMENT APPLE-RED EX-96 3E DOM
3RD DAM OF LOT 5

LOT 5

SHE-KEN UNO DARLING *RC

USA 72713023

Born: 2-March-2015

• Full sister to new release young sire She-Ken Uno DANIEL *RC at St Jacobs

Holstein Plaza Contacts:

Steve Mower +1 240-520-5906
Jennifer Dingbaum +1 320-250-2412
Hendrik Albada +1 240-520-1566
Amanda Hauck +1 570-765-0536

USA	Milk	Fat	Prot	SCS	DPR	PL	FLC	UDC	PTAT	SCE	NM	GTPI
12/15	-127	+14	-1	2.96	-.3	2.0	+1.55	+3.14	+2.82	6.2%	+203	+2030

Amighetti Numero Uno

ITA 17990915143 *TV *TL *TY *TD
PTA -329M +61F +3P 99R 12/15
PTA +4.6PL 2.57SCS +3.6DPR 6.2%DCE
PTA +2.30T +2.24UDC +1.57FLC 99R 12/15
GTPI +2397G

Ms D Apple Danielle-Red

69822207 Excellent-94-USA 95-MS
GTPI+1919 +3.00T +3.01UDC +1.63FLC
3-11 2x 305d 29140 3.8 1112 3.4 997
• Sr & Res Grand, All-American R&W 2015
• 1st 4-Yr-Old, All-American R&W 2015
• Grand Champ, NY Spring Int'l 2015
• HM All-American Sr. 3-Yr-Old 2014
• 3rd Sr. 3-Yr-Old Int'l R&W Show 2014
• NASCO Type & Production Winner 2014
• 1st Sr. 3-Yr-Old All-American R&W 2014
• Gr Champ All-American R&W Show 2014
• Nominated All-American Sr. 2-Yr-Old 2013

Long-Langs Oman Oman

135746776 *TV *TL *TY *TD
PTA +462M +38F +43P 99R 12/15
PTA +0.49T +0.54UDC +0.01FLC 99R
GTPI +2113G

Amighetti Shottle Ave

ITA 17990346074 Very Good-89
2-00 2x 305d 28426 4.1 1171 3.5 996

Scientific Destry *RC

138122625 *RC *TV *TL *TY
PTA -675M -21F +0P 99%R 12/15
PTA +2.04T +2.18UDC +0.51FLC
GTPI +1958G

Ms Delicious Apple-Red

139236776 Excellent-94 2E EEEEE *TV
2-02 2x 365d 26460 3.9 1036 3.3 871
4-03 2x 365d 37621 3.7 1395 3.0 1156
5-11 2x 365d 40660 3.9 1570 3.4 1408
• Res. All-American R&W Aged Cow 2014
• Member AA R&W Dam/Daughter 2014
• Nom All-American Jr. 2-Yr-Old 2010
• Dam of: Mr D Apple Diamondback *RC

3rd thru 9th Dams

KHW Regiment Apple-Red

EX-96 3E DOM
9-01 2x 365d 36750 4.3 1582 3.3 1211
Life: 2337d 195430 4.7 9265 3.6 6946
• 2013 HI Red Impact Cow of the Year
• All-American R&W 125,000 Cow 2013
• Res. Sr. & Res. Grand Int'l R&W Show 2013
• Grand Champion Int'l R&W Show 2011
• All-American R&W Aged Cow 2011
• HI World Champion R&W Cow 2010
• Unanimous All-American Jr-2-Yr-Old 2006

Kamps-Hollow Altitude-ET

EX-95 2E DOM
7-00 2x 305d 34450 4.5 1562 3.4 1163
• Red Impact Cow of the Year 2009
Clover-Mist Alisha-ET *RC EX-93 3E DOM
8-07 2x 365d 36920 4.2 1553 3.4 1258
Life: 2999d 226470 4.7 10659 3.6 8149

Clover-Mist Augy Star-ET *RC

EX-94 4E DOM
7-10 3x 365d 43140 5.0 2136 3.3 1421
Life: 2486d 206250 4.7 9793 3.5 7187
D-R-A August EX-96 EEEE 4E DOM
8-05 2x 365d 27460 4.3 1187 3.2 871
Life: 3443d 190200 4.4 8281 3.3 4457
• Nominated All-American Aged Cow 1986
D-R-A Ideal Precious Leader EX-90 2E
7-06 2x 358d 20090 3.9 787 3.4 675
D-R-A Princess Lad Leader EX-90 3E
9-05 2x 305d 19160 4.2 809



PINE-TREE MISSY MIRANDA VG-86 DOM
3RD DAM OF LOT 6



WESSWOOD-HC RUDY MISSY EX-92 3E DOM
4TH DAM OF LOT 6

LOT 6

PINE-TREE 5961 DELTA 6833

840 3132116685 Born: 01-September-2015

+176 GTPI over Parent Average!

Holstein Plaza Contacts:

Steve Mower +1 240-520-5906
Jennifer Dingbaum +1 320-250-2412
Hendrik Albada +1 240-520-1566
Amanda Hauck +1 570-765-0536

USA	Milk	Fat	Prot	SCS	DPR	PL	FLC	UDC	PTAT	DCE	NM	GTPI
12/15	+1536	+95	+50	2.87	+1.6	+7.5	+1.21	+1.30	+1.69	5.5%	+862	+2623

Mr Mogul Delta 1427

72128216 *TV *TL *TY *TD
PTA +1615M +89F +53P 78R 12/15
PTA +8.1PL 2.83SCS +1.6DPR 5.6%DCE
PTA +2.10T +1.87UDC +1.50FLC 78R 12/15
GTPI +2712G

Pine-Tree 4811 Petro 5961 *PO

71859539 *PO
GTPI+2227 +836M +61F +39P +48T
1-10 84d 6879 3.9 265 3.1 214 inc.
• Fresh and doing well
• Last test 85 lbs.

Mountfield SSI Dcy Mogul

3006972816 *TR *TV *TL *TY *TD
PTA +1439M +90F +43P 99%R 12/15
PTA +2.57T +2.62UDC +2.64FLC
GTPI +2540G

Miss OCD Robst Delicious-ET

3006989479 VG-87 VG-MS DOM
2-05 2x 305d 25780 3.5 908 3.3 841

Welcome Super Petrone

USA 69207641 *TR *TV *TL *TY *TD
PTA +645M +39F +9P 99R 12/15
PTA +1.21T +1.46UDC +1.26FLC
GTPI +2428G

Pine-Tree 1258Signf 4811-ET

69804575 Very Good-85
2-08 3x 305d 29520 4.0 1173 3.4 1007
3-08 3x 305d 28240 3.8 1084 3.6 1009
• Sons by Mayfield at Alta & Accelerated

Maternal sister to:

Mountfield Marsh Maxine VG-88 DOM

3rd thru 8th Dams

Pine-Tree Missy Miranda
VG-86 VVV+V DOM
3-08 3x 365d 35550 4.9 1730 3.9 1392
Wesswood-HC Rudy Missy-ET
EX-92 3E DOM
4-11 3x 365d 40880 4.1 1665 3.2 1308
Life: 1262d 119610 4.1 4885 3.2 3804
Wesswood Elton Mimi EX-90 GMD DOM
3-05 2x 365d 35380 3.3 1160 3.2 1121
Wesswood Mandingo Ivy VG-87 VEEVV
6-05 2x 365d 36330 3.6 1305 3.0 1087
Life: 1835d 144060 3.4 4933 3.1 4412
Wesswood Astro Matt Esther
VG-87 GMD DOM
6-08 2x 365d 31860 3.5 1125 3.1 982
Life: 1847d 140110 3.6 5029 3.2 4424
Wesswood Bell Claudette
VG-87 GMD DOM
9-10 2x 365d 38810 3.6 1383 2.9 1140
Life: 3634d 280980 3.6 9997 3.1 8625



AIJA SUPERSIRE MAKEA
DAM LOT 7

AIJA MAN O MAN NAOMI VG-85-3YR-CAN
2ND DAM TO LOT 7

LOT 7

THURLER DENVER LISE

CAN 12294934

Born: 4-October-2015

Holstein Plaza Contacts:

Steve Mower +1 240-520-5906
Jennifer Dingbaum +1 320-250-2412
Hendrik Albada +1 240-520-1566
Amanda Hauck +1 570-765-0536

USA	Milk	Fat	Prot	SCS	DPR	PL	FLC	UDC	PTAT	DCE	NMS	GTPI
12/15	+1714	+83	+56	3.02	+1.5	+6.3	+1.41	+1.58	+1.79	6.4%	+774	+2602
CAN	Milk	Fat	Prot	HL	SCS	Fert	CA	FLC	UDC	Conf.	Pro\$	GLPI
12/15	+2112	+95	+77	110	3.01	109	102	+8	+8	+7	\$2386	+3185

Mr Mogul Denver 1426-ET

72128215 *TV *TL *TY *TD
PTA +2170M +100F +66P 78%R 12/15
PTA +5.7PL 3.07SCS -0.4DPR
PTA +2.37T +2.03UDC +1.77FLC 78%R
GTPI +2681G

Aija Supersire Makea

11819995C Born: March 3, 2013
GTPI+2564 +1388M +70F +53P +1.59T
• Due February 2016
• Fantastic Testing Offspring on GTPI,
GPA-LPI and GRZG!
• Commander daughter sold for \$150,000
• Dam to the former #1 GPA-LPI Heifer
• Already six sons going to AI

Mountfield SSI Dcy Mogul

3006972816 *TR *TV *TL *TY *TD
PTA +1439M +90F +43P 99%R 12/15
PTA +2.57T +2.62UDC +2.64FLC
GTPI +2540G

Miss OCD Robst Delicious-ET

3006989479 VG-87 VG-MS DOM
2-05 2x 305d 25780 3.5 908 3.3 841

Seagull-Bay Supersire-ET

69981349 *TV *TL *TY *TD
PTA +2359M +110F +71P 99R 12/15
PTA +1.60T +.68UDC +.55FLC
GTPI +2719G

Aija Man O Man Naomi

11168957C Very Good-85-3YR-CAN
2-01 2x 365d 24707 4.2 1047 3.6 902
3-04 2x 365d 34961 4.1 1448 3.4 1202
• 1 Superior Lactation
• Son at Semex

3rd thru 5th Dams

Aija Shottle Jenny VG-85-CAN 1*
3-03 2x 305d 24645 4.0 985 3.3 818
Aija Goldwyn Joyfull VG-86-CAN 1*
3-02 2x 305d 25067 4.3 1078 3.3 836
Aija Out Joy EX-90-CAN 3E 3*
5-04 2x 305d 33775 3.3 1131 2.9 981
Life: (5 Lacs) 156599 3.6 5628 3.0 4716

PTAT+3.25 Kingboy sells Ready to Flush



CO-VISTA ATWOOD DESIRE VG-87-2YR VG-MS
2ND DAM LOT 8



SCIENTIFIC DEBUTANTE RAE *RC EX-92
4TH DAM LOT 8

LOT 8

MIG-FD KINGBOY DIEDRA 150

USA 74635290

Born: 29-December-2014

DONOR DAM

Holstein Plaza Contacts:

Steve Mower +1 240-520-5906
Jennifer Dingbaum +1 320-250-2412
Hendrik Albada +1 240-520-1566
Amanda Hauck +1 570-765-0536

USA	Milk	Fat	Prot	SCS	DPR	PL	FLC	UDC	PTAT	DCE	NM	GTPI
12/15	+970	+53	+33	2.85	+1.3	+4.9	+3.19	+2.95	+3.25	4.9%	+611	+2545

Morningview Mcc Kingboy-ET

72044077 *TV *TL *TY *TD
PTA +1496M +49F +42P 78%R 12/15
PTA +4.7PL 2.79SCS +1.2DPR
PTA +2.97T +2.39UDC +2.21FLC 78%R
GTPI +2527G

EDG Desire Mogul Dedra-ET

71494892 Born: October 7, 2012
GTPI+2358 +3.19T +2.91UDC +2.79FLC
• Full sister to:
EDG Desire Mogul Dee VG-87-3YR-CAN
EDG Desire Mogul Dice VG-86-2YR-CAN
EDG Deman at Jetstream Genetics

De-Su Bkm McCutchen 1174-ET

69990138 *TV *TL *TY *TD
PTA +920M +52F +34P 99R 12/15
PTA +3.14T +2.85UDC +2.47FLC
GTPI +2486G

Morningview Super Megan-ET

68654508 Excellent-91 EX-MS DOM
4-02 2x 305d 33490 3.7 1236 3.0 1018

Mountfield SSI Dcy Mogul

3006972816 *TR *TV *TL *TY *TD
PTA +1439M +90F +43P 99%R 12/15
PTA +2.57T +2.62UDC +2.64FLC
GTPI +2540G

Co-Vista Atwood Desire-ET

69058395 Very Good-87-2YR VVVVV
2-03 2x 365d 26910 3.9 1057 3.6 977
4-10 3x proj. 29844 3.8 1124 3.0 908
• Former #1 PTA Type cow in the breed
• Fresh 2/3/2015 and looks great
• Potential 9th generation Excellent!

3rd thru 11th Dams

Scientific Deluxe Rae-ETS

EX-91 EX-MS @ 4-06
3-11 2x 365d 35424 3.9 1351 3.3 1183

Scientific Debutante Rae-ET

EX-92 EEEEE *RC *CV
2-02 2x 365d 32930 4.4 1440 3.4 1132

- All-American 4-Yr-Old Cow 2005
- Res Grand Champ, Int'l Show 2005
- HM All-American Jr 3-Yr-Old Cow 2004
- Res Grand Champ, Mid-W Sprg/Nat 2004
- Int Champion, Mid-West Sprg/Nat 2004

Scientific Jubilant Rae-ET EX-90 DOM
Life: 1394d 117590 4.0 4707 3.6 4242

C Hanoverhill Tony Rae

EX-96 3E GMD DOM
6-11 2x 365d 40220 4.1 1661 3.3 1331
Life: 2247d 166396 4.1 6904 3.4 5612

Grand Champion Western National 1993

Hanoverhill TT Roxette-ET EX-94 2E GMD
10-0 3x 365d 35040 4.3 1519 3.0 1063
Life: 2104d 164789 4.1 6760 3.1 3587

Mil-R-Mor Roxette

EX-CAN 30*
Life (6 Lacs): 121418 4.7 5728
C Glenridge Citation Roxy EX-97 4E GMD
Life: 3620d 209784 4.5 9471

Queen of the Breed I and II

C Norton Court Model Vee

EX-90
Life: 4183d 218629 3.9 8581
• All-American Produce of Dam 1977, '78, '79
Norton Court Reflection Vale VG-85-CAN 5*
Life (14 Lacs): 249583 3.7 9295



RANSOM-RAIL FACEBK PARIS VG-87
2ND DAM OF LOT 9

WELCOME MAC PEYTAN VG-87
3RD DAM OF LOT 9

LOT 9

R-E-W AS PEACHES-ET

USA 143512723

Born: 8-September-2015

Holstein Plaza Contacts:

Steve Mower +1 240-520-5906
Jennifer Dingbaum +1 320-250-2412
Hendrik Albada +1 240-520-1566
Amanda Hauck +1 570-765-0536

USA	Milk	Fat	Prot	SCS	DPR	PL	FLC	UDC	PTAT	DCE	NM	GTPI
12/15	+1398	+64	+52	2.84	+2.4	+3.9	+1.65	+2.39	+2.15	5.1%	+672	+2609

Westenrade altaSpring

NL 9490336666 *TV *TL *TY *TD
PTA +1559M +76F +53P 78%R 12/15
PTA +700NM\$ +3.8PL 3.01SCS +.7DPR
PTA +2.36T +2.78UDC +1.92FLC 76%R
GTPI +2590G

Ms K-E-W Pandora-ET

142588864 Born: September 9, 2013
GTPI+2509 +807M +57F +39P +2.44T
• Due 12/15/15 and looks very promising

Mountfield SSI Dcy Mogul

3006972816 *TR *TV *TL *TY *TD
PTA +1439M +90F +43P 99%R 12/15
PTA +2.57T +2.62UDC +2.64FLC
GTPI +2540G

Westenrade Carrera

NL 931730982 Very Good-85

De-Su Bkm McCutchen 1174-ET

69990138 *TV *TL *TY *TD
PTA +920M +52F +34P 99R 12/15
PTA +3.14T +2.85UDC +2.47FLC
GTPI +2486G

Ransom-Rail Facebk Paris-ET

70350746 Very Good-87 VG-MS @ 2-10
2-00 2x 365d 21560 4.4 946 3.8 809
• Sons in AI

3rd thru 7th Dams

Welcome Mac Peytan-ET VG-87 VG-MS
2-04 365d 31650 4.7 1479 3.8 1204
Welcome Goldwyn Penya
VG-89 GMD DOM
2-00 365d 34780 3.5 1203 3.3 1159
Welcome Ozzie Penya-ET
EX-90 EX-MS DOM
1-11 365d 31310 4.0 1260 3.4 1054
5-02 365d 32020 3.7 1192 3.6 1140
Welcome Aaron Penel VG-87 DOM
4-08 365d 35210 4.2 1480 3.3 1174
• Sons in AI
Welcome Merrill Perky-ET VG-85
4-03 365d 34690 3.6 1235 3.1 1073
Life: 136330 3.5 4785 3.1 4194



**CALBRETT SUPERSIRE BARB *RC VG-86-2YR VG-MS
DAM LOT 10**

**RAINYRIDGE TALENT BARBARA *RC EX-95
3RD DAM LOT 10**

LOT 10

MS DG-TM DOZER BRISTOL

USA 3128162357

Born: 18-August-2015

Holstein Plaza Contacts:

Steve Mower +1 240-520-5906
Jennifer Dingbaum +1 320-250-2412
Hendrik Albada +1 240-520-1566
Amanda Hauck +1 570-765-0536

USA	Milk	Fat	Prot	SCS	DPR	PL	FLC	UDC	PTAT	DCE	NM	GTPI
12/15	+891	+51	+39	2.62	+2.8	+8.0	+1.51	+2.02	+2.02	6.7%	+729	+2562

Mr Shot Dozer 1491-ET

72128280 *TV *TL *TY *TD
PTA +1464M +48F +48P 78%R 12/15
PTA +9.6PL 2.55SCS +2.9DPR
PTA +1.54T +1.82UDC +1.34FLC 78%R
GTPI +2618G

Calbrett Supersire Barb-ET *RC

CAN 11658906 Very Good-86-2YR VG-MS
GTPI+2556 1640M +71F +54P +2.36T
2-04 2x 137d 12285 4.8 595 3.0 369 RIP
• #1 GTPI Red Carrier Cow in the Breed
• Dam of #1 GTPI Olympian son in the Breed
• Dam of #2 Red Carrier Female in the Breed
• Dam of only *RC bull >+2500G & >3 PTAT
• Sons at Semex, Select, Cogent & St. Jacobs
• Topseller 2013 Cormdale Sale CA \$265,000

Butz-Butler Shotglass-ET

70476870 *TV *TL *TY *TD
PTA +1779M +47F +43P 96R 12/15
PTA +1.17T +1.23UDC +1.54FLC
GTPI +2360G

Miss OCD Robst Delicious-ET

3006989479 VG-87 VG-MS DOM
2-05 2x 305d 25780 3.5 908 3.3 841

Seagull-Bay Supersire-ET

69981349 *TV *TL *TY *TD
PTA +2359M +110F +71P 99R 12/15
PTA +1.60T +.68UDC +.55FLC
GTPI +2719G

Rainyridge Super Beth-ET

CAN 11060180 Very Good-86-2YR-CAN
2-03 2x 365d 23739 3.7 877 3.5 822
4-06 Proj. 28739 3.9 1116 3.5 1014
• Sons in AI

3rd thru 6th Dams

Rainyridge Talent Barbara *RC

EX-95 EEEEE 8*
3-04 2x 365d 34465 3.6 1257 3.3 1133
• HHM All-American Aged Cow 2011
• Unanimous All-American 5-Yr-Old Cow '10
• Unanimous All-Canadian 5-Yr-Old Cow '10
• Nom. All-American Jr. 3-Yr-Old Cow '08
• Nom. All-Canadian Jr. 3-Yr-Old Cow '08
RF Outside Breeze-ET EX-95 EEEEE 2E 2*
8-00 3x 365d 37970 3.9 1484 3.4 1298
Life: 1896d 165379 4.6 7560 3.6 5793
• Gr. Champ. South. Spring Show 2011
• 1st 5-Yr-Old Cow MB Spring 2008
Rayverley Briana Milan-ET EX-CAN 2E 6*
6-03 2x 365d 27075 3.4 928 3.2 862
Rainyridge Tony Beauty EX-CAN 5E 9*
Life: (8 Lacs) 199869 3.3 6592 3.2 6455
• All-Canadian Mature Cow '92, '93, '95, '99
• All-American Aged Cow '92, '95, '99
• Supreme Champ. WDE '95, '99
• Res. Gr. Champ. RWF '95, '99
• All-American People's Choice Winner '99
• HI Cow of the Year '99
• Grand Champ. RWF 1993
• Nom. All-Canadian Mature Cow 1991
• HM All-Canadian 4-Yr-Old Cow 1989



SAVAGE-LEIGH GOLD LONA EX-92-3YR
DAM OF 11

SAVAGE-LEIGH LEONA EX-96 EEEEE
SISTER TO DAM OF LOT 11

LOT 11

SAVAGE-LEIGH DRMAN LONA-ET

840 3123796942

Born: 5-September-2015

Holstein Plaza Contacts:

Steve Mower +1 240-520-5906
Jennifer Dingbaum +1 320-250-2412
Hendrik Albada +1 240-520-1566
Amanda Hauck +1 570-765-0536

Val-Bisson Doorman

CAN 107281711 *TV *TL *TY *TD
PTA -49M +27F +21P 93%R 12/15
PTA +378NM\$ +3.0PL 2.58SCS
PTA +3.26T +2.23UDC +1.96FLC
GTPI +2262G

Savage-Leigh Gold Lona-ET

3004778739 Excellent-92-3YR EEVVE
3-06 2x 365d 34290 3.8 1304 3.1 1065
5-03 2x 365d 38710 4.0 1540 3.3 1263
• Res Senior Champ, Eastern Fall Nat'l 2013
• Int Champion, Eastern Fall Nat'l 2012
• 1st Sr 2-Year-Old, Eastern Fall Nat'l 2011

Maternal sister to Gold Lona

Savage-Leigh Leona-ET EX-96 2E GMD
5-05 2x 365d 42050 4.3 1796 3.2 1343
• Nom All-American 125,000 lb Cow 2015
• Nom All-American 125,000 lb Cow 2014
• Nom All-American 125,000 lb Cow 2013
• Res All-American 125,000 lb Cow 2012
• Res Senior Champ, Eastern Fall Nat'l 2011
• Nom All-American & All-Canadian 2010
• HHM All-American Jr 2-Yr Old 2007

De-Su 521 Bookem-ET

66636657 *TR *TV *TYL *TY *TD
PTA +1347M +29F +50P 99%R 12/15
PTA +1.66T +1.12UDC +1.15FLC
GTPI +2341G

Val-Bisson Shottle Imelda

CAN 106173432 Very Good-89-CAN 4*
4-03 2x 365d 40505 3.8 1550 3.6 1455

Braedale Goldwyn

CAN 10705608 *TV *TL *TY
PTA -371M +13F +1P 99%R 12/15
PTA +1.81T +1.51UDC +1.53FLC
GTPI +1882G

Savage-Leigh Licorice-ET

60317090 Excellent-92 GMD DOM
4-02 2x 365d 51220 4.3 2179 3.3 1693
Life: 1018d 113740 4.4 4968 3.4 3858
• Nominated All-American 2006
• HHM All-American 5-Yr Old Cow 2006
• Nom All-American Produce 2011 & 2012

Maternal sister to Lot 11

Savage-Leigh Alex Lacey VG-87-2YR
• Jr. All-American Winter Yearling 2014
• All-American Winter Yearling 2014
• 1st Winter Yearling WDE 2014

3rd thru 8th Dams

Savage-Leigh Bellwood Linda

EX-92 2E GMD DOM
2-10 2x 365d 40240 5.8 2349 3.4 1358
Life: 1312d 126760 5.2 6576 3.2 4076
• Nom All-American Jr. 3-Year-Old 1999
• Nom Global Cow of the Year 2005

Savage-Leigh Star Linda-ET

VG-87 GMD

2-02 2x 365d 30890 4.0 1236 3.1 952

Savage-Leigh Glenview Linda

EX-90 EVVE GMD DOM

6-08 2x 365d 41820 4.6 1936 3.0 1247

Life: 1892d 150300 4.4 6636 3.2 4813

Savage-Leigh Lindas Chairman

GP-84

5-10 2x 365d 30620 3.8 1167 3.3 1013

Life: 1972d 121550 3.9 4718 3.3 4013

Savage-Leigh Creek Lydia

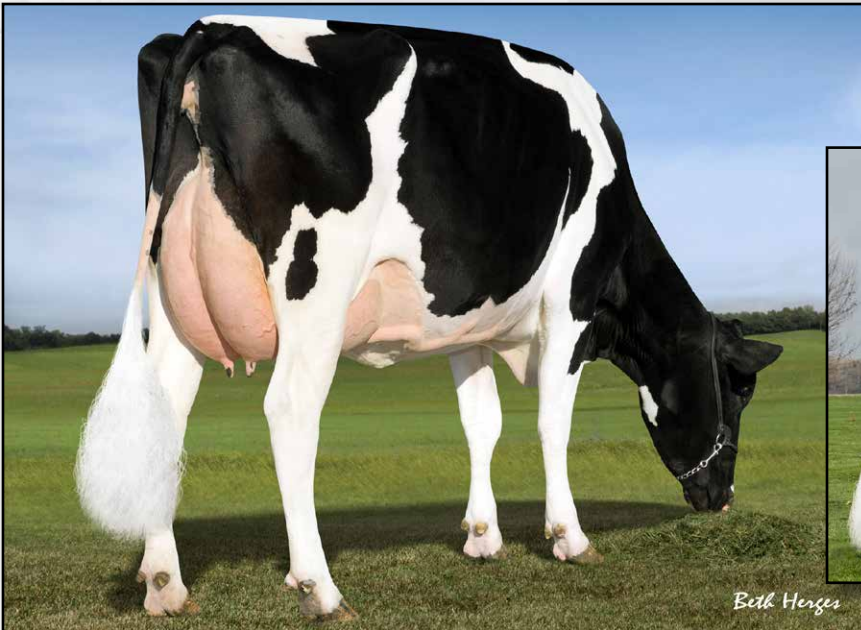
VG-88

4-11 2x 344d 16390 4.2 685 3.1 511

Savage-Leigh Kate Linda

VG-85

6-01 2x 305d 19940 4.0 793



Both Henges



Both Henges

PINE-TREE 2149ROBST 4846
DAM OF LOT 12

AMMON-PEACHEY SHAUNA EX-90 GMD DOM
MATERNAL SISTER TO 2ND DAM OF LOT 12

LOT 12

VIEW-HOME SILVER AUSTIN

840 3132109797

Born: 21-June-2015

Holstein Plaza Contacts:

Steve Mower +1 240-520-5906
Jennifer Dingbaum +1 320-250-2412
Hendrik Albada +1 240-520-1566
Amanda Hauck +1 570-765-0536

USA	Milk	Fat	Prot	SCS	DPR	PL	FLC	UDC	PTAT	DCE	NM	GTPI
12/15	+1482	+83	+49	2.87	+1.1	+5.6	+1.77	+1.48	+1.97	4.8%	+741	+2566

Seagull-Bay Silver-ET

72254526 *TV *TL *TY *TD
PTA +1715M +102F +57P 78%R 12/15
PTA +4.6PL 2.88SCS -1.00DPR
PTA +2.57T +2.05UDC +2.47FLC 78%R
GTPI +2630G

Pine-Tree 2149Robst 4846

69804610 Very Good-86-2YR DOM
2-04 2x 365d 32001 4.7 1520 3.4 1097

• Huge Brood Cow

Several sons in A.I. including:

- View-Home Powerball P
- View-Home Monterey
- View-Home Missouri
- View-Home Cashflow

Mountfield SSI Dcy Mogul

3006972816 *TR *TV *TL *TY *TD
PTA +1439M +90F +43P 99%R 12/15
PTA +2.57T +2.62UDC +2.64FLC
GTPI +2540G

Seagull-Bay Snow Darling

70640273 Very Good-86 DOM
2-02 2x 365d 35620 3.5 1257 3.0 1077

Roylane Socra Robust

64966739 *TR *TV *TL *TD
PTA +946M +71F +42P 99%R 12/15
PTA +.85T +.75UDC +1.20FLC
GTPI +2491G

Pine-Tree Zenith Sheen

64350530 Very Good-87 VG-MS DOM
1-11 3x 365d 27884 3.9 1091 3.3 908

• Maternal sister to:

Ammon-Peachey Shauna

EX-90 GMD DOM
Dam to Supersire, Headliner, Platinum,
Diamond, Sargeant, MVP and many more!

3rd thru 9th Dams

Pine-Tree Martha Sheen-ET

VG-86 VG-MS DOM
1-11 3x 365d 31210 4.2 1305 3.3 1027

Pine-Tree Missy Martha-ET VG-86 DOM

2-02 3x 365d 34730 3.6 1266 3.1 1070

Wesswood-HC Rudy Missy-ET

EX-92 3E DOM
4-11 3x 365d 40880 4.1 1665 3.2 1308
Life: 1262d 119610 4.1 4885 3.2 3804

Wesswood Elton Mimi EX-90 GMD DOM

3-05 2x 365d 35380 3.3 1160 3.2 1121

Wesswood Mandingo Ivy VG-87 VEEVV

6-05 2x 365d 36330 3.6 1305 3.0 1087
Life: 1835d 144060 3.4 4933 3.1 4412

Wesswood Astro Matt Esther

VG-87 GMD DOM
6-08 2x 365d 31860 3.5 1125 3.1 982
Life: 1847d 140110 3.6 5029 3.2 4424

Wesswood Bell Claudette

VG-87 GMD DOM
9-10 2x 365d 38810 3.6 1383 2.9 1140
Life: 3634d 280980 3.6 9997 3.1 8625



SILVERMAPLE DAMION CAMOMILE EX-95
DAM OF LOT 13

SILVERMAPLE WINDHAM CAMILE VG-89-2YR
MATERNAL SISTER TO LOT 13

LOT 13

PENDING (BEEMER x CAMOMILE)

840 3128969084

Born: 06-June-2015

Holstein Plaza Contacts:

Steve Mower +1 240-520-5906
Jennifer Dingbaum +1 320-250-2412
Hendrik Albada +1 240-520-1566
Amanda Hauck +1 570-765-0536

Pol Butte Mc Beemer

CAN 7525863 *TV *TL *TY *TD
PTA +942M +45F +27P 78R 12/15
PTA +5.3PL 2.88SCS -1.4DPR 5.3%DCE
PTA +3.67T +2.91UDC +2.88FLC 77R 12/15
GTPI +2256G

Silvermaple Damion Camomile

9732453C Excellent-95 EEEEE
3-03 2x 365d 32269 4.1 1327 3.6 1160
2-03 2x 313d 20119 4.0 796 3.5 705
• Grand Champion BC Spring Show 2012
• 1st 4-Yr-Old Cow BC Spring Show 2012
• All-Canadian Jr 3-Yr-Old Cow 2011
• All-American Jr 3-Yr-Old Cow 2011
• Int Champion Royal Winter Fair 2011
• Int Champion International Show 2011
• Res Grand Champion Int'l Show 2011
• All-American Jr 2-Yr-Old Cow 2010
• All-Canadian Jr 2-Yr-Old Cow 2010

De-Su Bkm McCutchen 1174-ET

69990138 *TV *TL *TY *TD
PTA +920M +52F +34P 99R 12/15
PTA +3.14T +2.85UDC +2.47FLC
GTPI +2486G

Butz-Butler Gold Banner

140145517 Very Good-88-2YR-CAN
2-06 2x 365d 3317 4.2 1409 3.1 1049

Erbacres Damion

130263722 *TR *TV *TL *TY *TD
PTA -850M -70F -13P 99%R 12/15
PTA +2.09T +1.12UDC +2.29FLC
GTPI +1461G

Stanhope Camila Goldwyn

7807926C Very Good-85-CAN
4-01 2x 365d 30461 4.9 1486 3.3 1010
3-01 2x 321d 22399 4.5 1003 3.5 791
2-01 2x 340d 20697 4.4 913 3.4 697

Maternal sisters to Cher:

Silvermaple Bolton Cameo EX-91

Butlerview Door Camilla

- 1st Winter Yrlg/Jr. Champ West. Spring Nat'l '15
- Jr. All-American Winter Calf '14
- Nom All-American Winter Calf '14
- 1st Winter Calf WDE Jr. Show '14
- 5th Winter Calf WDE '14

Butlerview Doorman Class

- 1st Spring Yrlg, Jr. Champ WI Champ Show '15
- 3rd Spring Calf WDE 2014
- HM All-American Spring Calf '14

Silvermaple Windham Camile VG-89-2YR

- 1st Sr. 2-Yr-Old & Int. Champ. Int. Jr Hol. Show '15
- 2nd Sr. 2-Yr-Old Int. Holstein Show 2015
- 2nd Sr-2Yr-Old Royal Winter Fair 2015
- 1st Sr. 2-Yr-Old/HM Gr. Champion CA St. Show '15
- 1st Sr. 2-Yr-Old Le Supreme Laiter Qc Show '15

3rd Dam

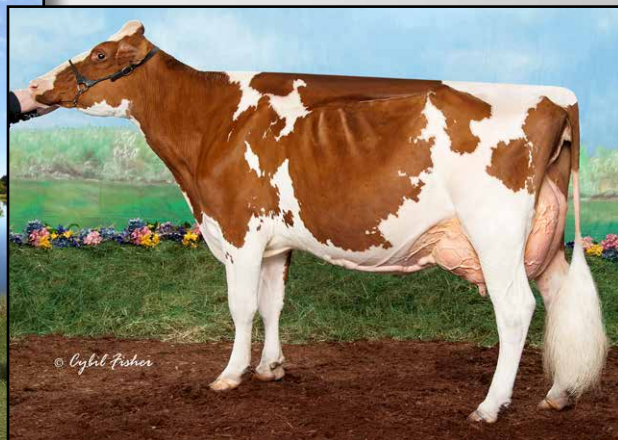
Kendu Triumphant Charity EX-93-CAN 3*

- 3-04 2x 365d 28519 3.7 1065 3.1 888
- HM Grand Champ Vancouver Island 2006
 - 3rd 4-Yr-Old Cow Saskatoon Expo 2005
 - 3rd 4-Yr-Old Cow Central Fraser Valley 2005

Ready to Flush... RED Barbwire from the ATLEES!



STUNNING BARBWIRE ATLEE-RED
LOT 14



M-RIVERVIEW AUDRA-RED-ET EX-92
DAM OF LOT 14

LOT 14

STUNNING BARBWIRE ATLEE-RED

840 3128648913

Born: 16-December-2014

DONOR DAM

Holstein Plaza Contacts:

Steve Mower +1 240-520-5906
Jennifer Dingbaum +1 320-250-2412
Hendrik Albada +1 240-520-1566
Amanda Hauck +1 570-765-0536

Hylite Barbwire-Red-ET

CAN 9748330 *TV *TL *TY *TD
PTA -819M -11F -14P 98%R 12/15
PTA -1.9PL 2.91SCS -1.3DPR
PTA +1.75T +1.03UDC +1.90FLC 97%R
GTPI +1559G

M-Riverview Audra-Red-ET

66347582 Excellent-92 EEEVE
2-03 2x 365d 23260 3.3 770 3.1 714
3-08 2x 305d 28320 3.8 1063 3.1 865
5-03 2x 305d 29700 3.7 1112 3.0 889
• 1st 5-Yr-Old & HM Cham. NY Spr. Show '15
• 1st 5-Yr-Old Florida State Fair 2015
• 2nd 5-Yr-Old All-American R&W Show '15
• 1st Sr. 3-Yr-Old Mideast Fall Nat'l '13
• 4th Sr. 3-Yr-Old (2nd Jr.) Int'l R&W Show '13
• HM Grand Champion GA Nat'l Fair 2013
• 2nd Sr. 3-Yr-Old All-Amer. R&W Show '13

Deslacs Shaquille-ET *RC

CAN 103512991 *RC *TV *TL *TY
PTA -315M -21F -21P 99%R 12/15
PTA +.95T +.76UDC +1.17FLC 99%R
GTPI +1501G

Rainyridge Talent Barbara-ET *RC

CAN 7543170 Excellent-95 EEEEE
3-04 2x 365d 34465 3.6 1257 3.3 1133

Patience Sholine Contender-Red

CAN 7483577 *TV *TL
PTA -2379M -53F -63P 99%R 12/15
PTA 1.70T +2.12UDC +1.05FLC 99%R
GTPI +1473G

Greenlea Adv Anna-ET

63810885 Excellent-92 EEEVE 2E
3-06 2x 305d 29950 4.0 1185 3.2 964
6-01 2x 305d 32830 4.1 1360 3.0 998
Life: 1959d 168780 4.0 6802 3.2 5451

3rd thru 7th Dams

La-Foster Astrmcal Anna-ET EX-90
4-11 2x 365d 30490 3.8 1159 3.5 1081
MD-Delight Durham Atlee
EX-92 EEEEE GMD DOM
3-11 2x 365d 38290 5.5 2091 3.1 1177
• All-American Sr. 3-Yr-Old 2005
• Res. Int. Champion Int'l Holstein Show 2005
• Dam of Atwood, Golden Dreams & Aftershock
MD-Delight Strm Amberlee-ET
VG-88 DOM
2-02 2x 365d 26170 3.7 969 3.2 835
Ms Kingstead Chief Adeen-ET
EX-94 2E DOM
3-05 2x 310d 30180 4.0 1209 3.4 1020
Life: 1382d 100760 4.0 4010 3.4 3458
• 2x Member All-American Produce
• Nom All-American Jr 3-Yr Old
• Nom All-American 4-Yr Old
• Dam of 16 VG and 11 EX Offspring
C Aitkenbrae Starbuck Ada EX-94 2E DOM
13-8 2x 365d 25150 3.0 764 3.2 796
• All-American Produce of Dam 2000
• 1st Eastern Nat'l 3-Yr Old & Grand Ch 1990



**C-HAVEN UNO RARITY VG-85-2YR
DAM LOT 15**



**C-HAVEN TASHAS SHTL TISH EX-90 2E
3RD DAM LOT 15**

LOT 15

C-HAVEN KINGBOY REEDA

840 3129809097 Born: 6-May-2015

RZG Test pending, results expected in January 2016

Holstein Plaza Contacts:

Steve Mower +1 240-520-5906
Jennifer Dingbaum +1 320-250-2412
Hendrik Albada +1 240-520-1566
Amanda Hauck +1 570-765-0536

USA	Milk	Fat	Prot	SCS	DPR	PL	FLC	UDC	PTAT	DCE	NM	GTPI
12/15	+524	+39	+24	2.55	+3.8	+5.6	+1.99	+2.51	+3.06	2.9%	+598	+2566

Morningview Mcc Kingboy-ET

72044077 *TV *TL *TY *TD
PTA +1496M +49F +42P 78%R 12/15
PTA +4.7PL 2.79SCS +1.2DPR
PTA +2.97T +2.39UDC +2.21FLC 78%R
GTPI +2527G

C-Haven Uno Rarity-ET

72156335 Very Good-87-2YR VG-MS
GTPI+2351 +414M +46F +19P +2.70T
2-00 2x 208d 18728 4.0 750 3.1 588 Inc.
• 11th generation VG or EX from
Ladys-Manor Delightful Jem
• Supershot & Montross sons sold German AI!
• Huge testing offspring on RZG

De-Su Bkm McCutchen 1174-ET

69990138 *TV *TL *TY *TD
PTA +920M +52F +34P 99R 12/15
PTA +3.14T +2.85UDC +2.47FLC
GTPI +2486G

Morningview Super Megan-ET

68654508 Excellent-91 EX-MS DOM
4-02 2x 305d 33490 3.7 1236 3.0 1018

Amighetti Numero Uno-ET

ITA 17990915143 *TV *TL *TY *TD
PTA -329M +61F +3P 99%R 12/15
PTA +2.30T +2.24UDC +1.57FLC
GTPI +2397G

C-Haven Dama Robyn

70479477 VG-85-2YR VG-MS
2-03 2x 305d 22850 3.9 891 3.2 736

3rd thru 11th Dams

C-Haven Tashas Shtl Tish-ET EX-90 2E

4-07 2x 343d 33890 3.9 1323 3.3 1111

Ladys-Manor AM Tasha-ET

EX-92 EX-MS 2E

5-02 2x 365d 38950 3.6 1395 3.4 1335

Ladys-Manor Durham AM-ET

EX-91 EX-MS 2E GMD DOM

5-09 2x 365d 41070 4.1 1691 3.3 1374

Life: 1901d 165780 4.4 7252 3.4 5719

Ladys-Manor Temptress Am-ET

VG-89 GMD DOM

8-05 2x 365d 32100 4.5 1438 3.1 992

Ladys-Manor Temptress Jem

EX-91 GMD DOM

3-02 2x 365d 34450 4.7 1602 3.1 1051

Ladys-Manor Top Gun Jemini-ET

EX-93 3E GMD DOM

3-11 2x 365d 36080 3.5 1246 3.1 1106

Life: 2089d 150300 3.8 5699 3.0 4495

Ladys-Manor Delightful Jem

VG-88 GMD DOM

6-02 2x 365d 31890 4.1 1314 2.9 933

Life: 1940d 147650 4.0 5946 3.0 4415

Ladys-Manor Donnas Delight VG-85

8-09 2x 365d 30780 3.7 1141 3.0 911

Life: 2392d 166610 3.7 6114

Ladys-Manor Nancy Archie

EX-90 2E GMD

Life: 2647d 156000 3.7 5834



BVK ATWOOD ABRIANNA EX-92-3YR EEEVE
DAM OF LOT 16



BVK ATWOOD ARIANNA EX-94
FULL SISTER TO DAM LOT 16

LOT 16

BUTLERVIEW DOOR AIKA

840 3125945081

Born: 6-June-2015

Holstein Plaza Contacts:

Steve Mower +1 240-520-5906
Jennifer Dingbaum +1 320-250-2412
Hendrik Albada +1 240-520-1566
Amanda Hauck +1 570-765-0536

USA	Milk	Fat	Prot	SCS	DPR	PL	FLC	UDC	PTAT	DCE	NM	GTPI
12/15	-811	+15	-5	2.92	+0.5	+1.1	+2.49	+2.65	+3.54	8.4%	+134	+2037

Val-Bisson Doorman

CAN 107281711 *TV *TL *TY *TD
PTA -49M +27F +21P 93%R 12/15
PTA +378NM\$ +3.0PL 2.58SCS
PTA +3.26T +2.23UDC +1.96FLC
GTPI +2262G

BVK Atwood Abrianna-ET

140658941 Excellent-92-3YR *BL *TD
2-02 2x 305d 20740 4.0 822 3.3 690
3-02 2x 305d 25170 5.0 1257 3.4 852
4-10 2x 112d 10910 4.4 478 3.1 341
• Res. All-American Jr. 3-Yr-Old 2013
• 2nd Jr. 3-Yr-Old and Best B&O WDE '13
• Grand Champ. IL State Fair 2013
• Topseller Impact of Ada Sale @ \$49,000

De-Su 521 Bookem-ET

66636657 *TR *TV *TYL *TY *TD
PTA +1347M +29F +50P 99%R 12/15
PTA +1.66T +1.12UDC +1.15FLC
GTPI +2341G

Val-Bisson Shottle Imelda

CAN 106173432 Very Good-89-CAN 4*
4-03 2x 365d 40505 3.8 1550 3.6 1455

Maple-Downs-I G W Atwood-ET

CAN 8956379 *TR *TV *TL *TY *TD
PTA -34M +29F +3P 99%R 12/15
PTA +3.78T +2.64UDC +2.97FLC 99%R
GTPI +1952G

Ms Kingstead Chief Adeen-ET

17302711 Excellent-94 2E DOM *BL
3-05 2x 310d 30180 4.0 1209 3.4 1020
Life: 1382d 100760 4.0 4010 3.4 3458
• 2x Member All-American Produce
• Nom All-American Jr 3-Yr Old
• Nom All-American 4-Yr Old
• Dam of 16 VG and 11 EX Offspring

Abrianna's full sister:

BVK Atwood Arianna EX-94
• Unanimous All-American Jr. 2-Yr-Old '12
• All-Canadian Jr. 2-Yr-Old '12
• Nom. All-American Spring Yearling '11
BVK Atwood Andrea EX-92
• 3rd Jr. 3-Yr-Old WDE 2013
• Grand Champion, NE Fall Nat'l 2013

Adeen's full sister:

Shoremar S Alicia EX-97 3E EEEEE DOM
Life: 185002 4.2 7731 3.4 6288
• Res. All-American 125,000 cow '14
• All-World & Peoples Choice Winner '02
• HHM All-Time All-American 5-Yr-Old
• 3x All-Canadian & 3x All-American

3rd Dam

C Aitkenbrae Starbuck Ada EX-94 2E DOM
13-8 2x 365d 25150 3.0 764 3.2 796
• All-American Produce of Dam 2000
• 1st Eastern Nat'l 3-Yr Old & Grand Ch 1990



THURLER SUPERSIRE LYNN
DAM LOT 17



GINARY GOLDWYN TANJA EX-90-CAN
3RD DAM OF LOT 17

LOT 17

COMFORT RUBI BEV

CAN 12294944

Born: 4-October-2015

Holstein Plaza Contacts:

Steve Mower +1 240-520-5906
Jennifer Dingbaum +1 320-250-2412
Hendrik Albada +1 240-520-1566
Amanda Hauck +1 570-765-0536

USA	Milk	Fat	Prot	SCS	DPR	PL	FLC	UDC	PTAT	DCE	NM	GTPI
12/15	+1598	+95	+53	2.90	+1.6	+7.4	+0.87	+0.62	+1.26	4.0%	+853	+2591

EDG Rubicon-ET

72128125 *TV *TL *TY *TD
PTA +1594M +100F +55P 78%R 12/15
PTA +6.8PL 3.00SCS +0.8DPR
PTA +1.94T +1.43UDC +1.94FLC 78%R
GTPI +2670G

Thurler Supersire Lynn

CAN 11727318 Born: June 1, 2013
GTPI+2488 +619M +82F +31P +2.29T
2-06 3x 305d 31610 3.7 1180 34 1059
• Due April 2016

Full sister to Lynn:

Ginary Supersire Nicole

• Dam of Peak altaNixer GTPI+2667

Mountfield SSI Dcy Mogul

3006972816 *TR *TV *TL *TY *TD
PTA +1439M +90F +43P 99%R 12/15
PTA +2.57T +2.62UDC +2.64FLC
GTPI +2540G

Sandy-Valley Robust Ruby-ET

69998487 Very Good-87
2-04 2x 305d 29450 3.2 950 3.1 916

Seagull-Bay Supersire-ET

69981349 *TV *TL *TY *TD
PTA +2359M +110F +71P 99R 12/15
PTA +1.60T +.68UDC +.55FLC
GTPI +2719G

Ginary Oman Oman Nicole

CAN 9775394 Good Plus-82-2YR-CAN
1-10 2x 365d 25331 4.4 1124 3.6 902
• Sons in AI

3rd thru 7th Dams

Ginary Goldwyn Tanja EX-90-CAN
3-03 2x 365d 34489 5.0 1713 3.5 1197
Life: (5 Lacs) 159542 4.9 7771 3.5 5602
Ginary Rudolph Tanja VG-86-CAN 18*
6-01 2x 365d 44085 4.9 2149 3.3 1475
Life: (4 Lacs) 181397 4.3 7888 4.3 6490
• 2 Super 3's, 4 Superior Lactations
• Multiple sons at Semex
Ginary Astre Yasmin VG-87-CAN 7*
4-07 2x 365d 32315 3.7 1184 3.4 1091
Valigny Jethro Bonny VG-88-CAN
5-05 2x 365d 26473 3.7 988 3.6 941
Life: (5 Lacs) 108898 3.9 4231 3.6 3973
Valigny Marlin Wendy VG-87-CAN
Life: (7 Lacs) 139924 4.3 6003 3.7 5247

gRZG+160 & +2526G *altaSpring* from the Splendors!



SNOWBIZ SYMPATICO SAL *RC
DAM OF LOT 18



GEN-I-BEQ SNOWMAN SUMMER *RC VG-85-2YR
2ND DAM OF LOT 18

LOT 18

DG TM SPRING SNOWDROP

840 3128162375

Born: 21-July-2015

Holstein Plaza Contacts:

Steve Mower +1 240-520-5906
Jennifer Dingbaum +1 320-250-2412
Hendrik Albada +1 240-520-1566
Amanda Hauck +1 570-765-0536

USA	Milk	Fat	Prot	SCS	DPR	PL	FLC	UDC	PTAT	DCE	NM	GTPI
12/15	+1756	+76	+48	2.91	+1.1	+5.2	+1.45	+2.11	+1.88	6.3%	+697	+2526
DEU	Milk	Fat	Prot	RZM	RZS	RZR	RZN	FLC	UDC	RZE		RZG
8/15	+1934	+73	+53	136	113	112	139	129	135	135		160

Westenrade *altaSpring*

NL 9490336666 *TV *TL *TY *TD
PTA +1559M +76F +53P 78%R 12/15
PTA +700NM\$ +3.8PL 3.01SCS +.7DPR
PTA +2.36T +2.78UDC +1.92FLC 76%R
GTPI +2590G

Snowbiz Sympatico Sal-ET

CAN 108251026 *RC *TY Born: May 16, 2013
GTPI+2396 +1290M +52F +34P +1.74T
• *Great heifer, due 2/8/2016*
• *Full sister to former #1 GTPI Red Heifer in the Breed Snowbiz Sympatico Sofia-Red*
Dam of:
288HO00175 DG Kingboy SNIPER at AI Total

Mountfield SSI Dcy Mogul

3006972816 *TR *TV *TL *TY *TD
PTA +1439M +90F +43P 99%R 12/15
PTA +2.57T +2.62UDC +2.64FLC
GTPI +2540G

Westenrade Carrera

NL 931730982 Very Good-85

Dymenthalm S Sympatico-ET

CAN 11004723 *RC *TV *TL *TY
PTA +1773M +73F +45P 96%R 12/15
PTA +1.85T +1.42UDC +1.22FLC
GTPI +2371G

Gen-I-Beq Snowman Summer-TW-ET

CAN 106807371 Very Good-85-2YR-CAN
2-01 2x 358d 30198 3.5 1051 3.1 934
Dam of:
223HO00017 Snowbiz Symion *RC one of the highest Red Carrier bull in the Breed!

3rd thru 12th Dams

Gen-I-Beq Bolton Secretly *RC

VG-87-CAN 3*
2-01 2x 365d 30474 4.4 1327 3.4 1043

• 1 Superior Lactation

Gen-I-Beq Goldwyn Secret

VG-87-CAN 11*
5-05 2x 365d 30573 4.5 1389 3.4 1038

Gen-I-Beq Durham Sherry VG-87-CAN 8*

5-02 2x 365d 40036 3.9 1574 3.2 1268

Glen Drummond Splendor

VG-86-2YR-CAN 38*
4-10 2x 314d 26510 4.2 1124 3.2 840

Glen Drummond Aero Flower

VG-88-CAN 18*
2-03 2x 326d 25622 4.0 1032 3.4 882

Glen Drummond Shower EX-CAN 14*

4-10 2x 365d 28583 4.8 1380 3.6 1016

Glen Drummond S C Jo Beth

EX-2E-CAN 7*
Life (6 Lacs): 141637 4.2 5994 3.2 3593

• Grand Champion Brant-Wentworth 1984

Glen Drummond Matt Beth VG-85 4*

11-10 2x 365d 25038 3.7 935
Life (5 Lacs): 105953 4.1 4295

Glen Drummond Marquis Beth VG-CAN

Life (8 Lacs): 112688 4.2 4766

Ferglynn Rag Apple Bertha VG-CAN 3*



TERMS AND CONDITIONS

GENERAL:

1. These terms are valid for all agreements made through this sale.
2. The organization of the sale is done by Holstein Plaza, part of AMS Genetics International LLC.
3. The party, which offers animals in this sale will be named after this as the "seller" and the party who buys through this sale and gets the sale item assigned, will be hereinafter identified as the "buyer".
4. The organization will only act as an intermediary in the realization from a (purchase) agreement between seller and buyer.

HOW DOES THE SALE WORK:

1. This is a traditional English auction, which starts low and allows bidders to place progressively higher bids.
2. Each lot closes at staggering times starting at 4:00 p.m. (EST) on Thursday, December 17 and the highest bidder then wins the lot.
3. All lots sell with reasonable starting bid.
4. When you place a bid, you agree to pay for the item if you're the winning bidder.
5. There are two ways of bidding - either directly through the internet (www.holsteinplaza.com) or by contacting one of the sale staff members listed.
6. All bids are made in U.S. dollars.
7. When you place a bid, you enter the maximum amount you're willing to pay for the lot. The other bidders and the sale organization will not be able to see your maximum bid. Through this Proxy bidding system, the Holstein Plaza auction system will increase your bid to the next lowest price when another user bids on the same item. The proxy bidding process continues until your maximum bid amount is reached or the auction ends. Every bidder is bound to his bid.
8. The sale is using the popcorn bid system/5-minute rule. Until that moment bids will be accepted.
9. On disputes, which may arise during the sale, the organization decides.
10. AMS Genetics will coordinate the paperwork and transfers.

PAYMENT:

1. Full payment for purchase is due to the sale management within 10 business days of the sale, no exceptions. The ownership stays with the seller until the complete payment of the invoiced amount has been received.
2. Sale invoices will be sent via e-mail or fax following the conclusion of the sale.
3. All live animals must be picked up or arrangements made with 20 days from the date of sale, this is the responsibility of the buyer. No cattle will be released to buyer until payment has been made. After 20 days, seller entitled to \$5.00 per day board and a monthly interest fee of 1%.
4. Upon purchase the buyer takes over the risks after payment. The calf needs to be paid within 10 days after the buyer received the invoice.
5. The payment should be made as mentioned on the invoice.
6. Claims need to be notified in writing to the seller within eight days after delivery to the buyer.

EXCLUDING LIABILITY:

1. The organization cannot be held responsible for errors on the internet site, sale catalog or in the advertisements.
2. The organization cannot be held responsible for visual or non visual regardless the size or nature of such defect of the animals sold.
3. The organization does not take any responsibility for damage to persons or cases, which has arisen because of or connected to the sale.
4. The cow indexes mentioned therein have been calculated or converted by the herdbook in the country the donor cow is housed in accordance with the current methods. All official pedigrees of sale animals can be requested.

5. The organization of the sale can never be held responsible for the bull and embryo contracts supplied with the sale items. The responsibility of the contract is entirely for the organization supplying the contract.
6. The organization can never be held responsible in case the embryos cannot be exported no matter what reason.
7. Any special terms must be communicated with sale management prior to the close of the auction at 4:00 p.m. (EST) on Thursday, October 8.

TERMS FOR FIRST CHOICES:

1. First choice is the selection of resulting offspring from listed pregnancies mentioned on the catalog page. Terms are as follows: 25% down within 10 days of sale; balance on possession when youngest choice reaches four months of age. Seller will provide 9K genomic testing of all resulting calves prior to selection, at buyer's request. All sales are final including purchase of first choice females; successful bidder/buyer is responsible for first and second payment.
 - a. Seller to pay all necessary registry and other applicable fees to obtain registry certificate
 - b. Seller entitled to \$5.00 per day board after 4 months, based on age of youngest calf born in the group from which the selection is made.
 - c. Should a female chosen from the respective flush fail to meet breeding guarantees, or should for any reason a female not result from a respective flush, the following steps will be taken to fulfill the purchase agreement:
 - i. Seller will offer choice of remaining ETs from the respective flush
 - ii. If, and only if, the above cannot be resolved, a full refund will be made on all payments. Disappointing genomic test results will not be accepted as a reason to cancel the purchase.

WARRANTIES:

1. Each seller warrants clear title to the animal or lot, and the right to sell same.
2. To the best of the seller's knowledge, each animal is sound and healthy in every respect. Every precaution will be taken to represent the physical condition of each lot exactly as it is known. Heifers that have never calved are in no way guaranteed as to the condition of their udders following calving.
3. Breeding Warranty: The seller guarantees all animals to be breeders, but not beyond the purchase price, with the following understanding:
4. Females--Any female when sold that has freshened within 90 days prior to the date of the sale is, by that fact, considered a breeder. Should any other female when fresh over 90 days fail to become pregnant within four months of sale date, or if less than eighteen months old when sold, fails to become pregnant by the time she reaches the age of 21 months, after having been bred to a bull known to be a breeder and after having been examined or treated by a licensed veterinarian, the matter shall be reported in writing to the seller within three months of the stated limit. The seller shall then have the privilege of four months' time in which to prove the animal a breeder by service to a registered Holstein bull before refunding the purchase price or making other settlement satisfactory to the buyer.
5. Females bred when sold and pronounced in calf are presumed to be pregnant but pregnancy is not guaranteed. The seller makes no warranty that pregnant cows or heifers will deliver calves or that they will carry calves full term. If, after the sale embryos or oocytes are recovered from a female or an attempt is made to superovulate her, this negates the breeding warranty unless there is a separate written agreement between buyer and seller.