



SPEEK-NJ UNO DANCE
DAM OF LOT 1



REGAN-ALH PLANET DELORIA VG-86-2YR DOM
2ND DAM OF LOT 1

1

THREE #1 EMBRYOS

• Worldwide Export Available

Holstein Plaza Contacts:

Steve Mower +1 240-520-5906

Jennifer Dingbaum +1 320-250-2412

Cogent Supershot

NLD 755898903 *TL *TD
PTA +2528M +100F +85P 72%R 4/14
PTA +1047NM\$ +7.4PL 2.71SCS +1.9DPR
PTA +2.20T +1.69UDC +1.63FLC 71%R
GTPI +2625G | GLPI +3511 | gRZG+161

Speek-NJ Uno Dance-ET

71619098 Born: January 3, 2013
GTPI+2435 +1444M +54F +50P +3.09T
• *The highest offspring of Deloria!*

Seagull-Bay Supersire-ET

69981349 *TV *TL *TY *TD
PTA +2434M +111F +78P 76%R 4/14
PTA +2.40T +1.71UDC +1.28FLC 76%R
GTPI +2420G

Rose Super Shot

DEU536745399 Very Good-86 VG-MS
2-00 2x 305d 23674 4.0 939 3.6 851

Amighetti Numero Uno-ET

ITA 17990915143 *TV *TL *TY
PTA +740M +80F +37P 78%R 4/14
PTA +2.93T +2.82UDC +1.96FLC 77%R
GTPI +2423G

Regan-Alh Planet Deloria-ET

66624771 VG-86 VG-MS @ 2-08 DOM
GTPI+2100 +1936M +58f +70P +1.69T
2-04 3x 305d 29400 4.4 1300 3.4 994

3rd thru 8th Dams

A-L-H Destiny-ET VG-87 GMD DOM
2-04 2x 365d 33199 3.8 1259 3.6 1202

• Over 20 sons in A.I.

Markwell Durham Daisy-ET

EX-92 EEEEE GMD DOM
6-07 2x 365d 40490 4.0 1628 3.3 1338
Life: 1200d 109000 3.8 4181 3.4 3740

• 3rd Sr 2-Yr Old, Int'l Holstein Show 2002

Markwell Luke Rapture-ET

EX-92 EEEEE 4E GMD DOM
5-06 2x 365d 39400 4.2 1649 3.3 1304
Life: 1859d 137840 3.9 5347 3.6 4964

Markwell Bstar E Raven-ET

EX-95 EEEEE 3E GMD DOM
4-09 2x 365d 36610 4.3 1580 3.4 1255
Life: 2387d 160020 4.1 6623 3.6 7533

• 1st W Fall Nat'l Aged Dry Cow 1997

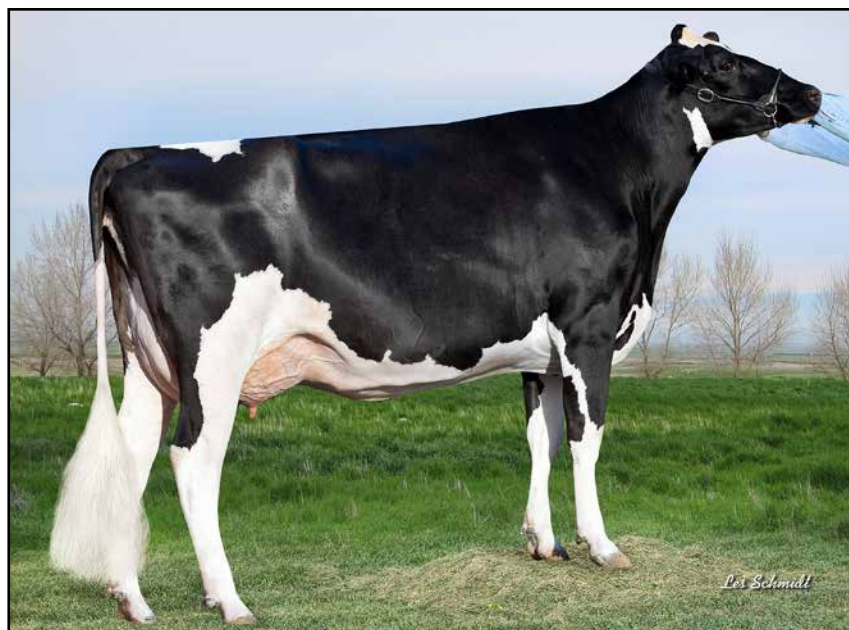
• Finalist for Queen of the Breed

Markwell Mark Elite EX-92 4E GMD DOM

7-00 2x 365d 36230 3.9 1426 3.2 1164
Life (4 Lacs): 211430 3.8 8109 3.6 7531

Rockalli Mars Emily EX-94 4E GMD DOM

6-03 2x 365d 26971 4.0 1080 3.4 904
Life (7 Lacs): 182966 3.8 7019 3.5 6329



RUGG-DOC OBSERVER CAYLOR VG-85
2ND DAM OF LOT 2

2

FOUR #1 EMBRYOS

• Worldwide Export Available; except cannot be shipped to Europe

Holstein Plaza Contacts:

Steve Mower +1 240-520-5906

Jennifer Dingbaum +1 320-250-2412

RockyMountain Lottomax

11445882C *TR *TV *TL *TY *TD
PTA +1553M +91F +75P 74%R 4/14

PTA +7.8PL 2.62SCS +1.9DPR

PTA +3.53T +2.91UDC +2.16FLC 73%R

GTPI +2565G

Rugg-Doc Epic Celine-ET

3011218771 Born: June 22, 2013

GTPI+2392 +1471M +40F +46P +3.09T

• No.13 GTPI Epic daughter in the breed

Amighetti Numero Uno-ET

ITA 17990915143 *TV *TL *TY

PTA +740M +80F +37P 78%R 4/14

PTA +2.93T +2.82UDC +1.96FLC 77%R

GTPI +2423G

Rockymountain Super Leita

10945258C Very Good-85-2YR 86-MS

2-00 3x 365d 25613 4.0 1032 3.1 791

Genervations Epic-ET

11104016 *TV *TL *TY *TD

PTA +1672M +46F +49P 76%R 4/14

PTA +2.42T +1.88UDC +2.21FLC 76%R

GTPI +2273G

Rugg-Doc Observer Caylor-ET

3007897737 Very Good-85

GTPI+2017 +747M +18F +32P +2.32T

2-01 3x 322d 22500 3.8 857 3.1 694

• Dam to Rugg-Doc Coman @Acceletared

3rd thru 7th Dams

Ralma Goldwyn Carmel 5-ETN

Very Good-88 VG-MS

2-10 2x 305d 28920 3.3 951 3.3 963

clone of:

• **Ralma Goldwyn Carmel EX-92 EEEEE**

2-00 3x 365d 34980 4.0 1404 3.5 1222

Ralma Christmas Cookie-ET

VG-89 EX-MS DOM

2-06 2x 365d 28710 4.5 1297 3.4 967

Ralma Christmas Fudge VG-88 GMD DOM

2-03 2x 365d 31810 4.1 1292 3.2 1027

• *Global Cow of the Year 2011*

Ralma Juror Faith EX-91 GMD DOM

4-02 2x 365d 47860 4.5 2165 3.1 1497

Life: 1352d 133520 4.5 5986 3.3 4358

• *Sons in AI*

• *Numerous VG & EX daughters*

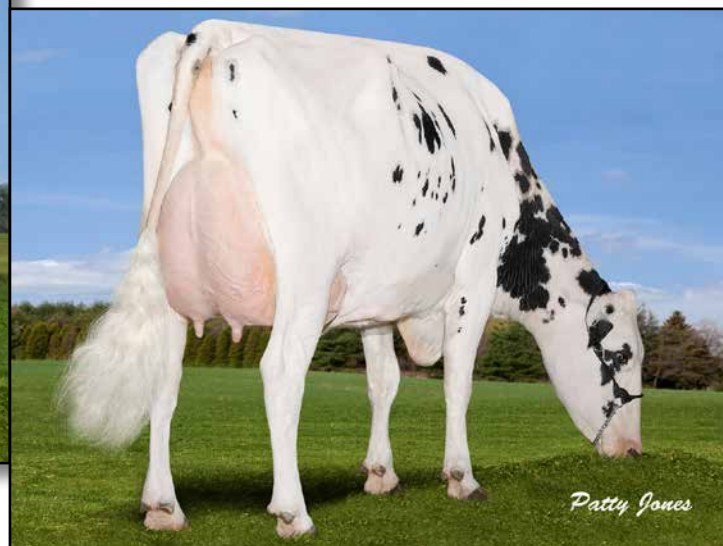
Ralma Leadman Fashion VG-89 VG-MS

4-10 2x 365d 40710 3.7 1494 3.0 1232

Life: 1243d 117710 3.6 4295 3.2 3743



MAPEL WOOD MAN O MAN BROOKE
DAM OF LOT 3



GEN-I-BEQ SHOTTLE BOMBI EX-92 94-MS
2ND DAM OF LOT 3

3

FOUR #1 IVF FEMALE EMBRYOS

• Eligible for shipment to the U.S. and export to EU and China

Holstein Plaza Contacts:

Steve Mower +1 240-520-5906

Jennifer Dingbaum +1 320-250-2412

Morningview Mcc Kingboy-ET

72044077 *TV *TL *TY *TD

PTA +1927M +72F +63P 74%R 4/14

PTA +846NM\$ +6.1PL 2.74SCS +1.8DPR

PTA +3.92T +3.09UDC +2.85FLC 74%R

GTPI +2602G

Mapel Wood Man O Man Brooke

11161743 Very Good-88 VG-MS @ 3-00

GLPI+3137 Conf. +9

GTPI+2253 +656NM\$ +2.25T

2-03 2x 227d 22090 4.1 904 3.2 710 inc.

• Full sister to Mapel Wood Boulder

• Maternal sister to Mapel Wood Brewmaster

De-Su Bkm McCutchen 1174-ET

69990138 *TV *TL *TY *TD

PTA +1277M +66F +51P 78%R 4/14

PTA +3.72T +3.36UDC +2.57FLC 78%R

GTPI +2384G

Morningview Super Megan

68654508 Very Good-85 VG-MS

2-01 3x 280d 22539 3.7 823 3.1 695 inc.

Long-Langs Oman Oman-ET

135746776 VG-85 GM 8/12 *TV *TL *TY

PTA +1102M +74F +65P 99%R 4/14

PTA +2.08T +1.78UDC +1.63FLC

GTPI +2185G

Gen-I-Beq Shottle Bombi

102438051 Excellent-92 94-MS

5-10 2x 365d 55290 3.7 2029 3.1 1714

2-01 2x 365d 31870 5.0 1609 3.4 1087

• Former #1 GLPI Cow in Canada

• Nom 2013 Canadian Cow of the Year

3rd thru 10th Dams

Gen-I-Beq Champion Bambi

EX-90 EX-MS 4*

2-02 2x 365d 26453 4.2 1122 3.4 904

3-09 2x 365d 31638 4.1 1305 3.2 1005

Braedale Baler Twine-ETS VG-86-CAN 33*

2-01 2x 365d 30906 4.9 1521 3.4 1052

Braedale Gypsy Grand VG-88-CAN 37*

5-06 2x 365d 34786 4.8 1660 3.3 1135

Braedale Moonriver-ET

GP-83-2YR-CAN GP-83-3YR-JPN

2-00 2x 365d 26012 4.1 1056 3.6 941

Sunnylodge Chief Vick-ET

VG-86-2YR-CAN 31*

2-04 2x 365d 31327 3.7 1146 3.4 1060

Sunnylodge Elevation Jan VG-87-CAN 13*

10-4 2x 305d 35150 4.8 1687 4.8 1254

Life (6 Lacs): 156959 4.3 6784 3.4 4564

Sunnylodge Jane Sheik VG-85-CAN 4*

4-11 2x 340d 27335 4.1 1127

Sunnylodge Fond Vickie VG-85-CAN 2*

4-06 2x 305d 23904 4.1 977

Sunnylodge Janice VG-CAN 4*

4-08 2x 365d 27782 3.8 1047

Life (10 Lacs): 216706 3.8 8203



**FREUREHAVEN FGS LAURA VG-88-2YR-CAN
DAM OF LOT 4**



**FREUREHAVEN FGS LUCY VG-85-2YR-CAN
FULL SISTER TO DAM OF LOT 4**

4

FIVE #1 EMBRYOS

• Worldwide Export Available

Holstein Plaza Contacts:

Steve Mower +1 240-520-5906

Jennifer Dingbaum +1 320-250-2412

Mr Donalynn Millennium

72518591 *TV *TL *TY *TD

PTA +1825M +66F +56P 73%R 4/14

PTA +3.0PL 2.86SCS +0.1DPR

PTA +4.07T +3.53UDC +2.84FLC 73%R

GTPI +2378G / DGV-LPI+3389 Conf.+22

Freurehaven FGS Laura

11160150C Very Good-88-2YR-CAN 88-MS

GTPI+2171 +1941M +57F +51P +3.70T

GPA-LPI+3044 / Conf. +17

2-00 2x 232d 20320 4.5 928 3.1 628 inc.

• Nominated All-Ontario Jr 2-Year-Old 2013

• One of the highest Snowman scored!

De-Su Bkm McCutchen 1174-ET

69990138 *TV *TL *TY *TD

PTA +1277M +66F +51P 78%R 4/14

PTA +3.72T +3.36UDC +2.57FLC 78%R

GTPI +2384G

Ronelee Hero Donalynn-ET

69716533 Very Good-86 VG-MS @ 2-05

2-04 3x 237d 25629 3.2 818 3.1 791 inc.

Flevo Genetics Snowman-ET

388965513NLD *TV *TL

PTA +2417M +77F +72P 96%R 4/14

PTA +2.70T +1.83UDC +2.16FLC 95%R

GTPI +2188G

Freurehaven Shottle Lautella

9690374C Very Good-89-3YR-CAN

GLPI+2597 / Conf+13

3-00 2x 183d 24021 3.9 930 3.1 730 inc.

1-09 2x 365d 35981 3.9 1389 3.1 1122

3rd thru 9th Dams

Freurehaven Lautella Bolton EX-92 CAN 1*

4-01 2x 365d 41665 3.9 1645 3.2 1351

Comestar Lautella Goldwyn VG-87 3*

4-11 3x 365d 46191 4.3 1973 3.3 1534

Comestar Lautelma Igniter VG-89 16*

4-02 2x 365d 49804 4.7 2343 3.5 1728

Life (2 Lacs): 113927 4.5 5115 3.6 4083

Comestar Lautelle Emerson-ET

VG-85-CAN 2*

2-02 2x 365d 30298 4.0 1197 3.6 1093

Comestar Lausan Black-ET VG-87-CAN 23*

5-04 2x 365d 37039 4.3 1587 3.6 1318

Life: 1818d 108246 4.4 4735 3.8 4151

Comestar Laurie Sheik-ET VG-88-CAN 23*

6-09 2x 365d 29864 4.5 1329 3.4 1016

Life (4 Lacs): 106564 4.5 4780 3.6 3885

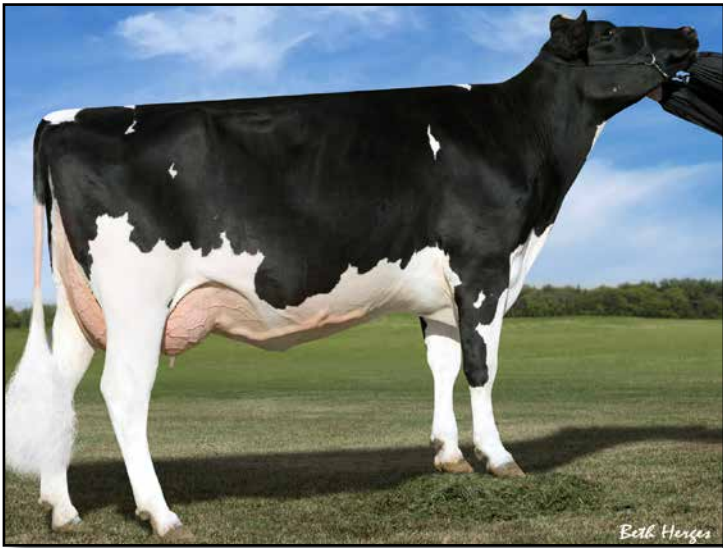
• HM All-Canadian Sr 2 Yr Old Cow 1989

• HM All-American Sr 2 Yr Old Cow 1989

Elysa Anthony Lea EX-CAN 15*

6-02 2x 365d 35770 3.9 1398 2.9 1049

Life (3 Lacs): 109580 4.0 4334 3.1 3439



LARCREST CREDIT VG-85 DOM
DAM OF LOT 5



LARCREST COMET-ETS VG-87 DOM
2ND DAM OF LOT 5

5

Holstein Plaza Contacts:

Steve Mower +1 240-520-5906

Jennifer Dingbaum +1 320-250-2412

Uecker Supersire Josuper-ET

70726929 *TL *TD

PTA +2971M +118F +92P 73%R 4/14

PTA +919NM\$ +4.8PL 2.91SCS -0.5DPR

PTA +2.24T +1.75UDC +1.08FLC 73%R

GTPI +2499G | GLPI+3368

Larcrest Credit-ET

56265392 Very Good-85 @ 2-11 DOM

GTPI+2221 +1927M +73F +56P +2.05T

2-06 2x 305d 30206 4.3 1357 3.4 1038 inc.

THREE #1 EMBRYOS

- Worldwide Export Available

Seagull-Bay Supersire-ET

69981349 *TV *TL *TY *TD

PTA +2434M +111F +78P 76%R 4/14

PTA +2.40T +1.71UDC +1.28FLC 76%R

GTPI +2420G

Uecker Beacon Joyfully-ET

68817934 Very Good-85 VG-MS

2-05 2x proj 24432 4.0 970 3.3 796

Badger-Bluff Fanny Freddie

60996956 *TV *TL *TY *TD

PTA +1223M +51F +40P 99%R 4/14

PTA +1.51T +1.53UDC +2.54FLC

GTPI +2239G

Larcrest Comet-ETS

53766363 Very Good-87 DOM @ 3-01

GTPI+2076 +1441M +93F +51P +2.20T

2-02 2x 305d 28190 4.3 1205 3.3 921

- 10 daughters over +2300G
- Full sister to Larcrest Cancun at ABS
- Full sister to O-Cosmopolitan

3rd thru 7th Dams

Larcrest Cosmopolitan VG-87 DOM

2-04 2x 365d 30930 4.1 1261 3.6 1119

Larcrest Oside Champagne-TW

EX-90 GMD DOM

2-03 2x 365d 29110 4.5 1322 3.7 1077

- 17 sons in A.I. worldwide

Larcrest Juror Chanel EX-93 3E GMD DOM

9-00 2x 365d 48460 4.0 1943 3.4 1648

Life: 2899d 245420 4.3 10482 3.6 8866

Larcrest Lindy Chandra VG-85

2-05 2x 365d 20896 4.8 993 3.8 803

Larcrest Inspiration Carly VG-87

3-05 2x 305d 21800 4.5 973 3.3 802



LARCREST CREDIT VG-85 DOM
DAM OF LOT 6



LARCREST COMET-ETS VG-87 DOM
2ND DAM OF LOT 6

6

FOUR #1 EMBRYOS

• *Worldwide Export Available*

Holstein Plaza Contacts:

Steve Mower +1 240-520-5906

Jennifer Dingbaum +1 320-250-2412

Morningview Mcc Kingboy-ET

72044077 *TV *TL *TY *TD

PTA +1927M +72F +63P 74%R 4/14

PTA +846NM\$ +6.1PL 2.74SCS +1.8DPR

PTA +3.92T +3.09UDC +2.85FLC 74%R

GTPI +2602G

Larcrest Credit-ET

56265392 Very Good-85 @ 2-11 DOM

GTPI+2221 +1927M +73F +56P +2.05T

2-06 2x 305d 30206 4.3 1357 3.4 1038 inc.

De-Su Bkm McCutchen 1174-ET

69990138 *TV *TL *TY *TD

PTA +1277M +66F +51P 78%R 4/14

PTA +3.72T +3.36UDC +2.57FLC 78%R

GTPI +2384G

Morningview Super Megan

68654508 Very Good-85 VG-MS

2-01 3x 280d 22539 3.7 823 3.1 695 inc.

Badger-Bluff Fanny Freddie

60996956 *TV *TL *TY *TD

PTA +1223M +51F +40P 99%R 4/14

PTA +1.51T +1.53UDC +2.54FLC

GTPI +2239G

Larcrest Comet-ETS

53766363 Very Good-87 DOM @ 3-01

GTPI+2076 +1441M +93F +51P +2.20T

2-02 2x 305d 28190 4.3 1205 3.3 921

• 10 daughters over +2300G

• Full sister to Larcrest Cancun at ABS

• Full sister to O-Cosmopolitan

3rd thru 6th Dams

Larcrest Cosmopolitan VG-87 DOM

2-04 2x 365d 30930 4.1 1261 3.6 1119

Larcrest Oside Champagne-TW

EX-90 GMD DOM

2-03 2x 365d 29110 4.5 1322 3.7 1077

• 17 sons in A.I. worldwide

Larcrest Juror Chanel EX-93 3E GMD DOM

9-00 2x 365d 48460 4.0 1943 3.4 1648

Life: 2899d 245420 4.3 10482 3.6 8866

Larcrest Lindy Chandra VG-85

2-05 2x 365d 20896 4.8 993 3.8 803

Larcrest Inspiration Carly VG-87

3-05 2x 305d 21800 4.5 973 3.3 802



LADYS-MANOR M RUBYD SHAY VG-86 VG-MS
2ND DAM OF LOT 7



LADYS-MANOR RUBY D SHAWN EX-90 GMD DOM
3RD DAM OF LOT 7



FIVE #2 EMBRYOS

- Worldwide Export Available

Holstein Plaza Contacts:

Steve Mower +1 240-520-5906
Jennifer Dingbaum +1 320-250-2412

Stantons Main Event-ET

11596146C
PTA +1340M +72F +54P 74%R 4/14
PTA +902NM\$ +7.1PL 2.64SCS +2.8DPR
PTA +3.08T +2.87UDC +2.98FLC 73%R
GTPI +2567G

Ladys-Manor Hdlr Shastee

72233190 Born: January 1, 2013
GTPI+2338 +1039M +90F +46P +2.76T
gRZG+150

Maternal sister to Shastee

Ladys-Manor Rd Sashay-ET GTPI+2484

Mountfield SSI Dcy Mogul

3006972816 *TV *TL *TY *TD
PTA +1377M +79F +49P 78%R 4/14
PTA +2.81T +2.99UDC +2.78FLC 77%R
GTPI+2394G

Stantons Super Elda

11084001C Good Plus-83-2YR
2-01 3x 365d 31343 4.1 1274 3.3 1038

Seagull-Bay Headliner-ET

69981349 *TV *TL *TY *TD
PTA +1699M +98F +66P 76%R 4/14
PTA +2.63T +2.03UDC +2.06FLC 76%R
GTPI +2326G

Ladys-Manor M Rubyd Shay

70189428 Very Good-86 VG-MS
GTPI+2191 +311M +60F +25P +2.72T
2-00 2x 217d 18821 4.5 843 3.2 596 inc.
• Several sons in A.I.
• Maternal sister to Shamrock
• Completes 9 generations of Bull Mothers

3rd thru 11th Dams

Ladys-Manor Ruby D Shawn

EX-90 GMD DOM
4-04 2x 365d 37920 4.8 1808 3.4 1280

- Dam of the former #1 GTPI Shamrock
- Dam of Shakira former #1 Cow Locator List

Ladys-Manor Ruby D-ET

EX-90 GMD DOM
4-10 2x 365d 39790 5.3 2127 3.4 1341
Life: 1279d 124840 5.1 6335 3.4 4286

Ladys-Manor Ruby Jen

EX-94 2E GMD DOM
4-02 2x 365d 46920 4.6 2141 3.2 1514
Life: 1416d 135960 4.6 6282 3.4 4615

Ladys-Manor Temp Jeana-ET VG-87

2-01 2x 365d 26850 4.5 1209 3.3 889

Ladys-Manor Tempress Jem

EX-91 GMD DOM
3-02 2x 365d 34450 4.7 1602 3.2 1116

Ladys-Manor Top Gun Jemini-ET

EX-93 3E GMD DOM
3-11 2x 365d 36080 3.5 1246 3.3 1175
Life: 2089d 150300 3.8 5699 3.2 4781

Ladys-Manor Delightful Jem

VG-88 GMD DOM
6-02 2x 365d 31890 4.1 1314 3.1 994

Ladys-Manor Donnas Delight VG-85

8-09 2x 365d 30780 3.7 1141 3.1 969
Life: 2392d 166610 3.7 6114

Ladys-Manor Nancy Archie EX-90 2E GMD

8-08 2x 338d 25930 3.9 1016
Life: 2647d 156000 3.7 5834



PINE-TREE 1782 TOUBI 4831 *PO VG-85-2YR VG-MS
2ND DAM OF LOT 8

8

FOUR #1 EMBRYOS

• Worldwide Export Available

Holstein Plaza Contacts:

Steve Mower +1 240-520-5906

Jennifer Dingbaum +1 320-250-2412

Morningview Mcc Kingboy-ET

72044077 *TV *TL *TY *TD

PTA +1927M +72F +63P 74%R 4/14

PTA +846NM\$ +6.1PL 2.74SCS +1.8DPR

PTA +3.92T +3.09UDC +2.85FLC 74%R

GTPI +2602G

Hermnvill Supersire 3218-ET *PO

72039525

Born: January 22, 2013

GTPI+2156 +1578M +71F +49P +1.76T

De-Su Bkm McCutchen 1174-ET

69990138 *TV *TL *TY *TD

PTA +1277M +66F +51P 78%R 4/14

PTA +3.72T +3.36UDC +2.57FLC 78%R

GTPI +2384G

Morningview Super Megan

68654508 Very Good-85 VG-MS

2-01 3x 280d 22539 3.7 823 3.1 695 inc.

Seagull-Bay Supersire-ET

69981349 *TV *TL *TY *TD

PTA +2434M +111F +78P 76%R 4/14

PTA +2.40T +1.71UDC +1.28FLC 76%R

GTPI +2420G

Pine-Tree 1782 Toubi 4831 *PO

69804595 Very Good-85 VG-MS @ 2-11

GTPI+1962 +430M +39F +25P +2.32T

2-06 2x 39d 2944 4.6 135 3.2 94 inc.

3rd thru 9th Dams

Pine-Tree Monica Goldene-ET

EX-90 EEEVV DOM

4-09 3x 305d 32750 3.8 1238 3.3 1079

Life: 1686d 150480 4.0 6081 3.5 5233

Pine-Tree Missy Monica-ET

VG-85 GMD DOM

4-11 3x 305d 36010 3.5 1248 3.1 1103

Wesswood-HC Rudy Missy-ET

EX-92 3E DOM

4-11 3x 365d 40880 4.1 1665 3.2 1308

Life: 1262d 119610 4.1 4885 3.2 3804

Wesswood Elton Mimi EX-90 GMD DOM

3-05 2x 365d 35380 3.3 1160 3.2 1121

Wesswood Mandingo Ivy VG-87 VEEVV

6-05 2x 365d 36330 3.6 1305 3.0 1087

Life: 1835d 144060 3.4 4933 3.1 4412

Wesswood Astro Matt Esther

VG-87 GMD DOM

6-08 2x 365d 31860 3.5 1125 3.1 982

Life: 1847d 140110 3.6 5029 3.2 4424

Wesswood Bell Claudette

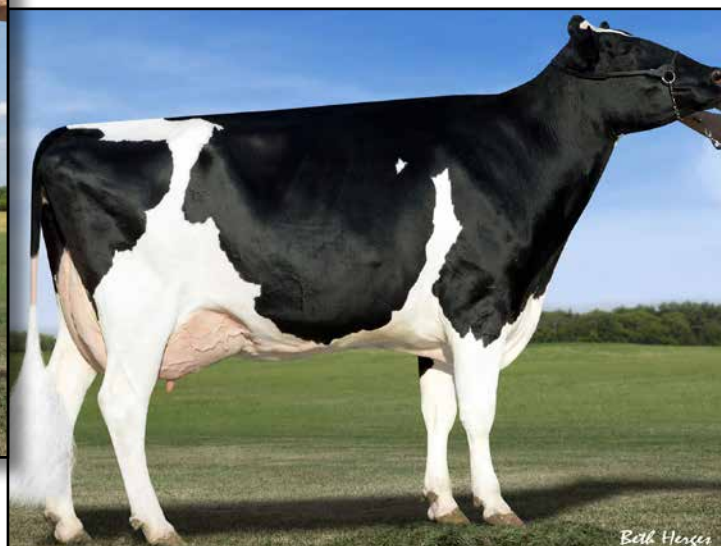
VG-87 GMD DOM

9-10 2x 365d 38810 3.6 1383 2.9 1140

Life: 3634d 280980 3.6 9997 3.1 8625



KHW SUPER ADERYN VG-85-2YR
2ND DAM OF LOT 9



KHW GOLDWYN AIKO-ET *RC EX-91 DOM
3RD DAM OF LOT 9



FOUR #1 EMBRYOS

- Worldwide Export Available

Holstein Plaza Contacts:

Steve Mower +1 240-520-5906

Jennifer Dingbaum +1 320-250-2412

Woodcrest Mogul Yoder-ET

72254526

PTA +1830M +106F +69P 73%R 4/14

PTA +924NM\$ +5.3PL 2.74SCS +0.7DPR

PTA +3.09T +2.60UDC +2.34FLC 73%R

GTPI +2554G/ gRZG+155

Ms Aderyn Shan 2334

72437881 Born June, 14, 2013

GTPI+2321 +3.22T +2.76UDC +2.45FLC

GLPI+3021 Conf.+14

Maternal sister to 2334

Ms Aderyn Mc Abigail-ET *RC

GTPI+2382 +668NM\$ +3.54T

- No. 14 GTPI RC heifer in the US

Mountfield SSI Dcy Mogul

3006972816 *TV *TL *TY *TD

PTA +1377M +79F +49P 78%R 4/14

PTA +2.81T +2.99UDC +2.78FLC 77%R

GTPI+2394G

Woodcrest Planet Yakara

3008363689 Very Good-85

2-00 3x 305d 27530 3.6 1004 3.3 906

Ladys-Manor Man-O-Shan

70528492 100%RHA-NA TV TL TY TD

PTA +1766M +84F +64P 77%R 4/14

PTA +2.93T +2.52UDC +1.40FLC 4/14

GTPI +2332G

KHW Super Aderyn *RC

140969320 Very Good-85 VG-MS @2-09

2-07 2x 233d 20020 3.9 784 3.6 724 inc.

- Several offspring over +2350

- One of the highest *RC cows in the breed

GTPI +2275 and 3.04T (4/14)

3rd thru 9th Dams

KHW Goldwyn Aiko

EX-91 EEEVE 2* DOM

5-07 2x 365d 29149 5.1 1499 4.0 1160

- Sister to KHW Regiment Apple Red EX-96

Kamps-Hollow Altitude-ET *RC

EX-95 2E DOM *CV

7-00 2x 365d 39690 4.7 1849 3.5 1385

Life: 1844d 144460 4.4 6295 3.7 5288

- Red Impact Cow of the Year 2009

- Dam of Advent, Jotan & Acme

Clover-Mist Alisha-ET *RC EX-93 3E DOM

8-07 2x 365d 36920 4.2 1553 3.4 1258

Life: 2999d 226470 4.7 10659 3.6 8149

Clover-Mist Augy Star-ET *RC

EX-94 4E DOM

7-10 3x 365d 43140 5.0 2136 3.3 1421

Life: 2486d 206250 4.7 9793 3.5 7187

D-R-A August EX-96 EEEE 4E DOM

8-05 2x 365d 27460 4.3 1187 3.2 871

Life: 3443d 190200 4.4 8281 3.3 4457

- Nominated All-American Aged Cow 1986

D-R-A Ideal Precious Leader EX-90 2E

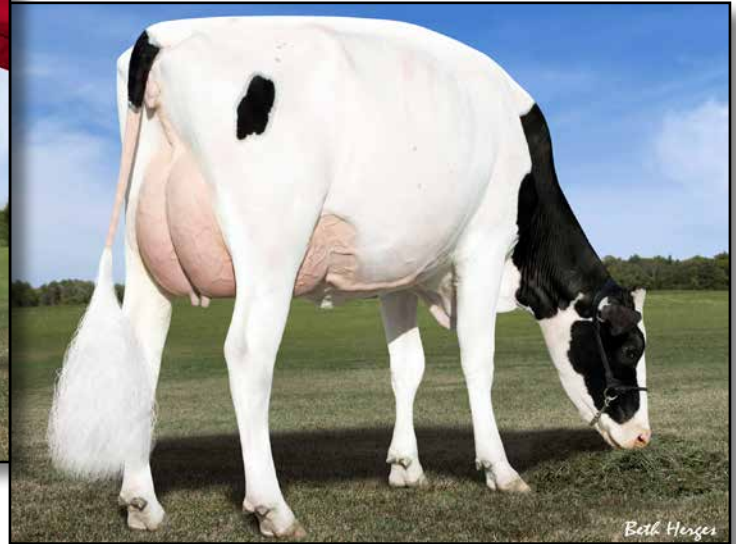
7-06 2x 358d 20090 3.9 787 3.4 675

D-R-A Princess Lad Leader EX-90 3E

9-05 2x 305d 19160 4.2 809



DYMENTHOLM SUNVIEW SOIREE-RED
MATERNAL SISTER OF LOT 10



DES-Y-GEN PLANET SILK-ET *RC EX-90
DAM OF LOT 10

10

TWO #1 EMBRYOS

• Worldwide Export Available

Holstein Plaza Contacts:

Steve Mower +1 240-520-5906

Jennifer Dingbaum +1 320-250-2412

Texel Beauty Debutant-Red

NLD 762769560 *TV *TL *TY *TD
PTA +1004M +55F +52P 73%R 4/14
PTA +623NM +3.7PL 2.81SCS +2.1DPR
PTA +1.95T +1.91UDC +1.48FLC 70%R
GTPI +2201G / gRZG+157

Des-Y-Gen Planet Silk-ET *RC *TY

106109413C Excellent-90 92-MS @ 4-03
GTPI+2076 +1215M +80F +38P +1.98T
4-01 2x 196d 19313 4.2 771 3.1 602 inc.
2-02 2x 365d 29990 4.5 1351 3.2 9600
• #14 GTPI *RC Cow, Locator List 4/14
• Nominated HI Global Red Impact Cow
• Dam of Sympatico, Seneca and Stoic

Dam of:

Dymentholm Sunview Sassy-ET *RC

GTPI+2436 +845NM\$ +2.88T

Josey-LLC Uno Sangaria-ET *RC

GTPI+2386 +769NM\$ +3.34T

Kings-Ransom O Dakker-ET

65828007 *RC *TV *TL *TY *TD
PTA +735M +71F +45P 87%R 4/14
PTA +2..08T +2.07UDC +1.83FLC 76%R
GTPI+2108G

Texel Beauty Desire

NLD 940538124

• Next dam: Scientific Gold Dish Rae

Ensenada Taboo Planet

60597003 EX-90 *TV *TR *TL *TY *TD
PTA +2105M +63F +62P 99%R 4/14
PTA +1.73T +1.27UDC -0.56FLC 99%R
GTPI +2073G

Gen-I-Beq Bolton Silence *RC

104862615C Very Good-85-2YR-CAN
2-04 2x 365d 30002 4.6 1391 3.6 1069
4-09 2x 365d 29107 4.1 1184 3.5 1027

3rd thru 11th Dams

Gen-I-Beq Goldwyn Secret VG-87-CAN 7*

5-05 2x 365d 30573 4.5 1389 3.4 1038

Gen-I-Beq Durham Sherry VG-87-CAN 8*

5-02 2x 365d 40036 3.9 1574 3.2 1268

Glen Drummond Splendor

VG-86-2YR-CAN 37*

4-10 2x 314d 26510 4.2 1124 3.2 840

Glen Drummond Aero Flower

VG-88-CAN 18*

2-03 2x 326d 25622 4.0 1032 3.4 882

Glen Drummond Shower EX-CAN 13*

4-10 2x 365d 28583 4.8 1380 3.6 1016

Glen Drummond S C Jo Beth

EX-2E-CAN 7*

Life (6 Lacs): 141637 4.2 5994 3.2 3593

• Grand Champion Brant-Wentworth 1984

Glen Drummond Matt Beth VG-85 4*

11-10 2x 365d 25038 3.7 935

Life (5 Lacs): 105953 4.1 4295

Glen Drummond Marquis Beth VG-CAN

Life (8 Lacs): 112688 4.2 4766

Ferglynn Rag Apple Bertha VG-CAN 3*

7-00 2x 365d 27796 4.7 1303

Life (9 Lacs): 208857 4.0 8344



**MS APPLES ALANNA-ET *RC VG-88 VG-MS
DAM OF LOT 11**



**KHW REGIMENT APPLE-RED EX-96 DOM
2ND DAM OF LOT 11**

11

Holstein Plaza Contacts:

Steve Mower +1 240-520-5906

Jennifer Dingbaum +1 320-250-2412

Texel Beauty Debutant-Red

NLD 762769560 *TV *TL *TY *TD
PTA +1004M +55F +52P 73%R 4/14
PTA +623NM +3.7PL 2.81SCS +2.1DPR
PTA +1.95T +1.91UDC +1.48FLC 70%R
GTPI +2201G / gRZG +157

Ms Apples Alanna-ET *RC *CV

69822263 Very Good-88 VVVVV
GTPI+1805 +3.12T +2.69UDC +2.91FLC
2-06 2x 181d 14241 4.4 631 3.3 476 inc.
• Last test 83 lb/day with 5.1%F and 3.7%P

Full sister to Alanna

Ms Apples Ainsley-ET *RC VG-86

• Dam of Mr Ansly Addiction-P-Red-ET
GTPI+2255 +3.36PTAT by Ladd-P

FIVE #1 EMBRYOS

- Worldwide Export Available

Kings-Ransom O Dakker-ET

65828007 *RC *TV *TL *TY *TD
PTA +735M +71F +45P 87%R 4/14
PTA +2.08T +2.07UDC +1.83FLC 76%R
GTPI+2108G

Texel Beauty Desire

NLD 940538124
• Next dam: Scientific Gold Dish Rae

Braedale Goldwyn

CAN 10705608 GP-CAN EX'05 *TV *TL
PTA -9M +31F +13P 99%R 4/14
PTA +2.80T +2.45UDC +2.36FLC
GTPI +1879G

KHW Regiment Apple-Red-ET

135511521 Excellent-96 3E DOM
GTPI+1956 +3.63T +3.27UDC +4.06FLC
4-01 2x 365d 35750 4.7 1682 3.7 1314
7-00 2x 365d 33280 5.0 1654 3.6 1191
5-03 2x 365d 30810 5.0 1527 3.9 1212
2-02 2x 365d 28930 4.5 1297 3.6 1033
Life: 1972d 158680 4.8 7683 3.8 6034

APPLE!

- Reserve Grand Ch, Int'l R&W Show 2013
- 1st 125,000 lb. cow, Grand Int'l R&W 2013
- Grand Ch, Grand Int'l R&W Show 2011
- Unanimous All-American Jr 2-Yr-Old 2006
- All-American R&W Jr 2-Yr-Old 2006
- HHM All-American Jr 3-Yr-Old 2007
- Nom All-American R&W 5-Yr-Old 2009
- Res Grand Ch, Royal Winter R&W 2009
- HI World Champion R&W Cow 2010
- \$1,000,000 Sale Topper Global Glamour 2008

3rd thru 8th Dams

Kamps-Hollow Altitude-ET

EX-95 EEEEE 2E DOM
2-00 2x 305d 24510 3.8 922 3.7 904
7-00 2x 305d 34450 4.5 1562 3.4 1163

- Dam to proven bulls Advent, Jotan & Acme
- Red Impact Cow of the Year 2009

Clover-Mist Alisha-ET *RC EX-93 3E DOM

8-07 2x 365d 36920 4.2 1553 3.4 1258
Life: 2999d 226470 4.7 10659 3.6 8149

Clover-Mist Augy Star-ET *RC

EX-94 4E DOM
7-10 3x 365d 43140 5.0 2136 3.3 1421
Life: 2486d 206250 4.7 9793 3.5 7187

D-R-A August EX-96 EEEE 4E DOM

8-05 2x 365d 27460 4.3 1187 3.2 871
Life: 3443d 190200 4.4 8281 3.3 4457

- Nominated All-American Aged Cow 1986

D-R-A Ideal Precious Leader EX-90 2E

7-06 2x 358d 20090 3.9 787 3.4 675

D-R-A Princess Lad Leader EX-90 3E

9-05 2x 305d 19160 4.2 809



**BOSSIDE APPLE ALICE-RED
DAM OF LOT 12**



**KHW REGIMENT APPLE-RED EX-95 DOM
3RD DAM OF LOT 12**

12

Holstein Plaza Contacts:

Steve Mower +1 240-520-5906
Jennifer Dingbaum +1 320-250-2412

Texel Beauty Debutant-Red

NLD 762769560 *TV *TL *TY *TD
PTA +1004M +55F +52P 73%R 4/14
PTA +623NM +3.7PL 2.81SCS +2.1DPR
PTA +1.95T +1.91UDC +1.48FLC 70%R
GTPI +2201G | gRZG +157

Bosside Apple Alice-Red-ET *CV

71886803 Born: April 3, 2013
GTPI+2256 +3.74T +3.97UDC +3.09FLC
• No. 13 GTPI RED heifer in the US
• No. 2 PTAT RED Heifer in the US

SIX #1 EMBRYOS

• Worldwide Export Available

Kings-Ransom O Dakker-ET

65828007 *RC *TV *TL *TY *TD
PTA +735M +71F +45P 87%R 4/14
PTA +2.08T +2.07UDC +1.83FLC 76%R
GTPI+2108G

Texel Beauty Desire

NLD 940538124
• Next dam: Scientific Gold Dish Rae

Lirr Special Effect-Red-ET *PO

70504985 *TV *TL *TY *TD
PTA +272M +40F +19P 76%R 4/14
PTA +1.85T +2.50UDC +2.01FLC 75%R
GTPI +2107G

Ms Apples Alanna-ET *RC *CV

69822263 Very Good-88 VVVVV
GTPI+1805 +3.12T +2.69UDC +2.91FLC
2-06 2x 294d 22252 4.5 1008 3.6 807 inc.

3rd thru 9th Dams

KHW Regiment Apple-Red-ET

EX-96 EEEEE 3E DOM
4-01 2x 365d 35750 4.7 1682 3.7 1314
• Reserve Grand Ch, Int'l R&W Show 2013
• 1st 125,000 lb. cow, Grand Int'l R&W 2013
• Grand Ch, Grand Int'l R&W Show 2011
• Unanimous All-American Jr 2-Yr-Old 2006
• All-American R&W Jr 2-Yr-Old 2006
• HHM All-American Jr 3-Yr-Old 2007
• Nom All-American R&W 5-Yr-Old 2009
• Res Grand Ch, Royal Winter R&W 2009
• HI World Champion R&W Cow 2010
• \$1,000,000 Sale Topper Global Glamour 2008

Kamps-Hollow Altitude-ET

EX-95 EEEEE 2E DOM
2-00 2x 305d 24510 3.8 922 3.7 904
7-00 2x 305d 34450 4.5 1562 3.4 1163
• Dam to proven bulls Advent, Jotan & Acme
• Red Impact Cow of the Year 2009

Clover-Mist Alisha-ET *RC EX-93 3E DOM

8-07 2x 365d 36920 4.2 1553 3.4 1258
Life: 2999d 226470 4.7 10659 3.6 8149

Clover-Mist Augy Star-ET *RC

EX-94 4E DOM
7-10 3x 365d 43140 5.0 2136 3.3 1421
Life: 2486d 206250 4.7 9793 3.5 7187

D-R-A August EX-96 EEEE 4E DOM

8-05 2x 365d 27460 4.3 1187 3.2 871
Life: 3443d 190200 4.4 8281 3.3 4457

• Nominated All-American Aged Cow 1986

D-R-A Ideal Precious Leader EX-90 2E

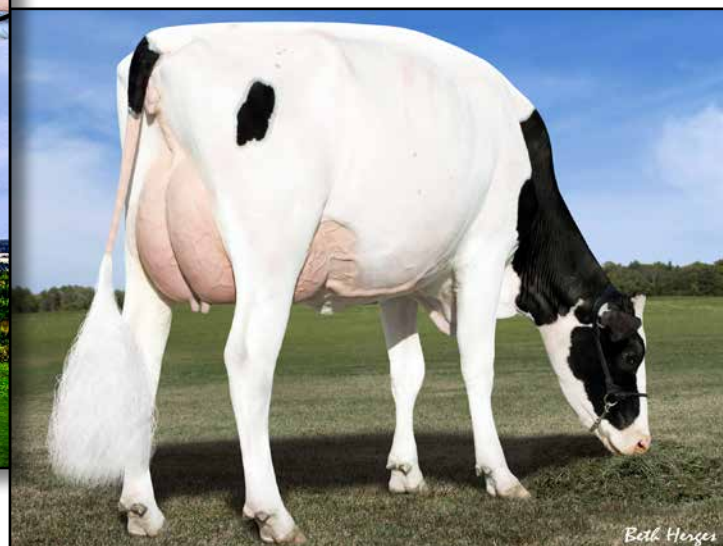
7-06 2x 358d 20090 3.9 787 3.4 675

D-R-A Princess Lad Leader EX-90 3E

9-05 2x 305d 19160 4.2 809



JOSEY-LLC UNO SANGARIA-ET *RC
MATERNAL SISTER TO DAM OF LOT 13



DES-Y-GEN PLANET SILK-ET *RC EX-90 91-MS
2ND DAM OF LOT 13

13

THREE #1 EMBRYOS

- Worldwide Export Available

Holstein Plaza Contacts:

Steve Mower +1 240-520-5906
Jennifer Dingbaum +1 320-250-2412

Texel Beauty Debutant-Red

NLD 762769560 *TV *TL *TY *TD
PTA +1004M +55F +52P 73%R 4/14
PTA +623NM +3.7PL 2.81SCS +2.1DPR
PTA +1.95T +1.91UDC +1.48FLC 70%R
GTPI +2201G / gRZG +157

Josey-LLC Fernand Scoop *RC

72389120 Born: February 1, 2013
GTPI +2251 +1057M +90F +45P +2.12T

Maternal sister to:

Dymentholm Sunview Sassy-ET *RC

GTPI +2436 +845NM\$ +2.88T

Josey-LLC Uno Sangaria-ET *RC

GTPI +2386 +769NM\$ +3.34T

Kings-Ransom O Dakker-ET

65828007 *RC *TV *TL *TY *TD
PTA +735M +71F +45P 87%R 4/14
PTA +2..08T +2.07UDC +1.83FLC 76%R
GTPI +2108G

Texel Beauty Desire

NLD 940538124
• Next dam: Scientific Gold Dish Rae

Cabon Fernand

FRA 2941261203 *TV *TL *TY
PTA +1301M +94F +57P 76%R 4/14
PTA +2.12T +1.90UDC +1.82FLC 75%R
GTPI +2230G

Des-Y-Gen Planet Silk-ET *RC *TY

106109413C Excellent-90 92-MS @ 4-03
GTPI +2076 +1215M +80F +38P +1.98T
4-01 2x 196d 19313 4.2 771 3.1 602 inc.
2-02 2x 365d 29990 4.5 1351 3.2 960
• #14 GTPI *RC Cow, Locator List 4/14
• Nominated HI Global Red Impact Cow
• Dam of Sympatico, Seneca and Stoic

3rd thru 12th Dams

Gen-I-Beq Bolton Silence *RC

VG-85-2YR-CAN
2-04 2x 365d 30002 4.6 1391 3.6 1069
Gen-I-Beq Goldwyn Secret VG-87-CAN 4*
5-05 2x 365d 30573 4.5 1389 3.4 1038
Gen-I-Beq Durham Sherry VG-87-CAN 7*
5-02 2x 365d 40036 3.9 1574 3.2 1268

Glen Drummond Splendor

VG-86-2YR-CAN 36*
4-10 2x 314d 26510 4.2 1124 3.2 840

Glen Drummond Aero Flower

VG-88-CAN 18*
2-03 2x 326d 25622 4.0 1032 3.4 882
Glen Drummond Shower EX-CAN 13*
4-10 2x 365d 28583 4.8 1380 3.6 1016

Glen Drummond S C Jo Beth

EX-2E-CAN 7*
Life (6 Lacs): 141637 4.2 5994 3.2 3593
• Grand Champion Brant-Wentworth 1984

Glen Drummond Matt Beth VG-85 4*

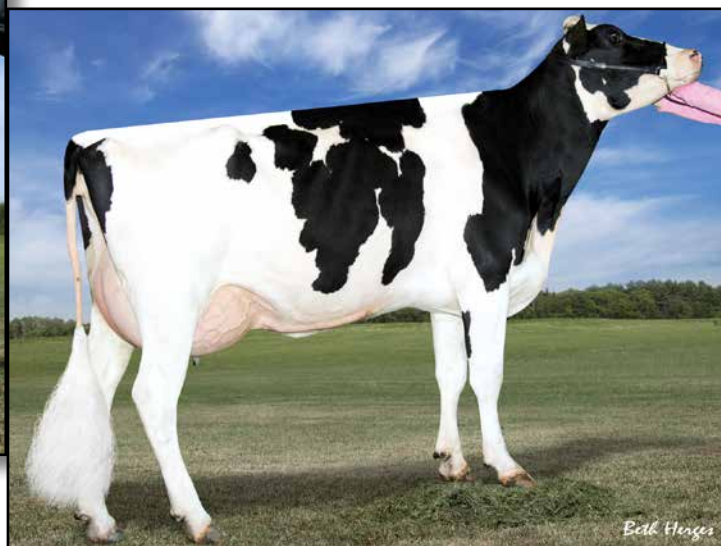
11-10 2x 365d 25038 3.7 935
Life (5 Lacs): 105953 4.1 4295

Glen Drummond Marquis Beth VG-CAN

Life (8 Lacs): 112688 4.2 4766
Ferglynn Rag Apple Bertha VG-CAN 3*
7-00 2x 365d 27796 4.7 1303
Life (9 Lacs): 208857 4.0 8344



**SPEEK-NJ EFFECT DEPOT *RC * PO
DAM OF LOT 14**



**REGAN-ALH PLANET DELORIA VG-86-2YR DOM
2ND DAM OF LOT 14**

14

THREE #1 EMBRYOS

• Worldwide Export Available

Holstein Plaza Contacts:

Steve Mower +1 240-520-5906

Jennifer Dingbaum +1 320-250-2412

Kerndtway Eraser P-ET

69502427*TR *PC *TY

PTA +1686M +78F +67P 73%R 4/14

PTA +740NM\$ +4.9PL 2.88SCS +0.4DPR

PTA +2.98T +2.37UDC +2.14FLC 71%R

GTPI +2396G / gRZG+145

Speek-NJ Effect Depot-ET *RC *PO

72389152 Born: April 15, 2013

GTPI+2092 +1228M +45F +45P +1.41T

Da-So-Burn MOM Earnhardt P

68972328 VG-86 *TR *PO *TV *TY *TD

PTA +1391M +70F +68P 76%R 4/14

PTA +1.96T +1.17UDC +1.65FLC 75%R

GTPI +2163G

Golden-Oaks Obsrvr Dixie-ET

69823260 Very Good-85 DOM

2-00 2x 305d 22590 4.0 897 3.1 706

Lirr Special Effect-Red-ET *PO

70504985 *TV *TL *TY *TD

PTA +272M +40F +19P 76%R 4/14

PTA +1.85T +2.50UDC +2.01FLC 75%R

GTPI +2107G

Regan-Alh Planet Deloria-ET

66624771 VG-86 VG-MS @ 2-08 DOM

GTPI+2100 +1936M +58f +70P +1.69T

2-04 3x 305d 29400 4.4 1300 3.4 994

3rd thru 8th Dams

A-L-H Destiny-ET

61361722 VG-87-3YR GMD DOM

2-04 2x 365d 33199 3.8 1259 3.6 1202

• Over 20 sons in A.I.

Markwell Durham Daisy-ET

EX-92 EEEEE GMD DOM

6-07 2x 365d 40490 4.0 1628 3.3 1338

Life: 1200d 109000 3.8 4181 3.4 3740

• 3rd Sr 2-Yr Old, Int'l Holstein Show 2002

Markwell Luke Rapture-ET

EX-92 EEEEE 4E GMD DOM

5-06 2x 365d 39400 4.2 1649 3.3 1304

Life: 1859d 137840 3.9 5347 3.6 4964

Markwell Bstar E Raven-ET

EX-95 EEEEE 3E GMD DOM

4-09 2x 365d 36610 4.3 1580 3.4 1255

Life: 2387d 160020 4.1 6623 3.6 7533

• 1st W Fall Nat'l Aged Dry Cow 1997

• Finalist for Queen of the Breed

Markwell Mark Elite EX-92 4E GMD DOM

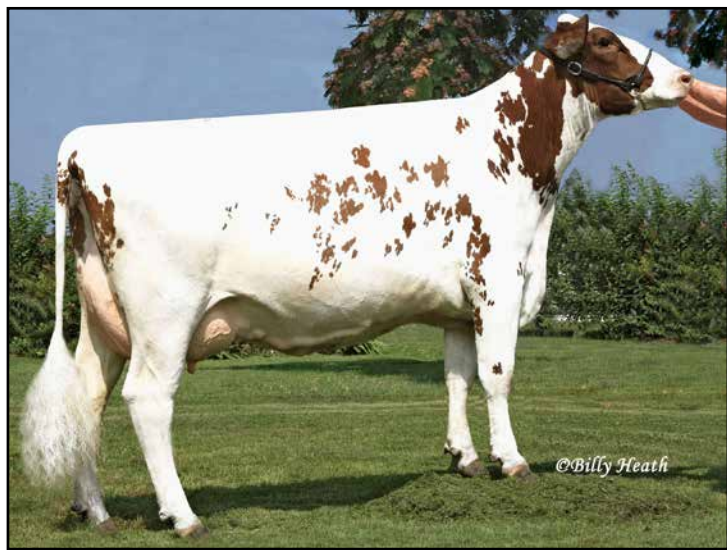
7-00 2x 365d 36230 3.9 1426 3.2 1164

Life (4 Lacs): 211430 3.8 8109 3.6 7531

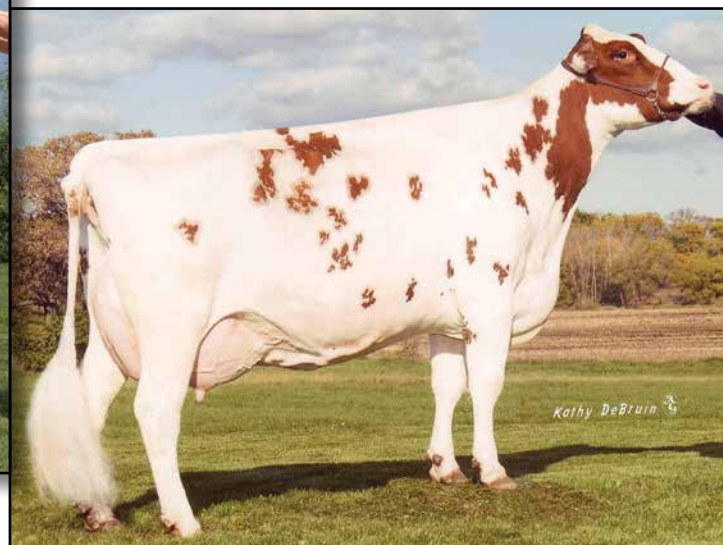
Rockalli Mars Emily EX-94 4E GMD DOM

6-03 2x 365d 26971 4.0 1080 3.4 904

Life (7 Lacs): 182966 3.8 7019 3.5 6329



GOLDEN-OAKS RMN RAE2-RAE-RED-ET EX-90
2ND DAM OF LOT 15



GOLDE-OAKS PERK-RAE-RED *P
3RD DAM OF LOT 15

15

FIVE #1 EMBRYOS

• Worldwide Export Available

Holstein Plaza Contacts:

Steve Mower +1 240-520-5906

Jennifer Dingbaum +1 320-250-2412

Morningview Mcc Kingboy-ET

72044077 *TV *TL *TY *TD

PTA +1927M +72F +63P 74%R 4/14

PTA +846NM\$ +6.1PL 2.74SCS +1.8DPR

PTA +3.92T +3.09UDC +2.85FLC 74%R

GTPI +2602G

Kulp-Dale Ernht Reba *RC *PO

72234100

Born: February 12, 2013

GTPI+2058 +898M +37F +48P +2.38T

De-Su Bkm McCutchen 1174-ET

69990138 *TV *TL *TY *TD

PTA +1277M +66F +51P 78%R 4/14

PTA +3.72T +3.36UDC +2.57FLC 78%R

GTPI +2384G

Morningview Super Megan

68654508 Very Good-85 VG-MS

2-01 3x 280d 22539 3.7 823 3.1 695 inc.

Da-So-Burn MOM Earnhardt P

68972328 VG-86 *TR *PO *TV *TY *TD

PTA +1391M +70F +68P 76%R 4/14

PTA +1.96T +1.17UDC +1.65FLC 75%R

GTPI +2163G

Golden-Oaks Rmn Rae2-Red-ET

62454339 Excellent-90

4-08 2x 365d 28390 4.4 1255 3.4 966

2-03 2x 365d 21287 4.4 940 3.6 769

• 8th Generation Excellent from the Roxys

3rd thru 9th Dams

Golden-Oaks Perk-Rae-Red-ET *PO

EX-90 EX-90-MS DOM

4-03 2x 365d 33710 4.7 1595 3.7 1243

Life: 1394d 117590 4.0 4707 3.6 4242

Scientific Beauty Rae-ET *RC EX-90 DOM

4-03 2x 365d 33710 4.7 1595 3.7 1243

Life: 1394d 117590 4.0 4707 3.6 4242

Scientific Jubilant Rae-ET EX-90 DOM

5-11 2x 365d 38880 4.1 1608 3.6 1403

Life: 1394d 117590 4.0 4707 3.6 4242

C Hanoverhill Tony Rae

EX-96 3E GMD DOM

6-11 2x 365d 40220 4.1 1661 3.3 1331

Life: 2247d 166396 4.1 6904 3.4 5612

• Grand Champion Western National 1993

C Hanoverhill TT Roxette-ET

EX-94 2E GMD

10-0 3x 365d 35040 4.3 1519 3.0 1063

Life: 2104d 164789 4.1 6760 3.1 3587

Mil-R-Mor Roxette EX-CAN 30*

7-01 2x 365d 24531 4.7 1153

Life (6 Lacs): 121418 4.7 5728

C Glenridge Citation Roxy EX-97 4E GMD

10-1 2x 365d 25280 4.2 1060

Life: 3620d 209784 4.5 9471

• Queen of the Breed I and II

C Norton Court Model Vee EX-90

6-06 2x 365d 22483 3.9 875

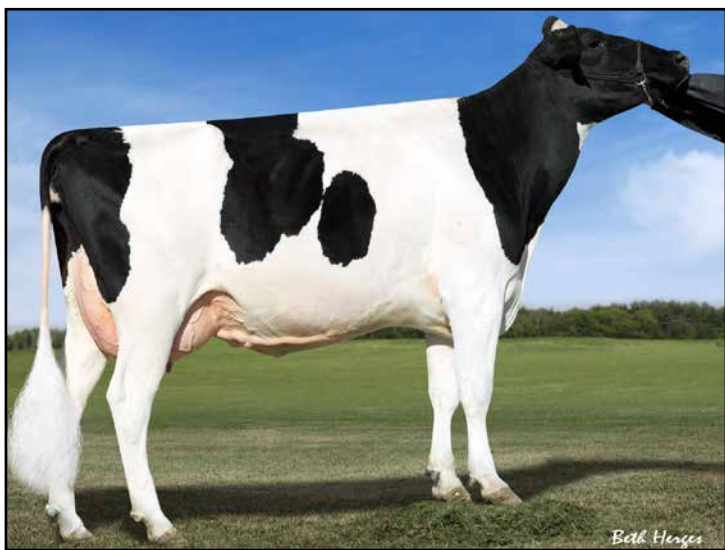
Life: 4183d 218629 3.9 8581

• All-American Produce of Dam 1977, '78, '79

Norton Court Reflection Vale VG-85 5*

8-11 2x 332d 20631 3.7 765

Life (14 Lacs): 249583 3.7 9295



DE-SU 410-ET VG-85 VG-MS
DAM OF LOT 16



SULLY SHOTTLE MAY-TW EX-90 EEEEE DOM
2ND DAM OF LOT 16

16

FOUR #1 EMBRYOS

• Worldwide Export Available

Holstein Plaza Contacts:

Steve Mower +1 240-520-5906

Jennifer Dingbaum +1 320-250-2412

Woodcrest Mogul Yoder-ET

72254526 *TV *TL *TY *TD
PTA +1830M +106F +69P 73%R 4/14
PTA +924NM\$ +5.3PL 2.74SCS +0.7DPR
PTA +3.09T +2.60UDC +2.34FLC 73%R
GTPI +2554G / GLPI+3325 /gRZG+155

De-Su 410-ET

69490564 Very Good-85 VG-MS @ 3-00
GTPI+2187 +992M +26F +42P +3.06T
2-04 2x 305d 26198 3.8 955 3.3 872
Seven daughter over +2300G including:
• De-Su Uno 2543-ET GTPI+2455

Mountfield SSI Dcy Mogul

3006972816 *TV *TL *TY *TD
PTA +1377M +79F +49P 78%R 4/14
PTA +2.81T +2.99UDC +2.78FLC 77%R
GTPI+2394G

Woodcrest Planet Yakara

3008363689 Very Good-85
2-00 3x 305d 27530 3.6 1004 3.3 906

De-Su Observer-ET

65917481 VG-88 *TR *TV *TL *TY *TD
PTA +1476M +50F +45P 99%R 4/14
PTA +2.70T +3.02UDC +0.41FLC
GTPI +2168G

Sully Shottle May-TW

138218285 Excellent-90 EEEEE DOM
2-02 2x 365d 34110 3.2 1095 3.3 1130
5-04 2x 365d 38970 3.5 1354 3.1 1226

3rd thru 10th Dams

Ms Sully Oman Muetze-ET EX-90 DOM
4-08 2x 365d 33860 3.4 1164 3.4 1150

Johann Marshall Mint

VG-85 VG-MS
5-02 2x 365d 40100 3.0 1222 3.1 1244
Life: 1541d 124180 3.1 3880 3.0 4059

Poly-Kow Rudolph Mink-ET

VG-86 GMD DOM
2-00 2x 365d 29290 3.6 1054 3.4 987

Poly-Kow Linda Mindy VG-88 GMD DOM

3-08 2x 365d 39550 4.0 1589 3.0 1175
Life: 2057d 150290 3.9 5820 3.0 4556

Footprint Nick Milan

VG-89 GMD DOM
5-10 2x 365d 34530 4.1 1430 3.3 1128

Footprint Mazda Command

VG-85 GMD DOM
3-03 2x 305d 30280 4.2 1270 3.2 959

Footprint Ned Boy Mercedes VG-85

Life: 2085d 134700 3.5 4772 2.8 3760

Footprint Cor-Vel Madonna-TW VG-85

4-03 2x 350d 19520 3.5 684 2.9 560



DUCKETT-SA BRAXTON FRAN VG-86 VG-MS @ 2-08
DAM OF LOT 17



HARVUE ROY FROSTY EX-97 EX-MS 3E GMD
2ND DAM OF LOT 17



FOUR #1 EMBRYOS

• Worldwide Export Available

Holstein Plaza Contacts:

Steve Mower +1 240-520-5906

Jennifer Dingbaum +1 320-250-2412

Sonnek GC Corvette-ET

71391400 *TV *TL *TY *TD

PTA +450M +29F +20P 76%R 4/14

PTA +1.1PL 2.64SCS -0.4DPR

PTA +4.17T +3.15UDC +4.03FLC 76%R

GTPI +2085G

Duckett-Sa Braxton Fran

70929538 Very Good-86 VG-MS @ 2-08

• New milking photo coming now!

Mr Chassity Gold Chip-ET

140145553 100%RHA-NA *TR *TV *TL

PTA +211M +23F +0P 94%R 4/14

PTA +3.70T +3.31UDC +3.16FLC 89%R

GTPI +1996G

Sonnek Damion Charlie-ET

138545776 Excellent-94 EEEEE

3-04 2x 365d 26240 4.0 1050 3.5 992

Regancrest S Braxton

61898423 EX-95 *TR *TV *TL *TY *TD

PTA +1556M +13F +19P 99%R 4/14

PTA +3.70T +1.97UDC +2.30FLC 98%R

GTPI +1521G

Harvue Roy Frosty

52378753 Excellent-97 EEEEE 3E GMD

5-07 2x 365d 44710 5.0 2222 3.0 1332

6-08 2x 365d 40600 5.3 2154 3.1 1247

3-10 2x 365d 37496 4.5 1679 3.1 1174

2-03 2x 365d 24750 4.2 1043 3.3 815

Life: 1824d 167800 4.8 8097 3.2 5322

FROSTY!

- Nominated All-American Aged Cow 2012
- Supreme Champ, WDE 2009 & 2010
- All-American Aged Cow 2010
- Grand Champion International Show 2010
- Unanimous All-American 5-Year-Old 2009
- 1st 5-Year-Old, International Show 2009
- All-World & People's Choice 2009
- Unanimous All-Canadian 5-Year-Old 2009
- Res Grand Champ, Royal Winter Fair 2009
- 1st 5-Year-Old, Royal Winter Fair 2009
- All-American Senior 3-Year-Old 2007
- Int & Res Grand Champ, Int'l Show 2007
- 1st Senior 3-Year-Old, Int'l Show 2007
- Nom All-American Senior 2-Year-Old 2006

3rd thru 7th Dams

Harvue Sam Heidi EX-93 EEEEE 3E DOM

5-07 2x 305d 29640 4.5 1334 2.9 868

Life: 2480d 183870 4.5 8335 3.2 5964

Harvue Skybuck Harmony VG-88

2-00 2x 263d 17520 4.4 775 3.4 600

• 2nd Summer Yearling Eastern Nat'l 1994

Harvue Melvin Hallie VG-88

4-08 2x 365d 33691 4.4 1490 3.2 1093

Harvue Bell Harrison VG-86 GMD DOM

8-11 2x 365d 38040 3.4 1301 3.0 1124

Harvue Libido Harrison VG-87

6-00 2x 365d 22359 3.8 842



HODGLYNN SID TRINITY
DAM OF LOT 18



STARBRITE LYSTER LYNSDAY EX-96 3E EX-96-MS
2ND DAM OF LOT 18

18

FIVE #1 EMBRYOS

• Worldwide Export Available

Holstein Plaza Contacts:

Steve Mower +1 240-520-5906

Jennifer Dingbaum +1 320-250-2412

Val-Bisson Doorman

107281711C 99%RHA-I *TV *TL *TY *TD

PTA +946M +60F +50P 77%R 4/14

PTA +3.8PL 2.53SCS +0.0DPR

PTA +4.02T +3.20UDC +2.18FLC 76%R

GTPI +2370G

Hodglyn Sid Trinity

140082045

1-11 2x 76d 6775 3.7 251 2.9 196 inc.

Proj: 25999 3.8 983 3.1 794

• Will be classified soon!

De-Su 521 Bookem-ET

66636657 *TR *TV *TL *TY *TD

PTA +1585M +49F +61P 99%R 4/14

PTA +2.62T +2.14UDC +1.64FLC 97%R

GTPI +2279G

Val-Bisson Shottle Imelda

106173432 Very Good-85-2YR-CAN

1-11 2x 335d 23783 4.1 985 3.7 8826

Wilcoxview Jasper

128620869 *TL *TV *TL

PTA -574M +24F -18P 99%R 4/14

PTA +2.80T +1.93UDC +0.64FLC

GTPI +1374G

Starbrite Lyster Lyndsay

8611749 Excellent-96-CAN EEEEE 3E 1*

6-02 2x 365d 34769 4.5 1556 3.2 1105

Life: 2389d 189468 4.3 8058 3.3 6296

LYNSDAY!

- Res All-American 125,000Lb. Cow 2013
- All-American 125,000 lb Cow 2012
- All-Canadian 125,000 lb Cow 2012
- Reserve All-American 2010
- All-Canadian 2010
- Res Grand Champion Royal 2010
- Res All-Canadian Mature Cow 2009
- Nom All-American Aged Cow 2009

3rd thru 10th Dams

Starbrite Leader Dotty EX-93 4E 7*

6-09 2x 365d 38569 4.7 1828 2.9 1122

Life: 2577d 179889 4.2 7599 3.1 5492

Starbrite Charles Dot EX-4E-CAN 3*

5-02 2x 365d 32095 4.1 1301 3.1 1010

Life: 2240d 134610 4.0 5383 2.9 3948

Starbrite Broker Dotty GP-83-2YR-CAN

2-00 2x 365d 18197 3.9 712 3.3 596

Starbrite Senator Dolly VG-86-4YR-CAN 3*

8-09 2x 365d 36098 3.2 1151 3.1 1102

Life: 2742d 212488 3.2 6817 3.1 6638

Starbrite Tempo Delta VG-87-CAN EX-MS

3-02 2x 365d 22322 3.5 776 2.9 650

Wrico E P Dale VG-86-6YR-CAN

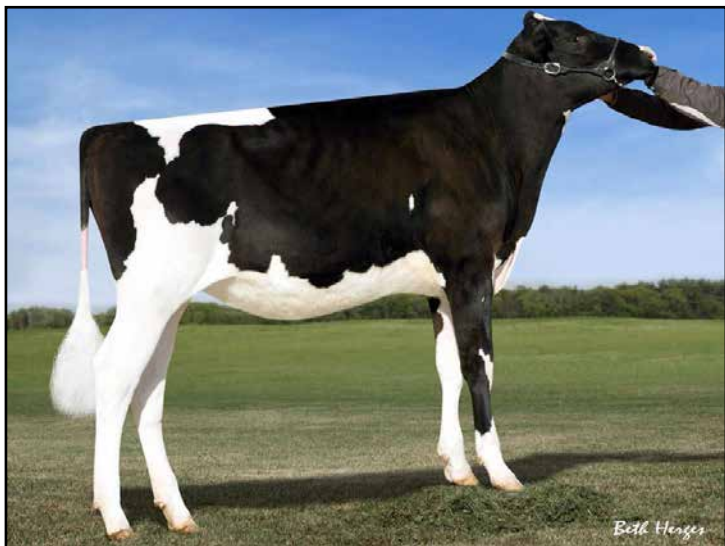
4-04 2x 365d 26142 3.5 922 3.1 802

Wrico Empress Dale VG-87-4YR-CAN 3*

7-11 2x 365d 32571 4.1 1327

Wrico Mark Dale VG-85-3YR-CAN

8-11 2x 365d 30315 4.3 1303



MS DEB GC DINA
DAM OF LOT 19



EASTRIVER GOLD DEB 850 EX-92 2E
2ND DAM OF LOT 19



SIX #1 EMBRYOS

• Worldwide Export Available

Holstein Plaza Contacts:

Steve Mower +1 240-520-5906

Jennifer Dingbaum +1 320-250-2412



De-Su Bkm McCutchen 1174-ET

69990138 *TV *TL *TY *TD

PTA +1277M +66F +51P 78%R 4/14

PTA +655NM\$ +3.6PL 2.81SCS +0.4DPR

PTA +3.72T +3.36UDC +2.57FLC 78%R

GTPI +2384G

Ms Deb Gold Chip Dina-ET

72127567

Born: June 7, 2013

De-Su 521 Bookem-ET

66636657 *TR *TV *TL *TY *TD

PTA +1585M +49F +61P 99%R 4/14

PTA +2.62T +2.14UDC +1.64FLC 97%R

GTPI +2279G

Sully Shottle May-TW

138218285 Excellent-90 EEEEE DOM

5-04 2x 365d 38970 3.5 1354 3.1 1226

Mr Chassity Gold Chip-ET

140145553 100%RHA-NA *TR *TV *TL

PTA +211M +23F +0P 94%R 4/14

PTA +3.70T +3.31UDC +3.16FLC 89%R

GTPI +1996G

Eastriver Gold Deb 850

10822640 Excellent-92 EEVEE 2E @ 4-01

1-11 2x 365d 24632 4.4 1096 3.3 808

• Grand Champion Mid-West Spring 2013

• HM Int. Champion NY Spring 2013

• Res. All-American Milking Yearling 2011

• Res. All-Canadian Milking Yearling 2011

• 2nd Milk. Yr. & BU Royal Winter Fair 2011

• Junior Champion Atlantic Summer 2010

3rd thru 10th Dams

Homestead Astronomical Deb EX-95-3E

5-09 2x 365d 34665 3.8 1314 3.4 1171

• 3rd 5-Yr-Old Atlantic Summer Show 2010

• Res. Jr. Champ. Atlantic Summer Show 2005

Homestead Debbie Approval VG-86-3YR

4-05 2x 365d 25648 3.2 820 3.1 783

Homestead Skychief Delsie VG-87-4YR

7-02 2x 365d 27923 3.9 1080 3.1 860

Life: 8Lact. 195308 3.8 7465 3.1 6085

Homestead Lincoln Danae GP-81 1*

7-01 2x 365d 27227 4.7 1276 3.6 977

Life: 7Lact. 147256 4.7 6905 3.5 5218

Homestead Debbie Brent VG-86

Life: 7Lact. 135118 4.0 5340 3.6 4817

Homestead Lucky Paula GP-80-CAN

Life: 6Lact. 106685 3.4 3653

Homestead Empress Pear EX-90-CAN

Life: 7Lact. 144624 4.0 5756

Homestead Rockman Gem VG-CAN 3*

Life: 7Lact. 134816 3.9 5216



**RMW PEMBROKE ADORA VG-86-3YR VG-MS
2ND DAM OF LOT 20**



**RC-LC GOLDWYN ATM EX-92 EX-MS DOM
3RD DAM OF LOT 20**

20

FIVE #1 IVF FEMALE EMBRYOS

• Eligible for shipment in the U.S. and export to the EU and China

Holstein Plaza Contacts:

Steve Mower +1 240-520-5906

Jennifer Dingbaum +1 320-250-2412

Mr Ansly Addiction-P-Red-ET

72128091 *TV

PTA -457M +36F +21P 73%R 4/14

PTA +629NM\$ +5.3PL 2.55SCS +1.9DPR

PTA +3.36T +3.77UDC +1.86FLC 72%R

GTPI +2255G

Aurora-Rama Ava *RC *TY

71679429

Born: August 8, 2012

GTPI+2230 +590M +55F +39P +3.04T

Tiger-Lily Ladd P-Red-ET

69405976 *B/R *TV *TL *TY

PTA -48M +30F +29P 76%R 4/14

PTA +3.20T +2.80UDC +2.23FLC

GTPI +2170G

Ms Apples Ainsley-ET *RC

69822262 Very Good-86 VG-MS @ 2-09

2-04 2x 180d 14680 4.5 667 3.2 470 inc.

Hunsberger Alchemy-ET *RC

69080973 *RC *TV *TL *TY *TD

PTA +860M +28F +40P 76%R 4/14

PTA +2.54T +2.56UDC +1.05FLC

GTPI +2120G

RMW Pembroke Adora-ET *RC

69468810 Very Good-86 VG-MS @ 3-01

GTPI+1934 +493M +66F +31P +2.05T

2-03 3x 365d 33560 4.5 1520 3.1 1055

3rd thru 9th Dams

RC-LC Goldwyn ATM EX-92 EX-MS DOM

3-10 2x 365d 37630 4.9 1848 3.3 1223

• **HM Jr All-American Jr 2-Year-Old 2008**

• **Dam of Armitage**

Catocin O Man Lia 1122 VG-86 DOM

5-08 2x 318d 28620 4.8 1367 3.1 893

Catocin Convnc Luster 576 VG-86

2-02 2x 365d 31020 3.8 1167 3.1 971

Catocin Duster 442 VG-85 DOM

3-07 2x 365d 30390 3.4 1035 3.2 983

Catocin MGR Luckste GP-82

3-00 2x 365d 31060 4.0 1246 3.3 1029

Unicorn Lucky Lynn VG-85 GMD

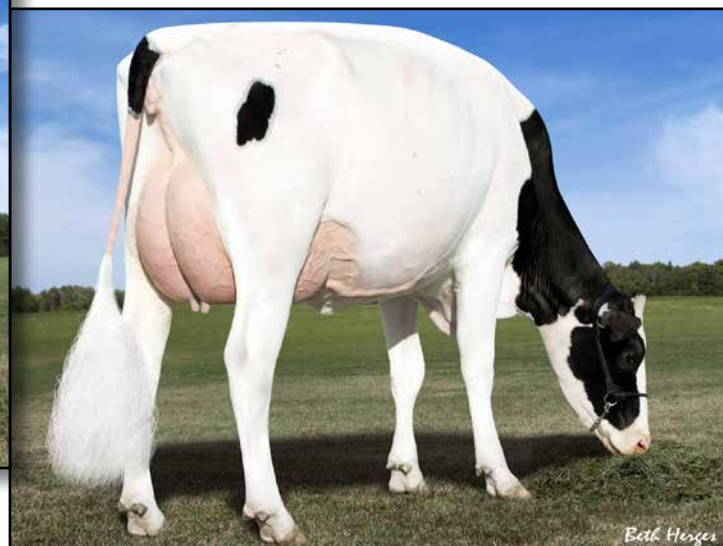
5-06 2x 365d 37580 3.5 1320

Unicorn Chairman Lynn EX-90 GMD

7-02 2x 365d 36990 3.8 1416



DES-Y-GEN PLANET SILK-ET *RC EX-90 92-MS
2ND DAM OF LOT 21



DES-Y-GEN PLANET SILK-ET *RC EX-90 92-MS
2ND DAM OF LOT 21

21

FIVE #1 EMBRYOS

• Worldwide Export Available

Holstein Plaza Contacts:

Steve Mower +1 240-520-5906

Jennifer Dingbaum +1 320-250-2412

Texel Beauty Debutant-Red

NLD 762769560 *TV *TL *TY *TD
PTA +1004M +55F +52P 73%R 4/14
PTA +623NM +3.7PL 2.81SCS +2.1DPR
PTA +1.95T +1.91UDC +1.48FLC 70%R
GTPI +2201G / gRZG +157

Josey-LLC Oak Snoopy-ET *RC

72389140 Born: July 1, 2013
GTPI+2226 +1293M +81F +48P +2.38T

Maternal sister to:

Dymentholm Sunview Sassy-ET *RC

GTPI+2436 +845NM\$ +2.88T

Josey-LLC Uno Sangaria-ET *RC

GTPI+2386 +769NM\$ +3.34T

Kings-Ransom O Dakker-ET

65828007 *RC *TV *TL *TY *TD
PTA +735M +71F +45P 87%R 4/14
PTA +2..08T +2.07UDC +1.83FLC 76%R
GTPI+2108G

Texel Beauty Desire

NLD 940538124
• Next dam: Scientific Gold Dish Rae

Pine-Tree Altoak-ET

69169951 *TV *TL *TD *TY
PTA +1737M +71F +48P 77%R 4/14
PTA +2.56T +2.30UDC +1.45FLC 76%R
GTPI +2330G

Des-Y-Gen Planet Silk-ET *RC *TY

106109413C Excellent-90 92-MS @ 4-03
GTPI+2076 +1215M +80F +38P +1.98T
4-01 2x 196d 19313 4.2 771 3.1 602 inc.
2-02 2x 365d 29990 4.5 1351 3.2 960
• #14 GTPI *RC Cow, Locator List 4/14
• Nominated HI Global Red Impact Cow
• Dam of Sympatico, Seneca and Stoic

3rd thru 12th Dams

Gen-I-Beq Bolton Silence *RC

VG-85-2YR-CAN
2-04 2x 365d 30002 4.6 1391 3.6 1069

Gen-I-Beq Goldwyn Secret VG-87-CAN 4*

5-05 2x 365d 30573 4.5 1389 3.4 1038

Gen-I-Beq Durham Sherry VG-87-CAN 7*

5-02 2x 365d 40036 3.9 1574 3.2 1268

Glen Drummond Splendor

VG-86-2YR-CAN 36*
4-10 2x 314d 26510 4.2 1124 3.2 840

Glen Drummond Aero Flower

VG-88-CAN 18*
2-03 2x 326d 25622 4.0 1032 3.4 882

Glen Drummond Shower EX-CAN 13*

4-10 2x 365d 28583 4.8 1380 3.6 1016

Glen Drummond S C Jo Beth

EX-2E-CAN 7*
Life (6 Lacs): 141637 4.2 5994 3.2 3593

• Grand Champion Brant-Wentworth 1984

Glen Drummond Matt Beth VG-85 4*

11-10 2x 365d 25038 3.7 935

Life (5 Lacs): 105953 4.1 4295

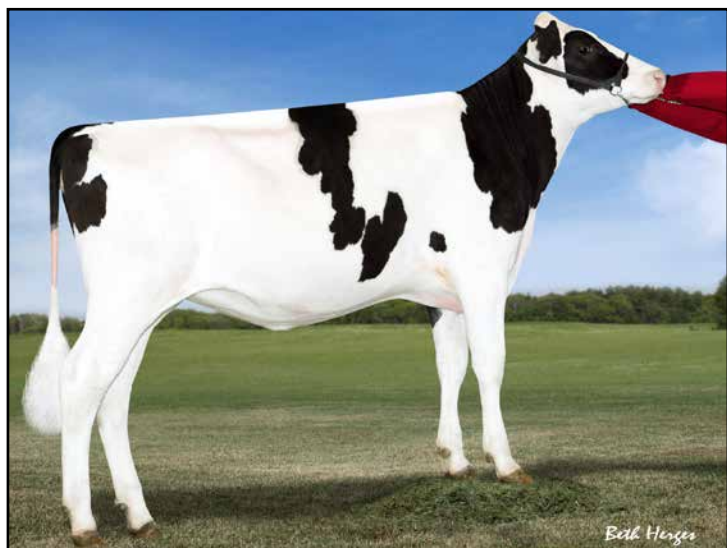
Glen Drummond Marquis Beth VG-CAN

Life (8 Lacs): 112688 4.2 4766

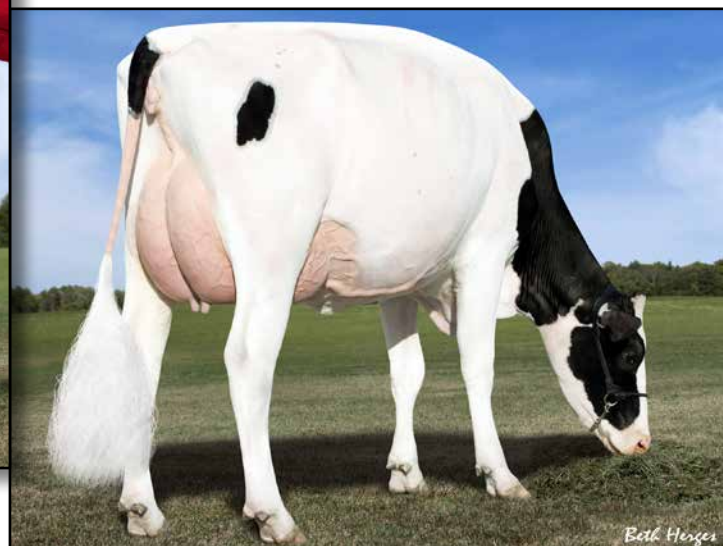
Ferglynn Rag Apple Bertha VG-CAN 3*

7-00 2x 365d 27796 4.7 1303

Life (9 Lacs): 208857 4.0 8344



DYMENTHOLM SUNVIEW SASSY-ET *RC
MATERNAL SISTER TO LOT 22



DES-Y-GEN PLANET SILK-ET *RC EX-90 91-MS
2ND DAM OF LOT 22

22

FOUR #1 EMBRYOS

• Worldwide Export Available

Holstein Plaza Contacts:

Steve Mower +1 240-520-5906

Jennifer Dingbaum +1 320-250-2412

Texel Beauty Debutant-Red

NLD 762769560 *TV *TL *TY *TD
PTA +1004M +55F +52P 73%R 4/14
PTA +623NM +3.7PL 2.81SCS +2.1DPR
PTA +1.95T +1.91UDC +1.48FLC 70%R
GTPI +2201G / gRZG +157

Josey-LLC Fernand Shauna *RC

72389119 Born: February 1, 2013
GTPI+2179 +1099M +100F +44P +2.03T

Maternal sister to:

Dymentholm Sunview Sassy-ET *RC

GTPI+2436 +845NM\$ +2.88T

Josey-LLC Uno Sangaria-ET *RC

GTPI+2386 +769NM\$ +3.34T

Kings-Ransom O Dakker-ET

65828007 *RC *TV *TL *TY *TD
PTA +735M +71F +45P 87%R 4/14
PTA +2..08T +2.07UDC +1.83FLC 76%R
GTPI+2108G

Texel Beauty Desire

NLD 940538124
• Next dam: Scientific Gold Dish Rae

Cabon Fernand

FRA 2941261203 *TV *TL *TY
PTA +1301M +94F +57P 76%R 4/14
PTA +2.12T +1.90UDC +1.82FLC 75%R
GTPI +2230G

Des-Y-Gen Planet Silk-ET *RC *TY

106109413C Excellent-90 92-MS @ 4-03
GTPI+2076 +1215M +80F +38P +1.98T
4-01 2x 196d 19313 4.2 771 3.1 602 inc.
2-02 2x 365d 29990 4.5 1351 3.2 960
• #14 GTPI *RC Cow, Locator List 4/14
• Nominated HI Global Red Impact Cow
• Dam of Sympatico, Seneca and Stoic

3rd thru 12th Dams

Gen-I-Beq Bolton Silence *RC

VG-85-2YR-CAN
2-04 2x 365d 30002 4.6 1391 3.6 1069

Gen-I-Beq Goldwyn Secret VG-87-CAN 4*

5-05 2x 365d 30573 4.5 1389 3.4 1038

Gen-I-Beq Durham Sherry VG-87-CAN 7*

5-02 2x 365d 40036 3.9 1574 3.2 1268

Glen Drummond Splendor

VG-86-2YR-CAN 36*
4-10 2x 314d 26510 4.2 1124 3.2 840

Glen Drummond Aero Flower

VG-88-CAN 18*
2-03 2x 326d 25622 4.0 1032 3.4 882

Glen Drummond Shower EX-CAN 13*

4-10 2x 365d 28583 4.8 1380 3.6 1016

Glen Drummond S C Jo Beth

EX-2E-CAN 7*
Life (6 Lacs): 141637 4.2 5994 3.2 3593

• Grand Champion Brant-Wentworth 1984

Glen Drummond Matt Beth VG-85 4*

11-10 2x 365d 25038 3.7 935

Life (5 Lacs): 105953 4.1 4295

Glen Drummond Marquis Beth VG-CAN

Life (8 Lacs): 112688 4.2 4766

Ferglynn Rag Apple Bertha VG-CAN 3*

7-00 2x 365d 27796 4.7 1303

Life (9 Lacs): 208857 4.0 8344



MS EMILY EMARION
DAM OF LOT 23



TRAMILDA-N BAXTER EMILY-ET VG-85-2YR-CAN
2ND DAM OF LOT 23

23

FIVE #1 EMBRYOS

- Worldwide Export Available

Holstein Plaza Contacts:

Steve Mower +1 240-520-5906
Jennifer Dingbaum +1 320-250-2412

Woodcrest Mogul Yoder-ET

72254526
PTA +1830M +106F +69P 73%R 4/14
PTA +924NM\$ +5.3PL 2.74SCS +0.7DPR
PTA +3.09T +2.60UDC +2.34FLC 73%R
GTPI +2554G / gRZG+155

Ms Emily Emarion-ET

72406164 Born: January 8, 2013
GTPI+2284+1385M +87F +50P +2.43T

Mountfield SSI Dcy Mogul

3006972816 *TV *TL *TY *TD
PTA +1377M +79F +49P 78%R 4/14
PTA +2.81T +2.99UDC +2.78FLC 77%R
GTPI+2394G

Woodcrest Planet Yakara

3008363689 Very Good-85
2-00 3x 305d 27530 3.6 1004 3.3 906

Seagull-Bay Supersire-ET

69981349 *TV *TL *TY *TD
PTA +2342M +107F +75P 76%R 12/13
PTA +2.38T +1.66UDC +1.22FLC 75%R
GTPI +2413G

Tramilda-N Baxter Emily

139232811 VG-85-2YR-CAN VG-MS
GTPI+2141 +969M +60F +30P +2.18T
2-05 2x 282d 30946 4.2 1287 3.2 1001
• Full sister to Tramilda-N Escalade
• Dam to Emmett, Epic and Highway

3rd thru 13th Dams

Wabash-Way Evett-ET VG-86 DOM
2-02 2x 365d 34187 4.9 1660 3.1 1046
Crockett-Acres Elita-ET VG-87 DOM
2-02 2x 365d 39010 3.8 1480 3.5 1383
Crockett -Acres Mtot Elly-ET
EX-90 EX-MS GMD DOM
6-04 2x 283d 38840 3.3 1286 3.4 1302
Wauregan Rudolph Ellymae-ET EX-90
4-06 3x 365d 40210 3.6 1455 3.4 1375
Whittier-Farms Lead Mae-ET
EX-95 3E GMD
8-07 3x 357d 41270 4.8 1962 3.5 1440
Life: 1613d 126960 4.3 5473 3.6 4597
Raymau Bstar Monica-ET VG-89 DOM
2-01 2x 146d 12280 3.8 471 3.3 405
Juniper Jason Maria VG-87 EX-MS DOM
2-03 2x 365d 20260 4.3 868 3.6 736
JDM-Pride Valiant Maggie
EX-91 GMD DOM
6-00 2x 365d 35540 4.1 1441 3.3 1186
Life: 1666d 119120 4.2 5002 3.6 4281
La-Ko-Land Penstate Sadie
VG-87 GMD DOM
8-03 2x 336d 24420 3.3 818 3.2 781
Life: 2480d 166909 3.5 5732 3.2 2854
La-Ko-Land Bootmaker Sally VG-86
5-10 2x 365d 24450 4.1 1010
La-Ko-Land Monitor Nancy EX-90
10-11 3x 320d 19670 3.1 619
Life: 2381d 145490 3.0 4442



BUDJON JASPER ADELINE EX-92 EEEEE
DAM OF LOT 24



BUDJON STARDUST ANISA EX-96 3E
3RD DAM OF LOT 24

24

FIVE #1 EMBRYOS

- Worldwide Export Available

Holstein Plaza Contacts:

Steve Mower +1 240-520-5906
Jennifer Dingbaum +1 320-250-2412

Maple-Downs-I G W Atwood-ET

8956379C Very Good-87 *TV *TL *TY *TD
PTA +294M +51F +15P 99%R 4/14
PTA +219NM\$ +1.0PL 2.97CS -2.5DPR
PTA +4.66T +3.51UDC +3.74FLC 99%R
GTPI +1942G

Budjon Jasper Adeline-ET

140082045 Excellent-92 EEEEE @ 3-10
3-09 2x 160d 17060 3.4 583 2.8 478 inc.
2-01 2x 365d 38920 4.5 1742 3.1 1195

Braedale Goldwyn

CAN 10705608 GP-CAN EX'05 *TV *TL
PTA -9M +31F +13P 99%R 4/14
PTA +2.80T +2.45UDC +2.36FLC
GTPI +1879G

MD-Delight Durham Atlee-ET

131704103 Excellent-92 EEEEE DOM
3-11 2x 365d 38290 5.5 2091 3.1 1177
• All-American Senior 3-Year-Old 2005

Wilcoxview Jasper

128620869 *TL *TV *TL
PTA -574M +24F -18P 99%R 4/14
PTA +2.80T +1.93UDC +0.64FLC
GTPI +1374G

Budjon Stormatic Allison

133605811 Excellent-94 EEEEE @7-02
6-04 2x 365d 36070 3.6 1285 3.2 1162
Life: 1215d 104340 3.8 4002 3.2 3372

- 1st All-WI Best Three Females 2006
- Mem of Res All-WI Produce of Dam 2006
- Mem All-American Best 3 Females 2006

ANISA!

- HM All-American 125,000 lb Cow 2006
- Res Sr Champ, Midwest Spring Nat'l 2006
- Res All-American 125,000 lb Cow 2005
- Grand Champion, Midwest Fall Nat'l 2005
- HM All-American 125,000 lb Cow 2004
- All-WI 125,000 lb Cow 2004
- 1st 125,000 lb Cow, Midwest Spg Nat'l 2004
- Nom. All-American Aged Cow 2003

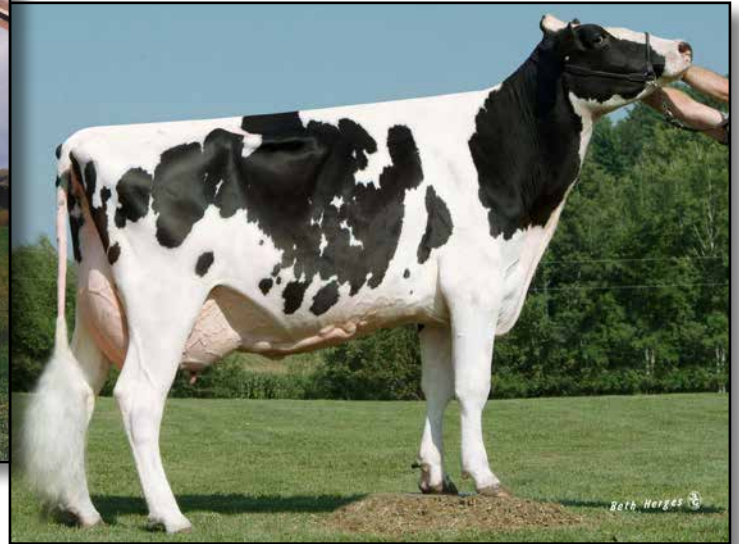
3rd thru 5th Dams

Budjon Stardust Anisa

EX-96 EEEEE 3E
9-06 2x 365d 47650 5.3 2520 3.2 1517
Life: 2332d 206490 4.7 9756 3.3 6809
Budjon Eagle Amara EX-91 EX-MS 2E
5-03 2x 365d 26160 3.9 1012 2.9 758
Life: 2139d 134610 4.0 5383 2.9 3948
Budjon Sexation Moole Ann EX-90 2E
6-09 2x 365d 26500 3.9 1012 3.1 808
Life: 3477d 229980 3.6 8392 2.9 6776



CASTLEHOLM PRONTO RYEA EX-90
DAM OF LOT 25



ASTRAHOE R LORENZO RACHEL EX-90
2ND DAM OF LOT 25

25

Holstein Plaza Contacts:

Steve Mower +1 240-520-5906
Jennifer Dingbaum +1 320-250-2412

Maple-Downs-I G W Atwood-ET

8956379C Very Good-87 *TV *TL *TY *TD
PTA +294M +51F +15P 99%R 4/14
PTA +219NM\$ +1.0PL 2.97CS -2.5DPR
PTA +4.66T +3.51UDC +3.74FLC 99%R
GTPI +1942G

Castleholm Pronto Ryea

66022257 Excellent-90 91-MS @ 5-00
2-08 2x 365d 30390 4.1 1258 3.5 1071
3-09 2x 305d 22340 4.4 976 3.8 844
• 15th generation EXCELLENT!

FIVE #1 EMBRYOS

• Worldwide Export Available

Braedale Goldwyn

CAN 10705608 GP-CAN EX'05 *TV *TL
PTA -9M +31F +13P 99%R 4/14
PTA +2.80T +2.45UDC +2.36FLC
GTPI +1879G

MD-Delight Durham Atlee-ET

131704103 Excellent-92 EEEEE DOM
3-11 2x 365d 38290 5.5 2091 3.1 1177
• All-American Senior 3-Year-Old 2005

Windy-Know-View Pronto

132815961 EX-95 *TR *TV *TL *TY *TD
PTA +731M +18F +13P 99%R 4/14
PTA +1.82T +1.11UDC +1.87FLC 4/14
GTPI +1776G

Astrahoe R Lorenzo Rachel

134779991 Excellent-90 EX-MS @ 3-10
3-09 2x 365d 42470 3.9 1670 3.3 1409
2-02 3x 305d 25600 4.1 1039 2.9 750

3rd thru 15th Dams

Astrahoe P Rosa Robyn EX-90 EX-MS
3-02 3x 365d 27860 3.4 935 2.9 815
Pinehurst Royal Rosa-ET EX-91 2E
3-10 3x 365d 41395 3.3 1358 2.8 1145
Life: 1212d 115400 3.5 4073 3.1 3593
Pinehurst Roulade EX-92 EEEEE 2E
5-00 3x 365d 35130 3.6 1271 3.2 1115
Life: 1761d 142070 3.8 5395 3.3 4705
Pinehurst Sweet Cleo EX-90 EEVEV
6-00 3x 365d 40380 4.4 1776 3.2 1305
Pinehurst Sweet Freedom EX-90 VEVE
5-07 3x 330d 34520 4.3 1500 3.1 1084
Pinehurst Sweet Delite EX-91 3E GMD
8-10 3x 365d 28460 4.2 1194 3.2 917
Life: 2228d 151600 4.0 6116 3.2 4907
Pinehurst Rapture EX-96 4E GMD
8-02 3x 365d 30370 4.2 1290 3.1 948
Life: 2297d 160790 3.9 6337 3.0 2469
Pinehurst Fragrance EX-90 2E
4-8 3x 365d 34490 3.6 1234
Hayssen Fond Ariel EX-90 2E
8-06 2x 328d 23330 3.2 753
Hayssen D V Audrey EX-90 2E
9-03 2x 365d 23670 4.4 1035
Whirlhill Q Rag Apple Ariel EX-92
6-02 2x 365d 26755 4.2 1134
Arlite Posch EX-92 GMD
5-03 2x 365d 21193 3.7 779
Audrey Posch EX-93 GMD
14-2 2x 365d 25572 3.7 948



CASTLEHOLM PRONTO RYEA EX-90
DAM OF LOT 26



ASTRAHOE R LORENZO RACHEL EX-90
2ND DAM OF LOT 26

26

Holstein Plaza Contacts:

Steve Mower +1 240-520-5906
Jennifer Dingbaum +1 320-250-2412

Gillette Windbrook

7816429C 91%RHA-NA *TV *TL *TY *TD
PTA +621M +41F +26P 97%R 4/14
PTA +260NM\$ +0.4PL 2.92SCS -1.9DPR
PTA +2.92T +2.14UDC +2.70FLC
GTPI +1850G

Castleholm Pronto Ryea

66022257 Excellent-90 91-MS @ 5-00
2-08 2x 365d 30390 4.1 1258 3.5 1071
3-09 2x 305d 22340 4.4 976 3.8 844
• 15th generation EXCELLENT!

FIVE #1 IVF FEMALE EMBRYOS

• Eligible for shipment in the U.S. and export to the EU and China

Gillette Brilea F B I-ET

89524C EX-94-CAN EXTRA'05 *TV *TL
PTA +1473M +39F +35P 99%R 4/14
PTA +1.85T +1.24UDC +1.51FLC
GTPI +1763G

Gillette Blitz 2nd Wind-ET

7352248C VG-88-CAN 34*
2-02 3x 365d 39096 3.6 1422 3.0 1182

Windy-Know-View Pronto

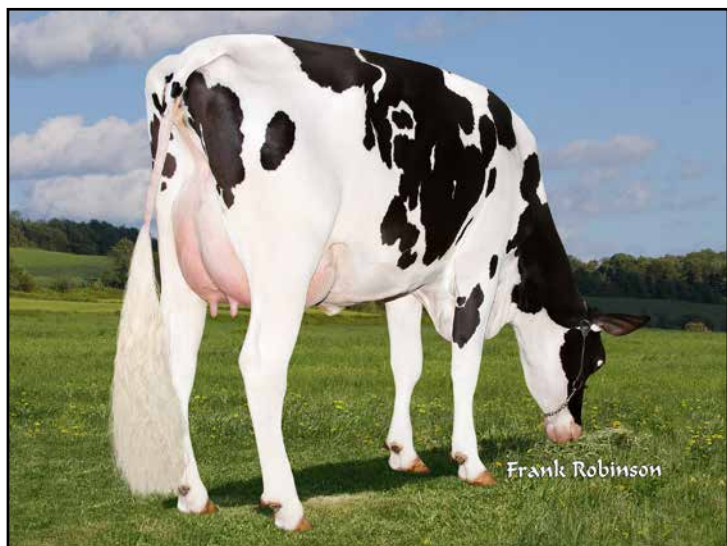
132815961 EX-95 *TR *TV *TL *TY *TD
PTA +731M +18F +13P 99%R 4/14
PTA +1.82T +1.11UDC +1.87FLC 4/14
GTPI +1776G

Astrahoe R Lorenzo Rachel

134779991 Excellent-90 EX-MS @ 3-10
3-09 2x 365d 42470 3.9 1670 3.3 1409
2-02 3x 305d 25600 4.1 1039 2.9 750

3rd thru 15th Dams

Astrahoe P Rosa Robyn EX-90 EX-MS
3-02 3x 365d 27860 3.4 935 2.9 815
Pinehurst Royal Rosa-ET EX-91 2E
3-10 3x 365d 41395 3.3 1358 2.8 1145
Life: 1212d 115400 3.5 4073 3.1 3593
Pinehurst Roulade EX-92 EEEEE 2E
5-00 3x 365d 35130 3.6 1271 3.2 1115
Life: 1761d 142070 3.8 5395 3.3 4705
Pinehurst Sweet Cleo EX-90 EEVEV
6-00 3x 365d 40380 4.4 1776 3.2 1305
Pinehurst Sweet Freedom EX-90 VEVE
5-07 3x 330d 34520 4.3 1500 3.1 1084
Pinehurst Sweet Delite EX-91 3E GMD
8-10 3x 365d 28460 4.2 1194 3.2 917
Life: 2228d 151600 4.0 6116 3.2 4907
Pinehurst Rapture EX-96 4E GMD
8-02 3x 365d 30370 4.2 1290 3.1 948
Life: 2297d 160790 3.9 6337 3.0 2469
Pinehurst Fragrance EX-90 2E
4-8 3x 365d 34490 3.6 1234
Hayssen Fond Ariel EX-90 2E
8-06 2x 328d 23330 3.2 753
Hayssen D V Audrey EX-90 2E
9-03 2x 365d 23670 4.4 1035
Whirlhill Q Rag Apple Ariel EX-92
6-02 2x 365d 26755 4.2 1134
Arlite Posch EX-92 GMD
5-03 2x 365d 21193 3.7 779
Audrey Posch EX-93 GMD
14-2 2x 365d 25572 3.7 948



FILIALE OMAN SPAGHETTI VG-85-2YR
DAM OF LOT 27



LESPERRON SHOTTLE SPLENDA EX-91-CAN 91-MS
2ND DAM OF LOT 27

27

SIX #1 EMBRYOS

• Worldwide Export Available

Holstein Plaza Contacts:

Steve Mower +1 240-520-5906

Jennifer Dingbaum +1 320-250-2412

Mr Chassity Colt 45-ET

70476906 *RC *PO *TV *TL *TY
PTA +1002M +16F +24P 78%R 4/14
PTA +396NM\$ +3.0PL 2.80SCS +0.2DPR
PTA +2.99T +2.88UDC +2.80FLC 77%R
GTPI +2020G

Filiale Oman Spaghetti

10654226 Very Good-85-2YR VG-MS
GTPI+2072 +546M +44F +34P +3.09T
GLPI+2751 / Conf. +12
1-11 2x 365d 26244 4.4 1142 3.5 919
• Spaghetti has 3 offspring over +2300G
• Dam of Filiale Spa at Androgenics

Sandy-Valley Colt P-Red-TW

68731810 *PO *TV *TL *TY *TD
PTA +439M -24F +21P 97%R 4/14
PTA +1.86T +2.17UDC +1.74FLC 92%R
GTPI +1859G

Regancrest S Chassity-ET

62496899 Excellent-92 EEEVE DOM
3-10 2x 365d 42280 4.3 1798 2.5 10700

Long-Langs Oman Oman-ET

135746776 VG-85 GM *TV *TL *TY
PTA +1102M +74F +69P 99%R 4/14
PTA +2.08T +1.78UDC +1.63FLC
GTPI +2185G

Lesperron Shottle Splenda

105523669C Excellent-91-CAN 91-MS 1*
5-09 2x 365d 43477 3.7 1605 3.2 1371
2-01 2x 365d 29072 3.9 1142 3.2 970
• 1 Superior Lactation

3rd thru 11th Dams

Maryclerc Morty Splendide

VG-86-2YR-CAN 15*
5-09 2x 365d 43477 3.7 1605 3.2 1371
Gen-I-Beq Lee Spendide EX-90 2E CAN 17*
7-03 2x 365d 45459 4.3 1953 3.3 1506

Glen Drummond Splendor

VG-86-2YR-CAN 36*
4-10 2x 314d 26510 4.2 1124 3.2 840

Glen Drummond Aero Flower

VG-88-CAN 18*
2-03 2x 326d 25622 4.0 1032 3.4 882

Glen Drummond Shower EX-CAN 13*

4-10 2x 365d 28583 4.8 1380 3.6 1016

Glen Drummond S C Jo Beth

EX-2E-CAN 7*
Life (6 Lacs): 141637 4.2 5994 3.2 3593

• Grand Champion Brant-Wentworth 1984

Glen Drummond Matt Beth VG-85 4*

11-10 2x 365d 25038 3.7 935

Life (5 Lacs): 105953 4.1 4295

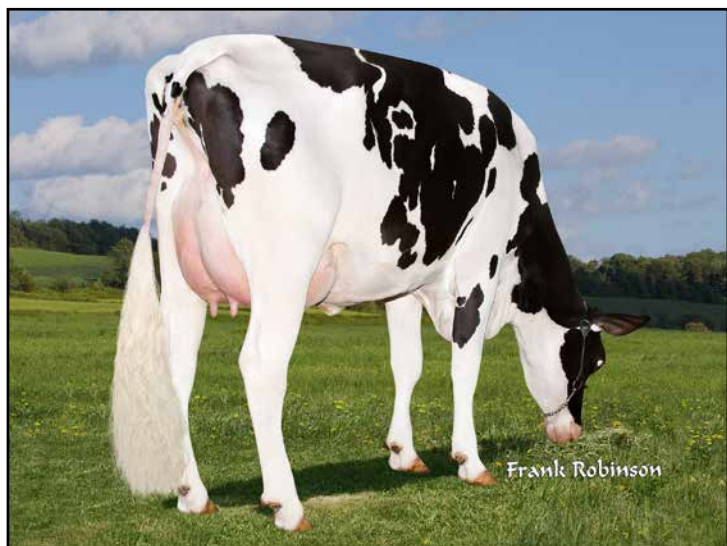
Glen Drummond Marquis Beth VG-CAN

Life (8 Lacs): 112688 4.2 4766

Ferglynn Rag Apple Bertha VG-CAN 3*

7-00 2x 365d 27796 4.7 1303

Life (9 Lacs): 208857 4.0 8344



FILIALE OMAN SPAGHETTI VG-85-2YR
DAM OF LOT 28



LESPERRON SHOTTLE SPLENDA EX-91-CAN 91-MS
2ND DAM OF LOT 28

28

SIX #1 EMBRYOS

• Worldwide Export Available

Holstein Plaza Contacts:

Steve Mower +1 240-520-5906

Jennifer Dingbaum +1 320-250-2412

De-Su Observer-ET

65917481 VG-88 *TR *TV *TL *TY *TD
PTA +1476M +50F +45P 99%R 4/14
PTA +6.2PL 2.84SCS -0.4DPR
PTA +2.70T +3.02UDC +0.41FLC
GTPI +2168G

Filiale Oman Spaghetti

10654226 Very Good-85-2YR VG-MS
GTPI+2072 +546M +44F +34P +3.09T
GLPI+2751 / Conf. +12
1-11 2x 365d 26244 4.4 1142 3.5 919
• Spaghetti has 3 offspring over +2300G
• Dam of Filiale Spa at Androgenics

Ensenada Taboo Planet-ET

60597003 *TY *TR
PTA +2105M +63F +62P 99%R 4/14
PTA +1.73T +1.27UDC -0.57FLC
GTPI +2073G

De-Su Oman 6121-ET

61681442 Very Good-86 GMD DOM
2-01 3x 365d 34770 4.3 1505 3.2 1108

Long-Langs Oman Oman-ET

135746776 VG-85 GM *TV *TL *TY
PTA +1102M +74F +69P 99%R 4/14
PTA +2.08T +1.78UDC +1.63FLC
GTPI +2185G

Lesperron Shottle Splenda

105523669C Excellent-91-CAN 91-MS 1*
5-09 2x 365d 43477 3.7 1605 3.2 1371
2-01 2x 365d 29072 3.9 1142 3.2 970
• 1 Superior Lactation

3rd thru 11th Dams

Maryclerc Morty Splendide

VG-86-2YR-CAN 15*
5-09 2x 365d 43477 3.7 1605 3.2 1371
Gen-I-Beq Lee Spendide EX-90 2E CAN 17*
7-03 2x 365d 45459 4.3 1953 3.3 1506

Glen Drummond Splendor

VG-86-2YR-CAN 36*
4-10 2x 314d 26510 4.2 1124 3.2 840

Glen Drummond Aero Flower

VG-88-CAN 18*
2-03 2x 326d 25622 4.0 1032 3.4 882

Glen Drummond Shower EX-CAN 13*

4-10 2x 365d 28583 4.8 1380 3.6 1016

Glen Drummond S C Jo Beth

EX-2E-CAN 7*
Life (6 Lacs): 141637 4.2 5994 3.2 3593

• Grand Champion Brant-Wentworth 1984

Glen Drummond Matt Beth VG-85 4*

11-10 2x 365d 25038 3.7 935

Life (5 Lacs): 105953 4.1 4295

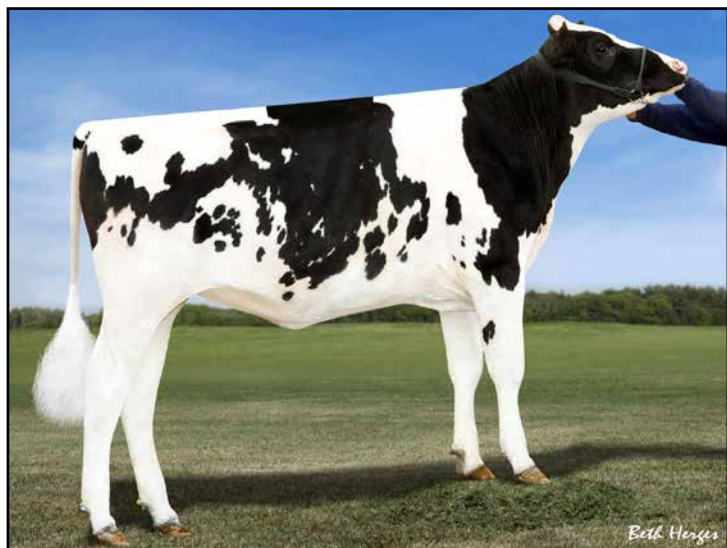
Glen Drummond Marquis Beth VG-CAN

Life (8 Lacs): 112688 4.2 4766

Ferglynn Rag Apple Bertha VG-CAN 3*

7-00 2x 365d 27796 4.7 1303

Life (9 Lacs): 208857 4.0 8344



SPEEK-NJ FER BING CROSBY
DAM OF LOT 29



LARCREST COMET-ETS VG-87 DOM
2ND DAM OF LOT 29

29

TWO #1 EMBRYOS

- *Worldwide Export Available*

Holstein Plaza Contacts:

Steve Mower +1 240-520-5906
Jennifer Dingbaum +1 320-250-2412

Woodcrest Mogul Yoder-ET

72254526 *TV *TL *TY *TD
PTA +1830M +106F +69P 73%R 4/14
PTA +924NM\$ +5.3PL 2.74SCS +0.7DPR
PTA +3.09T +2.60UDC +2.34FLC 73%R
GTPI +2554G / GLPI+3325 /gRZG+155

Speek-NJ Fer Bing Crosby-ET

71619109 Born: January 8, 2013
GTPI+2216 +1126M +92F +49P +2.53T

Maternal sister to Bing Crosby

Larcrest Credit-ET VG-85 DOM

GTPI+2221 +1927M +73F +56P +2.05T
2-06 2x 305d 30206 4.3 1357 3.4 1038 inc.

- *Sired by: Badger-Bluff Fanny Freddie*

Mountfield SSI Dcy Mogul

3006972816 *TV *TL *TY *TD
PTA +1377M +79F +49P 78%R 4/14
PTA +2.81T +2.99UDC +2.78FLC 77%R
GTPI+2394G

Woodcrest Planet Yakara

3008363689 Very Good-85
2-00 3x 305d 27530 3.6 1004 3.3 906

Cabon Fernand

FRA 2941261203 *TV *TL *TY
PTA +1301M +94F +57P 76%R 4/14
PTA +2.12T +1.90UDC +1.82FLC 75%R
GTPI +2230G

Larcrest Comet-ETS

53766363 Very Good-87 DOM @ 3-01
GTPI+2076 +1441M +93F +51P +2.20T
2-02 2x 305d 28190 4.3 1205 3.3 921
• *10 daughters over +2300G*
• *Full sister to Larcrest Cancun at ABS*
• *Full sister to O-Cosmopolitan*

3rd thru 6th Dams

Larcrest Cosmopolitan VG-87 DOM

2-04 2x 365d 30930 4.1 1261 3.6 1119

Larcrest Oside Champagne-TW

EX-90 GMD DOM

2-03 2x 365d 29110 4.5 1322 3.7 1077

- *17 sons in A.I. worldwide*

Larcrest Juror Chanel EX-93 3E GMD DOM

9-00 2x 365d 48460 4.0 1943 3.4 1648

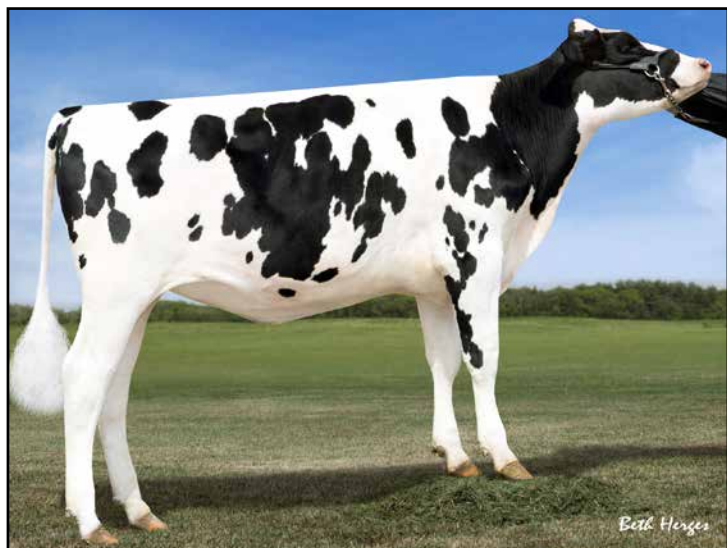
Life: 2899d 245420 4.3 10482 3.6 8866

Larcrest Lindy Chandra VG-85

2-05 2x 365d 20896 4.8 993 3.8 803

Larcrest Inspiration Carly VG-87

3-05 2x 305d 21800 4.5 973 3.3 802



SPEEK-NJ CHOCOLATE CHIP-ET
DAM OF LOT 30



LARCREST CREDIT-ET VG-85-2YR DOM
2ND DAM OF LOT 30

30

TWO #1 EMBRYOS

- Worldwide Export Available

Holstein Plaza Contacts:

Steve Mower +1 240-520-5906

Jennifer Dingbaum +1 320-250-2412

Woodcrest Mogul Yoder-ET

72254526 *TV *TL *TY *TD

PTA +1830M +106F +69P 73%R 4/14

PTA +924NM\$ +5.3PL 2.74SCS +0.7DPR

PTA +3.09T +2.60UDC +2.34FLC 73%R

GTPI +2554G / GLPI+3325 /gRZG+155

Speek-NJ Chocolate Chip-ET

71619118

Born: January 10, 2013

GTPI+2210 +1756M +76F +56P +1.54T

Maternal sisters to Chocolate Chip

Speek-NJ Predest Crumpet-ET

GTPI+2554 +1004NM\$ +2.59T

Speek-NJ-I Supersire Calypso

GTPI+2448 +880NM\$ 2.37T

Speek-NJ Predest Cutie-ET

GTPI+2422 +867NM\$ +2.46T

Mountfield SSI Dcy Mogul

3006972816 *TV *TL *TY *TD

PTA +1377M +79F +49P 78%R 4/14

PTA +2.81T +2.99UDC +2.78FLC 77%R

GTPI+2394G

Woodcrest Planet Yakara

3008363689 Very Good-85

2-00 3x 305d 27530 3.6 1004 3.3 906

Cabon Fernand

FRA 2941261203 *TV *TL *TY

PTA +1301M +94F +57P 76%R 4/14

PTA +2.12T +1.90UDC +1.82FLC 75%R

GTPI +2230G

Larcrest Credit-ET

56265392 Very Good-85 @ 2-11 DOM

GTPI+2221 +1927M +73F +56P +2.05T

2-06 2x 305d 30206 4.3 1357 3.4 1038 inc.

- sired by: Badger-Bluff Fanny Freddie

3rd thru 8th Dams

Larcrest Comet-ETS VG-87 DOM

2-02 2x 305d 28190 4.3 1205 3.3 921

- Full sister to Larcrest Cancun at ABS

- Full sister to O-Cosmopolitan

Larcrest Cosmopolitan VG-87 DOM

2-04 2x 365d 30930 4.1 1261 3.6 1119

Larcrest Oside Champagne-TW

EX-90 GMD DOM

2-03 2x 365d 29110 4.5 1322 3.7 1077

- 17 sons in A.I. worldwide

Larcrest Juror Chanel EX-93 3E GMD DOM

9-00 2x 365d 48460 4.0 1943 3.4 1648

Life: 2899d 245420 4.3 10482 3.6 8866

Larcrest Lindy Chandra VG-85

2-05 2x 365d 20896 4.8 993 3.8 803

Larcrest Inspiration Carly VG-87

3-05 2x 305d 21800 4.5 973 3.3 802



EDG DOMINIQUE 2173-ET
DAM OF LOT 31



LADYS-MANOR ALLANAS DORA EX-93 DOM
3RD DAM OF LOT 31

31

SIX #1 EMBRYOS

• Worldwide Export Available

Holstein Plaza Contacts:

Steve Mower +1 240-520-5906

Jennifer Dingbaum +1 320-250-2412

SEXED
semen

Butz-Hill Megasire-ET (SEXED)

71088720 *TV *TL *TY *TD

PTA +1316M +86F +61P 73%R 4/14

PTA +5.4PL 2.70SCS +1.7DPR

PTA +2.91T +2.77UDC +2.73FLC 72%R

GTPI +2537G / DGV-GLPI +3387

EDG Dominique 2173-ET

72437720 Born: April 13, 2013

GTPI+2255 +1232M +68F +36P +3.37T

DGV-GLPI +3102 Conf.+14

Seagull-Bay Supersire-ET

69981349 *TV *TL *TY *TD

PTA +2434M +111F +78P 76%R 4/14

PTA +2.40T +1.71UDC +1.28FLC 76%R

GTPI +2420G

Morsan Man D Missy-ET

69320673 Very Good-85

2-04 2x 305d 20450 5.5 1124 3.7 760

S-S-I Domain Lithium-ET

3004672704 *TR *TV *TL *TY *TD

PTA +1182M +38F +39P 76%R 4/14

PTA +1.99T +5.8PL 2.75SCS +1.7DPR

GTPI +2148G

Ladys-Manor Dominique-ET

70189445

GTPI+2134 +3.55T +3.12UDC +2.09FLC

3rd thru 13th Dams

Ladys-Manor Allanas Dora EX-93 DOM

3-07 2x 365d 40640 4.4 1780 3.3 1360

Ms Durchan Lady Allana EX-95 2E EEEEE

3-07 2x 365d 40850 4.4 1793 3.3 1349

Life: 1351d 126420 4.2 5362 3.4 4305

• All-American Sr. Milking Yrlg 2007

• 1st Sr. Milking Yrlg World Dairy Expo 2007

• 1st Sr. Milking Yrlg Eastern Fall Nat 2007

Coldsprings Dur Chan 109 EX-95 2E DOM

6-04 2x 365d 41850 4.3 1784 3.3 1371

Life: 1423d 130510 3.6 4695 3.3 5064

• Res All-American Aged Cow 2007

• HM All-American 5-Year-Old 2005

• All-American 4-Year-Old 2004

C Bermaska Starbuck Chancel VG-89 DOM

2-07 2x 365d 28400 4.3 1230 3.5 999

• All-American Senior 2-Year-Old 1992

• All-American Senior Yearling Heifer 1991

Donaco Enhancer Cheryl VG-87-CAN

7-02 2x 305d 21462 4.8 1021 3.5 743

Danaco Apache Chanda VG-86

4-11 2x 322d 19160 4.3 829 3.5 670

Danaco Elevation Candace VG-86

Life: 2564d 185599 3.7 6834

Davis-Farm Maple Cindy EX-90 GMD

5-03 2x 365d 23849 3.7 871

Davis-Farm Heritage Candace EX-90 EEEV

2-06 2x 305d 12060 3.7 445

Davis-Farm Model Lena VG-85

4-02 2x 305d 14060 4.1 582

Maview Candace Pilot EX-91 VEEE

Life: 3139d 151504 3.9 5825



ASTRAHOE STORMATIC RADIANT EX-91 2E GMD
3RD DAM OF LOT 32

32

Holstein Plaza Contacts:

Steve Mower +1 240-520-5906
Jennifer Dingbaum +1 320-250-2412

Gillette Windbrook

7816429C 91%RHA-NA *TV *TL *TY *TD
PTA +621M +41F +26P 97%R 4/14
PTA +260NM\$ +0.4PL 2.92SCS -1.9DPR
PTA +2.92T +2.14UDC +2.70FLC
GTPI +1850G

Crisdhome Braxton Alcatraz

71226063 Born: September 7, 2012
• Will be pictured this spring!

FIVE #1 EMBRYOS

• *Worldwide Shipment Available*

Gillette Brilea F B I-ET

89524C EX-94-CAN EXTRA'05 *TV *TL
PTA +1473M +39F +35P 99%R 4/14
PTA +1.85T +1.24UDC +1.51FLC
GTPI +1763G

Gillette Blitz 2nd Wind-ET

7352248C VG-88-CAN 34*
2-02 3x 365d 39096 3.6 1422 3.0 1182

Regancrest S Braxton

61898423 EX-95 *TR *TV *TL *TY *TD
PTA +1556M +13F +19P 99%R 4/14
PTA +3.70T +1.97UDC +2.30FLC 98%R
GTPI +1521G

Castleholm Rdiant Alisha-ET

69835864 Excellent-90 EX-MS @ 3-11
2-02 2x 365d 26430 3.9 1027 3.2 849
sired by: Maple-Downs-I G W Atwood

3rd thru 16th Dam

Astrahoe Stormatic Radiant

EX-91 2E GMD
5-02 3x 365d 49840 4.2 2087
Astrahoe LJ Rosa Rebel EX-92 2E
7-05 2x 365d 48580 4.2 2021 3.0 1468
Pinehurst Royal Rosa-ET EX-91 2E
3-10 3x 365d 41395 3.3 1358 2.8 1145
Life: 1212d 115400 3.5 4073 3.1 3593
Pinehurst Roulade EX-92 EEEEE 2E
5-00 3x 365d 35130 3.6 1271 3.2 1115
Life: 1761d 142070 3.8 5395 3.3 4705
Pinehurst Sweet Cleo EX-90 EEVEV
6-00 3x 365d 40380 4.4 1776 3.2 1305
Pinehurst Sweet Freedom EX-90 VEVE
5-07 3x 330d 34520 4.3 1500 3.1 1084
Pinehurst Sweet Delite EX-91 3E GMD
8-10 3x 365d 28460 4.2 1194 3.2 917
Life: 2228d 151600 4.0 6116 3.2 4907
Pinehurst Rapture EX-96 4E GMD
8-02 3x 365d 30370 4.2 1290 3.1 948
Life: 2297d 160790 3.9 6337 3.0 2469
Pinehurst Fragrance EX-90 2E
4-8 3x 365d 34490 3.6 1234
Hayssen Fond Ariel EX-90 2E
8-06 2x 328d 23330 3.2 753
Hayssen D V Audrey EX-90 2E
9-03 2x 365d 23670 4.4 1035
Whirlhill Q Rag Apple Ariel EX-92
6-02 2x 365d 26755 4.2 1134
Arlite Posch EX-92 GMD
5-03 2x 365d 21193 3.7 779
Audrey Posch EX-93 GMD
14-2 2x 365d 25572 3.7 948



GBM SHOTTLE JOSETTA EX-92 EX-MS
DAM OF LOT 33

33

FIVE #1 EMBRYOS

- Worldwide Export Available

Holstein Plaza Contacts:

Steve Mower +1 240-520-5906

Jennifer Dingbaum +1 320-250-2412

Mr Apples Armani *RC

68571374 *TV *TL *TY *TD

PTA -640M +61F +18P 78%R 4/14

PTA +498NM\$ +2.8PL 2.86SCS +1.2DPR

PTA +3.37T +3.07UDC +3.18FLC 78%R

GTPI +2147G

GBM Shottle Josetta-ET

140324453 Excellent-92 EEVEE

3-07 2x 365d 30840 3.1 949 3.2 1001

2-06 2x 357d 25480 3.6 915 3.2 849

Braedale Goldwyn

CAN 10705608 GP-CAN EX'05 *TV *TL

PTA -9M +31F +13P 99%R 4/14

PTA +2.80T +2.45UDC +2.36FLC

GTPI +1879G

KHW Regiment Apple-Red-ET

135511521 Excellent-96 3E DOM

4-01 2x 365d 35750 4.7 1682 3.7 1314

- Grand Champion, Grand Int'l Re&W Show

Picston Shottle-ET

GBR 598172 EX-95 GM 12/11 *TV *TL *TY

PTA +885M +45F +24P 99%R 4/14

PTA +2.29T +1.84UDC +1.58FLC

GTPI +1929G

GBM Durham Bstar Josie-ET

132566027 Excellent-93 EX-MS 2E *CV

5-08 2x 365d 34750 4.2 1447 3.1 1060

8-01 2x 365d 31570 4.5 1412 3.2 1015

Life: 2690d 185910 4.1 7705 3.4 6314

3rd thru 6th Dams

GBM Val Blackstar Jean-ET EX-94 3E GMD

8-05 2x 365d 37180 3.9 1458 3.0 1119

Life: 3127d 238190 4.1 9734 3.4 8000

GBM Valiant Janice EX-92 2E DOM

5-09 2x 365d 30860 3.5 1080 3.1 948

Life: 2100d 126200 3.5 4437 3.2 3996

Sylvan-Dell M C Janice EX-91 2E DOM

6-03 2x 314d 29600 3.9 1152

Sylvan-Dell Atlas Jill EX-90 2E

4-06 2x 305d 20820 3.5 717



PFAFFS CORNET-ET
DAM OF LOT 34



MARKWELL BOLTON CARSYN-ET EX-90 EX-MS
2ND DAM OF LOT 34

34

SIX #1 EMBRYOS

• Worldwide Export Available

Holstein Plaza Contacts:

Steve Mower +1 240-520-5906
Jennifer Dingbaum +1 320-250-2412

View-Home Monterey

69087180
PTA +1571M +83F +65P 74%R 4/14
PTA +5.8PL 2.90SCS +0.7DPR
PTA +3.74T +3.60UDC +2.33FLC 74%R
GTPI +2578 | GLPI +3415

Pfaffs Cornet-ET

142265664 Born: January 30, 2013
GTPI+2238 +2026M +71F +65P +3.02T

De-Su Bkm McCutchen 1174-ET

69990138 *TV *TL *TY *TD
PTA +1277M +66F +51P 78%R 4/14
PTA +3.72T +3.36UDC +2.57FLC 78%R
GTPI +2384G

Pine-Tree 2149Robst 4846

69804610 Very Good-86 VG-MS @ 3-01

Amighetti Numero Uno-ET

ITA 17990915143 *TV *TL *TY
PTA +740M +80F +37P 78%R 4/14
PTA +2.93T +2.82UDC +1.96FLC 77%R
GTPI +2423G

Markwell Bolton Carsyn-ET *TY

65724153 Excellent-90 EX-MS @ 4-07
4-05 2x 365d 37510 5.1 1898 3.6 1344
2-01 2x 365d 31750 4.3 1360 3.5 1117

3rd thru 7th Dams

Ralma 14-Carat Gold-ET

EX-90 GMD DOM
2-04 2x 365d 30002 4.6 1391 3.6 1069

Ralma Christmas Cookie-ET

VG-89 EX-MS DOM
2-06 2x 365d 28710 4.5 1297 3.4 967

Ralma Christmas Fudge-ET

VG-88 GMD DOM
2-03 2x 365d 31810 4.1 1292 3.2 1027

Ralma Juror Faith EX-91 GMD DOM

4-02 2x 365d 47860 4.5 2165 3.1 1497
Life: 1352d 133520 4.5 5986 3.3 4358

Ralma Leadman Fashion VG-89

4-10 2x 365d 40710 3.7 1494 3.0 1232
Life: 1243d 117710 3.6 4295 3.2 3743



ASTRAHOE STORMATIC RADIANT EX-91 2E GMD
2ND DAM OF LOT 35

35

Holstein Plaza Contacts:

Steve Mower +1 240-520-5906

Jennifer Dingbaum +1 320-250-2412



De-Su Bkm McCutchen 1174-ET

69990138 *TV *TL *TY *TD

PTA +1277M +66F +51P 78%R 4/14

PTA +655NM\$ +3.6PL 2.81SCS +0.4DPR

PTA +3.72T +3.36UDC +2.57FLC 78%R

GTPI +2384G

Castleholm Radiants Apple

69835859 Good Plus-83

TWO #1 EMBRYOS

• Worldwide Export Available

De-Su 521 Bookem-ET

66636657 *TR *TV *TL *TY *TD

PTA +1585M +49F +61P 99%R 4/14

PTA +2.62T +2.14UDC +1.64FLC 97%R

GTPI +2279G

Sully Shottle May-TW

138218285 Excellent-90 EEEEE DOM

5-04 2x 365d 38970 3.5 1354 3.1 1226

Maple-Downs-I G W Atwood-ET

8956379C Very Good-87 *TV *TL *TY *TD

PTA +294M +51F +15P 99%R 4/14

PTA +4.66T +3.51UDC +3.74FLC 99%R

GTPI +1942G

Astrahoe Stormatic Radiant

134908690 Excellent-91 2E GMD

5-02 3x 365d 49840 4.2 2087

2-03 3x 305d 36440 3.9 1416 3.1 1133

3-05 3x 365d 36260 3.7 1356 3.6 1313

3rd thru 15th Dams

Astrahoe LJ Rosa Rebel EX-92 2E

7-05 2x 365d 48580 4.2 2021 3.0 1468

Pinehurst Royal Rosa-ET EX-91 2E

3-10 3x 365d 41395 3.3 1358 2.8 1145

Life: 1212d 115400 3.5 4073 3.1 3593

Pinehurst Roulade EX-92 EEEEE 2E

5-00 3x 365d 35130 3.6 1271 3.2 1115

Life: 1761d 142070 3.8 5395 3.3 4705

Pinehurst Sweet Cleo EX-90 EEEVEV

6-00 3x 365d 40380 4.4 1776 3.2 1305

Pinehurst Sweet Freedom EX-90 VEVE

5-07 3x 330d 34520 4.3 1500 3.1 1084

Pinehurst Sweet Delite EX-91 3E GMD

8-10 3x 365d 28460 4.2 1194 3.2 917

Life: 2228d 151600 4.0 6116 3.2 4907

Pinehurst Rapture EX-96 4E GMD

8-02 3x 365d 30370 4.2 1290 3.1 948

Life: 2297d 160790 3.9 6337 3.0 2469

Pinehurst Fragrance EX-90 2E

4-8 3x 365d 34490 3.6 1234

Hayssen Fond Ariel EX-90 2E

8-06 2x 328d 23330 3.2 753

Hayssen D V Audrey EX-90 2E

9-03 2x 365d 23670 4.4 1035

Whirlhill Q Rag Apple Ariel EX-92

6-02 2x 365d 26755 4.2 1134

Arlite Posch EX-92 GMD

5-03 2x 365d 21193 3.7 779

Audrey Posch EX-93 GMD

14-2 2x 365d 25572 3.7 948



CASTLEHOLM RAE-READY-RED-ET GP-83
DAM OF LOT 36



ASTRAHOE RM ROSA RAE-LYN EX-90
2ND DAM OF LOT 36

36

FIVE #1 EMBRYOS

• Worldwide Export Available

Holstein Plaza Contacts:

Steve Mower +1 240-520-5906

Jennifer Dingbaum +1 320-250-2412

Hylite Barbwire-Red

9748330 *TY *TV *TL *TD

PTA -151M +18F +3P 80%R 4/14

PTA -0.1PL 2.88SCS -.3DPR

PTA +2.84T +2.07UDC +1.91FLC 76%R

GTPI +1662G

Castleholm Rae-Ready-Red-ET

68889488 Good Plus-83

2-04 2x 305d 20010 3.9 777 3.0 600

• Potential 14th Generation Excellent

Full sister to Ready-Red

Castleholm Real Rae-Red VG-85

Dam of:

Our-Destiny BW Roxan-Red

• 1st Winter Calf, MN State Fair R&W 2013

• 7th Winter Calf, World Dairy Expo 2013

Deslacs Shaquille *RC

103512991C *TY

PTA +87M -3F +7P 99%R 4/14

PTA +1.96T +1.64UDC +2.03FLC

GTPI +1534G

Rainyridge Talent Barbara RC

7543170 EX-95 EEEEE 3-04 2x 365d

34465 3.6 1257 3.1 1068

Hurtgen-Vue Reality-Red

134690997

PTA -270M +66F +10P 99%R 4/14

PTA +2.38T +1.79UDC +2.71FLC

GTPI +1984G

Astrahoe Rm Rosa Rae-Lyn-ET

130894399 Excellent-90 EEEVV

3-09 2x 365d 51214 3.8 1948 2.9 1498

4-11 2x 365d 59210 4.1 2446 2.8 1659

Life: 897d 121036 4.0 4830 2.9 3522

3rd thru 14th Dams

Pinehurst Royal Rosa-ET EX-91 2E

3-10 3x 365d 41395 3.3 1358 2.8 1145

Life: 1212d 115400 3.5 4073 3.1 3593

Pinehurst Roulade EX-92 EEEEE 2E

5-00 3x 365d 35130 3.6 1271 3.2 1115

Life: 1761d 142070 3.8 5395 3.3 4705

Pinehurst Sweet Cleo EX-90 EEEVV

6-00 3x 365d 40380 4.4 1776 3.2 1305

Pinehurst Sweet Freedom EX-90 VEVE

5-07 3x 330d 34520 4.3 1500 3.1 1084

Pinehurst Sweet Delite EX-91 3E GMD

8-10 3x 365d 28460 4.2 1194 3.2 917

Life: 2228d 151600 4.0 6116 3.2 4907

Pinehurst Rapture EX-96 4E GMD

8-02 3x 365d 30370 4.2 1290 3.1 948

Life: 2297d 160790 3.9 6337 3.0 2469

Pinehurst Fragrance EX-90 2E

4-8 3x 365d 34490 3.6 1234

Hayssen Fond Ariel EX-90 2E

8-06 2x 328d 23330 3.2 753

Hayssen D V Audrey EX-90 2E

9-03 2x 365d 23670 4.4 1035

Whirlhill Q Rag Apple Ariel EX-92

6-02 2x 365d 26755 4.2 1134

Arlite Posch EX-92 GMD

5-03 2x 365d 21193 3.7 779

Audrey Posch EX-93 GMD

14-2 2x 365d 25572 3.7 948



CASTLEHOLM RAE-READY-RED-ET GP-83
DAM OF LOT 37



ASTRAHOE RM ROSA RAE-LYN EX-90
2ND DAM OF LOT 37



FIVE #1 EMBRYOS

• Worldwide Export Available

Holstein Plaza Contacts:

Steve Mower +1 240-520-5906

Jennifer Dingbaum +1 320-250-2412

Mr Ansly Addiction-P-Red-ET

72128091 *TV

PTA -457M +36F +21P 73%R 4/14

PTA +629NM\$ +5.3PL 2.55SCS +1.9DPR

PTA +3.36T +3.77UDC +1.86FLC 72%R

GTPI +2255G

Castleholm Rae-Ready-Red-ET

68889488 Good Plus-83

2-04 2x 305d 20010 3.9 777 3.0 600

• Potential 14th Generation Excellent

Full sister to Ready-Red

Castleholm Real Rae-Red VG-85

Dam of:

Our-Destiny BW Roxan-Red

• 1st Winter Calf, MN State Fair R&W 2013

• 7th Winter Calf, World Dairy Expo 2013

Tiger-Lily Ladd P-Red-ET

69405976 *B/R *TV *TL *TY

PTA -48M +30F +29P 76%R 4/14

PTA +3.20T +2.80UDC +2.23FLC

GTPI +2170G

Ms Apples Ainsley-ET *RC

69822262 Very Good-86 VG-MS @ 2-09

2-04 2x 180d 14680 4.5 667 3.2 470 inc.

Hurtgen-Vue Reality-Red

134690997

PTA -270M +66F +10P 99%R 4/14

PTA +2.38T +1.79UDC +2.71FLC

GTPI +1984G

Astrahoe Rm Rosa Rae-Lyn-ET

130894399 Excellent-90 EEEVV

3-09 2x 365d 51214 3.8 1948 2.9 1498

4-11 2x 365d 59210 4.1 2446 2.8 1659

Life: 897d 121036 4.0 4830 2.9 3522

3rd thru 14th Dams

Pinehurst Royal Rosa-ET EX-91 2E

3-10 3x 365d 41395 3.3 1358 2.8 1145

Life: 1212d 115400 3.5 4073 3.1 3593

Pinehurst Roulade EX-92 EEEEE 2E

5-00 3x 365d 35130 3.6 1271 3.2 1115

Life: 1761d 142070 3.8 5395 3.3 4705

Pinehurst Sweet Cleo EX-90 EEVEV

6-00 3x 365d 40380 4.4 1776 3.2 1305

Pinehurst Sweet Freedom EX-90 VEVE

5-07 3x 330d 34520 4.3 1500 3.1 1084

Pinehurst Sweet Delite EX-91 3E GMD

8-10 3x 365d 28460 4.2 1194 3.2 917

Life: 2228d 151600 4.0 6116 3.2 4907

Pinehurst Rapture EX-96 4E GMD

8-02 3x 365d 30370 4.2 1290 3.1 948

Life: 2297d 160790 3.9 6337 3.0 2469

Pinehurst Fragrance EX-90 2E

4-8 3x 365d 34490 3.6 1234

Hayssen Fond Ariel EX-90 2E

8-06 2x 328d 23330 3.2 753

Hayssen D V Audrey EX-90 2E

9-03 2x 365d 23670 4.4 1035

Whirlhill Q Rag Apple Ariel EX-92

6-02 2x 365d 26755 4.2 1134

Arlite Posch EX-92 GMD

5-03 2x 365d 21193 3.7 779

Audrey Posch EX-93 GMD

14-2 2x 365d 25572 3.7 948



**MILKSOURCE SHOCK AFFAIR VG-87 VG-MS
DAM OF LOT 38**



**AMLAIIRD LEE ALICE EX-94 2E
2ND DAM OF LOT 38**

38

FOUR #1 EMBRYOS

• Worldwide Export Available

Holstein Plaza Contacts:

Steve Mower +1 240-520-5906

Jennifer Dingbaum +1 320-250-2412

Sonnek GC Corvette-ET

71391400 *TV *TL *TY *TD
PTA +450M +29F +20P 76%R 4/14
PTA +1.1PL 2.64SCS -0.4DPR
PTA +4.17T +3.15UDC +4.03FLC 76%R
GTPI +2085G

Milksource Shock Affair-ET

69954137 Very Good-87-2YR VG-MS
• Res Junior Champion, GA National Fair 2012
• From 3 Generations of EX-94 2E cows

Mr Chassity Gold Chip-ET

140145553 100%RHA-NA *TR *TV *TL
PTA +211M +23F +0P 94%R 4/14
PTA +3.70T +3.31UDC +3.16FLC 89%R
GTPI +1996G

Sonnek Damion Charlie-ET

138545776 Excellent-94 EEEEE
3-04 2x 365d 26240 4.0 1050 3.5 992

Ms Atlees Sht Aftershock

65249839 *TV *TL *TY *TD
PTA +472M +23F +1P 99%R 4/14
PTA +3.12T +2.58UDC +2.05FLC 99%R
GTPI +1768G

Amlaird Lee Alice-ET

7293258C Excellent-94 EEEEE 2E
7-05 2x 365d 36980 50 1837 3.2 1186
4-02 2x 365d 31530 4.8 1500 3.2 1008
Life: 2059d 129610 4.8 6177 3.3 4334
• All-American Junior 2-Year-Old 2003

3rd thru 4th Dams

Ms Kingstead Chief Adeen-ET

EX-94 2E DOM
3-05 2x 310d 30180 4.0 1209 3.4 1020
Life: 1382d 100760 4.0 4010 3.4 3458

• 2x Member All-American Produce

• Nom All-American Jr 3-Yr Old

• Nom All-American 4-Yr Old

• Dam of 16 VG and 11 EX Offspring

C Aitkenbrae Starbuck Ada EX-94 2E DOM

13-8 2x 365d 25150 3.0 764 3.2 796

• All-American Produce of Dam 2000

• 1st Eastern Nat'l 3-Yr Old & Grand Ch 1990



TRAMILDA OBSERVER LYNN VG-85 87-MS
2ND DAM OF LOT 39



TRAMILDA SOCRATES LIL LYNN VG-87 VG-MS
3RD DAM OF LOT 39

39

FIVE #1 EMBRYOS

• Worldwide Export Available

Holstein Plaza Contacts:

Steve Mower +1 240-520-5906

Jennifer Dingbaum +1 320-250-2412

RockyMountain Lottomax

11445882C *TR *TV *TL *TY *TD

PTA +1553M +91F +75P 74%R 4/14

PTA +7.8PL 2.62SCS +1.9DPR

PTA +3.53T +2.91UDC +2.16FLC 73%R

GTPI +2565G

T-Gen-Ac Mogul Lyanna-ET

72127284

Born: October 2, 2012

GTPI+2356 +729M +61F +30P +2.64T

Amighetti Numero Uno-ET

ITA 17990915143 *TV *TL *TY

PTA +740M +80F +37P 78%R 4/14

PTA +2.93T +2.82UDC +1.96FLC 77%R

GTPI +2423G

Rockymountain Super Leita

10945258C Very Good-85-2YR 86-MS

2-00 3x 365d 25613 4.0 1032 3.1 791

Mountfield SSI Dcy Mogul

3006972816 *TV *TL *TY *TD

PTA +1377M +79F +49P 78%R 4/14

PTA +2.81T +2.99UDC +2.78FLC 77%R

GTPI+2394G

Tramilda Observer Lynn

141057743 Very Good-85 87-MS @ 3-01

GTPI+2140 +1020M +41F +22P +2.68T

2-02 2x 183d 12580 6.1 773 2.9 371 inc.

• Outcross Maternal Line Sire Stack -
NO Shottle, Goldwyn, Bolton or Durham!

3rd thru 11th Dams

Tramilda Socrates Lil Lynn

VG-87-3YR VG-MS

1-11 2x 305d 18490 4.0 733 3.0 546

Tramilda Lou Amy Joy-ET VG-85 VG-MS

1-11 2x 365d 23570 3.6 842 3.0 697

Diamond-Oak Amy Lynn-ET

VG-86 VG-MS

2-04 2x 361d 23430 4.2 992 3.2 760

Askew Rudolph Amanda-ET

VG-86 GMD DOM

3-07 2x 365d 38400 3.9 1507 3.2 1247

Diamond-Oak Afton-ET

VG-85 GMD DOM

2-08 2x 305d 32590 4.5 1465 3.8 1252

Diamond-Oak Angel-ET

VG-86 GMD DOM

2-11 2x 305d 25740 4.2 1085 3.1 798

Fisher-Place M Amanda-ET

EX-94 3E GMD DOM

7-00 2x 365d 37640 4.0 1498 3.2 1218

Wapa Bootmaker Mandy

EX-96 3E GMD DOM

7-03 2x 305d 3030 3.7 1217

• All-American 2-Year-Old 1975

Wapa Fury Bell EX-91 2E EX-MS

7-02 2x 305d 21130 4.0 961



BENNER FORK JANARDAN VG-87 VG-MS @ 2-10
2ND DAM OF LOT 40



BENNER PLANET JAKOVA GP-83-2YR-CAN
3RD DAM OF LOT 40

40

FOUR #1 EMBRYOS

• Worldwide Export Available

Holstein Plaza Contacts:

Steve Mower +1 240-520-5906

Jennifer Dingbaum +1 320-250-2412

Morningview Mcc Kingboy-ET

72044077 *TV *TL *TY *TD

PTA +1927M +72F +63P 74%R 4/14

PTA +846NM\$ +6.1PL 2.74SCS +1.8DPR

PTA +3.92T +3.09UDC +2.85FLC 74%R

GTPI +2602G

T-T-Gen-Ac Mogul Janalyn-ET

72265761

Born: November 19, 201

GTPI+2308 +1406M +88F +60P +3.05T

De-Su Bkm McCutchen 1174-ET

69990138 *TV *TL *TY *TD

PTA +1277M +66F +51P 78%R 4/14

PTA +3.72T +3.36UDC +2.57FLC 78%R

GTPI +2384G

Morningview Super Megan

68654508 Very Good-85 VG-MS

2-01 3x 280d 22539 3.7 823 3.1 695 inc.

Mountfield SSI Dcy Mogul

3006972816 *TV *TL *TY *TD

PTA +1377M +79F +49P 78%R 4/14

PTA +2.81T +2.99UDC +2.78FLC 77%R

GTPI+2394G

Benner Fork Janardan-ET

11271465C Very Good-87 VG-MS @ 2-10

GTPI+2220 +1477M +86F +54P +2.89T

3rd thru 10th Dams

Benner Planet Jakova GP-83-2YR-CAN

2-00 2x 365d 33468 5.5 1841 3.7 1248

• 1 Superior Lactation

Benner Goldwyn Jamarco VG-87-CAN 4*

2-02 2x 365d 35075 4.7 1651 3.5 1226

• 1 Superior Lactation

Benner Outside Joyce VG-85-2YR-CAN 10*

2-08 2x 365d 35547 4.1 1446 3.4 1195

• 9 VG daughters

• Sons at Semex, Genervations & Alta

Benner Aeroline Jemima VG-86-CAN 13*

6-01 2x 365d 47800 4.9 2366 3.3 1594

Life: (3 Lacs) 193901 4.5 8662 3.5 6722

• 2 Superior Lactations

Benner Luke Jean VG-86 23*

2-02 2x 365d 41482 3.7 1550 3.4 1391

• 1 EX & 13 VG daughters

• 1 Superior Lactation

Benner Grand Julia VG-87 2*

2-03 2x 365d 29312 4.4 130 3.3 961

Benner Blackstar Janet VG-89 11*

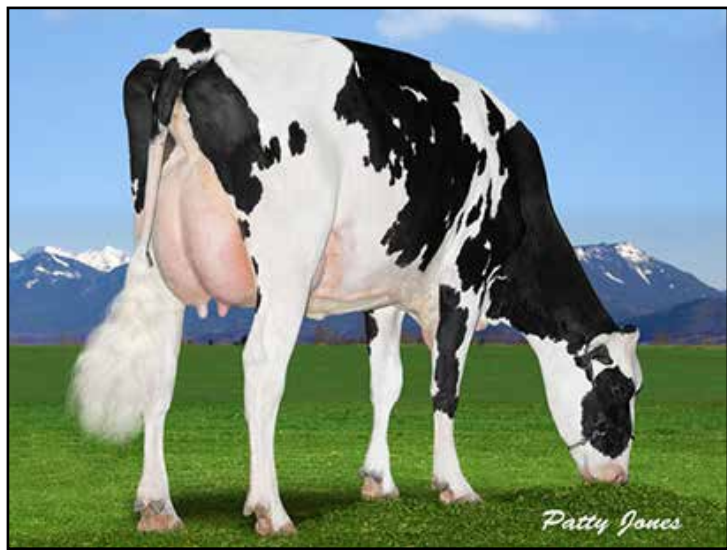
5-04 2x 365d 42760 4.3 1821 3.3 1398

• 3 Superior Lactations

Caroldale Warden Josey VG-88-CAN 8*

9-04 2x 365d 31773 3.9 1241 3.7 1182

• 1 Superior Lactation



CEDARWAL SNOW SWIRL
DAM OF LOT 41



ARCADIA D SHERYL VG-86-2YR
2ND DAM OF LOT 41

41

Holstein Plaza Contacts:

Steve Mower +1 240-520-5906
Jennifer Dingbaum +1 320-250-2412

De-Su Freddie Galaxy-ET

69990052 99%RHA *TV *TL *TY *TD
PTA +1758M +68F +56P 77%R 4/14
PTA +4.4PL 2.76SCS +0.5DPR
PTA +2.65T +2.14UDC +1.77FLC 77%R
GTPI +2280G

Cedarwal Snow Swirl

11323122C Very Good-87-2YR-CAN VG-MS
GLPI+2917 +2026M +84F +59P Conf.+12
2-03 2x 148d 13710 3.7 511 3.0 408 inc.

FIVE #1 EMBRYOS

• *Worldwide Shipment Available*

Badger-Bluff Fanny Freddie

60996956 *TV *TL *TY *TD
PTA +1223M +51F +40P 99%R 4/14
PTA +1.51T +1.53UDC +2.54FLC
GTPI +2239G

De-Su 8947-ET

64701370 Good Plus-84 DOM
2-02 3x 365d 37780 3.7 1406 3.2 1195

Flevo Genetics Snowman-ET

388965513NLD *TV *TL
PTA +2417M +77F +72P 96%R 4/14
PTA +2.70T +1.83UDC +2.16FLC 95%R
GTPI +2188G

Arcadia D Sheryl

10907601C Very Good-86-2YR-CAN
2-01 2x 365d 33618 4.0 1354 3.3 1120

3rd thru 13th Dams

Arcadia D Lou Sofia VG-88-5YR-CAN 2*
4-09 2x 365d 41771 4.6 1903 3.3 1391

Belfast M Goldwyn Shelly

EX-91-CAN EX-92-MS 9*
5-11 2x 365d 36394 4.2 1541 3.2 1175

Maryclerc B Champion Silvia

EX-92-CAN 2E EX-94-MS 10*
6-01 2x 365d 40318 4.3 1744 3.2 1303
Life: (4 Lacs) 193758 4.6 8920 3.3 6398

• *2nd 4-Yr Lotbiniere 2008*

• *3rd 4-Yr Belle Chasse 2008*

Gen-I-Beq Convincer Silver

VG-88-4YR-CAN 15*
2-02 2x 365d 25867 3.6 928 3.2 820

Glen Drummond Splendor

VG-86-2YR-CAN 36*
4-10 2x 314d 26510 4.2 1124 3.2 840

Glen Drummond Aero Flower

VG-88-CAN 18*
2-03 2x 326d 25622 4.0 1032 3.4 882

Glen Drummond Shower-ET EX-CAN 13*

4-10 2x 365d 28583 4.8 1380 3.6 1016

Glen Drummond S C Jo Beth

EX-2E-CAN 7*
10-3 2x 365d 25368 3.8 970 2.9 747
Life (6 Lacs): 141637 4.2 5994 3.2 3593

Grand Champion Brant-Wentworth 1984

Glen Drummond Matt Beth VG-85 4*

11-10 2x 365d 25038 3.7 935
Life (5 Lacs): 105953 4.1 4295

Glen Drummond Marquis Beth VG-CAN

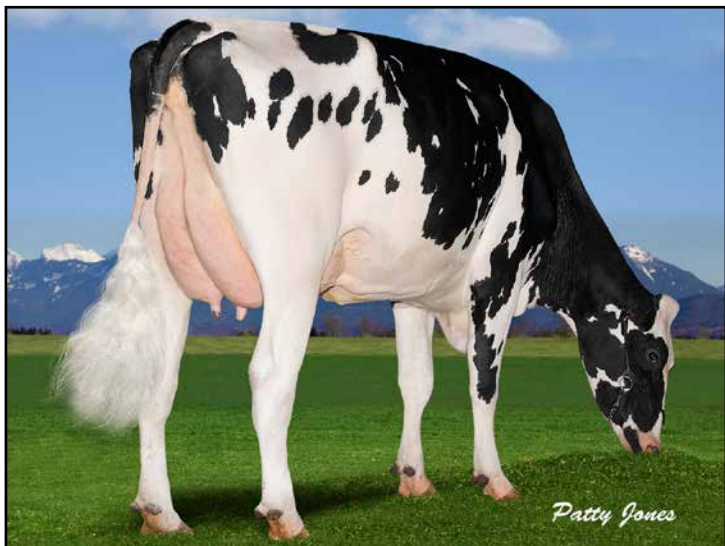
4-08 2x 365d 15964 4.7 754

Life (8 Lacs): 112688 4.2 4766

Ferglynn Rag Apple Bertha VG-CAN 3*

7-00 2x 365d 27796 4.7 1303

Life (9 Lacs): 208857 4.0 8344



COMESTAR LILARRY SHOTTLE VG-87-2YR-CAN
2ND DAM OF LOT 42



COMESTAR GOLDWYN LILAC-ET VG-89-CAN
3RD DAM OF LOT 42

42

FIVE #1 EMBRYOS

• Worldwide Export Available

Holstein Plaza Contacts:

Steve Mower +1 240-520-5906

Jennifer Dingbaum +1 320-250-2412

Pine-Tree AltaOak-ET

69169951 *TV *TL *TD *TY

PTA +1737M +71F +48P 77%R 4/14

PTA +4.2PL 2.58SCS +1.0DPR

PTA +2.56T +2.30UDC +1.45FLC 76%R

GTPI +2330G

Cedarwal Snow Lovely

11444196 Very Good-85-2YR-CAN

GPA-LPI+2991 +2265M +75F +74P Conf.+12

Ri-Val-Re 2338 Niagra-ET

62067753 *TR *TV *TL *TD

PTA +1944M +53F +64P 99%R 4/14

PTA +2.16T +2.22UDC +0.34FLC 98%R

GTPI +2082G

Pine-Tree Leif Suzy-ET

66882395 Very Good-85 VG-MS @ 2-09

Flevo Genetics Snowman-ET

388965513NLD *TV *TL

PTA +2417M +77F +72P 96%R 4/14

PTA +2.70T +1.83UDC +2.16FLC 95%R

GTPI +2188G

Comestar Lilarry Shottle

106303090C Very Good-87-2YR-CAN

GLPI+2671 / Conf.+10

2-02 2x 328d 25767 3.2 825 3.4 864

3rd thru 7th Dams

Comestar Goldwyn Lilac-ET VG-89-CAN

4-06 2x 365d 50607 4.6 2308 3.4 1739

• Nom All-Canadian Sr 2-Yr-Old 2008

• All-Ontario Sr 2-Yr-Old 2008

Lylehaven Lila Z EX-94-CAN 11*

4-05 2x 365d 49101 4.0 1960 3.5 1695

Life (3 Lacs): 166194 3.9 6504 3.4 5701

• HM All-Canadian 5-Year-Old 2007

• HM All-Canadian 4-Year-Old 2006

• All-Canadian Jr 2-Yr-Old Cow 2004

Lylehaven Form Laura-ET EX-94 3E

6-02 2x 365d 35510 4.2 1484 3.1 1088

• HHM All-American Four-Year-Old 2003

• Res All-Canadian Jr 3-Year-Old 2002

Thiersant Lili Starbuck-ET EX-94 4E

9-11 2x 365d 30910 4.5 1385 3.3 1023

Life: 2925d 207386 4.7 9747 3.4 7052

Ivyhall Astro Jet Ronie VG-86-CAN

5-04 2x 305d 18472 4.2 769 3.1 578



SNOWBIZ SYMPATICO SOFIA-RED-ET
MATERNAL SISTER TO LOT 43



GEN-I-BEQ SNOWMAN SUMMER *RC VG-85-2YR
DAM OF LOT 43

43

Holstein Plaza Contacts:

Steve Mower +1 240-520-5906
Jennifer Dingbaum +1 320-250-2412

Aurora-Rama Archive-Red-ET

70611189 *TV *TL *TY *TD
PTA +348M +60F +35P 73%R 4/14
PTA +564NM\$ +2.7PL 2.73SCS +1.9DPR
PTA +2.72T +2.24UDC +1.70FLC 72%R
GTPI +2160G / gRZG+149

Gen-I-Beq Snowman Summer *RC *BY

106807371C VG-85-2YR-CAN VG-MS
GTPI+2234 +1746M +66F +54P +2.91T
2-01 2x 239d 19769 3.5 697 3.0 597 inc.
• *Sympatico son to Semex*

FIVE #1 EMBRYOS

- *Worldwide Export Available*

Tiger-Lily Ladd P-Red-ET

69405976 *B/R *TV *TL *TY
PTA -48M +30F +29P 76%R 4/14
PTA +3.20T +2.80UDC +2.23FLC
GTPI +2170G

RMW Pembroke Adora-ET

69468810 Very Good-86
2-04 3x 305d 27981 4.4 1225 3.3 923

Flevo Genetics Snowman-ET

388965513NLD *TV *TL
PTA +2417M +77F +72P 96%R 4/14
PTA +2.70T +1.83UDC +2.16FLC 95%R
GTPI +2188G

Gen-I-Beq Bolton Secretly *RC

104862616 Very Good-87-CAN 2*
2-01 2x 365d 30474 4.4 1327 3.4 1043

Maternal sisters to Lot 43

Snowbiz Sympatico Sofia-Red-ET

GTPI+2477 +2089M +82F +69P +3.41T
• #1 GTPI, GLPI and RZG Red in the World
• Sold for \$195,000 HP Online Heifer Sale
Snowbiz Ladd P Sunshine *RC *PO
GTPI+2375 +852M +65F +48P +3.11T
• #1 GTPI *RC *PO in the World
• Sold for \$200,000 on the Snowbiz Sale

3rd thru 11th Dams

Gen-I-Beq Goldwyn Secret VG-87-CAN 7*
5-05 2x 365d 30573 4.5 1389 3.4 1038

Gen-I-Beq Durham Sherry VG-87-CAN 8*
5-02 2x 365d 40036 3.9 1574 3.2 1268

Glen Drummond Splendor

VG-86-2YR-CAN 37*
4-10 2x 314d 26510 4.2 1124 3.2 840

Glen Drummond Aero Flower

VG-88-CAN 18*
2-03 2x 326d 25622 4.0 1032 3.4 882

Glen Drummond Shower EX-CAN 14*

4-10 2x 365d 28583 4.8 1380 3.6 1016

Glen Drummond S C Jo Beth

EX-2E-CAN 7*
Life (6 Lacs): 141637 4.2 5994 3.2 3593

- *Grand Champion Brant-Wentworth 1984*

Glen Drummond Matt Beth VG-85 4*

11-10 2x 365d 25038 3.7 935

Life (5 Lacs): 105953 4.1 4295

Glen Drummond Marquis Beth VG-CAN

Life (8 Lacs): 112688 4.2 4766

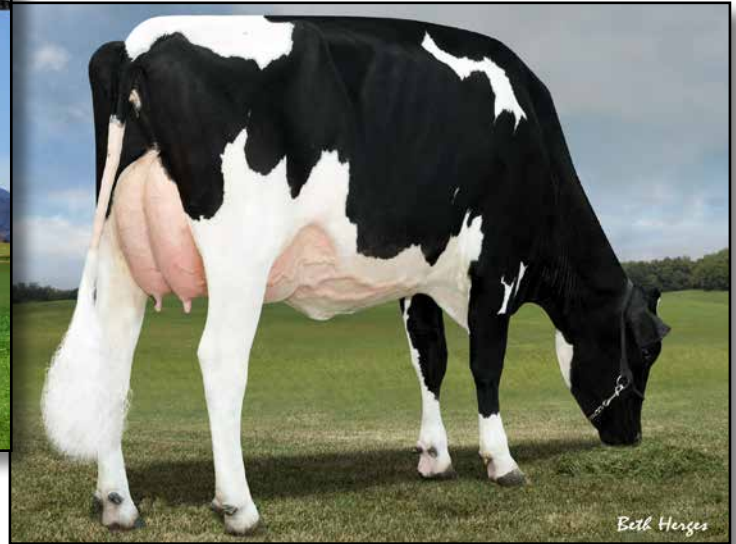
Ferglynn Rag Apple Bertha VG-CAN 3*

7-00 2x 365d 27796 4.7 1303

Life (9 Lacs): 208857 4.0 8344



VENTURE SUPERSIRE SNOW *RC
DAM OF LOT 44



VENTURE SHOTTBOLT SIZZLE P VG-86 VG-MS
FULL SISTER TO 2ND DAM OF LOT 44

44

TWO #1 EMBRYOS

- Worldwide Export Available

Holstein Plaza Contacts:

Steve Mower +1 240-520-5906
Jennifer Dingbaum +1 320-250-2412

Mr Ansly Addiction-P-Red-ET

72128091 *TV
PTA -457M +36F +21P 73%R 4/14
PTA +629NM\$ +5.3PL 2.55SCS +1.9DPR
PTA +3.36T +3.77UDC +1.86FLC 72%R
GTPI +2255G

Venture Supersire Snow *RC

11533377C Born: February 2, 2013
GTPI+2321 +1743M +107F +54P +2.71T
GPA-LPI+3155 / +1988M / +109F
DGV-LPI+3226 / +2115M / +122F
• Top *RC flush-age heifer with high Milk & Fat
• #1 RC for Fat in the breed

Tiger-Lily Ladd P-Red-ET

69405976 *B/R *TV *TL *TY
PTA -48M +30F +29P 76%R 4/14
PTA +3.20T +2.80UDC +2.23FLC
GTPI +2170G

Ms Apples Ainsley-ET *RC

69822262 Very Good-86 VG-MS @ 2-09
2-04 2x 180d 14680 4.5 667 3.2 470 inc.

Seagull-Bay Supersire-ET

69981349 *TV *TL *TY *TD
PTA +2434M +111F +78P 76%R 4/14
PTA +2.40T +1.71UDC +1.28FLC 76%R
GTPI +2420G

Venture Shottbolt Stormy P *RC

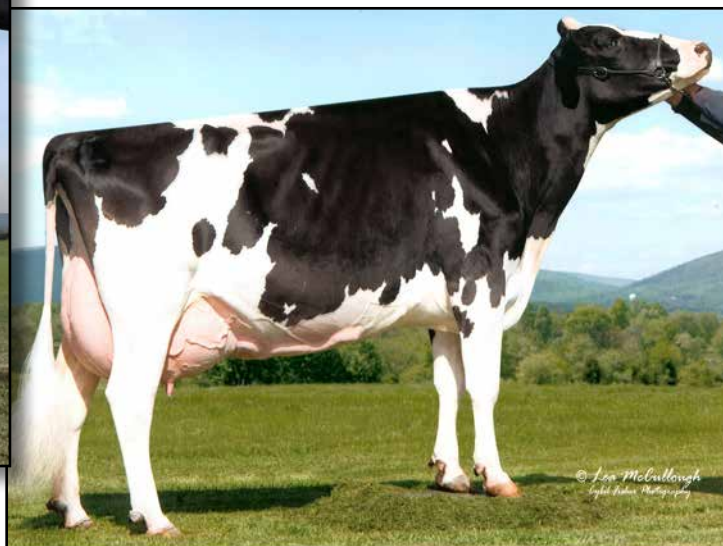
11306298C Good Plus-82
GTPI+1955 +945M +55F +28P +2.79T

3rd thru 8th Dams

Venture Goldwyn Soup P GP-83-CAN
1-11 2x 365d 25620 4.7 1202 3.6 910
Hickorymea-I I Ad Sweet P-Red
GP-83-CAN
4-01 2x 365d 24838 5.1 1246 3.7 895
Hickorymea Airliner Tasha P EX-90
3-01 2x 365d 25289 5.5 1384 3.5 895
Hickorymea Gator Tanya P EX-91 2E
5-07 2x 365d 27251 5.0 1376 3.4 937
Life (5 Lacs): 104582 4.9 5137 3.4 3582
Hickorymea Houdini Tabbi EX-90 3E
8-05 2x 365d 27941 4.4 1232 3.3 930
Life (7 Lacs): 187142 4.6 8543 3.3 6228
Hickorymea Art Penny VG-85 DOM



WINDY-KNOLL-VIEW PRINCESS
DAM OF LOT 45



WINDY-KNOLL-VIEW PLEDGE EX-95 2E GMD DOM
3RD DAM OF LOT 45

45

FIVE #1 EMBRYOS

- Worldwide Export Available

Holstein Plaza Contacts:

Steve Mower +1 240-520-5906

Jennifer Dingbaum +1 320-250-2412

Zahbulls Alta1stClass-ET

71441918 *TY

PTA +1449M +85F +51P 74%R 4/14

PTA +835NM\$ +6.1PL 2.66SCS +1.5DPR

PTA +3.85T +4.19UDC +2.98FLC 74%R

GTPI +2611G

Windy-Knoll-View Princess

72474079 Born: April 9, 2013

GTPI+2398 +2058M +54F +64P +2.47T

• High GTPI and huge milk index

• The Total Package, Genomics, (Show) Type, Pedigree, Longevity and Correctness!

• +270 points above PA-GTPI

Amighetti Numero Uno-ET

ITA 17990915143 *TV *TL *TY

PTA +740M +80F +37P 78%R 4/14

PTA +2.93T +2.82UDC +1.96FLC 77%R

GTPI +2423G

Zahbulls Dorcy Glamour-ET

69551522 Good-Plus-83-2YR DOM

2-01 2x 305d 21660 4.4 955 3.2 694

Seagull-Bay Supersire-ET

69981349 *TV *TL *TY *TD

PTA +2434M +111F +78P 76%R 4/14

PTA +2.40T +1.71UDC +1.28FLC 76%R

GTPI +2420G

Windy-Knoll-View Piano-ET

70312785 Very Good-85 @ 2-07

2-01 2x 305d 26040 3.1 818 2.9 767

3rd thru 6th Dams

Windy-Knoll-View Pledge

EX-95 2E GMD DOM

4-01 2x 365d 41191 3.8 1576 3.2 1314

• 1st 5-Yr World Dairy Expo Madison 2007

• Unanimous All-American 5-Yr Old 2007

• Full sister to the sire of sons PRONTO

Windy-Knoll-View Promis

EX-95-2E GMD DOM

4-08 2x 365d 44121 3.7 1634 3.4 1 484

Life: 1680d 143630 3.7 5339 3.5 4984

• Unanimous All-American 5-Yr-Old 2007

• Res All-American 5-Yr-Old 2003

• HHM & Res All-American Sr 3-Yr-Old 2001

Windy-Knoll-View Ultimate Pala

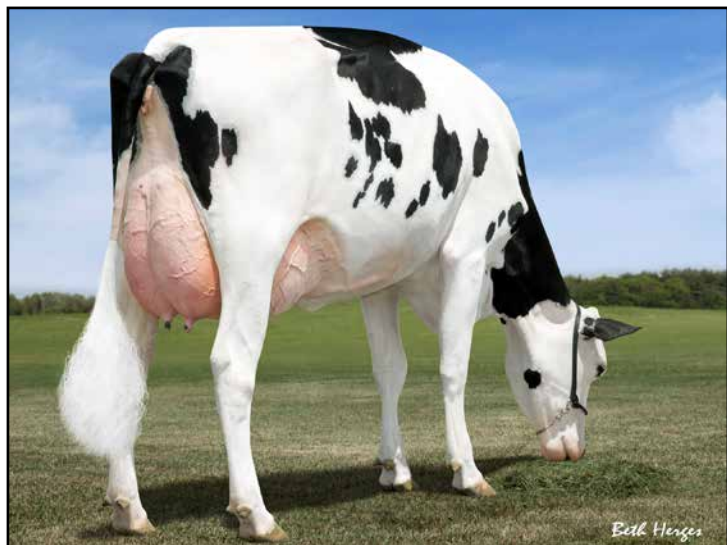
EX-94 3E DOM

5-08 2x 365d 27970 4.5 1268 3.3 933

Life: 2134d 123650 4.7 5777 3.5 4312

Windy-Knoll-View Creek Pauline VG-88

4-09 2x 305d 18960 3.6 690 3.0 573



SEGAULL-BAY SNOW DARLING VG-85 @2-10
DAM OF LOT 46



AMMON-PEACHEY SHAUNA-ET VG-87 88-MS DOM
2ND DAM OF LOT 46

46

FIVE IVF EMBRYOS

• Eligible for shipment in the U.S. and export to the EU and China

Holstein Plaza Contacts:

Steve Mower +1 240-520-5906

Jennifer Dingbaum +1 320-250-2412

Zahbulls Alta1stClass-ET

71441918 *TY

PTA +1449M +85F +51P 74%R 4/14

PTA +835NM\$ +6.1PL 2.66SCS +1.5DPR

PTA +3.85T +4.19UDC +2.98FLC 74%R

GTPI +2611G

Seagull-Bay Snow Darling-ET

70640273 Very Good-85 @2-10

GTPI+2178 +2294M +73F +66P +2.34T

• Dam to Silver +2575G, No. 5 GTPI Bull

• Full sister to Diamond & Platinum

Amighetti Numero Uno-ET

ITA 17990915143 *TV *TL *TY

PTA +740M +80F +37P 78%R 4/14

PTA +2.93T +2.82UDC +1.96FLC 77%R

GTPI +2423G

Zahbulls Dorcy Glamour-ET

69551522 Good-Plus-83-2YR DOM

2-01 2x 305d 21660 4.4 955 3.2 694

Flevo Genetics Snowman-ET

388965513NLD *TV *TL

PTA +2417M +77F +72P 96%R 4/14

PTA +2.70T +1.83UDC +2.16FLC 95%R

GTPI +2188G

Ammon-Peachey Shauna-ET

66228178 Very Good-87 88-MS DOM

GTPI+2166 +1945M +75F +62P +2.31T

2-01 3x 365d 35116 4.1 1427 3.3 1146

• HUGE Bull Dam

• Dam to Supersire, Diamond, Platinum, Headliner and more!

3rd thru 9th Dams

Pine-Tree Martha Sheen-ET VG-86 DOM

1-11 3x 365d 31210 4.2 1305 3.3 1027

Pine-Tree Missy Martha-ET VG-86 DOM

2-02 3x 365d 34730 3.6 1266 3.1 1070

Wesswood-HC Rudy Missy-ET

EX-92 3E DOM

4-11 3x 365d 40880 4.1 1665 3.2 1308

Life: 1262d 119610 4.1 4885 3.2 3804

Wesswood Elton Mimi EX-90 GMD DOM

3-05 2x 365d 35380 3.3 1160 3.2 1121

Wesswood Mandingo Ivy VG-87 VEEV

6-05 2x 365d 36330 3.6 1305 3.0 1087

Life: 1835d 144060 3.4 4933 3.1 4412

Wesswood Astro Matt Esther

VG-87 GMD DOM

6-08 2x 365d 31860 3.5 1125 3.1 982

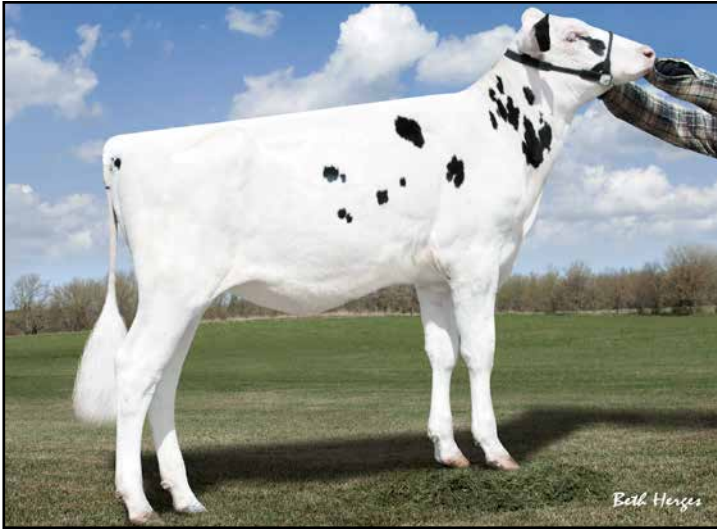
Life: 1847d 140110 3.6 5029 3.2 4424

Wesswood Bell Claudette

VG-87 GMD DOM

9-10 2x 365d 38810 3.6 1383 2.9 1140

Life: 3634d 280980 3.6 9997 3.1 8625



**ROCKING-P BOWSER LUNA VG-85-2YR VG-MS
2ND DAM OF LOT 47**



**ZWB-JP SHOTTLE LULU VG-87-3YR
3RD DAM OF LOT 47**



FIVE IVF EMBRYOS

• Eligible for shipment in the U.S. and export to the EU and China

Holstein Plaza Contacts:

Steve Mower +1 240-520-5906
Jennifer Dingbaum +1 320-250-2412

Cogent Supershot

NLD 755898903 *TL *TD
PTA +2528M +100F +85P 72%R 4/14
PTA +1047NM\$ +7.4PL 2.71SCS +1.9DPR
PTA +2.20T +1.69UDC +1.63FLC 71%R
GTPI +2625G | GLPI +3511 | grZG+161

Butlerview Uno Liva 2074

72437621 Born: February 28, 2013
GTPI+2353 +356M +71F +21P +3.32T
• The highest offspring of Bowser Luna!

Seagull-Bay Supersire-ET

69981349 *TV *TL *TY *TD
PTA +2434M +111F +78P 76%R 4/14
PTA +2.40T +1.71UDC +1.28FLC 76%R
GTPI +2420G

Rose Super Shot

DEU536745399 Very Good-86 VG-MS
2-00 2x 305d 23674 4.0 939 3.6 851

Amighetti Numero Uno-ET

ITA 17990915143 *TV *TL *TY *TD
PTA +740M +80F +37P 78%R 4/14
PTA +2.93T +2.82UDC +1.96FLC 77%R
GTPI +2423G

Rocking-P Bowser Luna-ET

69381312 Very Good-85 VG-MS @2-09
GTPI+2134 +852M +45F +38P +2.80T
2-05 3x 365d 35150 4.4 1536 3.3 1157

3rd thru 14th Dams

ZBW-JP Shottle Lulu-ET VG-87-3YR
2-03 2x 344d 30088 4.1 1234 3.4 1023
SRF-ZBW TS Louanna-ET EX-92 EX-MS
2-00 2x 365d 30030 3.8 1133 3.3 992
Stone-Rise Durham Lizzy
EX-95 3E GMD DOM
6-00 2x 365d 50470 3.4 1558 3.5 1774
Life: 2213d 229970 3.3 7675 3.4 7709
• HHM All-American 125,000 lb Cow 2007
• All-NY Aged Cow 2007
• 3rd 125,000 lb Cow, Int'l Holstein 2007
• All-NY 4-Year-Old 2005
Stone-Rise Indy Leah VG-88 VG-MS
4-01 2x 353 34590 3.5 1205 3.1 1088
Life: 2016d 198790 3.5 6919 3.1 6086
Stone-Rise Horton Lilith GP-81
3-01 2x 346d 26710 3.4 902 3.0 800
Stone-Rise Leadman Lex
VG-88 GMD DOM
9-05 2x 365d 35590 4.1 1454 3.4 1193
Podonque Bell Ellie GP-82
5-06 2x 365d 28110 3.6 1003 3.1 881
Podonque Pete Aaggie Ella VG-86
3-06 2x 331d 18780 3.8 705 3.1 525
Podonque Comet Aaggie Rena EX-90
7-03 2x 294d 21740 3.3 726 3.1 672
Podonque Bootmaker Aaggie Nora
EX-90 GMD
6-09 2x 320d 22020 3.5 764 3.1 680
Podonque X Aaggie Gloria-TW VG-86
10-0 2x 365d 15588 4.3 665
Podonque Burke Aaggie Palma VG-88
11-0 2x 305d 20480 3.5 725
P Medel Aaggie Lucille EX-96



PRESTIGE-GEN AS KICKER
DAM OF LOT 48



BVK ATWOOD ALEX VG-88-2YR @ 2-03
2ND DAM OF LOT 48

48

Holstein Plaza Contacts:

Steve Mower +1 240-520-5906
Jennifer Dingbaum +1 320-250-2412

Val-Bisson Doorman

107281711C 99%RHA-I *TV *TL *TY *TD
PTA +946M +60F +50P 77%R 4/14
PTA +3.8PL 2.53SCS +0.0DPR
PTA +4.02T +3.20UDC +2.18FLC 76%R
GTPI +2370G

Prestige-Gen AS Kicker-ET

142430125 Born: March 1, 2013
• 1st Spring Calf, Illinois Junior Show 2013
• Res Junior Champion, Illinois Jr Show 2013
• 4th Spring Calf, International Jr Show 2013
• 2nd Spring Calf, Illinois Champ Show 2013

FIVE #1 EMBRYOS

• Worldwide Export Available

De-Su 521 Bookem-ET

66636657 *TR *TV *TL *TY *TD
PTA +1585M +49F +61P 99%R 4/14
PTA +2.62T +2.14UDC +1.64FLC 97%R
GTPI +2279G

Val-Bisson Shottle Imelda

106173432 Very Good-85-2YR-CAN
1-11 2x 335d 23783 4.1 985 3.7 8826

Golden-Oaks St Alexander

61133837 *TR *TV *TL *TY *TD
PTA +477M +71F +13P 99%R 4/14
PTA +2.05T +1.39UDC +1.81FLC
GTPI +1718G

BVK Atwood Alex-ET

70476954 Very Good-88 VG-MS @ 2-03

Full sisters to Alex

BVK Atwood Arianna VG-89-2YR

- Nominated All-American Jr 2-Yr-Old 2012
- Unanimous All-Canadian Jr 2-Yr-Old 2012
- 1st Jr 2-Year-Old, Int'l Holstein Show 2012
- 1st Jr 2-Year-Old, Canadian Nat'l Show 2012
- Nom All-American Spring Yearling 2011

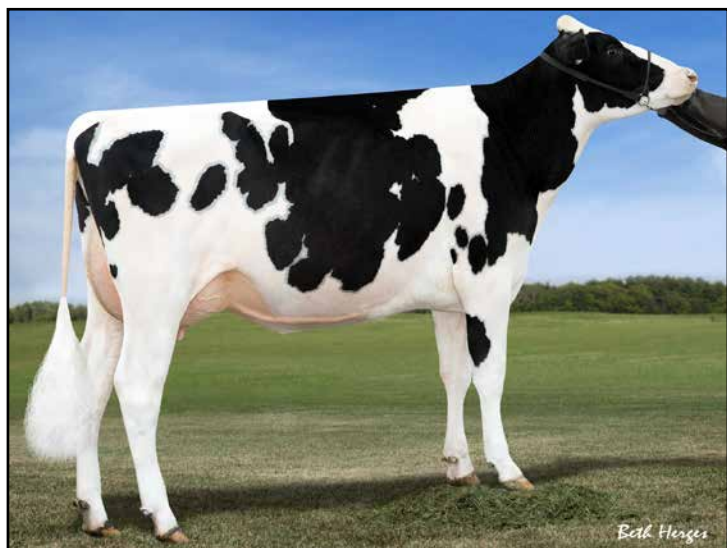
BVK Atwood Abrianna EX-92 (max)

- Reserve All-American Junior 3 Year Old 2013
- 2nd Junior 3 Year Old, Best B&O WDE 2013
- Grand Champion, Illinois State Fair 2013
- Grand Champ, Illinois Championship 2013
- High seller \$49,000, Impact of Ada Sale

3rd and 4th Dam:

Ms Kingstead Chief Adeen-ET

EX-94 EEEEE 2E DOM
3-05 2x 310d 30180 4.0 1209 3.4 1020
• 2x Member All-American Produce
• Nom All-American Jr 3-Yr Old
• Nom All-American 4-Yr Old
• Dam of 16 VG and 11 EX Offspring
C Aitkenbrae Starbuck Ada EX-94 2E DOM
13-8 2x 365d 25150 3.0 764 3.2 796
• All-American Produce of Dam 2000
• 1st Eastern Nat'l 3-Yr Old & Grand Ch 1990



FARNEAR-TBR BOWSR BOYANA VG-85
DAM OF LOT 49



MS BOYANA UNO BRINLEY • GTPI+2395
MATERNAL SISTER TO LOT 49

49

SIX #1 EMBRYOS

• *Worldwide Export Available*

Holstein Plaza Contacts:

Steve Mower +1 240-520-5906

Jennifer Dingbaum +1 320-250-2412

De-Su Distinction 11130-ET

70625882 *TR *TV *L *TY *TD
PTA +1414M +94F +52P 76%R 4/14
PTA +792NM\$ +5.4PL 2.83SCS +0.9DPR
PTA +2.60T +2.36UDC +1.02FLC 76%R
GTPI +2348G

Farnear-TBR Bowsr Boyana

69822164 Very Good-85 VG-MS 2YR
GTPI+2106 +856M +15F +34P +3.29T
2-02 2x 305d 18950 5.6 1059 3.2 600

Ladys-Manor PL Shamrock-ET

68977120 Very Good-85 *TR *TV *TL *TY
PTA +1399M +61F +29P 99%R 4/14
PTA +2.35T +2.13UDC +0.76FLC 96%R
GTPI +2123G

Clear-Echo M-O-M 2150-ET

68669750 VG-87 EX-MS @ 2-06 DOM
2-02 2x 183d 18678 3.9 728 3.1 579 inc.

Laeschway Jet Bowser-ET

64872951 *TV *TL *TY *TD
PTA +362M -11F +26P 99%R 4/14
PTA +1.36T +2.10UDC +1.78FLC
GTPI +1988G

Klassic Mac Barb-ET

61143553 Very Good-85 VG-MS @ 2-11
2-05 2x 365d 30439 4.0 1206 3.5 1067
• *Full sister to Klassic Big Time*

3rd thru 10th Dams

Regancrest Barbi-ET EX-90 DOM

5-00 2x 305d 27379 3.2 869 3.5 948

Regancrest-PR Barbie-ET

EX-92 GMD DOM

2-06 2x 365d 31690 3.9 1237 3.3 1050

• *HM All-American Junior 3-Yr Old 2004*

• *Former #1 Type Cow*

Regancrest Juror Brina-ET EX-92 GMD

4-04 2x 365d 40640 3.6 1478 2.8 1140

• *Member Nom AA Best 3 Females 2000*

• *Res Grand Champ Iowa State Show 2000*

Regancrest Aerostar Bert-ET

EX-90 GMD DOM

5-02 2x 365d 37790 3.6 1357 3.0 1143

Life: 1305d 109350 3.7 4031 3.1 3350

Regancrest Mark Chairman Bea

EX-91 2E GMD

7-09 2x 365d 33630 3.8 1276 2.9 988

Life: 2036d 140130 4.1 5711 3.1 4350

Regancrest Board Chairman Bea EX-90

5-09 2x 365d 26010 4.1 1059 3.2 835

Regancrest Apache Standout Bea VG-86

4-10 2x 320d 19070 4.0 766

Life: 2432d 131940 3.6 4744

Regancrest Standout Bertrand VG-85

4-01 2x 355d 17460 3.3 571



MS CHASSITY COLT CASE *RC
DAM OF LOT 50



REGANCREST S CHASSITY-ET EX-92 GMD DOM
2ND DAM OF LOT 50

50

FOUR #1 EMBRYOS

• Worldwide Export Available

Holstein Plaza Contacts:

Steve Mower +1 240-520-5906

Jennifer Dingbaum +1 320-250-2412

SEXED
semen

Bryhill Socrates P (SEXED)

107535517C *TR *PC *TL *TD
PTA +1914M +99F +65P 72%R 4/14
PTA +725NM\$ +3.4PL 2.89SCS -0.8DPR
PTA +2.21T +2.16UDC +1.47FLC 71%R
GTPI +2283G

Ms Chassity Colt Case-ET *RC

71016172 Born: November 14, 2011
GTPI+1898 +642M +30F +26P +2.32T

Full sister to Case

Mr Chassity Colt 45-ET *RC *PO

GTPI+2020 / PTAT+2.99

Maternal sister to Case

Mr Chassity Gold Chip-ET EX-90

GTPI+1966 / PTAT+3.70

Seagull-Bay Supersire-ET

69981349 *TV *TL *TY *TD
PTA +2434M +111F +78P 76%R 4/14
PTA +2.40T +1.71UDC +1.28FLC 76%R
GTPI +2420G

Venture Shottbolt Sizzle P

11306297 Very Good-86 VG-MS @2-03

Sandy-Valley Colt P-Red-TW

68731810 *PO *TV *TL *TY *TD
PTA +439M -24F +21P 97%R 4/14
PTA +1.86T +2.17UDC +1.74FLC 92%R
GTPI +1859G

Regancrest S Chassity-ET

62496899 Excellent-92 EEEVE GMDDOM
GTPI+1935 +1062M +53F +21P +2.99T
3-10 2x 365d 42280 4.3 1798 2.7 1150
2-01 2x 365d 36680 4.3 1567 3.3 1193
Life: 1071d 105520 4.2 4383 3.0 3158

• Sold for \$1,500,000 as a package with sons
& dtrs in the 2009 Int'l Intrigue Sale
• Global Cow of the Year 2011

3rd thru 10th Dams

Regancrest Cinderella-ET

EX-92 EEEEE 2E GMD DOM
5-00 2x 365d 34220 4.1 1418 3.1 1074
• 1st Sr 3-Yr-Old Cow Midwest Sprg/Nat 2007
• 1st Sr 2-Yr-Old Cow Mideast Fall/Nat 2006

Regancrest-PR Barbie-ET

EX-92 GMD DOM
2-06 2x 365d 31690 3.9 1237 3.3 1050
• HM All-American Junior 3-Yr Old 2004
• Former #1 Type Cow

Regancrest Juror Brina-ET EX-92 GMD

4-04 2x 365d 40640 3.6 1478 2.8 1140
• Member Nom AA Best 3 Females 2000
• Res Grand Champ Iowa State Show 2000

Regancrest Aerostar Bert-ET

EX-90 GMD DOM
5-02 2x 365d 37790 3.6 1357 3.0 1143
Life: 1305d 109350 3.7 4031 3.1 3350

Regancrest Mark Chairman Bea

EX-91 2E GMD
7-09 2x 365d 33630 3.8 1276 2.9 988
Life: 2036d 140130 4.1 5711 3.1 4350

Regancrest Board Chairman Bea EX-90

5-09 2x 365d 26010 4.1 1059 3.2 835

Regancrest Apache Standout Bea VG-86

4-10 2x 320d 19070 4.0 766
Life: 2432d 131940 3.6 4744

Regancrest Standout Bertrand VG-85

4-01 2x 355d 17460 3.3 571



FARNEAR LIGHT PRESENT
DAM OF LOT 51



FARNEAR O-STYLE LIGHT VG-85 VG-MS @ 2-05
2ND DAM OF LOT 51

51

FIVE #1 IVF EMBRYOS

• Domestic Shipment Only

Holstein Plaza Contacts:

Steve Mower +1 240-520-5906

Jennifer Dingbaum +1 320-250-2412

Zahbulls Alta 1stClass-ET

71441918 *TY

PTA +1449M +85F +51P 74%R 4/14

PTA +835NM\$ +6.1PL 2.66SCS +1.5DPR

PTA +3.85T +4.19UDC +2.98FLC 74%R

GTPI +2611G

Farnear Light Present-ET

71290833

Born: June 1, 2012

GTPI+2338 +1714M +56F +58P +3.05T

Amighetti Numero Uno-ET

ITA 17990915143 *TV *TL *TY

PTA +740M +80F +37P 78%R 4/14

PTA +2.93T +2.82UDC +1.96FLC 77%R

GTPI +2423G

Zahbulls Dorcy Glamour-ET

69551522 Good-Plus-83-2YR DOM

2-01 2x 305d 21660 4.4 955 3.2 694

Welcome Peoti-ET

69207565 *TR *TV *TL *TY *TD

PTA +1044M +79F +61P 79%R 4/14

PTA +2.17T +1.73UDC +2.11FLC 78%R

GTPI +2163G

Farnear O-Style Light

69320673 Very Good-85 VG-MS @ 2-05

GTPI+2112+1371M +20F +30P +2.08T

2-04 2x 365d 27870 3.3 929 3.2 880

3rd thru 9th Dams

Farnear Queen Mac Mavis-ET VG-86

2-04 2x 365d 31370 3.5 1112 3.0 951

Honeycrest Throne Queen-ET

VG-87 VG-MS GMD DOM

2-08 2x 365d 37230 4.1 1515 3.3 1246

Honeycrest Patron Tanya

VG-87 GMD DOM

4-04 2x 365d 33980 3.8 1292 3.3 1106

Honeycrest Aerostar Mary-ET

EX-90 GMD DOM

5-05 2x 365d 47470 3.7 1766 3.1 1486

Life: 1793d 150600 3.7 5626 3.4 5105

Honeycrest Blkstar Kathryn

EX-90 GMD DOM

3-06 2x 365d 28740 3.7 1074 3.4 976

Honeycrest Mars Kathleen VG-88 DOM

4-06 2x 365d 27460 3.7 1004 3.4 925

Honeycrest Bell Kathleen EX-90

9-02 2x 364d 30070 3.7 1119 3.2 958

Life: 2444d 163720 3.7 6047 3.3 5409

TERMS and CONDITIONS

GENERAL:

- These terms are valid for all agreements made through this sale.
- The organization of the sale is done by Holstein Plaza, part of AMS Genetics International LLC.
- The party, which offers embryos in this sale will be named after this as the “seller” and the party who buys through this sale and gets the sale item assigned, will be hereinafter identified as the “buyer”.
- The organization will only act as an intermediary in the realization from a (purchase) agreement between seller and buyer.

HOW DOES THE SALE WORK:

- All embryos sell with reasonable starting bid.
- The bid price is the per embryo price. If a lot has four embryos and the price is \$500.00 that means the lot price is \$2,000.00.
- When you place a bid, you agree to pay for the item if you're the winning bidder.
- All embryos are froze DT unless otherwise noted in catalog.
- All embryos are available for immediate shipment unless otherwise noted in catalog.
- There are two ways of placing a bid: internet (www.holstein-plaza.com) or via one of the listed Holstein Plaza contact persons.
- The bids are made in US dollars.
- When you place a bid, you enter the maximum amount you're willing to pay for the item. The other bidders and the sale organization will not be able to see your maximum bid. Through this Proxy bidding system, the Holstein Plaza auction system will increase your bid to the next lowest price when another user bids on the same item. The proxy bidding process continues until your maximum bid amount is reached or the auction ends. Every bidder is bound to his bid.
- The sale is using the popcorn bid system/5-minute rule ([click here for more information on the popcorn bid system/5-minute rule](#)). Until that moment bids will be accepted.
- All risks of the embryos are the responsibility of the buyer once the embryos are delivered to the buyer.
- The transportation of embryos from the seller to the buyer will take place as soon as possible after the sale, but not before complete payment as invoiced from AMS Genetics is received from the successful buyer.
- AMS Genetics will coordinate the paperwork and transfers with Holstein.

PAYMENT:

- Payment for all purchases is due within ten days of sale.
- Sale invoices will be sent via e-mail or fax following the conclusion of the sale.
- Embryo release forms are issued once proper payment has been received and processed by AMS Genetics.
- Payment will not be released to the seller until AMS Genetics has received proper transfer paperwork.
- Holstein Plaza charges a buyer's commission of \$50 per embryo to include all necessary paperwork; note, this fee does not include shipping.
- International buyers are responsible for shipping the embryos. Buyers will be contacted after the sale about their wishes and requirements for exporting the embryos.
- All embryos needing international shipment will be charged a flat fee of \$150 per lot for export documentation.
- AMS Genetics can handle export and shipping. In case export is being done through AMS Genetics an additional \$50 export fee per embryo will be charged. This flat fee does not cover transport. Buyer should arrange shipping within 60 days of the ending sale date.

EXCLUDING LIABILITY:

- The organization cannot be held responsible for errors on the internet site, sale catalog or in the advertisements.
- The organization cannot be held responsible for visual or non visual regardless the size or nature of such defect of the sold item.
- The organization does not take any responsibility for damage to persons or cases, which has arisen because of or connected to the sale.
- The cow indexes mentioned therein have been calculated or converted by the herdbook in the country the donor cow is housed in accordance with the current methods. All official pedigrees of sale animals can be seen.
- All frozen embryos are rated first class by official and registered ET veterinarians unless stated different on the website. In case embryos sold as first class after thawing turn out as class two or lower and not end in a pregnancy, the seller will be responsible for a refund, either in the form of an embryo with similar pedigree value or the purchase amount for the embryo. It is of vital importance that any claim is accompanied with an official statement in English from a recognized ET veterinarian. This should be sent to Holstein Plaza.
- Every bidder and seller is held to conform to the auction conditions. The act of bidding and consigning implicates knowledge and acceptance of these conditions.
- The organization can never be held responsible in case the embryos cannot be exported no matter what reason.