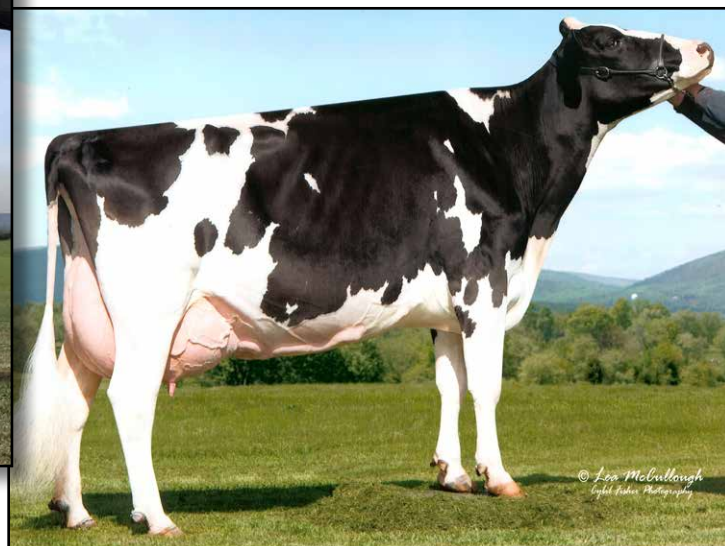




WINDY-KNOLL-VIEW PRINCESS  
DAM OF LOT 1



WINDY-KNOLL-VIEW PLEDGE EX-95 2E GMD DOM  
3RD DAM OF LOT 1

1

## FIVE #1 EMBRYOS

- For Export ONLY; cannot be shipped in the U.S.

### Holstein Plaza Contacts:

Steve Mower +1 240-520-5906

Jennifer Dingbaum +1 320-250-2412

### Woodcrest Mogul Yoder-ET

72254526

PTA +1830M +106F +69P 73%R 4/14

PTA +924NM\$ +5.3PL 2.74SCS +0.7DPR

PTA +3.09T +2.60UDC +2.34FLC 73%R

GTPI +2554G

### Windy-Knoll-View Princess

72474079 Born: April 9, 2013

GTPI+2398 +2058M +54F +64P +2.47T

• High GTPI and huge milk index

• The Total Package, Genomics, (Show) Type,

Pedigree, Longevity and Correctness!

• +270 points above PA-GTPI

### Mountfield SSI Dcy Mogul

3006972816 \*TV \*TL \*TY \*TD

PTA +1377M +79F +49P 78%R 4/14

PTA +2.81T +2.99UDC +2.78FLC 77%R

GTPI+2394G

### Woodcrest Planet Yakara

3008363689 Very Good-85

2-00 3x 305d 27530 3.6 1004 3.3 908

### Seagull-Bay Supersire-ET

69981349 \*TV \*TL \*TY \*TD

PTA +2434M +111F +78P 76%R 4/14

PTA +2.40T +1.71UDC +1.28FLC 76%R

GTPI +2420G

### Windy-Knoll-View Piano-ET

70312785 Very Good-85 @ 2-07

2-01 2x 305d 26040 3.1 818 2.9 767

### 3rd thru 6th Dams

#### Windy-Knoll-View Pledge

EX-95 2E GMD DOM

4-01 2x 365d 41191 3.8 1576 3.2 1314

• 1st 5-Yr World Dairy Expo Madison 2007

• Unanimous All-American 5-Yr Old 2007

• Full sister to the sire of sons PRONTO

#### Windy-Knoll-View Promis

EX-95-2E GMD DOM

4-08 2x 365d 44121 3.7 1634 3.4 1 484

Life: 1680d 143630 3.7 5339 3.5 4984

• Unanimous All-American 5-Yr-Old 2007

• Res All-American 5-Yr-Old 2003

• HHM & Res All-American Sr 3-Yr-Old 2001

#### Windy-Knoll-View Ultimate Pala

EX-94 3E DOM

5-08 2x 365d 27970 4.5 1268 3.3 933

Life: 2134d 123650 4.7 5777 3.5 4312

#### Windy-Knoll-View Creek Pauline VG-88

4-09 2x 305d 18960 3.6 690 3.0 573





VANGO DURHAM TREASURE EX-96 2E  
DAM OF LOT 2



VANGO DURHAM TREASURE EX-96 2E  
DAM OF LOT 2



## FIVE #1 IVF FEMALE EMBRYOS

• Eligible for shipment to the U.S. and export to EU and China

### Holstein Plaza Contacts:

Steve Mower +1 240-520-5906  
Jennifer Dingbaum +1 320-250-2412

### Maple-Downs-I G W Atwood-ET

8956379C Very Good-87 \*TV \*TL \*TY \*TD  
PTA +294M +51F +15P 99%R 4/14  
PTA +219NM\$ +1.0PL 2.97CS -2.5DPR  
PTA +4.66T +3.51UDC +3.74FLC 99%R  
GTPI +1942G

### Vangoh Durham Treasure

135490787 Excellent-96 EX-99-MS 2E  
4-10 2x 365d 35200 4.0 1399 3.4 1212  
7-07 2x 365d 35300 3.8 1347 3.5 1225  
Life: 2131d 179530 3.8 6855 3.5 5225  
• Res Gr Champ, Midwest Spring Nat'l 2014  
• 1st 150,000lb Midwest Spring National 2014  
• Best Udder Show, Midwest Spring Nat'l 2014

### Braedale Goldwyn

CAN 10705608 GP-CAN EX'05 \*TV \*TL  
PTA -9M +31F +13P 99%R 4/14  
PTA +2.80T +2.45UDC +2.36FLC  
GTPI +1879G

### MD-Delight Durham Atlee-ET

131704103 Excellent-92 EEEEE DOM  
3-11 2x 365d 38290 5.5 2091 3.1 1177  
• All-American Senior 3-Year-Old 2005

### Regancrest Elton Durham-ET

2250783 EX-90 GM 8/01 \*TR \*CV \*TL  
PTA -263M -33F +5P 99%R 4/14  
PTA +2.45T +2.17UDC +2.07FLC  
GTPI +1568G

### Talk-About Linjet Try

131809022 Excellent-90 EX-MS 2E  
4-07 2x 365d 27760 3.7 1030 3.3 912  
3-05 2x 356d 25970 4.0 1046 3.3 857  
8-03 2x 365d 21990 3.8 839  
6-07 2x 305d 21410 3.9 828 3.0 650  
Life: 2309d 136220 3.9 5311 3.3 3701

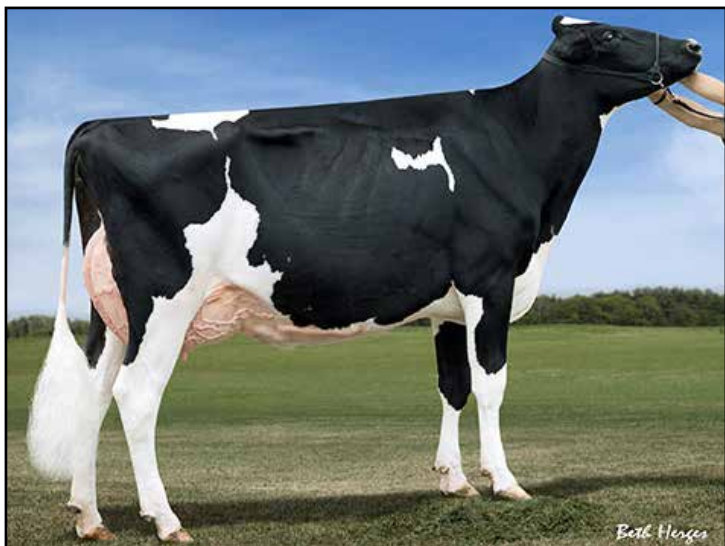
### DURHAM TREASURE!

- Res Gr Champ, Midwest Spring Nat'l 2014
- 1st 150,000lb Midwest Spring National 2014
- Best Udder Show, Midwest Spring Nat'l 2014
- Highest classified uddered cow in the U.S.
- Unanimous All-American 125,000 lb 2013
- 1st 125,000 lb Cow, Int'l Holstein Show '13
- Reserve All-American Aged Cow 2011
- Nom All-Canadian Mature Cow 2011
- 2nd Production Class, RAWF 2011
- Nom All-American 125,000 Lb Cow 2010
- Res Grand Ch, Midwest Spring Nat'l 2010
- 1st 5-Yr-Old, Midwest Spring National 2009
- Best Udder Show, Midwest Spring Nat'l 2009
- Nom All-American Senior 3-Year-Old 2007

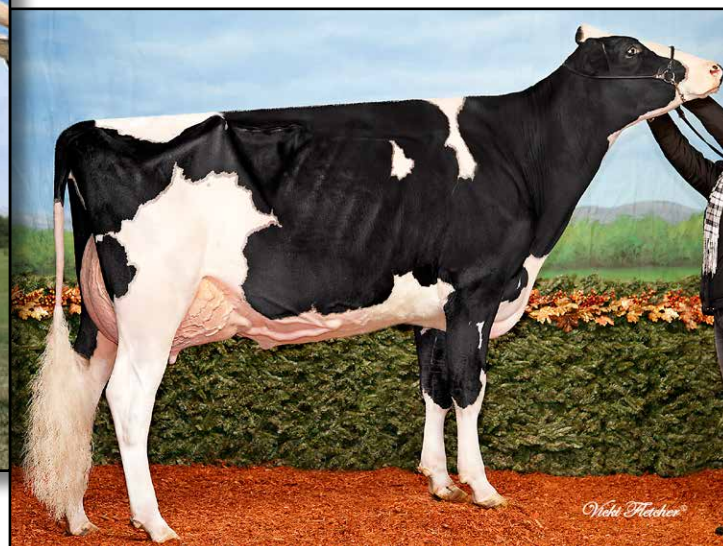
### 3rd thru 7th Dams

**Debello-Hills A Trinity-ET** VG-87 VG-MS  
3-05 3x 306d 25610 3.5 907 3.3 839  
**Debello-Hills Star Trixster** EX-90 EX-MS  
5-11 3x 365d 37430 3.5 1305 2.9 1098  
Life: 2521d 211470 3.7 7792 3.1 6463  
**Rol-Chris Astro Jet Trixie**  
EX-94 3E GMD DOM  
7-06 3x 347d 34320 3.4 1156 3.0 1042  
Life: 2724d 225180 3.4 7732 3.1 6889  
**Apple-Lawn Matt Thea** VG-88  
6-01 2x 305d 24880 3.2 802 2.9 730  
Life: 2105d 130130 3.1 4099 3.0 3900  
**Apple-Lawn Beau Trena** VG-85  
3-04 2x 347d 17610 4.3 752 3.5 617





**BVK ATWOOD ABRIANNA EX-92 EX-MS**  
DAM OF LOT 3



**BVK ATWOOD ARIANNA VG-89-2YR EX-MS**  
FULL SISTER TO DAM OF LOT 3

3

## FOUR #1 EMBRYOS

- Worldwide Export Available

### Holstein Plaza Contacts:

Steve Mower +1 240-520-5906

Jennifer Dingbaum +1 320-250-2412

### Val-Bisson Doorman

107281711C 99%RHA-I \*TV \*TL \*TY \*TD

PTA +946M +60F +50P 77%R 4/14

PTA +3.8PL 2.53SCS +0.0DPR

PTA +4.02T +3.20UDC +2.18FLC 76%R

GTPI +2370G

### BVK Atwood Abrianna

140658941 Excellent-92 EEEVE @ 3-05

GTPI+1640G +4.25T

3-02 2x 283d 23792 5.1 1202 3.4 802 inc.

2-02 2x 305d 20740 4.0 822 3.6 690

• Reserve All-American Junior 3 Year Old 2013

• 2nd Junior 3 Year Old, Best B&O WDE 2013

• Grand Champion, Illinois State Fair 2013

• Grand Champ, Illinois Championship 2013

• High seller \$49,000, Impact of Ada Sale

• Several daughter over +4.40T

### De-Su 521 Bookem-ET

66636657 \*TR \*TV \*TL \*TY \*TD

PTA +1585M +49F +61P 99%R 4/14

PTA +2.62T +2.14UDC +1.64FLC 97%R

GTPI +2279G

### Val-Bisson Shottle Imelda

106173432 Very Good-85-2YR-CAN

1-11 2x 335d 23783 4.1 985 3.7 882

### Maple-Downs-I G W Atwood-ET

8956379C Very Good-87 \*TV \*TL \*TY \*TD

PTA +261M +48F +12P 99%R 12/13

PTA +4.66T +3.47UDC +3.85FLC 99%R

GTPI +1932G

### Ms Kingstead Chief Adeen-ET

17302711 Excellent-94 EEEEE 2E DOM

3-05 2x 310d 30180 4.0 1209 3.4 1020

Life: 1382d 100760 4.0 4010 3.4 3458

• 2x Member All-American Produce

• Nom All-American Jr 3-Yr Old

• Nom All-American 4-Yr Old

• Dam of 16 VG and 11 EX Offspring

### Full sisters to Abrianna

**BVK Atwood Arianna VG-89-2YR**

• Nominated All-American Jr 2-Yr-Old 2012

• Una. All-Canadian Jr 2-Yr-Old 2012

• 1st Jr 2-Year-Old, Int'l Holstein Show 2012

• 1st Jr 2-Yr-Old, Canadian Nat'l Show 2012

• 1st Jr 2-Yr-Old, Canadian Nat'l Show 2012

• Nom All-American Spring Yearling 2011

**BVK Atwood Alex VG-88-2YR**

### 3rd Dam

**C Aitkenbrae Starbuck Ada EX-94 2E DOM**

13-8 2x 365d 25150 3.0 764 3.2 796

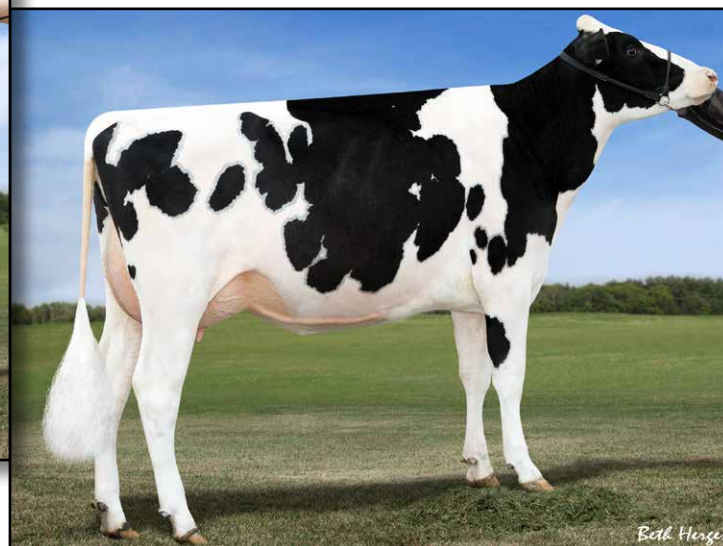
• All-American Produce of Dam 2000

• 1st Eastern Nat'l 3-Yr Old & Grand Ch 1990





**MS BOYANA UNO BRINLEY-ET**  
DAM OF LOT 4



**FARNEAR-TBR BOWSR BOYANA VG-85 VG-MS**  
2ND DAM OF LOT 4

4

## THREE #1 EMBRYOS

• Worldwide Export Available

### Holstein Plaza Contacts:

Steve Mower +1 240-520-5906

Jennifer Dingbaum +1 320-250-2412

### View-Home Monterey

69087180

PTA +1571M +83F +65P 74%R 4/14

PTA +5.8PL 2.90SCS +0.7DPR

PTA +3.74T +3.60UDC +2.33FLC 74%R

GTPI +2578

### Ms Boyana Uno Brinley-ET

71494817

Born: August 6, 2012

GTPI+2413 +781M +46F +34P +4.09T

### De-Su Bkm McCutchen 1174-ET

69990138 \*TV \*TL \*TY \*TD

PTA +1277M +66F +51P 78%R 4/14

PTA +3.72T +3.36UDC +2.57FLC 78%R

GTPI +2384G

### Pine-Tree 2149Robst 4846

69804610 Very Good-85 VG-MS @ 2-07

### Amighetti Numero Uno-ET

ITA 17990915143 \*TV \*TL \*TY

PTA +740M +80F +37P 78%R 4/14

PTA +2.93T +2.82UDC +1.96FLC 77%R

GTPI +2423G

### Farnear-TBR Bowsr Boyana

69822164 Very Good-85 VG-MS @ 2-08

GTPI+2056 +872M +14F +34P +3.49T

2-02 2x 305d 18950 5.6 1059 3.2 600

### 3rd thru 11th Dams

#### Klassic Mac Barb-ET VG-85

2-05 2x 365d 30439 4.0 1206 3.5 1067

#### Regancrest Barbi-ET EX-90 DOM

5-00 2x 305d 27379 3.2 869 3.5 948

#### Regancrest-PR Barbie-ET

EX-92 GMD DOM

2-06 2x 365d 31690 3.9 1237 3.3 1050

• HM All-American Junior 3-Yr Old 2004

• Former #1 Type Cow

#### Regancrest Juror Brina-ET EX-92 GMD

4-04 2x 365d 40640 3.6 1478 2.8 1140

• Member Nom AA Best 3 Females 2000

• Res Grand Champ Iowa State Show 2000

#### Regancrest Aerostar Bert-ET

EX-90 GMD DOM

5-02 2x 365d 37790 3.6 1357 3.0 1143

Life: 1305d 109350 3.7 4031 3.1 3350

#### Regancrest Mark Chairman Bea

EX-91 2E GMD

7-09 2x 365d 33630 3.8 1276 2.9 988

Life: 2036d 140130 4.1 5711 3.1 4350

#### Regancrest Board Chairman Bea EX-90

5-09 2x 365d 26010 4.1 1059 3.2 835

#### Regancrest Apache Standout Bea VG-86

4-10 2x 320d 19070 4.0 766

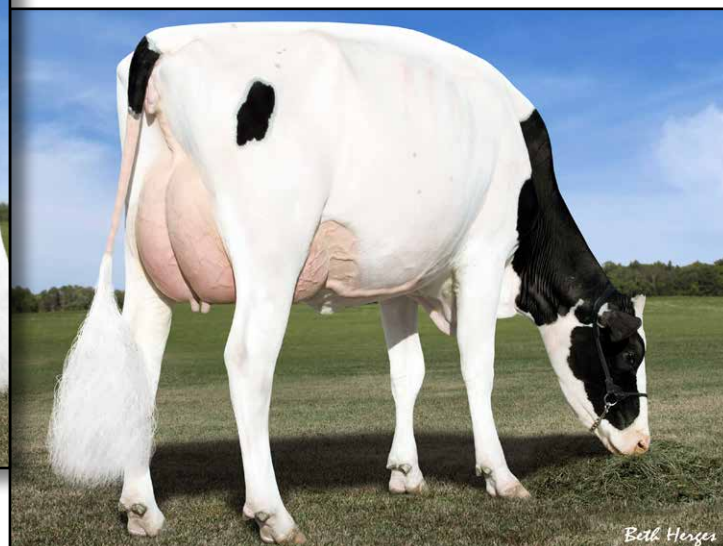
Life: 2432d 131940 3.6 4744

#### Regancrest Standout Bertrand VG-85

4-01 2x 355d 17460 3.3 571



DYMENTHOLM SUNVIEW SUNDAY \*RC VG-85-2YR  
DAM OF LOT 5



DES-Y-GEN PLANET SILK-ET \*RC EX-90 92-MS  
2ND DAM OF LOT 5

5

## FOUR #1 EMBRYOS

• Worldwide Export Available

### Holstein Plaza Contacts:

Steve Mower +1 240-520-5906

Jennifer Dingbaum +1 320-250-2412

### Stantons Main Event-ET

11596146C

PTA +1340M +72F +54P 74%R 4/14

PTA +902NM\$ +7.1PL 2.64SCS +2.8DPR

PTA +3.08T +2.87UDC +2.98FLC 73%R

GTPI +2567G

### Dymenthholm Sunview Sunday \*RC

11004730 Very Good-85-2YR-USA

GTPI+2256 +2272M +82F +73P +2.67T

GLPI +3007 / Conf. +10 /

• The highest milking daughter of Planet Silk!

• First sons and daughters scoring high for GTPI, GLPI & RZG!

• Full sister to Sympatico \*RC

• \*RC Cashcoin son has RZG+161

Maternal sister to:

### Dymenthholm Sunview Sassy-ET \*RC

GTPI+2436 +845NM\$ +2.88T

### Josey-LLC Uno Sangaria-ET \*RC

GTPI+2386 +769NM\$ +3.34T

### Mountfield SSI Dcy Mogul

3006972816 \*TV \*TL \*TY \*TD

PTA +1377M +79F +49P 78%R 4/14

PTA +2.81T +2.99UDC +2.78FLC 77%R

GTPI+2394G

### Stantons Super Elda

11084001C Good Plus-83-2YR

2-01 3x 365d 31343 4.1 1274 3.3 1038

### Flevo Genetics Snowman-ET

388965513NLD \*TV \*TL

PTA +2417M +77F +72P 96%R 4/14

PTA +2.70T +1.83UDC +2.16FLC 95%R

GTPI +2188G

### Des-Y-Gen Planet Silk-ET \*RC \*TY

106109413C Excellent-90 92-MS @ 4-03

GTPI+2076 +1215M +80F +38P +1.98T

2-02 2x 365d 29990 4.5 1351 3.2 960

• #14 GTPI \*RC Cow, Locator List 4/14

• Nominated HI Global Red Impact Cow

• Dam of Sympatico, Seneca and Stoic

### 3rd thru 12th Dams

#### Gen-I-Beq Bolton Silence \*RC

VG-85-2YR-CAN

2-04 2x 365d 30002 4.6 1391 3.6 1069

#### Gen-I-Beq Goldwyn Secret VG-87-CAN 4\*

5-05 2x 365d 30573 4.5 1389 3.4 1038

#### Gen-I-Beq Durham Sherry VG-87-CAN 7\*

5-02 2x 365d 40036 3.9 1574 3.2 1268

#### Glen Drummond Splendor

VG-86-2YR-CAN 36\*

4-10 2x 314d 26510 4.2 1124 3.2 840

#### Glen Drummond Aero Flower

VG-88-CAN 18\*

2-03 2x 326d 25622 4.0 1032 3.4 882

#### Glen Drummond Shower EX-CAN 13\*

4-10 2x 365d 28583 4.8 1380 3.6 1016

#### Glen Drummond S C Jo Beth

EX-2E-CAN 7\*

Life (6 Lacs): 141637 4.2 5994 3.2 3593

• Grand Champion Brant-Wentworth 1984

#### Glen Drummond Matt Beth VG-85 4\*

11-10 2x 365d 25038 3.7 935

Life (5 Lacs): 105953 4.1 4295

#### Glen Drummond Marquis Beth VG-CAN

Life (8 Lacs): 112688 4.2 4766

#### Ferglynn Rag Apple Bertha VG-CAN 3\*

7-00 2x 365d 27796 4.7 1303

Life (9 Lacs): 208857 4.0 8344





**GOLD-N-OAKS ARABELL 1765-ET VG-88**  
MATERNAL SISTER TO THE 3RD DAM OF LOT 6

6

## FIVE #1 EMBRYOS

• Worldwide Export Available

### Holstein Plaza Contacts:

Steve Mower +1 240-520-5906

Jennifer Dingbaum +1 320-250-2412

### Bacon-Hill Montross-ET

7170339 \*TV \*TL \*TY \*TD

PTA +2701M +91F +79P 73%R 4/14

PTA +4.5PL 2.78SCS +0.1DPR

PTA +2.92T +2.44UDC +2.73FLC 73%R

GTPI +2496G

### Gold-N-Oaks Harlow2629

72366800

Born: April 27, 2013

GTPI+2344 +1034M +47F +47P +2.80T

### Mountfield SSI Dcy Mogul

3006972816 \*TV \*TL \*TY \*TD

PTA +1377M +79F +49P 78%R 4/14

PTA +2.81T +2.99UDC +2.78FLC 77%R

GTPI+2394G

### Unique-Style Bolton Money

139121711 Excellent-91 EX-MS DOM

2-00 2x 334d 23520 3.7 871 3.3 771

### Butz-Butler Shotgun-ET

70476870 \*TY

PTA +2272M +77F +61P 76%R 4/14

PTA +2.32T +1.90UDC +2.09FLC 75%R

GTPI +2328G

### Gold-N-Oaks B Harper2278-ET

69928725

GTPI+2202 +3.39T +2.96UDC +2.31FLC

• Many brothers in AI

• Just fresh and will score soon, should be VG-86/87

### 3rd thru 11th Dams

**Gold-N-Oaks Marcona1927 EX-90 DOM**

2-02 2x 365d 27070 4.2 1137 3.1 840

**Gold-N-Oaks S Marbella-ET**

VG-89 EX-MS DOM

2-00 2x 365d 31580 4.2 1321 3.2 1008

**Gold-N-Oaks Morty Malibu-ET**

EX-94 EEEEE 2E

1-11 2x 365d 31260 4.5 1420 3.2 989

**Gold-N-Oaks Marshl Cinda-ET**

VG-87 GMD DOM

3-06 2x 365d 41950 4.1 1720 3.3 1383

Life: 1236d 126520 4.3 5416 3.4 4324

**Gold-N-Oaks Bosco Cinnamon EX-92**

5-03 2x 350d 41550 4.8 1993 3.0 1244

**Gold-N-Oaks Duster Cindy VG-88 DOM**

3-03 2x 365d 41700 4.3 1774 3.1 1299

Life: 1161d 112960 4.1 4542 3.3 3754

**Gold-N-Oaks Melwood Cinder**

VG-89 GMD

3-02 2x 365d 37090 3.4 1243 3.0 1130

**Gold-N-Oaks Cinder Cinnamon VG-85**

2-02 2x 340d 24230 3.9 939 3.1 753

**Gold-N-Oaks Command Brandy VG-86**

4-07 2x 301d 21620 4.6 999 3.2 686



**T-GEN-AC DENZEL JANARDY**  
DAM OF LOT 7



**BENNER FORK JANARDAN VG-87 VG-MS @ 2-10**  
2ND DAM OF LOT 7



## THREE #1 EMBRYOS

- Worldwide Export Available

### Holstein Plaza Contacts:

Steve Mower +1 240-520-5906

Jennifer Dingbaum +1 320-250-2412



### Mr Mogul Delta 1427-ET (SEXED)

72128216

PTA +1643M +93F +60P 73%R 4/14

PTA +1005NM\$ +7.8PL 2.60SCS +1.5DPR

PTA +2.75T +2.63UDC +1.92FLC 73%R

GTPI +2567G

### T-Gen-AC Denzel Janardy-ET

72641519

Born: March 26, 2013

GTPI+2372 +1369M +95F +54P +2.98T

- #1 GTPI Denzel in the Breed

### Mountfield SSI Dcy Mogul

3006972816 \*TV \*TL \*TY \*TD

PTA +1377M +79F +49P 78%R 4/14

PTA +2.81T +2.99UDC +2.78FLC 77%R

GTPI+2394G

### Miss OCD Robst Delicious-ET

3006989479 Very Good-86 DOM

### Ronelee Shottbolt Denzel-ET

69716523 \*TV \*TL \*TY \*TD

PTA +1517M +52F +36P 78%R 4/14

PTA +2.89T +2.42UDC +2.22FLC 77%R

GTPI +2251G

### Benner Fork Janardan-ET

11271465C Very Good-87 VG-MS @ 2-10

GTPI+2228 +1434M +87F +54P +2.88T

### 3rd thru 7th Dams

**Benner Planet Jakova** GP-83-2YR-CAN

2-00 2x 365d 33468 5.5 1841 3.7 1248

- 1 Superior Lactation

- No. 16 GLPI Cow in Canada

**Benner Goldwyn Jamarco** VG-87-CAN 4\*

2-02 2x 365d 35075 4.7 1651 3.5 1226

- 1 Superior Lactation

**Benner Outside Joyce** VG-85-2YR-CAN 10\*

2-08 2x 365d 35547 4.1 1446 3.4 1195

- 9 VG daughters

- Sons at Semex, Generations & Alta

**Benner Aeroline Jemima** VG-86-CAN 13\*

6-01 2x 365d 47800 4.9 2366 3.3 1594

Life: (3 Lacs) 193901 4.5 8662 3.5 6722

- 2 Superior Lactations

**Benner Luke Jean** VG-86 23\*

2-02 2x 365d 41482 3.7 1550 3.4 1391

- 1 EX & 13 VG daughters

- 1 Superior Lactation

**Benner Grand Julia** VG-87 2\*

2-03 2x 365d 29312 4.4 130 3.3 961

**Benner Blackstar Janet** VG-89 11\*

5-04 2x 365d 42760 4.3 1821 3.3 1398

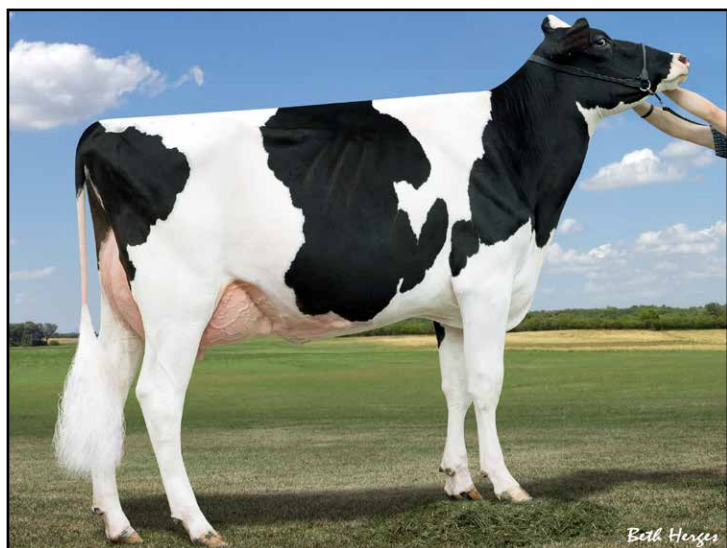
- 3 Superior Lactations

**Caroldale Warden Josey** VG-88-CAN 8\*

9-04 2x 365d 31773 3.9 1241 3.7 1182

- 1 Superior Lactation





**BVK ATWOOD ALEX-ET VG-88 VG-MS  
DAM OF LOT 8**



**BVK ATWOOD ARIANNA VG-89-2YR EX-MS  
FULL SISTER TO DAM OF LOT 8**

8

## FIVE #1 EMBRYOS

- Worldwide Export Available

### Holstein Plaza Contacts:

Steve Mower +1 240-520-5906

Jennifer Dingbaum +1 320-250-2412



### Mr Chassity Gold Chip-ET (SEXED)

140145553 Excellent-90 \*TR \*TV \*TL \*TD  
PTA +211M +23F +0P 94%R 4/14  
PTA +379NM\$ +2.8PL 2.56SCS -.1DPR  
PTA +3.70T +3.31UDC +3.16FLC 89%R  
GTPI +1996G

### BVK Atwood Alex-ET

70476954 Very Good-88 VG-MS @ 2-03  
GTPI+1773 +4.12T +3.19UDC +2.82FLC

Full sisters to Alex

### BVK Atwood Arianna VG-89-2YR

- Nominated All-American Jr 2-Yr-Old 2012
- Unanimous All-Canadian Jr 2-Yr-Old 2012
- 1st Jr 2-Year-Old, Int'l Holstein Show 2012
- 1st Jr 2-Year-Old, Canadian Nat'l Show 2012
- Nom All-American Spring Yearling 2011
- BVK Atwood Abrianna EX-92 (max)
- Reserve All-American Junior 3-Year-Old 2013
- 2nd Junior 3 Year Old, Best B&O WDE 2013
- Grand Champion, Illinois State Fair 2013
- Grand Champ, Illinois Championship 2013
- High seller \$49,000, Impact of Ada Sale

### Braedale Goldwyn

CAN 10705608 GP-CAN EX'05 \*TV \*TL  
PTA -9M +31F +13P 99%R 4/14  
PTA +2.80T +2.45UDC +2.36FLC  
GTPI +1879G

### Regancrest S Chassity-ET

62496899 Excellent-92 EEEVE DOM  
3-10 2x 365d 42280 4.3 1798 2.7 1150  
Life: 1071d 105520 4.2 4383 3.0 3158

### Maple-Downs-I G W Atwood-ET

8956379C Very Good-87 \*TV \*TL \*TY \*TD  
PTA +261M +48F +12P 99%R 12/13  
PTA +4.66T +3.47UDC +3.85FLC 99%R  
GTPI +1932G

### Ms Kingstead Chief Adeen-ET

17302711 Excellent-94 EEEEE 2E DOM  
3-05 2x 310d 30180 4.0 1209 3.4 1020  
Life: 1382d 100760 4.0 4010 3.4 3458

- 2x Member All-American Produce
- Nom All-American Jr 3-Yr Old
- Nom All-American 4-Yr Old
- Dam of 16 VG and 11 EX Offspring

### 3rd Dam

C Aitkenbrae Starbuck Ada EX-94 2E DOM  
13-8 2x 365d 25150 3.0 764 3.2 796

- All-American Produce of Dam 2000
- 1st Eastern Nat'l 3-Yr Old & Grand Ch 1990





MS ATLEES SHOTTLE AUBRY-ET EX-92 EX-MS DOM  
DAM OF LOT 9



MD-DELIGHT DURHAM ATLEE-ET EX-92 DOM  
2ND DAM OF LOT 9

9

**Holstein Plaza Contacts:**

Steve Mower +1 240-520-5906  
Jennifer Dingbaum +1 320-250-2412

**Mr Chassity Colt 45-ET**

70476906 \*RC \*PO \*TV \*TL \*TY  
PTA +1002M +16F +24P 78%R 4/14  
PTA +396NM\$ +3.0PL 2.80SCS +0.2DPR  
PTA +2.99T +2.88UDC +2.80FLC 77%R  
GTPI +2020G

**Ms Atlees Shottle Aubry-ET**

65249841 Excellent-92 EX-MS DOM  
GTPI+1972 +2.98T +2.59UDC +2.67FLC  
2-03 2x 365d 31140 3.7 1148 3.2 1003  
• Only Shottle from Atlee  
• Full sister to AFTERSHOCK  
• Sons to be released soon  
• Maternal sister to Atwood, Delete and more

## FIVE #1 IVF FEMALE EMBRYOS

• Eligible for shipment to the U.S. and export to EU and China

**Sandy-Valley Colt P-Red-TW**

68731810 \*PO \*TV \*TL \*TY \*TD  
PTA +439M -24F +21P 97%R 4/14  
PTA +1.86T +2.17UDC +1.74FLC 92%R  
GTPI +1859G

**Regancrest S Chassity-ET**

62496899 Excellent-92 EEEVE DOM  
3-10 2x 365d 42280 4.3 1798 2.5 1070

**Picston Shottle-ET**

GBR 598172 EX-95 GM 12/11 \*TV \*TL \*TY  
PTA +885M +45F +24P 99%R 4/14  
PTA +2.29T +1.84UDC +1.58FLC  
GTPI +1929G

**MD-Delight Durham Atlee-ET**

131704103 Excellent-92 EEEEE DOM  
3-11 2x 365d 38290 5.5 2091 3.3 1249  
• All-American Sr 3-Yr-Old Cow 2005  
• Res Int Champ, International Show 2005

**3rd thru 5th Dams**

**MD-Delight Strm Amberlee-ET**  
VG-88 DOM

2-02 2x 365d 26170 3.7 969 3.2 835

**Ms Kingstead Chief Adeen-ET**  
EX-94 2E DOM

3-05 2x 310d 30180 4.0 1209 3.4 1020

Life: 1382d 100760 4.0 4010 3.4 3458

• 2x Member All-American Produce

• Nom All-American Jr 3-Yr Old

• Nom All-American 4-Yr Old

• Dam of 16 VG and 11 EX Offspring

**C Aitkenbrae Starbuck Ada EX-94 2E DOM**

13-8 2x 365d 25150 3.0 764 3.2 796

• All-American Produce of Dam 2000

• 1st Eastern Nat'l 3-Yr Old & Grand Ch 1990





**EDG CHRISTA HL 2066-ET**  
DAM OF LOT 10



**LANGS-TWIN-B C-S ASHLYN-ET VG-86-2YR GMD DOM**  
3RD DAM OF LOT 10

**10**

## TWO #1 EMBRYOS

- Worldwide Export Available

### Holstein Plaza Contacts:

Steve Mower +1 240-520-5906

Jennifer Dingbaum +1 320-250-2412

### Woodcrest Mogul Yoder-ET

72254526

PTA +1830M +106F +69P 73%R 4/14

PTA +924NM\$ +5.3PL 2.74SCS +0.7DPR

PTA +3.09T +2.60UDC +2.34FLC 73%R

GTPI +2554G

### EDG Christa HL 2066-ET

72437613

Born: February 25, 2013

GTPI+2332 +1058M +66F +53P +3.15T

### Mountfield SSI Dcy Mogul

3006972816 \*TV \*TL \*TY \*TD

PTA +1377M +79F +49P 78%R 4/14

PTA +2.81T +2.99UDC +2.78FLC 77%R

GTPI+2394G

### Woodcrest Planet Yakara

3008363689 Very Good-85

2-00 3x 305d 27530 3.6 1004 3.3 906

### Seagull-Bay Headliner-ET

69981350 \*TV \*TL \*TY \*TD

PTA +1584M +90F +60P 76%R 12/13

PTA +2.69T +2.00UDC +2.03FLC 75%R

GTPI +2296G

### Langs-Twin-B Christa-ET

66879944

Born: February 21, 2011

GTPI+2213 +1109M +46F +47P +2.95T

- Four daughters over +2300G

### 3rd thru 7th Dams

#### Langs-Twin-B C-S Ashlyn-ET

VG-86-2YR GMD DOM

2-03 2x 65d 30150 4.3 1306 3.4 1020

#### Ralma Finley C-F Chuckle-ET

EX-90 GMD DOM

2-06 2x 365d 38960 3.5 1345 3.5 1365

4-11 2x 365d 34760 3.2 1109 3.3 1162

#### Ralma Christmas Fudge-ET

VG-88 GMD DOM

2-03 2x 365d 31810 4.1 1292 3.2 1027

#### Ralma Juror Faith EX-91 GMD DOM

4-02 2x 365d 47860 4.5 2165 3.1 1497

Life: 1352d 133520 4.5 5986 3.3 4358

#### Ralma Leadman Fashion VG-89

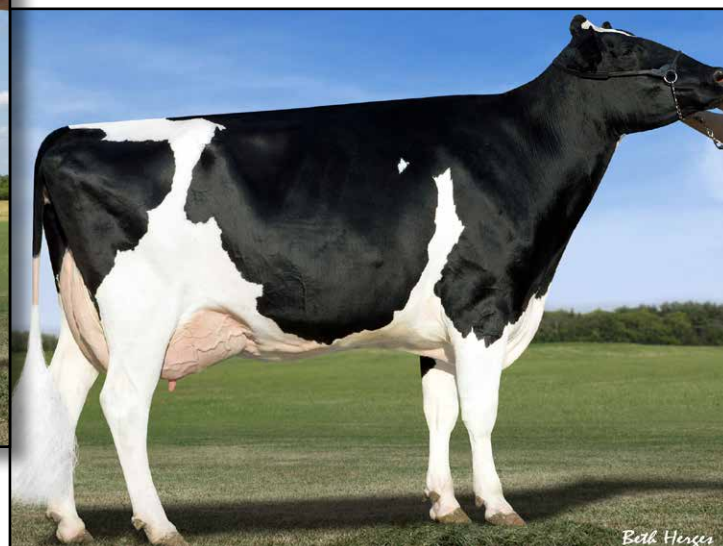
4-10 2x 365d 40710 3.7 1494 3.0 1232

Life: 1243d 117710 3.6 4295 3.2 3743





**KHW SUPER ADERYN VG-85-2YR**  
2ND DAM OF LOT 11



**KHW GOLDWYN AIKO-ET \*RC EX-91 DOM**  
3RD DAM OF LOT 11



## FOUR #1 EMBRYOS

- Worldwide Export Available

### Holstein Plaza Contacts:

Steve Mower +1 240-520-5906

Jennifer Dingbaum +1 320-250-2412

### Woodcrest Mogul Yoder-ET

72254526

PTA +1830M +106F +69P 73%R 4/14

PTA +924NM\$ +5.3PL 2.74SCS +0.7DPR

PTA +3.09T +2.60UDC +2.34FLC 73%R

GTPI +2554G

### Ms Aderyn Shan 2334

72437881 Born June, 14, 2013

GTPI+2321 +3.22T +2.76UDC +2.45FLC

GLPI+3021 Conf.+14

Maternal sister to 2334

### Ms Aderyn Mc Abigail-ET \*RC

GTPI+2382 +668NM\$ +3.54T

- No. 14 GTPI \*RC heifer in the US

### Mountfield SSI Dcy Mogul

3006972816 \*TV \*TL \*TY \*TD

PTA +1377M +79F +49P 78%R 4/14

PTA +2.81T +2.99UDC +2.78FLC 77%R

GTPI+2394G

### Woodcrest Planet Yakara

3008363689 Very Good-85

2-00 3x 305d 27530 3.6 1004 3.3 906

### Ladys-Manor Man-O-Shan

70528492 100%RHA-NA TV TL TY TD

PTA +1766M +84F +64P 77%R 4/14

PTA +2.93T +2.52UDC +1.40FLC 4/14

GTPI +2332G

### KHW Super Aderyn \*RC

140969320 Very Good-85 VG-MS @2-09

2-07 2x 233d 20020 3.9 784 3.6 724 inc.

- Several offspring over +2350G

- One of the highest \*RC cows in the breed

GTPI +2275 and 3.04T (4/14)

### 3rd thru 9th Dams

#### KHW Goldwyn Aiko

EX-91 EEEVE 2\* DOM

5-07 2x 365d 29149 5.1 1499 4.0 1160

- Sister to KHW Regiment Apple Red EX-96

#### Kamps-Hollow Altitude-ET \*RC

EX-95 2E DOM \*CV

7-00 2x 365d 39690 4.7 1849 3.5 1385

Life: 1844d 144460 4.4 6295 3.7 5288

- Red Impact Cow of the Year 2009

- Dam of Advent, Jotan & Acme

#### Clover-Mist Alisha-ET \*RC EX-93 3E DOM

8-07 2x 365d 36920 4.2 1553 3.4 1258

Life: 2999d 226470 4.7 10659 3.6 8149

#### Clover-Mist Augy Star-ET \*RC

EX-94 4E DOM

7-10 3x 365d 43140 5.0 2136 3.3 1421

Life: 2486d 206250 4.7 9793 3.5 7187

#### D-R-A August EX-96 EEEE 4E DOM

8-05 2x 365d 27460 4.3 1187 3.2 871

Life: 3443d 190200 4.4 8281 3.3 4457

- Nominated All-American Aged Cow 1986

#### D-R-A Ideal Precious Leader EX-90 2E

7-06 2x 358d 20090 3.9 787 3.4 675

#### D-R-A Princess Lad Leader EX-90 3E

9-05 2x 305d 19160 4.2 809





**DUCKETT-SA BRAXTON FRAN**  
DAM OF LOT 12



**HARVUE ROY FROSTY EX-97 EX-MS 3E GMD**  
2ND DAM OF LOT 12

12

## FOUR #1 EMBRYOS

• Worldwide Export Available

### Holstein Plaza Contacts:

Steve Mower +1 240-520-5906

Jennifer Dingbaum +1 320-250-2412

### Sonnek GC Corvette-ET

71391400 \*TV \*TL \*TY \*TD

PTA +450M +29F +20P 76%R 4/14

PTA +1.1PL 2.64SCS -0.4DPR

PTA +4.17T +3.15UDC +4.03FLC 76%R

GTPI +2085G

### Duckett-Sa Braxton Fran

70929538

- Will be scored and pictured next month
- Looks fantastic and should be VG-87 or 88

### Mr Chassity Gold Chip-ET

140145553 100%RHA-NA \*TR \*TV \*TL

PTA +211M +23F +0P 94%R 4/14

PTA +3.70T +3.31UDC +3.16FLC 89%R

GTPI +1996G

### Sonnek Damion Charlie-ET

138545776 Excellent-94 EEEEE

3-04 2x 365d 26240 4.0 1050 3.5 992

### Regancrest S Braxton

61898423 EX-95 \*TR \*TV \*TL \*TY \*TD

PTA +1556M +13F +19P 99%R 4/14

PTA +3.70T +1.97UDC +2.30FLC 98%R

GTPI +1521G

### Harvue Roy Frosty

52378753 Excellent-97 EEEEE 3E GMD

5-07 2x 365d 44710 5.0 2222 3.0 1332

6-08 2x 365d 40600 5.3 2154 3.1 1247

3-10 2x 365d 37496 4.5 1679 3.1 1174

2-03 2x 365d 24750 4.2 1043 3.3 815

Life: 1824d 167800 4.8 8097 3.2 5322

### FROSTY!

- Nominated All-American Aged Cow 2012
- Supreme Champ, WDE 2009 & 2010
- All-American Aged Cow 2010
- Grand Champion International Show 2010
- Unanimous All-American 5-Year-Old 2009
- 1st 5-Year-Old, International Show 2009
- All-World & People's Choice 2009
- Unanimous All-Canadian 5-Year-Old 2009
- Res Grand Champ, Royal Winter Fair 2009
- 1st 5-Year-Old, Royal Winter Fair 2009
- All-American Senior 3-Year-Old 2007
- Int & Res Grand Champ, Int'l Show 2007
- 1st Senior 3-Year-Old, Int'l Show 2007
- Nom All-American Senior 2-Year-Old 2006

### 3rd thru 7th Dams

**Harvue Sam Heidi** EX-93 EEEEE 3E DOM

5-07 2x 305d 29640 4.5 1334 2.9 868

Life: 2480d 183870 4.5 8335 3.2 5964

**Harvue Skybuck Harmony** VG-88

2-00 2x 263d 17520 4.4 775 3.4 600

• 2nd Summer Yearling Eastern Nat'l 1994

**Harvue Melvin Hallie** VG-88

4-08 2x 365d 33691 4.4 1490 3.2 1093

**Harvue Bell Harrison** VG-86 GMD DOM

8-11 2x 365d 38040 3.4 1301 3.0 1124

**Harvue Libido Harrison** VG-87

6-00 2x 365d 22359 3.8 842





**MS LICORICE GOLD LEGACY-ET \*RC**  
DAM OF LOT 13



**ROCKYMOUNTAIN TALENT LICORICE EX-95**  
2ND DAM OF LOT 13

13

## THREE #1 EMBRYOS

- Worldwide Export Available

### Holstein Plaza Contacts:

Steve Mower +1 240-520-5906

Jennifer Dingbaum +1 320-250-2412

### Stantons Capital Gain

1169669C

PTA +2374M +94F +70P 74%R 4/14

PTA +760NM\$ + 3.4PL 2.69SCS -0.1DPR

PTA +4.12T +3.26UDC +1.98FLC 73%R

GTPI +2517G

### Ms Licorice Gold Legacy-ET \*RC

72127334

Born: December 2, 2012

### De-Su Bkm McCutchen 1174-ET

69990138 \*TV \*TL \*TY \*TD

PTA +1277M +66F +51P 78%R 4/14

PTA +3.72T +3.36UDC +2.57FLC 78%R

GTPI +2384G

### Ms Chassity Obs Claire-ET

141008075 Very Good-87-2YR-CAN

1-10 3x 365d 43545 3.7 1625 2.9 1263

### Braedale Goldwyn

CAN 10705608 GP-CAN EX'05 \*TV \*TL

PTA -45M +29F +12P 99%R 12/13

PTA +2.82T +2.47UDC +2.36FLC

GTPI +1876G

### Rockymountain Talent Licorice

7990215C Excellent-95-5YR 1\*

3-10 2x 305d 32901 4.0 1310 3.4 1102

2-03 2x 305d 23682 3.3 785 3.3 785

• All Canadian 4-Year-Old & Sr 3-Year-Old

• Int Champion, Royal Winter Fair 2010

• Int Champ, Quebec International 2010

• Res Grand Ch, Quebec International 2010

• HM Grand Ch, Royal Winter Fair 2010

### 3rd thru 5th Dams

**Idee Rudolph Liberty** VG-89-3YR 2\*

5-11 2x 305d 30181 3.4 1021 3.2 968

**Idee Skychief Layota** VG-88-7YR 8\*

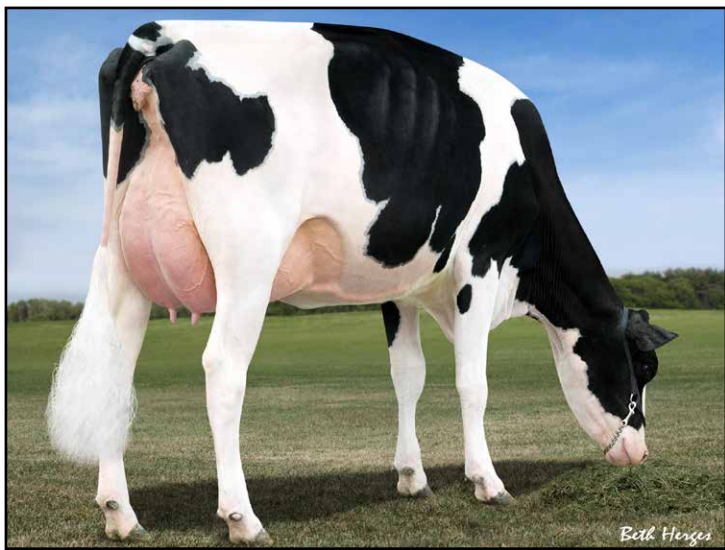
5-07 2x 305d 28195 4.1 1155 3.2 893

**Ravenswell Lydia** EX-92-3YR DOM 19\*

5-01 2x 305d 21475 4.6 922 3.3 714

• Lydia has 14 VG & 6 EX daughters!





**MORSAN MAN D MISSY VG-85-2YR-CAN**  
2ND DAM OF LOT 14



**EASTSIDE LEWISDALE GOLD MISSY EX-95-CAN**  
4TH DAM OF LOT 14

# 14

## TWO #1 EMBRYOS

- Worldwide Export Available

### Holstein Plaza Contacts:

Steve Mower +1 240-520-5906  
Jennifer Dingbaum +1 320-250-2412

### Richmond-FD El Bombero-ET

71637328 \*TR \*TV \*TL \*TY \*TD  
PTA +1988M +93F +58P 73%R 4/14  
PTA +6.8PL 2.54SCS +0.9DPR  
PTA +3.30T +2.68UDC +2.29FLC 73%R  
GTPI +2558G

### Butz-Hill Malarie 2012-ET

72437559 Born: January 31, 2013  
GTPI+2304 +356M +47F +37P +3.16T

### Maternal siblings to Malarie

**Butz-Hill Magicstar-ET**  
GTPI+2460 +716NM\$ +3.51T  
**Ms Edg Missy Pred 57445-ET**  
GTPI+2430 +760NM\$ +3.01T  
**Butz-Hill Megasire-ET**  
GTPI+2567 +867NM\$ +2.91T

### Amighetti Numero Uno-ET

ITA 17990915143 \*TV \*TL \*TY  
PTA +740M +80F +37P 78%R 4/14  
PTA +2.93T +2.82UDC +1.96FLC 77%R  
GTPI +2423G

### Richmond-FD S Barbara-ET

69305043 Very Good-87-2YR  
2-04 3x 233d 21759 3.9 849 2.8 608 inc.

### Sully Hart Meridian-ET

69951907 \*TY  
PTA +1772M +37F +49P 77%R 4/14  
PTA +3.49T +3.04UDC +1.50FLC  
GTPI +2145G

### Morsan Man D Missy-ET

11099278C Very Good-85 @ 2-06  
GTPI+2209 +136M +66F +40P +2.71T  
• Dam of MEGASIRE GTPI+2567 +2.91T  
• 4 offspring over GTPI+2400

### GOLD MISSY!

- Holstein Canada Cow of the Year 2012
- 1st Longtime Prod. Royal Winter Fair 2013
- Supreme Champ, Royal Winter Fair 2011
- Grand Champ, Royal Winter Fair 2011
- Supreme Champ, World Dairy Expo 2011
- Grand Champ, Int'l Holstein Show 2011
- Sold for 1.2 Million, Morsan Sale 2009
- All-American Junior 3-Yr Old 2009
- Res Intermediate Champ, WDE 2009
- All-American Junior 2-Yr Old 2008
- All-Canadian Junior 2-Yr Old 2008

### 3rd thru 6th Dams

**Valleyville Dolman Missy VG-89 EX-MS**  
2-03 2x 365d 34480 4.0 1391 3.5 1215

**Eastside Lewisdale Gold Missy**  
EX-95-CAN 3\*

5-00 2x 315d 36480 4.2 1532 3.2 1164

**Stadacona Outside Abel**

VG-88-4YR-CAN 32\*

3-03 2x 365d 36599 4.6 1695 3.0 1093

• Canadian Cow of the Year Finalist 2011

• HM All-Atlantic Winter Yearling 2001

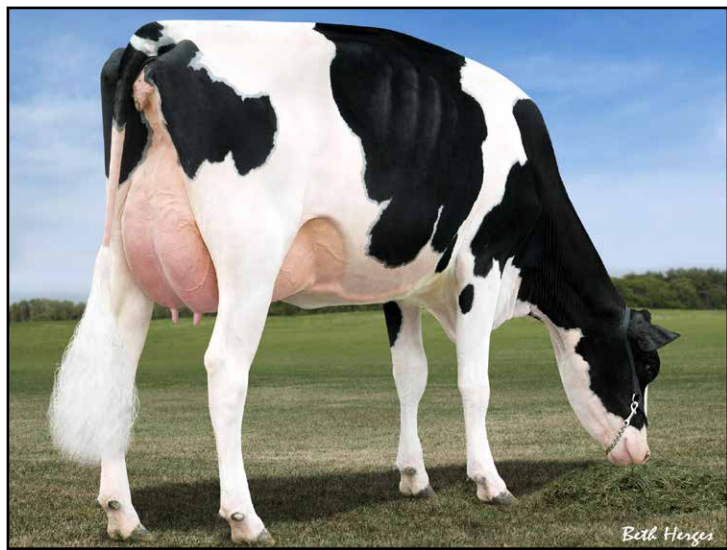
• 1st Winter Calf, Drummond Show 2000

**Stadacona Progress Anibel VG-85-CAN 2\***

4-03 2x 365d 38186 3.4 1312 3.2 1208

Life (8 Lacs): 266137 3.4 9034 3.1 8311





**MORSAN MAN D MISSY VG-85-2YR-CAN**  
2ND DAM OF LOT 15



**EASTSIDE LEWISDALE GOLD MISSY EX-95-CAN**  
4TH DAM OF LOT 15

# 15

## FIVE #1 EMBRYOS

- Worldwide Export Available

### Holstein Plaza Contacts:

Steve Mower +1 240-520-5906  
Jennifer Dingbaum +1 320-250-2412

### Kerndtway Eraser P-ET

69502427\*TR \*PC \*TY  
PTA +1686M +78F +67P 73%R 4/14  
PTA +740NM\$ +4.9PL 2.88SCS +0.4DPR  
PTA +2.98T +2.37UDC +2.14FLC 71%R  
GTPI +2396G

### Butz-Hill Malarie 2012-ET

72437559 Born: January 31, 2013  
GTPI+2304 +356M +47F +37P +3.16T

### Maternal siblings to Malarie

**Butz-Hill Magicstar-ET**  
GTPI+2460 +716NM\$ +3.51T  
**Ms Edg Missy Pred 57445-ET**  
GTPI+2430 +760NM\$ +3.01T  
**Butz-Hill Megasire-ET**  
GTPI+2567 +867NM\$ +2.91T

### Da-So-Burn MOM Earnhardt P

68972328 VG-86 \*TR \*PO \*TV \*TY \*TD  
PTA +1391M +70F +68P 76%R 4/14  
PTA +1.96T +1.17UDC +1.65FLC 75%R  
GTPI +2163G

### Golden-Oaks Obsrvr Dixie-ET

69823260 Very Good-85 DOM  
2-00 2x 305d 22590 4.0 897 3.1 706

### Sully Hart Meridian-ET

69951907 \*TY  
PTA +1772M +37F +49P 77%R 4/14  
PTA +3.49T +3.04UDC +1.50FLC  
GTPI +2145G

### Morsan Man D Missy-ET

11099278C Very Good-85 @ 2-06  
GTPI+2209 +136M +66F +40P +2.71T  
• Dam of MEGASIRE GTPI+2567 +2.91T  
• 4 offspring over GTPI+2400

### GOLD MISSY!

- Holstein Canada Cow of the Year 2012
- 1st Longtime Prod. Royal Winter Fair 2013
- Supreme Champ, Royal Winter Fair 2011
- Grand Champ, Royal Winter Fair 2011
- Supreme Champ, World Dairy Expo 2011
- Grand Champ, Int'l Holstein Show 2011
- Sold for 1.2 Million, Morsan Sale 2009
- All-American Junior 3-Yr Old 2009
- Res Intermediate Champ, WDE 2009
- All-American Junior 2-Yr Old 2008
- All-Canadian Junior 2-Yr Old 2008

### 3rd thru 6th Dams

**Valleyville Dolman Missy VG-89 EX-MS**  
2-03 2x 365d 34480 4.0 1391 3.5 1215

**Eastside Lewisdale Gold Missy**  
EX-95-CAN 3\*

5-00 2x 315d 36480 4.2 1532 3.2 1164

**Stadacona Outside Abel**

VG-88-4YR-CAN 32\*

3-03 2x 365d 36599 4.6 1695 3.0 1093

• Canadian Cow of the Year Finalist 2011

• HM All-Atlantic Winter Yearling 2001

• 1st Winter Calf, Drummond Show 2000

**Stadacona Progress Anibel VG-85-CAN 2\***

4-03 2x 365d 38186 3.4 1312 3.2 1208

Life (8 Lacs): 266137 3.4 9034 3.1 8311





**EASTSIDE LEWISDALE MISSY VG-87-3YR  
DAM OF LOT 16**



**EASTSIDE LEWISDALE GOLD MISSY EX-95-CAN  
MATERNAL SISTER TO DAM OF LOT 16**

**16**

## FOUR #1 EMBRYOS

- Worldwide Export Available

### Holstein Plaza Contacts:

Steve Mower +1 240-520-5906  
Jennifer Dingbaum +1 320-250-2412

### Braedale Goldwyn

CAN 10705608 GP-CAN EX'05 \*TV \*TL  
PTA -9M +31F +13P 99%R 4/14  
PTA +312NM\$ +0.7PL 2.66SCS -0.1DPR  
PTA +2.80T +2.45UDC +2.36FLC  
GTPI +1879G

### Eastside Lewisdale Missy

9900348C Very Good-87-3YR VG-87-MS  
3-07 2x 244d 25139 4.3 1089 3.3 811 inc.  
2-01 2x 365d 25355 4.3 1082 3.3 831

### Maternal sister to Missy

**Eastside Lewisdale Gold Missy EX-95-CAN**  
5-00 2x 315d 36480 4.2 1532 3.2 1164  
• Holstein Canada Cow of the Year 2012

### Shoremar James

5902195C GP-81-CAN GM 2/04 \*TV \*TL  
PTA -647M +6F +4P 99%R 4/14  
PTA +.65T +.62UDC +.22FLC  
GTPI +1223G

### Braedale Baler Twine

6860888C Very Good-86-CAN 29\*  
2-01 2x 365d 30906 4.9 1521 3.4 1052

### Picston Shottle-ET

GBR 598172 EX-95 GM 12/11 \*TV \*TL \*TY  
PTA +885M +45F +24P 99%R 4/14  
PTA +2.29T +1.84UDC +1.58FLC  
GTPI +1929G

### Stadacona Outside Abel

8077661C Very Good-88-4YR-CAN 32\*  
3-03 2x 365d 36599 4.6 1695 3.0 1093  
4-06 2x 365d 34035 4.3 1448 2.9 1003  
2-02 2x 330d 22240 3.4 752 3.1 686  
• Canadian Cow of the Year Finalist 2011  
• HM All-Atlantic Winter Yearling 2001  
• 1st Winter Calf, Drummond Show 2000

### GOLD MISSY!

- Holstein Canada Cow of the Year 2012
- 1st Longtime Prod. Royal Winter Fair 2013
- Supreme Champ, Royal Winter Fair 2011
- Grand Champ, Royal Winter Fair 2011
- Supreme Champ, World Dairy Expo 2011
- Grand Champ, Int'l Holstein Show 2011
- Sold for 1.2 Million, Morsan Sale 2009
- All-American Junior 3-Yr Old 2009
- Res Intermediate Champ, WDE 2009
- All-American Junior 2-Yr Old 2008
- All-Canadian Junior 2-Yr Old 2008

### 3rd Dam

**Stadacona Progress Anibel VG-85-CAN 2\***  
4-03 2x 365d 38186 3.4 1312 3.2 1208  
Life (8 Lacs): 266137 3.4 9034 3.1 8311





**KINGSMILL ANNAPOLIS-ET EX-92-CAN  
DAM OF LOT 17**



## FIVE #1 EMBRYOS

• *Worldwide Export Available*

### **Holstein Plaza Contacts:**

Steve Mower +1 240-520-5906  
Jennifer Dingbaum +1 320-250-2412

### **Braedale Goldwyn**

CAN 10705608 GP-CAN EX'05 \*TV \*TL  
PTA -9M +31F +13P 99%R 4/14  
PTA +312NM\$ +0.7PL 2.66SCS -0.1DPR  
PTA +2.80T +2.45UDC +2.36FLC  
GTPI +1879G

### **Kingsmill Annapolis-ET**

66605300 Excellent-92-CAN 92-MS  
4-06 2x 207d 20055 3.6 776 3.3 619 inc.  
3-03 2x 297d 20185 3.4 692 3.4 683  
2-03 2x 313d 16861 3.4 571 3.3 558

### **Shoremar James**

5902195C GP-81-CAN GM 2/04 \*TV \*TL  
PTA -647M +6F +4P 99%R 4/14  
PTA +.65T +.62UDC +.22FLC  
GTPI +1223G

### **Braedale Baler Twine**

6860888C Very Good-86-CAN 29\*  
2-01 2x 365d 30906 4.9 1521 3.4 1052

### **Regancrest Elton Durham-ET**

2250783 EX-90 GM 8/01 \*TR \*CV \*TL  
PTA -263M -33F +5P 99%R 4/14  
PTA +2.45T +2.17UDC +2.07FLC  
GTPI +1568G

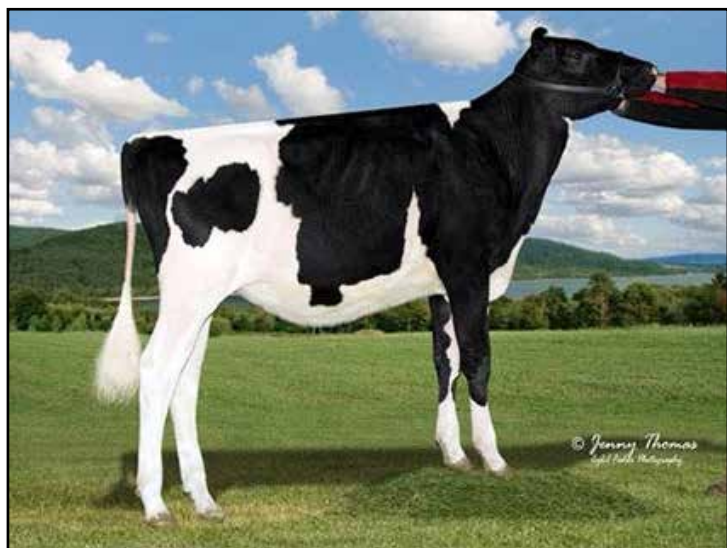
### **Beatyview Aspen Annika-ET**

64168812 Very Good-86-2YR  
3-08 2x 365d 31050 3.7 1164 3.3 1021  
2-03 2x 365d 28060 4.0 1135 3.4 941

### **3rd thru 7th Dams**

**MD-Maple-Dell J Ashley-ET** EX-93 2E  
4-04 2x 365d 34469 4.5 1556 3.1 1065  
**Ms M-M-D Nobel Aruba** EX-94 2E DOM  
3-05 2x 365d 34539 4.3 1479 3.3 1144  
**MD-Delight Storm Adeline** VG-88 DOM  
2-01 2x 365d 25340 4.6 1175 3.6 910  
**Ms Kingstead Chief Adeen-ET**  
EX-94 2E DOM  
3-05 2x 310d 30180 4.0 1209 3.4 1020  
Life: 1382d 100760 4.0 4010 3.4 3458  
• *2x Member All-American Produce*  
• *Nom All-American Jr 3-Yr Old*  
• *Nom All-American 4-Yr Old*  
• *Dam of 16 VG and 11 EX Offspring*  
**C Aitkenbrae Starbuck Ada** EX-94 2E DOM  
13-8 2x 365d 25150 3.0 764 3.2 796  
• *All-American Produce of Dam 2000*  
• *1st Eastern Nat'l 3-Yr Old & Grand Ch 1990*





MS TARA GC TAHITI  
DAM OF LOT 18



WERRCROFF GOLDWYN TARA EX-93  
2ND DAM OF LOT 18

18

## FIVE #1 EMBRYOS

• Worldwide Export Available

### Holstein Plaza Contacts:

Steve Mower +1 240-520-5906

Jennifer Dingbaum +1 320-250-2412



### De-Su Bkm McCutchen 1174-ET

69990138 \*TV \*TL \*TY \*TD  
PTA +1277M +66F +51P 78%R 4/14  
PTA +655NM\$ +3.6PL 2.81SCS +0.4DPR  
PTA +3.72T +3.36UDC +2.57FLC 78%R  
GTPI +2384G

### Ms Tara GC Tahiti

72127503 Born, March, 3, 2013

- All-New York Spring Calf 2013
- Two sisters by Sanchez scored VG-87-2YR

### De-Su 521 Bookem-ET

66636657 \*TR \*TV \*TL \*TY \*TD  
PTA +1585M +49F +61P 99%R 4/14  
PTA +2.62T +2.14UDC +1.64FLC 97%R  
GTPI +2279G

### Sully Shottle May-TW

138218285 Excellent-90 EEEEE DOM  
5-04 2x 365d 38970 3.5 1354 3.1 1226

### Mr Chassity Gold Chip-ET

140145553 100%RHA-NA \*TR \*TV \*TL  
PTA +211M +23F +0P 94%R 4/14  
PTA +3.70T +3.31UDC +3.16FLC 89%R  
GTPI +1996G

### Werrcroft Goldwyn Tara

7772421 Excellent-93 EEEEE @5-02  
2-06 2x 365d 21128 3.9 826 2.9 610  
• Nom. All-American 5-Year-Old 2011  
• Nom. All-Canadian 5-Year-Old 2011  
• 4th 5-Year-Old, World Dairy Expo 2011  
• 6th 5-Year-Old, Royal Winter Fair 2011  
• 3rd Junior 3-Year-Old, Quebec Spring 2009

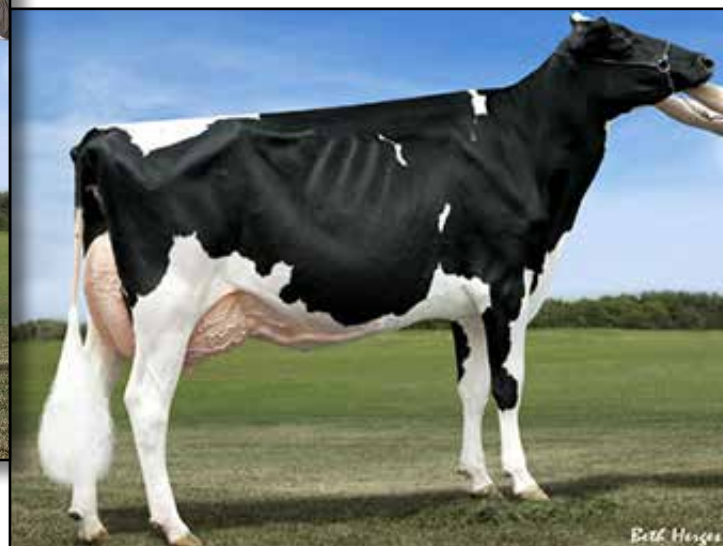
### 3rd thru 8th Dams

Werrcroft Igniter Tabitha GP-83-2YR  
2-05 2x 315d 20026 3.8 767 3.1 623  
Werrcroft Progress Tessa VG-86-3YR-CAN  
4-10 2x 365d 26616 3.9 1032 3.0 789  
Werrcroft Lindy Tamara GP-84  
6-04 2x 365d 29487 4.8 1404 3.3 966  
Life: 5 Lact. 102349 4.6 4722 3.3 3373  
Werrcroft Johanna Tammy VG-85  
10-03 2x 308d 23305 3.8 882 3.1 716  
Werrcroft Marquis Taffy EX-90 2\*  
8-09 2x 334d 21755 4.2 922  
Alflo Princess Sovereign Pontiac EX-CAN  
6-04 2x 365d 26962 4.0 1082





**MS DEB GOLD CHIP DINA-ET**  
DAM OF LOT 19



**EASTRIVER GOLD DEB 850 EX-92 2E**  
2ND DAM OF LOT 19

# 19

## THREE #1 EMBRYOS

• Worldwide Export Available

### Holstein Plaza Contacts:

Steve Mower +1 240-520-5906

Jennifer Dingbaum +1 320-250-2412



### De-Su Bkm McCutchen 1174-ET

69990138 \*TV \*TL \*TY \*TD

PTA +1277M +66F +51P 78%R 4/14

PTA +655NM\$ +3.6PL 2.81SCS +0.4DPR

PTA +3.72T +3.36UDC +2.57FLC 78%R

GTPI +2384G

### Ms Deb Gold Chip Dina-ET

72127567

Born: June 7, 2013

### De-Su 521 Bookem-ET

66636657 \*TR \*TV \*TL \*TY \*TD

PTA +1585M +49F +61P 99%R 4/14

PTA +2.62T +2.14UDC +1.64FLC 97%R

GTPI +2279G

### Sully Shottle May-TW

138218285 Excellent-90 EEEEE DOM

5-04 2x 365d 38970 3.5 1354 3.1 1226

### Mr Chassity Gold Chip-ET

140145553 100%RHA-NA \*TR \*TV \*TL

PTA +211M +23F +0P 94%R 4/14

PTA +3.70T +3.31UDC +3.16FLC 89%R

GTPI +1996G

### Eastriver Gold Deb 850

10822640 Excellent-92 EEVEE 2E @ 4-01

1-11 2x 365d 24632 4.4 1096 3.3 808

• Grand Champ, Midwest Spring Nat'l 2013

• HM Int Champion, NY Spring Int'l 2013

• Res All-American Milking Yearling 2011

• Res All-Canadian Milking Yearling 2011

• Junior Champion Atlantic Summer 2010

### 3rd thru 10th Dams

**Homestead Astronomical Deb** EX-95-3E

5-09 2x 365d 34665 3.8 1314 3.4 1171

• 3rd 5-Yr-Old Atlantic Summer Show 2010

• Res Jr Champ, Atlantic Summer Show 2005

**Homestead Debbie Approval** VG-86-3YR

4-05 2x 365d 25648 3.2 820 3.1 783

**Homestead Skychief Delsie** VG-87-4YR

7-02 2x 365d 27923 3.9 1080 3.1 860

Life (8 Lacs): 195308 3.8 7465 3.1 6085

**Homestead Lincoln Danae** GP-81 1\*

7-01 2x 365d 27227 4.7 1276 3.6 977

Life (7 Lacs): 147256 4.7 6905 3.5 5218

**Homestead Debbie Brent** VG-86

Life (7 Lacs): 135118 4.0 5340 3.6 4817

**Homestead Lucky Paula** GP-80-CAN

Life (6 Lacs): 106685 3.4 3653

**Homestead Empress Pear** EX-90-CAN

Life (7 Lacs): 144624 4.0 5756

**Homestead Rockman Gem** VG-CAN 3\*

Life (7 Lacs): 134816 3.9 5216





**EDG DOMINIQUE 2173-ET**  
DAM OF LOT 20



**LADYS-MANOR ALLANAS DORA EX-93 DOM**  
3RD DAM OF LOT 20

**20**

## THREE #1 EMBRYOS

• Worldwide Export Available

### Holstein Plaza Contacts:

Steve Mower +1 240-520-5906

Jennifer Dingbaum +1 320-250-2412

**SEXED**  
semen

### Butz-Hill Megasire-ET (SEXED)

71088720 \*TV \*TL \*TY \*TD

PTA +1316M +86F +61P 73%R 4/14

PTA +5.4PL 2.70SCS +1.7DPR

PTA +2.91T +2.77UDC +2.73FLC 72%R

GTPI +2537G / DGV-GLPI +3387

### EDG Dominique 2173-ET

72437720 Born: April 13, 2013

GTPI+2255 +1232M +68F +36P +3.37T

### Seagull-Bay Supersire-ET

69981349 \*TV \*TL \*TY \*TD

PTA +2434M +111F +78P 76%R 4/14

PTA +2.40T +1.71UDC +1.28FLC 76%R

GTPI +2420G

### Morsan Man D Missy-ET

69320673 Very Good-85

2-04 2x 305d 20450 5.5 1124 3.7 760

### S-S-I Domain Lithium-ET

3004672704 \*TR \*TV \*TL \*TY \*TD

PTA +1182M +38F +39P 76%R 4/14

PTA +1.99T +1.93UDC +1.72FLC 77%R

GTPI +2148G

### Ladys-Manor Dominique-ET

70189445

GTPI+2134 +667M +60F +23P +3.55T

• Looks great, scored next month

### 3rd thru 13th Dams

**Ladys-Manor Allanas Dora EX-93 DOM**

3-07 2x 365d 40640 4.4 1780 3.3 1360

**Ms Durchan Lady Allana EX-95 2E EEEEE**

3-07 2x 365d 40850 4.4 1793 3.3 1349

Life: 1351d 126420 4.2 5362 3.4 4305

• All-American Sr. Milking Yrlg 2007

• 1st Sr. Milking Yrlg World Dairy Expo 2007

• 1st Sr. Milking Yrlg Eastern Fall Nat 2007

**Coldsprings Dur Chan 109 EX-95 2E DOM**

6-04 2x 365d 41850 4.3 1784 3.3 1371

Life: 1423d 130510 3.6 4695 3.3 5064

• Res All-American Aged Cow 2007

• HM All-American 5-Year-Old 2005

• All-American 4-Year-Old 2004

**C Bermaska Starbuck Chancel VG-89 DOM**

2-07 2x 365d 28400 4.3 1230 3.5 999

• All-American Senior 2-Year-Old 1992

• All-American Senior Yearling Heifer 1991

**Donaco Enhancer Cheryl VG-87-CAN**

7-02 2x 305d 21462 4.8 1021 3.5 743

**Danaco Apache Chanda VG-86**

4-11 2x 322d 19160 4.3 829 3.5 670

**Danaco Elevation Candace VG-86**

Life: 2564d 185599 3.7 6834

**Davis-Farm Maple Cindy EX-90 GMD**

5-03 2x 365d 23849 3.7 871

**Davis-Farm Heritage Candace EX-90 EEEV**

2-06 2x 305d 12060 3.7 445

**Davis-Farm Model Lena VG-85**

4-02 2x 305d 14060 4.1 582

**Maview Candace Pilot EX-91 VEEE**

Life: 3139d 151504 3.9 5825





MS EMILY EMARION-ET  
DAM OF LOT 21



TRAMILDA-N BAXTER EMILY-ET VG-85-2YR-CAN  
2ND DAM OF LOT 21

21

## FIVE #1 EMBRYOS

- Worldwide Export Available

### Holstein Plaza Contacts:

Steve Mower +1 240-520-5906  
Jennifer Dingbaum +1 320-250-2412

### Woodcrest Mogul Yoder-ET

72254526  
PTA +1830M +106F +69P 73%R 4/14  
PTA +924NM\$ +5.3PL 2.74SCS +0.7DPR  
PTA +3.09T +2.60UDC +2.34FLC 73%R  
GTPI +2554G

### Ms Emily Emarion-ET

72406164 Born: January, 8, 2013  
GTPI+2284 +1385M +87F +50P +2.43T

### Mountfield SSI Dcy Mogul

3006972816 \*TV \*TL \*TY \*TD  
PTA +1377M +79F +49P 78%R 4/14  
PTA +2.81T +2.99UDC +2.78FLC 77%R  
GTPI+2394G

### Woodcrest Planet Yakara

3008363689 Very Good-85  
2-00 3x 305d 27530 3.6 1004 3.3 906

### Seagull-Bay Supersire-ET

69981349 \*TV \*TL \*TY \*TD  
PTA +2434M +111F +78P 76%R 4/14  
PTA +2.40T +1.71UDC +1.28FLC 76%R  
GTPI +2420G

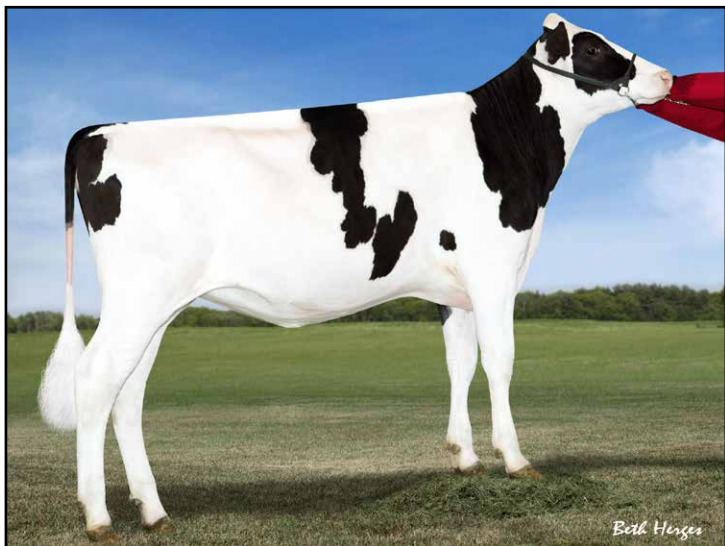
### Tramilda-N Baxter Emily

139232811 VG-85-2YR-CAN VG-MS  
GTPI+2141 +969M +60F +30P +2.18T  
2-05 2x 282d 30946 4.2 1287 3.2 1001  
• Full sister to Tramilda-N Escalade  
• Dam to Emmett, Epic and Highway

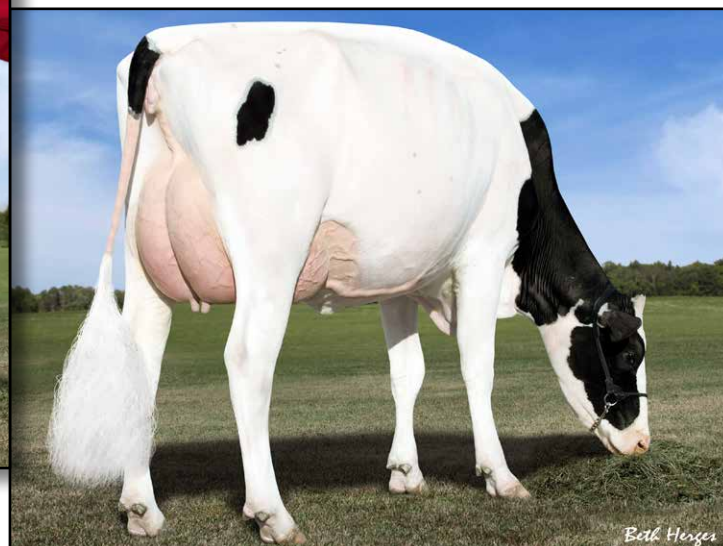
### 3rd thru 13th Dams

**Wabash-Way Evett-ET** VG-86 DOM  
2-02 2x 365d 34187 4.9 1660 3.1 1046  
**Crockett-Acres Elita-ET** VG-87 DOM  
2-02 2x 365d 39010 3.8 1480 3.5 1383  
**Crockett -Acres Mtot Elly-ET**  
EX-90 EX-MS GMD DOM  
6-04 2x 283d 38840 3.3 1286 3.4 1302  
**Wauregan Rudolph Ellymae-ET** EX-90  
4-06 3x 365d 40210 3.6 1455 3.4 1375  
**Whittier-Farms Lead Mae-ET**  
EX-95 3E GMD  
8-07 3x 357d 41270 4.8 1962 3.5 1440  
Life: 1613d 126960 4.3 5473 3.6 4597  
**Raymau Bstar Monica-ET** VG-89 DOM  
2-01 2x 146d 12280 3.8 471 3.3 405  
**Juniper Jason Maria** VG-87 EX-MS DOM  
2-03 2x 365d 20260 4.3 868 3.6 736  
**JDM-Pride Valiant Maggie**  
EX-91 GMD DOM  
6-00 2x 365d 35540 4.1 1441 3.3 1186  
Life: 1666d 119120 4.2 5002 3.6 4281  
**La-Ko-Land Penstate Sadie**  
VG-87 GMD DOM  
8-03 2x 336d 24420 3.3 818 3.2 781  
Life: 2480d 166909 3.5 5732 3.2 2854  
**La-Ko-Land Bootmaker Sally** VG-86  
5-10 2x 365d 24450 4.1 1010  
**La-Ko-Land Monitor Nancy** EX-90  
10-11 3x 320d 19670 3.1 619  
Life: 2381d 145490 3.0 4442





DYMENTHOLM SUNVIEW SASSY-ET \*RC  
MATERNAL SISTER OF LOT 22



DES-Y-GEN PLANET SILK-ET \*RC EX-90  
DAM OF LOT 22

22

## SIX #1 EMBRYOS

• Worldwide Export Available

### Holstein Plaza Contacts:

Steve Mower +1 240-520-5906

Jennifer Dingbaum +1 320-250-2412

### Mr Ansly Addiction-P-Red-ET

72128091 \*TV

PTA -457M +36F +21P 73%R 4/14

PTA +629NM\$ +5.3PL 2.55SCS +1.9DPR

PTA +3.36T +3.77UDC +1.86FLC 72%R

GTPI +2255G

### Des-Y-Gen Planet Silk-ET \*RC \*TY

106109413C Excellent-90 92-MS @ 4-03

GTPI+2076 +1215M +80F +38P +1.98T

2-02 2x 365d 29990 4.5 1351 3.2 960

• #14 GTPI \*RC Cow, Locator List 4/14

• Nominated HI Global Red Impact Cow

• Dam of Sympatico, Seneca and Stoic

• Dam to

### Dymenthholm Sunview Sassy-ET \*RC

GTPI+2436 +845NM\$ +2.88T

### Josey-LLC Uno Sangaria-ET \*RC

GTPI+2386 +769NM\$ +3.34T

### Tiger-Lily Ladd P-Red-ET

69405976 \*B/R \*TV \*TL \*TY

PTA -48M +30F +29P 76%R 4/14

PTA +3.20T +2.80UDC +2.23FLC

GTPI +2170G

### Ms Apples Ainsley-ET \*RC

69822262 Very Good-86 VG-MS @ 2-09

2-04 2x 180d 14680 4.5 667 3.2 470 inc.

### Ensenada Taboo Planet

60597003 EX-90 \*TV \*TR \*TL \*TY \*TD

PTA +2105M +63F +62P 99%R 4/14

PTA +1.73T +1.27UDC -0.56FLC 99%R

GTPI +2073G

### Gen-I-Beq Bolton Silence \*RC

104862615C Very Good-85-2YR-CAN

2-04 2x 365d 30002 4.6 1391 3.6 1069

4-09 2x 365d 29107 4.1 1184 3.5 1027

### 3rd thru 11th Dams

**Gen-I-Beq Goldwyn Secret** VG-87-CAN 7\*

5-05 2x 365d 30573 4.5 1389 3.4 1038

**Gen-I-Beq Durham Sherry** VG-87-CAN 8\*

5-02 2x 365d 40036 3.9 1574 3.2 1268

**Glen Drummond Splendor**

VG-86-2YR-CAN 37\*

4-10 2x 314d 26510 4.2 1124 3.2 840

**Glen Drummond Aero Flower**

VG-88-CAN 18\*

2-03 2x 326d 25622 4.0 1032 3.4 882

**Glen Drummond Shower** EX-CAN 13\*

4-10 2x 365d 28583 4.8 1380 3.6 1016

**Glen Drummond S C Jo Beth**

EX-2E-CAN 7\*

Life (6 Lacs): 141637 4.2 5994 3.2 3593

• Grand Champion Brant-Wentworth 1984

**Glen Drummond Matt Beth** VG-85 4\*

11-10 2x 365d 25038 3.7 935

Life (5 Lacs): 105953 4.1 4295

**Glen Drummond Marquis Beth** VG-CAN

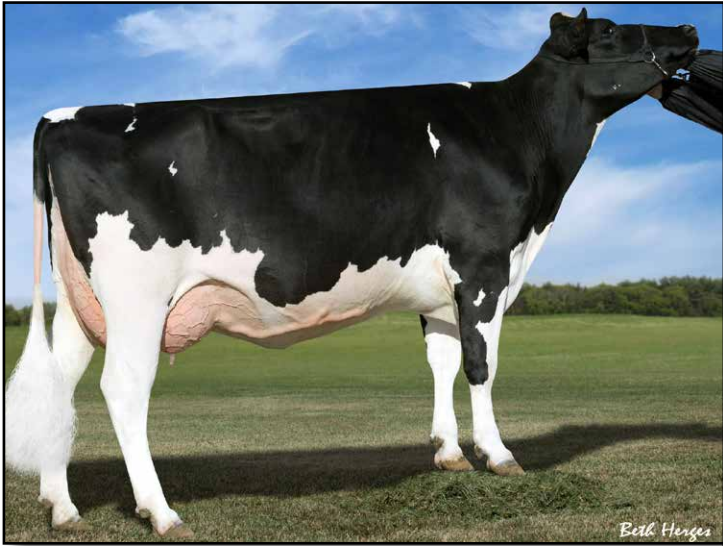
Life (8 Lacs): 112688 4.2 4766

**Ferglynn Rag Apple Bertha** VG-CAN 3\*

7-00 2x 365d 27796 4.7 1303

Life (9 Lacs): 208857 4.0 8344





**LARCREST CREDIT VG-85 DOM**  
DAM OF LOT 23



**LARCREST COMET-ETS VG-87 DOM**  
2ND DAM OF LOT 23

**23**

## FOUR #1 EMBRYOS

- *Worldwide Export Available*

### Holstein Plaza Contacts:

Steve Mower +1 240-520-5906  
Jennifer Dingbaum +1 320-250-2412

### Morningview Mcc Kingboy-ET

72044077 \*TV \*TL \*TY \*TD  
PTA +1927M +72F +63P 74%R 4/14  
PTA +846NM\$ +6.1PL 2.74SCS +1.8DPR  
PTA +3.92T +3.09UDC +2.85FLC 74%R  
GTPI +2602G

### Larcrest Credit-ET

56265392 Very Good-85 @ 2-11  
GTPI+2221 +1927M +73F +56P +2.05T  
2-06 2x 181d 18774 3.7 649 3.3 615 inc.

### De-Su Bkm McCutchen 1174-ET

69990138 \*TV \*TL \*TY \*TD  
PTA +1277M +66F +51P 78%R 4/14  
PTA +3.72T +3.36UDC +2.57FLC 78%R  
GTPI +2384G

### Morningview Super Megan

68654508 Very Good-85 VG-MS  
2-01 3x 280d 22539 3.7 823 3.1 695 inc.

### Badger-Bluff Fanny Freddie

60996956 \*TV \*TL \*TY \*TD  
PTA +1223M +51F +40P 99%R 4/14  
PTA +1.51T +1.53UDC +2.54FLC  
GTPI +2239G

### Larcrest Comet-ETS

53766363 Very Good-87 DOM @ 3-01  
GTPI+2076 +1441M +93F +51P +2.20T  
2-02 2x 305d 28190 4.3 1205 3.3 921  
• 10 daughters over +2300G  
• Full sister to Larcrest Cancun at ABS  
• Full sister to O-Cosmopolitan

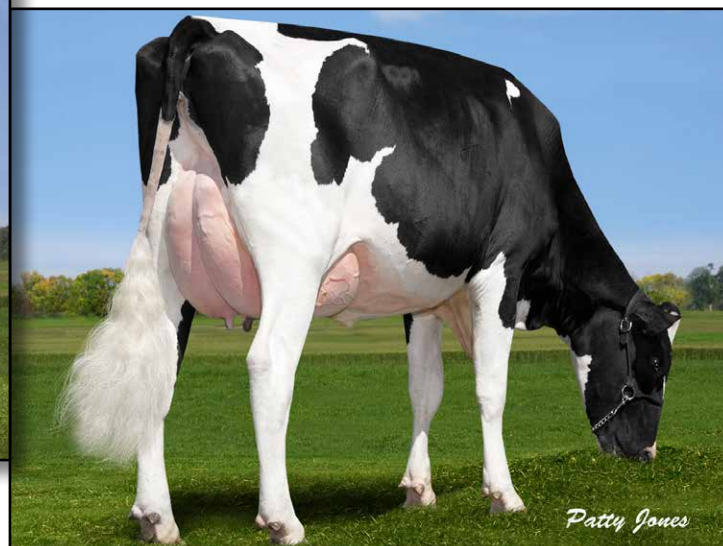
### 3rd thru 6th Dams

**Larcrest Cosmopolitan VG-87 DOM**  
2-04 2x 365d 30930 4.1 1261 3.6 1119  
**Larcrest Oside Champagne-TW**  
EX-90 GMD DOM  
2-03 2x 365d 29110 4.5 1322 3.7 1077  
• 17 sons in A.I. worldwide  
**Larcrest Juror Chanel EX-93 3E GMD DOM**  
9-00 2x 365d 48460 4.0 1943 3.4 1648  
Life: 2899d 245420 4.3 10482 3.6 8866  
**Larcrest Lindy Chandra VG-85**  
2-05 2x 365d 20896 4.8 993 3.8 803  
**Larcrest Inspiration Carly VG-87**  
3-05 2x 305d 21800 4.5 973 3.3 802





**GENERVATIONS LOLAS SNOWPEA GP-83**  
DAM OF LOT 24



**GENERVATIONS MOM LOLA VG-86-2YR-CAN**  
2ND DAM OF LOT 24

**24**

## FOUR #1 EMBRYOS

• Worldwide Export Available

### Holstein Plaza Contacts:

Steve Mower +1 240-520-5906

Jennifer Dingbaum +1 320-250-2412

### Morningview Mcc Kingboy-ET

72044077 \*TV \*TL \*TY \*TD

PTA +1927M +72F +63P 74%R 4/14

PTA +846NM\$ +6.1PL 2.74SCS +1.8DPR

PTA +3.92T +3.09UDC +2.85FLC 74%R

GTPI +2602G

### Genervations Lolas Snowpea

11347875 Good Plus-83-2YR VG-MS

GTPI+2048 +1688M +45F +68P +2.99T

GLPI +2884 / Conf. +13

### De-Su Bkm McCutchen 1174-ET

69990138 \*TV \*TL \*TY \*TD

PTA +1277M +66F +51P 78%R 4/14

PTA +3.72T +3.36UDC +2.57FLC 78%R

GTPI +2384G

### Morningview Super Megan

68654508 Very Good-85 VG-MS

2-01 3x 280d 22539 3.7 823 3.1 695 inc.

### Flevo Genetics Snowman-ET

388965513NLD \*TV \*TL

PTA +2417M +77F +72P 96%R 4/14

PTA +2.70T +1.83UDC +2.16FLC 95%R

GTPI +2188G

### Genervations MOM Lola

10963288C Very Good-86-2YR-CAN

GLPI+2762 / Conf+12 / Milk+1320

2-00 2x 365d 30669 3.8 1162 3.2 994

### 3rd thru 7th Dams

Calbrett Toystory Lil N.C.

Lylehaven Lila Z EX-94-CAN 11\*

4-05 2x 365d 49101 4.0 1960 3.5 1695

Life (3 Lacs): 166194 3.9 6504 3.4 5701

• HM All-Canadian 5-Year-Old 2007

• HM All-Canadian 4-Year-Old 2006

• All-Canadian Jr 2-Yr-Old Cow 2004

Lylehaven Form Laura-ET EX-94 3E

6-02 2x 365d 35510 4.2 1484 3.1 1088

• HHM All-American Four-Year-Old 2003

• Res All-Canadian Jr 3-Year-Old 2002

Thiersant Lili Starbuck-ET EX-94 4E

9-11 2x 365d 30910 4.5 1385 3.3 1023

Life: 2925d 207386 4.7 9747 3.4 7052

Ivyhall Astro Jet Ronie VG-86-CAN

5-04 2x 305d 18472 4.2 769 3.1 578





**SAVAGE-LEIGH GOLD LINDA-ET EX-91 EX-MS  
DAM OF LOT 25**



**SAVAGE-LEIGH LICORICE-ET EX-92 EX-MS GMD DOM  
2ND DAM OF LOT 25**

**25**

**Holstein Plaza Contacts:**

Steve Mower +1 240-520-5906  
Jennifer Dingbaum +1 320-250-2412

**Apples Absolute-Red-ET**

139358472\*CV \*TL \*TD  
PTA -1475M 19F -P 98%R 4/14  
PTA -1.6PL 3.39SCS -2.6DPR  
PTA +3.87T +3.79UDC +2.74FLC 97%R  
GTPI +1588G

**Savage-Leigh Gold Linda-ET**

3004778750 Excellent-91 EVEEEE @ 4-06  
4-05 2x 215d 23820 4.7 1105 3.2 771 inc.  
2-04 2x 305d 22460 4.4 986 3.7 839  
• 2nd Sr. 2-Year-Old MD State Fair 2011

*Maternal sister to:*

**Savage-Leigh Lavish-ET EX-94 95-MS**  
• Grand Champion MD Spring Show 2009  
**Savage-Leigh Leona-ET EX-96 96-MS 2E**  
• Reserve All-American 125,000 Lb. Cow 2012  
• Supreme Champion MD State Fair 2012

*Full sister to:*

**Savage-Leigh Gold Lona-ET EX-92 92-MS**

### FIVE #1 EMBRYOS

• Worldwide Export Available

**Ladino Park Talent-Imp-ET \*RC**

AUS 9300377 \*TV \*TL \*TY  
PTA -259M -32F +2P 99%R 12/13  
PTA +2.09T +2.25UDC +1.07FLC  
GTPI +1417G

**KHW Regiment Apple-Red-ET**

135511521 Excellent-96 3E DOM  
4-01 2x 365d 35750 4.7 1682 3.7 1314  
• Res. Grand Champion R&W WDE 2013

**Braedale Goldwyn**

CAN 10705608 GP-CAN EX'05 \*TV \*TL  
PTA -45M +29F +12P 99%R 12/13  
PTA +2.82T +2.47UDC +2.36FLC  
GTPI +1876G

**Savage-Leigh Licorice-ET**

60317090 Excellent-92 GMD DOM  
4-02 2x 365d 51220 4.3 2179 3.3 1693  
Life: 1018d 113740 4.4 4968 3.4 3858  
• Nom. All-American Produce of Dam 2012  
• Nom. All-American Produce of Dam 2011  
• Grand Champ. NY Spring Int. Show 2006  
• Nominated All-American 2006

*Maternal sisters to Lot 25*

**Savage-Leigh Miss Laney**

• 1st Winter Calf, PA Spring Show 2014

**Savage-Leigh Allen Lilac**

• 2nd Spring Calf Eastern National 2012  
• 3rd Spring Calf Grand Nat'l Jr. Show '12

*3rd thru 8th Dam*

**Savage-Leigh Bellwood Linda**

EX-92 2E GMD DOM  
2-10 2x 365d 40240 5.8 2349 3.4 1358  
Life: 1312d 126760 5.2 6576 3.2 4076  
• Nom All-American Jr. 3-Year-Old 1999  
• Nom Global Cow of the Year 2005

**Savage-Leigh Star Linda-ET VG-87 GMD**

2-02 2x 365d 30890 4.0 1236 3.1 952

**Savage-Leigh Glenview Linda**

EX-90 EVVE GMD DOM  
6-08 2x 365d 41820 4.6 1936 3.0 1247  
Life: 1892d 150300 4.4 6636 3.2 4813

**Savage-Leigh Lindas Chairman GP-84**

5-10 2x 365d 30620 3.8 1167 3.3 1013  
Life: 1972d 121550 3.9 4718 3.3 4013

**Savage-Leigh Creek Lydia VG-88**

4-11 2x 344d 16390 4.2 685 3.1 511

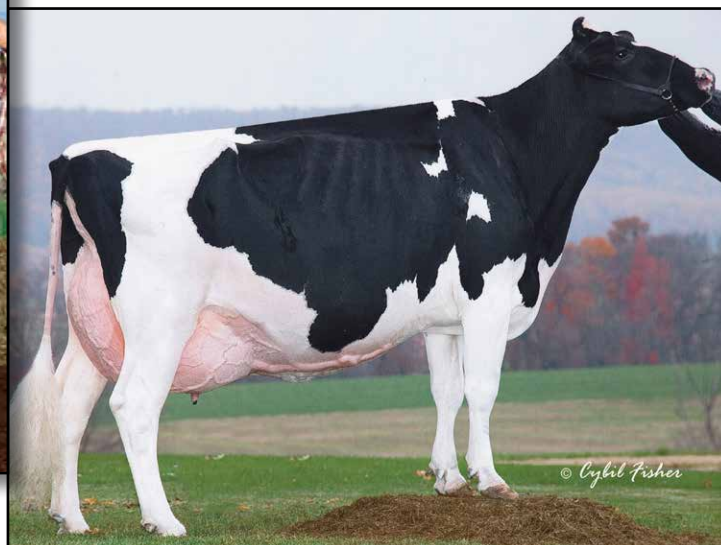
**Savage-Leigh Kate Linda VG-85**

6-01 2x 305d 19940 4.0 793





**DURCHAN 109 GW DANETTE-ETS EX-91 EX-MS  
DAM OF LOT 26**



**COLDSPRINGS DUR CHAN 109-ET EX-95 2E DOM  
2ND DAM OF LOT 26**

# 26

## FIVE #1 EMBRYOS

- Worldwide Export Available

### Holstein Plaza Contacts:

Steve Mower +1 240-520-5906

Jennifer Dingbaum +1 320-250-2412

### Val-Bisson Doorman

107281711C 99%RHA-I \*TV \*TL \*TY \*TD  
PTA +946M +60F +50P 77%R 4/14  
PTA +3.8PL 2.53SCS +0.0DPR  
PTA +4.02T +3.20UDC +2.18FLC 76%R  
GTPI +2370G

### Durchan 109 GW Danette-ETS

66499665 Excellent-91 EX-MS @ 3-07  
GTPI+1740 +3.74T +3.10UDC +2.60FLC  
4-03 2x 181d 19410 3.0 575 2.9 560 inc.  
2-11 2x 365d 33670 3.6 1199 3.3 1108  
2-00 2x 287d 23830 3.4 819 3.3 777

### De-Su 521 Bookem-ET

66636657 \*TR \*TV \*TL \*TY \*TD  
PTA +1585M +49F +61P 99%R 4/14  
PTA +2.62T +2.14UDC +1.64FLC 97%R  
GTPI +2279G

### Val-Bisson Shottle Imelda

106173432 Very Good-85-2YR-CAN  
1-11 2x 335d 23783 4.1 985 3.7 8826

### Braedale Goldwyn

CAN 10705608 GP-CAN EX'05 \*TV \*TL  
PTA -9M +31F +13P 99%R 4/14  
PTA +2.80T +2.45UDC +2.36FLC  
GTPI +1879G

### Coldsprings Dur Chan 109-ET

60118563 Excellent-95 2E DOM  
6-04 2x 365d 41850 4.3 1784 3.3 1371  
4-00 2x 305d 30180 3.3 1004 3.1 949  
Life: 1423d 130510 3.6 4695 3.3 5064  
• Res All-American Aged Cow 2007  
• HM All-American 5-Year-Old 2005  
• All-American 4-Year-Old 2004

### 3rd thru 10th Dams

**C Bermaska Starbuck Chancel**  
VG-89 DOM

2-07 2x 365d 28400 4.3 1230 3.5 999

• All-American Senior 2-Year-Old 1992

• All-American Senior Yearling Heifer 1991

**Donaco Enhancer Cheryl** VG-87-CAN

7-02 2x 305d 21462 4.8 1021 3.5 743

**Danaco Apache Chanda** VG-86

4-11 2x 322d 19160 4.3 829 3.5 670

**Danaco Elevation Candace** VG-86

Life: 2564d 185599 3.7 6834

**Davis-Farm Maple Cindy** EX-90 GMD

5-03 2x 365d 23849 3.7 871

**Davis-Farm Heritage Candace** EX-90 EEEV

2-06 2x 305d 12060 3.7 445

**Davis-Farm Model Lena** VG-85

4-02 2x 305d 14060 4.1 582

**Maview Candace Pilot** EX-91 VEEV

Life: 3139d 151504 3.9 5825





WINDY-KNOLL-VIEW CHANEL-ET  
2ND DAM OF LOT 27

27

## FOUR #1 EMBRYOS

- Worldwide Export Available; qualify for New Zealand

### Holstein Plaza Contacts:

Steve Mower +1 240-520-5906  
Jennifer Dingbaum +1 320-250-2412

### Mr Atwood Brokaw-ET

140602463 \*TR \*TV \*TL \*TD  
PTA +292M +30F +21P 77%R 4/14  
PTA -1.3PL 3.12SCS -0.8DPR  
PTA +4.53T +3.85UDC +3.00FLC 77%R  
GTPI +1915G

### Windy-Knoll-View Candle

69183456 Very Good-86-2YR VG-MS  
2-03 2x 365d 24940 3.7 926 3.2 803  
• Due back and potential 10th generation EX!

### Sisters to Candle

Windy-Knoll-View Convey EX-92  
Windy-Knoll-View Covergirl EX-93  
Windy-Knoll-View Chantilly EX-92 (max)

### Maple-Downs-I G W Atwood-ET

8956379C Very Good-87 \*TV \*TL \*TY \*TD  
PTA +294M +51F +15P 99%R 4/14  
PTA +4.66T +3.51UDC +3.74FLC 99%R  
GTPI +1942G

### Regancrest Mac Bikasa

63606799 Very Good-89-5YR-CAN  
4-09 2x 305d 32588 4.5 1473 3.3 1063

### Gen-Mark Stmatic Sanchez

134422312 \*TR \*TV \*TL \*TY \*TD  
PTA +949M +1F +22P 99%R 4/14  
PTA +3.01T +2.03UDC +2.56FLC 99%R  
GTPI +1686G

### Windy-Knoll-View Chanel-ET

134103590 Excellent-94 EEEEE 3E DOM  
8-10 2x 365d 38820 3.8 1481 3.1 1220  
Life: 2494d 201390 4.0 8130 3.4 6778  
• Nom. All-American Jr. 3-Yr-Old 2006  
• 3rd International Jr. Show 3-Yr 2006  
• 2nd Eastern Fall National Jr 3-Yr 2006  
• 3rd Eastern Fall National 6+ Yr 2006  
• 3rd Eastern Fall National 4-Yr 2007

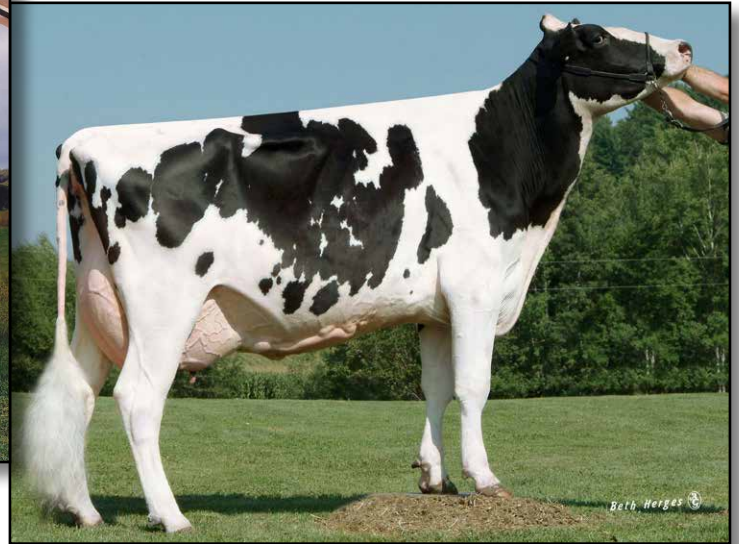
### 3rd thru 11th Dam

Windy-Knoll-View Catherine EX-90  
6-10 2x 365 24790 3.5 873 3.2 803  
Life: 1939d 114380 3.5 3997 3.3 3755  
Windy-Knoll-View Juror Cass EX-94 3E  
5-09 2x 365d 40620 3.1 1269 3.1 1260  
• 2nd 125,000 lb Cow, Eastern Fall Nat'l 2003  
Windy-Knoll-View Cassandra EX-90  
5-04 2x 365d 29251 3.7 1089 3.3 977  
Windy-Knoll-View Caitlin EX-90-  
5-01 2x 365d 37090 2.8 1041 3.3 1217  
Windy-Knoll-View Supreme Chris EX-90  
3-04 2x 312d 17300 3.3 576 3.1 543  
Windy-Knoll-View Bova Christie EX-91 2E  
6-08 2x 305d 19650 3.8 754 3.2 630  
Windy-Knoll-View Jerry Crystal EX-92 2E  
Life (10 Lacs): 189168 3.7 6940 3.4 5944  
Windy-Knoll-View CD Cindy-OC EX-90 2E  
Storther CM Burke Crusader VG-85





CASTLEHOLM PRONTO RYEA EX-90  
DAM OF LOT 28



ASTRAHOE R LORENZO RACHEL EX-90  
2ND DAM OF LOT 28

28

**Holstein Plaza Contacts:**

Steve Mower +1 240-520-5906  
Jennifer Dingbaum +1 320-250-2412

**Maple-Downs-I G W Atwood-ET**

8956379C Very Good-87 \*TV \*TL \*TY \*TD  
PTA +294M +51F +15P 99%R 4/14  
PTA +219NM\$ +1.0PL 2.97CS -2.5DPR  
PTA +4.66T +3.51UDC +3.74FLC 99%R  
GTPI +1942G

**Castleholm Pronto Ryea**

66022257 Excellent-90 91-MS @ 5-00  
2-08 2x 365d 30390 4.1 1258 3.5 1071  
3-09 2x 305d 22340 4.4 976 3.8 844  
• 15th generation EXCELLENT!

**FIVE #1 EMBRYOS**

• Worldwide Export Available

**Braedale Goldwyn**

CAN 10705608 GP-CAN EX'05 \*TV \*TL  
PTA -9M +31F +13P 99%R 4/14  
PTA +2.80T +2.45UDC +2.36FLC  
GTPI +1879G

**MD-Delight Durham Atlee-ET**

131704103 Excellent-92 EEEEE DOM  
3-11 2x 365d 38290 5.5 2091 3.1 1177  
• All-American Senior 3-Year-Old 2005

**Windy-Know-View Pronto**

132815961 EX-95 \*TR \*TV \*TL \*TY \*TD  
PTA +731M +18F +13P 99%R 4/14  
PTA +1.82T +1.11UDC +1.87FLC 4/14  
GTPI +1776G

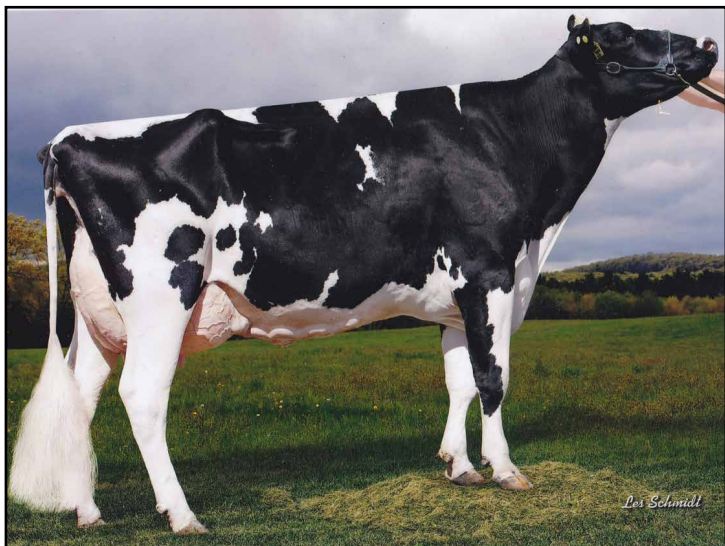
**Astrahoe R Lorenzo Rachel**

134779991 Excellent-90 EX-MS @ 3-10  
3-09 2x 365d 42470 3.9 1670 3.3 1409  
2-02 3x 305d 25600 4.1 1039 2.9 750

**3rd thru 15th Dams**

**Astrahoe P Rosa Robyn** EX-90 EX-MS  
3-02 3x 365d 27860 3.4 935 2.9 815  
**Pinehurst Royal Rosa-ET** EX-91 2E  
3-10 3x 365d 41395 3.3 1358 2.8 1145  
Life: 1212d 115400 3.5 4073 3.1 3593  
**Pinehurst Roulade** EX-92 EEEEE 2E  
5-00 3x 365d 35130 3.6 1271 3.2 1115  
Life: 1761d 142070 3.8 5395 3.3 4705  
**Pinehurst Sweet Cleo** EX-90 EEVEV  
6-00 3x 365d 40380 4.4 1776 3.2 1305  
**Pinehurst Sweet Freedom** EX-90 VEVE  
5-07 3x 330d 34520 4.3 1500 3.1 1084  
**Pinehurst Sweet Delite** EX-91 3E GMD  
8-10 3x 365d 28460 4.2 1194 3.2 917  
Life: 2228d 151600 4.0 6116 3.2 4907  
**Pinehurst Rapture** EX-96 4E GMD  
8-02 3x 365d 30370 4.2 1290 3.1 948  
Life: 2297d 160790 3.9 6337 3.0 2469  
**Pinehurst Fragrance** EX-90 2E  
4-8 3x 365d 34490 3.6 1234  
**Hayssen Fond Ariel** EX-90 2E  
8-06 2x 328d 23330 3.2 753  
**Hayssen D V Audrey** EX-90 2E  
9-03 2x 365d 23670 4.4 1035  
**Whirlhill Q Rag Apple Ariel** EX-92  
6-02 2x 365d 26755 4.2 1134  
**Arlite Posch** EX-92 GMD  
5-03 2x 365d 21193 3.7 779  
**Audrey Posch** EX-93 GMD  
14-2 2x 365d 25572 3.7 948





CASTLEHOLM PRONTO RYEA EX-90  
DAM OF LOT 29



ASTRAHOE R LORENZO RACHEL EX-90  
2ND DAM OF LOT 29

29

**Holstein Plaza Contacts:**

Steve Mower +1 240-520-5906  
Jennifer Dingbaum +1 320-250-2412

**Gillette Windbrook**

7816429C 91%RHA-NA \*TV \*TL \*TY \*TD  
PTA +621M +41F +26P 97%R 4/14  
PTA +260NM\$ +0.4PL 2.92SCS -1.9DPR  
PTA +2.92T +2.14UDC +2.70FLC  
GTPI +1850G

**Castleholm Pronto Ryea**

66022257 Excellent-90 91-MS @ 5-00  
2-08 2x 365d 30390 4.1 1258 3.5 1071  
3-09 2x 305d 22340 4.4 976 3.8 844  
• 15th generation EXCELLENT!

## FIVE #1 IVF FEMALE EMBRYOS

• Eligible for shipment in the U.S. and export to the EU and China

**Gillette Brilea F B I-ET**

89524C EX-94-CAN EXTRA'05 \*TV \*TL  
PTA +1473M +39F +35P 99%R 4/14  
PTA +1.85T +1.24UDC +1.51FLC  
GTPI +1763G

**Gillette Blitz 2nd Wind-ET**

7352248C VG-88-CAN 34\*  
2-02 3x 365d 39096 3.6 1422 3.0 1182

**Windy-Know-View Pronto**

132815961 EX-95 \*TR \*TV \*TL \*TY \*TD  
PTA +731M +18F +13P 99%R 4/14  
PTA +1.82T +1.11UDC +1.87FLC 4/14  
GTPI +1776G

**Astrahoe R Lorenzo Rachel**

134779991 Excellent-90 EX-MS @ 3-10  
3-09 2x 365d 42470 3.9 1670 3.3 1409  
2-02 3x 305d 25600 4.1 1039 2.9 750

**3rd thru 15th Dams**

**Astrahoe P Rosa Robyn** EX-90 EX-MS  
3-02 3x 365d 27860 3.4 935 2.9 815  
**Pinehurst Royal Rosa-ET** EX-91 2E  
3-10 3x 365d 41395 3.3 1358 2.8 1145  
Life: 1212d 115400 3.5 4073 3.1 3593  
**Pinehurst Roulade** EX-92 EEEEE 2E  
5-00 3x 365d 35130 3.6 1271 3.2 1115  
Life: 1761d 142070 3.8 5395 3.3 4705  
**Pinehurst Sweet Cleo** EX-90 EEEVEV  
6-00 3x 365d 40380 4.4 1776 3.2 1305  
**Pinehurst Sweet Freedom** EX-90 VEVE  
5-07 3x 330d 34520 4.3 1500 3.1 1084  
**Pinehurst Sweet Delite** EX-91 3E GMD  
8-10 3x 365d 28460 4.2 1194 3.2 917  
Life: 2228d 151600 4.0 6116 3.2 4907  
**Pinehurst Rapture** EX-96 4E GMD  
8-02 3x 365d 30370 4.2 1290 3.1 948  
Life: 2297d 160790 3.9 6337 3.0 2469  
**Pinehurst Fragrance** EX-90 2E  
4-8 3x 365d 34490 3.6 1234  
**Hayssen Fond Ariel** EX-90 2E  
8-06 2x 328d 23330 3.2 753  
**Hayssen D V Audrey** EX-90 2E  
9-03 2x 365d 23670 4.4 1035  
**Whirlhill Q Rag Apple Ariel** EX-92  
6-02 2x 365d 26755 4.2 1134  
**Arlite Posch** EX-92 GMD  
5-03 2x 365d 21193 3.7 779  
**Audrey Posch** EX-93 GMD  
14-2 2x 365d 25572 3.7 948





WINDSOR-MANOR KLASS DARBY VG-86-2YR VG-MS  
2ND DAM OF LOT 30

30

## FIVE #1 EMBRYOS

• Worldwide Export Available

### Holstein Plaza Contacts:

Steve Mower +1 240-520-5906

Jennifer Dingbaum +1 320-250-2412

### Pine-Tree Ohio Style P-ET

71178738 \*TR \*PC \*TY

PTA +2033M +64F +57P 76%R 4/14

PTA +705NM\$ +4.3PL 2.82SCS +1.8DPR

PTA +1.09T +1.24UDC +1.26FLC 76%R

GTPI +2184G

### Ensenada Supersire Dot

70957343

Born: March 6, 2013

GTPI+2332 +1058M +66F +53P +3.15T

### Co-Op O-Style Oman Just-ET

137611441 GM 12/11 \*TR \*TV \*TL \*TY

PTA +2067M +42F +53P 99%R 4/14

PTA +1.47T +1.22UDC +1.91FLC 97%R

GTPI +2179G

### Hickorymea Signif Ohio-P-ET

140759222 Very Good-85

02-01 2x 305d 29910 3.8 1148 3.1 916

### Seagull-Bay Supersire-ET

69981349 \*TV \*TL \*TY \*TD

PTA +2434M +111F +78P 76%R 4/14

PTA +2.40T +1.71UDC +1.28FLC 76%R

GTPI +2420G

### Windsor-Manor Klass Darby

68610882 Very Good-86-2YR VG-MS

1-10 2x 297d 22930 3.8 872 3.1 707

### 3rd thru 9th Dams

**Ms Vision-Gen Roy Dezi** EX-92 EEEEE 2E

2-11 2x 365d 29610 3.5 1037 3.0 897

Life: 1445d 115390 3.4 3874 3.0 3492

**Raggi-Vision BW Marsh Dezi**

EX-90 EEEVE 2E

2-00 2x 365d 28640 3.8 1109 3.1 879

Life: 2027d 138600 3.6 4995 3.0 4175

**Miss Pintail-Point Dezi** VG-85 VG-MS

2-01 2x 249d 16670 4.0 675 2.9 489

**Regancrest Rudolph Disa** VG-87 DOM

2-04 2x 365d 31136 4.3 1326 3.1 975

**Snow-N Dellias Dessie** EX-91 2E GMD DOM

7-00 2x 365d 34060 3.7 1189 3.1 1043

Life: 1661d 119400 3.7 4414 3.2 3784

**Snow-N Denises Dellia** EX-95 GMD DOM

7-06 2x 365d 35610 4.0 1431 3.1 1103

Life: 2558d 180240 3.9 7108 3.4 6065

• Gr Ch & Best Udder Spring Nat/WI 1991

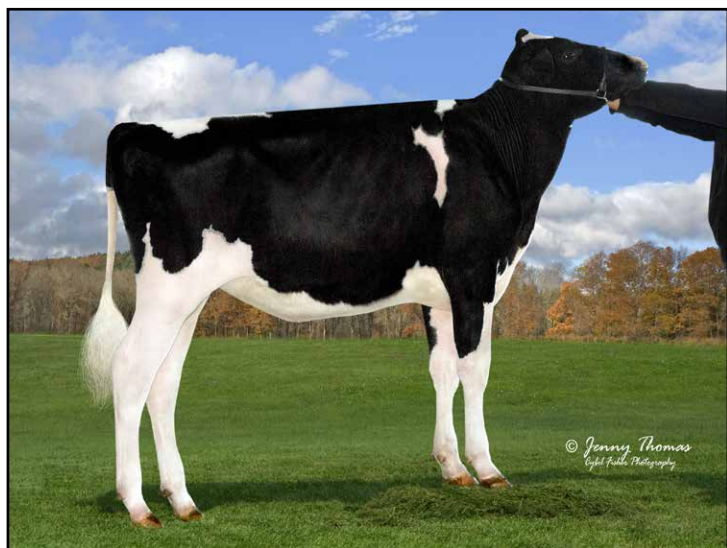
**Snow-N Dorys Denise**

EX-90 2E GMD DOM

5-09 2x 365d 33350 3.8 1256 2.9 975

Life: 1604d 114010 3.6 4153 3.0 3432





**MS TARA GC TANGO**  
DAM OF LOT 31



**WERRCROFF GOLDWYN TARA EX-93**  
2ND DAM OF LOT 31

31

## THREE #1 EMBRYOS

- Worldwide Export Available

### Holstein Plaza Contacts:

Steve Mower +1 240-520-5906

Jennifer Dingbaum +1 320-250-2412

### Gillette Windbrook

7816429C 91%RHA-NA \*TV \*TL \*TY \*TD  
PTA +621M +41F +26P 97%R 4/14  
PTA +260NM\$ +0.4PL 2.92SCS -1.9DPR  
PTA +2.92T +2.14UDC +2.70FLC  
GTPI +1850G

### Ms Tara GC Tango

72127506 Born: March 3, 2013

- Junior All-Georgia Spring Calf 2013

Full sister to GC Tango

### Ms Tara GC Tahiti

- All-New York Spring Calf 2013
- Two sisters by Sanchez scored VG-87-2YR
- Daughter of Werrcroff Goldwyn Tara EX-93

### Gillette Brilea F B I-ET

89524C EX-94-CAN EXTRA'05 \*TV \*TL  
PTA +1473M +39F +35P 99%R 4/14  
PTA +1.85T +1.24UDC +1.51FLC  
GTPI +1763G

### Gillette Blitz 2nd Wind-ET

7352248C VG-88-CAN 34\*  
2-02 3x 365d 39096 3.6 1422 3.0 1182

### Mr Chassity Gold Chip-ET

140145553 100%RHA-NA \*TR \*TV \*TL  
PTA +211M +23F +0P 94%R 4/14  
PTA +3.70T +3.31UDC +3.16FLC 89%R  
GTPI +1996G

### Werrcroff Goldwyn Tara

7772421 Excellent-93 EEEEE @5-02  
2-06 2x 365d 21128 3.9 826 2.9 610  
• Nom All-American 5-Year-Old 2011  
• Nom All-Canadian 5-Year-Old 2011  
• 4th 5-Year-Old, World Dairy Expo 2011  
• 6th 5-Year-Old, Royal Winter Fair 2011  
• 3rd Junior 3-Year-Old, Quebec Spring 2009

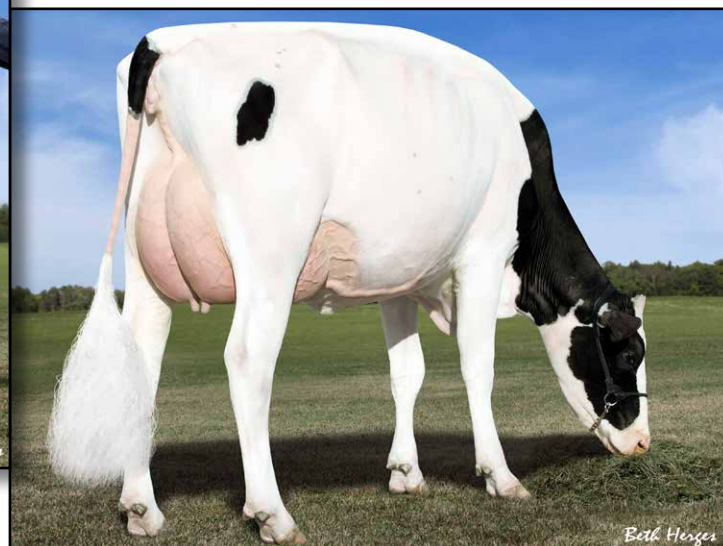
### 3rd thru 8th Dams

**Werrcroff Igniter Tabitha** GP-83-2YR  
2-05 2x 315d 20026 3.8 767 3.1 623  
**Werrcroff Progress Tessa** VG-86-3YR-CAN  
4-10 2x 365d 26616 3.9 1032 3.0 789  
**Werrcroff Lindy Tamara** GP-84  
6-04 2x 365d 29487 4.8 1404 3.3 966  
Life: 5 Lact. 102349 4.6 4722 3.3 3373  
**Werrcroff Johanna Tammy** VG-85  
10-03 2x 308d 23305 3.8 882 3.1 716  
**Werrcroff Marquis Taffy** EX-90 2\*  
8-09 2x 334d 21755 4.2 922  
**Alflo Princess Sovereign Pontiac** EX-CAN  
6-04 2x 365d 26962 4.0 1082





JOSEY-LLC DAY SHANIA-ET  
DAM OF LOT 32



DES-Y-GEN PLANET SILK-ET \*RC EX-90 91-MS  
2ND DAM OF LOT 32

32

## FOUR #1 EMBRYOS

• Worldwide Export Available

### Holstein Plaza Contacts:

Steve Mower +1 240-520-5906

Jennifer Dingbaum +1 320-250-2412

### Morningview Mcc Kingboy-ET

72044077 \*TV \*TL \*TY \*TD

PTA +1927M +72F +63P 74%R 4/14

PTA +846NM\$ +6.1PL 2.74SCS +1.8DPR

PTA +3.92T +3.09UDC +2.85FLC 74%R

GTPI +2602G

### Josey-LLC Day Shania-ET

71661944 Born: January 30, 2013

GTPI+2332 +1511M +78F +47P +2.53T

### Maternal sister to:

### Dymentholm Sunview Sassy-ET \*RC

GTPI+2436 +845NM\$ +2.88T

### Josey-LLC Uno Sangaria-ET \*RC

GTPI+2386 +769NM\$ +3.34T

### De-Su Bkm McCutchen 1174-ET

69990138 \*TV \*TL \*TY \*TD

PTA +1277M +66F +51P 78%R 4/14

PTA +3.72T +3.36UDC +2.57FLC 78%R

GTPI +2384G

### Morningview Super Megan

68654508 Very Good-85 VG-MS

2-01 3x 280d 22539 3.7 823 3.1 695 inc.

### Minnigan-Hills Day-ET

69774730 \*TV \*TL \*TY \*TD

PTA +1298M +47F +41P 77%R 4/14

PTA +2.93T +2.80UDC +2.07FLC 76%R

GTPI +2324G

### Des-Y-Gen Planet Silk-ET \*RC \*TY

106109413C Excellent-90 EX-MS @ 4-03

GTPI+2076 +1215M +80F +38P +1.98T

2-02 2x 365d 29990 4.5 1351 3.2 960

• #14 GTPI \*RC Cow, Locator List 4/14

• Nominated HI Global Red Impact Cow

• Dam of Sympatico, Seneca and Stoic

### 3rd thru 12th Dams

#### Gen-I-Beq Bolton Silence \*RC

VG-85-2YR-CAN

2-04 2x 365d 30002 4.6 1391 3.6 1069

#### Gen-I-Beq Goldwyn Secret VG-87-CAN 4\*

5-05 2x 365d 30573 4.5 1389 3.4 1038

#### Gen-I-Beq Durham Sherry VG-87-CAN 7\*

5-02 2x 365d 40036 3.9 1574 3.2 1268

#### Glen Drummond Splendor

VG-86-2YR-CAN 36\*

4-10 2x 314d 26510 4.2 1124 3.2 840

#### Glen Drummond Aero Flower

VG-88-CAN 18\*

2-03 2x 326d 25622 4.0 1032 3.4 882

#### Glen Drummond Shower EX-CAN 13\*

4-10 2x 365d 28583 4.8 1380 3.6 1016

#### Glen Drummond S C Jo Beth

EX-2E-CAN 7\*

Life (6 Lacs): 141637 4.2 5994 3.2 3593

• Grand Champion Brant-Wentworth 1984

#### Glen Drummond Matt Beth VG-85 4\*

11-10 2x 365d 25038 3.7 935

Life (5 Lacs): 105953 4.1 4295

#### Glen Drummond Marquis Beth VG-CAN

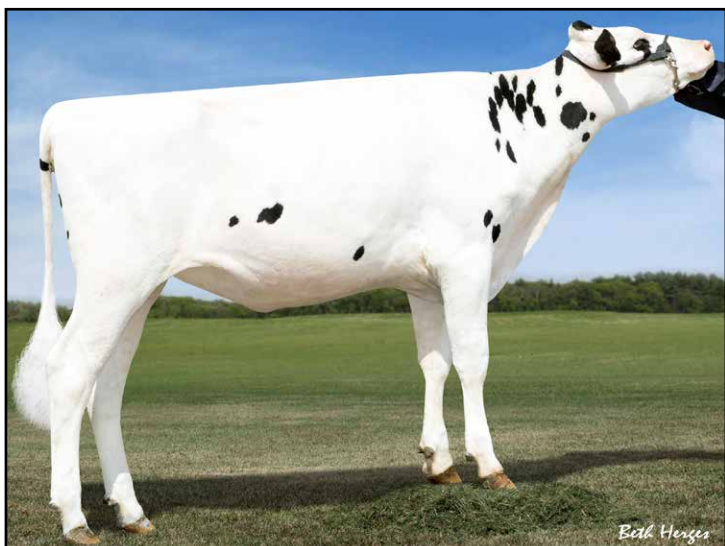
Life (8 Lacs): 112688 4.2 4766

#### Ferglynn Rag Apple Bertha VG-CAN 3\*

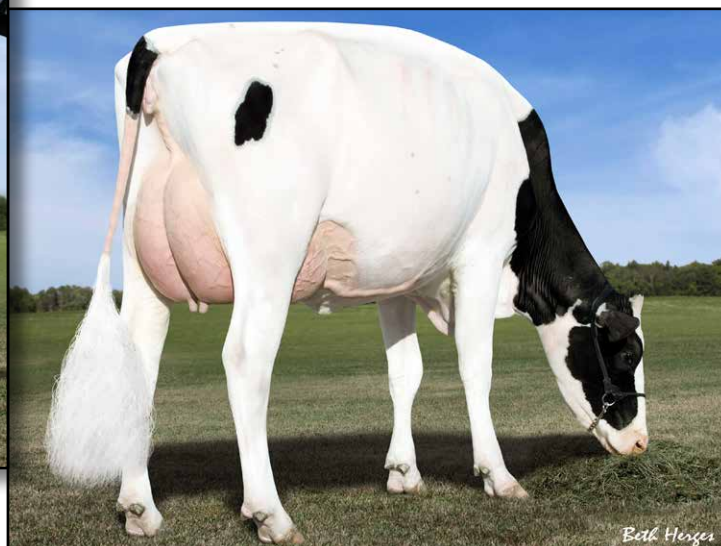
7-00 2x 365d 27796 4.7 1303

Life (9 Lacs): 208857 4.0 8344





**JOSEY-LLC DAY SUZIE-ET**  
DAM OF LOT 33



**DES-Y-GEN PLANET SILK-ET \*RC EX-90 91-MS**  
2ND DAM OF LOT 33

**33**

## FOUR #1 EMBRYOS

• Worldwide Export Available

### Holstein Plaza Contacts:

Steve Mower +1 240-520-5906

Jennifer Dingbaum +1 320-250-2412

### Larcrest Commander-ET

58591942 \*TV \*TL \*TY \*TD

PTA +1704M +85F +69P 73%R 4/14

PTA +4.7PL 2.73SCS +0.1DPR

PTA +3.25T +2.96UDC +2.51FLC 72%R

GTPI +2473G / GPA-LPI+3339 / RZG+155

### Josey-LLC Day Suzie-ET

71661946 Born: February 1, 2013

GTPI+2254 +1230M +69F +41P +2.49T

Maternal sister to:

### Dymentholm Sunview Sassy-ET \*RC

GTPI+2436 +845NM\$ +2.88T

### Josey-LLC Uno Sangaria-ET \*RC

GTPI+2386 +769NM\$ +3.34T

### Mountfield SSI Dcy Mogul

3006972816 \*TV \*TL \*TY \*TD

PTA +1377M +79F +49P 78%R 4/14

PTA +2.81T +2.99UDC +2.78FLC 77%R

GTPI+2394G

### Larcrest Calinda-ET

70119330

### Minnigan-Hills Day-ET

69774730 \*TV \*TL \*TY \*TD

PTA +1298M +47F +41P 77%R 4/14

PTA +2.93T +2.80UDC +2.07FLC 76%R

GTPI +2324G

### Des-Y-Gen Planet Silk-ET \*RC \*TY

106109413C Excellent-90 EX-MS @ 4-03

GTPI+2076 +1215M +80F +38P +1.98T

2-02 2x 365d 29990 4.5 1351 3.2 960

• #14 GTPI \*RC Cow, Locator List 4/14

• Nominated HI Global Red Impact Cow

• Dam of Sympatico, Seneca and Stoic

### 3rd thru 12th Dams

#### Gen-I-Beq Bolton Silence \*RC

VG-85-2YR-CAN

2-04 2x 365d 30002 4.6 1391 3.6 1069

#### Gen-I-Beq Goldwyn Secret VG-87-CAN 4\*

5-05 2x 365d 30573 4.5 1389 3.4 1038

#### Gen-I-Beq Durham Sherry VG-87-CAN 7\*

5-02 2x 365d 40036 3.9 1574 3.2 1268

#### Glen Drummond Splendor

VG-86-2YR-CAN 36\*

4-10 2x 314d 26510 4.2 1124 3.2 840

#### Glen Drummond Aero Flower

VG-88-CAN 18\*

2-03 2x 326d 25622 4.0 1032 3.4 882

#### Glen Drummond Shower EX-CAN 13\*

4-10 2x 365d 28583 4.8 1380 3.6 1016

#### Glen Drummond S C Jo Beth

EX-2E-CAN 7\*

Life (6 Lacs): 141637 4.2 5994 3.2 3593

• Grand Champion Brant-Wentworth 1984

#### Glen Drummond Matt Beth VG-85 4\*

11-10 2x 365d 25038 3.7 935

Life (5 Lacs): 105953 4.1 4295

#### Glen Drummond Marquis Beth VG-CAN

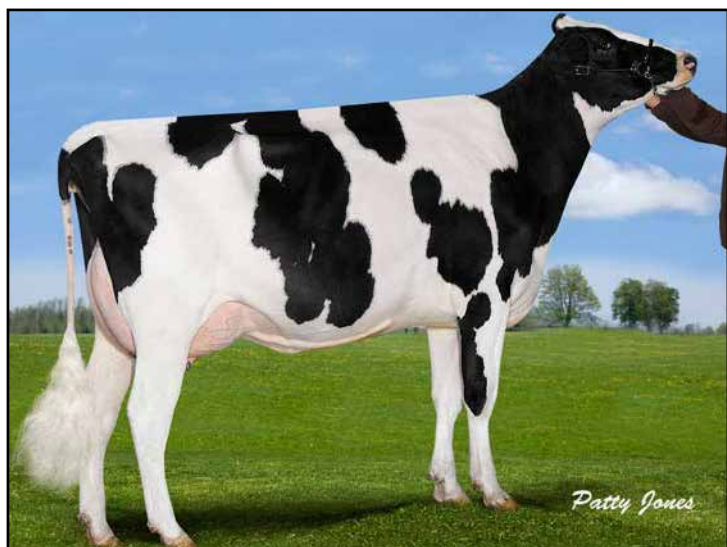
Life (8 Lacs): 112688 4.2 4766

#### Ferglynn Rag Apple Bertha VG-CAN 3\*

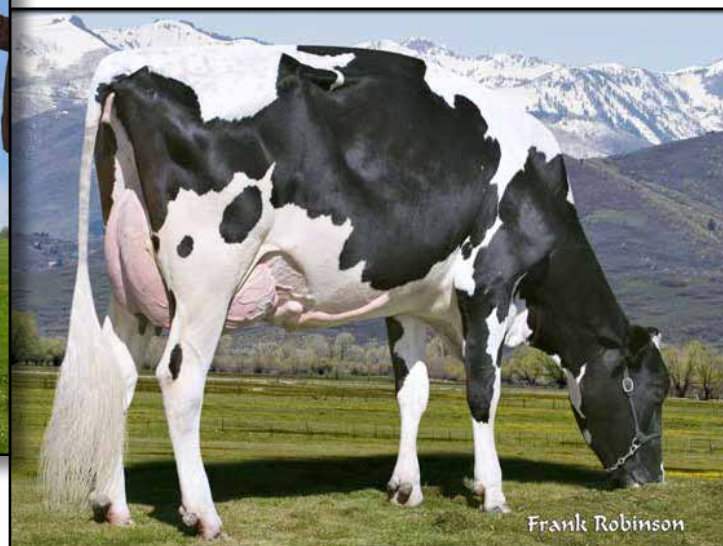
7-00 2x 365d 27796 4.7 1303

Life (9 Lacs): 208857 4.0 8344





ARROWHEAD SANCHEZ ZAIRE VG-88-3YR  
DAM OF LOT 34



HAVENVALLEY GIBSON ZWETTIE EX-93 2E USA  
2ND DAM OF LOT 34

34

## FOUR #1 EMBRYOS

• Worldwide Export Available

### Holstein Plaza Contacts:

Steve Mower +1 240-520-5906

Jennifer Dingbaum +1 320-250-2412

### Gillette Windbrook

7816429C 91%RHA-NA \*TV \*TL \*TY \*TD  
PTA +621M +41F +26P 97%R 4/14  
PTA +260NM\$ +0.4PL 2.92SCS -1.9DPR  
PTA +2.92T +2.14UDC +2.70FLC  
GTPI +1850G

### Arrowhead Sanchez Zaire

140555967C Very Good-88-3YR  
1-09 2x 365d 22941 3.7 849 3.3 763  
3-05 2x 305d 28320 4.2 1202 3.1 877  
• 12 sisters scored VG, 3 VG-88-3YR to date

### Gillette Brilea F B I-ET

89524C EX-94-CAN EXTRA'05 \*TV \*TL  
PTA +1473M +39F +35P 99%R 4/14  
PTA +1.85T +1.24UDC +1.51FLC  
GTPI +1763G

### Gillette Blitz 2nd Wind-ET

7352248C VG-88-CAN 34\*  
2-02 3x 365d 39096 3.6 1422 3.0 1182

### Gen-Mark Stmatic Sanchez

134422312 \*TR \*TV \*TL \*TY \*TD  
PTA +949M +1F +22P 99%R 4/14  
PTA +3.01T +2.03UDC +2.56FLC 99%R  
GTPI +1686G

### Havenvalley Gibson Zweetie

8776939 Excellent-93 2E USA  
5-02 2x 365d 28070 4.3 1219 3.2 889  
6-06 2x 365d 25850 4.2 1079 3.2 832

### 3rd thru 9th Dams

#### Havenvalley Zmall Mtoto

VG-87-6YR-CAN 2\*  
6-05 2x 365d 31360 3.8 1197 3.1 974  
Life (6 Lacs): 176908 4.2 7385 3.2 5743

#### Havenvalley Raider Zabrina

VG-87-6YR-CAN 1\*  
5-11 2x 365d 29769 4.0 1193 3.1 915  
Life (6 Lacs): 173264 4.0 6980 3.2 5593

#### Havenvalley Skychief Zerlina GP-83

5-07 2x 365d 29046 3.1 908 3.1 915

#### Havenley Astre Zabrina

VG-88-6YR-CAN EX-MS  
2-07 2x 365d 23997 3.9 930 3.3 802

**Dothedale Thor Zinna** VG-88-5YR-CAN  
5-03 2x 365d 32540 3.8 1246 3.4 1105  
Life (6 Lacs): 135276 4.0 5357 3.6 4883

#### Dothedale Grand Fort Zita

VG-85  
Life (6 Lacs): 104412 3.7 3829 3.5 3609

#### Dothedale Cimarron Ritzy

VG-85  
Life (5 Lacs): 75869 3.6 2696 3.3 2478





**KINGSMILL ASPEN TAMARA EX-92-5YR EX-MS**  
DAM OF LOT 35



**GAIGE HIGHLIGHT TAMARA EX-97 EEEEE 4E DOM**  
3RD DAM OF LOT 35

**35**

## FIVE #1 EMBRYOS

- Worldwide Export Available; qualify for New Zealand

### Holstein Plaza Contacts:

Steve Mower +1 240-520-5906

Jennifer Dingbaum +1 320-250-2412

### Maple-Downs-I G W Atwood-ET

8956379C Very Good-87 \*TV \*TL \*TY \*TD  
PTA +294M +51F +15P 99%R 4/14  
PTA +219NM\$ +1.0PL 2.97CS -2.5DPR  
PTA +4.66T +3.51UDC +3.74FLC 99%R  
GTPI +1942G

### Kingsmill Aspen Tamara-ET

63427263 Excellent-92-5YR EX-MS  
4-07 2x 305d 35280 4.2 1482 3.4 1182  
2-06 2x 305d 21820 4.5 979 3.2 688  
• 1st Eastern Fall National 4-Yr-Old 2011

### Braedale Goldwyn

CAN 10705608 GP-CAN EX'05 \*TV \*TL  
PTA -9M +31F +13P 99%R 4/14  
PTA +2.80T +2.45UDC +2.36FLC  
GTPI +1879G

### MD-Delight Durham Atlee-ET

131704103 Excellent-92 EEEEE DOM  
3-11 2x 365d 38290 5.5 2091 3.1 1177  
• All-American Senior 3-Year-Old 2005

### EK-Oseeana Aspen-ET

129854100 \*TV \*TL  
PTA -921M +18F -15P 99%R 4/14  
PTA +2.64T +1.66UDC +1.23FLC  
GTPI +1273G

### Gaige Eland Tamale-ET

131988651 Excellent-92 EEEEE 2E GMD  
2-05 2x 365d 32530 3.6 1180 3.1 1021  
3-09 2x 305d 35710 3.5 1255 3.0 1055  
6-07 2x 305d 39710 4.0 1578 3.4 1356  
Life: 1517d 147270 3.7 5376 3.2 4759

### 3rd Dam

#### Gaige Highlight Tamara EX-97 4E DOM

6-00 2x 365d 39810 3.1 1238 3.0 1203

- All-American 125,000 Cow 2004
- All-Canadian Aged Cow 2002
- Res. All-American Aged Cow 2002
- Jr All-American Aged Cow 2002
- Res. All-American & Res. All-Canadian 1998
- HM Senior Champ, International Show 2004
- 15 Excellent daughters!





MAYERLANE ASPEN FAVORITE EX-93 93-MS  
DAM OF LOT 36

36

**Holstein Plaza Contacts:**

Steve Mower +1 240-520-5906

Jennifer Dingbaum +1 320-250-2412

**Maple-Downs-I G W Atwood-ET**

8956379C Very Good-87 \*TV \*TL \*TY \*TD

PTA +294M +51F +15P 99%R 4/14

PTA +219NM\$ +1.0PL 2.97CS -2.5DPR

PTA +4.66T +3.51UDC +3.74FLC 99%R

GTPI +1942G

**Mayerlane Aspen Favorite**

63363732 Excellent-93 93-MS @ 6-06

2-03 2x 365d 24940 3.7 926 3.2 803

• Nom All-American Spring Yearling 2008

## SIX #1 EMBRYOS

• Worldwide Export Available; qualify for New Zealand

**Braedale Goldwyn**

CAN 10705608 GP-CAN EX'05 \*TV \*TL

PTA -9M +31F +13P 99%R 4/14

PTA +2.80T +2.45UDC +2.36FLC

GTPI +1879G

**MD-Delight Durham Atlee-ET**

131704103 Excellent-92 EEEEE DOM

3-11 2x 365d 38290 5.5 2091 3.1 1177

• All-American Senior 3-Year-Old 2005

**Gen-Mark Stmatic Sanchez**

134422312 \*TR \*TV \*TL \*TY \*TD

PTA +949M +1F +22P 99%R 4/14

PTA +3.01T +2.03UDC +2.56FLC 99%R

GTPI +1686G

**Lampada Skybuck Farrah**

134103590 Excellent-93-7YR-USA

3-03 2x 365d 28173 4.6 1296 3.7 1032

6-04 2x 355d 28919 4.1 1170 3.3 966

• Grand Champ, Central WI SF 1999-2000

**3rd thru 5th Dams**

**Lorpat Astrojet Farrah**

VG-87-3YR-CAN 92-MS 1\*

5-10 2x 364d 28126 3.8 1082 3.0 851

Life: 7 Lacs 146105 3.9 5679 3.1 4552

• Res Grand Champ, MB Spring Show 1994

• Grand Champion, MB Spring Show 1993

**Lorpat National Fay GP-82-2YR-CAN**

2-05 2x 305d 15847 3.4 542 2.7 434

Life (5 Lacs): 89937 3.94 3053 2.7 2454

**Lorpat Tribute Faith**

VG-86-5YR-CAN VG-MS 1\*

8-01 2x 305d 21085 3.4 708 2.9 611

Life (4 Lacs): 73407 3.2 2370 3.0 2176





CASTLEHOLM RAE-READY-RED-ET GP-83  
DAM OF LOT 37



ASTRAHOE RM ROSA RAE-LYN EX-90  
2ND DAM OF LOT 37

**37**

**Holstein Plaza Contacts:**

Steve Mower +1 240-520-5906  
Jennifer Dingbaum +1 320-250-2412

**Hylite Barbwire-Red**

9748330 \*TY \*TV \*TL \*TD  
PTA -151M +18F +3P 80%R 4/14  
PTA -0.1PL 2.88SCS -.3DPR  
PTA +2.84T +2.07UDC +1.91FLC 76%R  
GTPI +1662G

**Castleholm Rae-Ready-Red-ET**

68889488 Good Plus-83  
2-04 2x 305d 20010 3.9 777 3.0 600  
• Potential 14th Generation Excellent

Full sister to Ready-Red

**Castleholm Real Rae-Red VG-85**

Dam of:

**Our-Destiny BW Roxan-Red**

- 1st Winter Calf, MN State Fair R&W 2013
- 7th Winter Calf, World Dairy Expo 2013

## THREE #1 EMBRYOS

- Worldwide Export Available

**Deslacs Shaquille \*RC**

103512991C \*TY  
PTA +87M -3F +7P 99%R 4/14  
PTA +1.96T +1.64UDC +2.03FLC  
GTPI +1534G

**Rainyridge Talent Barbara RC**

7543170 EX-95 EEEEE 3-04 2x 365d  
34465 3.6 1257 3.1 1068

**Hurtgen-Vue Reality-Red**

134690997  
PTA -270M +66F +10P 99%R 4/14  
PTA +2.38T +1.79UDC +2.71FLC  
GTPI +1984G

**Astrahoe Rm Rosa Rae-Lyn-ET**

130894399 Excellent-90 EEEVV  
3-09 2x 365d 51214 3.8 1948 2.9 1498  
4-11 2x 365d 59210 4.1 2446 2.8 1659  
Life: 897d 121036 4.0 4830 2.9 3522

**3rd thru 14th Dams**

**Pinehurst Royal Rosa-ET EX-91 2E**  
3-10 3x 365d 41395 3.3 1358 2.8 1145  
Life: 1212d 115400 3.5 4073 3.1 3593  
**Pinehurst Roulade EX-92 EEEEE 2E**  
5-00 3x 365d 35130 3.6 1271 3.2 1115  
Life: 1761d 142070 3.8 5395 3.3 4705  
**Pinehurst Sweet Cleo EX-90 EEVEV**  
6-00 3x 365d 40380 4.4 1776 3.2 1305  
**Pinehurst Sweet Freedom EX-90 VEVE**  
5-07 3x 330d 34520 4.3 1500 3.1 1084  
**Pinehurst Sweet Delite EX-91 3E GMD**  
8-10 3x 365d 28460 4.2 1194 3.2 917  
Life: 2228d 151600 4.0 6116 3.2 4907  
**Pinehurst Rapture EX-96 4E GMD**  
8-02 3x 365d 30370 4.2 1290 3.1 948  
Life: 2297d 160790 3.9 6337 3.0 2469  
**Pinehurst Fragrance EX-90 2E**  
4-8 3x 365d 34490 3.6 1234  
**Hayssen Fond Ariel EX-90 2E**  
8-06 2x 328d 23330 3.2 753  
**Hayssen D V Audrey EX-90 2E**  
9-03 2x 365d 23670 4.4 1035  
**Whirlhill Q Rag Apple Ariel EX-92**  
6-02 2x 365d 26755 4.2 1134  
**Arlite Posch EX-92 GMD**  
5-03 2x 365d 21193 3.7 779  
**Audrey Posch EX-93 GMD**  
14-2 2x 365d 25572 3.7 948





**KINGSMILL ROY ROULETTE-ET EX-92 2E**  
DAM OF LOT 38

**38**

## FIVE #1 EMBRYOS

• Worldwide Export Available

### Holstein Plaza Contacts:

Steve Mower +1 240-520-5906

Jennifer Dingbaum +1 320-250-2412

### Gillette Windbrook

7816429C 91%RHA-NA \*TV \*TL \*TY \*TD  
PTA +621M +41F +26P 97%R 4/14  
PTA +260NM\$ +0.4PL 2.92SCS -1.9DPR  
PTA +2.92T +2.14UDC +2.70FLC  
GTPI +1850G

### Kingsmill Roy Roulette-ET

63016084 Excellent-92 EEEEE 2E  
6-04 2x 256d 22094 3.8 889 2.7 563 inc.  
4-03 2x 347d 24327 3.8 932 3.0 736  
2-04 2x 365d 18545 3.8 699 3.1 573

• 14th generation Excellent!

### Gillette Brilea F B I-ET

89524C EX-94-CAN EXTRA'05 \*TV \*TL  
PTA +1473M +39F +35P 99%R 4/14  
PTA +1.85T +1.24UDC +1.51FLC  
GTPI +1763G

### Gillette Blitz 2nd Wind-ET

7352248C VG-88-CAN 34\*  
2-02 3x 365d 39096 3.6 1422 3.0 1182

### Roylane Jordan-ET

17064727 Excellent-95 GM 2/04 \*TV \*TL  
PTA -338M -9F -13P 99%R 12/13  
PTA +2.01T +1.93UDC +.31FLC  
GTPI +1375G

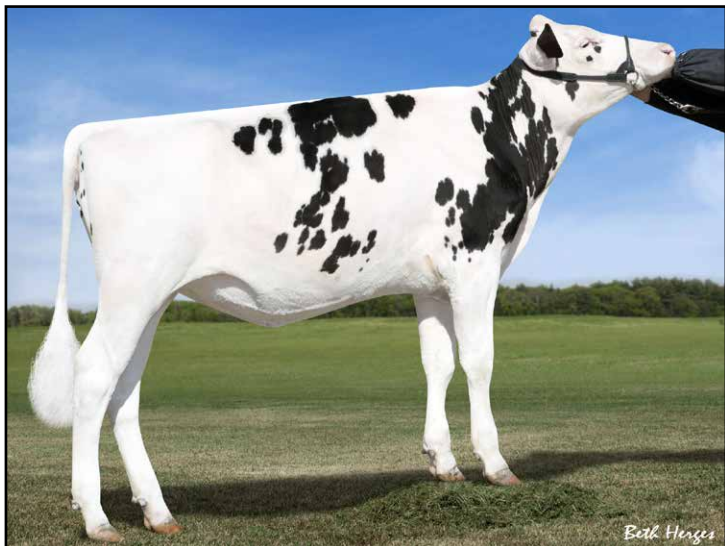
### Astrahoe LJ Rosa Rebel-ET

130430762 Excellent-92 EEEVV 2E  
7-05 2x 365d 48580 4.2 2021 3.0 1468  
3-02 3x 305d 32120 3.9 1250 3.1 1007  
Life: 1186d 110960 3.9 4326 3.2 3529

### 3rd thru 14th Dams

**Pinehurst Royal Rosa-ET EX-91 2E**  
3-10 3x 365d 41395 3.3 1358 2.8 1145  
Life: 1212d 115400 3.5 4073 3.1 3593  
**Pinehurst Roulade EX-92 EEEEE 2E**  
5-00 3x 365d 35130 3.6 1271 3.2 1115  
Life: 1761d 142070 3.8 5395 3.3 4705  
**Pinehurst Sweet Cleo EX-90 EEVEV**  
6-00 3x 365d 40380 4.4 1776 3.2 1305  
**Pinehurst Sweet Freedom EX-90 VEVE**  
5-07 3x 330d 34520 4.3 1500 3.1 1084  
**Pinehurst Sweet Delite EX-91 3E GMD**  
8-10 3x 365d 28460 4.2 1194 3.2 917  
Life: 2228d 151600 4.0 6116 3.2 4907  
**Pinehurst Rapture EX-96 4E GMD**  
8-02 3x 365d 30370 4.2 1290 3.1 948  
Life: 2297d 160790 3.9 6337 3.0 2469  
**Pinehurst Fragrance EX-90 2E**  
4-8 3x 365d 34490 3.6 1234  
**Hayssen Fond Ariel EX-90 2E**  
8-06 2x 328d 23330 3.2 753  
**Hayssen D V Audrey EX-90 2E**  
9-03 2x 365d 23670 4.4 1035  
**Whirlhill Q Rag Apple Ariel EX-92**  
6-02 2x 365d 26755 4.2 1134  
**Arlite Posch EX-92 GMD**  
5-03 2x 365d 21193 3.7 779  
**Audrey Posch EX-93 GMD**  
14-2 2x 365d 25572 3.7 948





**SPEEK-NJ CAROL CHANNING**  
DAM OF LOT 39



**LARCREST COMET-ETS VG-87 DOM**  
2ND DAM OF LOT 39

**39**

## FOUR #1 EMBRYOS

- Worldwide Export Available

### Holstein Plaza Contacts:

Steve Mower +1 240-520-5906

Jennifer Dingbaum +1 320-250-2412

### View-Home Monterey-ET

69087180

PTA +1578M +83F +65P 74%R 4/14

PTA +859NM\$ +5.8PL 2.90SCS +0.7DPR

PTA +3.74T +3.60UDC +2.33FLC 74%R

GTPI +2578G / GLPI: +3415 Conf. +16

### Speek-NJ Carol Channing

71619102 Born: January 1, 2013

GTPI+2268 +1087M +82F +51P +2.09T

Maternal sister to Carol Channing

**Larcrest Credit-ET VG-85 DOM**

GTPI+2221 +1927M +73F +56P +2.05T

2-06 2x 181d 18774 3.7 649 3.3 615 inc.

• Sired by: Badger-Bluff Fanny Freddie

### De-Su Bkm McCutchen 1174-ET

69990138 \*TV \*TL \*TY \*TD

PTA +1277M +66F +51P 78%R 4/14

PTA +3.72T +3.36UDC +2.57FLC 78%R

GTPI +2384G

### Pine-Tree 2149 Robst 4846-ET

69804610 Very Good-85-USA 86-MS @2-7

### Amighetti Numero Uno-ET

ITA 17990915143 \*TV \*TL \*TY

PTA +740M +80F +37P 78%R 4/14

PTA +2.93T +2.82UDC +1.96FLC 77%R

GTPI +2423G

### Larcrest Comet-ETS

53766363 Very Good-87 DOM @ 3-01

GTPI+2076 +1441M +93F +51P +2.20T

2-02 2x 305d 28190 4.3 1205 3.3 921

• 10 daughters over +2300G

• Full sister to Larcrest Cancun at ABS

• Full sister to O-Cosmopolitan

### 3rd thru 6th Dams

**Larcrest Cosmopolitan VG-87 DOM**

2-04 2x 365d 30930 4.1 1261 3.6 1119

**Larcrest Oside Champagne-TW**

EX-90 GMD DOM

2-03 2x 365d 29110 4.5 1322 3.7 1077

• 17 sons in A.I. worldwide

**Larcrest Juror Chanel EX-93 3E GMD DOM**

9-00 2x 365d 48460 4.0 1943 3.4 1648

Life: 2899d 245420 4.3 10482 3.6 8866

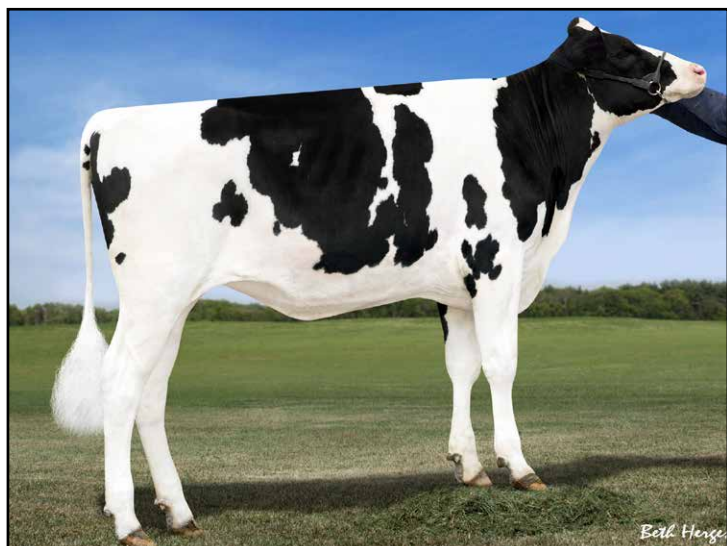
**Larcrest Lindy Chandra VG-85**

2-05 2x 365d 20896 4.8 993 3.8 803

**Larcrest Inspiration Carly VG-87**

3-05 2x 305d 21800 4.5 973 3.3 802





**PFAFFS CORNET-ET**  
DAM OF LOT 40



**MARKWELL BOLTON CARSYN-ET EX-90 EX-MS**  
2ND DAM OF LOT 40

**40**

## SIX #1 EMBRYOS

• Worldwide Export Available

### Holstein Plaza Contacts:

Steve Mower +1 240-520-5906

Jennifer Dingbaum +1 320-250-2412

### View-Home Monterey

69087180

PTA +1571M +83F +65P 74%R 4/14

PTA +5.8PL 2.90SCS +0.7DPR

PTA +3.74T +3.60UDC +2.33FLC 74%R

GTPI +2578

### Pfaffs Cornet-ET

142265664 Born: January 30, 2013

GTPI+2238 +2026M +71F +65P +3.02T

### De-Su Bkm McCutchen 1174-ET

69990138 \*TV \*TL \*TY \*TD

PTA +1277M +66F +51P 78%R 4/14

PTA +3.72T +3.36UDC +2.57FLC 78%R

GTPI +2384G

### Pine-Tree 2149Robst 4846

69804610 Very Good-85 VG-MS @ 2-07

### Amighetti Numero Uno-ET

ITA 17990915143 \*TV \*TL \*TY

PTA +740M +80F +37P 78%R 4/14

PTA +2.93T +2.82UDC +1.96FLC 77%R

GTPI +2423G

### Markwell Bolton Carsyn-ET \*TY

65724153 Excellent-90 EX-MS @ 4-07

4-05 2x 365d 37510 5.1 1898 3.6 1344

2-01 2x 365d 31750 4.3 1360 3.5 1117

### 3rd thru 7th Dams

#### Ralma 14-Carat Gold-ET

EX-90 GMD DOM

2-04 2x 365d 30002 4.6 1391 3.6 1069

#### Ralma Christmas Cookie-ET

VG-89 EX-MS DOM

2-06 2x 365d 28710 4.5 1297 3.4 967

#### Ralma Christmas Fudge-ET

VG-88 GMD DOM

2-03 2x 365d 31810 4.1 1292 3.2 1027

#### Ralma Juror Faith EX-91 GMD DOM

4-02 2x 365d 47860 4.5 2165 3.1 1497

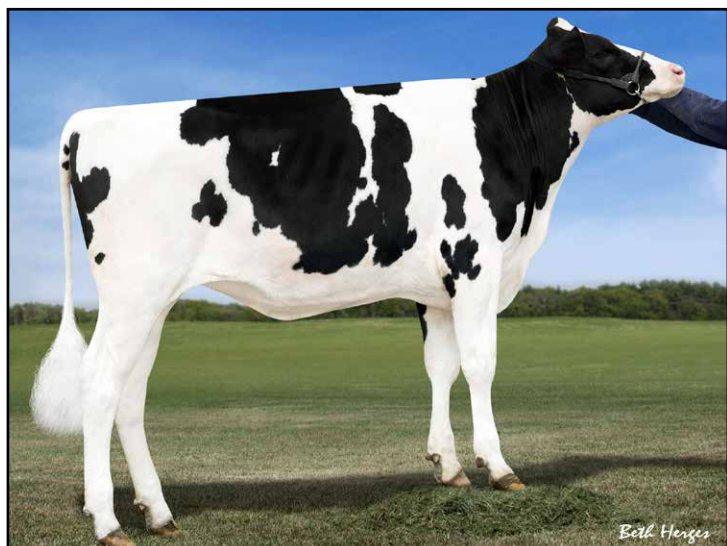
Life: 1352d 133520 4.5 5986 3.3 4358

#### Ralma Leadman Fashion VG-89

4-10 2x 365d 40710 3.7 1494 3.0 1232

Life: 1243d 117710 3.6 4295 3.2 3743





**PFAFFS CORNET-ET**  
DAM OF LOT 41



**MARKWELL BOLTON CARSYN-ET EX-90 EX-MS**  
2ND DAM OF LOT 41

**41**

## THREE #1 EMBRYOS

• Worldwide Export Available

### Holstein Plaza Contacts:

Steve Mower +1 240-520-5906

Jennifer Dingbaum +1 320-250-2412

### Larcrest Commander-ET

58591942 \*TV \*TL \*TY \*TD

PTA +1704M +85F +69P 73%R 4/14

PTA +4.7PL 2.73SCS +0.1DPR

PTA +3.25T +2.96UDC +2.51FLC 72%R

GTPI +2473G / GPA-LPI+3339 / RZG+155

### Pfaffs Cornet-ET

142265664 Born: January 30, 2013

GTPI+2238 +2026M +71F +65P +3.02T

### Mountfield SSI Dcy Mogul

3006972816 \*TV \*TL \*TY \*TD

PTA +1377M +79F +49P 78%R 4/14

PTA +2.81T +2.99UDC +2.78FLC 77%R

GTPI+2394G

### Larcrest Calinda-ET

70119330

### Amighetti Numero Uno-ET

ITA 17990915143 \*TV \*TL \*TY

PTA +740M +80F +37P 78%R 4/14

PTA +2.93T +2.82UDC +1.96FLC 77%R

GTPI +2423G

### Markwell Bolton Carsyn-ET \*TY

65724153 Excellent-90 EX-MS @ 4-07

4-05 2x 365d 37510 5.1 1898 3.6 1344

2-01 2x 365d 31750 4.3 1360 3.5 1117

### 3rd thru 7th Dams

#### Ralma 14-Carat Gold-ET

EX-90 GMD DOM

2-04 2x 365d 30002 4.6 1391 3.6 1069

#### Ralma Christmas Cookie-ET

VG-89 EX-MS DOM

2-06 2x 365d 28710 4.5 1297 3.4 967

#### Ralma Christmas Fudge-ET

VG-88 GMD DOM

2-03 2x 365d 31810 4.1 1292 3.2 1027

#### Ralma Juror Faith EX-91 GMD DOM

4-02 2x 365d 47860 4.5 2165 3.1 1497

Life: 1352d 133520 4.5 5986 3.3 4358

#### Ralma Leadman Fashion VG-89

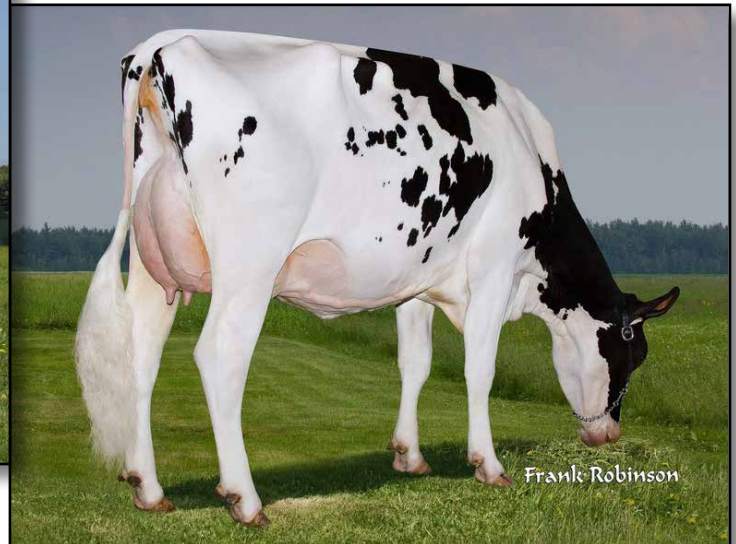
4-10 2x 365d 40710 3.7 1494 3.0 1232

Life: 1243d 117710 3.6 4295 3.2 3743





FILIALE OMAN SPAGHETTI VG-85-2YR  
DAM OF LOT 42



LESPERRON SHOTTLE SPLENDA EX-91-CAN 91-MS  
2ND DAM OF LOT 42

42

## SIX #1 EMBRYOS

• Worldwide Export Available

### Holstein Plaza Contacts:

Steve Mower +1 240-520-5906

Jennifer Dingbaum +1 320-250-2412

### De-Su Observer-ET

65917481 VG-88 \*TR \*TV \*TL \*TY \*TD  
PTA +1476M +50F +45P 99%R 4/14  
PTA +6.2PL 2.84SCS -0.4DPR  
PTA +2.70T +3.02UDC +0.41FLC  
GTPI +2168G

### Filiale Oman Spaghetti

10654226 Very Good-85-2YR VG-MS  
GTPI+2072 +546M +44F +34P +3.09T  
GLPI+2751 / Conf. +12  
1-11 2x 365d 26244 4.4 1142 3.5 919  
• Spaghetti has 3 offspring over +2300G  
• Dam to Filiale Spa @TAG  
• 1 Superior Lactation

### Ensenada Taboo Planet-ET

60597003 \*TY \*TR  
PTA +2105M +63F +62P 99%R 4/14  
PTA +1.73T +1.27UDC -0.57FLC  
GTPI +2073G

### De-Su Oman 6121-ET

61681442 Very Good-86 GMD DOM  
2-01 3x 365d 34770 4.3 1505 3.2 1108

### Long-Langs Oman Oman-ET

135746776 VG-85 GM \*TV \*TL \*TY  
PTA +1102M +74F +69P 99%R 4/14  
PTA +2.08T +1.78UDC +1.63FLC  
GTPI +2185G

### Lesperron Shottle Splenda

105523669C Excellent-91-CAN 91-MS 1\*  
5-09 2x 365d 43477 3.7 1605 3.2 1371  
2-01 2x 365d 29072 3.9 1142 3.2 970  
• 1 Superior Lactation

### 3rd thru 11th Dams

#### Maryclerc Morty Splendide

VG-86-2YR-CAN 15\*  
5-09 2x 365d 43477 3.7 1605 3.2 1371  
Gen-I-Beq Lee Spendide EX-90 2E CAN 17\*  
7-03 2x 365d 45459 4.3 1953 3.3 1506

#### Glen Drummond Splendor

VG-86-2YR-CAN 36\*  
4-10 2x 314d 26510 4.2 1124 3.2 840

#### Glen Drummond Aero Flower

VG-88-CAN 18\*  
2-03 2x 326d 25622 4.0 1032 3.4 882

#### Glen Drummond Shower EX-CAN 13\*

4-10 2x 365d 28583 4.8 1380 3.6 1016

#### Glen Drummond S C Jo Beth

EX-2E-CAN 7\*  
Life (6 Lacs): 141637 4.2 5994 3.2 3593

• Grand Champion Brant-Wentworth 1984

#### Glen Drummond Matt Beth VG-85 4\*

11-10 2x 365d 25038 3.7 935

Life (5 Lacs): 105953 4.1 4295

#### Glen Drummond Marquis Beth VG-CAN

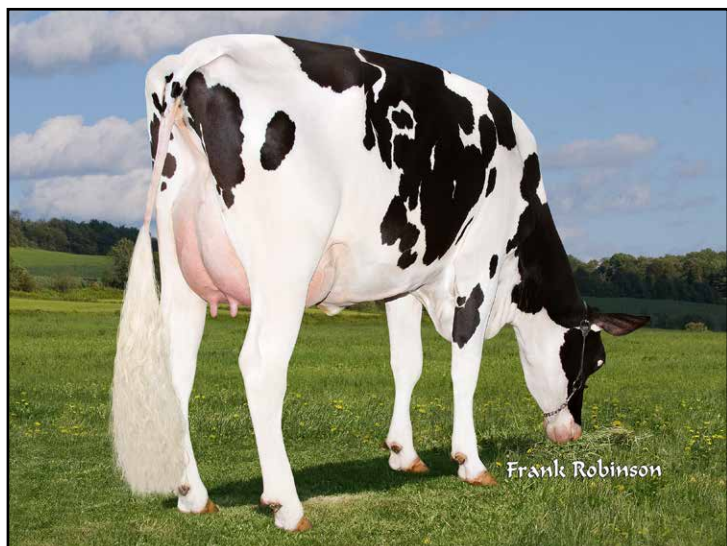
Life (8 Lacs): 112688 4.2 4766

#### Ferglynn Rag Apple Bertha VG-CAN 3\*

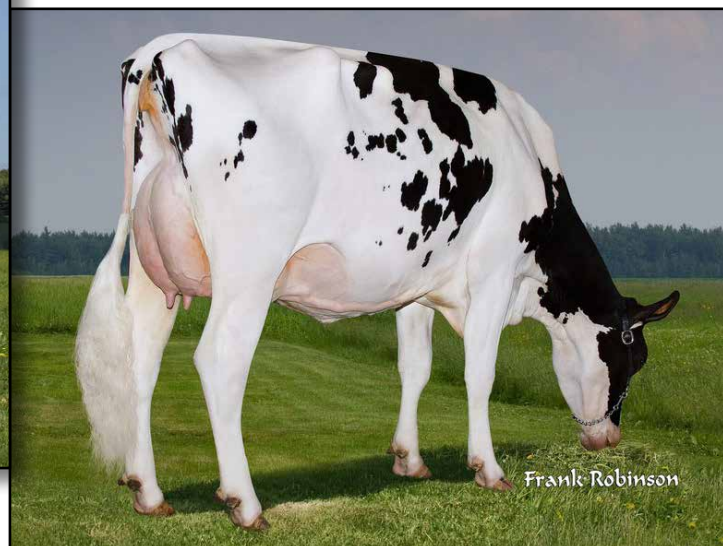
7-00 2x 365d 27796 4.7 1303

Life (9 Lacs): 208857 4.0 8344





**FILIALE OMAN SPAGHETTI VG-85-2YR**  
DAM OF LOT 43



**LESPERRON SHOTTLE SPLENDA EX-91-CAN 91-MS**  
2ND DAM OF LOT 43

**43**

## SIX #1 EMBRYOS

• Worldwide Export Available

### Holstein Plaza Contacts:

Steve Mower +1 240-520-5906

Jennifer Dingbaum +1 320-250-2412

### Mr Chassity Colt 45-ET

70476906 \*RC \*PO \*TV \*TL \*TY  
PTA +1002M +16F +24P 78%R 4/14  
PTA +396NM\$ +3.0PL 2.80SCS +0.2DPR  
PTA +2.99T +2.88UDC +2.80FLC 77%R  
GTPI +2020G

### Filiale Oman Spaghetti

10654226 Very Good-85-2YR VG-MS  
GTPI+2072 +546M +44F +34P +3.09T  
GLPI+2751 / Conf. +12  
1-11 2x 365d 26244 4.4 1142 3.5 919  
• Spaghetti has 3 offspring over +2300G  
• Dam to Filiale Spa @TAG  
• 1 Superior Lactation

### Sandy-Valley Colt P-Red-TW

68731810 \*PO \*TV \*TL \*TY \*TD  
PTA +439M -24F +21P 97%R 4/14  
PTA +1.86T +2.17UDC +1.74FLC 92%R  
GTPI +1859G

### Regancrest S Chassity-ET

62496899 Excellent-92 EEEVE DOM  
3-10 2x 365d 42280 4.3 1798 2.5 10700

### Long-Langs Oman Oman-ET

135746776 VG-85 GM \*TV \*TL \*TY  
PTA +1102M +74F +69P 99%R 4/14  
PTA +2.08T +1.78UDC +1.63FLC  
GTPI +2185G

### Lesperron Shottle Splenda

105523669C Excellent-91-CAN 91-MS 1\*  
5-09 2x 365d 43477 3.7 1605 3.2 1371  
2-01 2x 365d 29072 3.9 1142 3.2 970  
• 1 Superior Lactation

### 3rd thru 11th Dams

#### Maryclerc Morty Splendide

VG-86-2YR-CAN 15\*  
5-09 2x 365d 43477 3.7 1605 3.2 1371  
**Gen-I-Beq Lee Spendide** EX-90 2E CAN 17\*  
7-03 2x 365d 45459 4.3 1953 3.3 1506

#### Glen Drummond Splendor

VG-86-2YR-CAN 36\*  
4-10 2x 314d 26510 4.2 1124 3.2 840

#### Glen Drummond Aero Flower

VG-88-CAN 18\*  
2-03 2x 326d 25622 4.0 1032 3.4 882

#### Glen Drummond Shower EX-CAN 13\*

4-10 2x 365d 28583 4.8 1380 3.6 1016

#### Glen Drummond S C Jo Beth

EX-2E-CAN 7\*  
Life (6 Lacs): 141637 4.2 5994 3.2 3593

• Grand Champion Brant-Wentworth 1984

#### Glen Drummond Matt Beth VG-85 4\*

11-10 2x 365d 25038 3.7 935  
Life (5 Lacs): 105953 4.1 4295

#### Glen Drummond Marquis Beth VG-CAN

Life (8 Lacs): 112688 4.2 4766

#### Ferglynn Rag Apple Bertha VG-CAN 3\*

7-00 2x 365d 27796 4.7 1303  
Life (9 Lacs): 208857 4.0 8344





**ASTRAHOE STORMATIC RADIANT EX-91 2E GMD**  
2ND DAM OF LOT 44

**44**

**Holstein Plaza Contacts:**

Steve Mower +1 240-520-5906  
Jennifer Dingbaum +1 320-250-2412

**Morningview Mcc Kingboy-ET**

72044077 \*TV \*TL \*TY \*TD  
PTA +1927M +72F +63P 74%R 4/14  
PTA +846NM\$ +6.1PL 2.74SCS +1.8DPR  
PTA +3.92T +3.09UDC +2.85FLC 74%R  
GTPI +2602G

**Castleholm Radiants Abby**

69835862 Very Good-85 87-MS  
2-01 2x 365d 29430 3.4 991 3.4 1015  
• Potential 15th Generation Excellent

**THREE #1 EMBRYOS**

• Worldwide Export Available

**De-Su Bkm McCutchen 1174-ET**

69990138 \*TV \*TL \*TY \*TD  
PTA +1277M +66F +51P 78%R 4/14  
PTA +3.72T +3.36UDC +2.57FLC 78%R  
GTPI +2384G

**Morningview Super Megan**

68654508 Very Good-85 VG-MS  
2-01 3x 280d 22539 3.7 823 3.1 695 inc

**Maple-Downs-I G W Atwood-ET**

8956379C Very Good-87 \*TV \*TL \*TY \*TD  
PTA +294M +51F +15P 99%R 4/14  
PTA +4.66T +3.51UDC +3.74FLC 99%R  
GTPI +1942G

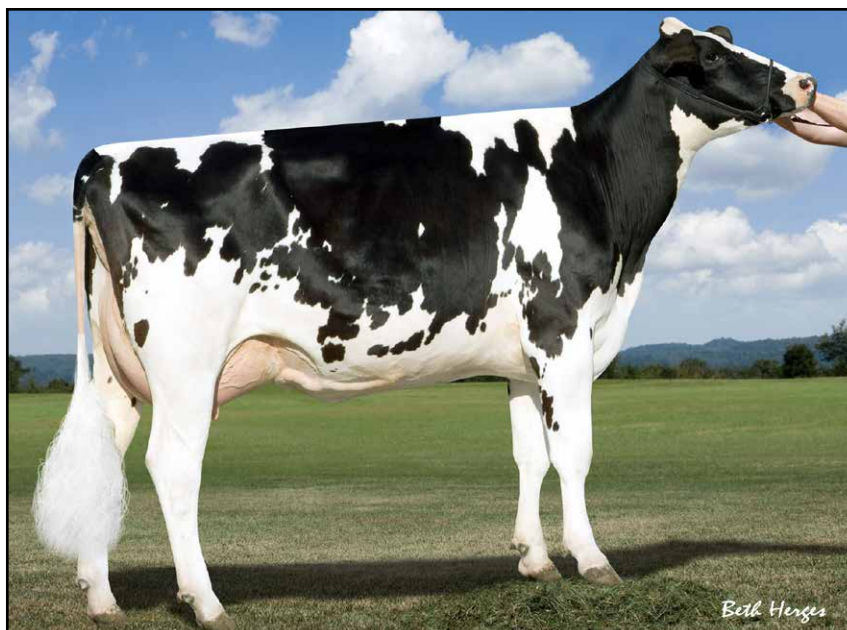
**Astrahoe Stormatic Radiant**

134908690 Excellent-91 2E GMD  
5-02 3x 365d 49840 4.2 2087  
2-03 3x 305d 36440 3.9 1416 3.1 1133  
3-05 3x 365d 36260 3.7 1356 3.6 1313

**3rd thru 15th Dams**

**Astrahoe LJ Rosa Rebel EX-92 2E**  
7-05 2x 365d 48580 4.2 2021 3.0 1468  
**Pinehurst Royal Rosa-ET EX-91 2E**  
3-10 3x 365d 41395 3.3 1358 2.8 1145  
Life: 1212d 115400 3.5 4073 3.1 3593  
**Pinehurst Roulade EX-92 EEEEE 2E**  
5-00 3x 365d 35130 3.6 1271 3.2 1115  
Life: 1761d 142070 3.8 5395 3.3 4705  
**Pinehurst Sweet Cleo EX-90 EEEVEV**  
6-00 3x 365d 40380 4.4 1776 3.2 1305  
**Pinehurst Sweet Freedom EX-90 VEVE**  
5-07 3x 330d 34520 4.3 1500 3.1 1084  
**Pinehurst Sweet Delite EX-91 3E GMD**  
8-10 3x 365d 28460 4.2 1194 3.2 917  
Life: 2228d 151600 4.0 6116 3.2 4907  
**Pinehurst Rapture EX-96 4E GMD**  
8-02 3x 365d 30370 4.2 1290 3.1 948  
Life: 2297d 160790 3.9 6337 3.0 2469  
**Pinehurst Fragrance EX-90 2E**  
4-8 3x 365d 34490 3.6 1234  
**Hayssen Fond Ariel EX-90 2E**  
8-06 2x 328d 23330 3.2 753  
**Hayssen D V Audrey EX-90 2E**  
9-03 2x 365d 23670 4.4 1035  
**Whirlhill Q Rag Apple Ariel EX-92**  
6-02 2x 365d 26755 4.2 1134  
**Arlite Posch EX-92 GMD**  
5-03 2x 365d 21193 3.7 779  
**Audrey Posch EX-93 GMD**  
14-2 2x 365d 25572 3.7 948





**BRIGEEN SHOTTLE GIGI EX-90 91-MS**  
DAM OF LOT 45

45

## FIVE #1 EMBRYOS

• Worldwide Export Available

### Holstein Plaza Contacts:

Steve Mower +1 240-520-5906

Jennifer Dingbaum +1 320-250-2412

### L-L-M-Dairy President-ET

71640112 \*TY

PTA +1570M +75F +57P 74%R 4/14

PTA 6.6PL 2.70SCS +2.2DPR

PTA +2.99T +2.70UDC +2.09FLC 74%R

GTPI +2506G

### Brigeen Shottle Gigi

68763023 Excellent-90 91-MS

GTPI+1914 +1189M +40F +30P +2.18T

3-02 3x 234d 28840 4.0 1153 3.0 874 inc.

1-11 3x 365d 36535 3.4 1233 2.9 1063

Maternal sister to Shottle Gigi

**B-Enterprise Super Gigi-ET VG-86 VG-MS**

GTPI+2249 +2074M +37F +53P +3.21T

• 7 daughters over +2400G

### Amighetti Numero Uno-ET

ITA 17990915143 \*TV \*TL \*TY

PTA +740M +80F +37P 78%R 4/14

PTA +2.93T +2.82UDC +1.96FLC 77%R

GTPI +2423G

### L-L-M-Dairy Million Prize

68756740 Very Good-85

2-03 2x 365d 26070 4.3 1126 3.1 811

### Picston Shottle-ET

GBR 598172 EX-95 GM 12/11 \*TV \*TL \*TY

PTA +885M +45F +24P 99%R 4/14

PTA +2.29T +1.84UDC +1.58FLC

GTPI +1929G

### Brigeen Outside Gigi

63427543 Excellent-90 2E GMD DOM

2-00 2x 365d 34280 3.9 1321 2.9 992

3-07 2x 365d 40750 3.8 1565 2.9 1183

5-08 2x 365d 60160 4.2 2522 2.9 1766

Life: 1578d 167080 4.0 6600 3.0 4949

### 3rd thru 7th Dams

**Brigeen Aer Gwyneth EX-93 2E GMD DOM**

6-05 2x 365d 48150 3.3 1567 2.8 1371

Life: 2094d 219870 3.3 7288 2.9 6372

**Brigeen Integrity Gwen VG-86 GMD**

3-07 2x 365d 39520 3.8 1518 2.8 1102

Life: 1478d 122980 3.6 4368 2.9 3536

**Roylane Leadman Glory VG-89 GMD DOM**

2-00 2x 365d 30880 3.6 1127 3.1 952

**Western-Cascade Mark Bella**

EX-91 GMD DOM

3-06 2x 365d 36360 3.7 1354 3.0 1041

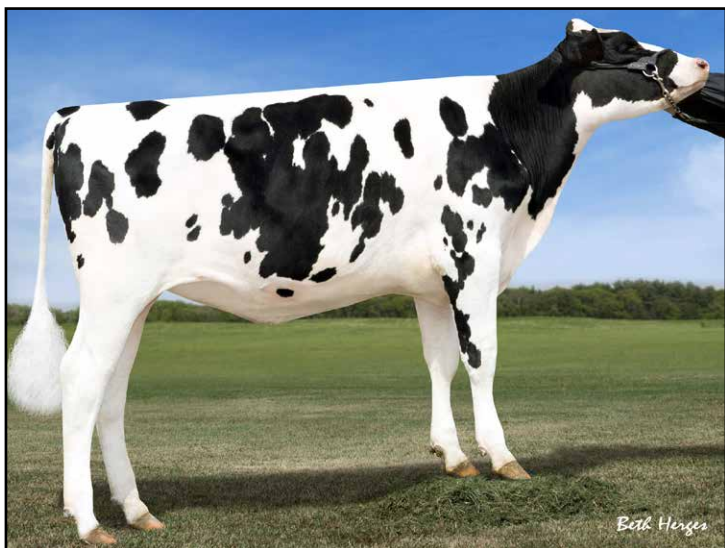
**Western-Cascade Bell Glory**

EX-90 2E GMD DOM

7-10 2x 305d 34830 3.3 1155 3.0 1037

Life: 1525d 139210 3.6 5018 3.1 4295





**SPEEK-NJ CHOCOLATE CHIP-ET**  
DAM OF LOT 46



**LARCREST CREDIT-ET VG-85-2YR**  
2ND DAM OF LOT 46

**46**

## TWO #1 EMBRYOS

- Worldwide Export Available

### Holstein Plaza Contacts:

Steve Mower +1 240-520-5906

Jennifer Dingbaum +1 320-250-2412

### Clear-Echo Lexor Racer-ET

71974211 \*TV \*TL \*TY

PTA +1604M +69F +64P 73%R 4/14

PTA +874NM\$ +6.0PL 2.57SCS +1.7DPR

PTA +2.83T +2.82UDC +1.96FLC 73%R

GTPI +2502G / gRZG+157

### Speek-NJ Chocolate Chip-ET

71619118

Born: January 10, 2013

GTPI+2210 +1756M +76F +56P +1.54T

*Maternal sisters to Chocolate Chip*

### Speek-NJ Predest Crumpet-ET

GTPI+2554 +1004NM\$ +2.59T

Speek-NJ-I Supersire Calypso

GTPI+2448 +880NM\$ 2.37T

Speek-NJ Predest Cutie-ET

GTPI+2422 +867NM\$ +2.46T

### Generations Lexor

11098658C \*TV \*TL

PTA +1308M +86F +68P 77%R 4/14

PTA +2.50T +1.70UDC +2.18FLC 77%R

GTPI +2281G

### Clear-Echo Observer 2280-ET

68669880 Good Plus-84

2-01 3x 280d 22539 3.7 823 3.1 695

### Cabon Fernand

FRA 2941261203 \*TV \*TL \*TY

PTA +1301M +94F +57P 76%R 4/14

PTA +2.12T +1.90UDC +1.82FLC 75%R

GTPI +2230G

### Larcrest Credit-ET

56265392 Very Good-85 @ 2-11

GTPI+2221 +1927M +73F +56P +2.05T

2-06 2x 181d 18774 3.7 649 3.3 615 inc.

- sired by: Badger-Bluff Fanny Freddie

### 3rd thru 7th Dams

**Larcrest Comet-ETS VG-87 DOM**

2-02 2x 305d 28190 4.3 1205 3.3 921

- Full sister to Larcrest Cancun at ABS

- Full sister to O-Cosmopolitan

**Larcrest Cosmopolitan VG-87 DOM**

2-04 2x 365d 30930 4.1 1261 3.6 1119

**Larcrest Oside Champagne-TW**

EX-90 GMD DOM

2-03 2x 365d 29110 4.5 1322 3.7 1077

- 17 sons in A.I. worldwide

**Larcrest Juror Chanel EX-93 3E GMD DOM**

9-00 2x 365d 48460 4.0 1943 3.4 1648

Life: 2899d 245420 4.3 10482 3.6 8866

**Larcrest Lindy Chandra VG-85**

2-05 2x 365d 20896 4.8 993 3.8 803

**Larcrest Inspiration Carly VG-87**

3-05 2x 305d 21800 4.5 973 3.3 802



**GBM KAM GOLDWYN LUCKY-ET EX-92 EX-MS 2E  
DAM OF LOT 47**



## FOUR #1 EMBRYOS

• Worldwide Export Available

### Holstein Plaza Contacts:

Steve Mower +1 240-520-5906

Jennifer Dingbaum +1 320-250-2412

### Sonnek GC Corvette-ET

71391400 \*TV \*TL \*TY \*TD

PTA +450M +29F +20P 76%R 4/14

PTA +1.1PL 2.64SCS -0.4DPR

PTA +4.17T +3.15UDC +4.03FLC 76%R

GTPI +2085G

### GBM Kam Goldwyn Lucky-ET

138128809 Excellent-92 EEEEE 2E

5-03 2x 365d 35200 3.9 1363 3.2 1143

3-07 2x 365d 30210 4.3 1298 3.2 971

2-05 2x 365d 24020 4.8 1150 3.1 756

### Mr Chassity Gold Chip-ET

140145553 100%RHA-NA \*TR \*TV \*TL

PTA +211M +23F +0P 94%R 4/14

PTA +3.70T +3.31UDC +3.16FLC 89%R

GTPI +1996G

### Sonnek Damion Charlie-ET

138545776 Excellent-94 EEEEE

3-04 2x 365d 26240 4.0 1050 3.5 992

### Braedale Goldwyn

CAN 10705608 GP-CAN EX'05 \*TV \*TL

PTA -9M +31F +13P 99%R 4/14

PTA +2.80T +2.45UDC +2.36FLC

GTPI +1879G

### Mega-Gold Astre Brea-ET

15727340 Excellent-93 EEEEE 3E

8-02 2x 365d 30790 3.5 1067 3.0 934

4-10 2x 365d 27330 4.1 1125 3.3 905

6-02 2x 365d 26620 3.9 1041 3.2 848

Life: 2489d 178120 3.7 6610 3.2 5687

### 3rd & 4th Dams

**Mega-Gold Barbs Brilliance VG-87**

3-07 2x 365d 29010 4.0 1152 3.2 928

Life: 1319d 102650 3.9 4017 3.2 3299

**Hilltop-Retreat Banner Barb**

EX-90 EEEVV @ 5-02

3-07 2x 365d 30120 3.4 1034 3.1 948

Life: 1388d 103920 3.6 3720 3.1 3270





**GBM SHOTTLE JOSETTA EX-92 EX-MS**  
DAM OF LOT 48

**48**

## FOUR #1 EMBRYOS

• Worldwide Export Available

### Holstein Plaza Contacts:

Steve Mower +1 240-520-5906

Jennifer Dingbaum +1 320-250-2412

**SEXED**  
semen

### Maple-Downs-I G W Atwood-ET (SEXED)

8956379C Very Good-87 \*TV \*TL \*TY \*TD  
PTA +294M +51F +15P 99%R 4/14  
PTA +219NM\$ +1.0PL 2.97CS -2.5DPR  
PTA +4.66T +3.51UDC +3.74FLC 99%R  
GTPI +1942G

### GBM Shottle Josetta-ET

140324453 Excellent-92 EEVEE  
3-07 2x 365d 30840 3.1 949 3.2 1001  
2-06 2x 357d 25480 3.6 915 3.2 849

### Braedale Goldwyn

CAN 10705608 GP-CAN EX'05 \*TV \*TL  
PTA -9M +31F +13P 99%R 4/14  
PTA +2.80T +2.45UDC +2.36FLC  
GTPI +1879G

### MD-Delight Durham Atlee-ET

131704103 Excellent-92 EEEEE DOM  
3-11 2x 365d 38290 5.5 2091 3.1 1177  
• All-American Senior 3-Year-Old 2005

### Picston Shottle-ET

GBR 598172 EX-95 GM 12/11 \*TV \*TL \*TY  
PTA +885M +45F +24P 99%R 4/14  
PTA +2.29T +1.84UDC +1.58FLC  
GTPI +1929G

### GBM Durham Bstar Josie-ET

132566027 Excellent-93 EX-MS 2E \*CV  
5-08 2x 365d 34750 4.2 1447 3.1 1060  
8-01 2x 365d 31570 4.5 1412 3.2 1015  
Life: 2690d 185910 4.1 7705 3.4 6314

### 3rd thru 6th Dams

#### GBM Val Blackstar Jean-ET EX-94 3E GMD

8-05 2x 365d 37180 3.9 1458 3.0 1119  
Life: 3127d 238190 4.1 9734 3.4 8000

#### GBM Valiant Janice EX-92 2E DOM

5-09 2x 365d 30860 3.5 1080 3.1 948  
Life: 2100d 126200 3.5 4437 3.2 3996

#### Sylvan-Dell M C Janice EX-91 2E DOM

6-03 2x 314d 29600 3.9 1152

#### Sylvan-Dell Atlas Jill EX-90 2E

4-06 2x 305d 20820 3.5 717



**GBM SHOTTLE JOSETTA EX-92 EX-MS**  
DAM OF LOT 49

49

## FIVE #1 EMBRYOS

- Worldwide Export Available

### Holstein Plaza Contacts:

Steve Mower +1 240-520-5906

Jennifer Dingbaum +1 320-250-2412

### Mr Apples Armani \*RC

68571374 \*TV \*TL \*TY \*TD

PTA -640M +61F +18P 78%R 4/14

PTA +498NM\$ +2.8PL 2.86SCS +1.2DPR

PTA +3.37T +3.07UDC +3.18FLC 78%R

GTPI +2147G

### GBM Shottle Josetta-ET

140324453 Excellent-92 EEVEE

3-07 2x 365d 30840 3.1 949 3.2 1001

2-06 2x 357d 25480 3.6 915 3.2 849

### Braedale Goldwyn

CAN 10705608 GP-CAN EX'05 \*TV \*TL

PTA -9M +31F +13P 99%R 4/14

PTA +2.80T +2.45UDC +2.36FLC

GTPI +1879G

### KHW Regiment Apple-Red-ET

135511521 Excellent-96 DOM

4-01 2x 365d 35750 4.7 1682 3.7 1314

- Grand Champion, Grand Int'l Re&W Show

### Picston Shottle-ET

GBR 598172 EX-95 GM 12/11 \*TV \*TL \*TY

PTA +885M +45F +24P 99%R 4/14

PTA +2.29T +1.84UDC +1.58FLC

GTPI +1929G

### GBM Durham Bstar Josie-ET

132566027 Excellent-93 EX-MS 2E \*CV

5-08 2x 365d 34750 4.2 1447 3.1 1060

8-01 2x 365d 31570 4.5 1412 3.2 1015

Life: 2690d 185910 4.1 7705 3.4 6314

### 3rd thru 6th Dams

**GBM Val Blackstar Jean-ET EX-94 3E GMD**

8-05 2x 365d 37180 3.9 1458 3.0 1119

Life: 3127d 238190 4.1 9734 3.4 8000

**GBM Valiant Janice EX-92 2E DOM**

5-09 2x 365d 30860 3.5 1080 3.1 948

Life: 2100d 126200 3.5 4437 3.2 3996

**Sylvan-Dell M C Janice EX-91 2E DOM**

6-03 2x 314d 29600 3.9 1152

**Sylvan-Dell Atlas Jill EX-90 2E**

4-06 2x 305d 20820 3.5 717





**FARNEAR BROCADE BRESHA GP-81-2YR**  
DAM OF LOT 50



**REGANCREST G BROCADE-ET EX-92 EEEEE DOM**  
2ND DAM OF LOT 50

**50**

## SIX #1 EMBRYOS

• Worldwide Export Available

### Holstein Plaza Contacts:

Steve Mower +1 240-520-5906

Jennifer Dingbaum +1 320-250-2412

### Mr Chassity Colt 45-ET

70476906 \*RC \*PO \*TV \*TL \*TY  
PTA +1002M +16F +24P 78%R 4/14  
PTA +396NM\$ +3.0PL 2.80SCS +0.2DPR  
PTA +2.99T +2.88UDC +2.80FLC 77%R  
GTPI +2020G

### Farnear Brocade Breesha-ET

70477028 Good Plus-81-2YR  
GTPI+2018 +2.84T +2.70UDC +2.32FLC

### Sandy-Valley Colt P-Red-TW

68731810 \*PO \*TV \*TL \*TY \*TD  
PTA +439M -24F +21P 97%R 4/14  
PTA +1.86T +2.17UDC +1.74FLC 92%R  
GTPI +1859G

### Regancrest S Chassity-ET

62496899 Excellent-92 EEEVE DOM  
3-10 2x 365d 42280 4.3 1798 2.5 1070

### De-Su 521 Bookem-ET

66636657 \*TR \*TV \*TL \*TY \*TD  
PTA +1452M +44F +54P 98%R 12/13  
PTA +2.79T +2.27UDC +1.72FLC 82%R  
GTPI +2257G

### Regancrest G Brocade-ET

62496933 Excellent-92 EEEEE DOM  
4-00 2x 365d 38890 3.9 1517 3.5 1346  
2-01 2x 365d 32680 3.9 1278 3.4 1126

• Several sons in A.I.

### 3rd thru 9th Dams

#### Regancrest-PR Barbie-ET

EX-92 GMD DOM  
2-06 2x 365d 31690 3.9 1237 3.1 990  
• HM All-American Junior 3-Yr Old 2004  
• Former #1 Type Cow

#### Regancrest Juror Brina-ET EX-92 GMD

4-04 2x 365d 40640 3.6 1478 2.8 1140  
• Member Nom AA Best 3 Females 2000  
• Res Grand Champ Iowa State Show 2000

#### Regancrest Aerostar Bert-ET

EX-90 GMD DOM  
5-02 2x 365d 37790 3.6 1357 3.0 1143  
Life: 1305d 109350 3.7 4031 3.1 3350

#### Regancrest Mark Chairman Bea

EX-91 2E GMD  
7-09 2x 365d 33630 3.8 1276 2.9 988  
Life: 2036d 140130 4.1 5711 3.1 4350

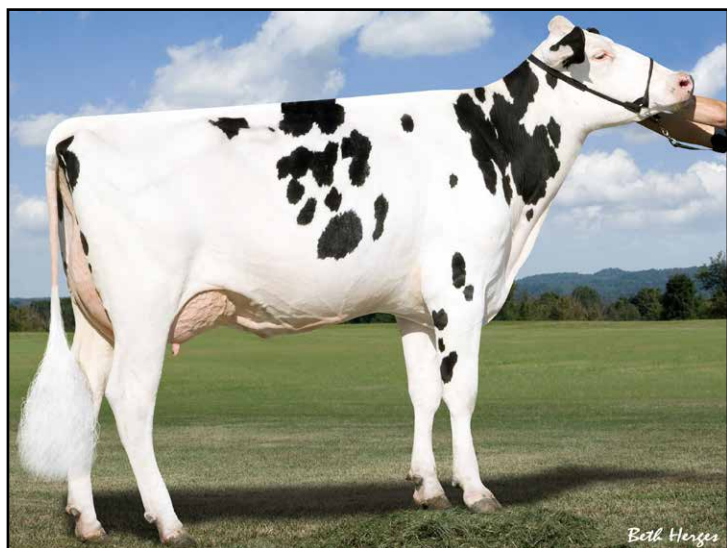
#### Regancrest Board Chairman Bea EX-90

5-09 2x 365d 26010 4.1 1059 3.2 835  
Regancrest Apache Standout Bea VG-86  
4-10 2x 320d 19070 4.0 766

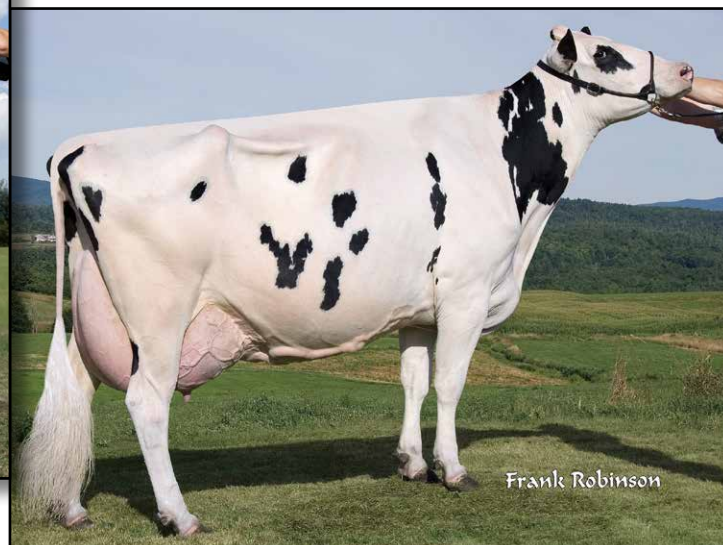
Life: 2432d 131940 3.6 4744

#### Regancrest Standout Bertrand VG-85

4-01 2x 355d 17460 3.3 571



**MS MILKSOURCE BLT REGINA-ET EX-90  
DAM OF LOT 51**



**BRIGEEN CONVINCER RHONDA EX-95 2E GMD DOM  
3RD DAM OF LOT 51**

**51**

**Holstein Plaza Contacts:**

Steve Mower +1 240-520-5906  
Jennifer Dingbaum +1 320-250-2412

**KHW Anaheim-ET \*RC**

142006450 \*CV \*TL \*TY \*TD  
PTA +429M +65F +26P 75%R 4/14  
PTA +721NM\$ +5.8PL 2.69SCS +2.2DPR  
PTA +3.46T +3.16UDC +3.02FLC 74%R  
GTPI +2363G

**Ms Milksource Blt Regina-ET**

66681439 Excellent-90  
2-04 3x 328d 36186 4.4 1596 3.0 1081  
• 6th Generation EX in a row  
• 12th Generation VG or EX from the Roxys

**FIVE #1 EMBRYOS**

• Worldwide Export Available

**Amighetti Numero Uno-ET**

ITA 17990915143 \*TV \*TL \*TY  
PTA +740M +80F +37P 78%R 4/14  
PTA +2.93T +2.82UDC +1.96FLC 77%R  
GTPI +2423G

**Kamps-Hollow Altitude-ET**

129136431 Excellent-95 2E DOM  
07-00 2x 365d 39690 4.7 1849 3.3 1310

**Sandy-Valley Bolton-ET**

131823833 Excellent-90 GM 8/10 \*TV \*TL  
PTA +1863M +68F +49P 99%R 4/14  
PTA +2.43T +2.38UDC +1.90FLC  
GTPI +1943G

**Brigeen Shottle Rhonda-ET**

137155989 Excellent-90 92-MS  
5-05 2x 252d 34480 3.2 1109 3.0 1041  
2-09 2x 365d 33860 3.8 1290 3.2 1090

**3rd thru 12th Dams**

**Brigeen Convincer Rhonda**

EX-95 2E GMD DOM  
4-10 2x 365d 66420 4.3 2839 3.1 2069  
Life: 1663d 208350 4.3 9001 3.1 6449  
• Grand Champion, Maine State Show 2007

**Brigeen Emory Raisa EX-92 DOM**

4-07 2x 365d 29641 4.1 1203 3.3 983  
• Grand Champion Maine State Show 2004

**Brigeen-C Integrit Robin-ET**

EX-95 EEEEE 2E DOM  
5-02 2x 365d 39975 4.2 1683 3.1 1238

**C Haselmere Prelude Rhoda EX-91 3E**

5-11 2x 365d 34100 4.6 1555 3.3 1140  
Life: 2819d 197830 4.6 9181 3.4 6816

**Brigeen Southwind Rhonda-ET**

VG-88 EX-MS 2\*  
6-06 2x 365d 29844 4.3 1283 3.4 1008

**Mil-R-Mor SWD Rockette VG-86**

5-09 2x 365d 29361 4.2 1230 3.6 1045

**Mil-R-Mor Toprox-ET**

EX-94 3E GMD DOM  
9-00 2x 365d 43660 5.3 2297 3.6 1574

**C Glenridge Citation Roxy EX-97 4E GMD**

10-1 2x 365d 25280 4.2 1060  
Life: 3620d 209784 4.5 9471

• Queen of the Breed I and II

**C Norton Court Model Vee EX-90**

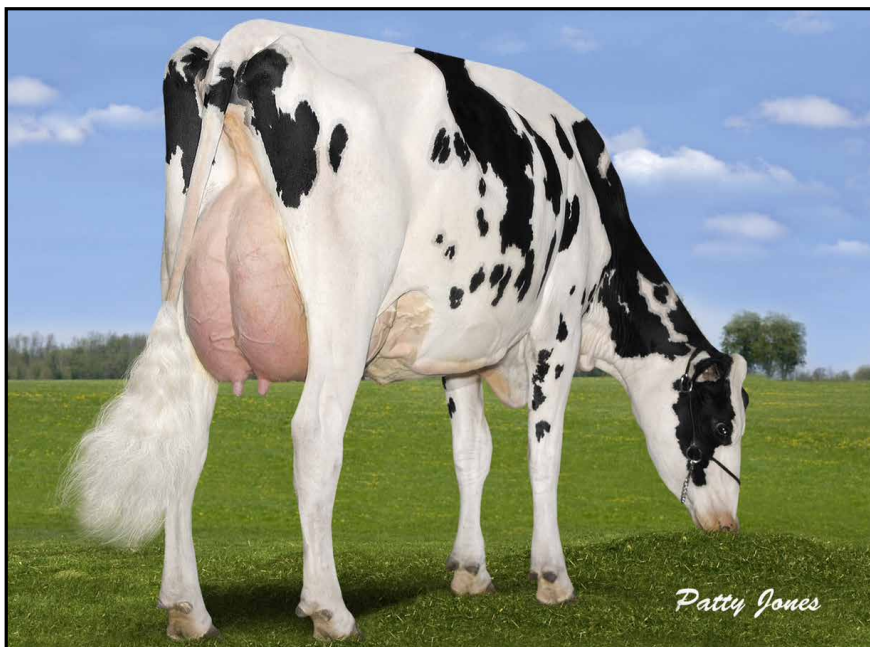
6-06 2x 365d 22483 3.9 875  
Life: 4183d 218629 3.9 8581

• All-American Produce of Dam 1977, '78, '79

**Norton Court Reflection Vale VG-85-CAN 5\***

8-11 2x 332d 20631 3.7 765  
Life (14 Lacs): 249583 3.7 9295





**ARROWHEAD MOM LICKY GP-84-2YR-CAN  
DAM OF LOT 52**

**52**

## SIX #1 EMBRYOS

• *Worldwide Export Available*

### **Holstein Plaza Contacts:**

Steve Mower +1 240-520-5906

Jennifer Dingbaum +1 320-250-2412

### **Morningview Mcc Kingboy-ET**

72044077 \*TV \*TL \*TY \*TD

PTA +1927M +72F +63P 74%R 4/14

PTA +846NM\$ +6.1PL 2.74SCS +1.8DPR

PTA +3.92T +3.09UDC +2.85FLC 74%R

GTPI +2602G

### **Arrowhead Mom Licky**

140962499C Good Plus-84-2YR-CAN VG-MS

GLPI+2685 / Conf. +8

2-00 2x 365d 28087 3.5 983 3.3 937

### **De-Su Bkm McCutchen 1174-ET**

69990138 \*TV \*TL \*TY \*TD

PTA +1277M +66F +51P 78%R 4/14

PTA +3.72T +3.36UDC +2.57FLC 78%R

GTPI +2384G

### **Morningview Super Megan**

68654508 Very Good-85 VG-MS

2-01 3x 280d 22539 3.7 823 3.1 695 inc.

### **Long-Langs Oman Oman-ET**

135746776 VG-85 GM \*TV \*TL \*TY

PTA +1102M +74F +69P 99%R 4/14

PTA +2.08T +1.78UDC +1.63FLC

GTPI +2185G

### **Bonaccueil F B I Linu**

104475277C Very Good-88-5YR-CAN 1\*

5-04 2x 365d 32712 3.8 1254 3.1 1014

2-00 2x 365d 25992 3.7 952 3.2 822

• *1st Jr Yearling, Simcoe 2008*

### **3rd thru 7th Dams**

**Comestar Liane Stormatic VG-87-5YR 8\***

5-03 2x 365d 45170 4.3 1933 3.1 1396

• *1st 5-Yr-Old Belle Chasse 2008*

**Oconnors TVF Rudolph Lilly VG-88 35\***

7-02 2x 365d 57426 3.7 2134 3.2 1858

**Comestar Laura Black-ET VG-87-3YR 24\***

4-04 2x 352d 33085 3.5 525 3.3 1089

**Comestar Laurie Sheik-ET VG-88-CAN 23\***

6-09 2x 365d 29864 4.5 1329 3.4 1016

Life (4 Lacs): 106564 4.5 4780 3.6 3885

• *HM All-Canadian Sr 2 Yr Old Cow 1989*

• *HM All-American Sr 2 Yr Old Cow 1989*

**Elysa Anthony Lea EX-CAN 15\***

6-02 2x 365d 35770 3.9 1398 2.9 1049

Life (3 Lacs): 109580 4.0 4334 3.1 3439



**SPEEK-NJ FER BING CROSBY-ET**  
DAM OF LOT 53



**LARCREST COMET-ETS VG-87 DOM**  
2ND DAM OF LOT 53

**53**

## TWO #1 AND TWO #2 EMBRYOS

• Worldwide Export Available

### Holstein Plaza Contacts:

Steve Mower +1 240-520-5906

Jennifer Dingbaum +1 320-250-2412

### Morningview Mcc Kingboy-ET

72044077 \*TV \*TL \*TY \*TD

PTA +1927M +72F +63P 74%R 4/14

PTA +846NM\$ +6.1PL 2.74SCS +1.8DPR

PTA +3.92T +3.09UDC +2.85FLC 74%R

GTPI +2602G

### Speek-NJ Fer Bing Crosby-ET

71619109 Born: January 8, 2013

GTPI+2216 +1126M +92F +49P +2.53T

Maternal sister to Bing Crosby

### Larcrest Credit-ET VG-85 DOM

GTPI+2221 +1927M +73F +56P +2.05T

2-06 2x 181d 18774 3.7 649 3.3 615 inc.

• Sired by: Badger-Bluff Fanny Freddie

### De-Su Bkm McCutchen 1174-ET

69990138 \*TV \*TL \*TY \*TD

PTA +1277M +66F +51P 78%R 4/14

PTA +3.72T +3.36UDC +2.57FLC 78%R

GTPI +2384G

### Morningview Super Megan

68654508 Very Good-85 VG-MS

2-01 3x 280d 22539 3.7 823 3.1 695 inc.

### Cabon Fernand

FRA 2941261203 \*TV \*TL \*TY

PTA +1301M +94F +57P 76%R 4/14

PTA +2.12T +1.90UDC +1.82FLC 75%R

GTPI +2230G

### Larcrest Comet-ETS

53766363 Very Good-87 DOM @ 3-01

GTPI+2076 +1441M +93F +51P +2.20T

2-02 2x 305d 28190 4.3 1205 3.3 921

• 10 daughters over +2300G

• Full sister to Larcrest Cancun at ABS

• Full sister to O-Cosmopolitan

### 3rd thru 6th Dams

#### Larcrest Cosmopolitan VG-87 DOM

2-04 2x 365d 30930 4.1 1261 3.6 1119

#### Larcrest Oside Champagne-TW

EX-90 GMD DOM

2-03 2x 365d 29110 4.5 1322 3.7 1077

• 17 sons in A.I. worldwide

#### Larcrest Juror Chanel EX-93 3E GMD DOM

9-00 2x 365d 48460 4.0 1943 3.4 1648

Life: 2899d 245420 4.3 10482 3.6 8866

#### Larcrest Lindy Chandra VG-85

2-05 2x 365d 20896 4.8 993 3.8 803

#### Larcrest Inspiration Carly VG-87

3-05 2x 305d 21800 4.5 973 3.3 802





SNOWBIZ SYMPATICO SAL \*RC  
DAM OF LOT 54



GEN-I-BEQ SNOWMAN SUMMER \*RC VG-85-2YR  
2ND DAM OF LOT 54

54

**Holstein Plaza Contacts:**

Steve Mower +1 240-520-5906  
Jennifer Dingbaum +1 320-250-2412

**Morningview Mcc Kingboy-ET**

72044077 \*TV \*TL \*TY \*TD  
PTA +1927M +72F +63P 74%R 4/14  
PTA +846NM\$ +6.1PL 2.74SCS +1.8DPR  
PTA +3.92T +3.09UDC +2.85FLC 74%R  
GTPI +2602G

**Snowbiz Sympatico Sal \*RC \*BYF**

108251026 Born: May 16, 2013  
GTPI+2332 +1509M +65F +45P +2.73T

Full sister to Sal

**Snowbiz Sympatico Sofia-Red-ET**

GTPI+2477 +2089M +82F +69P +3.41T  
• #1 GTPI, GLPI and RZG Red in the World  
• Sold for \$195,000 HP Online Heifer Sale  
**Snowbiz Ladd P Sunshine \*RC \*PO**  
GTPI+2375 +852M +65F +48P +3.11T  
• #1 GTPI \*RC \*PO in the World  
• Sold for \$200,000 on the Snowbiz Sale

## TWO #2 IVF EMBRYOS

• Eligible for shipment to the U.S. and export to EU and China

**De-Su Bkm McCutchen 1174-ET**

69990138 \*TV \*TL \*TY \*TD  
PTA +1277M +66F +51P 78%R 4/14  
PTA +3.72T +3.36UDC +2.57FLC 78%R  
GTPI +2384G

**Morningview Super Megan**

68654508 Very Good-85 VG-MS  
2-01 3x 280d 22539 3.7 823 3.1 695 inc.

**Dymentholm S Sympatico \*RC**

11004723 \*TV \*TL \*TY  
PTA +1974M +81F +57P 76%R 4/14  
PTA +2.64T +2.12UDC +1.85FLC 75%R  
GTPI +2265G

**Gen-I-Beq Snowman Summer \*RC \*BY**

106807371C VG-85-2YR-CAN VG-MS  
GTPI+2234 +1746M +66F +54P +2.91T  
2-01 2x 239d 19769 3.5 697 3.0 597 inc.  
• Sympatico son to Semex

**3rd thru 12th Dams**

**Gen-I-Beq Bolton Secretly \*RC**

VG-87-CAN 1\*  
2-01 2x 365d 30474 4.4 1327 3.4 1043

• 1 Superior Lactation

**Gen-I-Beq Goldwyn Secret VG-87-CAN 7\***

5-05 2x 365d 30573 4.5 1389 3.4 1038

**Gen-I-Beq Durham Sherry VG-87-CAN 8\***

5-02 2x 365d 40036 3.9 1574 3.2 1268

**Glen Drummond Splendor**

VG-86-2YR-CAN 37\*  
4-10 2x 314d 26510 4.2 1124 3.2 840

**Glen Drummond Aero Flower**

VG-88-CAN 18\*  
2-03 2x 326d 25622 4.0 1032 3.4 882

**Glen Drummond Shower EX-CAN 14\***

4-10 2x 365d 28583 4.8 1380 3.6 1016

**Glen Drummond S C Jo Beth**

EX-2E-CAN 7\*  
Life (6 Lacs): 141637 4.2 5994 3.2 3593

• Grand Champion Brant-Wentworth 1984

**Glen Drummond Matt Beth VG-85 4\***

11-10 2x 365d 25038 3.7 935  
Life (5 Lacs): 105953 4.1 4295

**Glen Drummond Marquis Beth VG-CAN**

Life (8 Lacs): 112688 4.2 4766  
**Ferglynn Rag Apple Bertha VG-CAN 3\***

7-00 2x 365d 27796 4.7 1303  
Life (9 Lacs): 208857 4.0 8344



HERMITAGE COUNCILLER SHEBA EX-96 2E  
DAM OF LOT 55

55

## FOUR #1 EMBRYOS

- Worldwide Export Available; qualify for New Zealand but NOT AVAILABLE for U.S. shipment

### Holstein Plaza Contacts:

Steve Mower +1 240-520-5906

Jennifer Dingbaum +1 320-250-2412

### Rock Ella Impression-ET

JECAN000011227649 GT JH1F 28JE25 (4/13)

64%R -937M 0.09% -28F 4%ILE

64%R 0.04% -28P -64CM\$ -61NM\$ -64FM\$

1.1PL 2.0DPR 3.00SCS

GPTAT 57%R 1.0 GJPI 58%R -42

### Hermitage Counciller Sheba

10210999 Excellent-96 2E

6-08 2x 305d 23400 4.4 1042 3.7 873

8-02 2x 305d 23300 4.2 968 3.6 841

5-03 2x 305d 22050 4.9 1091 3.7 825

• Reserve Grand Champ, Central Nat'l 2008

• Reserve Premier Performance Cow,

All-American Jersey Show 2005

• Four sons in A.I.

### Impressive Indiana-ET

USA 112391117 138JE3163 (4/13)

USDA PTA 04/01/2013 106DAUS 55HRDS

90%R -1100M -0.06% -60F 1%ILE

90%R 0.00% -39P -314CM\$ -285NM\$

PTAT 86%R 1.1 JPI 83%R -116

### Huronion Connectn Crystalyn 23L

JECAN000010214696 SUP-EX 95-3E (CAN)

4-08 2x 305d 17777 5.0 897 3.8 670

### Glenholme Conciller

JECAN139361

99%R -739M 0.12% -13F 7%ILE

99%R 0.05% -17P 22CM\$ -1NM\$ -30FM\$

2.3PL 0.3DPR 2.92SCS

AJCA 04/01/2014 1913DAUS

### Hermitage Royal Sheona

JECAN595514 Very Good-86

### 3rd & 4th Dams

Hermitage Imperial Shelley VG-86

Lunnvale Silver Beam Shauna VG-86



# TERMS and CONDITIONS

## GENERAL:

- These terms are valid for all agreements made through this sale.
- The organization of the sale is done by Holstein Plaza, part of AMS Genetics International LLC.
- The party, which offers embryos in this sale will be named after this as the “seller” and the party who buys through this sale and gets the sale item assigned, will be hereinafter identified as the “buyer”.
- The organization will only act as an intermediary in the realization from a (purchase) agreement between seller and buyer.

## HOW DOES THE SALE WORK:

- All embryos sell with reasonable starting bid.
- The bid price is the per embryo price. If a lot has four embryos and the price is \$500.00 that means the lot price is \$2,000.00.
- When you place a bid, you agree to pay for the item if you're the winning bidder.
- All embryos are froze DT unless otherwise noted in catalog.
- All embryos are available for immediate shipment unless otherwise noted in catalog.
- There are two ways of placing a bid: internet ([www.holstein-plaza.com](http://www.holstein-plaza.com)) or via one of the listed Holstein Plaza contact persons.
- The bids are made in US dollars.
- When you place a bid, you enter the maximum amount you're willing to pay for the item. The other bidders and the sale organization will not be able to see your maximum bid. Through this Proxy bidding system, the Holstein Plaza auction system will increase your bid to the next lowest price when another user bids on the same item. The proxy bidding process continues until your maximum bid amount is reached or the auction ends. Every bidder is bound to his bid.
- The sale is using the popcorn bid system/5-minute rule ([click here for more information on the popcorn bid system/5-minute rule](#)). Until that moment bids will be accepted.
- All risks of the embryos are the responsibility of the buyer once the embryos are delivered to the buyer.
- The transportation of embryos from the seller to the buyer will take place as soon as possible after the sale, but not before complete payment as invoiced from AMS Genetics is received from the successful buyer.
- AMS Genetics will coordinate the paperwork and transfers with Holstein.

## PAYMENT:

- Payment for all purchases is due within ten days of sale.
- Sale invoices will be sent via e-mail or fax following the conclusion of the sale.
- Embryo release forms are issued once proper payment has been received and processed by AMS Genetics.
- Payment will not be released to the seller until AMS Genetics has received proper transfer paperwork.
- Holstein Plaza charges a buyer's commission of \$50 per embryo to include all necessary paperwork; note, this fee does not include shipping.
- International buyers are responsible for shipping the embryos. Buyers will be contacted after the sale about their wishes and requirements for exporting the embryos.
- All embryos needing international shipment will be charged a flat fee of \$150 per lot for export documentation.
- AMS Genetics can handle export and shipping. In case export is being done through AMS Genetics an additional \$50 export fee per embryo will be charged. This flat fee does not cover transport. Buyer should arrange shipping within 60 days of the ending sale date.

## EXCLUDING LIABILITY:

- The organization cannot be held responsible for errors on the internet site, sale catalog or in the advertisements.
- The organization cannot be held responsible for visual or non visual regardless the size or nature of such defect of the sold item.
- The organization does not take any responsibility for damage to persons or cases, which has arisen because of or connected to the sale.
- The cow indexes mentioned therein have been calculated or converted by the herdbook in the country the donor cow is housed in accordance with the current methods. All official pedigrees of sale animals can be seen.
- All frozen embryos are rated first class by official and registered ET veterinarians unless stated different on the website. In case embryos sold as first class after thawing turn out as class two or lower and not end in a pregnancy, the seller will be responsible for a refund, either in the form of an embryo with similar pedigree value or the purchase amount for the embryo. It is of vital importance that any claim is accompanied with an official statement in English from a recognized ET veterinarian. This should be sent to Holstein Plaza.
- Every bidder and seller is held to conform to the auction conditions. The act of bidding and consigning implicates knowledge and acceptance of these conditions.
- The organization can never be held responsible in case the embryos cannot be exported no matter what reason.