



VANGO DURHAM TREASURE EX-96 2E
DAM OF LOT 1



VANGO DURHAM TREASURE EX-96 2E
DAM OF LOT 1

1

Holstein Plaza Contacts:

Steve Mower +1 240-520-5906
Jennifer Dingbaum +1 320-250-2412

Maple-Downs-I G W Atwood-ET

8956379C Very Good-87 *TV *TL *TY *TD
PTA +294M +51F +15P 99%R 4/14
PTA +219NM\$ +1.0PL 2.97CS -2.5DPR
PTA +4.66T +3.51UDC +3.74FLC 99%R
GTPI +1942G

Vangoh Durham Treasure

135490787 Excellent-96 EX-99-MS 2E
4-10 2x 365d 35200 4.0 1399 3.4 1212
7-07 2x 365d 35300 3.8 1347 3.5 1225
Life: 2131d 179530 3.8 6855 3.5 5225
• Highest classified uddered cow in the U.S.
• Unanimous All-American 125,000 lb 2013
• 1st 125,000 lb Cow, Int'l Holstein Show 2013
• Reserve All-American Aged Cow 2011
• Nom All-Canadian Mature Cow 2011
• 2nd Production Class, RAWF 2011
• Nom All-American 125,000 Lb Cow 2010
• Res Grand Ch, Midwest Spring Nat'l 2010
• 1st 5-Yr-Old, Midwest Spring National 2009
• Best Udder Show, Midwest Spring Nat'l 2009
• 6th 4-Year-Old, International Show 2008
• Nom All-American Senior 3-Year-Old 2007

FIVE #1 IVF FEMALE EMBRYOS

• Eligible for shipment to the U.S. and export to EU and China

Braedale Goldwyn

CAN 10705608 GP-CAN EX'05 *TV *TL
PTA -9M +31F +13P 99%R 4/14
PTA +2.80T +2.45UDC +2.36FLC
GTPI +1879G

MD-Delight Durham Atlee-ET

131704103 Excellent-92 EEEEE DOM
3-11 2x 365d 38290 5.5 2091 3.1 1177
• All-American Senior 3-Year-Old 2005

Regancrest Elton Durham-ET

2250783 EX-90 GM 8/01 *TR *CV *TL
PTA -263M -33F +5P 99%R 4/14
PTA +2.45T +2.17UDC +2.07FLC
GTPI +1568G

Talk-About Linjet Try

131809022 Excellent-90 EX-MS 2E
4-07 2x 365d 27760 3.7 1030 3.3 912
3-05 2x 356d 25970 4.0 1046 3.3 857
8-03 2x 365d 21990 3.8 839
6-07 2x 305d 21410 3.9 828 3.0 650
Life: 2309d 136220 3.9 5311 3.3 3701

3rd thru 7th Dams

Debello-Hills A Trinity-ET VG-87 VG-MS
3-05 3x 306d 25610 3.5 907 3.3 839
Debello-Hills Star Trixster EX-90 EX-MS
5-11 3x 365d 37430 3.5 1305 2.9 1098
Life: 2521d 211470 3.7 7792 3.1 6463
Rol-Chris Astro Jet Trixie
EX-94 3E GMD DOM
7-06 3x 347d 34320 3.4 1156 3.0 1042
Life: 2724d 225180 3.4 7732 3.1 6889
Apple-Lawn Matt Thea VG-88
6-01 2x 305d 24880 3.2 802 2.9 730
Life: 2105d 130130 3.1 4099 3.0 3900
Apple-Lawn Beau Trenea VG-85
3-04 2x 347d 17610 4.3 752 3.5 617



**REGANCREST-GV O BRAZALIA-ET VG-87-2YR-CAN
2ND DAM OF LOT 2**



**REGANCREST BREYA-ET EX-90 GMD DOM
3RD DAM OF LOT 2**

2

FOUR #1 EMBRYOS

• Worldwide Export Available

Holstein Plaza Contacts:

Steve Mower +1 240-520-5906

Jennifer Dingbaum +1 320-250-2412

Stantons Main Event-ET

11596146C

PTA +1340M +72F +54P 74%R 4/14

PTA +902NM\$ +7.1PL 2.64SCS +2.8DPR

PTA +3.08T +2.87UDC +2.98FLC 73%R

GTPI +2567G

Lesperon Hunter Bayla

107645717 Born: December 27, 2012

GPA-LPI+3003 / Conf. +14

GTPI+2188 +1374M +73F +48P +3.26T

• No. 9 GPA-LPI Hunter daughter in Canada

Mountfield SSI Dcy Mogul

3006972816 *TV *TL *TY *TD

PTA +1377M +79F +49P 78%R 4/14

PTA +2.81T +2.99UDC +2.78FLC 77%R

GTPI+2394G

Stantons Super Elda

11084001C Good Plus-83-2YR

2-01 3x 365d 31343 4.1 1274 3.3 1038

Cookiecutter MOM Hunter-ET

3000540481 *TV *TL

PTA +1225M +71F +50P 99%R 4/14

PTA +2.77T +2.08UDC +1.97FLC 77%R

GTPI +2190G

Regancrest-GV O Brazalia-ET

66625662 Very Good-87-2YR-CAN 88-MS

GTPI+2028 +1373M +46F +40P +3.83T

2-02 2x 345d 32147 3.6 1171 3.3 1052

sired by: De-Su Observer

3rd thru 10th Dams

Regancrest Breya-ET EX-90 GMD DOM

2-02 2x 365d 31960 3.6 1164 3.0 966

• Former #1 Type Cow

• Dam of Bradnick

Regancrest-PR Barbie-ET

EX-92 GMD DOM

2-06 2x 365d 31690 3.9 1237 3.3 1050

• HM All-American Junior 3-Yr Old 2004

• Former #1 Type Cow

Regancrest Juror Brina-ET EX-92 GMD

4-04 2x 365d 40640 3.6 1478 2.8 1140

• Member Nom AA Best 3 Females 2000

• Res Grand Champ Iowa State Show 2000

Regancrest AeroStar Bert-ET

EX-90 GMD DOM

5-02 2x 365d 37790 3.6 1357 3.0 1143

Life: 1305d 109350 3.7 4031 3.1 3350

Regancrest Mark Chairman Bea

EX-91 2E GMD

7-09 2x 365d 33630 3.8 1276 2.9 988

Life: 2036d 140130 4.1 5711 3.1 4350

Regancrest Board Chairman Bea EX-90

5-09 2x 365d 26010 4.1 1059 3.2 835

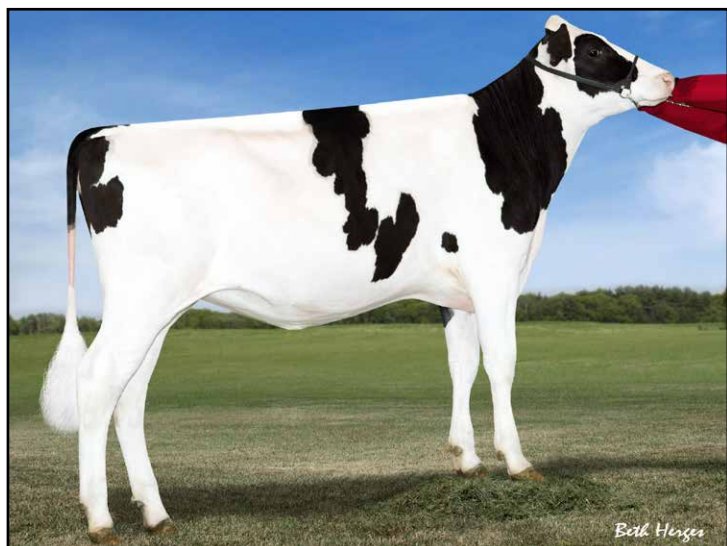
Regancrest Apache Standout Bea VG-86

4-10 2x 320d 19070 4.0 766

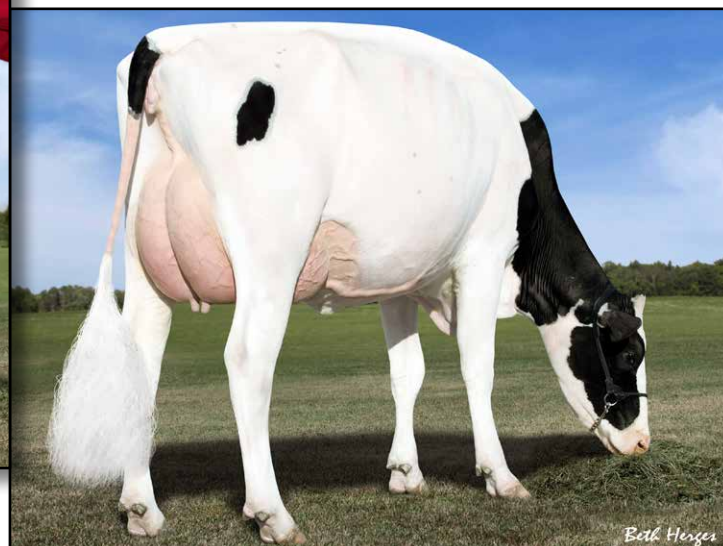
Life: 2432d 131940 3.6 4744

Regancrest Standout Bertrand VG-85

4-01 2x 355d 17460 3.3 571



DYMENTHOLM SUNVIEW SASSY-ET *RC
MATERNAL SISTER OF LOT 3



DES-Y-GEN PLANET SILK-ET *RC EX-90
DAM OF LOT 3

3

FIVE #1 EMBRYOS

• Worldwide Export Available

Holstein Plaza Contacts:

Steve Mower +1 240-520-5906

Jennifer Dingbaum +1 320-250-2412

Mr Ansly Addiction-P-Red-ET

72128091 *TV

PTA -457M +36F +21P 73%R 4/14

PTA +629NM\$ +5.3PL 2.55SCS +1.9DPR

PTA +3.36T +3.77UDC +1.86FLC 72%R

GTPI +2255G

Des-Y-Gen Planet Silk-ET *RC *TY

106109413C Excellent-90 EX-MS @ 4-03

GTPI+2076 +1215M +80F +38P +1.98T

2-02 2x 365d 29990 4.5 1351 3.2 960

• #15 GTPI *RC Cow, Locator List 4/14

• Nominated HI Global Red Impact Cow

• Dam to Dymenthholm Sunview Sassy-ET *RC

GTPI+2436 +845NM\$ +2.88T

• Dam to Josey-LLC Uno Sangaria-ET *RC

GTPI+2386 +769NM\$ +3.34T

• Dam of Sympatico, Seneca and Stoic

Tiger-Lily Ladd P-Red-ET

69405976 *B/R *TV *TL *TY

PTA -48M +30F +29P 76%R 4/14

PTA +3.20T +2.80UDC +2.23FLC

GTPI +2170G

Ms Apples Ainsley-ET *RC

69822262 Very Good-86 VG-MS @ 2-09

2-04 2x 180d 14680 4.5 667 3.2 470 inc.

Ensenada Taboo Planet

60597003 EX-90 *TV *TR *TL *TY *TD

PTA +2105M +63F +62P 99%R 4/14

PTA +1.73T +1.27UDC -0.56FLC 99%R

GTPI +2073G

Gen-I-Beq Bolton Silence *RC

104862615C Very Good-85-2YR-CAN

2-04 2x 365d 30002 4.6 1391 3.6 1069

4-09 2x 365d 29107 4.1 1184 3.5 1027

3rd thru 11th Dams

Gen-I-Beq Goldwyn Secret VG-87-CAN 7*

5-05 2x 365d 30573 4.5 1389 3.4 1038

Gen-I-Beq Durham Sherry VG-87-CAN 8*

5-02 2x 365d 40036 3.9 1574 3.2 1268

Glen Drummond Splendor

VG-86-2YR-CAN 37*

4-10 2x 314d 26510 4.2 1124 3.2 840

Glen Drummond Aero Flower

VG-88-CAN 18*

2-03 2x 326d 25622 4.0 1032 3.4 882

Glen Drummond Shower EX-CAN 13*

4-10 2x 365d 28583 4.8 1380 3.6 1016

Glen Drummond S C Jo Beth

EX-2E-CAN 7*

Life (6 Lacs): 141637 4.2 5994 3.2 3593

• Grand Champion Brant-Wentworth 1984

Glen Drummond Matt Beth VG-85 4*

11-10 2x 365d 25038 3.7 935

Life (5 Lacs): 105953 4.1 4295

Glen Drummond Marquis Beth VG-CAN

Life (8 Lacs): 112688 4.2 4766

Ferglynn Rag Apple Bertha VG-CAN 3*

7-00 2x 365d 27796 4.7 1303

Life (9 Lacs): 208857 4.0 8344



COYNE-FARMS FREDDIE JILL-ET VG-85 VG-MS @ 2-04
DAM OF LOT 4



COYNE-FARMS RAMOS JELLY VG-85-2YR DOM
2ND DAM OF LOT 4

4

FOUR #1 EMBRYOS

• Worldwide Export Available

Holstein Plaza Contacts:

Steve Mower +1 240-520-5906

Jennifer Dingbaum +1 320-250-2412

Richmond-FD El Bombero-ET

71637328 *TR *TV *TL *TY *TD

PTA +1988M +93F +58P 73%R 4/14

PTA +6.8PL 2.54SCS +0.9DPR

PTA +3.30T +2.68UDC +2.29FLC 73%R

GTPI +2558G

Coyne-Farms Freddie Jill-ET *TV

68677598 Very Good-85 VG-MS @ 2-04

GTPI+2169 +1044M +49F +37P +1.27T

2-00 3x 365d 33860 3.3 1125 3.1 1048

• Dam of Coyne-Farm Jabir +2419G

Maternal sisters to Jill

Coyne-Farms Mass Jill-ET

GTPI+2217 +744NM\$ +1.72T

• Dam of JACEY and NOMINEE

Amighetti Numero Uno-ET

ITA 17990915143 *TV *TL *TY

PTA +740M +80F +37P 78%R 4/14

PTA +2.93T +2.82UDC +1.96FLC 77%R

GTPI +2423G

Richmond-FD S Barbara-ET

69305043 Very Good-87-2YR

2-04 3x 233d 21759 3.9 849 2.8 608 inc.

Badger-Bluff Fanny Freddie

60996956 *TV *TL *TY *TD

PTA +1223M +51F +40P 99%R 4/14

PTA +1.51T +1.53UDC +2.54FLC

GTPI +2239G

Coyne-Farms Ramos Jelly *TY *CV

63855188 Very Good-85-2YR DOM

2-02 3x 365d 32120 4.1 1332 3.2 1025

3rd thru 9th Dams

Coyne-Farms Shottle Jam-ET

VG-88 VG-MS

3-00 3x 365d 35750 3.0 1080 3.1 1104

Coyne-Farms Bestow Jell

EX-90 EX-MS 2E

5-07 3x 365d 39980 3.8 1522 3.0 1219

Life: 1944d 170970 3.4 5733 3.3 5587

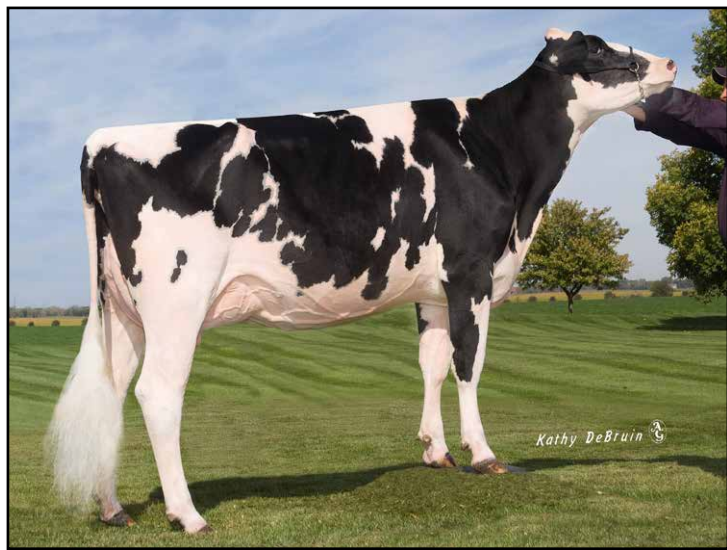
Coyne-Farms Wade Jelly VG-87

3-04 2x 365d 37710 4.0 1512 2.8 1056

Life: 2217d 183960 3.7 6738 3.0 5543

Coyne-Farms Skybuck Jello VG-86 VG-MS

4-08 3x 365d 27770 4.5 1258 3.3 916



COYNE-MCGARR BEWILDERED-ET GP-83 VG-MS
DAM OF LOT 5



R-E-W DAZ BEWITCHED-ET VG-86-2YR VG-MS DOM
2ND DAM OF LOT 5

5

FOUR #1 EMBRYOS

• Worldwide Export Available

Holstein Plaza Contacts:

Steve Mower +1 240-520-5906

Jennifer Dingbaum +1 320-250-2412

Morningview Mcc Kingboy-ET

72044077 *TV *TL *TY *TD

PTA +1927M +72F +63P 74%R 4/14

PTA +846NM\$ +6.1PL 2.74SCS +1.8DPR

PTA +3.92T +3.09UDC +2.85FLC 74%R

GTPI +2602G

Coyne-McGarr Bewildered-ET *TY

69757956 Good Plus-83 VG-MS @ 2-09

GTPI+2247 +1078M +47F +38P +4.01T

2-06 2x 192d 19656 2.9 573 3.3 644 inc.

De-Su Bkm McCutchen 1174-ET

69990138 *TV *TL *TY *TD

PTA +1277M +66F +51P 78%R 4/14

PTA +3.72T +3.36UDC +2.57FLC 78%R

GTPI +2384G

Morningview Super Megan

68654508 Very Good-85 VG-MS

2-01 3x 280d 22539 3.7 823 3.1 695 inc.

Coyne-Farms Dorcy-ET

139005002 *BY *TV *TL

PTA +1801M +51F +51P 99%R 4/14

PTA +2.99T +3.24UDC +2.96FLC 98%R

GTPI +2318G

R-E-W Daz Bewitched-ET

139825437 Very Good-86-2YR VG-MS

2-03 2x 365d 35920 4.0 1440 3.5 125

sired by: Picston Shottle

3rd thru 10th Dams

Regancrest G Bedazzle-ET EX-91 DOM

4-04 2x 365d 44260 3.7 1628 3.2 1416

Regancrest-PR Barbie-ET

EX-92 EEEEE GMD DOM

2-06 2x 365d 31690 3.9 1237 3.1 990

• HM All-American Junior 3-Yr Old 2004

• Former #1 Type Cow

Regancrest Juror Brina-ET EX-92 GMD

4-04 2x 365d 40640 3.6 1478 2.8 1140

• Member Nom AA Best 3 Females 2000

• Res Grand Champ Iowa State Show 2000

Regancrest Aerostar Bert-ET

EX-90 GMD DOM

5-02 2x 365d 37790 3.6 1357 3.0 1143

Life: 1305d 109350 3.7 4031 3.1 3350

Regancrest Mark Chairman Bea

EX-91 2E GMD

7-09 2x 365d 33630 3.8 1276 2.9 988

Life: 2036d 140130 4.1 5711 3.1 4350

Regancrest Board Chairman Bea EX-90

5-09 2x 365d 26010 4.1 1059 3.2 835

Regancrest Apache Standout Bea VG-86

4-10 2x 320d 19070 4.0 766

Life: 2432d 131940 3.6 4744

Regancrest Standout Bertrand VG-85

4-01 2x 355d 17460 3.3 571



GREENLEA ADVENT LETA-RED EX-93 EX-MS
DAM OF LOT 6



DUCKETT P LUCY-RED VG-88-2YR-CAN
MATERNAL SISTER TO LOT 6



Holstein Plaza Contacts:

Steve Mower +1 240-520-5906
Jennifer Dingbaum +1 320-250-2412

Mr Apples Action-Red-ET

68571373 *CV
PTA -771M +14F +11P 77%R 4/14
PTA +3.2PL 2.80SCS +1.0DPR
PTA +2.81T +2.89UDC +2.89FLC 77%R
GTPI +1934G

Greenlea Advent Leta-Red

138467540 Excellent-93-5YR EX-MS
3-08 2x 365d 32760 3.5 1154 3.2 1036
2-00 2x 365d 28770 4.0 1150 3.1 878
• HM All-American 125,000 lb. Cow 2013
• 3rd 125,000 lb. Cow, Grand Int'l R&W 2013
• Res All-American R&W 4-Year-Old 2011
• Res All-American Jr 2-Year-Old 2009
• 2nd Jr-2-Yr & Res Int Champion WDE 2009
• All-Canadian R&W Heifer Calf 2008
• HM All-American R&W Summer Yrlg 2008
• Already several All-American DAUGHTERS!

FIVE #1 EMBRYOS

• Worldwide Export Available

Scientific Destry *RC

138122625 *TV *TL *TY
PTA -369M -2F +12P 99%R 4/14
PTA +2.98T +2.93UDC +1.29FLC
GTPI +1910G

KHW Regiment Apple-Red-ET

135511521 Excellent-96 DOM
4-01 2x 365d 35750 4.7 1682 3.7 1314
• Grand Champion, Grand Int'l R&W Show

KHW Kite Advent-Red-ET

133002953 Excellent-95 *TV *TL *TD
PTA -973M -10F -20P 99%R 4/14
PTA +2.57T +2.27UDC +1.64FLC
GTPI +1591G

Erbacres Rubens Libby-Red

133068577 Excellent-94-5YR-CAN
2-03 2x 305d 22760 3.4 763 3.2 739
5-00 2x 365d 31991 3.5 1120 3.5 1111
• Res All-American R&W 5-Year-Old 2007
• Supreme Champion, MN State Fair 2007
• All-American R&W Jr 3-Year-Old 2005

Maternal sisters to Lot 6

Duckett P Lucy-Red VG-88-2YR-CAN

- Reserve All-American Jr 2-Year-Old 2013
- 2nd Jr 2-Yr-Old, Grand Int'l R&W 2013
- Res Int Champ, Western Fall Nat'l 2013
- Reserve All-American Spring Yrlg 2012
- All-American R&W Spring Yearling 2012
- Jr Champ, International R&W Show 2012
- All-American R&W Spring Calf 2011

Duckett D Layla-Red VG-87-2YR-CAN

- HM All-American Sr 2-Year-Old 2013
- 3rd Sr 2-Yr-Old, Grand Int'l R&W 2013
- Res Gr Ch, Western Fall Nat'l R&W 2013

Duckett P Lucky-Red

- Nom All-American Winter Yearling 2012
- All-American R&W Winter Calf 2011

Duckett P Lydia-Red

- Nom All-American R&W Winter Calf 2011
- Jr All-American R&W Winter Calf 2011

3rd thru 5th Dams

Erbacres R M Lucky Lady V VG-87 VG-MS

5-03 2x 359d 31490 3.4 1069 3.1 963
Life: 1777d 137240 3.5 4761 3.1 4217

Erbacres Encore Liberty N.C.

Erbacres Lavina EX-90 2E
6-01 2x 365d 38680 3.7 1418 2.9 1136
Life: 1786d 142380 3.6 5114 3.0 4231

Erbacres Tab Laughter EX-94 3E GMD

10-2 2x 365d 36440 4.1 1478 3.1 1126
Life: 2686d 223610 4.0 8964 3.2 7170

• 1st 125,000 Lb Cow, Midwest Sprg Nat'l '97



SAVAGE-LEIGH GOLDEN GIRL-ET
DAM OF LOT 7



SAVAGE-LEIGH LEONA-ET EX-96 EX-MS
2ND DAM OF LOT 7



FOUR #2 IVF FEMALE EMBRYOS

• Eligible for shipment to the U.S. and export to EU and China

Holstein Plaza Contacts:

Steve Mower +1 240-520-5906

Jennifer Dingbaum +1 320-250-2412

Gillette Windbrook

7816429C 91%RHA-NA *TV *TL *TY *TD
PTA +621M +41F +26P 97%R 4/14
PTA +260NM\$ +0.4PL 2.92SCS -1.9DPR
PTA +2.92T +2.14UDC +2.70FLC
GTPI +1850G

Savage-Leigh Golden Girl-ET

3007810483 Born: September 12, 2012
• Due August 2014 and looks tremendous!
• Big time Milking Yearling prospect for Expo!

Gillette Brilea F B I-ET

89524C EX-94-CAN EXTRA'05 *TV *TL
PTA +1473M +39F +35P 99%R 4/14
PTA +1.85T +1.24UDC +1.51FLC
GTPI +1763G

Gillette Blitz 2nd Wind-ET

7352248C VG-88-CAN 34*
2-02 3x 365d 39096 3.6 1422 3.0 1182

Braedale Goldwyn

CAN 10705608 GP-CAN EX'05 *TV *TL
PTA -9M +31F +13P 99%R 4/14
PTA +2.80T +2.45UDC +2.36FLC
GTPI +1879G

Savage-Leigh Leona-ET

61604187 Excellent-96 EEEEE
5-05 2x 365d 42050 4.3 1796 3.2 1343
• Nom All-American 125,000 lb Cow 2013
• Res All-American 125,000 lb Cow 2012
• Grand Champion, Eastern Fall Nat'l 2012
• Res Senior Champ, Eastern Fall Nat'l 2011
• Nom All-American & All-Canadian 2010
• 6th Jr 3-Yr Old, Int'l Holstein Show 2008
• HHM All-American Jr 2-Yr Old 2007

3rd thru 9th Dam

Savage-Leigh Licorice-ET

EX-92 GMD DOM
4-02 2x 365d 51220 4.3 2179 3.3 1693
Life: 1018d 113740 4.4 4968 3.4 3858
• Dam of Nom AA Produce of Dam 2007
• HHM All-American 5-Yr Old Cow 2006

Savage-Leigh Bellwood Linda

EX-92 2E GMD DOM
2-10 2x 365d 40240 5.8 2349 3.4 1358
Life: 1312d 126760 5.2 6576 3.2 4076
• Nom All-American Jr. 3-Year-Old 1999
• Nom Global Cow of the Year 2005

Savage-Leigh Star Linda-ET VG-87 GMD

2-02 2x 365d 30890 4.0 1236 3.1 952

Savage-Leigh Glenview Linda

EX-90 EVVE GMD DOM
6-08 2x 365d 41820 4.6 1936 3.0 1247
Life: 1892d 150300 4.4 6636 3.2 4813

Savage-Leigh Lindas Chairman GP-84

5-10 2x 365d 30620 3.8 1167 3.3 1013
Life: 1972d 121550 3.9 4718 3.3 4013

Savage-Leigh Creek Lydia VG-88

4-11 2x 344d 16390 4.2 685 3.1 511

Savage-Leigh Kate Linda VG-85

6-01 2x 305d 19940 4.0 793



**GARAY ALEXANDER DESTINY EX-92 EX-MS
DAM OF LOT 8**



**GARAY ALEXANDER DESTINY EX-92 EX-MS
DAM OF LOT 8**

8

FIVE #1 EMBRYOS

• Worldwide Export Available

Holstein Plaza Contacts:

Steve Mower +1 240-520-5906

Jennifer Dingbaum +1 320-250-2412

Pine-Tree Sid-ET

62175895 VG-86-CAN ST'10 *TY
PTA -87M +25F +5P 98%R 4/14
PTA +95NM\$ -1.1PL 2.80SCS -2.6DPR
PTA +2.79T +2.77UDC +0.91FLC 97%R
GTPI +1625G

Garay Alexander Destiny

106351725 Excellent-92 EX-MS (max score)

1-10 2x 362d 24521 3.8 926 2.9 704

- Sid daughter sold for \$13,000 this spring!
- Nominated All-American Sr 3-Year-Old 2013
- 6th Sr 3-Year-Old, World Dairy Expo 2013
- Intermediate Champ, Midwest Fall Nat'l 2013
- 1st Senior 3-Yr-Old, Midwest Fall Nat'l 2013
- All-American Milking Yearling 2011
- HM All-Canadian Milking Yearling 2011
- 1st Milking Yearling World Dairy Expo 2011
- 4th Milking Yearling Royal Winter Fair 2011

Regancrest-Mr Drham Sam-ET

207184639 GM *TR *TV *TL
PTA -92M +21F +3P 99%R 4/14
PTA +1.47T +1.31UDC +1.69FLC
GTPI +1493G

Pine-Tree Finley Minnie-ET

61733050 Excellent-90 VVEVE DOM 2*
4-09 2x 305d 26120 3.5 911 3.0 786

Golden-Oaks St Alexander

61133837 *TR *TV *TL *TY *TD
PTA +477M +71F +13P 99%R 4/14
PTA +2.05T +1.39UDC +1.81FLC
GTPI +1718G

Stanhope Dellia Goldwyn-ET

7807938 Very Good-88-4YR-CAN
3-08 2x 365d 35015 4.6 1624 3.2 1130
2-01 2x 365d 26662 4.2 1128 3.3 877

3rd thru 6th Dams

Wilcoxview Dbl Dellia-ET VG-87-CAN 4*

3-01 2x 365d 29658 3.1 924 3.5 1052

Life (4 Lacs): 104533 3.3 3402 3.6 3719

Regancrest Durene-ET EX-91 2*

6-01 3x 362d 30911 4.0 1241 3.8 1179

Snow-N Denises Dellia EX-95 GMD DOM

7-06 2x 365d 35610 4.0 1431 3.1 1103

Life: 2558d 180240 3.9 7108 3.4 6065

• Gr Ch & Best Udder Spring Nat/WI 1991

Snow-N Dorys Denise

EX-90 2E GMD DOM

5-09 2x 365d 33350 3.8 1256 2.9 975

Life: 1604d 114010 3.6 4153 3.0 3432



R-E-W DAZ BEDOTTIE VG-89
DAM OF LOT 9



REGANCREST G BEDAZZLE-ET EX-91 GMD DOM
2ND DAM OF LOT 9



FIVE #1 EMBRYOS

• Worldwide Export Available

Holstein Plaza Contacts:

Steve Mower +1 240-520-5906

Jennifer Dingbaum +1 320-250-2412

Maple-Downs-I G W Atwood-ET

8956379C Very Good-87 *TV *TL *TY *TD
PTA +294M +51F +15P 99%R 4/14
PTA +219NM\$ +1.0PL 2.97CS -2.5DPR
PTA +4.66T +3.51UDC +3.74FLC 99%R
GTPI +1942G

R-E-W Daz Betdottie-ET

139825400 Very Good-89 EVEEV
GTPI+1758 +3.28T +2.42UDC +2.21FLC
2-03 2x 365d 25520 3.5 894 3.3 852

Braedale Goldwyn

CAN 10705608 GP-CAN EX'05 *TV *TL
PTA -9M +31F +13P 99%R 4/14
PTA +2.80T +2.45UDC +2.36FLC
GTPI +1879G

MD-Delight Durham Atlee-ET

131704103 Excellent-92 EEEEE DOM
3-11 2x 365d 38290 5.5 2091 3.1 1177
• All-American Senior 3-Year-Old 2005

Picston Shottle-ET

GBR 598172 EX-95 GM 12/11 *TV *TL *TY
PTA +885M +45F +24P 99%R 4/14
PTA +2.29T +1.84UDC +1.58FLC
GTPI +1929G

Regancrest G Bedazzle-ET

62496924 Excellent-91 GMD DOM
4-04 2x 365d 44260 3.7 1628 3.4 1500
1-10 2x 365d 32630 4.5 1455 3.2 1035

3rd thru 9th Dams

Regancrest-PR Barbie-ET

EX-92 EEEEE GMD DOM
2-06 2x 365d 31690 3.9 1237 3.1 990
• HM All-American Junior 3-Yr Old 2004
• Former #1 Type Cow

Regancrest Juror Brina-ET EX-92 GMD

4-04 2x 365d 40640 3.6 1478 2.8 1140
• Member Nom AA Best 3 Females 2000
• Res Grand Champ Iowa State Show 2000

Regancrest Aerostar Bert-ET

EX-90 GMD DOM
5-02 2x 365d 37790 3.6 1357 3.0 1143
Life: 1305d 109350 3.7 4031 3.1 3350

Regancrest Mark Chairman Bea

EX-91 2E GMD
7-09 2x 365d 33630 3.8 1276 2.9 988
Life: 2036d 140130 4.1 5711 3.1 4350

Regancrest Board Chairman Bea EX-90

5-09 2x 365d 26010 4.1 1059 3.2 835
Regancrest Apache Standout Bea VG-86
4-10 2x 320d 19070 4.0 766

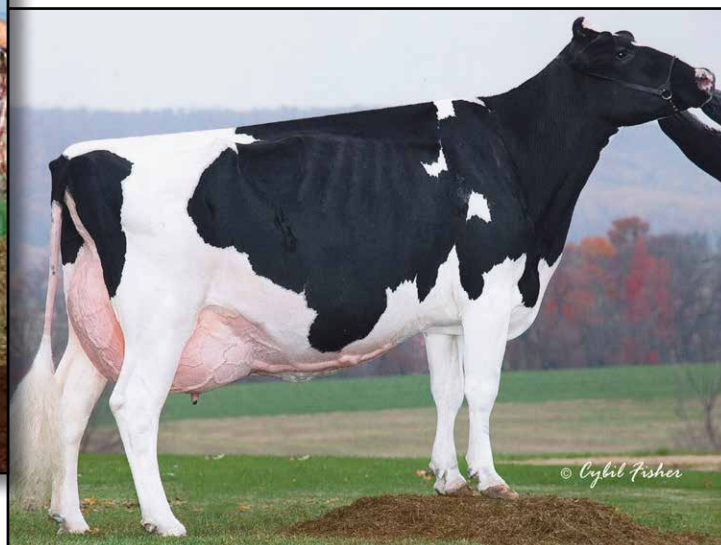
Life: 2432d 131940 3.6 4744

Regancrest Standout Bertrand VG-85

4-01 2x 355d 17460 3.3 571



**DURCHAN 109 GW DANETTE-ETS EX-91 EX-MS
DAM OF LOT 10**



**COLDSPRINGS DUR CHAN 109-ET EX-95 2E DOM
2ND DAM OF LOT 10**

10

FIVE #1 EMBRYOS

- Worldwide Export Available

Holstein Plaza Contacts:

Steve Mower +1 240-520-5906

Jennifer Dingbaum +1 320-250-2412

Val-Bisson Doorman

107281711C 99%RHA-I *TV *TL *TY *TD

PTA +946M +60F +50P 77%R 4/14

PTA +3.8PL 2.53SCS +0.0DPR

PTA +4.02T +3.20UDC +2.18FLC 76%R

GTPI +2370G

Durchan 109 GW Danette-ETS

66499665 Excellent-91 EX-MS @ 3-07

GTPI+1740 +3.74T +3.10UDC +2.60FLC

4-03 2x 181d 19410 3.0 575 2.9 560 inc.

2-11 2x 365d 33670 3.6 1199 3.3 1108

2-00 2x 287d 23830 3.4 819 3.3 777

De-Su 521 Bookem-ET

66636657 *TR *TV *TL *TY *TD

PTA +1585M +49F +61P 99%R 4/14

PTA +2.62T +2.14UDC +1.64FLC 97%R

GTPI +2279G

Val-Bisson Shottle Imelda

106173432 Very Good-85-2YR-CAN

1-11 2x 335d 23783 4.1 985 3.7 8826

Braedale Goldwyn

CAN 10705608 GP-CAN EX'05 *TV *TL

PTA -9M +31F +13P 99%R 4/14

PTA +2.80T +2.45UDC +2.36FLC

GTPI +1879G

Coldsprings Dur Chan 109-ET

60118563 Excellent-95 2E DOM

6-04 2x 365d 41850 4.3 1784 3.3 1371

4-00 2x 305d 30180 3.3 1004 3.1 949

Life: 1423d 130510 3.6 4695 3.3 5064

- Res All-American Aged Cow 2007
- HM All-American 5-Year-Old 2005
- All-American 4-Year-Old 2004

3rd thru 10th Dams

C Bermaska Starbuck Chancel

VG-89 DOM

2-07 2x 365d 28400 4.3 1230 3.5 999

- All-American Senior 2-Year-Old 1992

- All-American Senior Yearling Heifer 1991

Donaco Enhancer Cheryl VG-87-CAN

7-02 2x 305d 21462 4.8 1021 3.5 743

Danaco Apache Chanda VG-86

4-11 2x 322d 19160 4.3 829 3.5 670

Danaco Elevation Candace VG-86

Life: 2564d 185599 3.7 6834

Davis-Farm Maple Cindy EX-90 GMD

5-03 2x 365d 23849 3.7 871

Davis-Farm Heritage Candace EX-90 EEEV

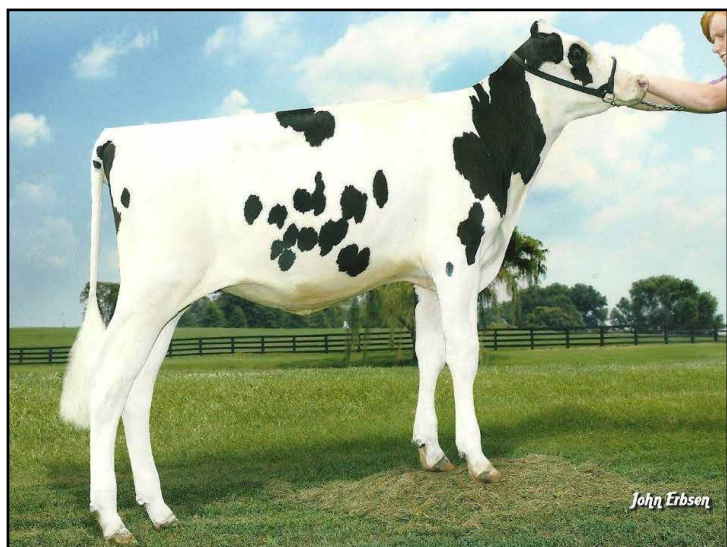
2-06 2x 305d 12060 3.7 445

Davis-Farm Model Lena VG-85

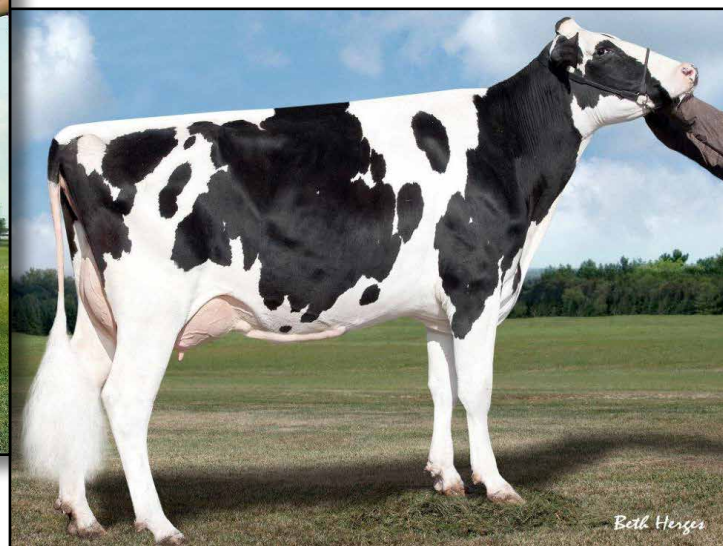
4-02 2x 305d 14060 4.1 582

Maview Candace Pilot EX-91 VEEV

Life: 3139d 151504 3.9 5825



**GBM OBSERVER 4905-ET VG-85 VG-MS @ 2-08
DAM OF LOT 11**



**GBM SHOTTLE AFRICA-ET EX-90 DOM
2ND DAM OF LOT 11**



FIVE #1 EMBRYOS

• *Worldwide Export Available*

Holstein Plaza Contacts:

Steve Mower +1 240-520-5906
Jennifer Dingbaum +1 320-250-2412

Morningview Mcc Kingboy-ET

72044077 *TV *TL *TY *TD
PTA +1927M +72F +63P 74%R 4/14
PTA +846NM\$ +6.1PL 2.74SCS +1.8DPR
PTA +3.92T +3.09UDC +2.85FLC 74%R
GTPI +2602G

GBM Observer 4905-ET

68984585 Very Good-85 VG-MS @ 2-08
GTPI+2092 +1241M +64F +39P +3.33T

De-Su Bkm McCutchen 1174-ET

69990138 *TV *TL *TY *TD
PTA +1277M +66F +51P 78%R 4/14
PTA +3.72T +3.36UDC +2.57FLC 78%R
GTPI +2384G

Morningview Super Megan

68654508 Very Good-85 VG-MS
2-01 3x 280d 22539 3.7 823 3.1 695 inc.

De-Su Observer-ET

65917481 VG-88 *TR *TV *TL *TY *TD
PTA +1476M +50F +45P 99%R 4/14
PTA +2.70T +3.02UDC +0.41FLC
GTPI +2168G

GBM Shottle Africa-ET

138276212 Excellent-90 EX-MS DOM
2-04 2x 365d 40420 4.5 1824 3.1 1236
• *7th generation Excellent!*

Maternal sisters to Lot 11

Ms Koenen Mogul 5744-ET
GTPI+2432 +3.31T +771NM\$
Ms Koenen NumeroUno 5835-ET
GTPI+2424 +3.48T +732NM\$

3rd thru 8th Dams

GBM Durham BC Annabell
EX-90 EX-MS DOM
2-03 2x 365d 40670 4.1 1673 3.0 1202
Life: 1449d 118720 4.4 5253 3.3 3961
• *8 Excellent and 23 Very Good daughters*
GBM Charles Janelle EX-93 EX-MS 2E DOM
6-03 2x 365d 31640 4.6 1471 3.3 1054
Life: 2347d 137890 4.8 6645 3.6 4953
GBM Val Blackstar Jean-ET EX-94 3E GMD
8-05 2x 365d 37180 3.9 1458 3.0 1119
Life: 3127d 238190 4.1 9734 3.4 8000
GBM Valiant Janice EX-92 2E DOM
5-09 2x 365d 30860 3.5 1080 3.1 948
Life: 2100d 126200 3.5 4437 3.2 3996
Sylvan-Dell M C Janice EX-91 2E DOM
6-03 2x 314d 29600 3.9 1152
Sylvan-Dell Atlas Jill EX-90 2E
4-06 2x 305d 20820 3.5 717



ENFUEGO GOLDSUN ALEXIS-ET
DAM OF LOT 12



CITYVIEW GIBSON ALCENA EX-91 EX-MS
2ND DAM OF LOT 12

12

Holstein Plaza Contacts:

Steve Mower +1 240-520-5906
Jennifer Dingbaum +1 320-250-2412



KHW Elm-Park Acme-ET *RC (SEXED)
61720218 Excellent-90 GM *TV *TL *TD
PTA -93M +25F +17P 99%R 4/14
PTA +2.8PL 3.13SCS -.3DPR
PTA +2.68T +2.91UDC +1.36FLC 97%R
GTPI +1845G

Enfuego Goldsun Alexis-ET
72288821 Born: December 19, 2012

THREE #1 EMBRYOS

• Worldwide Export Available

Ladino Park Talent-Imp-ET *RC
AUS 930377 EX-90 ST'03 *TV *TL
PTA -259M -32F +2P 99%R 4/14
PTA +2.09T +2.25UDC +1.07FLC
GTPI +1417G

Kamps-Hollow Altitude-ET *RC
129136431 EX-95 EEEEE 2E DOM
7-00 2x 365d 39690 4.7 1849 3.5 1385

Toc-Farm Goldsun-ET
ITA 53990032335 100%RHA-NA
PTA -694M -19F -11P 89%R 4/14
PTA +3.63T +3.99UDC +2.19FLC
GTPI +1697G

Cityview Gibson Alcena-ET
9419064C Excellent-91 EVVEE
2-00 2x 365d 26360 3.9 1016 3.1 1016
3-10 2x 305d 22510 3.9 878 3.3 735

Full sister to S Alicia

Ms Kingstead Chief Adeen-ET
EX-94 2E DOM

3-05 2x 310d 30180 4.0 1209 3.4 1020
Life: 1382d 100760 4.0 4010 3.4 3458

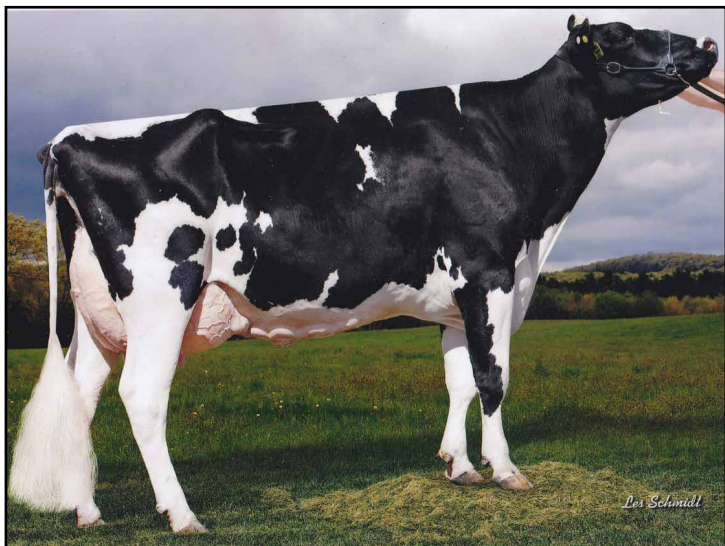
- 2x Member All-American Produce
- Nom All-American Jr 3-Yr Old
- Nom All-American 4-Yr Old
- Dam of 16 VG and 11 EX Offspring

3rd thru 5th Dams

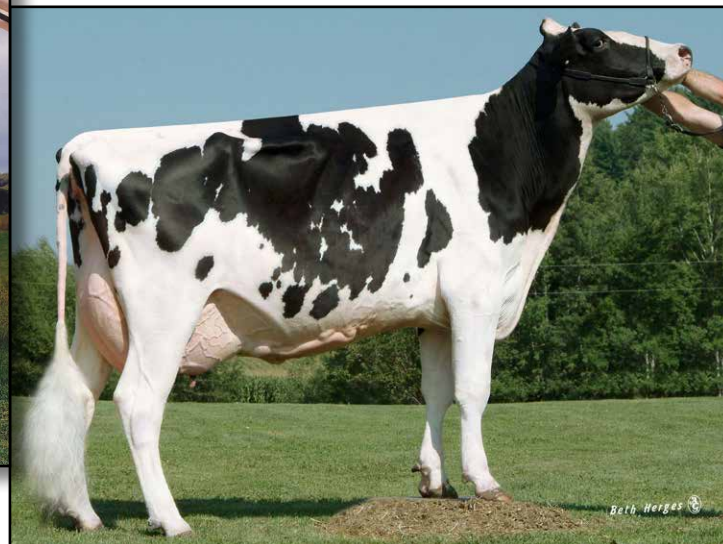
Cityview R Alicia-ET EX-92-CAN
6-08 3x 365d 42504 3.5 1507 3.1 1324
Shoremar S Alicia-ET EX-97 EEEEE 3E
8-10 2x 365d 38250 4.3 1650 3.3 1270
Life: 2102d 185002 4.2 7731 3.4 6288

- Nom for Queen of the Breed II 2003
- Res All-American 125,000 lb Cow 2004
- HHM All-Time AA 5-Yr Old 2003
- All-American Aged Cow 2003
- All-American 5-Yr Old 2000
- All-World & People Choice Winner 2000
- Grand & Supreme Champ RAWF 2000
- AA & All-Canadian 5-Yr Old 2000
- All-Canadian 4-Yr Old 1999
- All-Canadian Jr 2-Yr Old 1997

C Aitkenbrae Starbuck Ada EX-94 2E DOM
13-8 2x 365d 25150 3.0 764 3.2 796
• All-American Produce of Dam 2000
• 1st Eastern Nat'l 3-Yr Old & Grand Ch 1990



CASTLEHOLM PRONTO RYEA EX-90
DAM OF LOT 13



ASTRAHOE R LORENZO RACHEL EX-90
2ND DAM OF LOT 13

13

Holstein Plaza Contacts:

Steve Mower +1 240-520-5906
Jennifer Dingbaum +1 320-250-2412

Gillette Windbrook

7816429C 91%RHA-NA *TV *TL *TY *TD
PTA +621M +41F +26P 97%R 4/14
PTA +260NM\$ +0.4PL 2.92SCS -1.9DPR
PTA +2.92T +2.14UDC +2.70FLC
GTPI +1850G

Castleholm Pronto Ryea

66022257 Excellent-90 91-MS @ 5-00
2-08 2x 365d 30390 4.1 1258 3.5 1071
3-09 2x 305d 22340 4.4 976 3.8 844
• 15th generation EXCELLENT!

FIVE #1 IVF FEMALE EMBRYOS

• Eligible for shipment in the U.S. and export to the EU and China

Gillette Brilea F B I-ET

89524C EX-94-CAN EXTRA'05 *TV *TL
PTA +1473M +39F +35P 99%R 4/14
PTA +1.85T +1.24UDC +1.51FLC
GTPI +1763G

Gillette Blitz 2nd Wind-ET

7352248C VG-88-CAN 34*
2-02 3x 365d 39096 3.6 1422 3.0 1182

Windy-Know-View Pronto

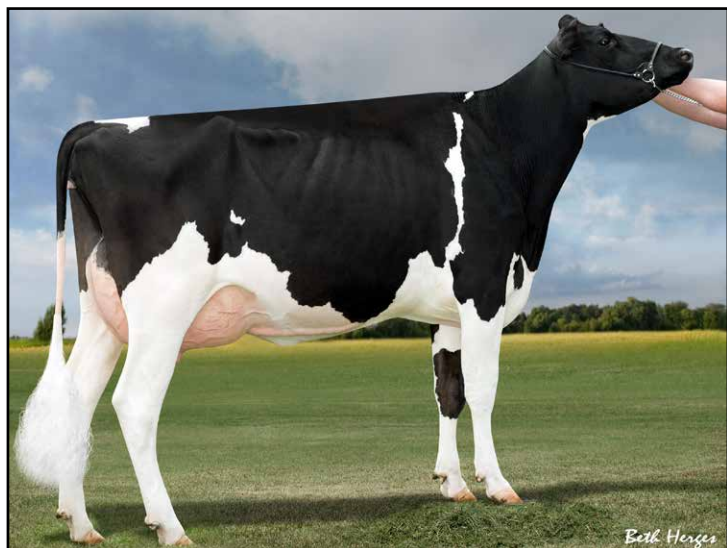
132815961 EX-95 *TR *TV *TL *TY *TD
PTA +731M +18F +13P 99%R 4/14
PTA +1.82T +1.11UDC +1.87FLC 4/14
GTPI +1776G

Astrahoe R Lorenzo Rachel

134779991 Excellent-90 EX-MS @ 3-10
3-09 2x 365d 42470 3.9 1670 3.3 1409
2-02 3x 305d 25600 4.1 1039 2.9 750

3rd thru 15th Dams

Astrahoe P Rosa Robyn EX-90 EX-MS
3-02 3x 365d 27860 3.4 935 2.9 815
Pinehurst Royal Rosa-ET EX-91 2E
3-10 3x 365d 41395 3.3 1358 2.8 1145
Life: 1212d 115400 3.5 4073 3.1 3593
Pinehurst Roulade EX-92 EEEEE 2E
5-00 3x 365d 35130 3.6 1271 3.2 1115
Life: 1761d 142070 3.8 5395 3.3 4705
Pinehurst Sweet Cleo EX-90 EEEVEV
6-00 3x 365d 40380 4.4 1776 3.2 1305
Pinehurst Sweet Freedom EX-90 VEVE
5-07 3x 330d 34520 4.3 1500 3.1 1084
Pinehurst Sweet Delite EX-91 3E GMD
8-10 3x 365d 28460 4.2 1194 3.2 917
Life: 2228d 151600 4.0 6116 3.2 4907
Pinehurst Rapture EX-96 4E GMD
8-02 3x 365d 30370 4.2 1290 3.1 948
Life: 2297d 160790 3.9 6337 3.0 2469
Pinehurst Fragrance EX-90 2E
4-8 3x 365d 34490 3.6 1234
Hayssen Fond Ariel EX-90 2E
8-06 2x 328d 23330 3.2 753
Hayssen D V Audrey EX-90 2E
9-03 2x 365d 23670 4.4 1035
Whirlhill Q Rag Apple Ariel EX-92
6-02 2x 365d 26755 4.2 1134
Arlite Posch EX-92 GMD
5-03 2x 365d 21193 3.7 779
Audrey Posch EX-93 GMD
14-2 2x 365d 25572 3.7 948



GAF-FINE OBSERV CARLESHA-ET VG-86 VG-MS
DAM OF LOT 14



LARCREST CHESSA-ET VG-87 VG-MS
2ND DAM OF LOT 14

14

SIX #1 EMBRYOS

• Worldwide Export Available

Holstein Plaza Contacts:

Steve Mower +1 240-520-5906

Jennifer Dingbaum +1 320-250-2412

Generations Epic-ET

11104016 *TV *TL *TY *TD

PTA +1672M +46F +49P 76%R 4/14

PTA +5.8PL 2.75SCS +1.9DPR

PTA +2.42T +1.88UDC +2.21FLC 76%R

GTPI +2273G

Gaf-Fine Observ Carlesha-ET

65943592 Very Good-86 VG-MS @ 2-08

GTPI+2234 +1032M +67F +45P +2.72T

2-04 2x 223d 18256 4.0 717 3.6 655 inc.

Charlesdale Superstition-ET

62065919 *TR *TV *TL *TY *TD GM

PTA +1484M +5F +43P 99%R 12/13

PTA +2.01T +1.95UDC +1.07FLC

GTPI +2133G

Tramilda-N Baxter Emily-ET

139232811 Very Good-85-2YR-CAN

2-05 2x 282d 30946 4.2 1287 3.4 1060

De-Su Observer-ET

65917481 VG-88 *TR *TV *TL *TY *TD

PTA +1476M +50F +45P 99%R 4/14

PTA +2.70T +3.02UDC +0.41FLC

GTPI +2168G

Larcrest Chessa-ET

139972483 Very Good-87 VG-MS @ 3-01

GTPI+2075 +171M +59F +32P +2.62T

2-08 2x 365d 25146 4.5 1131 3.7 930

• Sired by Lylehaven Lightning

3rd thru 7th Dams

Larcrest Crimson-ET EX-92 GMD DOM

2-02 2x 365d 36060 4.7 1710 3.6 1283

Larcrest Cosmopolitan VG-87 DOM

2-04 2x 365d 30930 4.1 1261 3.6 1119

Larcrest Oside Champagne-TW

EX-90 GMD DOM

2-03 2x 365d 29110 4.5 1322 3.7 1077

• 17 sons in A.I. worldwide

Larcrest Juror Chanel EX-93 3E GMD DOM

9-00 2x 365d 48460 4.0 1943 3.4 1648

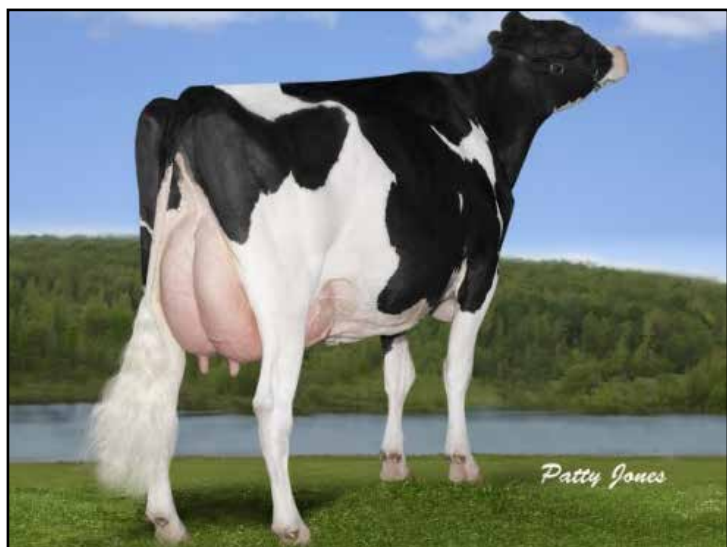
Life: 2899d 245420 4.3 10482 3.6 8866

Larcrest Lindy Chandra VG-85

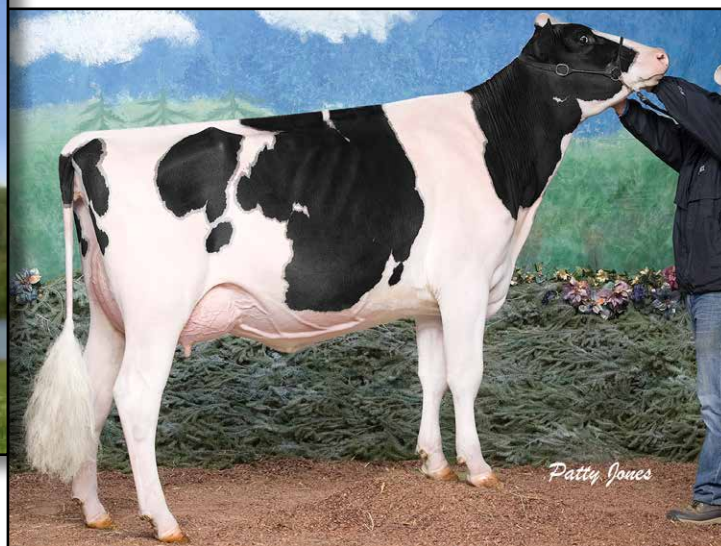
2-05 2x 365d 20896 4.8 993 3.8 803

Larcrest Inspiration Carly VG-87

3-05 2x 305d 21800 4.5 973 3.3 802



**GILLETTE GOLDWYN SIZZLE EX-91-CAN
DAM OF LOT 15**



**GILLETTE DUNDEE SUNSHINE VG-89-CAN
2ND DAM OF LOT 15**

15

FOUR #1 EMBRYOS

• Worldwide Export Available

Holstein Plaza Contacts:

Steve Mower +1 240-520-5906

Jennifer Dingbaum +1 320-250-2412

Morningview Mcc Kingboy-ET

72044077 *TV *TL *TY *TD

PTA +1927M +72F +63P 74%R 4/14

PTA +846NM\$ +6.1PL 2.74SCS +1.8DPR

PTA +3.92T +3.09UDC +2.85FLC 74%R

GTPI +2602G

Gillette Goldwyn Sizzle

9862845 Excellent-91-CAN 92-MS

LPI+2616 / Conf. +15

3-02 3x 365d 28922 3.6 1049 3.2 928

2-03 3x 308d 28146 4.1 1162 3.2 888

De-Su Bkm McCutchen 1174-ET

69990138 *TV *TL *TY *TD

PTA +1277M +66F +51P 78%R 4/14

PTA +3.72T +3.36UDC +2.57FLC 78%R

GTPI +2384G

Morningview Super Megan

68654508 Very Good-85 VG-MS

2-01 3x 280d 22539 3.7 823 3.1 695 inc.

Braedale Goldwyn

CAN 10705608 GP-CAN EX'05 *TV *TL

PTA -9M +31F +13P 99%R 4/14

PTA +2.80T +2.45UDC +2.36FLC

GTPI +1879G

Gillette Dundee Sunshine

7587984 Very Good-89-3YR-CAN

2-00 3x 365d 30853 3.8 1171 3.2 999

• Res All-Canadian Milking Yearling 2007

• Res All-Canadian Senior Calf 2006

• All-Ontario Milking Yearling 2007

3rd thru 10th Dams

Sunnylodge Rudolph Scariet EX-92-3E 10*

3-09 3x 365d 51405 4.2 2161 3.1 1607

Life (5 Lacs): 282356 4.0 11426 3.2 8900

Sunnylodge Jed Sheryl VG-89-CAN 10*

4-06 2x 365d 29877 4.4 1325 3.4 1012

Sunnylodge Prelude Spottie VG-87 18*

3-04 2x 365d 30091 4.1 1224 3.5 1058

Sunnylodge He Man Judy VG-86-CAN

4-07 2x 360d 22509 4.2 950 3.3 741

Sunnylodge Lolie VG-85-CAN

8-06 2x 358d 29899 3.4 1005 3.0 895

Life (7 Lacs): 187027 3.4 6435 3.0 3362

Sunnylodge Edith EX-CAN

6-09 2x 365d 24123 3.8 924

Life (7 Lacs): 141081 3.8 5329

Sunnylodge Carol Maple VG-86-CAN

4-06 2x 331d 23558 3.8 886

Life (5 Lacs): 108442 3.9 4266

Merkdale Tena President VG-CAN

6-10 2x 335d 20095 4.2 847



LINDENRIGHT SHOTTLE BRISTOL EX-91-CAN
DAM OF LOT 16



LINDENRIGHT DUNDEE ALASKA EX-92 2E
2ND DAM OF LOT 16

16

FIVE #1 EMBRYOS

• Worldwide Export Available

Holstein Plaza Contacts:

Steve Mower +1 240-520-5906

Jennifer Dingbaum +1 320-250-2412

Maple-Downs-I G W Atwood-ET

8956379C Very Good-87 *TV *TL *TY *TD
PTA +294M +51F +15P 99%R 4/14
PTA +219NM\$ +1.0PL 2.97CS -2.5DPR
PTA +4.66T +3.51UDC +3.74FLC 99%R
GTPI +1942G

Lindenright Shottle Bristol

10853439C Excellent-91-CAN 91-MS
2-10 2x 305d 23792 3.8 915 3.1 743
1-11 2x 276d 17000 3.9 655 3.3 562
• 3rd Sr. 2-Yr East, NS Ex. 2012

Same family as

Lindenright Dundee L Laural EX-93-CAN

Lindenright Goldwyn Royce VG-89-2YR

• All-Canadian Milking Yearling 2009

Braedale Goldwyn

CAN 10705608 GP-CAN EX'05 *TV *TL
PTA -9M +31F +13P 99%R 4/14
PTA +2.80T +2.45UDC +2.36FLC
GTPI +1879G

MD-Delight Durham Atlee-ET

131704103 Excellent-92 EEEEE DOM
3-11 2x 365d 38290 5.5 2091 3.1 1177
• All-American Senior 3-Year-Old 2005

Picston Shottle-ET

GBR 598172 EX-95 GM 12/11 *TV *TL *TY
PTA +885M +45F +24P 99%R 4/14
PTA +2.29T +1.84UDC +1.58FLC
GTPI +1929G

Lindenright Dundee Alaska

7543918C Excellent-92 2E 1*
6-06 2x 345d 30587 3.7 1135 3.2 988
3-04 2x 365d 29046 4.0 1171 3.3 972
• 3rd Mature Cow, NS Prov. Ex. 2011

3rd thru 8th Dams

Lindenright Leader CL Lucille EX-90 4E 7*

10-10 2x 365d 40510 3.8 1554 3.3 1318

Life: (7 Lacs) 249395 3.6 8926 3.3 8208

• 2 Superior Lactations

• 4 EX & 6 VG daughters

Lindenright Conquest Lidy VG-86 11*

7-09 2x 365d 34337 3.6 1239 3.2 1100

Life: (7 Lacs) 225191 3.5 7791 3.3 7480

Dream&Do Eagle Liberty VG-85-CAN 13*

6-07 2x 35d 36700 3.6 1305 3.4 1239

Life: (5 Lacs) 139121 3.5 4912 3.5 4802

Dream&Do Beccas Image-ET

EX-94 3E DOM

6-03 2x 365d 29270 3.4 990 3.2 928

Life: (8 Lacs) 201192 3.7 7363 3.3 6556

Ray-Collins Bmaker Girl Willow

EX-94 5E DOM

10-07 2x 365d 29941 3.9 1179 3.3 983

Life: (11 Lacs) 27274 3.9 10703 3.2 8735

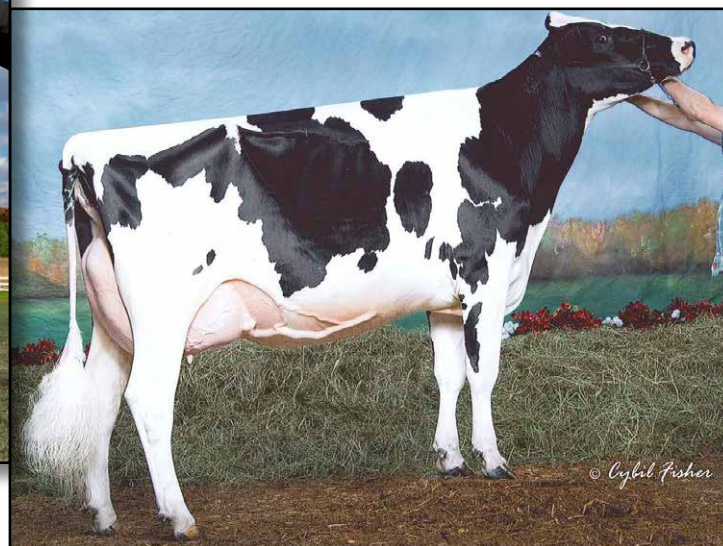
Ray-Collins Bootmaker Girl

VG-87 GMD DOM

8-02 2x 365d 25569 3.5 897



PINELAND GOLDWYN HEMI-ET EX-94 EX-MS
DAM OF LOT 17



KISSAME DUNDEE HALEY-ET EX-93 2E
2ND DAM OF LOT 17



FIVE #1 EMBRYOS

• Worldwide Export Available

Holstein Plaza Contacts:

Steve Mower +1 240-520-5906

Jennifer Dingbaum +1 320-250-2412

Gen-I-Beq Topside

104292964 *TY

PTA +1059M +65F +37P 92%R 4/14

PTA +372NM\$ +0.9PL 2.79SCS -2.0DPR

PTA +2.65T +2.47UDC +1.57FLC 86%R

GTPI +1932G

Pineland Goldwyn Hemi-ET

65465997 Excellent-94 EEEEE @ 5-10

3-06 2x 365d 27880 4.4 1224 3.5 963

2-05 2x 314d 20620 4.5 918 3.6 746

• 1st Sr 2-Yr-Old, Maine State Show 2010

Sandy-Valley Bolton-ET

131823833 Excellent-90 GM 8/10 *TV *TL

PTA +1863M +68F +49P 99%R 4/14

PTA +2.43T +2.38UDC +1.90FLC

GTPI +1943G

Braedale Baler Twine

6860888C Very Good-86-CAN 29*

2-01 2x 365d 30906 4.9 1521 3.4 1052

Braedale Goldwyn

CAN 10705608 GP-CAN EX'05 *TV *TL

PTA -9M +31F +13P 99%R 4/14

PTA +2.80T +2.45UDC +2.36FLC

GTPI +1879G

Kissame Dundee Haley-ET

137187003 Excellent-94 EEEEE 2E

7-00 2x 365d 24840 4.2 1036 3.2 802

3-08 2x 356d 24320 4.1 1005 3.3 809

4-10 2x 365d 22880 4.0 907 3.3 749

2-07 2x 347d 20260 4.0 801 3.4 691

• HM All-American Fall Calf 2006

• 2nd Sr 2-Yr-Old, North-E Fall Nat'l 2008

• 1st Sr 3-Yr-Old, North-E Fall Nat'l 2009

• 3rd 4-Year-Old, North-E Fall Nat'l 2010

4th thru 7th Dams

Robdar Stardust Heather EX-93 EEEEE 4E

7-11 3x 365d 39120 4.4 1716 3.3 1301

Life: 2550d 189070 4.6 8683 3.4 6421

Manorcrest Cleitus Holly-TW

VG-88 EX-MS

5-04 2x 365d 25410 3.9 991 3.2 812

Manorcrest Peachum Alda EX-92 EEEE 5E

9-07 2x 347d 22620 4.1 924 3.1 703

Life: 3412d 207800 4.0 8359 3.1 5246

Crackys Willow Ida-Twin EX-91 EEEE 3E

6-11 2x 355d 26500 3.5 923

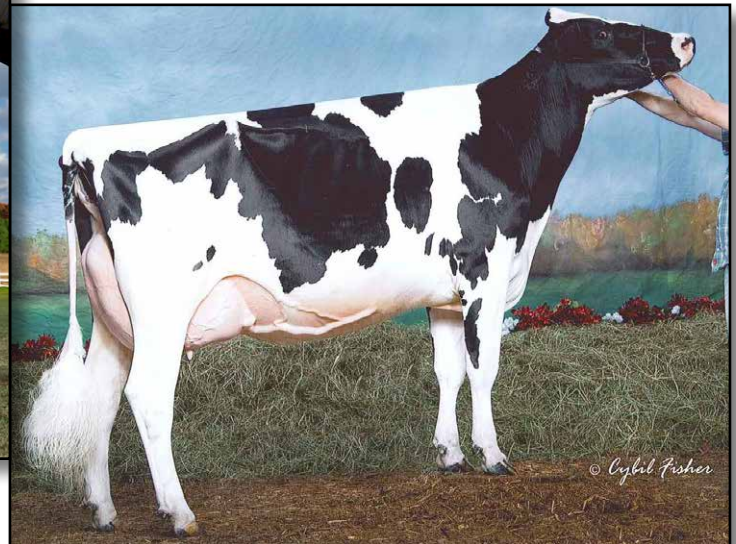
Life: 2171d 129990 3.8 4908

Crackys Flector Ida VG-85

7-07 2x 305d 13980 4.5 634



PINELAND GOLDWYN HEMI-ET EX-94 EX-MS
DAM OF LOT 18



KISSAME DUNDEE HALEY-ET EX-93 2E
2ND DAM OF LOT 18

18

FIVE #1 EMBRYOS

• Worldwide Export Available

Holstein Plaza Contacts:

Steve Mower +1 240-520-5906

Jennifer Dingbaum +1 320-250-2412

Allyndale-I Attic

8956386 *TV *TL *TY

PTA -368M +39F +4P 97%R 4/14

PTA +186NM\$ +0.4PL 2.76SCS -1.4DPR

PTA +3.02T +2.76UDC +2.30FLC 95%R

GTPI +1766G

Pineland Goldwyn Hemi-ET

65465997 Excellent-94 EEEEE @ 5-10

3-06 2x 365d 27880 4.4 1224 3.5 963

2-05 2x 314d 20620 4.5 918 3.6 746

• 1st Sr 2-Yr-Old, Maine State Show 2010

Braedale Goldwyn

CAN 10705608 GP-CAN EX'05 *TV *TL

PTA -9M +31F +13P 99%R 4/14

PTA +2.80T +2.45UDC +2.36FLC

GTPI +1879G

MD-Delight Durham Atlee-ET

131704103 Excellent-92 EEEEE DOM

3-11 2x 365d 38290 5.5 2091 3.1 1177

• All-American Senior 3-Year-Old 2005

Braedale Goldwyn

CAN 10705608 GP-CAN EX'05 *TV *TL

PTA -9M +31F +13P 99%R 4/14

PTA +2.80T +2.45UDC +2.36FLC

GTPI +1879G

Kissame Dundee Haley-ET

137187003 Excellent-94 EEEEE 2E

7-00 2x 365d 24840 4.2 1036 3.2 802

3-08 2x 356d 24320 4.1 1005 3.3 809

4-10 2x 365d 22880 4.0 907 3.3 749

2-07 2x 347d 20260 4.0 801 3.4 691

• HM All-American Fall Calf 2006

• 2nd Sr 2-Yr-Old, North-E Fall Nat'l 2008

• 1st Sr 3-Yr-Old, North-E Fall Nat'l 2009

• 3rd 4-Year-Old, North-E Fall Nat'l 2010

4th thru 7th Dams

Robdar Stardust Heather EX-93 EEEEE 4E

7-11 3x 365d 39120 4.4 1716 3.3 1301

Life: 2550d 189070 4.6 8683 3.4 6421

Manorcrest Cleitus Holly-TW

VG-88 EX-MS

5-04 2x 365d 25410 3.9 991 3.2 812

Manorcrest Peachum Alda EX-92 EEEE 5E

9-07 2x 347d 22620 4.1 924 3.1 703

Life: 3412d 207800 4.0 8359 3.1 5246

Crackys Willow Ida-Twin EX-91 EEEE 3E

6-11 2x 355d 26500 3.5 923

Life: 2171d 129990 3.8 4908

Crackys Flector Ida VG-85

7-07 2x 305d 13980 4.5 634



SPEEK-NJ UNO DECKLYN-ET
MATERNAL SISTER TO DAM OF LOT 19



REGAN-ALH PLANET DELORIA VG-86-2YR DOM
2ND DAM OF LOT 19

19

THREE #1 EMBRYOS

• *Worldwide Export Available*

Holstein Plaza Contacts:

Steve Mower +1 240-520-5906

Jennifer Dingbaum +1 320-250-2412

Larcrest Commander-ET

58591942 *TV *TL *TY *TD

PTA +1704M +85F +69P 73%R 4/14

PTA +4.7PL 2.73SCS +0.1DPR

PTA +3.25T +2.96UDC +2.51FLC 72%R

GTPI +2473G / GPA-LPI+3339 / RZG+155

Speek-NJ Fernand Depp *TL *TD

71619106 Born: January 8, 2013

GTPI+2302 +2011M +97F +80P +1.88T

Mountfield SSI Dcy Mogul

3006972816 *TV *TL *TY *TD

PTA +1377M +79F +49P 78%R 4/14

PTA +2.81T +2.99UDC +2.78FLC 77%R

GTPI+2394G

Larcrest Calinda-ET

70119330

Cabon Fernand

FRA 2941261203 *TV *TL *TY

PTA +1301M +94F +57P 76%R 4/14

PTA +2.12T +1.90UDC +1.82FLC 75%R

GTPI +2230G

Regan-Alh Planet Deloria-ET

66624771 VG-86 VG-MS @ 2-08 DOM

GTPI+2100 +1936M +58f +70P +1.69T

2-04 3x 305d 29400 4.4 1300 3.4 994

3rd thru 8th Dams

A-L-H Destiny-ET

61361722 VG-87-3YR GMD DOM

2-04 2x 365d 33199 3.8 1259 3.6 1202

• *Over 20 sons in A.I.*

Markwell Durham Daisy-ET

EX-92 EEEEE GMD DOM

6-07 2x 365d 40490 4.0 1628 3.3 1338

Life: 1200d 109000 3.8 4181 3.4 3740

• *3rd Sr 2-Yr Old, Int'l Holstein Show 2002*

Markwell Luke Rapture-ET

EX-92 EEEEE 4E GMD DOM

5-06 2x 365d 39400 4.2 1649 3.3 1304

Life: 1859d 137840 3.9 5347 3.6 4964

Markwell Bstar E Raven-ET

EX-95 EEEEE 3E GMD DOM

4-09 2x 365d 36610 4.3 1580 3.4 1255

Life: 2387d 160020 4.1 6623 3.6 7533

• *1st W Fall Nat'l Aged Dry Cow 1997*

• *Finalist for Queen of the Breed*

Markwell Mark Elite EX-92 4E GMD DOM

7-00 2x 365d 36230 3.9 1426 3.2 1164

Life (4 Lacs): 211430 3.8 8109 3.6 7531

Rockalli Mars Emily EX-94 4E GMD DOM

6-03 2x 365d 26971 4.0 1080 3.4 904

Life (7 Lacs): 182966 3.8 7019 3.5 6329



MILKSOURCE SHOCK AFFAIR VG-87 VG-MS
DAM OF LOT 20



AMLAIIRD LEE ALICE EX-94 2E
2ND DAM OF LOT 20

20

FOUR #1 EMBRYOS

- Worldwide Export Available

Holstein Plaza Contacts:

Steve Mower +1 240-520-5906

Jennifer Dingbaum +1 320-250-2412

Regancrest Elton Durham-ET

2250783 EX-90 GM 8/01 *TR *CV *TL
PTA -263M -33F +5P 99%R 4/14
PTA +15NM\$ -0.1PL 2.91SCS +.2DPR
PTA +2.45T +2.17UDC +2.07FLC
GTPI +1568G

Milksource Shock Affair-ET

69954137 Very Good-87-2YR VG-MS

- Res Junior Champion, GA National Fair 2012
- From 3 Generations of EX-94 2E cows

Emprise Bell Elton

1912270 EX-95 *CV *BL *TD
PTA -133M -2F +5P 99%R 4/14
PTA -.90T -1.12UDC +1.07FLC
GTPI +1136G

Snow-N Denises Dellia

12895802 Excellent-95 2E GMD DOM
7-06 2x 365d 35610 4.0 1431 3.1 1103

Ms Atlees Sht Aftershock

65249839 *TV *TL *TY *TD
PTA +472M +23F +1P 99%R 4/14
PTA +3.12T +2.58UDC +2.05FLC 99%R
GTPI +1768G

Amlaird Lee Alice-ET

7293258C Excellent-94 EEEEE 2E
7-05 2x 365d 36980 50 1837 3.2 1186
4-02 2x 365d 31530 4.8 1500 3.2 1008
Life: 2059d 129610 4.8 6177 3.3 4334
• All-American Junior 2-Year-Old 2003

3rd thru 4th Dams

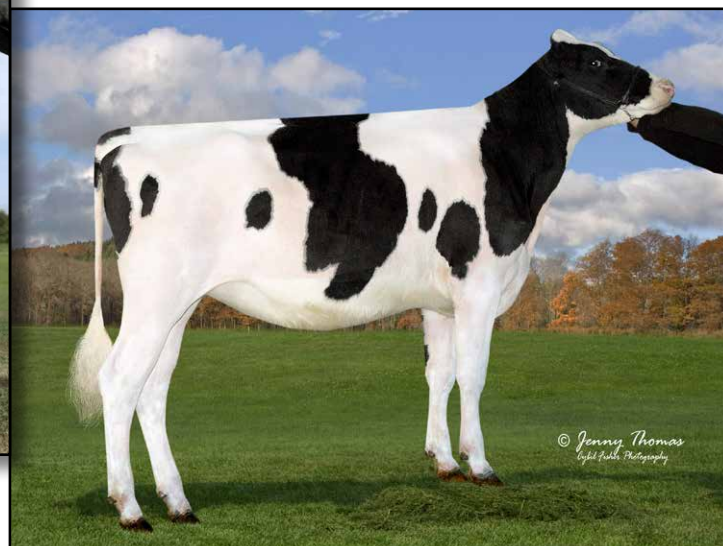
Ms Kingstead Chief Adeen-ET

EX-94 2E DOM
3-05 2x 310d 30180 4.0 1209 3.4 1020
Life: 1382d 100760 4.0 4010 3.4 3458

- 2x Member All-American Produce
 - Nom All-American Jr 3-Yr Old
 - Nom All-American 4-Yr Old
 - Dam of 16 VG and 11 EX Offspring
- #### C Aitkenbrae Starbuck Ada EX-94 2E DOM
- 13-8 2x 365d 25150 3.0 764 3.2 796
• All-American Produce of Dam 2000
• 1st Eastern Nat'l 3-Yr Old & Grand Ch 1990



BROOKVIEW-E MOVIESTAR-ET VG-86 VG-MS
2ND DAM OF LOT 21



MS MOVIESTAR MAVIS
DAM OF LOT 21

21

THREE #1 EMBRYOS

• Worldwide Export Available

Holstein Plaza Contacts:

Steve Mower +1 240-520-5906

Jennifer Dingbaum +1 320-250-2412

SEXED
semen

De-Su Distinction 11130-ET (SEXED)

70625882 *TR *TV *L *TY *TD
PTA +1414M +94F +52P 76%R 4/14
PTA +792NM\$ +5.4PL 2.83SCS +0.9DPR
PTA +2.60T +2.36UDC +1.02FLC 76%R
GTPI +2348G

Ms Moviestar Mavis

71494860 Born: September 5, 2012
GTPI+2127 +1218M +45F +29P +2.06T
• Full sister to Mr Moviestar Mardi Gras
GTPI+2470 @ Jetstream Genetics

Ladys-Manor PL Shamrock-ET

68977120 Very Good-85 *TR *TV *TL *TY
PTA +1399M +61F +29P 99%R 4/14
PTA +2.35T +2.13UDC +0.76FLC 96%R
GTPI +2123G

Clear-Echo M-O-M 2150-ET

68669750 VG-87 EX-MS @ 2-06 DOM
2-02 2x 183d 18678 3.9 728 3.1 579 inc.

Mountfield SSI Dcy Mogul

3006972816 *TV *TL *TY *TD
PTA +1377M +79F +49P 78%R 4/14
PTA +2.81T +2.99UDC +2.78FLC 77%R
GTPI+2394G

Brookview-E Moviestar-ET

140301401 Very Good-86 VG-MS
2-07 2x 365d 31200 4.6 1440 3.4 1069

3rd thru 9th Dams

Carters-Corner Shot Melody

EX-90 EEEEEV DOM
2-03 2x 305d 28070 4.7 1312 3.4 957
Pine-Tree Missy Melinda-ET VG-85 DOM
2-02 2x 365d 29259 4.5 1323 3.4 996
6-02 2x 176d 18750 4.3 798 3.2 600

Wesswood-HC Rudy Missy-ET

EX-92 3E DOM
4-11 3x 365d 40880 4.1 1665 3.2 1308
Life: 1262d 119610 4.1 4885 3.2 3804

Wesswood Elton Mimi EX-90 GMD DOM

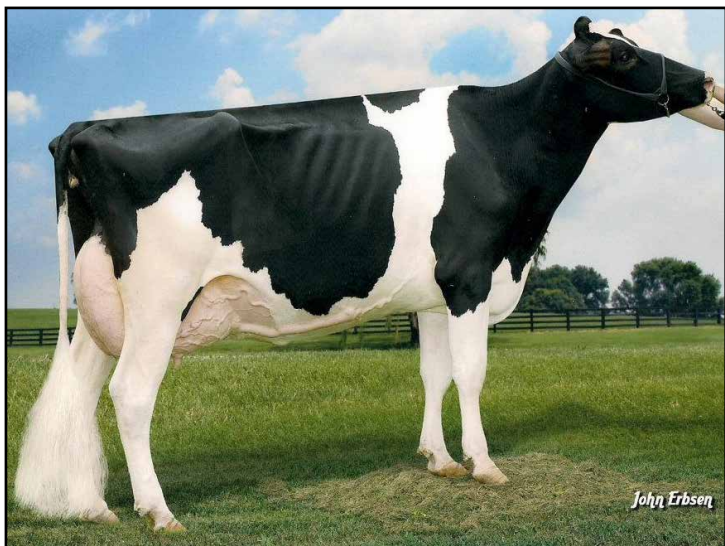
3-05 2x 365d 35380 3.3 1160 3.2 1121
Wesswood Mandingo Ivy VG-87 VEEVV
6-05 2x 365d 36330 3.6 1305 3.0 1087
Life: 1835d 144060 3.4 4933 3.1 4412

Wesswood Astro Matt Esther

VG-87 GMD DOM
6-08 2x 365d 31860 3.5 1125 3.1 982
Life: 1847d 140110 3.6 5029 3.2 4424

Wesswood Bell Claudette

VG-87 GMD DOM
9-10 2x 365d 38810 3.6 1383 2.9 1140
Life: 3634d 280980 3.6 9997 3.1 8625



MISS AD GBM MAYDAY-ET *RC EX-93 EEEEE
DAM OF LOT 21



GBM DURHAM BC ANNABELL EX-90 EX-MS DOM
3RD DAM OF LOT 21

21

FIVE #1 EMBRYOS

- Worldwide Export Available

Holstein Plaza Contacts:

Steve Mower +1 240-520-5906

Jennifer Dingbaum +1 320-250-2412

Maple-Downs-I G W Atwood-ET

8956379C Very Good-87 *TV *TL *TY *TD
PTA +294M +51F +15P 99%R 4/14
PTA +219NM\$ +1.0PL 2.97CS -2.5DPR
PTA +4.66T +3.51UDC +3.74FLC 99%R
GTPI +1942G

Miss Ad GBM Mayday-ET *RC

140051155 Excellent-94 EEEEE 2E
5-08 2x 365d 32950 4.3 1431 3.4 1104
4-02 2x 365d 31410 4.4 1396 3.6 1118
3-02 2x 365d 23460 5.2 1224 3.6 837
2-01 2x 329d 17690 4.2 741 3.6 629
Life: 1557d 112120 4.6 5160 3.6 3983
• 1st Aged Cow, WI District 3 Show 2013
• HM All-WI Aged Cow 2013

Braedale Goldwyn

CAN 10705608 GP-CAN EX'05 *TV *TL
PTA -9M +31F +13P 99%R 4/14
PTA +2.80T +2.45UDC +2.36FLC
GTPI +1879G

MD-Delight Durham Atlee-ET

131704103 Excellent-92 EEEEE DOM
3-11 2x 365d 38290 5.5 2091 3.1 1177
• All-American Senior 3-Year-Old 2005

KHW Kite Advent-Red-ET

133002953 Excellent-95 *TV *TL *TD
PTA -973M -10F -20P 99%R 4/14
PTA +2.57T +2.27UDC +1.64FLC
GTPI +1591G

GBM Sultry Summer

136542638 Very Good-87 VG-MS @ 4-07
3-09 2x 365d 20690 5.0 1043 3.5 717
2-04 2x 365d 15610 5.5 852 3.6 569
sired by: Pursuit September Storm

3rd thru 8th Dams

GBM Durham BC Annabell

EX-90 EX-MS DOM
2-03 2x 365d 40670 4.1 1673 3.0 1202
Life: 1449d 118720 4.4 5253 3.3 3961
• 8 Excellent and 23 Very Good daughters

GBM Charles Janelle

EX-93 EX-MS 2E DOM
6-03 2x 365d 31640 4.6 1471 3.3 1054
Life: 2347d 137890 4.8 6645 3.6 4953

GBM Val Blackstar Jean-ET EX-94 3E GMD

8-05 2x 365d 37180 3.9 1458 3.0 1119
Life: 3127d 238190 4.1 9734 3.4 8000

GBM Valiant Janice EX-92 2E DOM

5-09 2x 365d 30860 3.5 1080 3.1 948
Life: 2100d 126200 3.5 4437 3.2 3996

Sylvan-Dell M C Janice EX-91 2E DOM

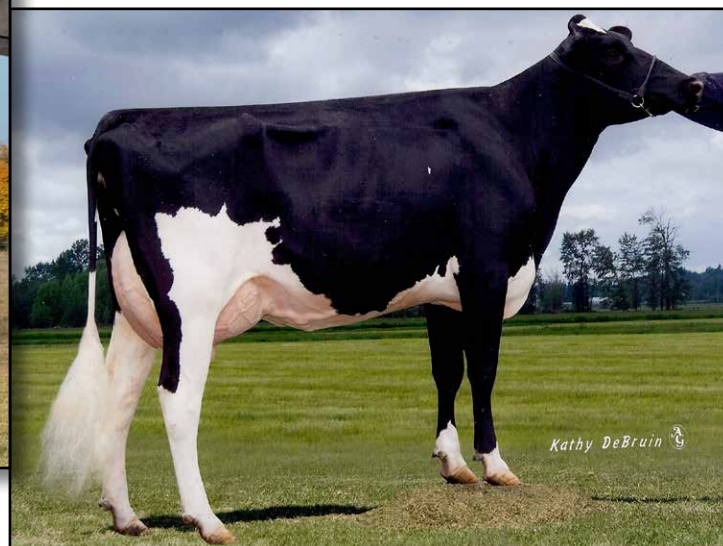
6-03 2x 314d 29600 3.9 1152

Sylvan-Dell Atlas Jill EX-90 2E

4-06 2x 305d 20820 3.5 717



MARKWELL BOLTON CARSYN-ET EX-90 EX-MS
2ND DAM OF LOT 23



RALMA 14-CARAT GOLD-ET EX-90 GMD DOM
3RD DAM OF LOT 23

23

FOUR #1 EMBRYOS

• Worldwide Export Available

Holstein Plaza Contacts:

Steve Mower +1 240-520-5906

Jennifer Dingbaum +1 320-250-2412

Larcrest Commander-ET

58591942 *TV *TL *TY *TD

PTA +1704M +85F +69P 73%R 4/14

PTA +4.7PL 2.73SCS +0.1DPR

PTA +3.25T +2.96UDC +2.51FLC 72%R

GTPI +2473G / GPA-LPI+3339 / RZG+155

Pfaffs Cornet-ET

142265664 Born: January 30, 2013

GTPI+2238 +2026M +71F +65P +3.02T

Mountfield SSI Dcy Mogul

3006972816 *TV *TL *TY *TD

PTA +1377M +79F +49P 78%R 4/14

PTA +2.81T +2.99UDC +2.78FLC 77%R

GTPI+2394G

Larcrest Calinda-ET

70119330

Amighetti Numero Uno-ET

ITA 17990915143 *TV *TL *TY

PTA +740M +80F +37P 78%R 4/14

PTA +2.93T +2.82UDC +1.96FLC 77%R

GTPI +2423G

Markwell Bolton Carsyn-ET *TY

65724153 Excellent-90 EX-MS @ 4-07

4-05 2x 365d 37510 5.1 1898 3.6 1344

2-01 2x 365d 31750 4.3 1360 3.5 1117

3rd thru 7th Dams

Ralma 14-Carat Gold-ET

EX-90 GMD DOM

2-04 2x 365d 30002 4.6 1391 3.6 1069

Ralma Christmas Cookie-ET

VG-89 EX-MS DOM

2-06 2x 365d 28710 4.5 1297 3.4 967

Ralma Christmas Fudge-ET

VG-88 GMD DOM

2-03 2x 365d 31810 4.1 1292 3.2 1027

Ralma Juror Faith EX-91 GMD DOM

4-02 2x 365d 47860 4.5 2165 3.1 1497

Life: 1352d 133520 4.5 5986 3.3 4358

Ralma Leadman Fashion VG-89

4-10 2x 365d 40710 3.7 1494 3.0 1232

Life: 1243d 117710 3.6 4295 3.2 3743



LARCREST CREDIT VG-85 DOM
MATERNAL SISTER TO DAM OF LOT 24



LARCREST COMET-ETS VG-87 DOM
2ND DAM OF LOT 24

24

FOUR #1 EMBRYOS

- Worldwide Export Available

Holstein Plaza Contacts:

Steve Mower +1 240-520-5906

Jennifer Dingbaum +1 320-250-2412

Clear-Echo Lexor Racer-ET

71974211 *TV *TL *TY

PTA +1604M +69F +64P 73%R 4/14

PTA +874NM\$ +6.0PL 2.57SCS +1.7DPR

PTA +2.83T +2.82UDC +1.96FLC 73%R

GTPI +2482G / gRZG+157

Speek-NJ Fer Bing Crosby-ET

71619109 Born: January 8, 2013

GTPI+2216 +1126M +92F +49P +2.53T

Maternal sister to Bing Crosby

Larcrest Credit-ET VG-85 DOM

GTPI+2221 +1927M +73F +56P +2.05T

2-06 2x 181d 18774 3.7 649 3.3 615 inc.

- Sired by: Badger-Bluff Fanny Freddie

Generations Lexor

11098658C *TV *TL

PTA +1308M +86F +68P 77%R 4/14

PTA +2.50T +1.70UDC +2.18FLC 77%R

GTPI +2281G

Clear-Echo Observer 2280-ET

68669880 Good Plus-84

2-01 3x 280d 22539 3.7 823 3.1 695

Cabon Fernand

FRA 2941261203 *TV *TL *TY

PTA +1301M +94F +57P 76%R 4/14

PTA +2.12T +1.90UDC +1.82FLC 75%R

GTPI +2230G

Larcrest Comet-ETS

53766363 Very Good-87 DOM @ 3-01

GTPI+2076 +1441M +93F +51P +2.20T

2-02 2x 305d 28190 4.3 1205 3.3 921

- 10 daughters over +2300G
- Full sister to Larcrest Cancun at ABS
- Full sister to O-Cosmopolitan

3rd thru 6th Dams

Larcrest Cosmopolitan VG-87 DOM

2-04 2x 365d 30930 4.1 1261 3.6 1119

Larcrest Oside Champagne-TW

EX-90 GMD DOM

2-03 2x 365d 29110 4.5 1322 3.7 1077

- 17 sons in A.I. worldwide

Larcrest Juror Chanel EX-93 3E GMD DOM

9-00 2x 365d 48460 4.0 1943 3.4 1648

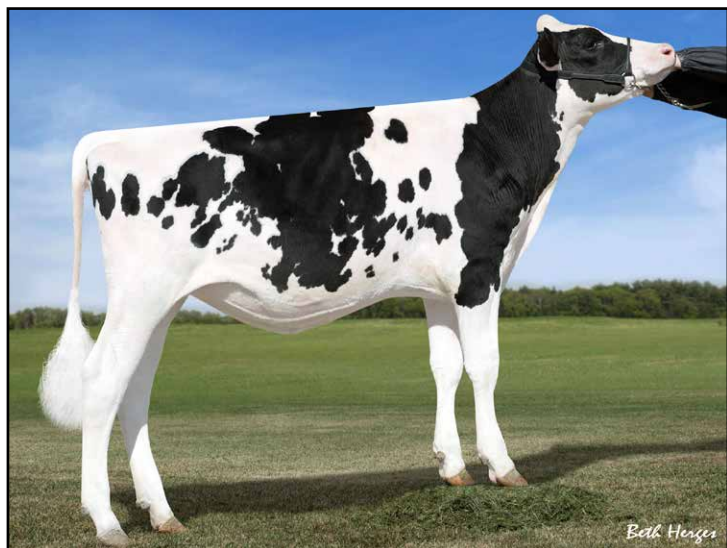
Life: 2899d 245420 4.3 10482 3.6 8866

Larcrest Lindy Chandra VG-85

2-05 2x 365d 20896 4.8 993 3.8 803

Larcrest Inspiration Carly VG-87

3-05 2x 305d 21800 4.5 973 3.3 802



SPEEK-NJ CARROT CAKE-ET
FULL SISTER TO DAM OF LOT 25



LARCREST CREDIT-ET VG-85-2YR
2ND DAM OF LOT 25

25

FOUR #1 EMBRYOS

- Worldwide Export Available

Holstein Plaza Contacts:

Steve Mower +1 240-520-5906
Jennifer Dingbaum +1 320-250-2412

Morningview Mcc Kingboy-ET

72044077 *TV *TL *TY *TD
PTA +1927M +72F +63P 74%R 4/14
PTA +846NM\$ +6.1PL 2.74SCS +1.8DPR
PTA +3.92T +3.09UDC +2.85FLC 74%R
GTPI +2602G

Speak-NJ Cheddar Cheese-ET

71619118 Born: January 10, 2013
GTPI+2289 +1808M +90F +54P +2.23T

Maternal sisters to Cheddar Cheese

Speak-NJ Predest Crumpet-ET

GTPI+2554 +1004NM\$ +2.59T

De-Su Bkm McCutchen 1174-ET

69990138 *TV *TL *TY *TD
PTA +1277M +66F +51P 78%R 4/14
PTA +3.72T +3.36UDC +2.57FLC 78%R
GTPI +2384G

Morningview Super Megan

68654508 Very Good-85 VG-MS
2-01 3x 280d 22539 3.7 823 3.1 695 inc.

Cabon Fernand

FRA2941261203 *TV *TL *TY
PTA +1349M +93F +57P 76%R 12/13
PTA +2.09T +1.96UDC +1.94FLC 75%R
GTPI +2256G

Larcrest Credit-ET

56265392 Very Good-85 @ 2-11
GTPI+2221 +1927M +73F +56P +2.05T
2-06 2x 181d 18774 3.7 649 3.3 615 inc.
sired by: Badger-Bluff Fanny Freddie

3rd thru 7th Dams

Larcrest Comet-ETS VG-87 DOM

2-02 2x 305d 28190 4.3 1205 3.3 921

- Full sister to Larcrest Cancun at ABS

- Full sister to O-Cosmopolitan

Larcrest Cosmopolitan VG-87 DOM

2-04 2x 365d 30930 4.1 1261 3.6 1119

Larcrest Oside Champagne-TW

EX-90 GMD DOM

2-03 2x 365d 29110 4.5 1322 3.7 1077

- 17 sons in A.I. worldwide

Larcrest Juror Chanel EX-93 3E GMD DOM

9-00 2x 365d 48460 4.0 1943 3.4 1648

Life: 2899d 245420 4.3 10482 3.6 8866

Larcrest Lindy Chandra VG-85

2-05 2x 365d 20896 4.8 993 3.8 803

Larcrest Inspiration Carly VG-87

3-05 2x 305d 21800 4.5 973 3.3 802



TRAMILDA OBSERVER LYNN VG-85 87-MS
DAM OF LOT 19



TRAMILDA SOCRATES LIL LYNN VG-87 VG-MS
2ND DAM OF LOT 19

26

THREE #1 EMBRYOS

• Worldwide Export Available

Holstein Plaza Contacts:

Steve Mower +1 240-520-5906

Jennifer Dingbaum +1 320-250-2412

Morningview Mcc Kingboy-ET

72044077 *TV *TL *TY *TD

PTA +1927M +72F +63P 74%R 4/14

PTA +846NM\$ +6.1PL 2.74SCS +1.8DPR

PTA +3.92T +3.09UDC +2.85FLC 74%R

GTPI +2602G

Tramilda Observer Lynn

141057743 Very Good-85 87-MS @ 3-01

GTPI+2140 +1020M +41F +22P +2.68T

2-02 2x 183d 12580 6.1 773 2.9 371 inc.

• Outcross Maternal Line Sire Stack -

NO Shottle, Goldwyn, Bolton or Durham!

De-Su Bkm McCutchen 1174-ET

69990138 *TV *TL *TY *TD

PTA +1277M +66F +51P 78%R 4/14

PTA +3.72T +3.36UDC +2.57FLC 78%R

GTPI +2384G

Morningview Super Megan

68654508 Very Good-85 VG-MS

2-01 3x 280d 22539 3.7 823 3.1 695 inc.

De-Su Observer-ET

65917481 VG-88 *TR *TV *TL *TY *TD

PTA +1476M +50F +45P 99%R 4/14

PTA +2.70T +3.02UDC +0.41FLC

GTPI +2168G

Tramilda Socrates Lil Lynn

139814532 Very Good-87 VG-MS @ 3-11

1-11 2x 305d 18490 4.0 733 3.0 546

3rd thru 11th Dams

Tramilda Lou Amy Joy-ET VG-85 VG-MS

1-11 2x 365d 23570 3.6 842 3.0 697

Diamond-Oak Amy Lynn-ET

VG-86 VG-MS

2-04 2x 361d 23430 4.2 992 3.2 760

Askew Rudolph Amanda-ET

VG-86 GMD DOM

3-07 2x 365d 38400 3.9 1507 3.2 1247

Diamond-Oak Afton-ET

VG-85 GMD DOM

2-08 2x 305d 32590 4.5 1465 3.8 1252

Diamond-Oak Angel-ET

VG-86 GMD DOM

2-11 2x 305d 25740 4.2 1085 3.1 798

Fisher-Place M Amanda-ET

EX-94 3E GMD DOM

7-00 2x 365d 37640 4.0 1498 3.2 1218

Wapa Bootmaker Mandy

EX-96 3E GMD DOM

7-03 2x 305d 3030 3.7 1217

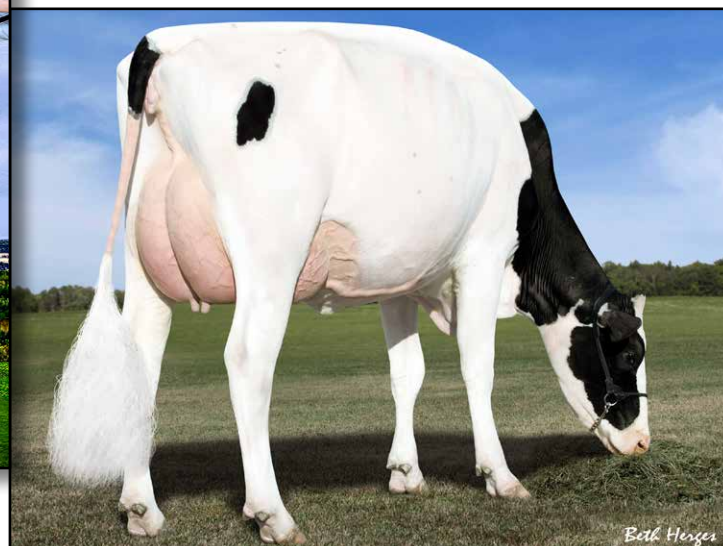
• All-American 2-Year-Old 1975

Wapa Fury Bell EX-91 2E EX-MS

7-02 2x 305d 21130 4.0 961



JOSEY-LLC UNO SANGARIA *RC
MATERNAL SISTER TO LOT 27



DES-Y-GEN PLANET SILK-ET *RC EX-90 91-MS
2ND DAM OF LOT 27

27

FIVE #1 EMBRYOS

• Worldwide Export Available

Holstein Plaza Contacts:

Steve Mower +1 240-520-5906
Jennifer Dingbaum +1 320-250-2412

Larcrest Commander-ET

58591942 *TV *TL *TY *TD
PTA +1704M +85F +69P 73%R 4/14
PTA +4.7PL 2.73SCS +0.1DPR
PTA +3.25T +2.96UDC +2.51FLC 72%R
GTPI +2473G / GPA-LPI+3339 / RZG+155

Josey-LLC Day Suzie-ET

71661946 Born: February 1, 2013
GTPI+2254 +1230M +69F +41P +2.49T

Maternal sister to:

Dymentholm Sunview Sassy-ET *RC

GTPI+2436 +845NM\$ +2.88T

Josey-LLC Uno Sangaria-ET *RC

GTPI+2386 +769NM\$ +3.34T

Mountfield SSI Dcy Mogul

3006972816 *TV *TL *TY *TD
PTA +1377M +79F +49P 78%R 4/14
PTA +2.81T +2.99UDC +2.78FLC 77%R
GTPI+2394G

Larcrest Calinda-ET

70119330

Minnigan-Hills Day-ET

69774730 *TV *TL *TY *TD
PTA +1298M +47F +41P 77%R 4/14
PTA +2.93T +2.80UDC +2.07FLC 76%R
GTPI +2324G

Des-Y-Gen Planet Silk-ET *RC *TY

106109413C Excellent-90 EX-MS @ 4-03
GTPI+2076 +1215M +80F +38P +1.98T
2-02 2x 365d 29990 4.5 1351 3.2 960
• #15 GTPI *RC Cow, Locator List 4/14
• Nominated HI Global Red Impact Cow
• Dam of Sympatico, Seneca and Stoic

3rd thru 12th Dams

Gen-I-Beq Bolton Silence *RC

VG-85-2YR-CAN
2-04 2x 365d 30002 4.6 1391 3.6 1069

Gen-I-Beq Goldwyn Secret VG-87-CAN 4*

5-05 2x 365d 30573 4.5 1389 3.4 1038

Gen-I-Beq Durham Sherry VG-87-CAN 7*

5-02 2x 365d 40036 3.9 1574 3.2 1268

Glen Drummond Splendor

VG-86-2YR-CAN 36*

4-10 2x 314d 26510 4.2 1124 3.2 840

Glen Drummond Aero Flower

VG-88-CAN 18*

2-03 2x 326d 25622 4.0 1032 3.4 882

Glen Drummond Shower EX-CAN 13*

4-10 2x 365d 28583 4.8 1380 3.6 1016

Glen Drummond S C Jo Beth

EX-2E-CAN 7*

Life (6 Lacs): 141637 4.2 5994 3.2 3593

• Grand Champion Brant-Wentworth 1984

Glen Drummond Matt Beth VG-85 4*

11-10 2x 365d 25038 3.7 935

Life (5 Lacs): 105953 4.1 4295

Glen Drummond Marquis Beth VG-CAN

Life (8 Lacs): 112688 4.2 4766

Ferglynn Rag Apple Bertha VG-CAN 3*

7-00 2x 365d 27796 4.7 1303

Life (9 Lacs): 208857 4.0 8344



**GBM KAM GOLDWYN LUCKY-ET EX-92 EX-MS 2E
DAM OF LOT 28**

28

SIX #1 EMBRYOS

• Worldwide Export Available

Holstein Plaza Contacts:

Steve Mower +1 240-520-5906

Jennifer Dingbaum +1 320-250-2412

Sonnek GC Corvette-ET

71391400 *TV *TL *TY *TD

PTA +450M +29F +20P 76%R 4/14

PTA +1.1PL 2.64SCS -0.4DPR

PTA +4.17T +3.15UDC +4.03FLC 76%R

GTPI +2085G

GBM Kam Goldwyn Lucky-ET

138128809 Excellent-92 EEEEE 2E

5-03 2x 365d 35200 3.9 1363 3.2 1143

3-07 2x 365d 30210 4.3 1298 3.2 971

2-05 2x 365d 24020 4.8 1150 3.1 756

Mr Chassity Gold Chip-ET

140145553 100%RHA-NA *TR *TV *TL

PTA +211M +23F +0P 94%R 4/14

PTA +3.70T +3.31UDC +3.16FLC 89%R

GTPI +1996G

Sonnek Damion Charlie-ET

138545776 Excellent-94 EEEEE

3-04 2x 365d 26240 4.0 1050 3.5 992

Braedale Goldwyn

CAN 10705608 GP-CAN EX'05 *TV *TL

PTA -9M +31F +13P 99%R 4/14

PTA +2.80T +2.45UDC +2.36FLC

GTPI +1879G

Mega-Gold Astre Brea-ET

15727340 Excellent-93 EEEEE 3E

8-02 2x 365d 30790 3.5 1067 3.0 934

4-10 2x 365d 27330 4.1 1125 3.3 905

6-02 2x 365d 26620 3.9 1041 3.2 848

Life: 2489d 178120 3.7 6610 3.2 5687

3rd & 4th Dams

Mega-Gold Barbs Brilliance VG-87

3-07 2x 365d 29010 4.0 1152 3.2 928

Life: 1319d 102650 3.9 4017 3.2 3299

Hilltop-Retreat Banner Barb

EX-90 EEEVV @ 5-02

3-07 2x 365d 30120 3.4 1034 3.1 948

Life: 1388d 103920 3.6 3720 3.1 3270



GBM KAM GOLDWYN LUCKY-ET EX-92 EX-MS 2E
DAM OF LOT 29

29

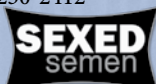
FOUR #1 EMBRYOS

• Worldwide Export Available

Holstein Plaza Contacts:

Steve Mower +1 240-520-5906

Jennifer Dingbaum +1 320-250-2412



De-Su Bkm McCutchen 1174-ET (SEXED)

69990138 *TV *TL *TY *TD

PTA +1277M +66F +51P 78%R 4/14

PTA +3.6PL 2.81SCS +0.4DPR

PTA +3.72T +3.36UDC +2.57FLC 78%R

GTPI +2384G

GBM Kam Goldwyn Lucky-ET

138128809 Excellent-92 EEEEE 2E

5-03 2x 365d 35200 3.9 1363 3.2 1143

3-07 2x 365d 30210 4.3 1298 3.2 971

2-05 2x 365d 24020 4.8 1150 3.1 756

De-Su 521 Bookem-ET

66636657 *TR *TV *TL *TY *TD

PTA +1585M +49F +61P 99%R 4/14

PTA +2.62T +2.14UDC +1.64FLC 97%R

GTPI +2279G

Sully Shottle May-TW

138218285 Excellent-90 EEEEE DOM

5-04 2x 365d 38970 3.5 1354 3.1 1226

Braedale Goldwyn

CAN 10705608 GP-CAN EX'05 *TV *TL

PTA -9M +31F +13P 99%R 4/14

PTA +2.80T +2.45UDC +2.36FLC

GTPI +1879G

Mega-Gold Astre Brea-ET

15727340 Excellent-93 EEEEE 3E

8-02 2x 365d 30790 3.5 1067 3.0 934

4-10 2x 365d 27330 4.1 1125 3.3 905

6-02 2x 365d 26620 3.9 1041 3.2 848

Life: 2489d 178120 3.7 6610 3.2 5687

3rd & 4th Dams

Mega-Gold Barbs Brilliance VG-87

3-07 2x 365d 29010 4.0 1152 3.2 928

Life: 1319d 102650 3.9 4017 3.2 3299

Hilltop-Retreat Banner Barb

EX-90 EEEVV @ 5-02

3-07 2x 365d 30120 3.4 1034 3.1 948

Life: 1388d 103920 3.6 3720 3.1 3270



ASTRAHOE STORMATIC RADIANT EX-91 2E GMD
2ND DAM OF LOT 30

30

Holstein Plaza Contacts:

Steve Mower +1 240-520-5906
Jennifer Dingbaum +1 320-250-2412

Mr Atwood Brokaw-ET

140602463 *TR *TV *TL *TD
PTA +292M +30F +21P 77%R 4/14
PTA -1.3PL 3.12SCS -0.8DPR
PTA +4.53T +3.85UDC +3.00FLC 77%R
GTPI +1915G

Castleholm Radiants Girl-ET

69835856 Very Good-85 VG-MS @ 2-05
2-01 2x 365d 29430 3.4 991 3.4 1015
• Potential 15th Generation Excellent

FIVE #1 EMBRYOS

• Worldwide Export Available

Maple-Downs-I G W Atwood-ET

8956379C Very Good-87 *TV *TL *TY *TD
PTA +294M +51F +15P 99%R 4/14
PTA +4.66T +3.51UDC +3.74FLC 99%R
GTPI +1942G

Regancrest Mac Bikasa

63606799 Very Good-89-5YR-CAN
4-09 2x 305d 32588 4.5 1473 3.3 1063

Braedale Goldwyn

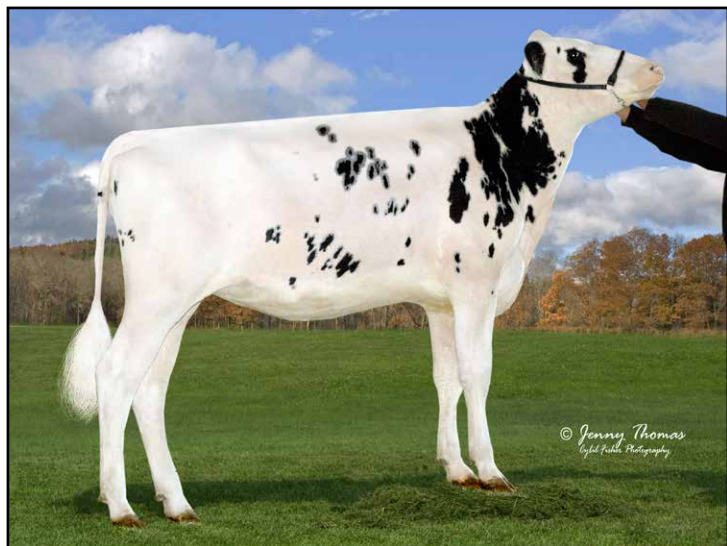
CAN 10705608 GP-CAN EX'05 *TV *TL
PTA -9M +31F +13P 99%R 4/14
PTA +2.80T +2.45UDC +2.36FLC
GTPI +1879G

Astrahoe Stormatic Radiant

134908690 Excellent-91 2E GMD
5-02 3x 365d 49840 4.2 2087
2-03 3x 305d 36440 3.9 1416 3.1 1133
3-05 3x 365d 36260 3.7 1356 3.6 1313

3rd thru 15th Dams

Astrahoe LJ Rosa Rebel EX-92 2E
7-05 2x 365d 48580 4.2 2021 3.0 1468
Pinehurst Royal Rosa-ET EX-91 2E
3-10 3x 365d 41395 3.3 1358 2.8 1145
Life: 1212d 115400 3.5 4073 3.1 3593
Pinehurst Roulade EX-92 EEEEE 2E
5-00 3x 365d 35130 3.6 1271 3.2 1115
Life: 1761d 142070 3.8 5395 3.3 4705
Pinehurst Sweet Cleo EX-90 EEEVEV
6-00 3x 365d 40380 4.4 1776 3.2 1305
Pinehurst Sweet Freedom EX-90 VEVE
5-07 3x 330d 34520 4.3 1500 3.1 1084
Pinehurst Sweet Delite EX-91 3E GMD
8-10 3x 365d 28460 4.2 1194 3.2 917
Life: 2228d 151600 4.0 6116 3.2 4907
Pinehurst Rapture EX-96 4E GMD
8-02 3x 365d 30370 4.2 1290 3.1 948
Life: 2297d 160790 3.9 6337 3.0 2469
Pinehurst Fragrance EX-90 2E
4-8 3x 365d 34490 3.6 1234
Hayssen Fond Ariel EX-90 2E
8-06 2x 328d 23330 3.2 753
Hayssen D V Audrey EX-90 2E
9-03 2x 365d 23670 4.4 1035
Whirlhill Q Rag Apple Ariel EX-92
6-02 2x 365d 26755 4.2 1134
Arlite Posch EX-92 GMD
5-03 2x 365d 21193 3.7 779
Audrey Posch EX-93 GMD
14-2 2x 365d 25572 3.7 948



MS EMILY EGLANTINE-ET
DAM OF LOT 31



TRAMILDA-N BAXTER EMILY VG-85-USA 2YR
2ND DAM OF LOT 31

31

ONE #1 AND ONE #2 EMBRYOS

- Worldwide Shipment Available

Holstein Plaza Contacts:

Steve Mower +1 240-520-5906
Jennifer Dingbaum +1 320-250-2412



Butz-Hill Megasire-ET (SEXED)

71088720 *TV *TL *TY *TD
PTA +1316M +86F +61P 73%R 4/14
PTA +5.4PL 2.70SCS +1.7DPR
PTA +2.91T +2.77UDC +2.73FLC 72%R
GTPI +2537G

Ms Emily Eglantine-ET

71994202 Born: August 14, 2012
GTPI+2202 +658M +69F +32P +1.62T

Seagull-Bay Supersire-ET

69981349 *TV *TL *TY *TD
PTA +2434M +111F +78P 76%R 4/14
PTA +2.40T +1.71UDC +1.28FLC 76%R
GTPI +2420G

Morsan Man D Missy-ET

69320673 Very Good-85
2-04 2x 305d 20450 5.5 1124 3.7 760

Air-Osa Excel AltaAirnet

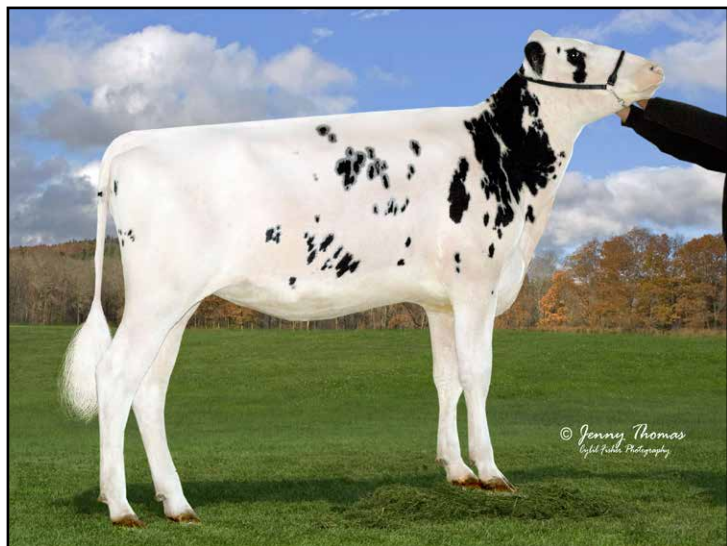
68769438 *TV *TL *TY *TD
PTA +1141M +45F +45P 77%R 4/14
PTA +1.96T +1.55UDC +0.76FLC 76%R
GTPI+2096G

Tramilda-N Baxter Emily

139232811 VG-85-2YR-CAN VG-MS
GTPI+2141 +969M +60F +30P +2.18T
2-05 2x 282d 30946 4.2 1287 3.2 1001
• Full sister to Tramilda-N Escalade
• Dam to Emmett, Epic and Highway

3rd thru 13th Dams

Wabash-Way Evett-ET VG-86 DOM
2-02 2x 365d 34187 4.9 1660 3.1 1046
Crockett-Acres Elita-ET VG-87 DOM
2-02 2x 365d 39010 3.8 1480 3.5 1383
Crockett -Acres Mtot Elly-ET
EX-90 EX-MS GMD DOM
6-04 2x 283d 38840 3.3 1286 3.4 1302
Wauregan Rudolph Ellymae-ET EX-90
4-06 3x 365d 40210 3.6 1455 3.4 1375
Whittier-Farms Lead Mae-ET
EX-95 3E GMD
8-07 3x 357d 41270 4.8 1962 3.5 1440
Life: 1613d 126960 4.3 5473 3.6 4597
Raymau Bstar Monica-ET VG-89 DOM
2-01 2x 146d 12280 3.8 471 3.3 405
Juniper Jason Maria VG-87 EX-MS DOM
2-03 2x 365d 20260 4.3 868 3.6 736
JDM-Pride Valiant Maggie
EX-91 GMD DOM
6-00 2x 365d 35540 4.1 1441 3.3 1186
Life: 1666d 119120 4.2 5002 3.6 4281
La-Ko-Land Penstate Sadie
VG-87 GMD DOM
8-03 2x 336d 24420 3.3 818 3.2 781
Life: 2480d 166909 3.5 5732 3.2 2854
La-Ko-Land Bootmaker Sally VG-86
5-10 2x 365d 24450 4.1 1010
La-Ko-Land Monitor Nancy EX-90
10-11 3x 320d 19670 3.1 619
Life: 2381d 145490 3.0 4442



MS EMILY EGLANTINE-ET
DAM OF LOT 31



TRAMILDA-N BAXTER EMILY VG-85-USA 2YR
2ND DAM OF LOT 31

31

Holstein Plaza Contacts:

Steve Mower +1 240-520-5906
Jennifer Dingbaum +1 320-250-2412

De-Su Nominee-ET

70626023 *TY
PTA +1505M +66F +58P 73%R 4/14
PTA +5.1PL 2.60SCS +2.3DPR
PTA +2.15T +1.91UDC +1.96FLC 72%R
GTPI +2374G

Ms Emily Eglantine-ET

71994202 Born: August 14, 2012
GTPI+2202 +658M +69F +32P +1.62T

THREE #1 NOMINEE EMBRYOS TWO #2 SEXED DISTINCTION EMBRYOS

• Worldwide Shipment Available



De-Su Distinction 11130-ET (SEXED)

70625882 *TR *TV *L *TY *TD
PTA +1414M +94F +52P 76%R 4/14
PTA +792NM\$ +5.4PL 2.83SCS +0.9DPR
PTA +2.60T +2.36UDC +1.02FLC 76%R
GTPI +2348G

Air-Osa Excel AltaAirnet

68769438 *TV *TL *TY *TD
PTA +1141M +45F +45P 77%R 4/14
PTA +1.96T +1.55UDC +0.76FLC 76%R
GTPI+2096G

Tramilda-N Baxter Emily

139232811 VG-85-2YR-CAN VG-MS
GTPI+2141 +969M +60F +30P +2.18T
2-05 2x 282d 30946 4.2 1287 3.2 1001
• Full sister to Tramilda-N Escalade
• Dam to Emmett, Epic and Highway

3rd thru 13th Dams

Wabash-Way Evett-ET VG-86 DOM
2-02 2x 365d 34187 4.9 1660 3.1 1046
Crockett-Acres Elita-ET VG-87 DOM
2-02 2x 365d 39010 3.8 1480 3.5 1383
Crockett -Acres Mtot Elly-ET
EX-90 EX-MS GMD DOM
6-04 2x 283d 38840 3.3 1286 3.4 1302
Wauregan Rudolph Ellymae-ET EX-90
4-06 3x 365d 40210 3.6 1455 3.4 1375
Whittier-Farms Lead Mae-ET
EX-95 3E GMD
8-07 3x 357d 41270 4.8 1962 3.5 1440
Life: 1613d 126960 4.3 5473 3.6 4597
Raymau Bstar Monica-ET VG-89 DOM
2-01 2x 146d 12280 3.8 471 3.3 405
Juniper Jason Maria VG-87 EX-MS DOM
2-03 2x 365d 20260 4.3 868 3.6 736
JDM-Pride Valiant Maggie
EX-91 GMD DOM
6-00 2x 365d 35540 4.1 1441 3.3 1186
Life: 1666d 119120 4.2 5002 3.6 4281
La-Ko-Land Penstate Sadie
VG-87 GMD DOM
8-03 2x 336d 24420 3.3 818 3.2 781
Life: 2480d 166909 3.5 5732 3.2 2854
La-Ko-Land Bootmaker Sally VG-86
5-10 2x 365d 24450 4.1 1010
La-Ko-Land Monitor Nancy EX-90
10-11 3x 320d 19670 3.1 619
Life: 2381d 145490 3.0 4442



**BREMER ACTIVE CHARM-ET VG-86 VG-MS @ 2-06
DAM OF LOT 33**

33

Holstein Plaza Contacts:

Steve Mower +1 240-520-5906
Jennifer Dingbaum +1 320-250-2412

Cookiecutter Petron Halogen

3008710387 *TV *TL *TY *TD
PTA +949M +56F +38P 73%R 4/14
PTA +8.0PL 2.41SCS +4.1DPR
PTA +2.94T +3.15UDC +1.26FLC 73%R
GTPI +2516G

Bremer Active Charm-ET

66088957 Very Good-86 VG-MS @ 2-06
GTPI+1838 +293M +54F +20P +.99T
2-01 2x 365d 24760 4.7 1163 3.7 917

TWO #1 AND THREE #2 EMBRYOS

• Domestic (U.S.) Shipment Only

Maternal sister to Lot 33

NH Mogul Champ

- One of the highest Outcross Heifers in Europe
- Sold for €26,500 Eurogenes Summer Sale

Welcome Super Petrone-ET

69207641 *TR *TV *TL *TY *TD
PTA +1050M +53F +29P 76%R 4/14
PTA +2.31T +2.26UDC +1.54FLC 76%R
GTPI +2314G

Cookiecutter MOM Halo-ET

3007069733 Very Good-88 EX-MS @ 2-09
2-00 3x 365d 35410 5.2 1832 3.5 1241
2-03 2x 159d 14324 4.3 611 3.2 454

Alpag Iron Active-ET

ITA 6920009167 GM 8/11 *TV *TL
PTA +307M +44F +20P 99%R 4/14
PTA +0.52T +.26UDC -.07FLC
GTPI +1810G

Solid-Gold Cheesecake-ET

60697340 Very Good-88 EX-MS DOM
5-07 2x 365d 40300 4.6 1854 3.4 1384
Life: 1476d 136230 4.3 5804 3.4 4628

• Sired by Comestar Outside-ET

• Sons in AI

Full brother to Cheesecake

Solid-Gold Colby-ET

3rd thru 5th Dams

Ms Solid-Gold Rud Cherry-ET

VG-89 EVVVE @ 3-07
2-04 3x 365d 40010 3.5 1382 3.0 1202
Life: 1499d 124090 3.7 4532 3.1 3907

Whiteleather Conquest 385

EX-93 EEEEE DOM
4-01 3x 365d 36200 3.9 1398 3.0 1100
Life: 1087d 101916 3.5 3586 3.0 3036

Whiteleather Rex SWD Val 2079 EX-91 2E

6-00 2x 365d 30400 4.8 1470 3.0 924
Life: 2130d 133480 4.2 5548 3.2 4246



ASTRAHOE STORMATIC RADIANT EX-91 2E GMD
3RD DAM OF LOT 34

34

Holstein Plaza Contacts:

Steve Mower +1 240-520-5906
Jennifer Dingbaum +1 320-250-2412

Gillette Windbrook

7816429C 91%RHA-NA *TV *TL *TY *TD
PTA +621M +41F +26P 97%R 4/14
PTA +260NM\$ +0.4PL 2.92SCS -1.9DPR
PTA +2.92T +2.14UDC +2.70FLC
GTPI +1850G

Crisdhome Braxton Alcatraz

71226063 Born: September 7, 2012
• Will be pictured this spring!

FIVE #1 EMBRYOS

• *Worldwide Shipment Available*

Gillette Brilea F B I-ET

89524C EX-94-CAN EXTRA'05 *TV *TL
PTA +1473M +39F +35P 99%R 4/14
PTA +1.85T +1.24UDC +1.51FLC
GTPI +1763G

Gillette Blitz 2nd Wind-ET

7352248C VG-88-CAN 34*
2-02 3x 365d 39096 3.6 1422 3.0 1182

Regancrest S Braxton

61898423 EX-95 *TR *TV *TL *TY *TD
PTA +1556M +13F +19P 99%R 4/14
PTA +3.70T +1.97UDC +2.30FLC 98%R
GTPI +1521G

Castleholm Rdiant Alisha-ET

69835864 Very Good-87 VVVVV @ 2-11
2-02 2x 365d 26430 3.9 1027 3.2 849
sired by: *Maple-Downs-I G W Atwood*
• *Fresh again and should easily go Excellent!*

3rd thru 16th Dam

Astrahoe Stormatic Radiant

EX-91 2E GMD
5-02 3x 365d 49840 4.2 2087
Astrahoe LJ Rosa Rebel EX-92 2E
7-05 2x 365d 48580 4.2 2021 3.0 1468

Pinehurst Royal Rosa-ET EX-91 2E
3-10 3x 365d 41395 3.3 1358 2.8 1145
Life: 1212d 115400 3.5 4073 3.1 3593

Pinehurst Roulade EX-92 EEEEE 2E
5-00 3x 365d 35130 3.6 1271 3.2 1115
Life: 1761d 142070 3.8 5395 3.3 4705

Pinehurst Sweet Cleo EX-90 EEVEV
6-00 3x 365d 40380 4.4 1776 3.2 1305
Pinehurst Sweet Freedom EX-90 VEVE
5-07 3x 330d 34520 4.3 1500 3.1 1084

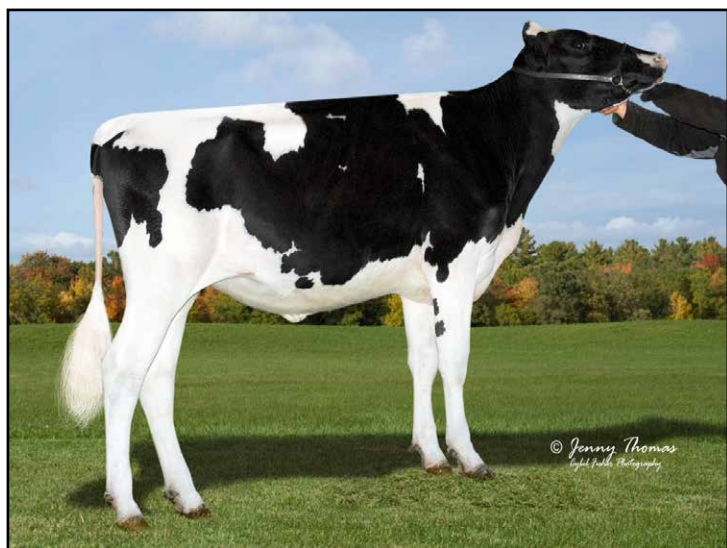
Pinehurst Sweet Delite EX-91 3E GMD
8-10 3x 365d 28460 4.2 1194 3.2 917
Life: 2228d 151600 4.0 6116 3.2 4907

Pinehurst Rapture EX-96 4E GMD
8-02 3x 365d 30370 4.2 1290 3.1 948
Life: 2297d 160790 3.9 6337 3.0 2469

Pinehurst Fragrance EX-90 2E
4-8 3x 365d 34490 3.6 1234
Hayssen Fond Ariel EX-90 2E
8-06 2x 328d 23330 3.2 753

Hayssen D V Audrey EX-90 2E
9-03 2x 365d 23670 4.4 1035
Whirlhill Q Rag Apple Ariel EX-92
6-02 2x 365d 26755 4.2 1134

Arlite Posch EX-92 GMD
5-03 2x 365d 21193 3.7 779
Audrey Posch EX-93 GMD
14-2 2x 365d 25572 3.7 948



TRAMILDA CHIP ROSE-ET
DAM OF LOT 35



KINGSMILL ROY ROULETTE-ET EX-92 2E
2ND DAM OF LOT 35

35

Holstein Plaza Contacts:

Steve Mower +1 240-520-5906

Jennifer Dingbaum +1 320-250-2412



KHW Elm-Park Acme-ET *RC (SEXED)

61720218 Excellent-90 GM *TV *TL *TD
PTA -93M +25F +17P 99%R 4/14
PTA +2.8PL 3.13SCS -.3DPR
PTA +2.68T +2.91UDC +1.36FLC 97%R
GTPI +1845G

Tramilda Chip Rose-ET

141727165

GTPI+1658 +3.19T +2.71UDC +2.08FLC

• *Just Fresh!*

SIX #1 EMBRYOS

• *Worldwide Export Available*

Ladino Park Talent-Imp-ET *RC

AUS 930377 EX-90 ST*03 *TV *TL
PTA -259M -32F +2P 99%R 4/14
PTA +2.09T +2.25UDC +1.07FLC
GTPI +1417G

Kamps-Hollow Altitude-ET *RC

129136431 EX-95 EEEEE 2E DOM
7-00 2x 365d 39690 4.7 1849 3.5 1385

Mr Chassity Gold Chip-ET

140145553 100%RHA-NA *TR *TV *TL
PTA +211M +23F +0P 94%R 4/14
PTA +3.70T +3.31UDC +3.16FLC 89%R
GTPI +1996G

Kingsmill Roy Roulette-ET

63016084 Excellent-92 EEEEE 2E
4-03 2x 310d 23256 3.9 914 3.0 709
2-04 2x 365d 18545 3.8 699 3.1 573
• *14th generation Excellent!*

3rd thru 15th Dams

Astrahoe LJ Rosa Rebel-ET EX-92 2E
7-05 2x 365d 48580 4.2 2021 3.0 1468
Life: 1186d 110960 3.9 4326 3.2 3529
Pinehurst Royal Rosa-ET EX-91 2E
3-10 3x 365d 41395 3.3 1358 2.8 1145
Life: 1212d 115400 3.5 4073 3.1 3593
Pinehurst Roulade EX-92 EEEEE 2E
5-00 3x 365d 35130 3.6 1271 3.2 1115
Life: 1761d 142070 3.8 5395 3.3 4705
Pinehurst Sweet Cleo EX-90 EEEVEV
6-00 3x 365d 40380 4.4 1776 3.2 1305
Pinehurst Sweet Freedom EX-90 VEVE
5-07 3x 330d 34520 4.3 1500 3.1 1084
Pinehurst Sweet Delite EX-91 3E GMD
8-10 3x 365d 28460 4.2 1194 3.2 917
Life: 2228d 151600 4.0 6116 3.2 4907
Pinehurst Rapture EX-96 4E GMD
8-02 3x 365d 30370 4.2 1290 3.1 948
Life: 2297d 160790 3.9 6337 3.0 2469
Pinehurst Fragrance EX-90 2E
4-8 3x 365d 34490 3.6 1234
Hayssen Fond Ariel EX-90 2E
8-06 2x 328d 23330 3.2 753
Hayssen D V Audrey EX-90 2E
9-03 2x 365d 23670 4.4 1035
Whirlhill Q Rag Apple Ariel EX-92
6-02 2x 365d 26755 4.2 1134
Arlite Posch EX-92 GMD
5-03 2x 365d 21193 3.7 779
Audrey Posch EX-93 GMD
14-2 2x 365d 25572 3.7 948



GLORYLAND LAZANDRA RAE-ET EX-90 EX-MS
DAM OF LOT 36



GLORYLAND LANA RAE EX-94 EEEEE 2E DOM
2ND DAM OF LOT 36

36

FOUR #2 EMBRYOS

• Worldwide Export Available

Holstein Plaza Contacts:

Steve Mower +1 240-520-5906

Jennifer Dingbaum +1 320-250-2412

Sonnek GC Corvette-ET

71391400 *TV *TL *TY *TD

PTA +450M +29F +20P 76%R 4/14

PTA +1.1PL 2.64SCS -0.4DPR

PTA +4.17T +3.15UDC +4.03FLC 76%R

GTPI +2085G

Gloryland Lazandra Rae-ET

137410732 Excellent-90 EX-MS

2-11 2x 305d 21310 3.9 829 3.3 704

4-00 2x 365d 20610 4.0 816 3.3 677

2-00 2x 301d 18650 4.2 787 3.4 640

• Fresh again and looks great

Mr Chassity Gold Chip-ET

140145553 100%RHA-NA *TR *TV *TL

PTA +211M +23F +0P 94%R 4/14

PTA +3.70T +3.31UDC +3.16FLC 89%R

GTPI +1996G

Sonnek Damion Charlie-ET

138545776 Excellent-94 EEEEE

3-04 2x 365d 26240 4.0 1050 3.5 992

Ocean-View Zenith-TW-ET

129800008 *TR *TV *TL *TD

PTA -116M +17F +7P 99%R 4/14

PTA +1.20T +1.59UDC -0.57FLC

GTPI +1697G

Gloryland Lana Rae

120348329 Excellent-94 EEEEE 2E DOM

5-06 2x 365d 29011 4.0 1159 3.2 938

Life: 2113d 129620 3.7 4768 3.4 4343

• 16 Excellent daughters all with EX-MS!

3rd thru 9th Dams

Scientific Liza Rae-ET EX-90

4-09 2x 365d 26710 2.9 786 3.3 878

C Hanoverhill Tony Rae

EX-96 3E GMD DOM

6-11 2x 365d 40220 4.1 1661 3.3 1331

Life: 2247d 166396 4.1 6904 3.4 5612

• Grand Champion Western National 1993

C Hanoverhill TT Roxette-ET

EX-94 2E GMD

10-0 3x 365d 35040 4.3 1519 3.0 1063

Life: 2104d 164789 4.1 6760 3.1 3587

Mil-R-Mor Roxette EX-CAN 30*

7-01 2x 365d 24531 4.7 1153

Life (6 Lacs): 121418 4.7 5728

C Glenridge Citation Roxy EX-97 4E GMD

10-1 2x 365d 25280 4.2 1060

Life: 3620d 209784 4.5 9471

• Queen of the Breed I and II

C Norton Court Model Vee EX-90

6-06 2x 365d 22483 3.9 875

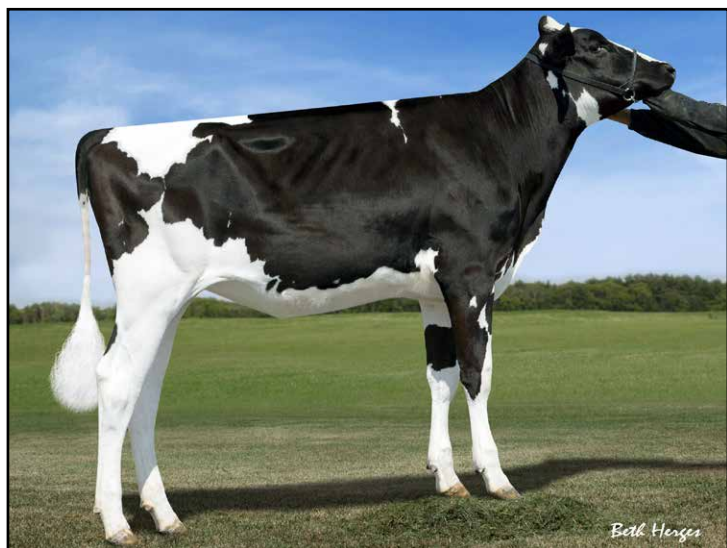
Life: 4183d 218629 3.9 8581

• All-American Produce of Dam 1977, '78, '79

Norton Court Reflection Vale VG-85-CAN 5*

8-11 2x 332d 20631 3.7 765

Life (14 Lacs): 249583 3.7 9295



R-E-W GOLD CHIP DELIGHT-ET
DAM OF LOT 37



REGANCREST-BH DELICA-ET VG-88 VEVVV
3RD DAM OF LOT 37

37

Holstein Plaza Contacts:

Steve Mower +1 240-520-5906
Jennifer Dingbaum +1 320-250-2412

Coyne-Farms Jacey CRI-ET

70541519 *TV *TL *TY *TD
PTA +1722M +67F +66P 76%R 4/14
PTA +832NM\$ +4.8PL 2.49SCS +1.9DPR
PTA +2.57T +2.19UDC +2.39FLC 75%R
GTPI +2465G

R-E-W Gold Chip Delight-ET

71588852 Born: April 19, 2012
GTPI+2192 +358M +30F +15P +3.41T

FIVE #1 EMBRYOS

• Worldwide Export Available

Regancrest AltaIota-ET

61898306 GM 8/11 *TV *TL *TY
PTA +1100M +83F +52P 99%R 4/14
PTA +2.26T +1.92UDC +1.75FLC
GTPI +2236G

Coyne-Farms Mass Jill-ET

68677629
2-03 3x 183d 14679 2.7 399 3.0 436 inc.

Mr Chassity Gold Chip-ET

140145553 100%RHA-NA *TR *TV *TL
PTA +211M +23F +0P 94%R 4/14
PTA +3.70T +3.31UDC +3.16FLC 89%R
GTPI +1996G

Regancrest-BH Super Delish

66625310 Good Plus-83 @ 2-10
GTPI+2049 +840M +15F +18P +2.25T

3rd thru 14th Dams

Regancrest-BH Delica-ET VG-88-3YR
3-05 3x 365d 31810 3.5 1121 2.9 931
Windsor-Manor Z-Delight-ET EX-92 EX-MS
3-08 2x 365d 40820 3.8 1543 3.2 1297
Windsor-Manor Rud Zip
EX-95 3E GMD DOM
4-07 2x 365d 39230 3.8 1490 3.1 1224
Windsor-Manor Jolt Zippy EX-90 3E
7-07 2x 361d 34090 3.7 1255 2.9 987
Life: 2559d 194060 3.8 7368 3.2 6234
Windsor-Manor Che Zipper GP-83 VG-MS
5-03 2x 365d 36410 3.1 1127 2.8 1029
Life: 1846d 167380 3.2 5368 2.9 4907
Windsor-Manor Star Zara EX-91 2E GMD
6-01 2x 365d 41590 3.5 1453 3.2 1315
Life: 2421d 204030 3.7 7450 3.3 6657
Windsor-Manor Melvin Zebra
VG-85 VG-MS
3-08 2x 365d 27820 3.8 1050 3.3 907
Del-Myr Tony Zadie VG-87
2-03 2x 365d 23600 3.5 835 3.4 797
Big-Sinks Jerry Zinna Addie VG-85
3-01 2x 365d 22650 3.0 673 3.1 710
Big-Sinks Elevation Maym Zinna
EX-90 2E GMD
7-10 2x 365d 27240 3.9 1075
Big-Sinks Bootmaker Ariel Maym
VG-85 GMD
4-00 2x 365d 23510 3.5 812
Emperor Alice Ariel VG-85 GMD
Life: 2754d 169080 3.6 6155



MS APPLES ALANNA-ET *RC VG-86 VG-MS @ 2-10
DAM OF LOT 38



KHW REGIMENT APPLE-RED EX-95 DOM
2ND DAM OF LOT 38

38

Holstein Plaza Contacts:

Steve Mower +1 240-520-5906
Jennifer Dingbaum +1 320-250-2412

Palmyra Ladd Man-P *RC

71506037 *RC *PC *TY
PTA +688M +33F +43P 73%R 4/14
PTA +5.8PL 2.86SCS +2.8DPR
PTA +2.75T +2.67UDC +1.90FLC 73%R
GTPI +2260G

Ms Apples Alanna-ET *RC *CV

69822263 Very Good-86 VVVVV @ 2-10
GTPI+1805 +3.12T +2.69UDC +2.91FLC
2-06 2x 181d 14241 4.4 631 3.3 476 inc.
• Last test 83 lb/day with 5.1%F and 3.7%P

Full sister to Alanna

Ms Apples Ainsley-ET *RC VG-86

• Dam of Mr Ansly Addiction-P-Red-ET
GTPI+2255 +3.36PTAT by Ladd-P

SIX #1 EMBRYOS

• Domestic (U.S.) Shipment Only

Tiger-Lily Ladd P-Red-ET

69405976 *B/R *TV *TL *TY
PTA -48M +30F +29P 76%R 4/14
PTA +3.20T +2.80UDC +2.23FLC
GTPI +2170G

Palmyra M-O-M Manhattan-ET

68681114 Very Good-85
2-04 2x 365d 32440 4.2 1377 3.5 1124

Braedale Goldwyn

CAN 10705608 GP-CAN EX'05 *TV *TL
PTA -9M +31F +13P 99%R 4/14
PTA +2.80T +2.45UDC +2.36FLC
GTPI +1879G

KHW Regiment Apple-Red-ET

135511521 Excellent-96 3E DOM
GTPI+1956 +3.63T +3.27UDC +4.06FLC
4-01 2x 365d 35750 4.7 1682 3.7 1314
7-00 2x 365d 33280 5.0 1654 3.6 1191
5-03 2x 365d 30810 5.0 1527 3.9 1212
2-02 2x 365d 28930 4.5 1297 3.6 1033
Life: 1972d 158680 4.8 7683 3.8 6034

APPLE!

- Reserve Grand Ch, Int'l R&W Show 2013
- 1st 125,000 lb. cow, Grand Int'l R&W 2013
- Grand Ch, Grand Int'l R&W Show 2011
- Unanimous All-American Jr 2-Yr-Old 2006
- All-American R&W Jr 2-Yr-Old 2006
- HHM All-American Jr 3-Yr-Old 2007
- Nom All-American R&W 5-Yr-Old 2009
- Res Grand Ch, Royal Winter R&W 2009
- HI World Champion R&W Cow 2010
- \$1,000,000 Sale Topper Global Glamour 2008

3rd thru 8th Dams

Kamps-Hollow Altitude-ET

EX-95 EEEEE 2E DOM
2-00 2x 305d 24510 3.8 922 3.7 904
7-00 2x 305d 34450 4.5 1562 3.4 1163

- Dam to proven bulls Advent, Jotan & Acme
- Red Impact Cow of the Year 2009

Clover-Mist Alisha-ET *RC EX-93 3E DOM

8-07 2x 365d 36920 4.2 1553 3.4 1258
Life: 2999d 226470 4.7 10659 3.6 8149

Clover-Mist Augy Star-ET *RC

EX-94 4E DOM
7-10 3x 365d 43140 5.0 2136 3.3 1421
Life: 2486d 206250 4.7 9793 3.5 7187

D-R-A August EX-96 EEEE 4E DOM

8-05 2x 365d 27460 4.3 1187 3.2 871
Life: 3443d 190200 4.4 8281 3.3 4457

- Nominated All-American Aged Cow 1986

D-R-A Ideal Precious Leader EX-90 2E

7-06 2x 358d 20090 3.9 787 3.4 675

D-R-A Princess Lad Leader EX-90 3E

9-05 2x 305d 19160 4.2 809



**KINGSMILL ANNAPOLIS-ET EX-92-CAN
DAM OF LOT 39**

39

FIVE #1 EMBRYOS

• *Worldwide Export Available*

Holstein Plaza Contacts:

Steve Mower +1 240-520-5906

Jennifer Dingbaum +1 320-250-2412

Mr Apples Armani *RC

68571374 *TV *TL *TY *TD

PTA -640M +61F +18P 78%R 4/14

PTA +498NM\$ +2.8PL 2.86SCS +1.2DPR

PTA +3.37T +3.07UDC +3.18FLC 78%R

GTPI +2147G

Kingsmill Annapolis-ET

66605300 Excellent-92-CAN 92-MS

4-06 2x 207d 20055 3.6 776 3.3 619 inc.

3-03 2x 297d 20185 3.4 692 3.4 683

2-03 2x 313d 16861 3.4 571 3.3 558

Braedale Goldwyn

CAN 10705608 GP-CAN EX'05 *TV *TL

PTA -9M +31F +13P 99%R 4/14

PTA +2.80T +2.45UDC +2.36FLC

GTPI +1879G

KHW Regiment Apple-Red-ET

135511521 Excellent-96 DOM

4-01 2x 365d 35750 4.7 1682 3.7 1314

• *Grand Champion, Grand Int'l R&W Show*

Regancrest Elton Durham-ET

2250783 EX-90 GM 8/01 *TR *CV *TL

PTA -263M -33F +5P 99%R 4/14

PTA +2.45T +2.17UDC +2.07FLC

GTPI +1568G

Beatyview Aspen Annika-ET

64168812 Very Good-86-2YR

3-08 2x 365d 31050 3.7 1164 3.3 1021

2-03 2x 365d 28060 4.0 1135 3.4 941

3rd thru 7th Dams

MD-Maple-Dell J Ashley-ET EX-93 2E

4-04 2x 365d 34469 4.5 1556 3.1 1065

Ms M-M-D Nobel Aruba EX-94 2E DOM

3-05 2x 365d 34539 4.3 1479 3.3 1144

MD-Delight Storm Adeline VG-88 DOM

2-01 2x 365d 25340 4.6 1175 3.6 910

Ms Kingstead Chief Adeen-ET

EX-94 2E DOM

3-05 2x 310d 30180 4.0 1209 3.4 1020

Life: 1382d 100760 4.0 4010 3.4 3458

• *2x Member All-American Produce*

• *Nom All-American Jr 3-Yr Old*

• *Nom All-American 4-Yr Old*

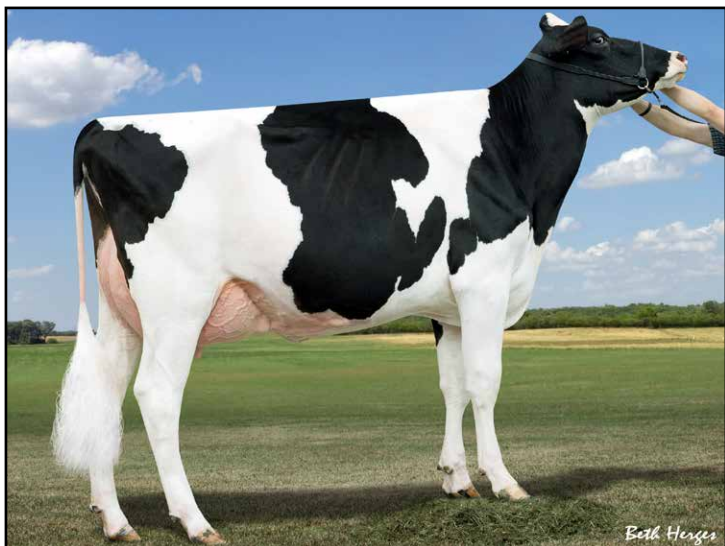
• *Dam of 16 VG and 11 EX Offspring*

C Aitkenbrae Starbuck Ada EX-94 2E DOM

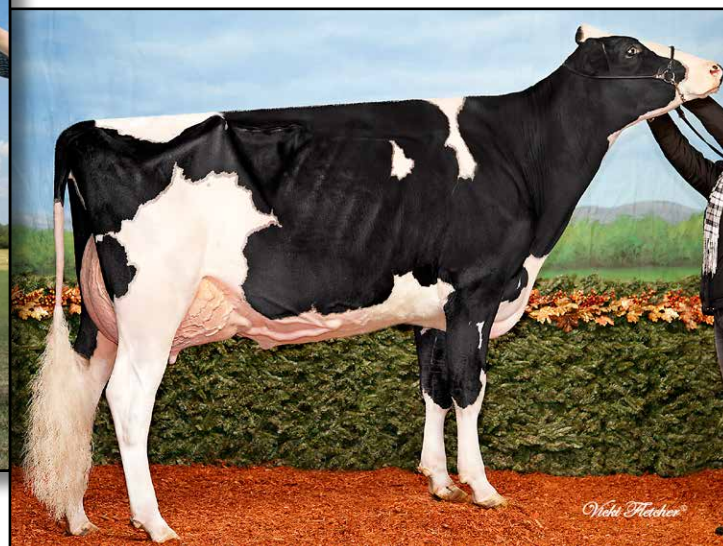
13-8 2x 365d 25150 3.0 764 3.2 796

• *All-American Produce of Dam 2000*

• *1st Eastern Nat'l 3-Yr Old & Grand Ch 1990*



BVK ATWOOD ALEX-ET VG-88 VG-MS
2ND DAM OF LOT 40



BVK ATWOOD ARIANNA VG-89-2YR EX-MS
FULL SISTER TO 2ND DAM OF LOT 40

40

FIVE #1 EMBRYOS

- Worldwide Export Available

Holstein Plaza Contacts:

Steve Mower +1 240-520-5906
Jennifer Dingbaum +1 320-250-2412

Val-Bisson Doorman

107281711C 99%RHA-I *TV *TL *TY *TD
PTA +946M +60F +50P 77%R 4/14
PTA +3.8PL 2.53SCS +0.0DPR
PTA +4.02T +3.20UDC +2.18FLC 76%R
GTPI +2370G

Prestige-Gen A S Kicker-ET

142430125 Born: March 1, 2013

Full sisters to Alex

- BVK Atwood Arianna VG-89-2YR**
- Nominated All-American Jr 2-Yr-Old 2012
- Unanimous All-Canadian Jr 2-Yr-Old 2012
- 1st Jr 2-Year-Old, Int'l Holstein Show 2012
- 1st Jr 2-Year-Old, Canadian Nat'l Show 2012
- Nom All-American Spring Yearling 2011
- BVK Atwood Abrianna EX-92 (max)**
- 2nd Junior 3 Year Old, Best B&O WDE 2013
- Grand Champion, Illinois State Fair 2013
- Grand Champion, Illinois Championship 2013
- High seller \$49,000, Impact of Ada Sale

De-Su 521 Bookem-ET

66636657 *TR *TV *TL *TY *TD
PTA +1585M +49F +61P 99%R 4/14
PTA +2.62T +2.14UDC +1.64FLC 97%R
GTPI +2279G

Val-Bisson Shottle Imelda

106173432 Very Good-85-2YR-CAN
1-11 2x 335d 23783 4.1 985 3.7 8826

Golden-Oaks St Alexander

61133837 *TR *TV *TL *TY *TD
PTA +477M +71F +13P 99%R 4/14
PTA +2.05T +1.39UDC +1.81FLC
GTPI +1718G

BVK Atwood Alex-ET

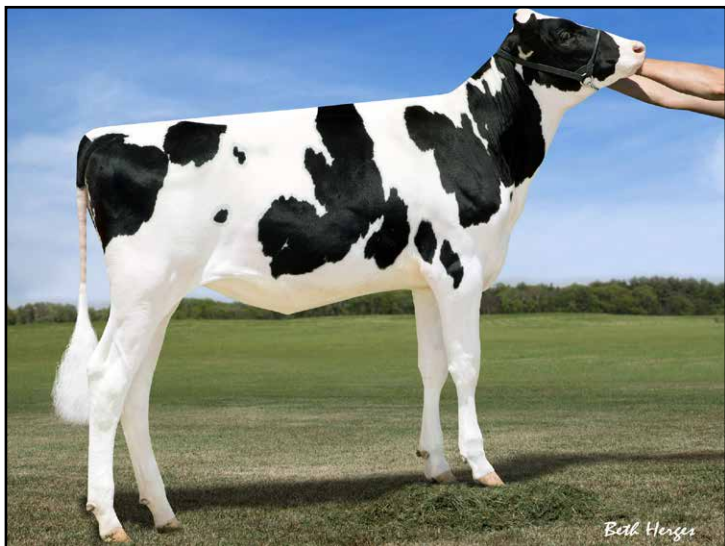
70476954 Very Good-88 VG-MS @ 2-03
GTPI+1773 +4.12T +3.19UDC +2.82FLC

3rd & 4th Dams

Ms Kingstead Chief Adeen-ET

EX-94 EEEEE 2E DOM
3-05 2x 310d 30180 4.0 1209 3.4 1020
Life: 1382d 100760 4.0 4010 3.4 3458

- 2x Member All-American Produce
- Nom All-American Jr 3-Yr Old
- Nom All-American 4-Yr Old
- Dam of 16 VG and 11 EX Offspring
- C Aitkenbrae Starbuck Ada EX-94 2E DOM**
- 13-8 2x 365d 25150 3.0 764 3.2 796
- All-American Produce of Dam 2000
- 1st Eastern Nat'l 3-Yr Old & Grand Ch 1990



FARNEAR-TBR-BH VALOUR-ET
DAM OF LOT 41



VISION-GEN SH SHO A12037-ET VG-87 VG-MS @ 2-09
2ND DAM OF LOT 41

41

FOUR #1 EMBRYOS

- Worldwide Export Available

Holstein Plaza Contacts:

Steve Mower +1 240-520-5906

Jennifer Dingbaum +1 320-250-2412

Richmond-FD El Bombero-ET

71637328 *TR *TV *TL *TY *TD

PTA +1988M +93F +58P 73%R 4/14

PTA +6.8PL 2.54SCS +0.9DPR

PTA +3.30T +2.68UDC +2.29FLC 73%R

GTPI +2558G

Farnear-TBR-BH Valour-ET

71290939 Born: December 1, 2012

GTPI+2309 +1738M +69F +60P +2.81T

Maternal sisters to Valour

Farnear-TBR-BH Vickie-ET GTPI+2433

• Sold for \$121,000 Farnear Sale 2013

Farnear-TBR-BH Varsity-ET GTPI+2380

Amighetti Numero Uno-ET

ITA 17990915143 *TV *TL *TY

PTA +740M +80F +37P 78%R 4/14

PTA +2.93T +2.82UDC +1.96FLC 77%R

GTPI +2423G

Richmond-FD S Barbara-ET

69305043 Very Good-87-2YR

2-04 3x 233d 21759 3.9 849 2.8 608 inc.

Seagull-Bay Supersire-ET

69981349 *TV *TL *TY *TD

PTA +2434M +111F +78P 76%R 4/14

PTA +2.40T +1.71UDC +1.28FLC 76%R

GTPI +2420G

Vision-Gen Sh Sho A12037-ET

69517373 Very Good-87 VG-MS @ 2-09

GTPI+2148 +1048M +44F +33P +3.33T

2-02 2x 327d 28300 3.7 1045 3.4 969

• Numerous daughters over +2300 GTPI!

3rd thru 5th Dams

KY-Blue GW Dana-ET EX-91 EX-MS

4-01 2x 185d 16881 4.5 765 3.2 540

BVK Outside Diana-ET EX-92 2E DOM

5-01 2x 365d 31920 3.5 1129 3.2 1034

Life: 1544d 107400 3.5 3708 3.3 3549

Ms Kingstead Chief Adeen-ET

EX-94 2E DOM

3-05 2x 310d 30180 4.0 1209 3.4 1020

Life: 1382d 100760 4.0 4010 3.4 3458

• 2x Member All-American Produce

• Nom All-American Jr 3-Yr Old

• Nom All-American 4-Yr Old

• Dam of 16 VG and 11 EX Offspring

C Aitkenbrae Starbuck Ada EX-94 2E DOM

13-8 2x 365d 25150 3.0 764 3.2 796

2-05 2x 362d 25000 3.6 908 3.2 798

• All-American Produce of Dam 2000

• 1st Eastern Nat'l 3-Yr Old & Grand Ch 1990



FARNEAR-TBR-BH GORGEOUS-ET
DAM OF LOT 42



B-ENTERPRISE SUPER GIGI-ET VG-86 VG-MS
2ND DAM OF LOT 42

42

SIX #1 EMBRYOS

• Worldwide Export Available

Holstein Plaza Contacts:

Steve Mower +1 240-520-5906

Jennifer Dingbaum +1 320-250-2412

Clear-Echo Lexor Racer-ET

71974211 *TV *TL *TY

PTA +1604M +69F +64P 73%R 4/14

PTA +874NM\$ +6.0PL 2.57SCS +1.7DPR

PTA +2.83T +2.82UDC +1.96FLC 73%R

GTPI +2482G / gRZG+157

Farnear-TBR-BH Gorgeous-ET

71290950 Born: November 5, 2012

GTPI+2418 +2600M +103F +82P +2.60T

• Sold for \$94,000 Farnear Focus on the Future

Maternal sister to Gorgeous

Farnear-TBR-BH Georgia-ET

GTPI+2441 +1453M +55F +53P +3.53T

• Sold for \$98,000 Farnear Focus on the Future

Generations Lexor

11098658C *TV *TL

PTA +1308M +86F +68P 77%R 4/14

PTA +2.50T +1.70UDC +2.18FLC 77%R

GTPI +2281G

Clear-Echo Observer 2280-ET

68669880 Good Plus-84

2-01 3x 280d 22539 3.7 823 3.1 695

Seagull-Bay Supersire-ET

69981349 *TV *TL *TY *TD

PTA +2434M +111F +78P 76%R 4/14

PTA +2.40T +1.71UDC +1.28FLC 76%R

GTPI +2420G

B-Enterprise Super Gigi-ET

69386235 Very Good-86 VG-MS @ 2-05

GTPI+2249 +2074M +37F +53P +3.21T

2-03 2x 124d 13659 3.5 480 3.1 419 inc.

3rd thru 8th Dams

Brigeen Outside Gigi EX-90 2E GMD DOM

5-08 2x 365d 60160 4.2 2522 2.9 1766

Life: 1578d 167080 4.0 6600 3.0 4949

Brigeen Aer Gwyneth EX-93 2E GMD DOM

6-05 2x 365d 48150 3.3 1567 2.8 1371

Life: 2094d 219870 3.3 7288 2.9 6372

Brigeen Integrity Gwen VG-86 GMD

3-07 2x 365d 39520 3.8 1518 2.8 1102

Life: 1478d 122980 3.6 4368 2.9 3536

Roylane Leadman Glory VG-89 GMD DOM

2-00 2x 365d 30880 3.6 1127 3.1 952

Western-Cascade Mark Bella

EX-91 GMD DOM

3-06 2x 365d 36360 3.7 1354 3.0 1041

Western-Cascade Bell Glory

EX-90 2E GMD DOM

7-10 2x 305d 34830 3.3 1155 3.0 1037

Life: 1525d 139210 3.6 5018 3.1 4295

TERMS and CONDITIONS

GENERAL:

- These terms are valid for all agreements made through this sale.
- The organization of the sale is done by Holstein Plaza, part of AMS Genetics International LLC.
- The party, which offers embryos in this sale will be named after this as the “seller” and the party who buys through this sale and gets the sale item assigned, will be hereinafter identified as the “buyer”.
- The organization will only act as an intermediary in the realization from a (purchase) agreement between seller and buyer.

HOW DOES THE SALE WORK:

- All embryos sell with reasonable starting bid.
- The bid price is the per embryo price. If a lot has four embryos and the price is \$500.00 that means the lot price is \$2,000.00.
- When you place a bid, you agree to pay for the item if you're the winning bidder.
- All embryos are froze DT unless otherwise noted in catalog.
- All embryos are available for immediate shipment unless otherwise noted in catalog.
- There are two ways of placing a bid: internet (www.holstein-plaza.com) or via one of the listed Holstein Plaza contact persons.
- The bids are made in US dollars.
- When you place a bid, you enter the maximum amount you're willing to pay for the item. The other bidders and the sale organization will not be able to see your maximum bid. Through this Proxy bidding system, the Holstein Plaza auction system will increase your bid to the next lowest price when another user bids on the same item. The proxy bidding process continues until your maximum bid amount is reached or the auction ends. Every bidder is bound to his bid.
- The sale is using the popcorn bid system/5-minute rule ([click here for more information on the popcorn bid system/5-minute rule](#)). Until that moment bids will be accepted.
- All risks of the embryos are the responsibility of the buyer once the embryos are delivered to the buyer.
- The transportation of embryos from the seller to the buyer will take place as soon as possible after the sale, but not before complete payment as invoiced from AMS Genetics is received from the successful buyer.
- AMS Genetics will coordinate the paperwork and transfers with Holstein.

PAYMENT:

- Payment for all purchases is due within ten days of sale.
- Sale invoices will be sent via e-mail or fax following the conclusion of the sale.
- Embryo release forms are issued once proper payment has been received and processed by AMS Genetics.
- Payment will not be released to the seller until AMS Genetics has received proper transfer paperwork.
- Holstein Plaza charges a buyer's commission of \$50 per embryo to include all necessary paperwork; note, this fee does not include shipping.
- International buyers are responsible for shipping the embryos. Buyers will be contacted after the sale about their wishes and requirements for exporting the embryos.
- All embryos needing international shipment will be charged a flat fee of \$150 per lot for export documentation.
- AMS Genetics can handle export and shipping. In case export is being done through AMS Genetics an additional \$50 export fee per embryo will be charged. This flat fee does not cover transport. Buyer should arrange shipping within 60 days of the ending sale date.

EXCLUDING LIABILITY:

- The organization cannot be held responsible for errors on the internet site, sale catalog or in the advertisements.
- The organization cannot be held responsible for visual or non visual regardless the size or nature of such defect of the sold item.
- The organization does not take any responsibility for damage to persons or cases, which has arisen because of or connected to the sale.
- The cow indexes mentioned therein have been calculated or converted by the herdbook in the country the donor cow is housed in accordance with the current methods. All official pedigrees of sale animals can be seen.
- All frozen embryos are rated first class by official and registered ET veterinarians unless stated different on the website. In case embryos sold as first class after thawing turn out as class two or lower and not end in a pregnancy, the seller will be responsible for a refund, either in the form of an embryo with similar pedigree value or the purchase amount for the embryo. It is of vital importance that any claim is accompanied with an official statement in English from a recognized ET veterinarian. This should be sent to Holstein Plaza.
- Every bidder and seller is held to conform to the auction conditions. The act of bidding and consigning implicates knowledge and acceptance of these conditions.
- The organization can never be held responsible in case the embryos cannot be exported no matter what reason.