



ROSEDALE LEXINGTON EX-94 EEEEE  
DAM OF LOT 1



ROSEDALE LEXINGTON EX-94 EEEEE  
DAM OF LOT 1

1

## THREE #1 EMBRYOS

• Worldwide Export Available

### Holstein Plaza Contacts:

Steve Mower +1 240-520-5906

Jennifer Dingbaum +1 320-250-2412

### Gillette Windbrook

7816429C 91%RHA-NA \*TV \*TL \*TY \*TD  
PTA +854M +52F +30P 92%R 12/13  
PTA +300NM\$ +0.3PL 2.94SCS -1.9DPR  
PTA +2.75T +2.10UDC +2.59FLC  
GTPI +1880

### Rosedale Lexington-ET

139462007 Excellent-94 EEEEE  
3-01 2x 365d 23730 5.1 1221 3.7 873  
2-01 2x 317d 21830 4.6 998 3.2 710  
• All-American Five-Year-Old 2013  
• 1st 5-Yr-old World Dairy Expo 2013  
• Reserve All-American Junior 3-Yr-Old 2011  
• HM Intermediate Champ, WDE 2011  
• Reserve All-American Junior 2-Yr-Old 2010

### Gillette Brilea F B I-ET

89524C EX-94-CAN EXTRA'05 \*TV \*TL  
PTA +1451M +38F +34P 99%R 12/13  
PTA +1.87T +1.26UDC +1.50FLC  
GTPI +1752G

### Gillette Blitz 2nd Wind-ET

7352248C VG-88-CAN 34\*  
2-02 3x 365d 39096 3.6 1422 3.0 1182

### Braedale Goldwyn

CAN 10705608 GP-CAN EX'05 \*TV \*TL  
PTA -45M +29F +12P 99%R 12/13  
PTA +2.82T +2.47UDC +2.36FLC  
GTPI +1876G

### Rosedale Lexi-ET

135177644 Very Good-89 EX-MS @ 3-01  
2-02 2x 365d 26800 5.1 1356 2.9 787  
• Res Int Champ, Midwest Spring Nat'l 2007  
• All-Wisconsin Jr 2-Yr-Old Cow 2006  
• 6th Jr 2-Yr-Old, Grand International 2006  
• HM All-American Spring Yrlg Heifer 2005

### 3rd thru 7th Dams

**Rosedale Lea-Ann-ET** EX-93 2E GMD  
4-08 3x 365d 39370 3.4 1325 3.1 1202  
**Stookey Elm Park Blackrose-ET**  
EX-96 3E GMD DOM  
7-03 3x 365d 41960 4.3 1796 3.1 1285  
Life: 1609d 149880 4.4 6621 3.3 4940  
• AA & All-Canadian Jr 2-Yr Old 1992  
• AA & All-Canadian Jr 3-Yr Old 1993  
• Reserve All-American 5-Yr Old 1995  
• Reserve All-American Aged Cow 1997  
**Nandette TT Speckle-Red** EX-93 DOM  
4-08 2x 365d 25290 4.7 1195  
• All-American R&W 2-Year Old, 1981  
• All-American R&W Aged Cow, 1984  
**Nandette Riley Nana-Red** VG-87  
7-01 2x 365d 20070 3.4 677 3.1 621  
**Nandette Bootmake Gale** VG-89  
5-07 2x 305d 22300 4.0 896  
Life: 2181d 129410 3.8 4916



**COMESTAR LAUTAMAI MAN O MAN VG-87-2YR  
DAM OF LOT 2**



**COMESTAR LAUTAMA GOLDWYN VG-88  
2ND DAM OF LOT 2**

2

## THREE #1 EMBRYOS

- Worldwide Export Available

### Holstein Plaza Contacts:

Steve Mower +1 240-520-5906

Jennifer Dingbaum +1 320-250-2412

### Delaberge Pepper

11591480 \*TV \*TL \*TD  
PTA +1114M +71F +53P 73%R 12/13  
PTA +839M\$ +6.5PL 2.64SCS +1.3DPR  
PTA +2.97T +3.26UDC ++1.50FLC 72%R  
GTPI +2451G / gRZG+152 / GPA-LPI+3255

### Comestar Lautamai Man O Man

106676836C Very Good-87-2YR-CAN  
GTPI +2211 +1534M +56F +67P +2.41T  
GLPI+3382 / Conf+12  
2-01 2x 365d 40340 4.2 1684 3.4 1371  
• #4 GLPI Cow in Canada (12/13)  
• Several daughters testing GPA-LPI>3000

### Mountfield SSI Dcy Mogul

3006972816 \*TV \*TL \*TY \*TD  
PTA +1226M +73F +44P 77%R 12/13  
PTA +2.84T +2.97UDC +2.79FLC 77%R  
GTPI+2350G

### Delaberge Planet Louisa

105841581 Very Good-88-4YR VG-MS  
2-00 2x 365d 33115 4.1 1364 3.1 1104  
• 1 Superior Lactation

### Long-Langs Oman Oman-ET

135746776 VG-85 GM 8/12 \*TV \*TL \*TY  
PTA +1106M +69F +63P 99%R 12/13  
PTA +2.09T +1.76UDC +1.72FLC  
GTPI +2189G

### Comestar Lautama Goldwyn

103974968 Very Good-88 2YR-CAN  
6-04 2x 365d 46722 4.6 2167 3.3 1521  
2-06 2x 365d 42079 4.8 2000 3.6 1523

### 3rd thru 8th Dams

#### Comestar Lautamie Titanic-ET

VG-89-2YR-CAN 23\*  
4-05 2x 365d 46572 4.5 2110 3.4 1594  
• Res All-Canadian Jr 2-Year-Old 2006  
• All-Quebeca Jr 2-Year-Old 2006  
• 3rd 5-Year-Old, Quebec Spring 2009

#### Comestar Lautelma Igniter VG-89 19\*

4-02 2x 365d 49804 4.7 2343 3.5 1728  
Life (2 Lacs): 113927 4.5 5115 3.6 4083

#### Comestar Lautelle Emerson-ET

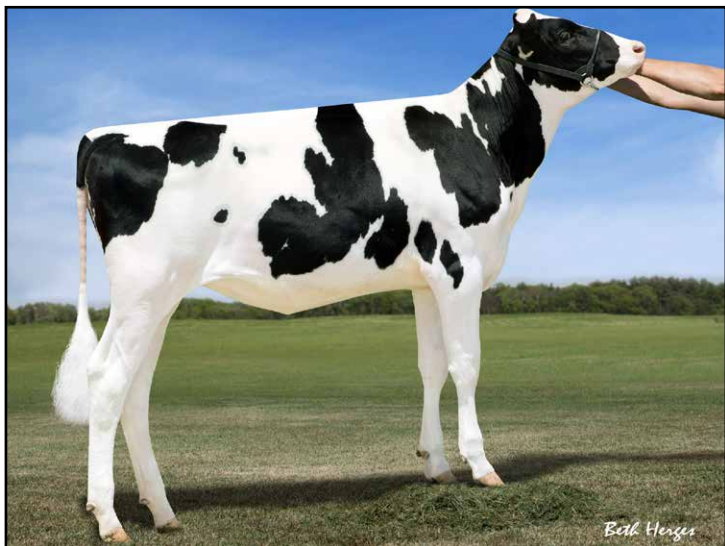
VG-85-CAN 2\*  
2-02 2x 365d 30298 4.0 1197 3.6 1093

#### Comestar Lausan Black-ET VG-87-CAN 23\*

5-04 2x 365d 37039 4.3 1587 3.6 1318  
Life: 1818d 108246 4.4 4735 3.8 4151

#### Comestar Laurie Sheik-ET VG-88-CAN 23\*

6-09 2x 365d 29864 4.5 1329 3.4 1016  
Life (4 Lacs): 106564 4.5 4780 3.6 3885  
• HM All-Canadian Sr 2 Yr Old Cow 1989  
• HM All-American Sr 2 Yr Old Cow 1989  
**Elysa Anthony Lea** EX-CAN 15\*  
6-02 2x 365d 35770 3.9 1398 2.9 1049  
Life (3 Lacs): 109580 4.0 4334 3.1 3439



**FARNEAR-TBR-BH VALOUR-ET**  
DAM OF LOT 3



**VISION-GEN SH SHO A12037-ET VG-87 VG-MS @ 2-09**  
2ND DAM OF LOT 3

3

## FOUR #1 EMBRYOS

- Worldwide Export Available

### Holstein Plaza Contacts:

Steve Mower +1 240-520-5906

Jennifer Dingbaum +1 320-250-2412

### Richmond-FD El Bombero-ET

71637328 \*TY

PTA +1925M +92F +58P 73%R 12/13

PTA +6.8PL 2.53SCS +0.5DPR

PTA +3.18T +2.69UDC +2.31FLC 72%R

GTPI +2532G

### Farnear-TBR-BH Valour-ET

71290939

Born: December 1, 2012

GTPI+2321 +1745M +72F +61P +2.70T

### Maternal sisters to Valour

**Farnear-TBR-BH Vickie-ET** GTPI+2442

• Sold for \$121,000 Farnear Sale 2013

**Farnear-TBR-BH Varsity-ET** GTPI+2364

### Amighetti Numero Uno-ET

ITA 17990915143 \*TV \*TL \*TY

PTA +858M +80F +39P 77%R 12/13

PTA +2.88T +2.84UDC +1.93FLC 77%R

GTPI +2435G

### Richmond-FD S Barbara-ET

69305043 Very Good-87-2YR

### Seagull-Bay Supersire-ET

69981349 \*TV \*TL \*TY \*TD

PTA +2342M +107F +75P 76%R 12/13

PTA +2.38T +1.66UDC +1.22FLC 75%R

GTPI +2413G

### Vision-Gen Sh Sho A12037-ET

69517373 Very Good-87 VG-MS @ 2-09

GTPI+2181 +1148M +49F +36P +3.39T

2-02 2x 327d 28300 3.7 1045 3.4 969

• Numerous daughters over +2300 GTPI!

### 3rd thru 5th Dams

**KY-Blue GW Dana-ET** EX-91 EX-MS

4-01 2x 185d 16881 4.5 765 3.2 540

**BVK Outside Diana-ET** EX-92 2E DOM

5-01 2x 365d 31920 3.5 1129 3.2 1034

Life: 1544d 107400 3.5 3708 3.3 3549

**Ms Kingstead Chief Adeen-ET**

EX-94 2E DOM

3-05 2x 310d 30180 4.0 1209 3.4 1020

Life: 1382d 100760 4.0 4010 3.4 3458

• 2x Member All-American Produce

• Nom All-American Jr 3-Yr Old

• Nom All-American 4-Yr Old

• Dam of 16 VG and 11 EX Offspring

**C Aitkenbrae Starbuck Ada** EX-94 2E DOM

13-8 2x 365d 25150 3.0 764 3.2 796

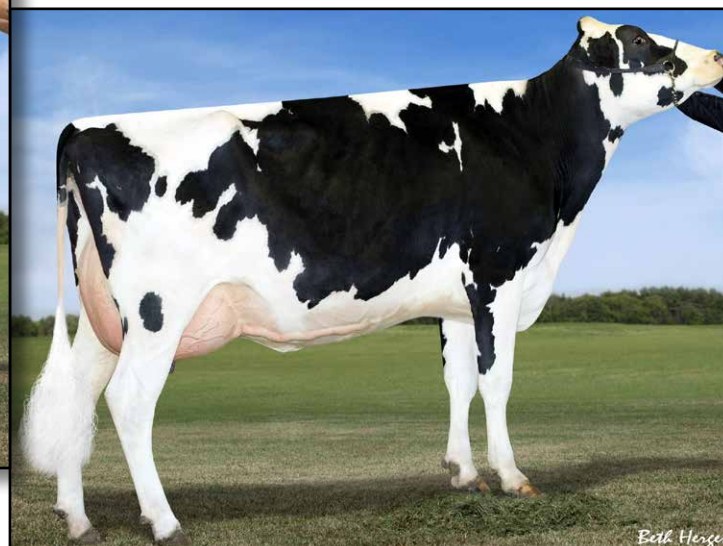
2-05 2x 362d 25000 3.6 908 3.2 798

• All-American Produce of Dam 2000

• 1st Eastern Nat'l 3-Yr Old & Grand Ch 1990



**FARNEAR-TBR-BH GORGEOUS-ET**  
DAM OF LOT 4



**B-ENTERPRISE SUPER GIGI-ET VG-86 VG-MS**  
2ND DAM OF LOT 4

4

## FIVE #1 EMBRYOS

• *Worldwide Export Available*

### Holstein Plaza Contacts:

Steve Mower +1 240-520-5906

Jennifer Dingbaum +1 320-250-2412

### Clear-Echo Lexor Racer-ET

71974211 \*TV \*TL \*TY

PTA +1446M +64F +59P 73%R 12/13

PTA +860NM\$ +6.0PL 2.57SCS +2.0DPR

PTA +2.86T +2.89UDC +2.00FLC 72%R

GTPI +2482G / gRZG+160

### Farnear-TBR-BH Gorgeous-ET

71290950

Born: November 5, 2012

GTPI+2368 +2503M +98F +79P +2.59T

• Sold for \$94,000 *Farnear Focus on the Future*

*Maternal sister to Gorgeous*

### Farnear-TBR-BH Georgia-ET

GTPI+2465 +1510M +57F +56P +3.63T

• Sold for \$98,000 *Farnear Focus on the Future*

### Generations Lexor

11098658C \*TV \*TL

PTA +1237M +78F +65P 77%R 12/13

PTA +2.57T +1.76UDC +2.30FLC

GTPI +2256G

### Clear-Echo Observer 2280-ET

68669880 Good Plus-84

2-01 3x 280d 22539 3.7 823 3.1 695

### Seagull-Bay Supersire-ET

69981349 \*TV \*TL \*TY \*TD

PTA +2342M +107F +75P 76%R 12/13

PTA +2.38T +1.66UDC +1.22FLC 75%R

GTPI +2413G

### B-Enterprise Super Gigi-ET

69386235 Very Good-86 VG-MS @ 2-05

GTPI+2221 +2100M +38F +54P +3.07T

2-03 2x 124d 13659 3.5 480 3.1 419 inc.

### 3rd thru 8th Dams

**Brigeen Outside Gigi** EX-90 2E GMD DOM

5-08 2x 365d 60160 4.2 2522 2.9 1766

Life: 1578d 167080 4.0 6600 3.0 4949

**Brigeen Aer Gwyneth** EX-93 2E GMD DOM

6-05 2x 365d 48150 3.3 1567 2.8 1371

Life: 2094d 219870 3.3 7288 2.9 6372

**Brigeen Integrity Gwen** VG-86 GMD

3-07 2x 365d 39520 3.8 1518 2.8 1102

Life: 1478d 122980 3.6 4368 2.9 3536

**Roylane Leadman Glory** VG-89 GMD DOM

2-00 2x 365d 30880 3.6 1127 3.1 952

**Western-Cascade Mark Bella**

EX-91 GMD DOM

3-06 2x 365d 36360 3.7 1354 3.0 1041

**Western-Cascade Bell Glory**

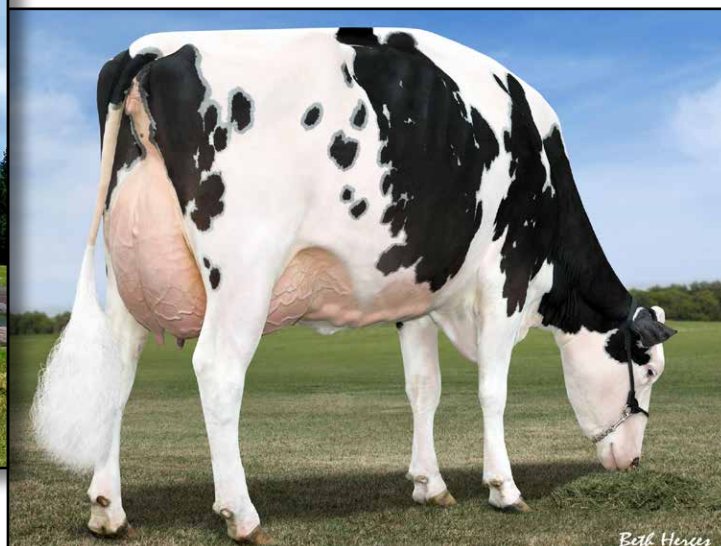
EX-90 2E GMD DOM

7-10 2x 305d 34830 3.3 1155 3.0 1037

Life: 1525d 139210 3.6 5018 3.1 4295



**ALLYNDALE-I SANCHEZ ANGELICA VG-88**  
DAM OF LOT 5



**MS ATLEES SHOTTLE AUBRY EX-92**  
2ND DAM OF LOT 5

5

## THREE #1 IVF EMBRYOS

- Eligible for shipment in Canada and export to the U.S., EU and China

### Holstein Plaza Contacts:

Steve Mower +1 240-520-5906  
Jennifer Dingbaum +1 320-250-2412

### Braedale Goldwyn

CAN 10705608 GP-CAN EX'05 \*TV \*TL  
PTA -45M +29F +12P 99%R 12/13  
PTA +311NM\$ +0.9PL 2.66SCS -0.1DPR  
PTA +2.82T +2.47UDC +2.36FLC  
GTPI +1876G

### Allyndale-I Sanchez Angelica

9784602 Very Good-88-3YR-CAN 88-MS  
GLPI+2265 +15Conf.  
3-00 2x 264d 20998 3.5 732 3.1 628 inc.  
1-11 2x 337d 24090 3.5 831 3.1 743  
• Her Goldwyn daughter sold for \$25,000 in  
the Island Heat Wave Summer Sale 2013  
• Dam is full sister to Aftershock and  
maternal sister to Atwood

### Shoremar James

5902195C GP-81-CAN GM 2/04 \*TV \*TL  
PTA -645M +6F +4P 99%R 12/13  
PTA +.64T +.62UDC +.21FLC  
GTPI +1226G

### Braedale Baler Twine

6860888C Very Good-86-CAN 29\*  
2-01 2x 365d 30906 4.9 1521 3.4 1052

### Gen-Mark Stmatic Sanchez

134422312 \*TR \*TV \*TL \*TY \*TD  
PTA +976M +1F +23P 99%R 12/13  
PTA +3.01T +2.01UDC +2.56FLC 99%R  
GTPI +1690G

### Ms Atlees Shottle Aubry-ET

65249841 Excellent-92 EX-93-MS DOM  
GTPI+1972 +2.98T +2.59UDC +2.67FLC  
2-03 2x 365d 31140 3.7 1148 3.2 1003  
• Only Shottle from Atlee  
• Full sister to AFTERSHOCK

### 3rd thru 6th Dams

#### MD-Delight Durham Atlee-ET EX-92 EEEEE DOM

3-11 2x 365d 38290 5.5 2091 3.3 1249  
• All-American Sr 3-Yr-Old Cow 2005  
• Res Int Champ, International Show 2005

#### MD-Delight Strm Amberlee-ET VG-88 DOM

2-02 2x 365d 26170 3.7 969 3.2 835

#### Ms Kingstead Chief Adeen-ET EX-94 2E DOM

3-05 2x 310d 30180 4.0 1209 3.4 1020  
Life: 1382d 100760 4.0 4010 3.4 3458

- 2x Member All-American Produce
  - Nom All-American Jr 3-Yr Old
  - Nom All-American 4-Yr Old
  - Dam of 16 VG and 11 EX Offspring
- #### C Aitkenbrae Starbuck Ada EX-94 2E DOM
- 13-8 2x 365d 25150 3.0 764 3.2 796  
2-05 2x 362d 25000 3.6 908 3.2 798  
• All-American Produce of Dam 2000  
• 1st Eastern Nat'l 3-Yr Old & Grand Ch 1990v



**MS LICORICE LISTERINE-ET**  
DAM OF LOT 6



**ROCKYMOUNTAIN TALENT LICORICE EX-95**  
2ND DAM OF LOT 6



## FOUR #1 EMBRYOS

• Worldwide Export Available

### Holstein Plaza Contacts:

Steve Mower +1 240-520-5906

Jennifer Dingbaum +1 320-250-2412



### Maple-Downs-I G W Atwood-ET (SEXED)

8956379C Very Good-87 \*TV \*TL \*TY \*TD  
PTA +261M +48F +12P 99%R 12/13  
PTA +213NM\$ +0.9PL 2.94SCS -2.2DPR  
PTA +4.66T +3.47UDC +3.85FLC 99%R  
GTPI +1932G

### Ms Licorice Listerine-ET

72127299 Born: October 27, 2012  
GTPI+2007 +806M +56F +36P +2.40T

### Braedale Goldwyn

CAN 10705608 GP-CAN EX'05 \*TV \*TL  
PTA -45M +29F +12P 99%R 12/13  
PTA +2.82T +2.47UDC +2.36FLC  
GTPI +1876G

### MD-Delight Durham Atlee-ET

131704103 Excellent-92 EEEEE DOM  
3-11 2x 365d 38290 5.5 2091 3.1 1177  
• All-American Senior 3-Year-Old 2005

### Amighetti Numero Uno-ET

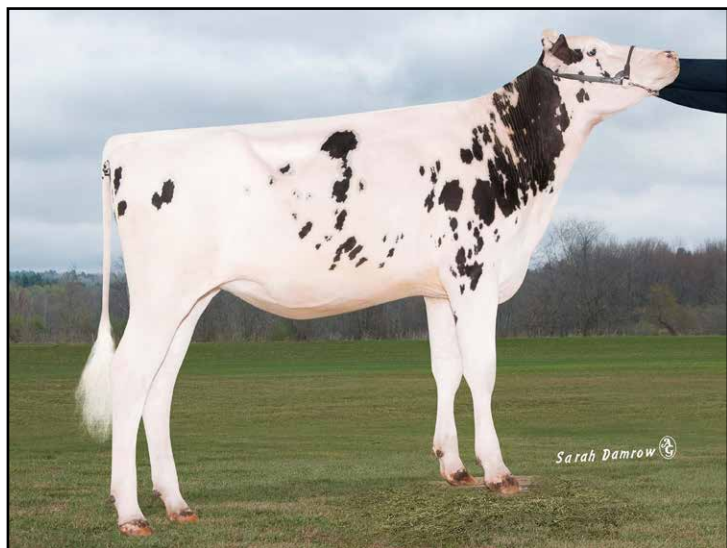
ITA 17990915143 \*TV \*TL \*TY  
PTA +858M +80F +39P 77%R 12/13  
PTA +2.88T +2.84UDC +1.93FLC 77%R  
GTPI +2435G

### Rockymountain Talent Licorice

7990215C Excellent-95 @ 5YR 1\*  
2-03 2x 305d 23682 3.3 785 3.3 785  
3-10 2x 305d 32901 4.0 1310 3.4 1102  
• All Canadian 4-Year-Old & Sr 3-Year-Old  
• Int. Champion, Royal Winter Fair 2010  
• Int. Champ, Quebec International 2010  
• Res. Grand Ch, Quebec International 2010  
• HM Grand Ch, Royal Winter Fair 201

### 3rd thru 5th Dams

**Idee Rudolph Liberty** VG-89-3YR 2\*  
5-11 2x 305d 30181 3.4 1021 3.2 968  
**Idee Skychief Layota** VG-88-7YR 8\*  
5-07 2x 305d 28195 4.1 1155 3.2 893  
**Ravenswell Lydia** EX-92-3YR DOM 19\*  
5-01 2x 305d 21475 4.6 922 3.3 714  
• Lydia has 14 VG & 6 EX daughters!



**MATCREST LEXOR CHI CHI-ET**  
DAM OF LOT 7



**LARCREST CARABELLA VG-86 VG-MS DOM**  
2ND DAM OF LOT 7



## FIVE #1 EMBRYOS

- Worldwide Export Available

### Holstein Plaza Contacts:

Steve Mower +1 240-520-5906

Jennifer Dingbaum +1 320-250-2412

### De-Su 11236 Balisto-ET

70625988 \*TV \*TL \*TY \*TD

PTA +1725M +96F +78P 76%R 12/13

PTA +813NM\$ +4.3PL 2.7SCS -0.8DPR

PTA +2.72T +1.92UDC +2.26FLC 75%R

GTPI +2424G / gRZG+166

### Matcrest Lexor Chi Chi-ET

71741717

Born: October 30, 2012

GTPI+2282 +1277M +42F +52P +2.97T

gRZG+145

### De-Su 521 Bookem-ET

66636657 \*TR \*TV \*TL \*TY \*TD

PTA +1452M +44F +54P 98%R 12/13

PTA +2.79T +2.27UDC +1.72FLC 95%R

GTPI +2257G

### De-Su 199-ET

69490353 VG-85 VG-MS @ 3-03

### Generations Lexor

11098658C \*TV \*TL

PTA +1237M +78F +65P 77%R 12/13

PTA +2.57T +1.76UDC +2.30FLC

GTPI +2256G

### Larcrest Carabella-ET

53766355 Very Good-86 VG-MS DOM

GTPI+2062 +371M +50F +14P +2.64T

2-05 2x 365d 29339 4.4 1284 3.2 927

Full sister to Carabella

### Larcrest Cosmopolitan

VG-87 GMD DOM

2-04 2x 365d 30930 4.1 1261 3.6 1119

### 3rd thru 5th Dams

#### Larcrest Oside Champagne-TW

EX-90 GMD DOM

2-03 2x 365d 29110 4.5 1322 3.7 1077

• 17 sons in A.I. worldwide

#### Larcrest Juror Chanel EX-93 3E GMD DOM

9-00 2x 365d 48460 4.0 1943 3.4 1648

Life: 2899d 245420 4.3 10482 3.6 8866

#### Larcrest Lindy Chandra VG-85

2-05 2x 365d 20896 4.8 993 3.8 803

#### Larcrest Inspiration Carly VG-87

3-05 2x 305d 21800 4.5 973 3.3 802



**LARCREST CREDIT-ET VG-85-2YR**  
DAM OF LOT 8



**LARCREST COMET-ETS VG-87 DOM**  
2ND DAM OF LOT 8

8

**Holstein Plaza Contacts:**

Steve Mower +1 240-520-5906  
Jennifer Dingbaum +1 320-250-2412

**Richmond-FD El Bombero-ET**

71637328 \*TY  
PTA +1925M +92F +58P 73%R 12/13  
PTA +6.8PL 2.53SCS +0.5DPR  
PTA +3.18T +2.69UDC +2.31FLC 72%R  
GTPI +2532G

**Larcrest Credit-ET**

56265392 Very Good-85 @ 2-11  
GTPI+2241 +1953M +76F +58P +2.06T  
2-06 2x 181d 18774 3.7 649 3.3 615 inc.

**FIVE #1 EMBRYOS**

• *Worldwide Export Available*

**Amighetti Numero Uno-ET**

ITA 17990915143 \*TV \*TL \*TY  
PTA +858M +80F +39P 77%R 12/13  
PTA +2.88T +2.84UDC +1.93FLC 77%R  
GTPI +2435G

**Richmond-FD S Barbara-ET**

69305043 Very Good-87-2YR

**Badger-Bluff Fanny Freddie-ET**

60996956 99%RHA-NA \*TV \*TL  
PTA +1252M +53F +40P 99%R 12/13  
PTA +1.53T +1.66UDC +2.69FLC  
GTPI +2249G

**Larcrest Comet-ETS**

53766363 Very Good-87 DOM @ 3-01  
GTPI+2134 +1690M +96F +57P +2.18T  
2-02 2x 305d 28190 4.3 1205 3.3 921  
• 11 daughters over +2300G  
• Full sister to Larcrest Cancun at ABS  
• Full sister to O-Cosmopolitan

*Maternal sisters to Lot 8*

**Speek-NJ Predest Crumpet-ET**

GTPI+2573 +1003NM\$ +2.75T

**Speek-NJ-I Supersire Calypso**

GTPI+2447 +892NM\$

**Speek-NJ Predest Cutie-ET**

GTPI+2442 +871NM\$ +2.58T

*3rd thru 6th Dams*

**Larcrest Cosmopolitan VG-87 DOM**

2-04 2x 365d 30930 4.1 1261 3.6 1119

**Larcrest Oside Champagne-TW**

EX-90 GMD DOM

2-03 2x 365d 29110 4.5 1322 3.7 1077

• 17 sons in A.I. worldwide

**Larcrest Juror Chanel EX-93 3E GMD DOM**

9-00 2x 365d 48460 4.0 1943 3.4 1648

Life: 2899d 245420 4.3 10482 3.6 8866

**Larcrest Lindy Chandra VG-85**

2-05 2x 365d 20896 4.8 993 3.8 803

**Larcrest Inspiration Carly VG-87**

3-05 2x 305d 21800 4.5 973 3.3 802





LINDLAUR GABOR ANNETTE \*RC EX-90 EEVEE @ 2-10  
DAM OF LOT 9



## TWO#1 IVF FEMALE EMBRYOS

• Eligible for shipment in the U.S. and export to EU and China

### Holstein Plaza Contacts:

Steve Mower +1 240-520-5906  
Jennifer Dingbaum +1 320-250-2412

### Braedale Goldwyn

CAN 10705608 GP-CAN EX'05 \*TV \*TL  
PTA -45M +29F +12P 99%R 12/13  
PTA +311NM\$ +0.9PL 2.66SCS -0.1DPR  
PTA +2.82T +2.47UDC +2.36FLC  
GTPI +1876G

### Lindlaur Gabor Annette \*RC

65830539 Excellent-90 EEVEE @ 2-10  
GTPI+2055 +1228M +26F +35P +2.69T  
2-00 3x 229d 23520 3.2 762 2.9 692  
• 1st Mid-E Sprg Nat'l Jr 2-Yr Cow 2013  
• 2nd Mid-E Sprg Nat'l Jr 2-Yr Cow 2013

### Shoremar James

5902195C GP-81-CAN GM 2/04 \*TV \*TL  
PTA -645M +6F +4P 99%R 12/13  
PTA +.64T +.62UDC +.21FLC  
GTPI +1226G

### Braedale Baler Twine

6860888C Very Good-86-CAN 29\*  
2-01 2x 365d 30906 4.9 1521 3.4 1052

### Willow-Marsh-CC Gabor-ET

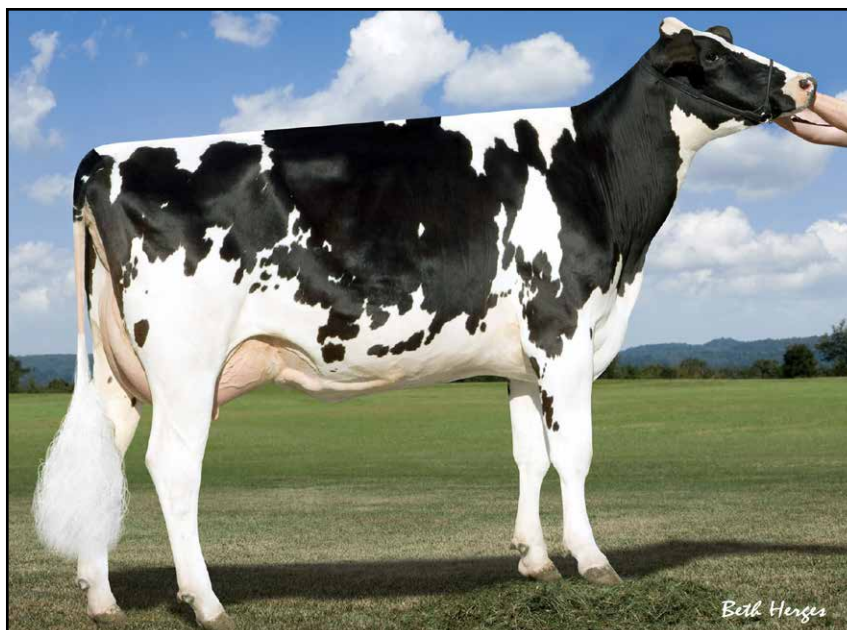
60845420 \*TR \*TV \*TL \*TY \*TD  
PTA +2348M +25F +44P 99%R 12/13  
PTA +2.50T +1.93UDC +1.20FLC 99%R  
GTPI +2086G

### Lindlaur Advent Ally

63350322 Excellent-90 EX-MS @ 3-10  
2-05 3x 294d 26170 4.1 1064 3.2 849  
3-05 3x 365d 36090 3.6 1296 3.3 1178  
4-11 3x 365d 36080 3.5 1271 3.2 1165

### 3rd thru 9th Dams

**Paradise-R Anastasia-TW** VG-88 EX-MS  
4-09 3x 365d 37580 3.5 1323 3.1 1164  
**Paradise-R Jordan Anna** VG-85  
5-00 3x 365d 36230 3.5 1091 3.2 990  
**Paradise-R Amaretto 2965**  
EX-91 EEVEE 2E  
5-02 3x 365d 34390 3.7 1263 3.3 1125  
**Shanhigh Integrity Alica** VG-86-3YR  
3-05 3x 305d 33220 3.6 1211 2.9 971  
**Shanhigh Jed Alice** EX-90  
**Shanhigh Angel Ryan 1st-TW** VG-88  
**Shanhigh Angele Libby Cynthia** EX-92



**BRIGEENS SHOTTLE GIGI EX-90 91-MS  
DAM OF LOT 10**

10

## FIVE #1 EMBRYOS

• Worldwide Export Available

### Holstein Plaza Contacts:

Steve Mower +1 240-520-5906

Jennifer Dingbaum +1 320-250-2412

### Richmond-FD El Bombero-ET

71637328 \*TY

PTA +1925M +92F +58P 73%R 12/13

PTA +6.8PL 2.53SCS +0.5DPR

PTA +3.18T +2.69UDC +2.31FLC 72%R

GTPI +2532G

### Brigeen Shottle Gigi

68763023 Excellent-90 91-MS

GTPI+1914 +1189M +40F +30P +2.18T

3-03 3x 102d 14099 4.1 583 2.8 390 inc.

1-11 3x 365d 36535 3.4 1233 2.9 1063

Maternal sister to Shottle Gigi

**B-Enterprise Super Gigi-ET VG-86 VG-MS**

GTPI+2221 +2100M +38F +54P +3.07T

• McCutchen daughter +2465G

### Amighetti Numero Uno-ET

ITA 17990915143 \*TV \*TL \*TY

PTA +858M +80F +39P 77%R 12/13

PTA +2.88T +2.84UDC +1.93FLC 77%R

GTPI +2435G

### Richmond-FD S Barbara-ET

69305043 Very Good-87-2YR

### Picston Shottle-ET

GBR 598172 EX-95 GM 12/11 \*TV \*TL \*TY

PTA +945M +47F +25P 99%R 12/13

PTA +2.32T +1.87UDC +1.60FLC

GTPI +1951G

### Brigeen Outside Gigi

63427543 Excellent-90 2E GMD DOM

2-00 2x 365d 34280 3.9 1321 2.9 992

3-07 2x 365d 40750 3.8 1565 2.9 1183

5-08 2x 365d 60160 4.2 2522 2.9 1766

Life: 1578d 167080 4.0 6600 3.0 4949

### 3rd thru 7th Dams

**Brigeen Aer Gwyneth EX-93 2E GMD DOM**

6-05 2x 365d 48150 3.3 1567 2.8 1371

Life: 2094d 219870 3.3 7288 2.9 6372

**Brigeen Integrity Gwen VG-86 GMD**

3-07 2x 365d 39520 3.8 1518 2.8 1102

Life: 1478d 122980 3.6 4368 2.9 3536

**Roylane Leadman Glory VG-89 GMD DOM**

2-00 2x 365d 30880 3.6 1127 3.1 952

**Western-Cascade Mark Bella**

EX-91 GMD DOM

3-06 2x 365d 36360 3.7 1354 3.0 1041

**Western-Cascade Bell Glory**

EX-90 2E GMD DOM

7-10 2x 305d 34830 3.3 1155 3.0 1037

Life: 1525d 139210 3.6 5018 3.1 4295



**HOWARDVIEWWG GOLD CASEY EX-94**  
FULL SISTER TO LOT 11



**LYLEHAVEN DURHAM CABERNET EX-95 DOM**  
DAM OF LOT 11



## FIVE #1 EMBRYOS

• Worldwide Export Available

### Holstein Plaza Contacts:

Steve Mower +1 240-520-5906

Jennifer Dingbaum +1 320-250-2412

### Braedale Goldwyn

CAN 10705608 GP-CAN EX'05 \*TV \*TL  
PTA -45M +29F +12P 99%R 12/13  
PTA +311NM\$ +0.9PL 2.66SCS -0.1DPR  
PTA +2.82T +2.47UDC +2.36FLC  
GTPI +1876G

### Lylehaven Durham Cabernet

136419774 Excellent-95 DOM B/R  
3-08 2x 365d 40660 4.4 1802 3.6 1475  
5-01 2x 341d 38980 4.2 1623 3.6 1399  
2-00 2x 305d 26470 3.8 1015 3.3 879  
• 2nd 5-Yr-Old, World Dairy Expo 2010  
• 3rd Summer Yearling, Eastern Fall Nat'l 2006

### Shoremar James

5902195C GP-81-CAN GM 2/04 \*TV \*TL  
PTA -645M +6F +4P 99%R 12/13  
PTA +.64T +.62UDC +.21FLC  
GTPI +1226G

### Braedale Baler Twine

6860888C Very Good-86-CAN 29\*  
2-01 2x 365d 30906 4.9 1521 3.4 1052

### Regancrest Elton Durham-ET

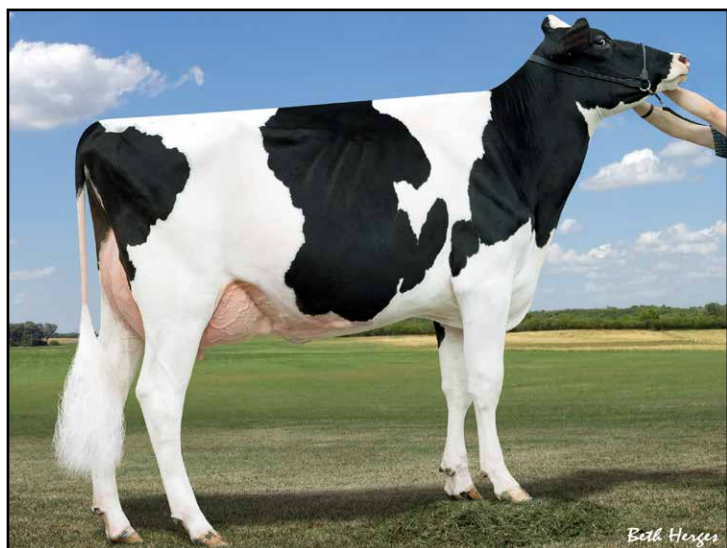
2250783 EX-90 GM 8/01 \*TR \*CV \*TL  
PTA -270M -33F +5P 99%R 12/13  
PTA +2.43T +2.17UDC +2.07FLC  
GTPI +1575G

### Lylehaven Chardonnay-Red-ET

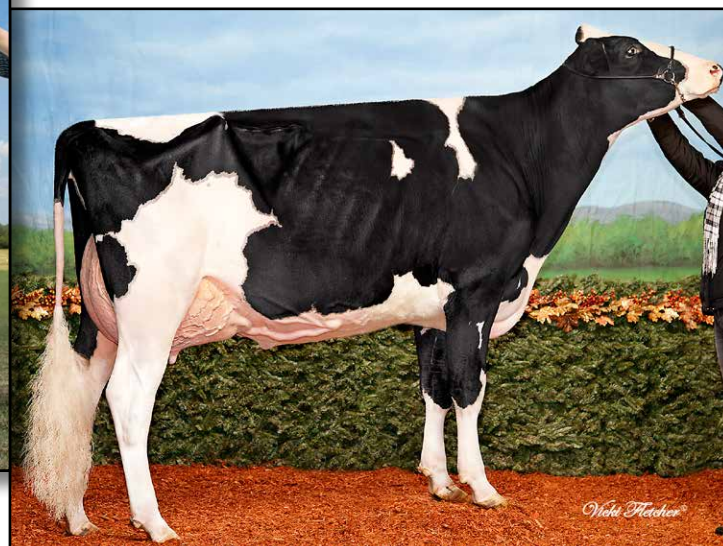
133825671 Excellent-91 EX-MS 3E GMD  
4-09 2x 365d 34320 4.2 1448 3.4 1179  
6-06 2x 364d 32180 4.2 1361 3.1 1096  
9-00 2x 365d 31900 4.1 1321 3.4 1069  
Life: 2369d 192910 4.3 8284 3.5 6688  
• 5th 5-Year-Old, Northeast Fall Nat'l 2008  
• Sired by: STBVQ Rubens

### 3rd thru 5th Dams

**Belroux Storm Cristal EX-96-2E-CAN 2\***  
6-09 2x 365d 33334 3.9 1303 3.3 1096  
Life (4 Lacs): 137201 4.2 5725 3.5 4762  
• Res All-Canadian Mature Cow 2004 & 2007  
• All-Canadian Mature Cow 2006  
• Res Grand Champion, Royal Winter Fair 2006  
• Res Grand Champ, Quebec Int'l '04 & '06  
**Belroux Lindy Irene VG-86-3Y-CAN 2\***  
7-07 2x 365d 25174 4.1 1034 3.5 873  
Life (4 Lacs): 108178 4.1 4453 3.6 3856  
**Belroux Star Irene VG-86-3Y-CAN**  
7-09 2x 305d 19076 3.3 528 3.0 571  
Life (7 Lacs): 115713 3.8 4389 3.3 3832



**BVK ATWOOD ALEX-ET VG-88 VG-MS  
DAM OF LOT 12**



**BVK ATWOOD ARIANNA VG-89-2YR EX-MS  
FULL SISTER TO DAM OF LOT 12**

12

## FIVE #1 EMBRYOS

- Worldwide Export Available

### Holstein Plaza Contacts:

Steve Mower +1 240-520-5906

Jennifer Dingbaum +1 320-250-2412

### Gillette Windbrook

7816429C 91%RHA-NA \*TV \*TL \*TY \*TD  
PTA +854M +52F +30P 92%R 12/13  
PTA +300NM\$ +0.3PL 2.94SCS -1.9DPR  
PTA +2.75T +2.10UDC +2.59FLC  
GTPI +1880

### BVK Atwood Alex-ET

70476954 Very Good-88 VG-MS @ 2-03  
GTPI+1787 +4.05T +2.98UDC +2.85FLC

### Full sisters to Alex

#### BVK Atwood Arianna VG-89-2YR

- Nominated All-American Jr 2-Yr-Old 2012
  - Unanimous All-Canadian Jr 2-Yr-Old 2012
  - 1st Jr 2-Year-Old, Int'l Holstein Show 2012
  - 1st Jr 2-Year-Old, Canadian Nat'l Show 2012
  - Nom All-American Spring Yearling 2011
- #### BVK Atwood Abrianna EX-92 (max)
- 2nd Junior 3 Year Old, Best B&O WDE 2013
  - Grand Champion, Illinois State Fair 2013
  - Grand Champion, Illinois Championship 2013
  - High seller \$49,000, Impact of Ada Sale

### Gillette Brilea F B I-ET

89524C EX-94-CAN EXTRA'05 \*TV \*TL  
PTA +1451M +38F +34P 99%R 12/13  
PTA +1.87T +1.26UDC +1.50FLC  
GTPI +1752G

### Gillette Blitz 2nd Wind-ET

7352248C VG-88-CAN 34\*  
2-02 3x 365d 39096 3.6 1422 3.0 1182

### Maple-Downs-I G W Atwood-ET

8956379C Very Good-87 \*TV \*TL \*TY \*TD  
PTA +261M +48F +12P 99%R 12/13  
PTA +4.66T +3.47UDC +3.85FLC 99%R  
GTPI +1932G

### Ms Kingstead Chief Adeen-ET

17302711 Excellent-94 EEEEE 2E DOM  
3-05 2x 310d 30180 4.0 1209 3.4 1020  
Life: 1382d 100760 4.0 4010 3.4 3458

- 2x Member All-American Produce
- Nom All-American Jr 3-Yr Old
- Nom All-American 4-Yr Old
- Dam of 16 VG and 11 EX Offspring

### 3rd Dam

**C Aitkenbrae Starbuck Ada EX-94 2E DOM**  
13-8 2x 365d 25150 3.0 764 3.2 796

- All-American Produce of Dam 2000
- 1st Eastern Nat'l 3-Yr Old & Grand Ch 1990



MILKSOURCE SHOCK AFFAIR VG-87  
DAM OF LOT 13



AMLAIIRD LEE ALICE EX-94 2E  
2ND DAM OF LOT 13

13

## FOUR #1 EMBRYOS

- Worldwide Export Available

### Holstein Plaza Contacts:

Steve Mower +1 240-520-5906

Jennifer Dingbaum +1 320-250-2412



### KHW Elm-Park Acme-ET \*RC (SEXED)

61720218 Excellent-90 GM \*TV \*TL \*TD  
PTA -62M +21F +18P 98%R 12/13  
PTA +3.2PL 3.12SCS -.2DPR  
PTA +2.73T +2.94UDC +1.52FLC 97%R  
GTPI +1865G

### Milksource Shock Affair-ET

69954137 Very Good-87-2YR VG-MS  
• Res Junior Champion, GA National Fair 2012  
• From 3 Generations of EX-94 2E cows.

### Ladino Park Talent-Imp-ET

AUS 930377 EX-90 ST\*03 \*RC \*TV \*TL  
PTA -267M -32F +2P 99%R 12/13  
PTA +2.10T +2.25UDC +1.09FLC  
GTPI +1420G

### Kamps-Hollow Altitude-ET \*RC

129136431 EX-95 EEEEE 2E DOM  
7-00 2x 365d 39690 4.7 1849 3.5 1385

### Ms Atlees Sht Aftershock

65249839 \*TV \*TL \*TY \*TD  
PTA +426M +22F +2P 99%R 12/13  
PTA +3.12T +2.58UDC +2.06FLC 99%R  
GTPI +1762G

### Amlaird Lee Alice-ET

7293258C Excellent-94 EEEEE 2E  
7-05 2x 365d 36980 50 1837 3.2 1186  
4-02 2x 365d 31530 4.8 1500 3.2 1008  
Life: 2059d 129610 4.8 6177 3.3 4334  
• All-American Junior 2-Year-Old 2003

### 3rd thru 4th Dams

#### Ms Kingstead Chief Adeen-ET

EX-94 2E DOM  
3-05 2x 310d 30180 4.0 1209 3.4 1020  
Life: 1382d 100760 4.0 4010 3.4 3458

- 2x Member All-American Produce

- Nom All-American Jr 3-Yr Old

- Nom All-American 4-Yr Old

- Dam of 16 VG and 11 EX Offspring

#### C Aitkenbrae Starbuck Ada EX-94 2E DOM

13-8 2x 365d 25150 3.0 764 3.2 796

- All-American Produce of Dam 2000

- 1st Eastern Nat'l 3-Yr Old & Grand Ch 1990



**SPEEK-NJ UNO DECKLYN-ET**  
MATERNAL SISTER TO DAM OF LOT 14



**REGAN-ALH PLANET DELORIA VG-86-2YR DOM**  
2ND DAM OF LOT 14

14

## FOUR #1 EMBRYOS

• Worldwide Export Available

### Holstein Plaza Contacts:

Steve Mower +1 240-520-5906

Jennifer Dingbaum +1 320-250-2412

### Larcrest Commander-ET

58591942 \*TV \*TL \*TY \*TD

PTA +1580M +82F +65P 72%R 12/13

PTA +4.7PL 2.72SCS +0.3DPR

PTA +3.21T +2.92UDC +2.45FLC 72%R

GTPI +2448G / GPA-LPI+3468 / RZG+160

### Speek-NJ Fernand Depp \*TL \*TD

71619106 Born: January 8, 2013

GTPI+2303+1954M +94F 78P +1.92T

### Mountfield SSI Dcy Mogul

3006972816 \*TV \*TL \*TY \*TD

PTA +1226M +73F +44P 77%R 12/13

PTA +2.84T +2.97UDC +2.79FLC 77%R

GTPI+2350G

### Larcrest Calinda-ET

70119330

### Cabon Fernand

FRA 2941261203 \*TV \*TL \*TY

PTA +1349M +93F +57P 76%R 12/13

PTA +2.09T +1.96UDC +1.94FLC 77%R

GTPI +2256G

### Regan-Alh Planet Deloria-ET

66624771 VG-86 VG-MS @ 2-08 DOM

GTPI+2104+1861M +57F +69P +1.74T

2-04 3x 305d 29400 4.4 1300 3.4 994

### 3rd thru 8th Dams

#### A-L-H Destiny-ET

61361722 VG-87-3YR GMD DOM

2-04 2x 365d 33199 3.8 1259 3.6 1202

• Over 20 sons in A.I.

#### Markwell Durham Daisy-ET

EX-92 EEEEE GMD DOM

6-07 2x 365d 40490 4.0 1628 3.3 1338

Life: 1200d 109000 3.8 4181 3.4 3740

• 3rd Sr 2-Yr Old, Int'l Holstein Show 2002

#### Markwell Luke Rapture-ET

EX-92 EEEEE 4E GMD DOM

5-06 2x 365d 39400 4.2 1649 3.3 1304

Life: 1859d 137840 3.9 5347 3.6 4964

#### Markwell Bstar E Raven-ET

EX-95 EEEEE 3E GMD DOM

4-09 2x 365d 36610 4.3 1580 3.4 1255

Life: 2387d 160020 4.1 6623 3.6 7533

• 1st W Fall Nat'l Aged Dry Cow 1997

• Finalist for Queen of the Breed

#### Markwell Mark Elite EX-92 4E GMD DOM

7-00 2x 365d 36230 3.9 1426 3.2 1164

Life (4 Lacs): 211430 3.8 8109 3.6 7531

#### Rockalli Mars Emily EX-94 4E GMD DOM

6-03 2x 365d 26971 4.0 1080 3.4 904

Life (7 Lacs): 182966 3.8 7019 3.5 6329



**GAF-FINE OBSERV CARLESHA-ET VG-86 VG-MS**  
DAM OF LOT 15



**LARCREST CHESSA-ET VG-87 VG-MS**  
2ND DAM OF LOT 15

**15**

**Holstein Plaza Contacts:**

Steve Mower +1 240-520-5906  
Jennifer Dingbaum +1 320-250-2412

**Cookiecutter Petron Halogen**

3008710387 \*TV \*TL \*TY \*TD  
PTA +974M +57F +39P 73%R 12/13  
PTA +8.3PL 2.40SCS +3.6DPR  
PTA +2.81T +3.11UDC +1.12FLC 72%R  
GTPI +2507G

**Gaf-Fine Observ Carlesha-ET**

65943592 Very Good-86 VG-MS @ 2-08  
GTPI+2244 +971M +64F +44P +2.64T

**SIX #1 EMBRYOS**

• Worldwide Export Available

**Welcome Super Petrone-ET**

69207641 \*TR \*TV \*TL \*TY \*TD  
PTA +984M +51F +28P 76%R 12/13  
PTA +2.33T +2.29UDC +1.56FLC 76%R  
GTPI +2281G

**Cookiecutter MOM Halo-ET**

3007069733 Very Good-88 EX-MS @ 2-09  
2-00 3x 365d 35410 5.2 1832 3.5 1241

**De-Su Observer-ET**

65917481 EX-90 \*TR \*TV \*TL \*TY \*TD  
PTA +1416M +49F +43P 99%R 12/13  
PTA +2.64T +2.98UDC +.30FLC  
GTPI +2186G

**Larcrest Chessa-ET**

139972483 Very Good-87 VG-MS @ 3-01  
GTPI+2075 +160M +58F +31P +2.61T  
2-08 2x 365d 25146 4.5 1131 3.7 930  
• Sired by Lylehaven Lightning

**3rd thru 7th Dams**

**Larcrest Crimson-ET** EX-92 GMD DOM

2-02 2x 365d 36060 4.7 1710 3.6 1283

**Larcrest Cosmopolitan** VG-87 DOM

2-04 2x 365d 30930 4.1 1261 3.6 1119

**Larcrest Oside Champagne-TW**

EX-90 GMD DOM

2-03 2x 365d 29110 4.5 1322 3.7 1077

• 17 sons in A.I. worldwide

**Larcrest Juror Chanel** EX-93 3E GMD DOM

9-00 2x 365d 48460 4.0 1943 3.4 1648

Life: 2899d 245420 4.3 10482 3.6 8866

**Larcrest Lindy Chandra** VG-85

2-05 2x 365d 20896 4.8 993 3.8 803

**Larcrest Inspiration Carly** VG-87

3-05 2x 305d 21800 4.5 973 3.3 802



**GAF-FINE OBSERV CARLESHA-ET VG-86 VG-MS**  
DAM OF LOT 16



**LARCREST CHESSA-ET VG-87 VG-MS**  
2ND DAM OF LOT 16

**16**

## FOUR #1 EMBRYOS

- Worldwide Export Available

### Holstein Plaza Contacts:

Steve Mower +1 240-520-5906

Jennifer Dingbaum +1 320-250-2412

### Mountfield SSI Dcy Mogul

3006972816 \*TV \*TL \*TY \*TD

PTA +1226M +73F +44P 77%R 12/13

PTA +5.3PL 2.70SCS +0.4DPR 4.9%DCE

PTA +2.84T +2.97UDC +2.79FLC 77%R

GTPI+2350G

### Gaf-Fine Observ Carlesha-ET

65943592 Very Good-86 VG-MS @ 2-08

GTPI+2244 +971M +64F +44P +2.64T

### Coyne-Farms Dorcy-ET

139005002 \*BY \*TV \*TL

PTA +1603M +46F +46P 99%R 12/13

PTA +3.00T +3.22UDC +3.07FLC 98%R

GTPI +2267G

### Mountfield Marsh Maxine-ET

62784081 Very Good-88 EX-MS DOM

2-03 2x 159d 14320 4.3 611 3.4 481 inc.

### De-Su Observer-ET

65917481 EX-90 \*TR \*TV \*TL \*TY \*TD

PTA +1416M +49F +43P 99%R 12/13

PTA +2.64T +2.98UDC +.30FLC

GTPI +2186G

### Larcrest Chessa-ET

139972483 Very Good-87 VG-MS @ 3-01

GTPI+2075 +160M +58F +31P +2.61T

2-08 2x 365d 25146 4.5 1131 3.7 930

- Sired by Lylehaven Lightning

### 3rd thru 7th Dams

**Larcrest Crimson-ET** EX-92 GMD DOM

2-02 2x 365d 36060 4.7 1710 3.6 1283

**Larcrest Cosmopolitan** VG-87 DOM

2-04 2x 365d 30930 4.1 1261 3.6 1119

**Larcrest Oside Champagne-TW**

EX-90 GMD DOM

2-03 2x 365d 29110 4.5 1322 3.7 1077

- 17 sons in A.I. worldwide

**Larcrest Juror Chanel** EX-93 3E GMD DOM

9-00 2x 365d 48460 4.0 1943 3.4 1648

Life: 2899d 245420 4.3 10482 3.6 8866

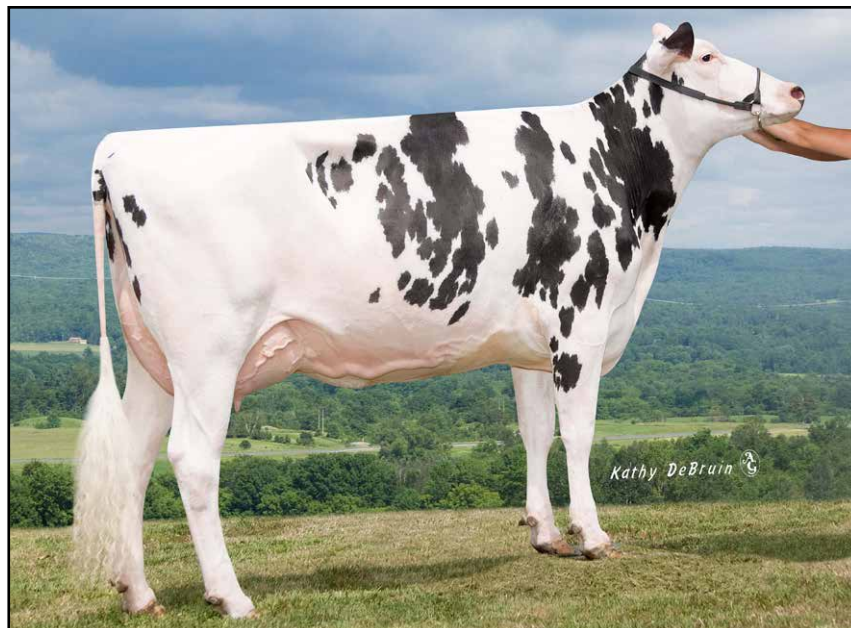
**Larcrest Lindy Chandra** VG-85

2-05 2x 365d 20896 4.8 993 3.8 803

**Larcrest Inspiration Carly** VG-87

3-05 2x 305d 21800 4.5 973 3.3 802





**WALLMAC JEEVES COY GLORY-ET VG-85 VG-MS**  
2ND DAM OF LOT 17

**17**

**Holstein Plaza Contacts:**

Steve Mower +1 240-520-5906  
Jennifer Dingbaum +1 320-250-2412

**Clear-Echo Lexor Racer-ET**

71974211 \*TV \*TL \*TY  
PTA +1446M +64F +59P 73%R 12/13  
PTA +860NM\$ +6.0PL 2.57SCS +2.0DPR  
PTA +2.86T +2.89UDC +2.00FLC 72%R  
GTPI +2482G / gRZG+160  
DGV-GLPI +3583G +2249M +15 Comf.

**MD-Maple-Lawn Uno Chance-ET**

72302927 Born: November 3, 2012  
GTPI+2234 +909M +54F +37P +2.73T

**FIVE #1 EMBRYOS**

• Worldwide Export Available

**Generations Lexor**

11098658C \*TV \*TL  
PTA +1237M +78F +65P 77%R 12/13  
PTA +2.57T +1.76UDC +2.30FLC  
GTPI +2256G

**Clear-Echo Observer 2280-ET**

68669880 Good Plus-84  
2-01 3x 280d 22539 3.7 823 3.1 695

**Amighetti Numero Uno-ET**

ITA 17990915143 \*TV \*TL \*TY  
PTA +858M +80F +39P 77%R 12/13  
PTA +2.88T +2.84UDC +1.93FLC 77%R  
GTPI +2435G

**Wallmac Jeeves Coy Glory-ET**

66790439 Very Good-85 VG-MS  
3-02 2x 365d 27570 3.9 1089 3.2 889

**3rd thru 14th Dams**

**Wallmac Goldwyn Paci Coy-ET EX-92 2E**  
4-06 2x 365d 29300 4.5 1315 3.4 985  
**Miss Rudolph Nip Pacific EX-90 DOM**  
5-10 2x 365d 32040 4.2 1332 3.5 1128  
**Miss Arlnr Jemima Nip-ET EX-92 2E DOM**  
3-06 2x 365d 31680 4.6 1451 3.6 1143  
**Miss Mascot Sandy Jemima-ET VG-86 1\***  
4-11 2x 365d 34590 4.0 1387 3.4 1190  
**Conant-Acres-JY Bell Sandy VG-86 DOM**  
7-04 2x 365d 30390 4.7 1435 3.6 1089  
**Conant-Acres-JY Samara-ET EX-90 DOM**  
3-05 2x 365d 27220 4.6 1250 3.8 1032  
**Swampy-Hollow Elevation Sweet**  
EX-92 EX-MS 3E GMD DOM 5\*  
5-05 2x 365d 26170 4.9 1273  
Life: 2121d 115148 4.7 5467  
**Swampy-Hollow Sugar-TW**  
EX-91 EX-MS 3E GMD DOM 5\*  
6-08 2x 365d 24299 4.8 1157 4.8 1157  
**Swampy-Hollow Lad Connie VG -87**  
6-01 2x 324d 20470 4.5 917  
**Swampy-Hollow Cinderella VG-88**  
8-10 2x 305d 12271 4.6 567  
**Swampy-Hollow Inka Cindy-TW EX-92 3E**  
5-02 2x 365d 21570 4.0 871  
Life (7 Lacs): 132507 3.9 5176  
**Valerie Cherrydale Lucifer EX-91 3E GMD**  
6-11 2x 325d 19202 4.1 791  
Life (13 Lacs): 180561 4.2 7573



**ELM-MOUND ADVNT REIN-RED-ET EX-90 EX-MS  
DAM OF LOT 18**



**STELBRO RENITA RANGER-RED EX-94 3E  
3RD DAM OF LOT 18**

**18**

### THREE #1 EMBRYOS

- Worldwide Export Available

#### Holstein Plaza Contacts:

Steve Mower +1 240-520-5906

Jennifer Dingbaum +1 320-250-2412

#### Mr Apples Armani-ET \*RC

68571374 \*TV \*TL \*TY \*TD

PTA -603M +60F +17P 78%R 12/13

PTA +2.7PL 2.81SCS +1.0DPR

PTA +3.28T +3.02UDC +3.12FLC 77%R

GTPI +2126G

#### Elm-Mound Advnt Rein-Red-ET

137874378 Excellent-90 EX-MS

5-03 2x 365d 33759 4.0 1366 3.6 1232

3-11 2x 365d 33761 3.7 1273 3.7 1246

2-02 2x 365d 24980 3.9 979 3.4 857

#### Braedale Goldwyn

CAN 10705608 GP-CAN EX'05 \*TV \*TL

PTA -45M +29F +12P 99%R 12/13

PTA +2.82T +2.47UDC +2.36FLC

GTPI +1876G

#### KHW Regiment Apple-Red-ET

135511521 Excellent-96 DOM

4-01 2x 365d 35750 4.7 1682 3.7 1314

- Grand Champion, Grand Int'l Re&W Show

#### KHW Kite Advent-Red-ET

133002953 Excellent-95 \*TV \*TL \*TD

PTA -1005M -11F -21P 99%R 12/13

PTA +2.54T +2.24UDC +1.61FLC

GTPI +1574G

#### Stelbro Renita Ravel-ET

10566326C Very Good-88 VVVVE \*RC

4-04 2x 365d 27900 3.3 931 3.1 864

3-04 2x 284d 26709 3.3 886 3.1 829

2-01 2x 365d 26228 3.7 977 3.2 836

Maternal sister to Ravel

#### Carrousel RM Rolanda-ET \*RC EX-94

6-02 2x 365d 61510 3.7 2294 2.6 1587

#### 3rd thru 7th Dams

##### Stelbro Renita Ranger-Red EX-94 3E

7-04 2x 365d 29760 3.9 1168 3.1 924

- All-American Re&W Aged Cow 2001

- Grand Champ Grand National 2001, 1998

- Unanimous AA Re&W 4-Yr-Old 1998

- All-American Re&W Sr 2-Yr-Old Cow 1996

- All-American Re&W Winter Yrlg 1995

##### Stelbro Enhancer Ripple-Red EX-CAN-4E 7\*

9-05 2x 365d 31552 4.5 1413 3.2 1008

Life (6 Lacs): 202164 4.5 9112 3.4 6867

##### Stelbro Regal Rene EX-3E-CAN 3\*

8-09 2x 364d 21874 4.1 893 3.7 805

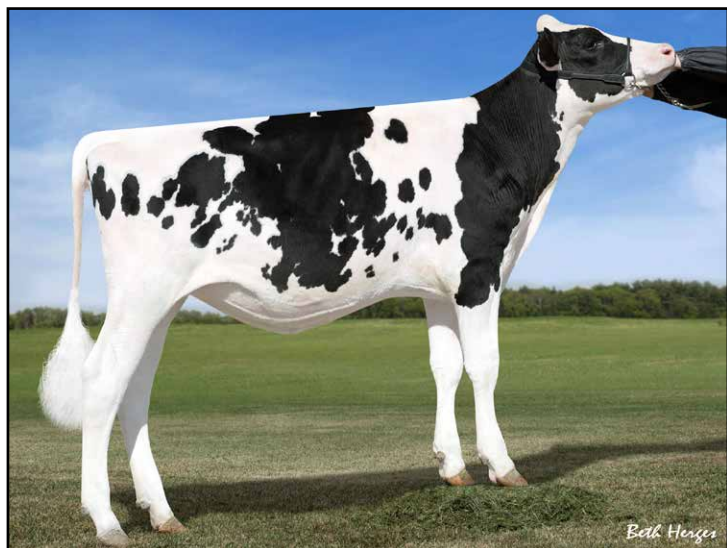
Life (7 Lacs): 134725 3.9 5190 3.4 4619

##### Stelbro Astra Starbrite VG-85-CAN

6-06 2x 295d 18210 3.8 699 3.5 631

##### Langstate Star VG-85-CAN

4-03 2x 292d 17996 4.3 778



**SPEEK-NJ CARROT CAKE-ET**  
FULL SISTER TO DAM OF LOT 19



**LARCREST CREDIT-ET VG-85-2YR**  
2ND DAM OF LOT 19

19

## FOUR #1 EMBRYOS

- Worldwide Export Available

### Holstein Plaza Contacts:

Steve Mower +1 240-520-5906

Jennifer Dingbaum +1 320-250-2412

### Clear-Echo Lexor Racer-ET

71974211 \*TV \*TL \*TY

PTA +1446M +64F +59P 73%R 12/13

PTA +860NM\$ +6.0PL 2.57SCS +2.0DPR

PTA +2.86T +2.89UDC +2.00FLC 72%R

GTPI +2482G / gRZG+160 / GPA-LPI+3394

### Speak-NJ Chocolate Chip-ET

71619118 Born: January 10, 2013

GTPI+2261 +1868M +80F +59P +1.51T

DGV-GLPI +3285 + 2358M

Maternal sisters to Chocolate Chip

### Speak-NJ Predest Crumpet-ET

GTPI+2573 +1003NM\$ +2.75T

### Speak-NJ-I Supersire Calypso

GTPI+2447 +892NM\$

### Speak-NJ Predest Cutie-ET

GTPI+2442 +871NM\$ +2.58T

### Generations Lexor

11098658C \*TV \*TL

PTA +1237M +78F +65P 77%R 12/13

PTA +2.57T +1.76UDC +2.30FLC

GTPI +2256G

### Clear-Echo Observer 2280-ET

68669880 Good Plus-84

2-01 3x 280d 22539 3.7 823 3.1 695

### Cabon Fernand

FRA2941261203 \*TV \*TL \*TY

PTA +1349M +93F +57P 76%R 12/13

PTA +2.09T +1.96UDC +1.94FLC 75%R

GTPI +2256G

### Larcrest Credit-ET

56265392 Very Good-85 @ 2-11

GTPI+2241 +1953M +76F +58P +2.06T

2-06 2x 181d 18774 3.7 649 3.3 615 inc.

- Sired by: Badger-Bluff Fanny Freddie

### 3rd thru 7th Dams

#### Larcrest Comet-ETS VG-87 DOM

2-02 2x 305d 28190 4.3 1205 3.3 921

- Full sister to Larcrest Cancun at ABS

- Full sister to O-Cosmopolitan

#### Larcrest Cosmopolitan VG-87 DOM

2-04 2x 365d 30930 4.1 1261 3.6 1119

#### Larcrest Oside Champagne-TW

EX-90 GMD DOM

2-03 2x 365d 29110 4.5 1322 3.7 1077

- 17 sons in A.I. worldwide

#### Larcrest Juror Chanel EX-93 3E GMD DOM

9-00 2x 365d 48460 4.0 1943 3.4 1648

Life: 2899d 245420 4.3 10482 3.6 8866

#### Larcrest Lindy Chandra VG-85

2-05 2x 365d 20896 4.8 993 3.8 803

#### Larcrest Inspiration Carly VG-87

3-05 2x 305d 21800 4.5 973 3.3 802



MS ARIEL FREDDIE ANNA-ET VG-85-2YR 86-MS  
DAM OF LOT 20



MS ATLEES GOLDWYN ARIEL-ET EX-92 EX-MS  
2ND DAM OF LOT 20

**20**

## TWO #2 IVF & TWO #2 IVF FEMALE EMBRYOS

• Eligible for shipment to the U.S. and export to EU and China

### Holstein Plaza Contacts:

Steve Mower +1 240-520-5906

Jennifer Dingbaum +1 320-250-2412

### Clear-Echo Lexor Racer-ET

71974211 \*TV \*TL \*TY

PTA +1446M +64F +59P 73%R 12/13

PTA +860NM\$ +6.0PL 2.57SCS +2.0DPR

PTA +2.86T +2.89UDC +2.00FLC 72%R

GTPI +2482G / gRZG+160

DGV-GLPI +3583 +2249M +15 Comf.

### Ms Ariel Freddie Anna-ET

140893894 Very Good-85 86-MS

GTPI+2160 +309M +41F +22P +2.75T

2-05 2x 81d 8290 5.1 423 3.5 290 inc.

• Highest GTPI milking daughter of Ariel

Dam of:

### Ms Annas Epic Andrey-a-ET

GTPI+2322 +1165M +60F +49P +2.94T

Dam of:

### Ri-Val-Re Lqd Gld-ET

GTPI+2575 +1621M +82F +63P +3.07T

• No. 3 GTPI Female in the U.S. (2/14)

### Generations Lexor

11098658C \*TV \*TL

PTA +1237M +78F +65P 77%R 12/13

PTA +2.57T +1.76UDC +2.30FLC

GTPI +2256G

### Clear-Echo Observer 2280-ET

68669880 Good Plus-84

2-01 3x 280d 22539 3.7 823 3.1 695

### Badger-Bluff Fanny Freddie-ET

60996956 99%RHA-NA \*TV \*TL

PTA +1252M +53F +40P 99%R 12/13

PTA +1.53T +1.66UDC +2.69FLC

GTPI +2249G

### Ms Atlees Goldwyn Ariel-ET

63164327 Excellent-92 EX-MS @ 4-06

4-00 2x 365d 36557 4.4 1595 3.2 1181

2-00 2x 365d 28330 4.2 1186 3.3 934

• Res All-American Junior 2-Year-Old 2009

• Full sister to ATWOOD

### 3rd thru 6th Dams

#### MD-Delight Durham Atlee-ET

EX-92 EEEEE DOM

3-11 2x 365d 38290 5.5 2091 3.3 1249

• All-American Sr 3-Yr-Old Cow 2005

• Res Int Champ, International Show 2005

#### MD-Delight Strm Amberlee-ET

VG-88 DOM

2-02 2x 365d 26170 3.7 969 3.2 835

#### Ms Kingstead Chief Adeen-ET

EX-94 2E DOM

3-05 2x 310d 30180 4.0 1209 3.4 1020

Life: 1382d 100760 4.0 4010 3.4 3458

• 2x Member All-American Produce

• Nom All-American Jr 3-Yr Old

• Nom All-American 4-Yr Old

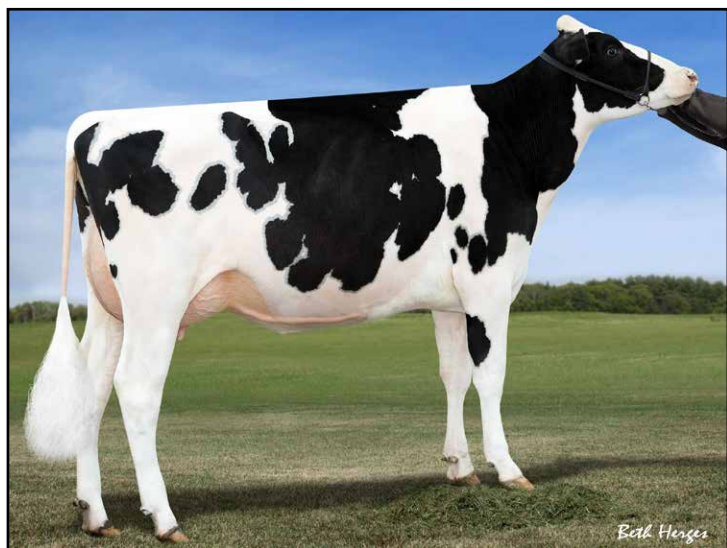
• Dam of 16 VG and 11 EX Offspring

#### C Aitkenbrae Starbuck Ada EX-94 2E DOM

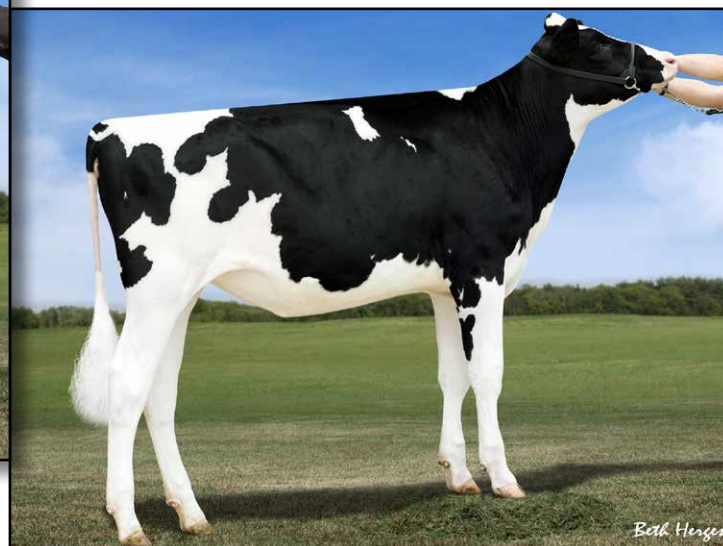
13-8 2x 365d 25150 3.0 764 3.2 796

• All-American Produce of Dam 2000

• 1st Eastern Nat'l 3-Yr Old & Grand Ch 1990



FARNEAR-TBR BOWSR BOYANA VG-85  
DAM OF LOT 21



MS BOYANA UNO BRINLEY • GTPI+2395  
MATERNAL SISTER TO LOT 21

21

## THREE #1 EMBRYOS

• Worldwide Export Available

### Holstein Plaza Contacts:

Steve Mower +1 240-520-5906

Jennifer Dingbaum +1 320-250-2412

### De-Su Nominee-ET

70626023 \*TY

PTA +1511M +64F +58P 72%R 12/13

PTA +5.4PL 2.59SCS +2.2DPR

PTA +2.11T +1.86UDC +1.88FLC 72%R

GTPI +2365G

### Farnear-TBR Bowsr Boyana

69822164 Very Good-85 VG-MS 2YR

GTPI+2056 +872M +14F +34P +3.49T

2-02 2x 305d 18950 5.6 1059 3.2 600

### Amighetti Numero Uno-ET

ITA 17990915143 \*TV \*TL \*TY

PTA +858M +80F +39P 77%R 12/13

PTA +2.88T +2.84UDC +1.93FLC 77%R

GTPI +2435G

### Coyne-Farms Mass Jill-ET

68677629

2-03 3x 183d 14679 2.7 399 3.0 436

### Laeschway Jet Bowser-ET

64872951 \*TV \*TL \*TY \*TD

PTA +349M -14F +26P 99%R 12/13

PTA +1.40T +2.18UDC +1.73FLC

GTPI +1836G

### Klassic Mac Barb-ET

61143553 Very Good-85 VG-MS @ 2-11

2-05 2x 365d 30439 4.0 1206 3.5 1067

• Full sister to Klassic Big Time

### 3rd thru 10th Dams

**Regancrest Barbi-ET** EX-90 DOM

5-00 2x 305d 27379 3.2 869 3.5 948

**Regancrest-PR Barbie-ET**

EX-92 GMD DOM

2-06 2x 365d 31690 3.9 1237 3.3 1050

• HM All-American Junior 3-Yr Old 2004

• Former #1 Type Cow

**Regancrest Juror Brina-ET** EX-92 GMD

4-04 2x 365d 40640 3.6 1478 2.8 1140

• Member Nom AA Best 3 Females 2000

• Res Grand Champ Iowa State Show 2000

**Regancrest Aerostar Bert-ET**

EX-90 GMD DOM

5-02 2x 365d 37790 3.6 1357 3.0 1143

Life: 1305d 109350 3.7 4031 3.1 3350

**Regancrest Mark Chairman Bea**

EX-91 2E GMD

7-09 2x 365d 33630 3.8 1276 2.9 988

Life: 2036d 140130 4.1 5711 3.1 4350

**Regancrest Board Chairman Bea** EX-90

5-09 2x 365d 26010 4.1 1059 3.2 835

**Regancrest Apache Standout Bea** VG-86

4-10 2x 320d 19070 4.0 766

Life: 2432d 131940 3.6 4744

**Regancrest Standout Bertrand** VG-85

4-01 2x 355d 17460 3.3 571



**TRANQUILITY AC DREARYS XEN-ET**  
DAM OF LOT 22



**RONELEE BOLIVER DREARY-ET VG-86 VG-MS**  
2ND DAM OF LOT 22

**22**

## FOUR #1 EMBRYOS

• Worldwide Export Available

### Holstein Plaza Contacts:

Steve Mower +1 240-520-5906

Jennifer Dingbaum +1 320-250-2412

### Mr Chassity Colt 45-ET

70476906 \*RC \*PO \*TV \*TL \*TY  
PTA +1178M +30F +29P 76%R 12/13  
PTA +450NM\$ +2.8PL 2.77SCS +0.3DPR  
PTA +3.03T +2.79UDC +2.54FLC 75%R  
GTPI +2075G

### Tranquility AC Drearys Xen-ET

107203343C  
GTPI+2144 +1251M +36F +42P +2.68T

### Sandy-Valley Colt P-Red-TW

68731810 \*PO \*TV \*TL \*TY \*TD  
PTA +824M +3F +27P 87%R 12/13  
PTA +1.90T +2.09UDC +1.48FLC 82%R  
GTPI +1919G

### Regancrest S Chassity-ET

62496899 Excellent-92 EEEVE DOM  
3-10 2x 365d 42280 4.3 1798 2.5 10700

### De-Su 521 Bookem-ET

66636657 \*TR \*TV \*TL \*TY \*TD  
PTA +1452M +44F +54P 98%R 12/13  
PTA +2.79T +2.27UDC +1.72FLC 95%R  
GTPI +2257G

### Ronelee Boliver Dreary

139531796 Very Good-86 @ 3YR DOM  
GTPI+2068 +1081M +55F +41P +2.12T  
2-04 2x 305d 23999 3.8 915 3.4 822  
• Maternal sister to Domain  
• Dam to Deligence & Deligent @ TAG  
• Dam to several high testing daughter

### 3rd thru 8th Dams

#### Ronelee Outside Dabble

EX-91 2E GMD DOM  
5-03 3x 365d 44530 3.6 1612 3.0 1313  
Life: 1418d 146440 3.6 5215 3.2 4653

#### Ronelee Rudolph Dimple

EX-93 EEEEE 2E DOM  
5-08 3x 365d 45290 3.7 1713 3.1 1428  
Life: 1582d 164010 3.6 5900 3.2 5284

#### Select Mark Dolly

EX-95 EEEEE 4E GMD DOM  
6-07 3x 365d 45870 4.0 1846 3.1 1431  
Life: 3295d 276300 3.6 9992 3.2 8964

#### Select Southwind Dinah EX-91 EEEEE 2E

5-11 3x 365d 30080 3.7 1124 3.3 981  
Life: 1505d 103810 3.9 4010 3.3 3456

#### Select Mars Tony Diana VG-86 VG-MS

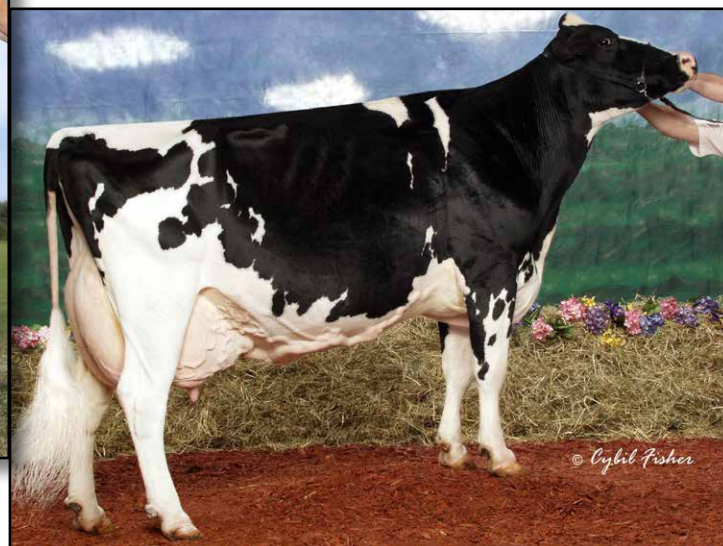
3-04 2x 365d 26200 4.2 1112 3.5 916

#### Dinah Select Wayne Dixie VG-85

3-07 2x 305d 23460 4.0 935 3.4 789



**BKB DURHAM AMELIA EX-93-5YR EEEEE**  
DAM OF LOT 23



**SHOREMAR S ALICIA EX-97-3E EEEEE**  
2ND DAM OF LOT 23

# 23

## FIVE #1 EMBRYOS

• Worldwide Export Available

### Holstein Plaza Contacts:

Steve Mower +1 240-520-5906

Jennifer Dingbaum +1 320-250-2412

### Apples Absolute-Red-ET

139358472\*CV \*TL \*TD

PTA -1442M 20F -4P 98%R 12/13

PTA -1.3PL 3.38SCS -2.0DPR

PTA +3.83T +3.80UDC +2.85FLC 97%R

GTPI +1618G

### BKB Durham Amelia-ET

139192355 Excellent-93 EEEEE

3-11 2x 349d 30380 3.5 1056 3.6 1098

3-00 2x 305d 22570 3.8 865 3.5 798

### Ladino Park Talent-Imp-ET \*RC

AUS 9300377 \*TV \*TL \*TY

PTA -267M -32F +2P 99%R 12/13

PTA +2.10T +2.25UDC +1.09FLC

GTPI +1420G

### KHW Regiment Apple-Red-ET

135511521 Excellent-95 2E DOM

4-01 2x 365d 35750 4.7 1682 3.7 1314

• Grand Ch, Grand Int'l R&W Show 2011

### Regancrest Elton Durham-ET

2250783 EX-90 GM 8/01 \*TR \*CV \*TL

PTA -270M -33F +5P 99%R 12/13

PTA +2.43T +2.17UDC +2.07FLC

GTPI +1575G

### Shoremar S Alicia-ET

6434408C Excellent-97 EEEEE 3E

8-10 2x 365d 38250 4.3 1650 3.3 1270

6-10 2x 365d 35760 4.3 1544 3.4 1214

Life: 2102d 185002 4.2 7731 3.4 6288

### ALICIA!

- Nom for Queen of the Breed II 2003
- Res All-American 125,000 lb Cow 2004
- HHM All-Time AA 5-Yr Old 2003
- All-American Aged Cow 2003
- All-American 5-Yr Old 2000
- All-World & People Choice Winner 2000
- Grand & Supreme Champ RAWF 2000
- AA & All-Canadian 5-Yr Old 2000
- All-Canadian 4-Yr Old 1999
- All-Canadian Jr 2-Yr Old 1997

Full sister to S Alicia

### Ms Kingstead Chief Adeen-ET

EX-94 2E DOM

3-05 2x 310d 30180 4.0 1209 3.4 1020

Life: 1382d 100760 4.0 4010 3.4 3458

- 2x Member All-American Produce
- Nom All-American Jr 3-Yr Old
- Nom All-American 4-Yr Old
- Dam of 16 VG and 11 EX Offspring

### 3rd Dam

Aitkenbrae Starbuck Ada EX-94 2E DOM

13-8 2x 365d 25150 3.0 764 3.2 796

2-05 2x 362d 25000 3.6 908 3.2 798

- All-American Produce of Dam 2000
- 1st Eastern Nat'l 3-Yr Old & Grand Ch 1990



**PINE-TREE 1258DEANN 4784-ET VG-86 VG-MS  
DAM OF LOT 24**



**DE-SU 199-ET VG-85 VG-MS  
MATERNAL SISTER TO DAM OF LOT 242**

**24**

## SIX #1 IVF FEMALE EMBRYOS

• Eligible for shipment to the U.S. and export to EU and China

### Holstein Plaza Contacts:

Steve Mower +1 240-520-5906

Jennifer Dingbaum +1 320-250-2412

### Mr Welcome Hill Tango-ET

70750485

PTA +2238M +70F +60P 72%R 12/13

PTA +4.4PL 2.71SCS +1.2DPR

PTA +2.99T +3.11UDC +2.24FLC 75%R

GTPI +2432G

### Pine-Tree 1258 Deann 4784-ET

69804548 Very Good-86 VG-MS @ 3-00

GTPI+2238 +377M +63F +34P +5.5PL

• Highest GTPI Deann daughter

• Same family as MOGUL

Maternal sister to Deann

**De-Su 199-ET VG-85 VG-MS @ 3-03**

GTPI+2336 +734M +94F +56P +2.43T

• Former No. 1 GTPI Heifer in the Breed

### De-Su 521 Bookem-ET

66636657 \*TR \*TV \*TL \*TY \*TD

PTA +1452M +44F +54P 98%R 12/13

PTA +2.79T +2.27UDC +1.72FLC 95%R

GTPI +2257G

### Co-op Boliver Yoyo-ET

63285427 Very Good-85 DOM

2-01 2x 365d 28970 3.7 1060 3.6 1047

### England-Schill Deann 58A-ET

60000299 GM 8/09 \*TV \*TL \*TY

PTA +732M +16F +17P 99%R 12/13

PTA +1.99T +1.76UDC +2.06FLC

GTPI+1895G

### Pine-Tree Missy Miranda-ET

61733095 Very Good-86 DOM

3-08 3x 365d 35550 4.9 1730 3.9 1393

Life: 1539d 122890 4.5 5535 3.8 4715

### 3rd thru 7th Dams

#### Wesswood-HC Rudy Missy-ET

EX-92 3E GMD DOM

4-11 3x 365d 40880 4.1 1665 3.2 1308

Life: 1262d 119610 4.1 4885 3.2 3804

#### Wesswood Elton Mimi EX-90 GMD DOM

3-05 2x 365d 35380 3.3 1160 3.2 1121

#### Wesswood Mandingo Ivy VG-87 VEEVV

6-05 2x 365d 36330 3.6 1305 3.0 1087

Life: 1835d 144060 3.4 4933 3.1 4412

#### Wesswood Astro Matt Esther

VG-87 GMD DOM

6-08 2x 365d 31860 3.5 1125 3.1 982

Life: 1847d 140110 3.6 5029 3.2 4424

#### Wesswood Bell Claudette

VG-87 GMD DOM

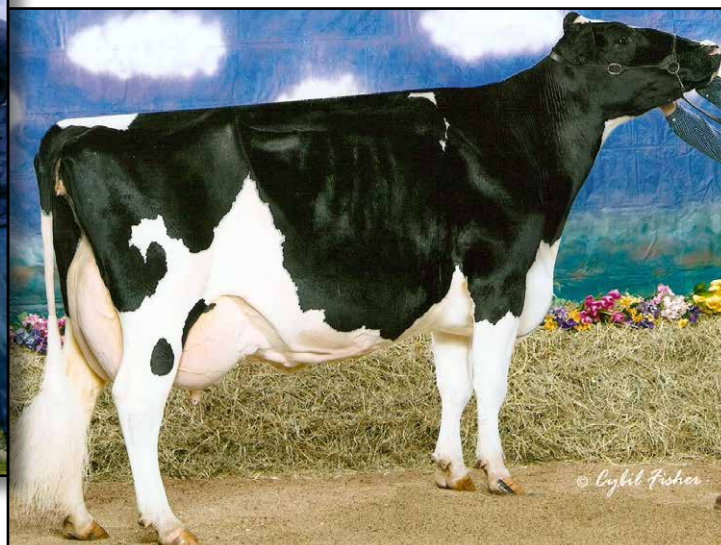
9-10 2x 365d 38810 3.6 1383 2.9 1140

Life: 3634d 280980 3.6 9997 3.1 8625





**SRF-ZBW STORM LEGACY-ET EX-90 EX-MS  
DAM OF LOT 25**



**STONE-RISE DURHAM LIZZY EX-95 3E GMD DOM  
2ND DAM OF LOT 25**

**25**

## FIVE #1 EMBRYOS

- *Worldwide Export Available*

### Holstein Plaza Contacts:

Steve Mower +1 240-520-5906  
Jennifer Dingbaum +1 320-250-2412

### Sonnek GC Corvette-ET

71391400 \*TV \*TL \*TY \*TD  
PTA +640M +32F +25P 75%R 12/13  
PTA +1.4PL 2.60SCS -0.4DPR  
PTA +4.11T +3.03UDC +3.88FLC 73%R  
GTPI +2121G

### SRF-ZBW Storm Legacy-ET

62535784 Excellent-90 EX-MS @ 3-05  
3-04 2x 305d 25060 4.2 1056 3.5 881 inc.  
2-00 2x 365d 26080 3.6 932 3.4 892

*Full sister to Storm Legacy*

### SRF-ZBW Storm Lucky EX-94

2-00 2x 310d 22606 3.3 752 3.3 737  
• 2nd Jr 2-Yr-Old, NY Int'l Spring Show

### Mr Chassity Gold Chip-ET

140145553 100%RHA-NA \*TR \*TV \*TL  
PTA +546M +32F +9P 84%R 12/13  
PTA +3.64T +3.01UDC +2.93FLC  
GTPI +2045G

### Sonnek Damion Charlie-ET

138545776 Excellent-92-USA  
3-04 2x 365d 26240 4.0 1050 3.5 992

### Comestar Stormatic-ET

6947936C EX-CAN GM 2/07 \*TV \*TL  
PTA +346M -6F +2P 99%R 12/13  
PTA +1.71T +.73UDC +2.48FLC  
GTPI +1450G

### Stone-Rise Durham Lizzy

131417106 Excellent-95 3E GMD DOM  
6-00 2x 365d 50470 3.4 1558 3.5 1774  
Life: 2213d 229970 3.3 7675 3.4 7709  
• 10 EX daughters, including 4 EX-92 and higher  
• HHM All-American 125,000 lb Cow 2007  
• All-NY Aged Cow 2007  
• 3rd 125,000 lb Cow, Int'l Holstein 2007  
• Genetic Merit Winner, Int'l Holstein 2007  
• 1st Aged Cow & BU, NY State Fair 2007  
• All-NY 4-Year-Old 2005

### 3rd thru 12th Dams

**Stone-Rise Indy Leah VG-88 VG-MS**  
4-01 2x 353 34590 3.5 1205 3.1 1088  
Life: 2016d 198790 3.5 6919 3.1 6086  
**Stone-Rise Horton Lilith GP-81**  
3-01 2x 346d 26710 3.4 902 3.0 800  
**Stone-Rise Leadman Lex**  
VG-88 GMD DOM  
9-05 2x 365d 35590 4.1 1454 3.4 1193  
**Podonque Bell Ellie GP-82**  
5-06 2x 365d 28110 3.6 1003 3.1 881  
**Podonque Pete Aaggie Ella VG-86**  
3-06 2x 331d 18780 3.8 705 3.1 525  
**Podonque Comet Aaggie Rena EX-90**  
7-03 2x 294d 21740 3.3 726 3.1 672  
**Podonque Bootmaker Aaggie Nora**  
EX-90 GMD  
6-09 2x 320d 22020 3.5 764 3.1 680  
**Podonque X Aaggie Gloria-TW VG-86**  
10-0 2x 365d 15588 4.3 665  
**Podonque Burke Aaggie Palma VG-88**  
11-0 2x 305d 20480 3.5 725  
**P Medel Aaggie Lucille EX-96**



**REGANCREST S LIZETT-ET EX-90 DOM**  
DAM OF LOT 26

**26**

## FOUR #1 EMBRYOS

• *Worldwide Export Available*

### **Holstein Plaza Contacts:**

Steve Mower +1 240-520-5906

Jennifer Dingbaum +1 320-250-2412

### **Larcrest Certify**

57187882\*TV\*TL\*TY\*TD

PTA +614M +76F +38P 75%R 12/13

PTA +5.4PL 2.59SCS +2.0DPR

PTA +2.33T +2.24UDC +1.44FLC 74%R

GTPI +2308G

### **Regancrest S Lizett-ET**

62496977 Excellent-90 VEVVE DOM

4-01 2x 364d 26980 3.9 1047 3.3 886

1-11 2x 365d 23600 4.0 933 3.4 799

3-02 2x 297d 20380 4.0 821 3.2 655

### **Amighetti Numero Uno-ET**

ITA 17990915143 \*TV\*TL\*TY

PTA +858M +80F +39P 77%R 12/13

PTA +2.88T +2.84UDC +1.93FLC 77%R

GTPI +2435G

### **Larcrest Crimson**

53452457 Excellent-91 2E DOM

2-02 3x 365d 34110 3.2 1095 3.1 1066

### **Picston Shottle-ET**

GBR 598172 EX-95 GM 12/11 \*TV\*TL\*TY

PTA +945M +47F +25P 99%R 12/13

PTA +2.32T +1.87UDC +1.60FLC

GTPI +1951G

### **Teramis Durham Lifesaver-TW**

134971339 Excellent-90 EEVVE

2-05 2x 365d 29340 4.2 1237 3.5 1023

3-08 2x 329d 28690 3.7 1063 3.4 985

### **3rd thru 5th Dams**

**Teramis Sexation Lady** EX-91 EX-MS 3E

10-0 2x 365d 26410 3.6 952 3.1 831

Life: 3407d 198500 3.7 7297 3.3 6621

**Teramis Blackstar Life** EX-92 EEEEE 2E

4-06 2x 365d 27230 3.9 1056 3.0 807

Life: 1754d 111059 3.7 4159 3.1 3415

**Teramis Chief Mark Loon** VG-85

4-11 2x 305d 25430 3.3 851 3.0 761



**BREMER ACTIVE CHARM-ET VG-86 VG-MS @ 2-06  
DAM OF LOT 27**



## FIVE #1 EMBRYOS

- *Worldwide Export Available*

### **Holstein Plaza Contacts:**

Steve Mower +1 240-520-5906  
Jennifer Dingbaum +1 320-250-2412

### **Cookiecutter Petron Halogen**

3008710387 \*TV \*TL \*TY \*TD  
PTA +974M +57F +39P 73%R 12/13  
PTA +8.3PL 2.40SCS +3.6DPR  
PTA +2.81T +3.11UDC +1.12FLC 72%R  
GTPI +2507G

### **Bremer Active Charm-ET**

66088957 Very Good-86 VG-MS @ 2-06  
GTPI+1834 +187M +51F +17P +1.02T  
2-01 2x 365d 24760 4.7 1163 3.7 917

### **Welcome Super Petrone-ET**

69207641 \*TR \*TV \*TL \*TY \*TD  
PTA +984M +51F +28P 76%R 12/13  
PTA +2.33T +2.29UDC +1.56FLC 76%R  
GTPI +2281G

### **Cookiecutter MOM Halo-ET**

3007069733 Very Good-88 EX-MS @ 2-09  
2-00 3x 365d 35410 5.2 1832 3.5 1241  
2-03 2x 159d 14324 4.3 611 3.2 454

### **Alpag Iron Active-ET**

ITA 6920009167 GM 8/11 \*TV \*TL  
PTA +226M +43F +13P 99%R 12/13  
PTA +0.65T +.29UDC +.11FLC 99%R  
GTPI +1785G

### **Solid-Gold Cheesecake-ET**

60697340 Very Good-88 EX-MS DOM  
5-07 2x 365d 40300 4.6 1854 3.4 1384  
Life: 1476d 136230 4.3 5804 3.4 4628

- *Sired by Comestar Outside-ET*

• *Sons in AI*

*Full brother to Cheesecake*

**Solid-Gold Colby-ET**

*Maternal sister to Lot 27*

### **NH Mogul Champ**

- *One of the highest Outcross Heifers in Europe*
- *Sold for €26,500 Eurogenes Summer Sale*

### **3rd thru 5th Dams**

#### **Ms Solid-Gold Rud Cherry-ET**

VG-89 EVVVE @ 3-07  
2-04 3x 365d 40010 3.5 1382 3.0 1202  
Life: 1499d 124090 3.7 4532 3.1 3907

#### **Whiteleather Conquest 385**

EX-93 EEEEE DOM  
4-01 3x 365d 36200 3.9 1398 3.0 1100  
Life: 1087d 101916 3.5 3586 3.0 3036

#### **Whiteleather Rex SWD Val 2079 EX-91 2E**

6-00 2x 365d 30400 4.8 1470 3.0 924  
Life: 2130d 133480 4.2 5548 3.2 4246



**BUTLerview DADDY SHENE-ET**  
DAM OF LOT 28



**VISION-GEN SH SHO A12024-ET VG-85 VG-MS**  
2ND DAM OF LOT 28

**28**

## FOUR #1 EMBRYOS

• Worldwide Export Available

### Holstein Plaza Contacts:

Steve Mower +1 240-520-5906

Jennifer Dingbaum +1 320-250-2412



### De-Su Distinction 11130-ET (SEXED)

70625882 \*TR \*TV \*L \*TY \*TD  
PTA +1518M +89F +55P 75%R 12/13  
PTA +802NM\$ +5.6PL 2.83SCS +1.1DPR  
PTA +2.83T +2.45UDC +1.13FLC 74%R  
GTPI +2383G

### Butlerview Daddy Shene-ET

72127369 Born: December 18, 2012  
GTPI+2179 +1195M +33F +37P +3.31T

Maternal sister by Numero Uno

### Butlerview Uno Sho-Off-ET

GTPI+2448 +539M +60F +32P +3.44T

### Ladys-Manor PL Shamrock-ET

68977120 Very Good-85 \*TR \*TV \*TL \*TY  
PTA +1649M +59F +40P 94%R 12/13  
PTA +2.79T +2.25UDC +1.18FLC 86%R  
GTPI +2227G

### Clear-Echo M-O-M 2150-ET

68669750 VG-87 EX-MS @ 2-06 DOM  
2-02 2x 183d 18678 3.9 728 3.1 579 inc.

### Ronelee SSI O Daddy-ET

70119251 VG-86 \*TV \*TL \*TY \*TD  
PTA +1935M +43F +55P 78%R 12/13  
PTA +3.10T +2.18UDC +1.54FLC  
GTPI +2212G

### Vision-Gen Sh Sho A12024-ET

69517360 Very Good-85 VG-MS @ 2-11  
GTPI+2043 +40M +30F +10P +3.33T  
• Full sister to Vision-Gen Sh Sho A12037  
• Already has a GTPI+2448 Uno daughter

### 3rd thru 6th Dams

**KY-Blue GW Dana-ET** EX-91 EX-MS

4-01 2x 185 16881 4.5 765 3.2 540

**BVK Outside Diana-ET** EX-92 2E DOM

5-01 2x 365d 31920 3.5 1129 3.2 1034

Life: 1544d 107400 3.5 3708 3.3 3549

**Ms Kingstead Chief Adeen-ET**

EX-94 2E DOM

3-05 2x 310d 30180 4.0 1209 3.4 1020

Life: 1382d 100760 4.0 4010 3.4 3458

• 2x Member All-American Produce

• Nom All-American Jr 3-Yr Old

• Nom All-American 4-Yr Old

• Dam of 16 VG and 11 EX Offspring

**C Aitkenbrae Starbuck Ada** EX-94 2E DOM

13-8 2x 365d 25150 3.0 764 3.2 796

2-05 2x 362d 25000 3.6 908 3.2 798

• All-American Produce of Dam 2000

• 1st Eastern Nat'l 3-Yr Old & Grand Ch 1990



**MS EMILY EMARION**  
DAM OF LOT 29



**TRAMILDA-N BAXTER EMILY-ET VG-85**  
2ND DAM OF LOT 29

29

## FIVE #1 EMBRYOS

• Worldwide Export Available

### Holstein Plaza Contacts:

Steve Mower +1 240-520-5906

Jennifer Dingbaum +1 320-250-2412

### Richmond-FD El Bombero-ET

71637328 \*TY

PTA +1925M +92F +58P 73%R 12/13

PTA +6.8PL 2.53SCS +0.5DPR

PTA +3.18T +2.69UDC +2.31FLC 72%R

GTPI +2532G / DGV-GLPI +3412

### Ms Emily Emarion-ET \*TL \*TD

72406164

Born: January 8, 2013

GTPI+2301+1426M +87F +50P +3.38T

### Amighetti Numero Uno-ET

ITA 17990915143 \*TV \*TL \*TY

PTA +858M +80F +39P 77%R 12/13

PTA +2.88T +2.84UDC +1.93FLC 77%R

GTPI +2435G

### Richmond-FD S Barbara-ET

69305043 Very Good-87-2YR

### Seagull-Bay Supersire-ET

69981349 \*TV \*TL \*TY \*TD

PTA +2342M +107F +75P 76%R 12/13

PTA +2.38T +1.66UDC +1.22FLC 75%R

GTPI +2413G

### Tramilda-N Baxter Emily

139232811 VG-85-2YR-CAN VG-MS

GTPI+2177 +1140M +67F +33P +2.20T

2-05 2x 282d 30946 4.2 1287 3.2 1001

- Full sister to Tramilda-N Escalade
- Dam to Emmett, Epic and Highway

### 3rd thru 13th Dams

**Wabash-Way Evett-ET VG-86 DOM**

2-02 2x 365d 34187 4.9 1660 3.1 1046

**Crockett-Acres Elita-ET VG-87 DOM**

2-02 2x 365d 39010 3.8 1480 3.5 1383

**Crockett -Acres Mtot Elly-ET**

EX-90 EX-MS GMD DOM

6-04 2x 283d 38840 3.3 1286 3.4 1302

**Wauregan Rudolph Ellymae-ET EX-90**

4-06 3x 365d 40210 3.6 1455 3.4 1375

**Whittier-Farms Lead Mae-ET**

EX-95 3E GMD

8-07 3x 357d 41270 4.8 1962 3.5 1440

Life: 1613d 126960 4.3 5473 3.6 4597

**Raymau Bstar Monica-ET VG-89 DOM**

2-01 2x 146d 12280 3.8 471 3.3 405

**Juniper Jason Maria VG-87 EX-MS DOM**

2-03 2x 365d 20260 4.3 868 3.6 736

**JDM-Pride Valiant Maggie**

EX-91 GMD DOM

6-00 2x 365d 35540 4.1 1441 3.3 1186

Life: 1666d 119120 4.2 5002 3.6 4281

**La-Ko-Land Penstate Sadie**

VG-87 GMD DOM

8-03 2x 336d 24420 3.3 818 3.2 781

Life: 2480d 166909 3.5 5732 3.2 2854

**La-Ko-Land Bootmaker Sally VG-86**

5-10 2x 365d 24450 4.1 1010

**La-Ko-Land Monitor Nancy EX-90**

10-11 3x 320d 19670 3.1 619

Life: 2381d 145490 3.0 4442



**MS EMILY EGLANTINE-ET**  
DAM OF LOT 30



**TRAMILDA-N BAXTER EMILY VG-85-USA 2YR**  
2ND DAM OF LOT 30

**30**

## FIVE #1 EMBRYOS

- Worldwide Shipment Available

### Holstein Plaza Contacts:

Steve Mower +1 240-520-5906

Jennifer Dingbaum +1 320-250-2412



### Butz-Hill Megasire-ET (SEXED)

71088720 \*TV \*TL \*TY \*TD

PTA +1272M +79F +58P 73%R 12/13

PTA +5.4PL 2.70SCS +1.9DPR

PTA +2.98T +2.76UDC +2.73FLC 72%R

GTPI +2512G / DGV-GLPI +3507

### Ms Emily Eglantine-ET

71994202

Born: August 14, 2012

GTPI+2205 +808M +71F +34P +1.55T

### Seagull-Bay Supersire-ET

69981349 \*TV \*TL \*TY \*TD

PTA +2342M +107F +75P 76%R 12/13

PTA +2.38T +1.66UDC +1.22FLC 75%R

GTPI +2413G

### Morsan Man D Missy-ET

69320673 Very Good-85

2-04 2x 305d 20450 5.5 1124 3.7 760

### Air-Osa Excel altaAirnet

68769438 \*TV \*TL \*TY \*TD

PTA +1189M +45F +46P 77%R 12/13

PTA +2.01T +1.62UDC +0.75FLC 76%R

GTPI+2106G

### Tramilda-N Baxter Emily

139232811 VG-85-2YR-CAN VG-MS

GTPI+2177 +1140M +67F +33P +2.20T

2-05 2x 282d 30946 4.2 1287 3.2 1001

• Full sister to Tramilda-N Escalade

• Dam to Emmett, Epic and Highway

### 3rd thru 13th Dams

**Wabash-Way Evett-ET VG-86 DOM**

2-02 2x 365d 34187 4.9 1660 3.1 1046

**Crockett-Acres Elita-ET VG-87 DOM**

2-02 2x 365d 39010 3.8 1480 3.5 1383

**Crockett -Acres Mtot Elly-ET**

EX-90 EX-MS GMD DOM

6-04 2x 283d 38840 3.3 1286 3.4 1302

**Wauregan Rudolph Ellymae-ET EX-90**

4-06 3x 365d 40210 3.6 1455 3.4 1375

**Whittier-Farms Lead Mae-ET**

EX-95 3E GMD

8-07 3x 357d 41270 4.8 1962 3.5 1440

Life: 1613d 126960 4.3 5473 3.6 4597

**Raymau Bstar Monica-ET VG-89 DOM**

2-01 2x 146d 12280 3.8 471 3.3 405

**Juniper Jason Maria VG-87 EX-MS DOM**

2-03 2x 365d 20260 4.3 868 3.6 736

**JDM-Pride Valiant Maggie**

EX-91 GMD DOM

6-00 2x 365d 35540 4.1 1441 3.3 1186

Life: 1666d 119120 4.2 5002 3.6 4281

**La-Ko-Land Penstate Sadie**

VG-87 GMD DOM

8-03 2x 336d 24420 3.3 818 3.2 781

Life: 2480d 166909 3.5 5732 3.2 2854

**La-Ko-Land Bootmaker Sally VG-86**

5-10 2x 365d 24450 4.1 1010

**La-Ko-Land Monitor Nancy EX-90**

10-11 3x 320d 19670 3.1 619

Life: 2381d 145490 3.0 4442



**EDG DOMINIQUE 2173-ET**  
DAM OF LOT 31



**LADYS-MANOR ALLANAS DORA EX-93 DOM**  
3RD DAM OF LOT 31

**31**

## TWO #1 EMBRYOS

• Worldwide Export Available

### Holstein Plaza Contacts:

Steve Mower +1 240-520-5906

Jennifer Dingbaum +1 320-250-2412

**SEXED**  
semen

### Butz-Hill Megasire-ET (SEXED)

71088720 \*TV \*TL \*TY \*TD

PTA +1272M +79F +58P 73%R 12/13

PTA +5.4PL 2.70SCS +1.9DPR

PTA +2.98T +2.76UDC +2.73FLC 72%R

GTPI +2512G / DGV-GLPI +3507

### EDG Dominique 2173-ET

72437720 Born: April 13, 2013

GTPI+2273 +1211M +66F +38P +3.50T

### Seagull-Bay Supersire-ET

69981349 \*TV \*TL \*TY \*TD

PTA +2342M +107F +75P 76%R 12/13

PTA +2.38T +1.66UDC +1.22FLC 75%R

GTPI +2413G

### Morsan Man D Missy-ET

69320673 Very Good-85

2-04 2x 305d 20450 5.5 1124 3.7 760

### S-S-I Domain Lithium-ET

3004672704 \*TR \*TV \*TL \*TY \*TD

PTA +1064M +39F +37P 76%R 12/13

PTA +2.13T +6.1PL 2.69SCS +1.2DPR

GTPI +2292G

### Ladys-Manor Dominique-ET

70189445

GTPI+2230 +899M +65F +44P +3.80T

### 3rd thru 13th Dams

**Ladys-Manor Allanas Dora EX-93 DOM**

3-07 2x 365d 40640 4.4 1780 3.3 1360

**Ms Durchan Lady Allana EX-95 2E EEEEE**

3-07 2x 365d 40850 4.4 1793 3.3 1349

Life: 1351d 126420 4.2 5362 3.4 4305

• All-American Sr. Milking Yrlg 2007

• 1st Sr. Milking Yrlg World Dairy Expo 2007

• 1st Sr. Milking Yrlg Eastern Fall Nat 2007

**Coldsprings Dur Chan 109 EX-95 2E DOM**

6-04 2x 365d 41850 4.3 1784 3.3 1371

Life: 1423d 130510 3.6 4695 3.3 5064

• Res All-American Aged Cow 2007

• HM All-American 5-Year-Old 2005

• All-American 4-Year-Old 2004

**C Bermaska Starbuck Chancel VG-89 DOM**

2-07 2x 365d 28400 4.3 1230 3.5 999

• All-American Senior 2-Year-Old 1992

• All-American Senior Yearling Heifer 1991

**Donaco Enhancer Cheryl VG-87-CAN**

7-02 2x 305d 21462 4.8 1021 3.5 743

**Danaco Apache Chanda VG-86**

4-11 2x 322d 19160 4.3 829 3.5 670

**Danaco Elevation Candace VG-86**

Life: 2564d 185599 3.7 6834

**Davis-Farm Maple Cindy EX-90 GMD**

5-03 2x 365d 23849 3.7 871

**Davis-Farm Heritage Candace EX-90 EEEV**

2-06 2x 305d 12060 3.7 445

**Davis-Farm Model Lena VG-85**

4-02 2x 305d 14060 4.1 582

**Maview Candace Pilot EX-91 VEEE**

Life: 3139d 151504 3.9 5825



**PIERCE-VALE SHOT REPLAY-ET EX-92 EX-MS  
DAM OF LOT 32**

**32**

### FIVE #1 EMBRYOS

• Worldwide Export Available

#### Holstein Plaza Contacts:

Steve Mower +1 240-520-5906

Jennifer Dingbaum +1 320-250-2412

#### Maple-Downs-I G W Atwood-ET

8956379C Very Good-87 \*TV \*TL \*TY \*TD  
PTA +261M +48F +12P 99%R 12/13  
PTA +213NM\$ +0.9PL 2.94SCS -2.2DPR  
PTA +4.66T +3.47UDC +3.85FLC 99%R  
GTPI +1932G

#### Pierce-Vale Shot Replay-ET

139394524 Excellent-92 EEEEE  
3-03 2x 365d 34970 3.5 1223 3.3 1137  
2-01 2x 365d 29240 3.4 1008 3.3 959

#### Braedale Goldwyn

CAN 10705608 GP-CAN EX'05 \*TV \*TL  
PTA -45M +29F +12P 99%R 12/13  
PTA +2.82T +2.47UDC +2.36FLC  
GTPI +1876G

#### MD-Delight Durham Atlee-ET

131704103 Excellent-92 EEEEE DOM  
3-11 2x 365d 38290 5.5 2091 3.1 1177  
• All-American Senior 3-Year-Old 2005

#### Picston Shottle-ET

GBR 598172 EX-95 GM 12/11 \*TV \*TL \*TY  
PTA +945M +47F +25P 99%R 12/13  
PTA +2.32T +1.87UDC +1.60FLC  
GTPI +1951G

#### Pierce-Vale Durham Rocket

131947755 Excellent-92 EEEVE 3E \*CV  
4-08 2x 365d 36790 3.3 1227 3.3 1198  
6-05 2x 365d 36370 3.1 1120 3.0 1104  
3-04 2x 365d 32590 3.2 1050 3.3 1074  
2-01 2x 365d 23660 3.2 762 3.3 785  
Life: 1937d 151830 3.3 4961 3.3 4950

#### 3rd thru 7th Dams

##### Pierce-Vale Airliner Rosie VG-85

3-07 2x 365d 29250 3.8 1098 3.0 889  
Life: 2127d 147950 3.5 5180 3.1 4616

##### Pierce-Vale Emory Rainbow EX-90 2E

6-05 2x 365d 39160 3.0 1170 2.8 1116  
Life: 1862d 152090 2.9 4463 2.9 4420

##### Pierce-Vale Elvin Reseda VG-85

6-10 2x 365d 27370 3.0 812 3.1 846  
Life: 1973d 127370 3.3 4227 3.2 4052

##### Pierce-Vale Renee EX-93 3E DOM

6-10 2x 365d 27230 3.7 1014 3.2 869  
Life: 2766d 173120 3.6 6314 3.3 5653

##### Pierce-Vale Reva EX-93 4E GMD DOM

5-07 2x 305d 26590 4.0 1055 3.2 838  
Life: 3558d 232590 4.1 9587 3.4 7865



# TERMS and CONDITIONS

## GENERAL:

- These terms are valid for all agreements made through this sale.
- The organization of the sale is done by Holstein Plaza, part of AMS Genetics International LLC.
- The party, which offers embryos in this sale will be named after this as the “seller” and the party who buys through this sale and gets the sale item assigned, will be hereinafter identified as the “buyer”.
- The organization will only act as an intermediary in the realization from a (purchase) agreement between seller and buyer.

## HOW DOES THE SALE WORK:

- All embryos sell with reasonable starting bid.
- The bid price is the per embryo price. If a lot has four embryos and the price is \$500.00 that means the lot price is \$2,000.00.
- When you place a bid, you agree to pay for the item if you're the winning bidder.
- All embryos are froze DT unless otherwise noted in catalog.
- All embryos are available for immediate shipment unless otherwise noted in catalog.
- There are two ways of placing a bid: internet ([www.holstein-plaza.com](http://www.holstein-plaza.com)) or via one of the listed Holstein Plaza contact persons.
- The bids are made in US dollars.
- When you place a bid, you enter the maximum amount you're willing to pay for the item. The other bidders and the sale organization will not be able to see your maximum bid. Through this Proxy bidding system, the Holstein Plaza auction system will increase your bid to the next lowest price when another user bids on the same item. The proxy bidding process continues until your maximum bid amount is reached or the auction ends. Every bidder is bound to his bid.
- The sale is using the popcorn bid system/5-minute rule ([click here for more information on the popcorn bid system/5-minute rule](#)). Until that moment bids will be accepted.
- All risks of the embryos are the responsibility of the buyer once the embryos are delivered to the buyer.
- The transportation of embryos from the seller to the buyer will take place as soon as possible after the sale, but not before complete payment as invoiced from AMS Genetics is received from the successful buyer.
- AMS Genetics will coordinate the paperwork and transfers with Holstein.

## PAYMENT:

- Payment for all purchases is due within ten days of sale.
- Sale invoices will be sent via e-mail or fax following the conclusion of the sale.
- Embryo release forms are issued once proper payment has been received and processed by AMS Genetics.
- Payment will not be released to the seller until AMS Genetics has received proper transfer paperwork.
- Holstein Plaza charges a buyer's commission of \$50 per embryo to include all necessary paperwork; note, this fee does not include shipping.
- International buyers are responsible for shipping the embryos. Buyers will be contacted after the sale about their wishes and requirements for exporting the embryos.
- All embryos needing international shipment will be charged a flat fee of \$150 per lot for export documentation.
- AMS Genetics can handle export and shipping. In case export is being done through AMS Genetics an additional \$50 export fee per embryo will be charged. This flat fee does not cover transport. Buyer should arrange shipping within 60 days of the ending sale date.

## EXCLUDING LIABILITY:

- The organization cannot be held responsible for errors on the internet site, sale catalog or in the advertisements.
- The organization cannot be held responsible for visual or non visual regardless the size or nature of such defect of the sold item.
- The organization does not take any responsibility for damage to persons or cases, which has arisen because of or connected to the sale.
- The cow indexes mentioned therein have been calculated or converted by the herdbook in the country the donor cow is housed in accordance with the current methods. All official pedigrees of sale animals can be seen.
- All frozen embryos are rated first class by official and registered ET veterinarians unless stated different on the website. In case embryos sold as first class after thawing turn out as class two or lower and not end in a pregnancy, the seller will be responsible for a refund, either in the form of an embryo with similar pedigree value or the purchase amount for the embryo. It is of vital importance that any claim is accompanied with an official statement in English from a recognized ET veterinarian. This should be sent to Holstein Plaza.
- Every bidder and seller is held to conform to the auction conditions. The act of bidding and consigning implicates knowledge and acceptance of these conditions.
- The organization can never be held responsible in case the embryos cannot be exported no matter what reason.