

GLEN-TOCTIN SUPER LAVENA VG-87-2YR DOM  
DAM OF LOT 1



GLEN-TOCTIN SHOTTLE LIVA EX-91 EX-MS  
2ND DAM OF LOT 1



## FIVE #1 IVF EMBRYOS

• Export only to the EU and China, no U.S. & Canada Shipment

### Holstein Plaza Contacts:

Steve Mower +1 240-520-5906

Jennifer Dingbaum +1 320-250-2412

### Ladys-Manor Olympian \*RC

71592946 \*TV \*TL \*TY \*TD  
PTA +1445M +41F +52P 72%R 8/13  
PTA +746NM\$ +5.8PL 2.57SCS +1.9DPR  
PTA +3.22T +3.60UDC +2.23FLC 71%R  
GTPI +2437G

### Glen-Toctin Super Lavena

140738432 Very Good-87-2YR 88-MS DOM  
GTPI+2218 +1199M +30F +41P +2.73T  
Dam of

Ladys-Manor Graf La-La GTPI+2502

Ladys-Manor Graf La-Bron GTPI+2443

• Grafeeti son at ABS Global

Full sister to Glen-Toctin Super Large at ABS

### Hunsberger Alchemy-ET \*RC

69080973 \*TY  
PTA +968M +32F +43P 76%R 8/13  
PTA +2.90T +2.82UDC +1.45FLC  
GTPI +2184G

### Ladys-Manor Dorcy Oda

69547657 Very Good-88 EX-MS @ 2-11  
• #1 GTPI Cow in the Breed!

### Charlesdale Superstition-ET

62065919 \*TV \*TL  
PTA +1393M +3F +41P 99%R 8/13  
PTA +1.88T +1.89UDC +1.15FLC 99%R  
GTPI +2128G

### Glen-Toctin Shottle Liva-ET

13724018 Excellent-91 EX-MS  
1-11 2x 305d 24770 4.5 1103 3.5 858  
3-00 2x 365d 41140 4.4 1810 3.3 1343  
• Same family as Lithium

### 3rd thru 8th Dams

#### Glen-Toctin Aaron Lilith

EX-90 EX-MS GMD DOM

2-05 2x 365d 30180 5.6 1684 3.6 1082

#### Unicorn Celsius Lei VG-86 GMD DOM

2-00 2x 365d 27840 4.5 1240 3.6 1001

#### Unicorn Blackstar Lilly

VG-87 VG-MS GMD DOM

2-00 2x 365d 29150 4.0 1157 3.3 974

#### Catactin Melwood Loni-ET VG-87 GMD

2-00 2x 365d 26760 4.3 1162

#### Unicorn Lucky Lyn VG-85 GMD

5-06 2x 365d 37580 3.5 1320

#### Unicorn Chairman Lynn EX-90 GMD

7-02 2x 365d 36990 3.8 1416





GEN-I-BEQ SNOWMAN SUMMER VG-85-2YR  
DAM OF LOT 2



SNOWBIZ LADD P SUNSHINE \*RC \*PO • GTPI+2425  
MATERNAL SISTER TO LOT 2

2

## FIVE #1 EMBRYOS

• Worldwide Export Available

### Holstein Plaza Contacts:

Steve Mower +1 240-520-5906

Jennifer Dingbaum +1 320-250-2412

### Ladys-Manor Olympian \*RC

71592946 \*TV \*TL \*TY \*TD  
PTA +1445M +41F +52P 72%R 8/13  
PTA +746NM\$ +5.8PL 2.57SCS +1.9DPR  
PTA +3.22T +3.60UDC +2.23FLC 71%R  
GTPI +2437G

### Gen-I-Beq Snowman Summer \*RC

106807371C Very Good-85-2YR-CAN VG-MS  
GTPI+2270 +1972M +77F +60P +2.77T  
proj.305d 22,148 6.4 1407 3.0 666  
• *Sympatico son to Semex*

### Daughters:

#### Snowbiz Ladd P Sunshine \*RC \*PO

GTPI+2425 +1076M +74F +53P  
• #1 GTPI \*RC \*PO in the World  
• Sold for \$200,000 on the Snowbiz Sale  
**Snowbiz Sympatico Sofia-Red**  
GTPI+2458 +1935 +83F +64P +3.17T  
• #2 GTPI Red Heifer in the World  
**Snowbiz Sympatico Shae-Red**  
GTPI+2379 +2615M +80F +68P +3.12T  
• #3 GTPI Red Heifer in the World

### Hunsberger Alchemy-ET \*RC

69080973 \*TY  
PTA +968M +32F +43P 76%R 8/13  
PTA +2.90T +2.82UDC +1.45FLC  
GTPI +2184G

### Ladys-Manor Dorcy Oda

69547657 Very Good-88 EX-MS @ 2-11  
• #1 GTPI Cow in the Breed!

### Flevo Genetics Snowman

388965513 \*TV \*TL  
PTA +2249M +75F +65P 91%R 8/13  
PTA +2.14T +1.64UDC +2.58FLC 89%R  
GTPI +2144G

### Gen-I-Beq Bolton Secretly \*RC

104862616C Very Good-87-CAN 1\*  
2-01 2x 365d 30474 4.4 1327 3.4 1043  
5-02 2x 174d 17427 4.2 732 2.9 507  
• 1 Superior Lactation

### 3rd thru 11th Dams

#### Gen-I-Beq Goldwyn Secret VG-87-CAN 7\*

5-05 2x 365d 30573 4.5 1389 3.4 1038

#### Gen-I-Beq Durham Sherry VG-87-CAN 8\*

5-02 2x 365d 40036 3.9 1574 3.2 1268

#### Glen Drummond Splendor

VG-86-2YR-CAN 37\*

4-10 2x 314d 26510 4.2 1124 3.2 840

#### Glen Drummond Aero Flower

VG-88-CAN 18\*

2-03 2x 326d 25622 4.0 1032 3.4 882

#### Glen Drummond Shower EX-CAN 14\*

4-10 2x 365d 28583 4.8 1380 3.6 1016

#### Glen Drummond S C Jo Beth

EX-2E-CAN 7\*

Life (6 Lacs): 141637 4.2 5994 3.2 3593

• *Grand Champion Brant-Wentworth 1984*

#### Glen Drummond Matt Beth VG-85 4\*

11-10 2x 365d 25038 3.7 935

Life (5 Lacs): 105953 4.1 4295

#### Glen Drummond Marquis Beth VG-CAN

Life (8 Lacs): 112688 4.2 4766

#### Ferglynn Rag Apple Bertha VG-CAN 3\*

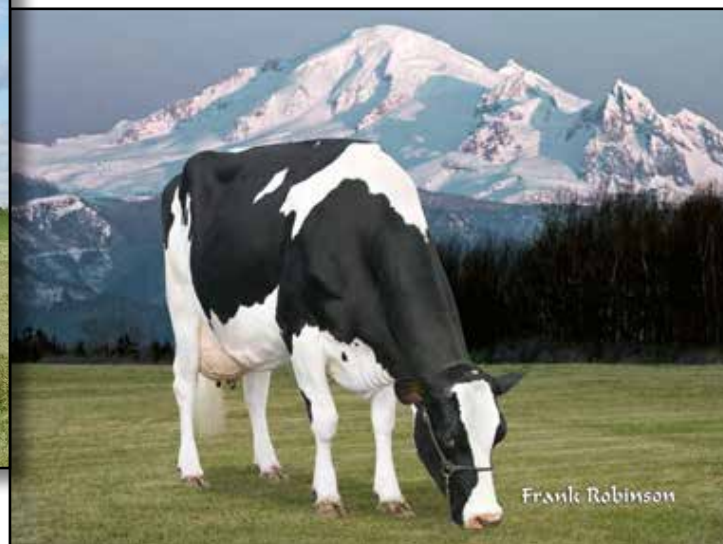
7-00 2x 365d 27796 4.7 1303

Life (9 Lacs): 208857 4.0 8344





**RONELEE BOLIVER DREARY VG-86 DOM**  
2ND DAM OF LOT 3



**RONELEE OUTSIDE DABBLE-ET EX-91 2E GMD DOM**  
3RD DAM OF LOT 3

3

## FOUR #1 EMBRYOS

• Worldwide Export Available

### Holstein Plaza Contacts:

Steve Mower +1 240-520-5906

Jennifer Dingbaum +1 320-250-2412

### Clear-Echo Lexor Racer-ET

71974211 \*TV \*TL \*TY

PTA +1655M +70F +64P 72%R 8/13

PTA +861NM\$ +5.4PL 2.59SCS +1.5DPR

PTA +2.94T +3.08UDC +2.04FLC 71%R

GTPI +2497G / gRZG+163

### Ms Dreary Dreamy-ET

72091650

Born: September 21, 2012

GTPI+2324 +908M +86F +44P +2.51T

• Nice heifer, will be pictured next week

### Generations Lexor

11098658 \*TY \*TL

PTA +1512M +94F +75P 77%R 8/13

PTA +2.65T +1.88UDC +2.27FLC

GTPI +2335G

### Clear-Echo Observer 2280-ET

68669880 Good Plus-84

2-01 3x 280d 22539 3.7 823 3.1 695

### Amighetti Numero Uno-ET

ITA 17990915143 \*TV \*TL \*TY

PTA +971M +88F +46P 77%R 8/13

PTA +2.92T +2.69UDC +1.92FLC 76%R

GTPI +2462G

### Ronelee Boliver Dreary

139531796 Very Good-86 @ 3YR DOM

GTPI+2098 +1149M +57F +43P +2.18T

2-04 2x 305d 23999 3.8 915 3.4 822

• Maternal sister to Domain

• Dam to Deligence & Deligent @ TAG

• Dam to several high testing daughters

### 3rd thru 8th Dams

#### Ronelee Outside Dabble

EX-91 2E GMD DOM

5-03 3x 365d 44530 3.6 1612 3.0 1313

Life: 1418d 146440 3.6 5215 3.2 4653

#### Ronelee Rudolph Dimple

EX-93 EEEEE 2E DOM

5-08 3x 365d 45290 3.7 1713 3.1 1428

Life: 1582d 164010 3.6 5900 3.2 5284

#### Select Mark Dolly

EX-95 EEEEE 4E GMD DOM

6-07 3x 365d 45870 4.0 1846 3.1 1431

Life: 3295d 276300 3.6 9992 3.2 8964

#### Select Southwind Dinah EX-91 EEEEE 2E

5-11 3x 365d 30080 3.7 1124 3.3 981

Life: 1505d 103810 3.9 4010 3.3 3456

#### Select Mars Tony Diana VG-86 VG-MS

3-04 2x 365d 26200 4.2 1112 3.5 916

#### Dinah Select Wayne Dixie VG-85

3-07 2x 305d 23460 4.0 935 3.4 789





LADYS-MANOR MG SUZANNE-ET  
2ND DAM OF LOT 4



LADYS-MANOR RUBY D SHAWN EX-90 EX-MS DOM  
2ND DAM OF LOT 4

4

## THREE #1 EMBRYOS

- Worldwide Export Available

### Holstein Plaza Contacts:

Steve Mower +1 240-520-5906

Jennifer Dingbaum +1 320-250-2412

### Clear-Echo Lexor Racer-ET

71974211 \*TV \*TL \*TY

PTA +1655M +70F +64P 72%R 8/13

PTA +861NM\$ +5.4PL 2.59SCS +1.5DPR

PTA +2.94T +3.08UDC +2.04FLC 71%R

GTPI +2497G / gRZG+163

### Ladys-Manor MG Suzanne-ET

71593022

Born: September 2, 2012

GTPI+2350 +874M +88F +40P +3.49T

- Maternal sister to SHAMROCK!

### Generations Lexor

11098658 \*TY \*TL

PTA +1512M +94F +75P 77%R 8/13

PTA +2.65T +1.88UDC +2.27FLC

GTPI +2335G

### Clear-Echo Observer 2280-ET

68669880 Good Plus-84

2-01 3x 280d 22539 3.7 823 3.1 695

### Mountfield SSI Dcy Mogul

3006972816 \*TV \*TL \*TY \*TD

PTA +1384M +80F +50P 77%R 8/13

PTA +3.09T +3.15UDC +3.22FLC 77%R

GTPI+2428G

### Ladys-Manor Ruby D Shawn

62360741 Excellent-90 EX-MS DOM

GTPI+2125 +867M +58F +31P +3.45T

1-10 2x 365d 29690 4.5 1324 3.5 1042

- Dam of the former #1 GTPI sire in the breed, Ladys-Manor PL Shamrock
- Dam to the #2 GTPI Cow on the Locator List, Ladys-Manor Pl Shakira
- Same maternal line is #1 GTPI Cow on Locator List, Ladys-Manor Dorcy Oda

### 3rd thru 10th Dams

#### Ladys-Manor Ruby D-ET

EX-90 EX-MS GMD DOM

4-10 2x 305d 33960 5.4 1825 3.5 1199

#### Ladys-Manor Ruby Jen

EX-94 2E GMD DOM

4-02 2x 365d 46920 4.6 2141 3.2 1514

Life: 1416d 135960 4.6 6282 3.4 4615

#### Ladys-Manor Temp Jeana-ET VG-87

2-01 2x 365d 26850 4.5 1209 3.3 889

#### Ladys-Manor Tempress Jem

EX-91 GMD DOM

3-02 2x 365d 34450 4.7 1602 3.2 1116

#### Ladys-Manor Top Gun Jemini-ET

EX-93 3E GMD DOM

3-11 2x 365d 36080 3.5 1246 3.3 1175

Life: 2089d 150300 3.8 5699 3.2 4781

#### Ladys-Manor Delightful Jem

VG-88 GMD DOM

6-02 2x 365d 31890 4.1 1314 3.1 994

#### Ladys-Manor Donnas Delight VG-85

8-09 2x 365d 30780 3.7 1141 3.1 969

Life: 2392d 166610 3.7 6114

#### Ladys-Manor Nancy Archie EX-90 2E GMD

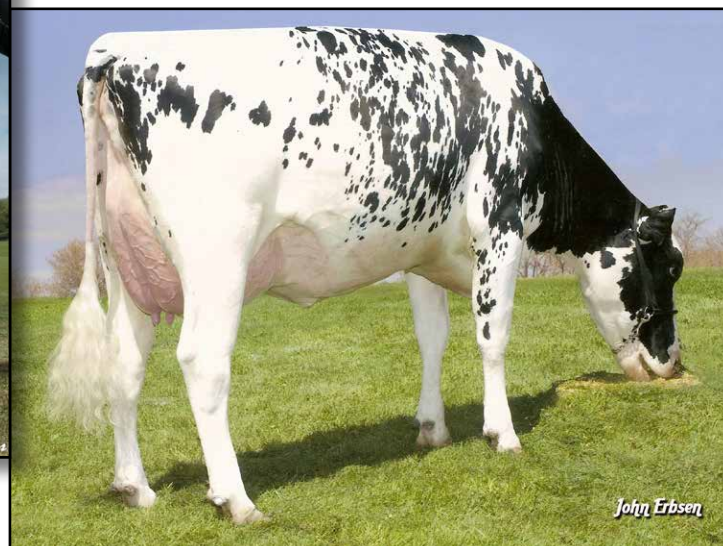
8-08 2x 338d 25930 3.9 1016

Life: 2647d 156000 3.7 5834





LARCREST CRIMSON EX-91 GMD DOM  
MATERNAL SISTER TO DAM OF LOT 5



LARCREST COSMOPOLITAN VG-87 GMD DOM  
2ND DAM OF LOT 5

5

## SIX #1 EMBRYOS

• Worldwide Export Available

### Holstein Plaza Contacts:

Steve Mower +1 240-520-5906

Jennifer Dingbaum +1 320-250-2412

### Clear-Echo Lexor Racer-ET

71974211 \*TV \*TL \*TY

PTA +1655M +70F +64P 72%R 8/13

PTA +861NM\$ +5.4PL 2.59SCS +1.5DPR

PTA +2.94T +3.08UDC +2.04FLC 71%R

GTPI +2497G / gRZG+163

### Larcrest Cambria-ETS

56264527 Very Good-85 VG-MS @ 2-11

GTPI+1967 +31M +54F +18P +3.33T

2-07 2x 365d 26650 5.5 1453 3.5 939

### Genervations Lexor

11098658 \*TY \*TL

PTA +1512M +94F +75P 77%R 8/13

PTA +2.65T +1.88UDC +2.27FLC

GTPI +2335G

### Clear-Echo Observer 2280-ET

68669880 Good Plus-84

2-01 3x 280d 22539 3.7 823 3.1 695

### Braedale Goldwyn

CAN 10705608 GP-CAN EX'05 \*TV \*TL

PTA +44M +32F +14P 99%R 8/13

PTA +2.94T +2.54UDC +2.40FLC

GTPI +1927G

### Larcrest Cosmopolitan

52475668 Very Good-87 GMD DOM

GTPI+2051 +200M +69F +23P +3.38T

2-04 2x 365d 30930 4.1 1261 3.6 1119

### 3rd thru 6th Dams

#### Larcrest Oside Champagne-TW

EX-90 GMD DOM

2-03 2x 365d 29110 4.5 1322 3.7 1077

• 17 sons in A.I. worldwide

#### Larcrest Juror Chanel EX-93 3E GMD DOM

9-00 2x 365d 48460 4.0 1943 3.4 1648

Life: 2899d 245420 4.3 10482 3.6 8866

#### Larcrest Lindy Chandra VG-85

2-05 2x 365d 20896 4.8 993 3.8 803

#### Larcrest Inspiration Carly VG-87

3-05 2x 305d 21800 4.5 973 3.3 802





**WABASH-WAY GLDWN EVE-ET VG-86 87-MS**  
2ND DAM OF LOT 6



**WABASH-WAY EMILYANN-ET VG-88-WYR DOM**  
3RD DAM OF LOT 6



**Holstein Plaza Contacts:**

Steve Mower +1 240-520-5906  
Jennifer Dingbaum +1 320-250-2412

**S-S-I Mogul Defender-ET**

3009554569 \*TV \*TL \*TY \*TD  
PTA +1379M +70F +55P 73%R 8/13  
PTA +4.9PL 2.67SCS +0.6DPR  
PTA +3.55T +3.57UDC +3.47FLC 73%R  
GTPI +2485G

**Wabash-Way Eves Easy Pea-ET**

70477020 Very Good-87-2YR VG-MS  
GTPI+2205 +1535M +47F +51P +2.84T  
2-03 2x 89d 7592 3.7 282 3.1 232 inc.  
• One of the highest Niagra daughters  
• Will be pictured Nov. 15, 2013

## FOUR #1 EMBRYOS

• Worldwide Shipment Available

**Mountfield SSI Dcy Mogul**

3006972816 \*TV \*TL \*TY \*TD  
PTA +1384M +80F +50P 77%R 8/13  
PTA +3.09T +3.15UDC +3.22FLC 77%R  
GTPI+2428G

**Regan-BH-ALH M Dannah**

66625308 Very Good-88  
2-00 3x 305d 26060 3.6 931 3.2 845

**Ri-Val-Re 2338 Niagra-ET**

62067753 \*TR \*TV \*TL \*TD  
PTA +1875M +27F +19P 99%R 8/13  
PTA +2.21T +2.20UDC +0.55FLC 98%R  
GTPI+2057G

**Wabash-Way Gldwn Eve-ET**

66183734 Very Good-86 VG-87-MS  
GTPI+1953 +331M +27F +19P +2.92T  
2-10 2x 365d 30104 3.3 999 3.4 1027  
• Maternal sister to the Proven Bulls  
*Explode, Evolve, Exact and Esteem*

**3rd thru 13th Dams**

**Wabash-Way Emilyann-ET**  
VG-88-2YR DOM

2-01 3x 365d 38614 3.9 1497 3.4 1324  
• Former #1 GTPI Cow in the Breed  
• Her Planet daughter highest Female  
ever sold in Europe

**Crockett-Acres Elita-ET VG-87 DOM**

2-02 2x 365d 39010 3.8 1480 3.5 1383

**Crockett -Acres Mtot Elly-ET**

EX-90 EX-MS GMD DOM

6-04 2x 283d 38840 3.3 1286 3.4 1302

**Wauregan Rudolph Ellymae-ET EX-90**

4-06 3x 365d 40210 3.6 1455 3.4 1375

**Whittier-Farms Lead Mae-ET**

EX-95 3E GMD

8-07 3x 357d 41270 4.8 1962 3.5 1440

Life: 1613d 126960 4.3 5473 3.6 4597

**Raymau Bstar Monica-ET VG-89 DOM**

2-01 2x 146d 12280 3.8 471 3.3 405

**Juniper Jason Maria VG-87 EX-MS DOM**

2-03 2x 365d 20260 4.3 868 3.6 736

**JDM-Pride Valiant Maggie**

EX-91 GMD DOM

6-00 2x 365d 35540 4.1 1441 3.3 1186

Life: 1666d 119120 4.2 5002 3.6 4281

**La-Ko-Land Penstate Sadie**

VG-87 GMD DOM

8-03 2x 336d 24420 3.3 818 3.2 781

Life: 2480d 166909 3.5 5732 3.2 2854

**La-Ko-Land Bootmaker Sally VG-86**

5-10 2x 365d 24450 4.1 1010

**La-Ko-Land Monitor Nancy EX-90**

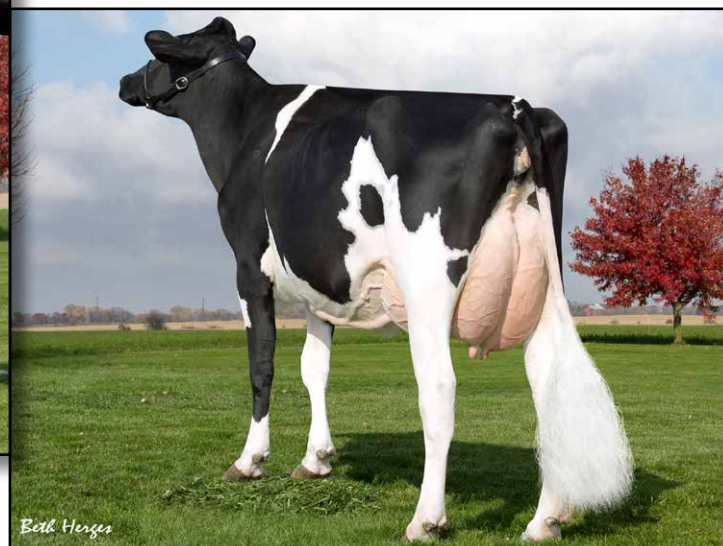
10-11 3x 320d 19670 3.1 619

Life: 2381d 145490 3.0 4442





AMMON-PEACHEY SHAUNA-ET VG-87 88-MS  
DAM OF LOT 7



AMMON-PEACHEY SHAUNA-ET VG-87 88-MS  
DAM OF LOT 7



**Holstein Plaza Contacts:**

Steve Mower +1 240-520-5906  
Jennifer Dingbaum +1 320-250-2412

**Coyne-Farms Jabir-ET**

70801850 \*TY  
PTA +1516M +98F +56P 73%R 8/13  
PTA +5.8PL 2.55SCS +2.8DPR  
PTA +2.63T +1.75UDC +2.90FLC 71%R  
GTPI +2531G

**Ammon-Peachey Shauna-ET**

66228178 Very Good-87 88-MS @ 2-04  
GTPI+2176 +1829M +70F +60P +2.55T  
2-01 3x 365d 35116 4.1 1427 3.3 1146  
• 1st Choice Females have sold for \$102,000 and \$100,000  
• HUGE Bull Dam, several sons in A.I. incl.: #1 Supersire (+2464G Robust); MVP (+2432G Mogul), Diamond & Platinum (+2378G Snowman), Headliner (+2344G Robust) Sargeant (+161gRZG Freddie)  
• Voted World's Favorite Planet daughter by Hotspots readers!

## FOUR #1 and 1 #2 EMBRYOS

• Available for Export ONLY; no U.S. & CA shipment

Maternal sisters to Lot 7

**Seagull-Bay Sh Maureen-ET** (s. Numero Uno)  
GTPI+2440 +800NM\$ +3.10T  
**Seagull-Bay Sh Miranda-ET** (s. Mogul)  
GTPI+2429 +890NM\$ +2.42T  
**Seagull-Bay Sh Mylady** (s. Numero Uno)  
GTPI+2409 +825NM\$ +2.79T  
**Seagull-Bay Sh Maddy-ET** (s. Mogul)  
GTPI+2408 +716NM\$ +3.60T

**Marbri Facebook-ET**

10847042C \*TV \*TL \*TY  
PTA +1717M +107F +62P 77%R 8/13  
PTA +2.53T +1.75UDC +1.89FLC 75%R  
GTPI +2317G

**Coyne-Farms Freddie Jill-ET**

68677598 Very Good-85 VG-MS @ 2-04  
2-00 3x 365d 33860 3.3 1125 3.1 1048

**Ensenada Taboo Planet-ET**

60597003 EX-90 GM 12/11 \*TR \*TV \*TL \*TY  
PTA +2216M +70F +66P 99%R 4/13  
PTA +1.93T +1.44UDC -.47FLC  
GTPI +2176G

**Pine-Tree Martha Sheen-ET**

62443682 Very Good-86 VG-MS DOM  
IM GTPI+2026 +659M +59F +33P  
1-11 3x 365d 31210 4.2 1305 3.3 1027

**3rd thru 8th Dams**

**Pine-Tree Missy Martha-ET** VG-86 DOM  
2-02 3x 365d 34730 3.6 1266 3.1 1070  
**Wesswood-HC Rudy Missy-ET**  
EX-92 3E DOM  
4-11 3x 365d 40880 4.1 1665 3.2 1308  
Life: 1262d 119610 4.1 4885 3.2 3804  
**Wesswood Elton Mimi** EX-90 GMD DOM  
3-05 2x 365d 35380 3.3 1160 3.2 1121  
**Wesswood Mandingo Ivy** VG-87 VEEVV  
6-05 2x 365d 36330 3.6 1305 3.0 1087  
Life: 1835d 144060 3.4 4933 3.1 4412  
**Wesswood Astro Matt Esther**  
VG-87 GMD DOM  
6-08 2x 365d 31860 3.5 1125 3.1 982  
Life: 1847d 140110 3.6 5029 3.2 4424  
**Wesswood Bell Claudette**  
VG-87 GMD DOM  
9-10 2x 365d 38810 3.6 1383 2.9 1140  
Life: 3634d 280980 3.6 9997 3.1 8625





**DE-SU 410-ET VG-85 VG-MS  
DAM OF LOT 8**



**SULLY SHOTTLE MAY-TW EX-90 EEEEE DOM  
2ND DAM OF LOT 8**



## SIX #1 EMBRYOS

• *Worldwide Export Available*

### Holstein Plaza Contacts:

Steve Mower +1 240-520-5906

Jennifer Dingbaum +1 320-250-2412

### De-Su Nominee-ET

70626023 \*TY

PTA +1771M +76F +67P 72%R 8/13

PTA +5.6PL 2.58SCS +2.3DPR

PTA +2.37T +2.08UDC +1.99FLC 72%R

GTPI +2487G

### De-Su 410-ET

69490564 Very Good-85 VG-MS @ 3-00

GTPI+2206 +1000M +28F +40P +3.24T

2-04 3x 150d 12840 3.6 461 3.0 390 inc.

*Daughter by Uno*

### De-Su Uno 2543-ET

GTPI+2539 +1591M +67F +60P +3.60T

### Amighetti Numero Uno-ET

ITA 17990915143 \*TV \*TL \*TY

PTA +971M +88F +46P 77%R 8/13

PTA +2.92T +2.69UDC +1.92FLC 76%R

GTPI +2462G

### Coyne-Farms Mass Jill-ET

68677629

2-03 3x 183d 14679 2.7 399 3.0 436 inc.

### De-Su Observer-ET

65917481 EX-90 \*TR \*TV \*TL \*TY \*TD

PTA +1406M +51F +42P 99%R 8/13

PTA +2.57T +3.02UDC +.34FLC

GTPI +2144G

### Sully Shottle May-TW

138218285 Excellent-90 EEEEE DOM

GTPI+2067 +1000M +29F +39P +2.98T

2-02 2x 365d 34110 3.2 1095 3.3 1130

5-04 2x 365d 38970 3.5 1354 3.1 1226

### 3rd thru 10th Dams

**Ms Sully Oman Muetze-ET EX-90 DOM**

4-08 2x 365d 33860 3.4 1164 3.4 1150

**Johnan Marshall Mint VG-85 VG-MS**

5-02 2x 365d 40100 3.0 1222 3.1 1244

Life: 1541d 124180 3.1 3880 3.0 4059

**Poly-Kow Rudolph Mink-ET**

VG-86 GMD DOM

2-00 2x 365d 29290 3.6 1054 3.4 987

**Poly-Kow Linda Mindy VG-88 GMD DOM**

3-08 2x 365d 39550 4.0 1589 3.0 1175

Life: 2057d 150290 3.9 5820 3.0 4556

**Footprint Nick Milan**

VG-89 GMD DOM

5-10 2x 365d 34530 4.1 1430 3.3 1128

**Footprint Mazda Command**

VG-85 GMD DOM

3-03 2x 305d 30280 4.2 1270 3.2 959

**Footprint Ned Boy Mercedes VG-85**

Life: 2085d 134700 3.5 4772 2.8 3760

**Footprint Cor-Vel Madonna-TW VG-85**

4-03 2x 350d 19520 3.5 684 2.9 560





**KINGSMILL ASPEN TAMARA-ET EX-92 EX-MS  
DAM OF LOT 9**



**GAIGE HIGHLIGHT TAMARA EX-97 4E DOM  
3RD DAM OF LOT 9**

9

### FIVE #1 EMBRYOS

- Worldwide Export Available

#### Holstein Plaza Contacts:

Steve Mower +1 240-520-5906

Jennifer Dingbaum +1 320-250-2412

#### Maple-Downs-I G W Atwood-ET

8956379C Very Good-87 \*TV \*TL \*TY \*TD  
PTA +293M +47F +14P 99%R 8/13  
PTA +79NM\$ -0.5PL 2.93SCS -4.8DPR  
PTA +4.65T +3.34UDC +3.77FLC 99%R  
GTPI +1770G

#### Kingsmill Aspen Tamara-ET

63427263 Excellent-92-5YR EX-MS  
2-06 2x 305d 21820 4.5 979 3.2 688  
4-07 2x 305d 35280 4.2 1482 3.4 1182  
• 1st 4-Year-Old, Eastern Fall National 2011

#### Braedale Goldwyn

CAN 10705608 GP-CAN EX'05 \*TV \*TL  
PTA +44M +32F +14P 99%R 8/13  
PTA +2.94T +2.54UDC +2.40FLC  
GTPI +1927G

#### MD-Delight Durham Atlee-ET

131704103 Excellent-92 EEEEE DOM  
3-11 2x 365d 38290 5.5 2091 3.1 1177  
• All-American Senior 3-Year-Old 2005

#### EK-Oseeana Aspen-ET

129854100 \*TV \*TL  
PTA -930M +18F -15P 99%R 8/13  
PTA +2.70T +1.67UDC +1.28FLC  
GTPI +1274G

#### Gaige Eland Tamale-ET

131988651 Excellent-92 EEEEE 2E GMD  
2-05 2x 365d 32530 3.6 1180 3.1 1021  
3-09 2x 305d 35710 3.5 1255 3.0 1055  
6-07 2x 305d 39710 4.0 1578 3.4 1356  
Life: 1517d 147270 3.7 5376 3.2 4759

#### 3rd Dam

##### Gaige Highlight Tamara

EX-97 EEEEE 4E DOM  
6-00 2x 365d 39810 3.1 1238 3.0 1203  
• All-American 125,000 lb Cow 2004  
• 1st Bred & Owned, World Dairy Expo 2004  
• HM Sr Champ, World Dairy Expo 2004  
• Grand Champ, NY State Fair 2004  
• Best Bred & Owned, NY State Fair 2004  
• Supreme Champion, NY State Fair 2004  
• Grand Champ, NY State Fair Jr Show 2003  
• Res Gr Champ, NY State Fair Open 2003  
• Grand Champion, WDE Jr Show 2002  
• Res Grand Champ, WDE 2002  
• Jr All-New York 2002  
• All-New York 2002  
• All-New York Daughter/Dam 2002  
• Jr. All-American 2002  
• Res. All-American & All-Canadian 2002  
• Candidate All-World in Holstein Int'l 2002  
• Res All-American & Res All-Canadian 1998





**MILKSOURCE SHOCK AFFAIR-ET**  
DAM OF LOT 10



**AMLAIIRD LEE ALICE EX-94 2E**  
2ND DAM OF LOT 10

**10**

## FOUR #1 EMBRYOS

- Worldwide Export Available

### Holstein Plaza Contacts:

Steve Mower +1 240-520-5906

Jennifer Dingbaum +1 320-250-2412

### Braedale Goldwyn

CAN 10705608 GP-CAN EX'05 \*TV \*TL

PTA +44M +32F +14P 99%R 8/13

PTA +353NM\$ +1.5PL 2.64SCS +0.0DPR

PTA +2.94T +2.54UDC +2.40FLC

GTPI +1927G

### Milksource Shock Affair-ET

69954137

- Looks great, Potential VG-86/VG-87
- Will be pictured next week

### Shoremar James

5902195C GP-81-CAN GM 2/04 \*TV \*TL

PTA -624M +7F +4P 99%R 8/13

PTA +.64T +.62UDC +.18FLC

GTPI +1239G

### Braedale Baler Twine

6860888C Very Good-86-CAN 29\*

2-01 2x 365d 30906 4.9 1521 3.4 1052

### Ms Atlees Sht Aftershock

65249839 \*TV \*TL \*TY \*TD

PTA +499M +26F +4P 99%R 8/13

PTA +3.19T +2.54UDC +2.21FLC 99%R

GTPI +1788G

### Amlaird Lee Alice-ET

7293258C Excellent-94 EEEEE 2E

7-05 2x 365d 36980 50 1837 3.2 1186

4-02 2x 365d 31530 4.8 1500 3.2 1008

Life: 2059d 129610 4.8 6177 3.3 4334

- All-American Junior 2-Year-Old 2003

### 3rd thru 4th Dams

#### Ms Kingstead Chief Adeen-ET

EX-94 2E DOM

3-05 2x 310d 30180 4.0 1209 3.4 1020

Life: 1382d 100760 4.0 4010 3.4 3458

- 2x Member All-American Produce

- Nom All-American Jr 3-Yr Old

- Nom All-American 4-Yr Old

- Dam of 16 VG and 11 EX Offspring

#### C Aitkenbrae Starbuck Ada EX-94 2E DOM

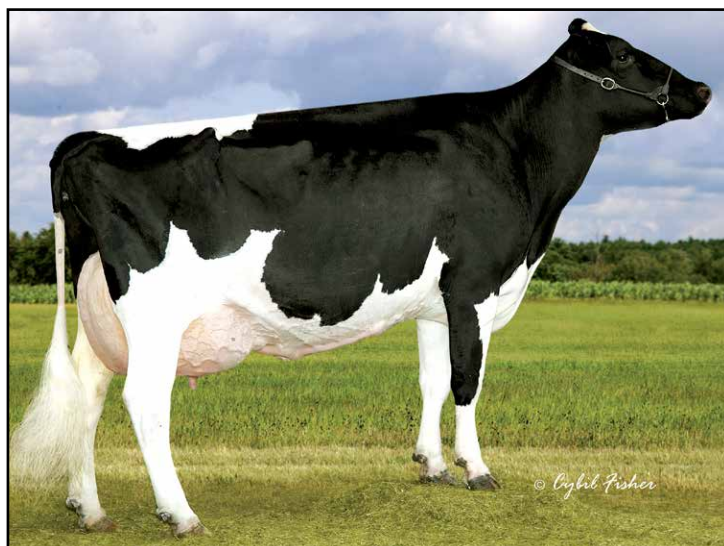
13-8 2x 365d 25150 3.0 764 3.2 796

2-05 2x 362d 25000 3.6 908 3.2 798

- All-American Produce of Dam 2000

- 1st Eastern Nat'l 3-Yr Old & Grand Ch 1990





**BUDJON-JK STORM EMILY-ET EX-92 2E DOM**  
2ND DAM OF LOT 11



**BUDJON-JK FALLEN EMBERS EX-92**  
FULL SISTER TO DAM OF LOT 11



## FOUR #1 EMBRYOS

- Worldwide Export Available

### Holstein Plaza Contacts:

Steve Mower +1 240-520-5906  
Jennifer Dingbaum +1 320-250-2412

### Braedale Goldwyn

CAN 10705608 GP-CAN EX'05 \*TV \*TL  
PTA +44M +32F +14P 99%R 8/13  
PTA +353NM\$ +1.5PL 2.64SCS +0.0DPR  
PTA +2.94T +2.54UDC +2.40FLC  
GTPI +1927G

### Budjon-JK DD Europe-ET

138418555 Excellent-90 EEEVV @ 3-06  
3-01 2x 365d 26630 3.6 966 3.2 865  
4-04 2x 365d 26340 3.5 935 3.3 876  
2-01 2x 320d 22220 3.6 796 3.3 727

Full sisters to Europe

### Budjon-JK Emilys Edair EX-94

- Nominated All-American 4-Year-Old 2011
- Nominated All-American Jr 3-Yr-Old 2010
- Nominated All-Canadian Jr 3-Yr-Old 2010
- Supreme Kingsmill Futurity Winner 2010
- Budjon-JK Fallen Embers EX-92
- Nominated All-American 4-Year-Old 2010
- Nominated All-Canadian 4-Year-Old 2010
- Grand Champion, WI State Show 2010

### Shoremar James

5902195C GP-81-CAN GM 2/04 \*TV \*TL  
PTA -624M +7F +4P 99%R 8/13  
PTA +.64T +.62UDC +.18FLC  
GTPI +1239G

### Braedale Baler Twine

6860888C Very Good-86-CAN 29\*  
2-01 2x 365d 30906 4.9 1521 3.4 1052

### Regancrest Dundee-ET

127640114 Excellent-95 \*TV \*TL  
PTA -313M -22F -5P 99%R 12/12  
PTA +2.04T +2.27UDC +.76FLC  
GTPI +1371G

### Budjon-JK Storm Emily-ET

- 133351712 Excellent-92 EEEEE 2E DOM  
4-08 2x 365d 41090 3.7 1514 3.2 1329  
2-04 2x 365d 32730 3.7 1198 3.3 1071
- Reserve All-American Sr 2-Yr-Old 2005
  - Int Champ, Midwest Spring Nat'l 2005

### 3rd thru 8th Dams

#### Budjon-JK Linjet Eileen-ET

- EX-96 4E GMD DOM  
5-06 2x 365d 44703 3.7 1647 3.3 1467  
Life: 1881d 175330 3.6 6327 3.4 5956
- Reserve All-American Aged Cow 2005
  - Grand Champion, Midwest Sprng Nat'l 2005
  - All-American 5-Year-Old Cow 2004
  - Res Sr Champion International Show 2004
  - HM All-Canadian Sr 3 Year Old Cow 2002
  - Nom All-American Sr 2 Year Old Cow 2001

#### Krull Broker Elegance

- EX-96 3E GMD DOM  
5-07 2x 365d 40950 3.7 1522 3.1 1272  
Life: 2356d 183710 3.7 6878 3.2 5919
- HM All-American Aged Cow 1999
  - HM All-Canadian Mature Cow 1999
  - 1st International 125,000 lb Cow 2000
  - 2nd Mid-W Spr Nat 4Y Cow 1997

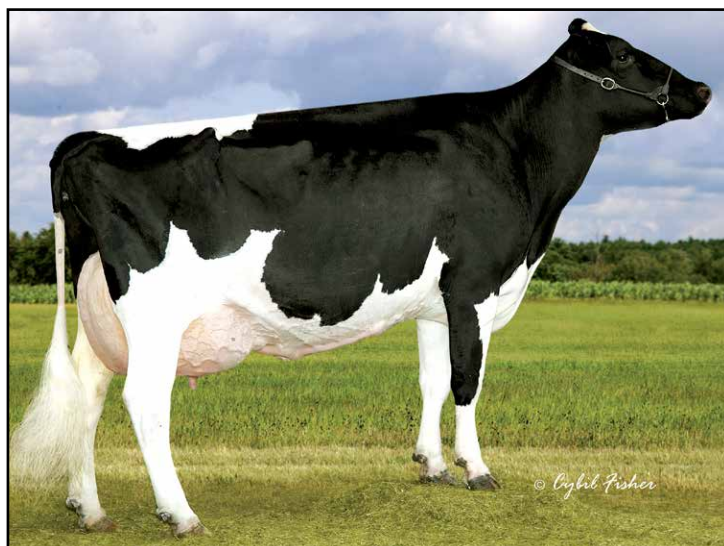
#### Krull Starbuck Excellency

- EX-90 GMD DOM  
3-03 2x 365d 27140 3.5 937 3.4 930  
**Krull TT Excellency** EX-90 VEEE DOM  
3-02 2x 363d 24319 3.5 862 3.4 829  
Life: 1733d 109780 3.7 4077 3.3 3605

#### Krull Boot Mark Excellency EX-92 2E GMD

- 6-06 2x 365d 27410 3.8 1040 3.1 868  
Life: 3026d 201440 3.5 7105 3.0 4634  
**Krull Kingstead Excellency** EX-92 4E GMD  
12-4 2x 323d 21920 3.5 772  
Life: 3364d 179790 3.6 6436





**BUDJON-JK STORM EMILY-ET EX-92 2E DOM**  
2ND DAM OF LOT 12



**BUDJON-JK FALLEN EMBERS EX-92**  
FULL SISTER TO DAM OF LOT 12

**12**

## FOUR #1 EMBRYOS

- Worldwide Export Available

### Holstein Plaza Contacts:

Steve Mower +1 240-520-5906

Jennifer Dingbaum +1 320-250-2412



### KHW Elm-Park Acme-ET \*RC (SEXED)

61720218 Excellent-90 GM \*TV \*TL \*TD  
PTA -93M +25F +16P 98%R 8/13  
PTA +3.2PL 3.09SCS -.2DPR  
PTA +2.75T +3.03UDC +1.54FLC 96%R  
GTPI +1876G

### Budjon-JK DD Europe-ET

138418555 Excellent-90 EEEVV @ 3-06  
3-01 2x 365d 26630 3.6 966 3.2 865  
4-04 2x 365d 26340 3.5 935 3.3 876  
2-01 2x 320d 22220 3.6 796 3.3 727

### Full sisters to Europe

#### Budjon-JK Emilys Edair EX-94

- Nominated All-American 4-Year-Old 2011
- Nominated All-American Jr 3-Yr-Old 2010
- Nominated All-Canadian Jr 3-Yr-Old 2010
- Supreme Kingsmill Futurity Winner 2010
- Budjon-JK Fallen Embers EX-92
- Nominated All-American 4-Year-Old 2010
- Nominated All-Canadian 4-Year-Old 2010
- Grand Champion, WI State Show 2010

### Ladino Park Talent-Imp-ET

AUS 930377 EX-90 ST\*03 \*RC \*TV \*TL  
PTA -252M -32F +3P 99%R 8/13  
PTA +2.15T +2.33UDC +1.13FLC  
GTPI +1436G

### Kamps-Hollow Altitude-ET \*RC

129136431 EX-95 EEEEE 2E DOM  
7-00 2x 365d 39690 4.7 1849 3.5 1385

### Regancrest Dundee-ET

127640114 Excellent-95 \*TV \*TL  
PTA -394M -23F -6P 99%R 8/13  
PTA +2.08T +2.31UDC +.82FLC  
GTPI +1374G

### Budjon-JK Storm Emily-ET

133351712 Excellent-92 EEEEE 2E DOM  
4-08 2x 365d 41090 3.7 1514 3.2 1329  
2-04 2x 365d 32730 3.7 1198 3.3 1071  
• Reserve All-American Sr 2-Yr-Old 2005  
• Int Champ, Midwest Spring Nat'l 2005

### 3rd thru 8th Dams

#### Budjon-JK Linjet Eileen-ET

EX-96 4E GMD DOM  
5-06 2x 365d 44703 3.7 1647 3.3 1467  
Life: 1881d 175330 3.6 6327 3.4 5956  
• Reserve All-American Aged Cow 2005  
• Grand Champion, Midwest Sprng Nat'l 2005  
• All-American 5-Year-Old Cow 2004  
• Res Sr Champion International Show 2004  
• HM All-Canadian Sr 3 Year Old Cow 2002  
• Nom All-American Sr 2 Year Old Cow 2001

#### Krull Broker Elegance

EX-96 3E GMD DOM  
5-07 2x 365d 40950 3.7 1522 3.1 1272  
Life: 2356d 183710 3.7 6878 3.2 5919  
• HM All-American Aged Cow 1999  
• HM All-Canadian Mature Cow 1999  
• 1st International 125,000 lb Cow 2000  
• 2nd Mid-W Spr Nat 4Y Cow 1997

#### Krull Starbuck Excellency

EX-90 GMD DOM  
3-03 2x 365d 27140 3.5 937 3.4 930  
• Krull TT Excellency EX-90 VEEE DOM  
3-02 2x 363d 24319 3.5 862 3.4 829  
Life: 1733d 109780 3.7 4077 3.3 3605

#### Krull Boot Mark Excellency EX-92 2E GMD

6-06 2x 365d 27410 3.8 1040 3.1 868  
Life: 3026d 201440 3.5 7105 3.0 4634  
• Krull Kingstead Excellency EX-92 4E GMD  
12-4 2x 323d 21920 3.5 772  
Life: 3364d 179790 3.6 6436





MS LICORICE GC LUSHOUS-ET \*RC  
DAM OF LOT 13



ROCKYMOUNTAIN TALENT LICORICE EX-95  
2ND DAM OF LOT 13

13

## THREE #1 EMBRYOS

- Worldwide Export Available

### Holstein Plaza Contacts:

Steve Mower +1 240-520-5906

Jennifer Dingbaum +1 320-250-2412

### Mr Apples Armani \*RC

68571374 \*TV \*TL \*TY \*TD

PTA -502M +68F +21P 77%R 8/13

PTA +511NM\$ +2.6PL 2.84SCS +0.2DPR

PTA +3.41T +3.03UDC +3.25FLC 77%R

GTPI +2138G

### Ms Licorice GC Lushous-ET \*RC

71494844

Born: September 4, 2012

### Braedale Goldwyn

CAN 10705608 GP-CAN EX'05 \*TV \*TL

PTA +44M +32F +14P 99%R 8/13

PTA +2.94T +2.54UDC +2.40FLC

GTPI +1927G

### KHW Regiment Apple-Red-ET

135511521 Excellent-95 EEEEE DOM

4-01 2x 365d 35750 4.7 1682 3.7 1314

Life: 1972d 158680 4.8 7683 3.8 6034

### Mr Chassity Gold Chip-ET

140145553 100%RHA-NA \*TR \*TV \*TL

PTA +678M +34F +13P 77%R 8/13

PTA +3.85T +3.06UDC +3.05FLC

GTPI +2053G

### Rockymountain Talent Licorice

7990215C Excellent-95 @ 5YR 1\*

2-03 2x 305d 23682 3.3 785 3.3 785

3-10 2x 305d 32901 4.0 1310 3.4 1102

- All Canadian 4-Yr, Sr. 3-Yr
- Int. Champ Royal 2010
- Int. Champ QC International 2010
- Res. Grand QC International 2010
- HM. Grand Royal 2010

### 3rd thru 5th Dams

**Idee Rudolph Liberty** VG-89-3YR 2\*

2-03 2x 305d 19418 3.7 710 3.4 659

4-05 2x 305d 28946 3.4 977 3.2 937

5-11 2x 305d 30181 3.4 1021 3.2 968

**Idee Skychief Layota** VG-88-7YR 8\*

2-08 2x 305d 21065 4.4 924 3.4 716

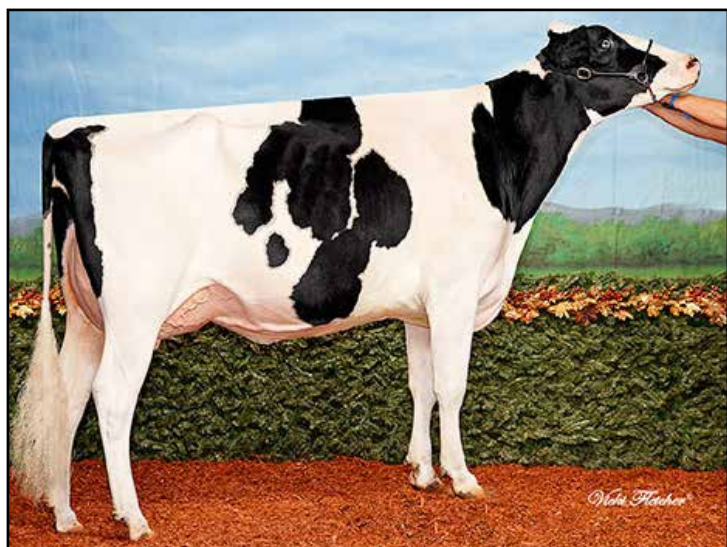
5-07 2x 305d 28195 4.1 1155 3.2 893

**Ravenswell Lydia** EX-92-3YR DOM 19\*

5-01 2x 305d 21475 4.6 922 3.3 714

- Lydia has 14 VG & 6 EX daughters!





**GOLDIE SANCHEZ CHARDONAY-ET EX-91**  
2ND DAM OF LOT 14



**R-Z BAXTER CARAMEL VG-89-2YR DOM**  
3RD DAM OF LOT 14

14

## THREE #1 EMBRYOS

- Worldwide Export Available

### Holstein Plaza Contacts:

Steve Mower +1 240-520-5906

Jennifer Dingbaum +1 320-250-2412

### Clear-Echo Lexor Racer-ET

71974211 \*TV \*TL \*TY

PTA +1655M +70F +64P 72%R 8/13

PTA +861NM\$ +5.4PL 2.59SCS +1.5DPR

PTA +2.94T +3.08UDC +2.04FLC 71%R

GTPI +2497G / gRZG+163

### Navs-SG Syrah-ET

71455199 Born: April 7, 2012

GPA-LPI+2769 / DGV+2841 / Conf+12

GTPI+2268 +1669M +60F +51P +3.13T

- Syrah will be pictured next week

### Generations Lexor

11098658 \*TY \*TL

PTA +1512M +94F +75P 77%R 8/13

PTA +2.65T +1.88UDC +2.27FLC

GTPI +2335G

### Clear-Echo Observer 2280-ET

68669880 Good Plus-84

2-01 3x 280d 22539 3.7 823 3.1 695

### Misty Springs Supersonic-ET

11113974C \*TY

PTA +1488M +79F +50P 77%R 8/13

PTA +2.44T +1.66UDC +1.53FLC 76%R

GTPI +2270G

### Goldie Sanchez Chardonay-ET

140567322 Excellent-91

GTPI+1892 +3.56T +3.13UDC +2.89FLC

2-03 2x 305d 20160 3.8 763 3.2 636

- Due in July and will show this fall!
- 3rd Jr 2-Yr-Old, Eastern Fall Nat'l 2012
- 4th generation VG-89 two-year-old

### 3rd thru 8th Dams

**R-Z Baxter Caramel VG-89-2YR DOM**

2-04 3x 365d 40291 4.6 1858 3.6 1442

**Ralma Goldwyn Carmel-ET**

EX-92 GMD DOM

2-00 3x 365d 34980 4.0 1404 3.7 1288

2-00 3 365 34980 4.0 1404 3.7 1288

**Ralma Christmas Cookie-ET**

VG-89 EX-MS DOM

2-06 2x 365d 28710 4.5 1297 3.4 967

**Ralma Christmas Fudge-ET**

VG-88 GMD DOM

2-03 2x 365d 31810 4.1 1292 3.2 1027

**Ralma Juror Faith EX-91 GMD DOM**

4-02 2x 365d 47860 4.5 2165 3.1 1497

Life: 1352d 133520 4.5 5986 3.3 4358

**Ralma Leadman Fashion VG-89**

4-10 2x 365d 40710 3.7 1494 3.0 1232

Life: 1243d 117710 3.6 4295 3.2 3743





**KHW REGIMENT APPLE-RED EX-95 DOM  
2ND DAM OF LOT 15**



**KHW REGIMENT APPLE-RED EX-95 DOM  
2ND DAM OF LOT 15**

# 15

### Holstein Plaza Contacts:

Steve Mower +1 240-520-5906  
Jennifer Dingbaum +1 320-250-2412

### Ladys-Manor Olympian \*RC

71592946 \*TV \*TL \*TY \*TD  
PTA +1445M +41F +52P 72%R 8/13  
PTA +746NM\$ +5.8PL 2.57SCS +1.9DPR  
PTA +3.22T +3.60UDC +2.23FLC 71%R  
GTPI +2437G

### Ms Apples Uno Ambrosia-ET \*RC

72227611 \*CV Born: October 24, 2012  
GTPI+2321 +415M +77F +50P +3.64T

## FOUR #2 EMBRYOS

- Worldwide Export Available

### Hunsberger Alchemy-ET \*RC

69080973 \*TY  
PTA +968M +32F +43P 76%R 8/13  
PTA +2.90T +2.82UDC +1.45FLC  
GTPI +2184G

### Ladys-Manor Dorcy Oda

69547657 Very Good-88 EX-MS @ 2-11  
• #1 GTPI Cow in the Breed!

### Amighetti Numero Uno-ET

ITA 17990915143 \*TV \*TL \*TY  
PTA +971M +88F +46P 77%R 8/13  
PTA +2.92T +2.69UDC +1.92FLC 76%R  
GTPI +2462G

### KHW Regiment Apple-Red-ET

135511521 Excellent-95 EEEEE DOM  
GTPI+1947 +3.76T +3.11UDC +3.95FLC  
4-01 2x 365d 35750 4.7 1682 3.7 1314  
7-00 2x 365d 33280 5.0 1654 3.6 1191  
5-03 2x 365d 30810 5.0 1527 3.9 1212  
2-02 2x 365d 28930 4.5 1297 3.6 1033  
Life: 1972d 158680 4.8 7683 3.8 6034

### APPLE!

- Reserve Grand Ch, Int'l R&W Show 2013
- 1st 125,000 lb. cow, Grand Int'l R&W 2013
- Grand Ch, Grand Int'l R&W Show 2011
- Unanimous All-American Jr 2-Yr-Old 2006
- All-American R&W Jr 2-Yr-Old 2006
- HHM All-American Jr 3-Yr-Old 2007
- Nom All-American R&W 5-Yr-Old 2009
- Res Grand Ch, Royal Winter R&W 2009
- HI World Champion R&W Cow 2010
- \$1,000,000 Sale Topper Global Glamour 2008

### 3rd thru 8th Dams

#### Kamps-Hollow Altitude-ET

EX-95 EEEEE 2E DOM  
2-00 2x 305d 24510 3.8 922 3.7 904  
7-00 2x 305d 34450 4.5 1562 3.4 1163

- Dam to proven bulls Advent, Jotan & Acme
- Red Impact Cow of the Year 2009

#### Clover-Mist Alisha-ET \*RC EX-93 3E DOM

8-07 2x 365d 36920 4.2 1553 3.4 1258  
Life: 2999d 226470 4.7 10659 3.6 8149

#### Clover-Mist Augy Star-ET \*RC

EX-94 4E DOM  
7-10 3x 365d 43140 5.0 2136 3.3 1421  
Life: 2486d 206250 4.7 9793 3.5 7187

#### D-R-A August EX-96 EEEE 4E DOM

8-05 2x 365d 27460 4.3 1187 3.2 871  
Life: 3443d 190200 4.4 8281 3.3 4457

- Nominated All-American Aged Cow 1986

#### D-R-A Ideal Precious Leader EX-90 2E

7-06 2x 358d 20090 3.9 787 3.4 675

#### D-R-A Princess Lad Leader EX-90 3E

9-05 2x 305d 19160 4.2 809





REGANCREST-PR BARBIE EX-92 GMD DOM  
3RD DAM OF LOT 16



REGANCREST G BROCADE-ET EX-92 DOM  
2ND DAM OF LOT 16

16

## FIVE #1 EMBRYOS

- Worldwide Export Available

### Holstein Plaza Contacts:

Steve Mower +1 240-520-5906

Jennifer Dingbaum +1 320-250-2412



### Ladys-Manor Shakespeare (SEXED)

71592934 \*TV \*TL \*TY \*TD

PTA +1454M +75F +53P 74%R 8/13

PTA +5.8PL 2.47SCS +0.2DPR

PTA +3.28T +2.94UDC +2.73FLC 73%R

GTPI +2450G

### Ms Brocade Uno Brie-ET

71494907

Born: October 25, 2012

GTPI+2138 +844M +37F +30P +3.66T

- Brie will be pictured next week

### Generations Epic-ET

11104016C \*TV \*TL \*TY \*TD

PTA +1785M +53F +54P 76%R 8/13

PTA +2.59T +1.97UDC +2.53FLC 75%R

GTPI +2332G

### Ladys-Manor Ruby D Shawn

62360741 Excellent-90 EX-MS DOM

GTPI+2125 +867M +58F +31P +3.45T

1-10 2x 365d 29690 4.5 1324 3.5 1042

### Amighetti Numero Uno-ET

ITA 17990915143 \*TV \*TL \*TY

PTA +971M +88F +46P 77%R 8/13

PTA +2.92T +2.69UDC +1.92FLC 76%R

GTPI +2462G

### Regancrest G Brocade-ET

62496933 Excellent-92 EEEEE DOM

4-00 2x 365d 38890 3.9 1517 3.5 1346

2-01 2x 365d 32680 3.9 1278 3.4 1126

- Several sons in A.I.

### 3rd thru 9th Dams

#### Regancrest-PR Barbie-ET

EX-92 GMD DOM

2-06 2x 365d 31690 3.9 1237 3.1 990

- HM All-American Junior 3-Yr Old 2004

- Former #1 Type Cow

#### Regancrest Juror Brina-ET EX-92 GMD

4-04 2x 365d 40640 3.6 1478 2.8 1140

- Member Nom AA Best 3 Females 2000

- Res Grand Champ Iowa State Show 2000

#### Regancrest Aerostar Bert-ET

EX-90 GMD DOM

5-02 2x 365d 37790 3.6 1357 3.0 1143

Life: 1305d 109350 3.7 4031 3.1 3350

#### Regancrest Mark Chairman Bea

EX-91 2E GMD

7-09 2x 365d 33630 3.8 1276 2.9 988

Life: 2036d 140130 4.1 5711 3.1 4350

#### Regancrest Board Chairman Bea EX-90

5-09 2x 365d 26010 4.1 1059 3.2 835

#### Regancrest Apache Standout Bea VG-86

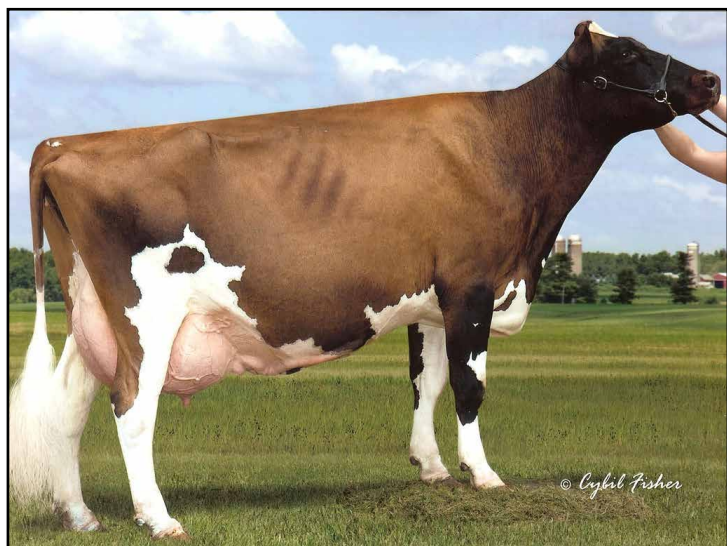
4-10 2x 320d 19070 4.0 766

Life: 2432d 131940 3.6 4744

#### Regancrest Standout Bertrand VG-85

4-01 2x 355d 17460 3.3 571





**ELLBANK CHERRY COKE-ET EX-92-5YR EX-MS**  
DAM OF LOT 17



**MIDAS-TOUCH DESTRY CORA-RED VG-85-2YR**  
MATERNAL SISTER OF LOT 17

**17**

**Holstein Plaza Contacts:**

Steve Mower +1 240-520-5906  
Jennifer Dingbaum +1 320-250-2412

**Mr Rollen-NS Camr Long-P-ET \*RC**

71446356 \*RC \*PO \*TV \*TL \*TY  
PTA +710M +37F +27P 72%R 8/13  
PTA +558NM\$ +5.4PL 2.84SCS +1.4DPR  
PTA +3.12T +2.67UDC +2.38FLC 71%R  
GTPI +2159G / gRZG +136

**Ellbank Cherry Coke-ET**

135273416 Excellent-92-5YR EX-MS  
2-08 2x 305d 21001 4.6 961 3.5 739  
3-11 2x 305d 27240 4.7 1283 3.5 944  
• Several Very Good two-year-old daughters

**FIVE #1 FEMALE IVF EMBRYOS**

• Available for U.S. Shipment and Export to the EU and China

Maternal sisters to Lot 17:

**Midas-Touch Destry Cora-Red-ET**  
Very Good-85-2YR

- 1st Sr 2-Yr Old NYS Jr. Int. R&W 2013
  - Nom. Jr. All-American Fall Yearling 2012
  - 3rd Fall Yearling PA All American
- Midas-Touch ChryPie-Red-ET EX-91**

**Shema Jeeves Cameron-ET**

66747411 \*TV \*TL \*TY \*TD  
PTA +1158M +46F +22P 76%R 8/13  
PTA +3.15T +2.78UDC +3.04FLC 76%R  
GTPI+2242G

**Tiger-Lily Dst Liz P-Red-ET \*PO**

69405972 Very Good-86 VG-MS @ 2-07

**Ja-Bob Jordan-Red-ET**

17378279 \*TV \*TL  
PTA -399M +33F +6P 99%R 8/13  
PTA +0.68T +0.56UDC -0.15FLC  
GTPI +1407G

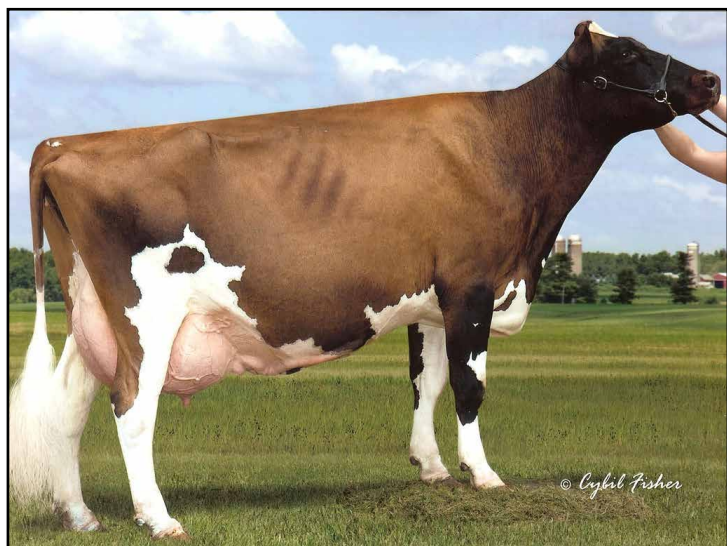
**Frogmore Ranger Cherry-Red**

15913906 Excellent-923 3E  
2-02 2x 365d 30569 4.0 1230 3.2 988  
4-09 2x 365d 29299 4.3 1263 3.4 1005  
6-05 2x 365d 26160 4.4 1146 3.4 895

**3rd thru 7th Dams**

**Frogmore Mark Cherry EX-90-5YR**  
4-01 3x 289d 20240 3.8 765 3.3 668  
**Frogmore Comm Cutie-Red EX-90-5YR**  
4-01 2x 305d 22710 3.1 714 3.1 694  
6-01 2x 305d 25770 3.2 836 3.1 794  
**Frogmore Threat Beauty EX-91**  
**Kinnie-Ridge Kit Bertha VG-87**  
**Kinnie-Ridge Standing Beryl-OC VG-86**





ELLBANK CHERRY COKE-ET EX-92-5YR EX-MS  
DAM OF LOT 18



MIDAS-TOUCH DESTRY CORA-RED VG-85-2YR  
MATERNAL SISTER OF LOT 18

18

**Holstein Plaza Contacts:**

Steve Mower +1 240-520-5906  
Jennifer Dingbaum +1 320-250-2412

**Apples Absolute-Red-ET**

139358472 Excellent-92 \*CV \*TL \*TY \*TD  
PTA -1400M +22F -2P 97%R 8/13  
PTA -0.6PL 3.38SCS -3.4DPR  
PTA +3.92T +3.56UDC +2.86FLC 95%R  
GTPI +1585G

**Ellbank Cherry Coke-ET**

135273416 Excellent-92-5YR EX-MS  
2-08 2x 305d 21001 4.6 961 3.5 739  
3-11 2x 305d 27240 4.7 1283 3.5 944

## FIVE #1 FEMALE IVF EMBRYOS

• Available for U.S. Shipment and Export to the EU and China

Maternal sister to Lot 18:

**Midas-Touch Destry Cora-Red-ET**  
Very Good-85-2YR

- 1st Sr 2-Yr Old NYS Jr. Int. R&W 2013
  - Nom. Jr. All-American Fall Yearling 2012
  - 3rd Fall Yearling PA All American
- Midas-Touch ChryPie-Red-ET EX-91**

**Ladino Park Talent-Imp-ET \*RC**

AUS 930377 \*TV \*TL  
PTA -252M -32F +3P 99%R 8/13  
PTA +2.15T +2.33UDC +1.13FLC  
GTPI +1436G

**KHW Regiment Apple-Red-ET**

135511521 Excellent-95 2E DOM  
4-01 2x 365d 35750 4.7 1682 3.7 1314  
• Grand Champion, Grand Int'l R&W Show 2011

**Ja-Bob Jordan-Red-ET**

17378279 \*TV \*TL  
PTA -399M +33F +6P 99%R 8/13  
PTA +0.68T +0.56UDC -0.15FLC  
GTPI +1407G

**Frogmore Ranger Cherry-Red**

15913906 Excellent-923 3E  
2-02 2x 365d 30569 4.0 1230 3.2 988  
4-09 2x 365d 29299 4.3 1263 3.4 1005  
6-05 2x 365d 26160 4.4 1146 3.4 895

**3rd thru 7th Dams**

**Frogmore Mark Cherry EX-90-5YR**  
4-01 3x 289d 20240 3.8 765 3.3 668  
**Frogmore Comm Cutie-Red EX-90-5YR**  
4-01 2x 305d 22710 3.1 714 3.1 694  
6-01 2x 305d 25770 3.2 836 3.1 794  
**Frogmore Threat Beauty EX-91**  
**Kinnie-Ridge Kit Bertha VG-87**  
**Kinnie-Ridge Standing Beryl-OC VG-86**





UFM-DUBS SHERAY-ET EX-90 DOM  
3RD DAM OF LOT 19

19

## FOUR #1 EMBRYOS

- Worldwide Shipment Available

### Holstein Plaza Contacts:

Steve Mower +1 240-520-5906

Jennifer Dingbaum +1 320-250-2412



### Seagull-Bay Supersire-ET (SEXED)

69981349 \*TV \*TL \*TY \*TD

PTA +2387M +112F +77P 75%R 8/13

PTA +5.8PL 2.80SCS -0.2DPR

PTA +2.37T +1.73UDC +1.37FLC 75%R

GTPI +2464G

### Jolicap Large Whoopi-ET

72028338

Born: September 3, 2012

GTPI+2277 +1371M +46F +48P +3.05T

- Will be pictured next week

### Roylane Socra Robust-ET

64966739 Very Good-88 \*TR \*TV \*TL \*TD

PTA +1441M +82F +50P 82%R 4/13

PTA +1.98T +1.96UDC +2.00FLC

GTPI +2245G

### Ammon-Peachey Shauna-ET

66228178 Very Good-87 VG-MS

2-01 3x 365d 35120 4.1 1427 3.3 1145

### Glen-Toctin Super Large-ET

140760397 \*TV \*TL \*TY

PTA +1419M +32F +42P 77%R 8/13

PTA +3.22T +2.75UDC +2.32FLC 77%R

GTPI +2249G

### UFM-Dubs Whisper-ET

70157397

GTPI+1962 +592M +40F +24P +2.44T

sired by: De-Su Observer

- Whisper was lost after calving, she looked very promising!

### 3rd thru 8th Dams

UFM-Dubs Sheray-ET EX-90 EX-MS DOM

6-00 2x 365d 31760 4.4 1402 3.3 1057

UFM-Dubs Eroy VG-87 GMD DOM

4-06 2x 365d 40330 4.4 1789 3.1 1239

Life: 1589d 129380 4.4 5738 3.3 4298

UFM-Dubs Sam Erin EX-90 2E GMD DOM

4-02 2x 365d 39450 4.1 1631 3.1 1219

Life: 1282d 106440 4.3 4526 3.2 3424

UFM-Dubs Patron Ellen EX-90 EEEEEV

2-11 2x 365d 26330 4.2 1106 3.3 878

Life: 1582d 110460 4.1 4559 3.3 3604

UFM Antci Bell VG-87 VEVVV

4-00 2x 365d 29120 3.6 1060 3.2 928

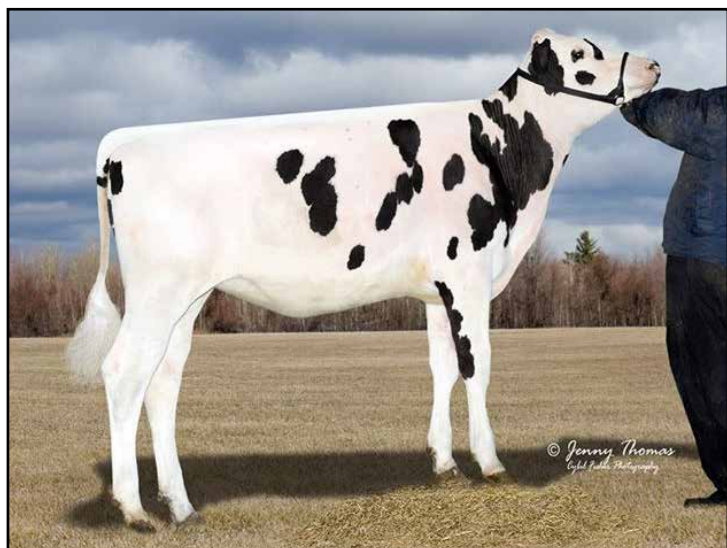
Life: 1744d 122410 3.8 4647 3.2 3901

UFM Jax Antci VG-85 GMD DOM

4-01 2x 305d 27360 3.7 1012 3.0 832

Life: 1839d 138700 3.8 5237 3.0 4164





**BAF-ZBW TURNING LAYNE**  
DAM OF LOT 20



**BURR-AYR BOLTON TRESSA EX-90 DOM**  
2ND DAM OF LOT 20

**20**

## FOUR #1 EMBRYOS

• Worldwide Export Available

### Holstein Plaza Contacts:

Steve Mower +1 240-520-5906

Jennifer Dingbaum +1 320-250-2412

### Cookiecutter Petron Halogen

3008710387 \*TV \*TL \*TY \*TD

PTA +1063M +59F +41P 72%R 8/13

PTA +8.1PL 2.41SCS +4.1DPR

PTA +2.86T +3.11UDC +1.34FLC 72%R

GTPI +2546G

### BAF-ZBW Turning Layne

3010631900 Born: June 22, 2012

GTPI+2291 +1391M +46F +41P +2.04T

### Welcome Super Petrone-ET

69207641 \*TR \*TV \*TL \*TY \*TD

PTA +1105M +47F +30P 75%R 8/13

PTA +2.25T +2.32UDC +1.67FLC 75%R

GTPI +2296G

### Cookiecutter MOM Halo-ET

3007069733 Very Good-88 EX-MS @ 2-09

2-00 3x 365d 35410 5.2 1832 3.5 1241

2-03 2x 159d 14324 4.3 611 3.2 454

### Kellercrest Super Layne-ET

69725085 VG-85 \*TR \*TV \*TL \*TY \*TD

PTA +1202M +24F +35P 77%R 8/13

PTA +2.46T +2.51UDC +2.08FLC 77%R

GTPI +2285G

### Burr-Ayr Bolton Tressa

64419316 Excellent-90 DOM \*TY

GTPI+2043 +1651M +61F +48P +1.25T

4-05 3x 352d 42100 3.9 1631 3.2 1350

2-03 2x 365d 33030 4.0 1332 3.3 1100

### 3rd thru 8th Dams

**Burr-Ayr O-Man Gabriela EX-90 DOM**

3-05 2x 365d 40870 3.4 1380 3.5 1428

**Burr-Ayr Patriot Marble VG-86 GMD**

4-04 3x 305d 32400 3.2 1039 2.8 914

Life: 1065d 102850 3.4 3456 2.8 2931

**Burr-Ayr Farms Oscar Mufasa VG-85 DOM**

4-03 3x 305d 38700 3.3 1294 3.1 1190

Life: 1277d 131150 3.3 4386 3.0 3996

**Burr-Ayr Farms SBM Mayo-ET**

VG-85 GMD

4-05 3x 305d 34300 3.0 1020 2.8 962

**Burr-Ayr Farms Mars Nugget**

EX-91 2E GMD DOM

4-01 2x 305d 35410 3.2 1145 3.0 1073

Life: 1220d 110720 3.1 3481 3.1 3413

**Burr-Ayr Farms Bell Nugget**

EX-90 GMD DOM

3-00 2x 365d 28320 3.3 947 3.3 939





**TRAMILDA-N BAXTER EMILY VG-85-USA 2YR**  
2ND DAM OF LOT 21



**JOLICAP UNO ELDORA-ET**  
DAM OF LOT 21

**21**

**Holstein Plaza Contacts:**

Steve Mower +1 240-520-5906  
Jennifer Dingbaum +1 320-250-2412

**Cookiecutter Petron Halogen**

3008710387 \*TV \*TL \*TY \*TD  
PTA +1063M +59F +41P 72%R 8/13  
PTA +8.1PL 2.41SCS +4.1DPR  
PTA +2.86T +3.11UDC +1.34FLC 72%R  
GTPI +2546G

**Jolicap Uno Eldora-ET**

71904498 Born: July 22, 2012  
GTPI+2249 +1036M +67F +41P +2.37T  
• Sister to Jolicap Emlee GTPI+2543  
• Maternal sister to Genervations Epic,  
Hood MOM Emmett

**THREE #1 EMBRYOS**

• Worldwide Shipment Available

**Welcome Super Petrone-ET**

69207641 \*TR \*TV \*TL \*TY \*TD  
PTA +1105M +47F +30P 75%R 8/13  
PTA +2.25T +2.32UDC +1.67FLC 75%R  
GTPI +2296G

**Cookiecutter MOM Halo-ET**

3007069733 Very Good-88 EX-MS @ 2-09  
2-00 3x 365d 35410 5.2 1832 3.5 1241

**Amighetti Numero Uno-ET**

ITA 17990915143 \*TV \*TL \*TY  
PTA +971M +88F +46P 77%R 8/13  
PTA +2.92T +2.69UDC +1.92FLC 76%R  
GTPI +2462G

**Tramilda-N Baxter Emily**

139232811 Very Good-85  
GTPI+2209 +2.32T +1.73UDC +2.26FLC  
2-05 2x 282d 30946 4.2 1287 3.2 1001  
• Full sister to Tramilda-N Escalade

**3rd thru 13th Dams**

**Wabash-Way Evett-ET VG-86 DOM**  
2-02 2x 365d 34187 4.9 1660 3.1 1046  
**Crockett-Acres Elita-ET VG-87 DOM**  
2-02 2x 365d 39010 3.8 1480 3.5 1383  
**Crockett -Acres Mtot Elly-ET**  
EX-90 EX-MS GMD DOM  
6-04 2x 283d 38840 3.3 1286 3.4 1302  
**Wauregan Rudolph Ellymae-ET EX-90**  
4-06 3x 365d 40210 3.6 1455 3.4 1375  
**Whittier-Farms Lead Mae-ET**  
EX-95 3E GMD  
8-07 3x 357d 41270 4.8 1962 3.5 1440  
Life: 1613d 126960 4.3 5473 3.6 4597  
**Raymau Bstar Monica-ET VG-89 DOM**  
2-01 2x 146d 12280 3.8 471 3.3 405  
**Juniper Jason Maria VG-87 EX-MS DOM**  
2-03 2x 365d 20260 4.3 868 3.6 736  
**JDM-Pride Valiant Maggie**  
EX-91 GMD DOM  
6-00 2x 365d 35540 4.1 1441 3.3 1186  
Life: 1666d 119120 4.2 5002 3.6 4281  
**La-Ko-Land Penstate Sadie**  
VG-87 GMD DOM  
8-03 2x 336d 24420 3.3 818 3.2 781  
Life: 2480d 166909 3.5 5732 3.2 2854  
**La-Ko-Land Bootmaker Sally VG-86**  
5-10 2x 365d 24450 4.1 1010  
**La-Ko-Land Monitor Nancy EX-90**  
10-11 3x 320d 19670 3.1 619  
Life: 2381d 145490 3.0 4442





**TRAMILDA-N BAXTER EMILY VG-85-USA 2YR**  
2ND DAM OF LOT 22



**WABASH-WAY EVETT-ET VG-86 DOM**  
3RD DAM OF LOT 22

22

## FIVE #1 EMBRYOS

- Worldwide Shipment Available

### Holstein Plaza Contacts:

Steve Mower +1 240-520-5906  
Jennifer Dingbaum +1 320-250-2412

### De-Su Nominee-ET

70626023 \*TY  
PTA +1771M +76F +67P 72%R 8/13  
PTA +5.6PL 2.58SCS +2.3DPR  
PTA +2.37T +2.08UDC +1.99FLC 72%R  
GTPI +2487G / gRZG+156

### Ms Emily Eglantine-ET

71994202 Born: August 14, 2012  
GTPI+2243 +891M +78F +38P +1.80T  
• Sister to Jolicap Emlee GTPI+2543  
• Maternal sister to Genervations Epic,  
Hood MOM Emmett  
• Will be pictured next week

### Amighetti Numero Uno-ET

ITA 17990915143 \*TV \*TL \*TY  
PTA +971M +88F +46P 77%R 8/13  
PTA +2.92T +2.69UDC +1.92FLC 76%R  
GTPI +2462G

### Coyne-Farms Mass Jill-ET

68677629  
2-03 3x 183d 14679 2.7 399 3.0 436 inc.

### Air-Osa Excel altaAirnet

68769438 \*TV \*TL \*TY \*TD  
PTA +1254M +50F +47P 76%R 8/13  
PTA +2.15T +1.82UDC +0.82FLC 76%R  
GTPI+2141G

### Tramilda-N Baxter Emily

139232811 Very Good-85  
GTPI+2209 +2.32T +1.73UDC +2.26FLC  
2-05 2x 282d 30946 4.2 1287 3.2 1001  
• Full sister to Tramilda-N Escalade

### 3rd thru 13th Dams

**Wabash-Way Evett-ET VG-86 DOM**  
2-02 2x 365d 34187 4.9 1660 3.1 1046  
**Crockett-Acres Elita-ET VG-87 DOM**  
2-02 2x 365d 39010 3.8 1480 3.5 1383  
**Crockett -Acres Mtot Elly-ET**  
EX-90 EX-MS GMD DOM  
6-04 2x 283d 38840 3.3 1286 3.4 1302  
**Wauregan Rudolph Ellymae-ET EX-90**  
4-06 3x 365d 40210 3.6 1455 3.4 1375  
**Whittier-Farms Lead Mae-ET**  
EX-95 3E GMD  
8-07 3x 357d 41270 4.8 1962 3.5 1440  
Life: 1613d 126960 4.3 5473 3.6 4597  
**Raymau Bstar Monica-ET VG-89 DOM**  
2-01 2x 146d 12280 3.8 471 3.3 405  
**Juniper Jason Maria VG-87 EX-MS DOM**  
2-03 2x 365d 20260 4.3 868 3.6 736  
**JDM-Pride Valiant Maggie**  
EX-91 GMD DOM  
6-00 2x 365d 35540 4.1 1441 3.3 1186  
Life: 1666d 119120 4.2 5002 3.6 4281  
**La-Ko-Land Penstate Sadie**  
VG-87 GMD DOM  
8-03 2x 336d 24420 3.3 818 3.2 781  
Life: 2480d 166909 3.5 5732 3.2 2854  
**La-Ko-Land Bootmaker Sally VG-86**  
5-10 2x 365d 24450 4.1 1010  
**La-Ko-Land Monitor Nancy EX-90**  
10-11 3x 320d 19670 3.1 619  
Life: 2381d 145490 3.0 4442





**SHAWNEE SHOTTLE SHINEY-ET EX-92 2E DOM  
DAM OF LOT 23**



**SHAWNEE DURHAM STRATOS VG-86 DOM  
2ND DAM OF LOT 23**

**23**

## SIX #1 EMBRYOS

• Worldwide Export Available

### Holstein Plaza Contacts:

Steve Mower +1 240-520-5906

Jennifer Dingbaum +1 320-250-2412

### De-Su Nominee-ET

70626023 \*TY

PTA +1771M +76F +67P 72%R 8/13

PTA +5.6PL 2.58SCS +2.3DPR

PTA +2.37T +2.08UDC +1.99FLC 72%R

GTPI +2487G / gRZG+156

### Shawnee Shottle Shiney-ET

61978045 Excellent-92 EX-MS 2E DOM

GTPI+1917 +2.10T +2.05UDC +1.18FLC

5-11 3x 365d 45724 4.8 2215 3.6 1666

3-01 2x 365d 35670 4.1 1474 3.4 1214

2-00 2x 325d 23750 4.2 998 3.5 839

### Amighetti Numero Uno-ET

ITA 17990915143 \*TV \*TL \*TY

PTA +971M +88F +46P 77%R 8/13

PTA +2.92T +2.69UDC +1.92FLC 76%R

GTPI +2462G

### Coyne-Farms Mass Jill-ET

68677629

2-03 3x 183d 14679 2.7 399 3.0 436

### Picston Shottle-ET

GBR 598172 EX-95 GM 12/11 \*TV \*TL \*TY

PTA +995M +27F +49P 99%R 8/13

PTA +2.45T +1.93UDC +1.65FLC

GTPI +1971G

### Shawnee Durham Stratos

130909130 Very Good-86 VVVVVV DOM

4-09 2x 365d 40790 3.7 1513 3.1 1254

2-09 2x 365d 32130 4.1 1315 3.2 1027

• Embryos Exported

• Sons in A.I.

### 3rd thru 12th Dams

#### Shawnee Rudolph Sheryl

EX-90 EX-MS GMD DOM

7-07 2x 365d 32090 3.7 1187 3.1 993

Life: 2247d 182580 3.7 6748 3.1 5693

#### Conant-Acres-HS Sara-ET

GP-82 GMD DOM

3-01 2x 365d 29790 3.2 948 3.0 903

#### Shade-E-Lane-E Sahara-ET VG-88 DOM

5-08 2x 365d 24850 3.6 906 3.6 884

#### Conant-Acres-JY SWD Sabra-ET

VG -88 VG -MS DOM

2-09 2x 365d 21450 3.5 758 3.1 673

#### Swampy-Hollow Elevation Sweet

EX-92 EX-MS 3E GMD DOM 5\*

5-05 2x 365d 26170 4.9 1273

Life: 2121d 115148 4.7 5467

#### Swampy-Hollow Sugar-TW

EX-91 EX-MS 3E GMD DOM 5\*

6-08 2x 365d 24299 4.8 1157 4.8 1157

#### Swampy-Hollow Lad Connie VG -87

6-01 2x 324d 20470 4.5 917

#### Swampy-Hollow Cinderella VG-88

8-10 2x 305d 12271 4.6 567

#### Swampy-Hollow Inka Cindy-TW EX-92 3E

5-02 2x 365d 21570 4.0 871

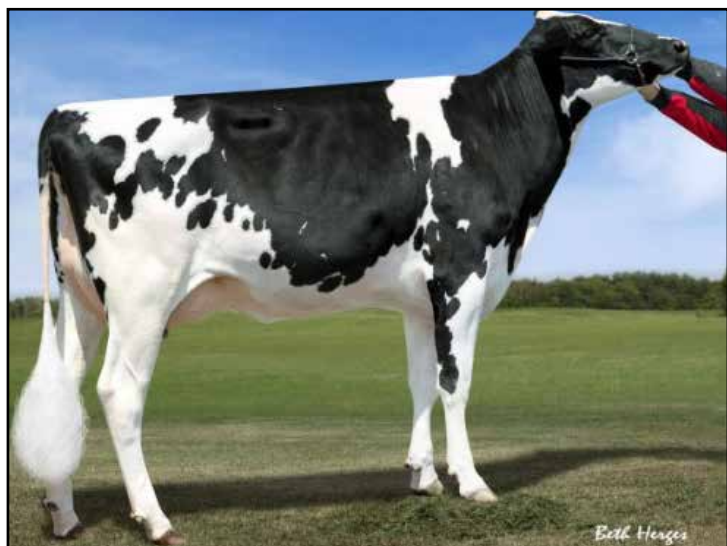
Life (7 Lacs): 132507 3.9 5176

#### Valerie Cherrydale Lucifer EX-91 3E GMD

6-11 2x 325d 19202 4.1 791

Life (13 Lacs): 180561 4.2 7573





**VISION-GEN SH SHO A12024-ET VG-85  
DAM OF LOT 24**



**VISION-GEN SH SHO A12037-ET VG-87 VG-MS @ 2-09  
FULL SISTER TO DAM OF LOT 24**

# 24

## FOUR #1 EMBRYOS

• *Worldwide Export Available*

*Maternal sister to Lot 24:*  
**Butlerview Uno Sho-Off-ET**  
GTPI+2471 +654M +70F +38P +3.63T

**Holstein Plaza Contacts:**

Steve Mower +1 240-520-5906  
Jennifer Dingbaum +1 320-250-2412

**De-Su 11236 Balisto-ET**

70625988 \*TV \*TL \*TY  
PTA +1673M +98F +77P 75%R 8/13  
PTA +824NM\$ +4.6PL 2.72SCS -0.5DPR  
PTA +2.33T +1.80UDC +1.76FLC 74%R  
GTPI +2398G / gRZG+166

**Vision-Gen Sh Sho A12024-ET**

69517360 Very Good-85 VG-MS @ 2-11  
GTPI+2040 +28M +36F +11P +3.45T  
• *Full sister to Vision-Gen Sh Sho A12037*  
• *Already has a GTPI+2471 Uno daughter*

**De-Su 521 Bookem**

66636657 \*TR \*TV \*TL \*TY \*TD  
PTA +1584M +45F +57P 93%R 8/13  
PTA +2.45T +2.29UDC +1.13FLC 89%R  
GTPI +2222G

**De-Su 199-ET**

69490353 Very Good-85

**Picston Shottle-ET**

GBR 598172 EX-95 GM 12/11 \*TV \*TL \*TY  
PTA +1002M +50F +28P 99%R 4/13  
PTA +2.54T +1.95UDC +1.73FLC  
GTPI +1975G

**KY-Blue GW Dana-ET**

139457788 Excellent-91 EX-MS @ 4-06  
4-01 2x 185 16881 4.5 765 3.2 540

**3rd thru 5th Dams**

**BVK Outside Diana-ET** EX-92 2E DOM  
5-01 2x 365d 31920 3.5 1129 3.2 1034  
Life: 1544d 107400 3.5 3708 3.3 3549

**Ms Kingstead Chief Adeen-ET**  
EX-94 2E DOM

3-05 2x 310d 30180 4.0 1209 3.4 1020  
Life: 1382d 100760 4.0 4010 3.4 3458

- *2x Member All-American Produce*
- *Nom All-American Jr 3-Yr Old*
- *Nom All-American 4-Yr Old*
- *Dam of 16 VG and 11 EX Offspring*
- C Aitkenbrae Starbuck Ada** EX-94 2E DOM  
13-8 2x 365d 25150 3.0 764 3.2 796  
2-05 2x 362d 25000 3.6 908 3.2 798
- *All-American Produce of Dam 2000*
- *1st Eastern Nat'l 3-Yr Old & Grand Ch 1990*





CHERRY CREST BLACK HEAT \*RC EX-91-CAN  
DAM OF LOT 25

25

## FIVE #1 EMBRYOS

• Worldwide Export Available

### Holstein Plaza Contacts:

Steve Mower +1 240-520-5906

Jennifer Dingbaum +1 320-250-2412

### Swissbec Brekem \*RC

107559777C \*TV \*TL \*TY

PTA +1347M +56F +61P 75%R 8/13

PTA +651NM\$ +4.6PL 2.83SCS +0.4DPR

PTA +2.66T +2.38UDC +1.37FLC 73%R

GTPI +2270G / GPA-LPI +3253 / gRZG+150

### Cherry Crest Black Heat \*RC

7791965 Excellent-91-CAN

5-04 2x 308d 34689 4.7 1631 3.3 1162

3-08 2x 349d 24652 4.3 1069 3.6 880

2-05 2x 351d 22921 4.4 1001 3.7 849

• 3rd 5-Year-Old, Lotbiniere 2012

• 1st Int Calf, Glengarry 2007

### De-Su 521 Bookem

66636657 \*TR \*TV \*TL \*TY \*TD

PTA +1584M +45F +57P 93%R 8/13

PTA +2.45T +2.29UDC +1.13FLC 89%R

GTPI +2222G

### Misty Springs MOM Brenna

11020417C Very Good-86-2YR-CAN

2-04 2x 365d 31751 4.3 1378 3.3 1054

### Braedale Goldwyn

CAN 10705608 GP-CAN EX'05 \*TV \*TL

PTA +44M +32F +14P 99%R 8/13

PTA +2.94T +2.54UDC +2.40FLC

GTPI +1927G

### Cherry Crest Sizzling Red Hot

9376598C Excellent-91-CAN 2\*

3-09 2x 344d 27917 3.7 1043 3.4 937

2-05 2x 365d 27031 3.7 990 3.3 880

• HM All-American R&W Int Yrlg 2004

• 3rd 4-Yr-Old, Quebec Spring R&W 2007

### 3rd thru 7th Dams

Primevalley Astre Lulu VG-88-CAN 2\*

4-11 2x 365d 27826 3.8 1069 3.3 913

Andryan Stratos-Raisa-Red-ET GP-81

9-00 2x 285d 25525 3.3 831 3.1 802

Albrecht Regina ET-Red EX 1\*

4-08 2x 365d 30430 3.6 1093 3.2 974

Val Brillant Rina-Red VG-85-CAN 3\*

6-03 2x 365d 27571 4.1 1131

Val Brillant Tina Supreme VG-86-CAN

4-10 2x 345d 19663 3.5 692 3.7 725





**ELK-LICK TALNT AR-GLORY-ET EX-91 2E**  
2ND DAM OF LOT 26

26

## FIVE #1 EMBRYOS

• Worldwide Export Available

### Holstein Plaza Contacts:

Steve Mower +1 240-520-5906

Jennifer Dingbaum +1 320-250-2412

### KHW Kite Advent-Red-ET

133002953 Excellent-95 \*TV \*TL \*TD

PTA -1012M -11F -21P 99%R 8/13

PTA +1.6PL 3.04SCS +2.2DPR

PTA +2.60T +2.27UDC +1.65FLC

GTPI +1574G

### My-Style C Giggles-Red-ET

70528415 Very Good-86-2YR

### Markwell Kite-ET \*RC

128460878 \*TV \*TL

PTA -1240M -26F -38P 99%R 8/13

PTA +2.06T +1.66UDC -0.18FLC

GTPI +899G

### Kamps-Hollow Altitude-ET \*RC

129136431 EX-95 EEEEE 2E DOM

7-00 2x 365d 39690 4.7 1849 3.5 1385

### Patience Sholine Contender-Red

7483577 Excellent-95 \*TV \*TL

PTA -2256M -43F -58P 97%R 8/13

PTA +2.61T +3.04UDC +1.72FLC

GTPI +1409G

### Elk-Lick Talnt Ar-Glory-ET \*RC

62509150 Excellent-91 EEEEEV 2E

4-03 2x 365d 30560 4.1 1241 3.1 943

6-03 2x 365d 28990 3.7 1085 3.1 900

1-11 2x 365d 23381 3.7 864 3.2 754

Life: 2194d 129541 3.9 5007 3.2 4187

### 3rd thru 5th Dams

#### Elk-Lick Ann Charles Ardel

EX-94 3E DOM

4-05 2x 365d 33160 4.0 1336 3.2 1070

Life: 2343d 156760 4.1 6381 3.1 4892

• Dam of twelve EX Daughters!

#### Elk-Lick Ann Star Arlene-TW VG-85

6-01 2x 317d 19330 3.3 635 3.0 584

Life: 2005d 100550 3.6 3576 3.1 3137

#### Elk-Ling Ann Viking VG-86

8-01 2x 292d 22960 3.6 833 2.9 674





**ELK-LICK TALNT AR-GLORY-ET EX-91 2E**  
2ND DAM OF LOT 26

27

### Holstein Plaza Contacts:

Steve Mower +1 240-520-5906

Jennifer Dingbaum +1 320-250-2412

### KHW Elm-Park Acme-ET \*RC

61720218 Excellent-90 GM \*TV \*TL \*TD

PTA -93M +25F +16P 98%R 8/13

PTA +3.2PL 3.09SCS -.2DPR

PTA +2.75T +3.03UDC +1.54FLC 96%R

GTPI +1876G

### My-Style C Giggles-Red-ET

70528415 Very Good-86-2YR

## FIVE #1 EMBRYOS

- Worldwide Export Available

### Ladino Park Talent-Imp-ET

AUS 930377 EX-90 ST'03 \*RC \*TV \*TL

PTA -252M -32F +3P 99%R 8/13

PTA +2.15T +2.33UDC +1.13FLC

GTPI +1436G

### Kamps-Hollow Altitude-ET \*RC

129136431 EX-95 EEEEE 2E DOM

7-00 2x 365d 39690 4.7 1849 3.5 1385

### Patience Sholine Contender-Red

7483577 Excellent-95 \*TV \*TL

PTA -2256M -43F -58P 97%R 8/13

PTA +2.61T +3.04UDC +1.72FLC

GTPI +1409G

### Elk-Lick Talnt Ar-Glory-ET \*RC

62509150 Excellent-91 EEEEEV 2E

4-03 2x 365d 30560 4.1 1241 3.1 943

6-03 2x 365d 28990 3.7 1085 3.1 900

1-11 2x 365d 23381 3.7 864 3.2 754

Life: 2194d 129541 3.9 5007 3.2 4187

### 3rd thru 5th Dams

#### Elk-Lick Ann Charles Ardel

EX-94 3E DOM

4-05 2x 365d 33160 4.0 1336 3.2 1070

Life: 2343d 156760 4.1 6381 3.1 4892

- Dam of twelve EX Daughters!

#### Elk-Lick Ann Star Arlene-TW VG-85

6-01 2x 317d 19330 3.3 635 3.0 584

Life: 2005d 100550 3.6 3576 3.1 3137

#### Elk-Ling Ann Viking VG-86

8-01 2x 292d 22960 3.6 833 2.9 674





**KINGSMILL ROY ROULETTE-ET EX-92 2E**  
DAM OF LOT 28

**28**

**Holstein Plaza Contacts:**

Steve Mower +1 240-520-5906  
Jennifer Dingbaum +1 320-250-2412

**Kulp-Dale Golden PP-Red-ET**

70805600 \*RC \*PP \*TL \*TD  
PTA +748M +17F +41P 72%R 8/13  
PTA +2.9PL 2.82SCS +0.7DPR  
PTA +2.08T +1.94UDC +1.64FLC 71%R  
GTPI +1968G

**Kingsmill Roy Roulette-ET**

63016084 Excellent-92 EEEEE 2E  
6-04 2x 256d 22094 3.8 889 2.7 563 inc.  
4-03 2x 347d 24327 3.8 932 3.0 736  
2-04 2x 365d 18545 3.8 699 3.1 573  
• 14th generation Excellent!

**SIX #1 EMBRYOS**

• Worldwide Export Available

**Sandy-Valley Colt P-Red-TW**

68731810 \*PO \*TV \*TL \*TY \*TD  
PTA +758M +9F +27P 74%R 8/13  
PTA +1.88T +2.12UDC +1.44FLC 76%R  
GTPI +1971G

**Kulp-Dale Gold Rush-ET**

65793924 Very Good-86 \*RC \*PO  
2-03 2x 249d 16609 4.0 670 3.4 651 inc.

**Roylane Jordan-ET**

17064727 Excellent-95 GM 2/04 \*TV \*TL  
PTA -329M -9F -13P 99%R 4/13  
PTA +2.08T +1.98UDC +.37FLC  
GTPI +1387G

**Astrahoe LJ Rosa Rebel-ET**

130430762 Excellent-92 EEEVV 2E  
7-05 2x 365d 48580 4.2 2021 3.0 1468  
3-02 3x 305d 32120 3.9 1250 3.1 1007  
Life: 1186d 110960 3.9 4326 3.2 3529

**3rd thru 14th Dams**

**Pinehurst Royal Rosa-ET EX-91 2E**

3-10 3x 365d 41395 3.3 1358 2.8 1145  
Life: 1212d 115400 3.5 4073 3.1 3593

**Pinehurst Roulade EX-92 EEEEE 2E**

5-00 3x 365d 35130 3.6 1271 3.2 1115  
Life: 1761d 142070 3.8 5395 3.3 4705

**Pinehurst Sweet Cleo EX-90 EEVEV**

6-00 3x 365d 40380 4.4 1776 3.2 1305

**Pinehurst Sweet Freedom EX-90 VEVE**

5-07 3x 330d 34520 4.3 1500 3.1 1084

**Pinehurst Sweet Delite EX-91 3E GMD**

8-10 3x 365d 28460 4.2 1194 3.2 917

Life: 2228d 151600 4.0 6116 3.2 4907

**Pinehurst Rapture EX-96 4E GMD**

8-02 3x 365d 30370 4.2 1290 3.1 948

Life: 2297d 160790 3.9 6337 3.0 2469

**Pinehurst Fragrance EX-90 2E**

4-8 3x 365d 34490 3.6 1234

**Hayssen Fond Ariel EX-90 2E**

8-06 2x 328d 23330 3.2 753

**Hayssen D V Audrey EX-90 2E**

9-03 2x 365d 23670 4.4 1035

**Whirlhill Q Rag Apple Ariel EX-92**

6-02 2x 365d 26755 4.2 1134

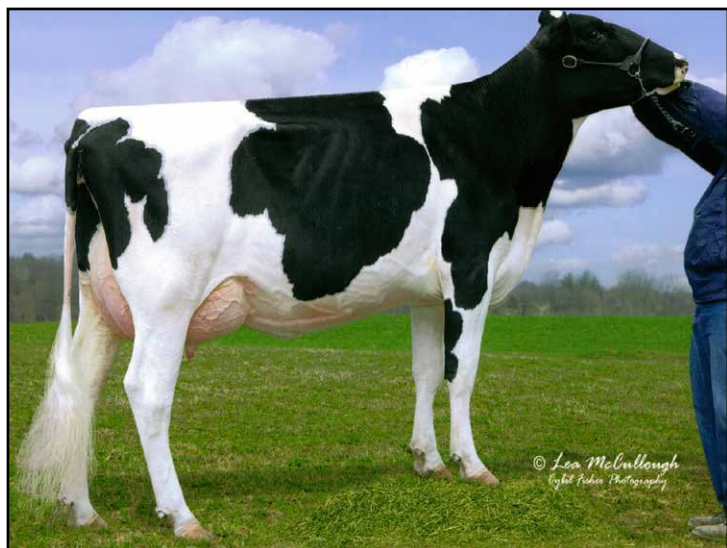
**Arlite Posch EX-92 GMD**

5-03 2x 365d 21193 3.7 779

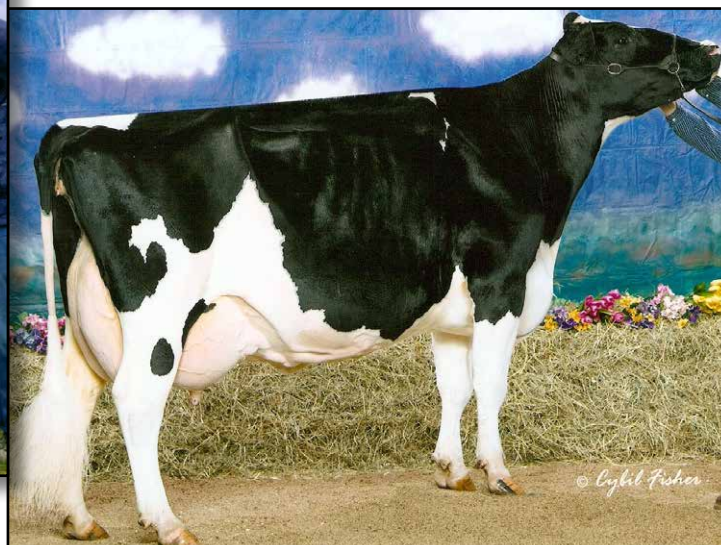
**Audrey Posch EX-93 GMD**

14-2 2x 365d 25572 3.7 948





SRF-ZBW STORM LEGACY-ET EX-90 EX-MS  
DAM OF LOT 29



STONE-RISE DURHAM LIZZY EX-95 3E GMD DOM  
2ND DAM OF LOT 29

29

## FIVE #1 EMBRYOS

• Worldwide Export Available

### Holstein Plaza Contacts:

Steve Mower +1 240-520-5906

Jennifer Dingbaum +1 320-250-2412



### Maple-Downs-I G W Atwood-ET (SEXED)

8956379C Very Good-87 \*TV \*TL \*TY \*TD  
PTA +293M +47F +14P 99%R 8/13  
PTA +79NM\$ -0.5PL 2.93SCS -4.8DPR  
PTA +4.65T +3.34UDC +3.77FLC 99%R  
GTPI +1770G

### SRF-ZBW Storm Legacy-ET

62535784 Excellent-90 EX-MS @ 3-05  
3-04 2x 305d 25060 4.2 1056 3.5 881 inc.  
2-00 2x 365d 26080 3.6 932 3.4 892

Full sister to Storm Legacy

### SRF-ZBW Storm Lucky EX-92

2-00 2x 310d 22606 3.3 752 3.3 737  
• 2nd Jr 2-Yr-Old, NY Int'l Spring Show

### Braedale Goldwyn

CAN 10705608 GP-CAN EX'05 \*TV \*TL  
PTA +44M +32F +14P 99%R 8/13  
PTA +2.94T +2.54UDC +2.40FLC  
GTPI +1927G

### MD-Delight Durham Atlee-ET

131704103 Excellent-92 EEEEE DOM  
3-11 2x 365d 38290 5.5 2091 3.1 1177  
• All-American Senior 3-Year-Old 2005

### Comestar Stormatic-ET

6947936C EX-CAN GM 2/07 \*TV \*TL  
PTA +359M -5F +2P 99%R 4/13  
PTA +1.70T +.76UDC +2.50FLC  
GTPI +1465G

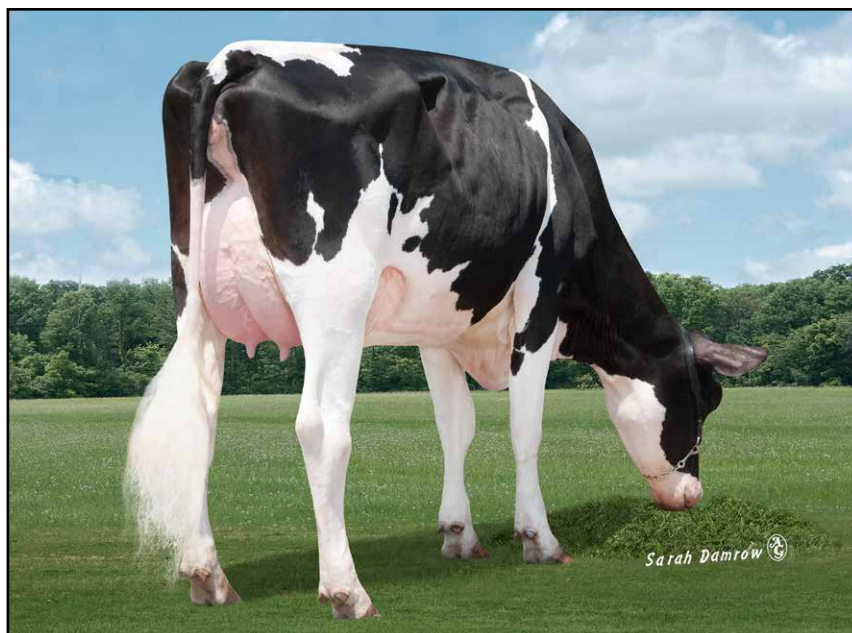
### Stone-Rise Durham Lizzy

131417106 Excellent-95 3E GMD DOM  
6-00 2x 365d 50470 3.4 1558 3.5 1774  
Life: 2213d 229970 3.3 7675 3.4 7709  
• 3 EX & 9 VG dtrs with none lower than VG  
• HHM All-American 125,000 lb Cow 2007  
• All-NY Aged Cow 2007  
• 3rd 125,000 lb Cow, Int'l Holstein 2007  
• Genetic Merit Winner, Int'l Holstein 2007  
• 1st Aged Cow & BU, NY State Fair 2007  
• All-NY 4-Year-Old 2005

### 3rd thru 12th Dams

**Stone-Rise Indy Leah** VG-88 VG-MS  
4-01 2x 353 34590 3.5 1205 3.1 1088  
Life: 2016d 198790 3.5 6919 3.1 6086  
**Stone-Rise Horton Lilith** GP-81  
3-01 2x 346d 26710 3.4 902 3.0 800  
**Stone-Rise Leadman Lex**  
VG-88 GMD DOM  
9-05 2x 365d 35590 4.1 1454 3.4 1193  
**Podonque Bell Ellie** GP-82  
5-06 2x 365d 28110 3.6 1003 3.1 881  
**Podonque Pete Aaggie Ella** VG-86  
3-06 2x 331d 18780 3.8 705 3.1 525  
**Podonque Comet Aaggie Rena** EX-90  
7-03 2x 294d 21740 3.3 726 3.1 672  
**Podonque Bootmaker Aaggie Nora**  
EX-90 GMD  
6-09 2x 320d 22020 3.5 764 3.1 680  
**Podonque X Aaggie Gloria-TW** VG-86  
10-0 2x 365d 15588 4.3 665  
**Podonque Burke Aaggie Palma** VG-88  
11-0 2x 305d 20480 3.5 725  
**P Medel Aaggie Lucille** EX-96





**BREMER ACTIVE CHARM-ET VG-86 VG-MS @ 2-06  
DAM OF LOT 30**

**30**

**Holstein Plaza Contacts:**

Steve Mower +1 240-520-5906  
Jennifer Dingbaum +1 320-250-2412

**Pine-Tree OHare-P-ET**

71178706 \*PO \*TV \*TL \*TY  
PTA +1946M +51F +52P 75%R 8/13  
PTA +673NM\$ +5.5PL 2.80SCS +.8DPR  
PTA +1.82T +1.49UDC +2.00FLC 75%R  
GTPI +2174G / gRZG +144

**Bremer Active Charm-ET**

66088957 Very Good-86 VG-MS @ 2-06  
GTPI+1804 +39M +40F +12P +1.29T  
2-01 2x 365d 24760 4.7 1163 3.7 917

### FOUR #1 EMBRYOS

• *Worldwide Export Available*

**Co-Op O-Style Oman Just-ET**

137611441 GM 12/11 \*TR \*TV \*TL \*TY  
PTA +2095M +43F +53P 99%R 8/13  
PTA +1.54T +1.22UDC +2.11FLC 95%R  
GTPI +2212G

**Hickorymea Signif Ohio-P-ET**

140759222 Very Good-85

**Alpag Iron Active-ET**

ITA 6920009167 GM 8/11 \*TV \*TL  
PTA +297M +45F +20P 99%R 8/13  
PTA +0.87T +.48UDC +.15FLC 99%R  
GTPI +1824G

**Solid-Gold Cheesecake-ET**

60697340 Very Good-88 EX-MS DOM  
5-07 2x 365d 40300 4.6 1854 3.4 1384  
Life: 1476d 136230 4.3 5804 3.4 4628

• *Sired by Comestar Outside-ET*

• *Sons in AI*

*Full brother to Cheesecake*

**Solid-Gold Colby-ET**

*Maternal sister to Lot 30*

**NH Mogul Champ**

• *One of the highest Outcross Heifers in Europe*  
• *Sold for €26,500 Eurogenes Summer Sale*

**3rd thru 5th Dams**

**Ms Solid-Gold Rud Cherry-ET**

VG-89 EVVVE @ 3-07  
2-04 3x 365d 40010 3.5 1382 3.0 1202  
Life: 1499d 124090 3.7 4532 3.1 3907

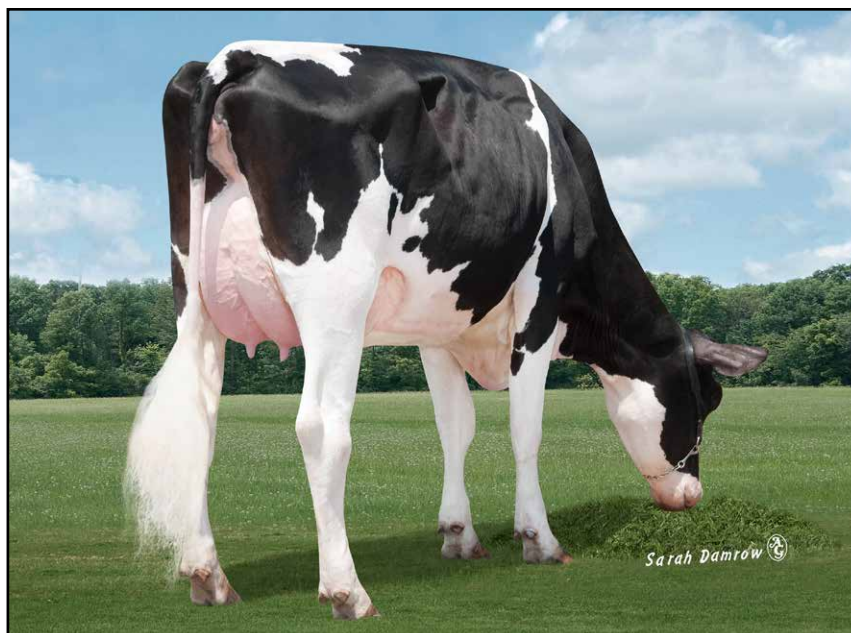
**Whiteleather Conquest 385**

EX-93 EEEEE DOM  
4-01 3x 365d 36200 3.9 1398 3.0 1100  
Life: 1087d 101916 3.5 3586 3.0 3036

**Whiteleather Rex SWD Val 2079 EX-91 2E**

6-00 2x 365d 30400 4.8 1470 3.0 924  
Life: 2130d 133480 4.2 5548 3.2 4246





**BREMER ACTIVE CHARM-ET VG-86 VG-MS @ 2-06  
DAM OF LOT 31**

**31**

**Holstein Plaza Contacts:**

Steve Mower +1 240-520-5906  
Jennifer Dingbaum +1 320-250-2412

**Cookiecutter Petron Halogen**

3008710387 \*TV \*TL \*TY \*TD  
PTA +1063M +59F +41P 72%R 8/13  
PTA +8.1PL 2.41SCS +4.1DPR  
PTA +2.86T +3.11UDC +1.34FLC 72%R  
GTPI +2546G

**Bremer Active Charm-ET**

66088957 Very Good-86 VG-MS @ 2-06  
GTPI+1804 +39M +40F +12P +1.29T  
2-01 2x 365d 24760 4.7 1163 3.7 917

**FIVE #1 EMBRYOS**

• *Worldwide Export Available*

**Welcome Super Petrone-ET**

69207641 \*TR \*TV \*TL \*TY \*TD  
PTA +1105M +47F +30P 75%R 8/13  
PTA +2.25T +2.32UDC +1.67FLC 75%R  
GTPI +2296G

**Cookiecutter MOM Halo-ET**

3007069733 Very Good-88 EX-MS @ 2-09  
2-00 3x 365d 35410 5.2 1832 3.5 1241  
2-03 2x 159d 14324 4.3 611 3.2 454

**Alpag Iron Active-ET**

ITA 6920009167 GM 8/11 \*TV \*TL  
PTA +297M +45F +20P 99%R 8/13  
PTA +0.87T +.48UDC +.15FLC 99%R  
GTPI +1824G

**Solid-Gold Cheesecake-ET**

60697340 Very Good-88 EX-MS DOM  
5-07 2x 365d 40300 4.6 1854 3.4 1384  
Life: 1476d 136230 4.3 5804 3.4 4628

• *Sired by Comestar Outside-ET*

• *Sons in AI*

*Full brother to Cheesecake*

**Solid-Gold Colby-ET**

*Maternal sister to Lot 31*

**NH Mogul Champ**

• *One of the highest Outcross Heifers in Europe*  
• *Sold for €26,500 Eurogenes Summer Sale*

**3rd thru 5th Dams**

**Ms Solid-Gold Rud Cherry-ET**

VG-89 EVVVE @ 3-07  
2-04 3x 365d 40010 3.5 1382 3.0 1202  
Life: 1499d 124090 3.7 4532 3.1 3907

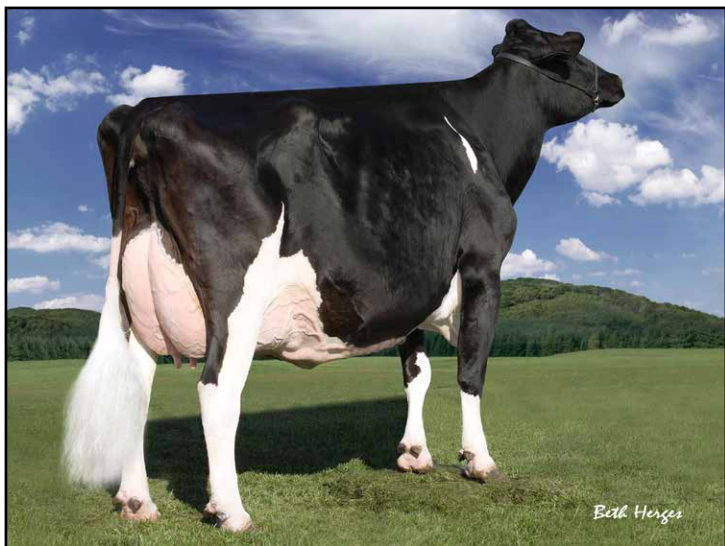
**Whiteleather Conquest 385**

EX-93 EEEEE DOM  
4-01 3x 365d 36200 3.9 1398 3.0 1100  
Life: 1087d 101916 3.5 3586 3.0 3036

**Whiteleather Rex SWD Val 2079 EX-91 2E**

6-00 2x 365d 30400 4.8 1470 3.0 924  
Life: 2130d 133480 4.2 5548 3.2 4246





REGANCREST-PR BARBIE EX-92 GMD DOM  
4TH DAM OF LOT 32



REGANCREST G BROCADE-ET EX-92 DOM  
3RD DAM OF LOT 32

32

## FOUR #2 EMBRYOS

• Worldwide Export Available

### Holstein Plaza Contacts:

Steve Mower +1 240-520-5906

Jennifer Dingbaum +1 320-250-2412

### Pine-Tree OHare-P-ET

71178706 \*PO \*TV \*TL \*TY

PTA +1946M +51F +52P 75%R 8/13

PTA +673NM\$ +5.5PL 2.80SCS +.8DPR

PTA +1.82T +1.49UDC +2.00FLC 75%R

GTPI +2174G / gRZG +144

### No-Limit Shmrock Brownie-ET

141889168 Born: May 3, 2012

GTPI+2111 +1050M +37F +34P +3.30T

### Co-Op O-Style Oman Just-ET

137611441 GM 12/11 \*TR \*TV \*TL \*TY

PTA +2095M +43F +53P 99%R 8/13

PTA +1.54T +1.22UDC +2.11FLC 95%R

GTPI +2212G

### Hickorymea Signif Ohio-P-ET

140759222 Very Good-85

### Ladys-Manor PL Shamrock-ET

68977120 Very Good-85 \*TR \*TV \*TL \*TY

PTA +1984M +64F +52P 82%R 8/13

PTA +2.78T +2.22UDC +.99FLC 77%R

GTPI +2286G

### Farnear Brocades Brita-ET

66840515 Very Good-85 VG-MS @ 2-11

2-06 2x 305d 24050 4.0 972 3.5 840

• sired by: Gen-Mark Stmatic Sanchez

### 3rd thru 10th Dams

**Regancrest G Brocade-ET EX-92 DOM**

4-00 2x 365d 38890 3.9 1517 3.5 1346

**Regancrest-PR Barbie-ET**

EX-92 GMD DOM

2-06 2x 365d 31690 3.9 1237 3.3 1050

• HM All-American Junior 3-Yr Old 2004

• Former #1 Type Cow

**Regancrest Juror Brina-ET EX-92 GMD**

4-04 2x 365d 40640 3.6 1478 2.8 1140

• Member Nom AA Best 3 Females 2000

• Res Grand Champ Iowa State Show 2000

**Regancrest Aerostar Bert-ET**

EX-90 GMD DOM

5-02 2x 365d 37790 3.6 1357 3.0 1143

Life: 1305d 109350 3.7 4031 3.1 3350

**Regancrest Mark Chairman Bea**

EX-91 2E GMD

7-09 2x 365d 33630 3.8 1276 2.9 988

Life: 2036d 140130 4.1 5711 3.1 4350

**Regancrest Board Chairman Bea EX-90**

5-09 2x 365d 26010 4.1 1059 3.2 835

**Regancrest Apache Standout Bea VG-86**

4-10 2x 320d 19070 4.0 766

Life: 2432d 131940 3.6 4744

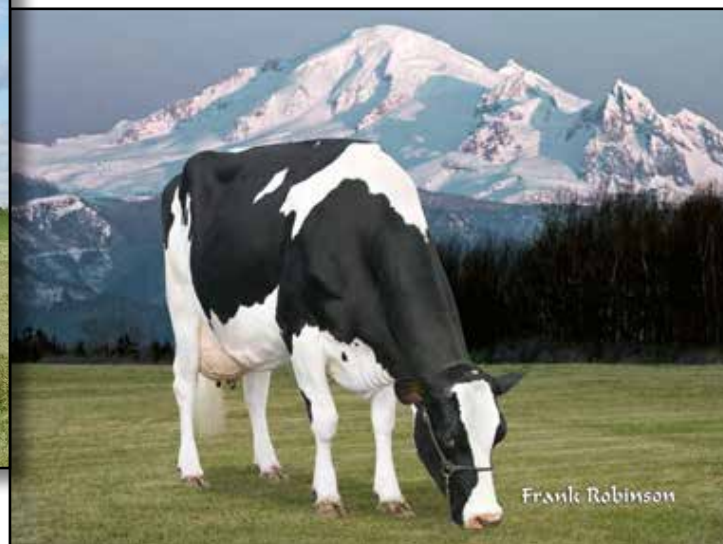
**Regancrest Standout Bertrand VG-85**

4-01 2x 355d 17460 3.3 571





**RONELEE BOLIVER DREARY VG-86 DOM**  
2ND DAM OF LOT 33



**RONELEE OUTSIDE DABBLE-ET EX-91 2E GMD DOM**  
3RD DAM OF LOT 33

33

## FOUR #1 and TWO #2 EMBRYOS

• Worldwide Export Available

### Holstein Plaza Contacts:

Steve Mower +1 240-520-5906

Jennifer Dingbaum +1 320-250-2412

### Stantons Catalyst

107535541

PTA +1877M +85F +57P 74%R 8/13

PTA +7.4PL 2.77SCS +1.1DPR

PTA +2.46T +2.47UDC +1.92FLC 71%R

GTPI +2455G

### T-Gen-AC Drearys Emotion-ET

71818799

Born: June 21, 2012

GTPI+2195 +1784M +51F +52P +2.04T

### Ladys-Manor PL Shamrock-ET

68977120 Very Good-85 \*TR \*TV \*TL \*TY

PTA +1984M +64F +52P 82%R 8/13

PTA +2.78T +2.22UDC +0.99FLC 77%R

GTPI +2286G

### Stantons Freddie Cameo

11083913 Very Good-85-2YR

2-02 3x 365d 30481 4.9 1499 3.5 1065

### Genervations Epic-ET

11104016C \*TV \*TL \*TY \*TD

PTA +1785M +53F +54P 76%R 8/13

PTA +2.59T +1.97UDC +2.53FLC 75%R

GTPI +2332G

### Ronelee Boliver Dreary

139531796 Very Good-86 @ 3YR DOM

GTPI+2098 +1149M +57F +43P +2.18T

2-04 2x 305d 23999 3.8 915 3.4 822

• Maternal sister to Domain

• Dam to Deligence & Deligent @ TAG

• Dam to several high testing daughters

### 3rd thru 8th Dams

#### Ronelee Outside Dabble

EX-91 2E GMD DOM

5-03 3x 365d 44530 3.6 1612 3.0 1313

Life: 1418d 146440 3.6 5215 3.2 4653

#### Ronelee Rudolph Dimple

EX-93 EEEEE 2E DOM

5-08 3x 365d 45290 3.7 1713 3.1 1428

Life: 1582d 164010 3.6 5900 3.2 5284

#### Select Mark Dolly

EX-95 EEEEE 4E GMD DOM

6-07 3x 365d 45870 4.0 1846 3.1 1431

Life: 3295d 276300 3.6 9992 3.2 8964

#### Select Southwind Dinah EX-91 EEEEE 2E

5-11 3x 365d 30080 3.7 1124 3.3 981

Life: 1505d 103810 3.9 4010 3.3 3456

#### Select Mars Tony Diana VG-86 VG-MS

3-04 2x 365d 26200 4.2 1112 3.5 916

#### Dinah Select Wayne Dixie VG-85

3-07 2x 305d 23460 4.0 935 3.4 789





**BROOKVIEW-E MOVIESTAR-ET VG-86 VG-MS**  
2ND DAM OF LOT 34



**CARTERS-CORNER SHOT MELODY EX-90 EEEEEV DOM**  
3RD DAM OF LOT 34

**34**

## FOUR #1 EMBRYOS

• Worldwide Export Available

### Holstein Plaza Contacts:

Steve Mower +1 240-520-5906

Jennifer Dingbaum +1 320-250-2412



### Ladys-Manor Shakespeare (SEXED)

71592934 \*TV \*TL \*TY \*TD

PTA +1454M +75F +53P 74%R 8/13

PTA +5.8PL 2.47SCS +0.2DPR

PTA +3.28T +2.94UDC +2.73FLC 73%R

GTPI +2450G

### Ms Moviestar Mavis

71494860 Born: September 5, 2012

GTPI+2155 +1248M +45F +32P +2.04T

• Full sister to Mr Moviestar Mardi Gras

GTPI+2505 at Jetstream Genetics

• Maternal sister to Mr Moviestar Model

GTPI+2180 gRZG+158 at Jetstream Genetics

• Will be pictured next week

### Generations Epic-ET

11104016C \*TV \*TL \*TY \*TD

PTA +1785M +53F +54P 76%R 8/13

PTA +2.59T +1.97UDC +2.53FLC 75%R

GTPI +2332G

### Ladys-Manor Ruby D Shawn

62360741 Excellent-90 EX-MS DOM

GTPI+2125 +867M +58F +31P +3.45T

1-10 2x 365d 29690 4.5 1324 3.5 1042

### Mountfield SSI Dcy Mogul

3006972816 \*TV \*TL \*TY \*TD

PTA +1384M +80F +50P 77%R 8/13

PTA +3.09T +3.15UDC +3.22FLC 77%R

GTPI+2428G

### Brookview-E Moviestar-ET

140301401 Very Good-86 VG-MS

GTPI+2023 +730M +41F +28P +2.21T

2-07 2x 365d 31200 4.6 1440 3.4 1069

### 3rd thru 9th Dams

#### Carters-Corner Shot Melody

EX-90 EEEEEV DOM

2-03 2x 305d 28070 4.7 1312 3.4 957

#### Pine-Tree Missy Melinda-ET VG-85 DOM

2-02 2x 365d 29259 4.5 1323 3.4 996

6-02 2x 176d 18750 4.3 798 3.2 600

#### Wesswood-HC Rudy Missy-ET

EX-92 3E DOM

4-11 3x 365d 40880 4.1 1665 3.2 1308

Life: 1262d 119610 4.1 4885 3.2 3804

#### Wesswood Elton Mimi EX-90 GMD DOM

3-05 2x 365d 35380 3.3 1160 3.2 1121

#### Wesswood Mandingo Ivy VG-87 VEEVV

6-05 2x 365d 36330 3.6 1305 3.0 1087

Life: 1835d 144060 3.4 4933 3.1 4412

#### Wesswood Astro Matt Esther

VG-87 GMD DOM

6-08 2x 365d 31860 3.5 1125 3.1 982

Life: 1847d 140110 3.6 5029 3.2 4424

#### Wesswood Bell Claudette

VG-87 GMD DOM

9-10 2x 365d 38810 3.6 1383 2.9 1140

Life: 3634d 280980 3.6 9997 3.1 8625





**MS CHASSITY GOLDWYN CASH-ET VG-87-2YR**  
MATERNAL SISTER TO DAM OF LOT 35



**REGANCREST S CHASSITY-ET EX-92 DOM**  
2ND DAM OF LOT 35

**35**

## FIVE #1 EMBRYOS

- Worldwide Export Available

### Holstein Plaza Contacts:

Steve Mower +1 240-520-5906  
Jennifer Dingbaum +1 320-250-2412

### Co-Op Bosside Massey-ET

63026939 \*TV \*TL \*TY  
PTA +1287M +70F +59P 99%R 8/13  
PTA +717NM\$ +3.3PL 2.53SCS +0.7DPR  
PTA +1.98T +2.26UDC +1.52FLC 97%R  
GTPI +2273G

### Ms Chassitys Caroline-ET

70477005 Very Good-86-2YR VG-MS  
GTPI+2174 +1874 +73F +48P +2.39T  
2-03 2x 45d 3613 4.8 174 2.8 101 inc.  
• Will be pictured Friday, Nov. 15

### Maternal brothers to Coverluck

#### Mr Chassity Gold Chip-ET EX-90

GTPI+2090 / PTAT+3.87

#### Mr Chassity Colt 45-ET \*RC \*PO

GTPI+2123 / PTAT+3.20

### Mascol-ET

578891748 \*TV \*TL  
PTA +410M +49F +34P 99%R 8/13  
PTA +0.62T +0.53UDC +0.70FLC  
GTPI +1888G

### Coyne-Farms Yelena CRI-ET

61376428 Very Good-85 GMD DOM  
1-11 3x 305 31610 3.6 1153 3.2 1016

### Roylane Socra Robust-ET

64966739 Very Good-88 \*TR \*TV \*TL \*TD  
PTA +1425M +88F +52P 93%R 8/13  
PTA +1.62T +1.54UDC +1.76FLC  
GTPI +2230G

### Regancrest S Chassity-ET

62496899 Excellent-92 EEEVE DOM  
GTPI+2071 +1592M +69F +35P +3.44T  
3-10 2x 365d 42280 4.3 1798 2.7 1150  
2-01 2x 365d 36680 4.3 1567 3.3 1193  
Life: 1071d 105520 4.2 4383 3.0 3158  
• Sold for \$1,500,000 as a package with sons  
& dtrs in the 2009 Int'l Intrigue Sale  
• Global Cow of the Year 2011

### 3rd thru 10th Dams

#### Regancrest Cinderella-ET

EX-92 EEEEE 2E GMD DOM  
5-00 2x 365d 34220 4.1 1418 3.1 1074  
• 1st Sr 3-Yr-Old Cow Midwest Sprg/Nat 2007  
• 1st Sr 2-Yr-Old Cow Mideast Fall/Nat 2006

#### Regancrest-PR Barbie-ET

EX-92 GMD DOM  
2-06 2x 365d 31690 3.9 1237 3.3 1050  
• HM All-American Junior 3-Yr Old 2004  
• Former #1 Type Cow

#### Regancrest Juror Brina-ET EX-92 GMD

4-04 2x 365d 40640 3.6 1478 2.8 1140  
• Member Nom AA Best 3 Females 2000  
• Res Grand Champ Iowa State Show 2000

#### Regancrest Aerostar Bert-ET

EX-90 GMD DOM  
5-02 2x 365d 37790 3.6 1357 3.0 1143  
Life: 1305d 109350 3.7 4031 3.1 3350

#### Regancrest Mark Chairman Bea

EX-91 2E GMD  
7-09 2x 365d 33630 3.8 1276 2.9 988  
Life: 2036d 140130 4.1 5711 3.1 4350

#### Regancrest Board Chairman Bea EX-90

5-09 2x 365d 26010 4.1 1059 3.2 835

#### Regancrest Apache Standout Bea VG-86

4-10 2x 320d 19070 4.0 766  
Life: 2432d 131940 3.6 4744

#### Regancrest Standout Bertrand VG-85

4-01 2x 355d 17460 3.3 571





**KHW REGIMENT APPLE-RED-ET EX-95 EEEEE DOM**  
4TH DAM OF LOT 36



**MS DELICIOUS APPLE-RED-ET EX-92 EEEEE**  
3RD DAM OF LOT 36

**36**

**Holstein Plaza Contacts:**

Steve Mower +1 240-520-5906  
Jennifer Dingbaum +1 320-250-2412

**Kulp-Dale Golden PP-Red-ET**

70805600 \*RC \*PP \*TL \*TD  
PTA +748M +17F +41P 72%R 8/13  
PTA +2.9PL 2.82SCS +0.7DPR  
PTA +2.08T +1.94UDC +1.64FLC 71%R  
GTPI +1968G

**Tramilda-N Larson Dreams-ET \*RC**

142069192 Born: September 15, 2012  
GTPI+2010 +1274M +57F +48P +2.52T

**FIVE #1 EMBRYOS**

• Worldwide Export Available

**Sandy-Valley Colt P-Red-TW**

68731810 \*PO \*TV \*TL \*TY \*TD  
PTA +758M +9F +27P 74%R 8/13  
PTA +1.88T +2.12UDC +1.44FLC 76%R  
GTPI +1971G

**Kulp-Dale Gold Rush-ET**

65793924 Very Good-86 \*RC \*PO  
2-03 2x 249d 16609 4.0 670 3.4 651 inc.

**Willsbro Larson-ET \*RC**

GBR 642862  
PTA +1543M +53F +53P 76%R 8/13  
PTA +3.05T +1.57UDC +3.03FLC 74%R  
GTPI+1911G

**Ms D Apple Dreamer-ET**

69822169 Very Good-85-2YR  
GTPI+1993 +599M +45F +19P +3.18T  
Sired by: Picston Shottle  
• Dam of Hahncrest Apple Jax-Red-ET \*PO  
GTPI+2236 at Accelerated

**3rd thru 10th Dams**

**Ms Delicious Apple-Red-ET EX-92 EEEEE**  
2-02 2x 365d 26460 3.9 1036 3.3 871  
**KHW Regiment Apple-Red-ET**  
EX-95 EEEEE DOM  
4-01 2x 365d 35750 4.7 1682 3.7 1314  
• Grand Champ, Grand Int'l R&W Show 2011  
• Unanimous All-American Jr 2-Yr-Old 2006  
• All-American R&W Jr 2-Yr-Old 2006  
• HHM All-American Jr 3-Yr-Old 2007  
• Nom All-American R&W 5-Yr-Old 2009  
• Res Grand Champ, Royal Winter R&W 2009  
• HI World Champion R&W Cow 2010  
• \$1,000,000 Sale Topper Global Glamour 2008  
**Kamps-Hollow Altitude-ET**  
EX-95 EEEEE 2E DOM  
7-00 2x 305d 34450 4.5 1562 3.4 1163  
• Dam to proven bulls Advent, Jotan & Acme  
• Red Impact Cow of the Year 2009  
**Clover-Mist Alisha-ET \*RC EX-93 3E DOM**  
8-07 2x 365d 36920 4.2 1553 3.4 1258  
Life: 2999d 226470 4.7 10659 3.6 8149  
**Clover-Mist Augy Star-ET \*RC**  
EX-94 4E DOM  
7-10 3x 365d 43140 5.0 2136 3.3 1421  
Life: 2486d 206250 4.7 9793 3.5 7187  
**D-R-A August EX-96 EEEE 4E DOM**  
8-05 2x 365d 27460 4.3 1187 3.2 871  
Life: 3443d 190200 4.4 8281 3.3 4457  
• Nominated All-American Aged Cow 1986  
**D-R-A Ideal Precious Leader EX-90 2E**  
7-06 2x 358d 20090 3.9 787 3.4 675  
**D-R-A Princess Lad Leader EX-90 3E**  
9-05 2x 305d 19160 4.2 809





**JERLAND ADVENT GRETA-RED-ET VG-87-2YR**  
DAM OF LOT 37



**SCIENTIFIC GRACE-RED-ET EX-91 EEEEE**  
2ND DAM OF LOT 37

# 37

## FIVE #1 EMBRYOS

- Worldwide Export Available

### Holstein Plaza Contacts:

Steve Mower +1 240-520-5906  
Jennifer Dingbaum +1 320-250-2412

### Lookout P Redburst-Red-ET

106030980C \*TV \*TL \*TY \*TD  
PTA +285M +13F +24P 76%R 8/13  
PTA +2.5PL 2.87SCS +0.3DPR  
PTA +3.23T +2.93UDC +2.25FLC 75%R  
GTPI +1961G

### Jerland Advent Greta-Red-ET

140556566 Excellent-90 EX-MS @ 4-01  
2-04 2x 154d 8308 4.8 402 3.5 292 inc.  
• 9th generation EX Red Roxy!

Maternal sister to Greta

### Jerland Tal Giovanna-Red-ET EX-91

- 6th 4-Year-Old, Grand Int'l R&W Show 2013
- Res Grand Champ, MN State Fair R&W 2013
- Grand Champ, MN State R&W Show 2013
- Res All-Minnesota 4-Year-Old 2013
- Grand Champion, Midwest Spring Nat'l R&W

### Scientific Destry-ET

138122625 Very Good-87 \*RC \*TV \*TL  
PTA -553M -2F +8P 96%R 4/12  
PTA +3.04T +2.82UDC +1.92FLC  
GTPI +1921G

### Regancrest MB Breyell-ET

63606863 Very Good-87-2YR-CAN  
2-03 2x 365d 31876 3.1 994 3.1 992

### KHW Kite Advent-Red-ET

133002953 Excellent-95 \*TV \*TL \*TD  
PTA -1012M -11F -21P 99%R 8/13  
PTA +2.60T +2.27UDC +1.65FLC  
GTPI +1574G

### Scientific Grace-Red-ET

132856773 Excellent-91 EEEEE  
5-00 2x 365d 28530 4.4 1260 3.7 1058  
3-04 3x 365d 27990 3.7 1043 3.9 1081  
2-03 3x 358d 27020 3.8 1040 3.4 926  
• First 8th Generation Excellent Red Roxy!  
• Nominated All-American 2007 & 2008  
• 1st Aged Cow, Midwest Spring Nat'l 2008  
• 3rd 5-Yr Old, Grand Int'l R&W Show 2007

### 3rd thru 10th Dams

**Scientific Raes Hope-Red-ET EX-92**  
4-03 2x 365d 36894 3.5 1302 3.2 1171  
Life: 1386d 103070 3.5 3655 3.3 3409  
**Scientific Jubilant Rae-ET \*RC EX-90 DOM**  
5-11 3x 365d 38880 4.1 1608 3.4 1329  
Life: 1394d 117590 4.0 4707 3.4 4018  
• Nine EX and 2 All-American Daughters  
**C Hanoverhill Tony Rae**  
EX-96 3E GMD DOM  
6-11 2x 365d 40220 4.1 1661 3.3 1331  
Life: 2247d 166396 4.1 6904 3.4 5612  
• Grand Champion Western National 1993  
**C Hanoverhill TT Roxette-ET**  
EX-94 2E GMD  
10-0 3x 365d 35040 4.3 1519 3.0 1063  
Life: 2104d 164789 4.1 6760 3.1 3587  
**Mil-R-Mor Roxette EX-CAN 30\***  
7-01 2x 365d 24531 4.7 1153  
Life (6 Lacs): 121418 4.7 5728  
**C Glenridge Citation Roxy EX-97 4E GMD**  
10-1 2x 365d 25280 4.2 1060  
Life: 3620d 209784 4.5 9471  
• Queen of the Breed I and II  
**C Norton Court Model Vee EX-90**  
6-06 2x 365d 22483 3.9 875  
Life: 4183d 218629 3.9 8581  
• All-American Produce of Dam 1977, '78, '79  
**Norton Court Reflection Vale**  
VG-85-CAN 5\*  
8-11 2x 332d 20631 3.7 765  
Life (14 Lacs): 249583 3.7 9295





**BUDJON-JK FLANCE ELOPE-ET EX-93 2E**  
2ND DAM OF LOT 38



**KRULL BROKER ELEGANCE EX-96 3E GMD DOM**  
4TH DAM OF LOT 38



## FIVE #1 EMBRYOS

• *Worldwide Export Available*

### Holstein Plaza Contacts:

Steve Mower +1 240-520-5906

Jennifer Dingbaum +1 320-250-2412

### Apples Absolute-Red-ET

139358472 Excellent-92 \*CV \*TL \*TY \*TD  
PTA -1400M +22F -2P 97%R 8/13  
PTA -0.6PL 3.38SCS -3.4DPR  
PTA +3.92T +3.56UDC +2.86FLC 95%R  
GTPI +1585G

### Cottoncrest Ad Expression-ET \*RC

138587075 Excellent-92 EEEVE  
2-01 2x 305d 22620 3.1 709 3.0 687  
3-02 2x 302d 24940 3.6 891 3.0 747  
5-04 2x 305d 29240 3.3 951 2.9 856

### Ladino Park Talent-Imp-ET \*RC

AUS 930377 \*TV \*TL  
PTA -252M -32F +3P 99%R 8/13  
PTA +2.15T +2.33UDC +1.13FLC  
GTPI +1436G

### KHW Regiment Apple-Red-ET

135511521 Excellent-95 2E DOM  
4-01 2x 365d 35750 4.7 1682 3.7 1314  
• *Grand Champ, Grand Int'l R&W Show 2011*

### KHW Kite Advent-Red-ET

133002953 Excellent-95 \*TV \*TL \*TD  
PTA -1012M -11F -21P 99%R 8/13  
PTA +2.60T +2.27UDC +1.65FLC  
GTPI +1574G

### Budjon-JK Flance Elope-ET

135096031 Excellent-93 EEEEE 2E  
2-02 2x 365d 26370 3.8 1000 3.2 729  
4-01 2x 365d 32840 4.1 1344 3.2 1059  
5-07 2x 365d 28180 4.2 1179 3.2 915  
6-11 2x 325d 28420 3.9 1120 2.9 838  
8-00 2x 365d 33710 3.7 1243 2.9 971  
Life: 2224d 170950 4.0 6849 3.0 5204

### 3rd thru 9th Dams

#### Budjon-JK Lee Emotion-ET

VG-86 VG-MS GMD DOM  
2-02 2x 365d 34400 4.8 1656 3.4 1176

#### Budjon-JK Lee Emotion-ET

VG-86 VG-MS GMD DOM  
2-02 2x 365d 34400 4.8 1656 3.4 1176

#### Krull Broker Elegance

EX-96 3E GMD DOM  
5-07 2x 365d 40950 3.7 1522 3.1 1272  
Life: 2356d 183710 3.7 6878 3.2 5919

• *HM All-American Aged Cow 1999*

• *HM All-Canadian Mature Cow 1999*

• *1st International 125,000 lb Cow 2000*

• *2nd Mid-W Spr Nat 4Y Cow 1997*

#### Krull Starbuck Excellency

EX-90 GMD DOM  
3-03 2x 365d 27140 3.5 937 3.4 930

#### Krull TT Excellency EX-90 VEEE DOM

3-02 2x 363d 24319 3.5 862 3.4 829  
Life: 1733d 109780 3.7 4077 3.3 3605

#### Krull Boot Mark Excellency EX-92 2E GMD

6-06 2x 365d 27410 3.8 1040 3.1 868  
Life: 3026d 201440 3.5 7105 3.0 4634

#### Krull Kingstead Excellency EX-92 4E GMD

12-4 2x 323d 21920 3.5 772  
Life: 3364d 179790 3.6 6436





**SPEEK-NJ ATWD DAISY RAE-ET GP-83-2YR**  
DAM OF LOT 39



**SCIENTIFIC DELUXE RAE-ETS EX-91 EX-91-MS**  
2ND DAM OF LOT 39

**39**

**Holstein Plaza Contacts:**

Steve Mower +1 240-520-5906  
Jennifer Dingbaum +1 320-250-2412

**Sonnek Golddust**

70984352 \*TV \*TL \*TY  
PTA +629M +28F +14P 73%R 8/13  
PTA +2.9PL 2.64SCS -0.6DPR  
PTA +4.44T +3.95UDC +2.81FLC 73%R  
GTPI +2105G

**Speek-NJ Atwd Daisy Rae-ET**

70209295 Good Plus-83-2YR  
GTPI+1727 +3.93T +3.01UDC +2.88FLC  
• Should be easy VG next classification 12/19  
• One of the Top PTAT Cows in the Breed

Full sister to Daisy Rae

**Co-Vista Atwood Desire-ET**

Very Good-87 VVVVV @ 2-08  
GTPI+1991 +663M +46F +26P +4.17T  
2-03 2x 305d 22650 3.9 887 3.4 778  
• One of the highest PTAT cows in the breed  
• Dam of a +2467 GTPI Uno daughter!  
• Potential 9th Generation Excellent!  
• Sold as a package in the 2011 Planet  
Holstein Sale for \$200,000

**TWO #1 EMBRYOS**

• Worldwide Export Available

**Mr Chassity Gold Chip-ET**

140145553 Excellent-90 \*TR \*TV \*TL \*TD  
PTA +678M +34F +13P 77%R 8/13  
PTA +3.85T +3.06UDC +3.05FLC 77%R  
GTPI +2053G

**Sonnek Damion Charlie-ET**

138545776 Excellent-92-USA  
3-04 2x 365d 26240 4.0 1050 3.5 992

**Maple-Downs-I G W Atwood-ET**

8956379C Very Good-87 \*TV \*TL \*TY \*TD  
PTA +293M +47F +14P 99%R 8/13  
PTA +4.65T +3.34UDC +3.77FLC 99%R  
GTPI +1770G

**Scientific Deluxe Rae-ETS**

138904205 Excellent-91 EX-91-MS  
2-00 2x 305d 24061 4.0 957 3.3 796  
3-11 2x 305d 29830 3.8 1142 3.4 1008

**3rd thru 10th Dams**

**Scientific Debutante Rae-ET**

EX-92 EEEEE \*RC \*CV  
2-02 2x 365d 32930 4.4 1440 3.4 1132  
• All-American 4-Yr-Old Cow 2005  
• Res Grand Champ, Int'l Show 2005  
• HM All-American Jr 3-Yr-Old Cow 2004  
• Res Grand Champ, Mid-W Sprg/Nat 2004  
• Int Champion, Mid-West Sprg/Nat 2004

**Scientific Jubilant Rae-ET** EX-90 DOM  
5-11 2x 365d 38880 4.1 1608 3.6 1403  
Life: 1394d 117590 4.0 4707 3.6 4242

**C Hanoverhill Tony Rae**

EX-96 3E GMD DOM  
6-11 2x 365d 40220 4.1 1661 3.3 1331  
Life: 2247d 166396 4.1 6904 3.4 5612

• Grand Champion Western National 1993

**Hanoverhill T T Roxette-ET** EX-94 2E GMD

10-0 3x 365d 35040 4.3 1519 3.0 1063  
Life: 2104d 164789 4.1 6760 3.1 3587

**Mil-R-Mor Roxette** EX-CAN 30\*

7-01 2x 365d 24531 4.7 1153  
Life (6 Lacs): 121418 4.7 5728

**C Glenridge Citation Roxy** EX-97 4E GMD

10-1 2x 365d 25280 4.2 1060  
Life: 3620d 209784 4.5 9471

• Queen of the Breed I and II

**C Norton Court Model Vee** EX-90

6-06 2x 365d 22483 3.9 875  
Life: 4183d 218629 3.9 8581

• All-American Produce of Dam 1977, '78, '79

**Norton Court Reflection Vale** VG-85-CAN 5\*

8-11 2x 332d 20631 3.7 765  
Life (14 Lacs): 249583 3.7 9295





R-E-W SL CHARDONAY  
DAM OF LOT 40



REGANCREST S CHASSITY-ET EX-92 DOM  
3RD DAM OF LOT 40

# 40

### Holstein Plaza Contacts:

Steve Mower +1 240-520-5906  
Jennifer Dingbaum +1 320-250-2412



### Seagull-Bay Supersire-ET (SEXED)

69981349 \*TV \*TL \*TY \*TD  
PTA +2387M +112F +77P 75%R 8/13  
PTA +5.8PL 2.80SCS -0.2DPR  
PTA +2.37T +1.73UDC +1.37FLC 75%R  
GTPI +2464G

### R-E-W SL Chardonay-ET

3010991501 Born: June 28, 2012  
GTPI+2182 +1059M +43F +34P +2.98T

## FOUR #1 EMBRYOS

- Worldwide Export Available

### Roylane Socra Robust-ET

64966739 Very Good-88 \*TR \*TV \*TL \*TD  
PTA +1441M +82F +50P 82%R 4/13  
PTA +1.98T +1.96UDC +2.00FLC  
GTPI +2245G

### Ammon-Peachey Shauna-ET

66228178 Very Good-87 VG-MS  
2-01 3x 365d 35120 4.1 1427 3.3 1145

### Glen-Toctin Super Large-ET

140761397 \*TV \*TL TY  
PTA +1419M +32F +42P 77%R 8/13  
PTA +3.22T +2.75UDC +2.32FLC 77%R  
GTPI +2249G

### Courtlane-UR Mac Charm-ET

64045602 Very Good-85 VG-MS DOM  
2-02 2x 365d 30980 4.0 1236 3.1 962

### 3rd thru 11th Dams

**Regancrest S Chassity-ET EX-92 DOM**  
3-10 2x 365d 42280 4.3 1798 2.7 1150  
Life: 1071d 105520 4.2 4383 3.0 3158

- Sold for \$1,500,000 as a package with sons & dtrs in the 2009 Int'l Intrigue Sale

- Global Cow of the Year 2011

### Regancrest Cinderella-ET

EX-92 EEEEE 2E GMD DOM  
5-00 2x 365d 34220 4.1 1418 3.1 1074

- 1st Sr 3-Yr-Old Cow Midwest Sprg/Nat 2007
- 1st Sr 2-Yr-Old Cow Mideast Fall/Nat 2006

### Regancrest-PR Barbie-ET

EX-92 GMD DOM  
2-06 2x 365d 31690 3.9 1237 3.3 1050

- HM All-American Junior 3-Yr Old 2004
- Former #1 Type Cow

### Regancrest Juror Brina-ET EX-92 GMD

4-04 2x 365d 40640 3.6 1478 2.8 1140

- Member Nom AA Best 3 Females 2000
- Res Grand Champ Iowa State Show 2000

### Regancrest Aerostar Bert-ET

EX-90 GMD DOM  
5-02 2x 365d 37790 3.6 1357 3.0 1143

Life: 1305d 109350 3.7 4031 3.1 3350

### Regancrest Mark Chairman Bea

EX-91 2E GMD  
7-09 2x 365d 33630 3.8 1276 2.9 988

Life: 2036d 140130 4.1 5711 3.1 4350

### Regancrest Board Chairman Bea EX-90

5-09 2x 365d 26010 4.1 1059 3.2 835

### Regancrest Apache Standout Bea VG-86

4-10 2x 320d 19070 4.0 766

Life: 2432d 131940 3.6 4744

### Regancrest Standout Bertrand VG-85

4-01 2x 355d 17460 3.3 571





**KHW SBOX AVENA-ET**  
DAM OF LOT 41



**KHW REGIMENT APPLE-RED EX-95 DOM**  
MATERNAL SISTER TO DAM OF LOT 41

**41**

## FIVE #1 EMBRYOS

- Worldwide Export Available

### Holstein Plaza Contacts:

Steve Mower +1 240-520-5906

Jennifer Dingbaum +1 320-250-2412

### Kulp-Dale Golden PP-Red-ET

70805600 \*RC \*PP \*TL \*TD

PTA +748M +17F +41P 72%R 8/13

PTA +2.9PL 2.82SCS +0.7DPR

PTA +2.08T +1.94UDC +1.64FLC 71%R

GTPI +1968G

### KHW Sbox Avena-ET

140960376 Very Good-86 VVEVV @ 2-10

GTPI+1963 +3.12T +2.33UDC +3.33FLC

### Maternal sister to Avena

**KHW Regiment Apple-Red-ET EX-95 DOM**

4-01 2x 365d 35750 4.7 1682 3.7 1314

Life: 1972d 158680 4.8 7683 3.8 6034

- Grand Champ, Grand Int'l R&W Show 2011
- Unanimous All-American Jr 2-Yr-Old 2006
- All-American R&W Jr 2-Yr-Old 2006
- HHM All-American Jr 3-Yr-Old 2007
- Nom All-American R&W 5-Yr-Old 2009
- Res Grand Champ, Royal Winter R&W 2009
- HI World Champion R&W Cow 2010

### Sandy-Valley Colt P-Red-TW

68731810 \*PO \*TV \*TL \*TY \*TD

PTA +758M +9F +27P 74%R 8/13

PTA +1.88T +2.12UDC +1.44FLC 76%R

GTPI +1971G

### Kulp-Dale Gold Rush-ET

65793924 Very Good-86 \*RC \*PO

2-03 2x 249d 16609 4.0 670 3.4 651 inc.

### Dream-Prairie Shadow Boxer

139086241 \*TR \*TV \*TL \*TY \*TD

PTA -23M +48F +23P 99%R 8/13

PTA +2.05T +1.40UDC +1.94FLC 98%R

GTPI+1848G

### Kamps-Hollow Altitude-ET

129136431 Excellent-95 EEEEE 2E DOM

GTPI+2052 -415M +34F +15P +3.20T

2-00 2x 305d 24510 3.8 922 3.7 904

7-00 2x 305d 34450 4.5 1562 3.4 1163

- Dam to proven bulls Advent, Jotan & Acme

### 3rd thru 7th Dams

**Clover-Mist Alisha-ET \*RC EX-93 3E DOM**

8-07 2x 365d 36920 4.2 1553 3.4 1258

Life: 2999d 226470 4.7 10659 3.6 8149

**Clover-Mist Augy Star-ET \*RC**

EX-94 4E DOM

7-10 3x 365d 43140 5.0 2136 3.3 1421

Life: 2486d 206250 4.7 9793 3.5 7187

**D-R-A August EX-96 EEEE 4E DOM**

8-05 2x 365d 27460 4.3 1187 3.2 871

Life: 3443d 190200 4.4 8281 3.3 4457

- Nominated All-American Aged Cow 1986

**D-R-A Ideal Precious Leader EX-90 2E**

7-06 2x 358d 20090 3.9 787 3.4 675

**D-R-A Princess Lad Leader EX-90 3E**

9-05 2x 305d 19160 4.2 809





PIERCE-VALE DANTE R TWEETY EX-90  
DAM OF LOT 42

42

**Holstein Plaza Contacts:**

Steve Mower +1 240-520-5906  
Jennifer Dingbaum +1 320-250-2412

**Morsan Afterburn \*VRC**

9626893C \*TV \*TL \*TY  
PTA +369M +35F +10P 77%R 8/13  
PTA +3.7PL 2.79SCS -0.3DPR  
PTA +2.63T +1.59UDC +2.01FLC 75%R  
GTPI +1835G

**Pierce-Vale Dante R Tweety**

139713411 Excellent-90 EVEVE @ 4-04  
2-00 2x 266d 15080 3.9 595 2.9 437  
2-11 2x 365d 26460 3.8 1005 3.2 842

## FOUR #1 EMBRYOS

• Worldwide Export Available

**Ms Atlees Sht Aftershock-ET**

65249839 \*TV \*TL \*TY \*TD  
PTA +499M +26F +4P 99%R 8/13  
PTA +3.19T +2.54UDC +2.21FLC  
GTPI +1788G

**Stoneden Fools Gold-Red**

7702715C Very Good-88-CAN 2\*  
2-04 3x 365d 38949 3.6 1407 3.0 1177  
4-03 3x 365d 50748 3.8 1942 2.9 1462

**Pierce-Vale Potter Dante-ET**

136747583 \*TV \*TL \*TY  
PTA +880M -3F +10P 94%R 8/13  
PTA +.97T +.93UDC +1.92FLC  
GTPI +1694G

**Castleholm Pierce Tonya-ET**

136365561 Excellent-91 EEEVE  
2-05 2x 365d 20060 4.6 927 3.2 644  
4-00 2x 365d 30310 4.4 1321 3.2 970

**3rd thru 15th Dams**

**Astrahoe R Gibson Reagan EX-92 EEEVE**  
2-06 2x 356d 24300 3.6 884 2.9 713  
3-08 2x 365d 28050 3.8 1059 3.1 868  
**Pinehurst Royal Rosa-ET EX-91 2E**  
3-10 3x 365d 41395 3.3 1358 2.8 1145  
Life: 1212d 115400 3.5 4073 3.1 3593  
**Pinehurst Roulade EX-92 EEEEE 2E**  
5-00 3x 365d 35130 3.6 1271 3.2 1115  
Life: 1761d 142070 3.8 5395 3.3 4705  
**Pinehurst Sweet Cleo EX-90 EEEVE**  
6-00 3x 365d 40380 4.4 1776 3.2 1305  
**Pinehurst Sweet Freedom EX-90 VEVE**  
5-07 3x 330d 34520 4.3 1500 3.1 1084  
**Pinehurst Sweet Delite EX-91 3E GMD**  
8-10 3x 365d 28460 4.2 1194 3.2 917  
Life: 2228d 151600 4.0 6116 3.2 4907  
**Pinehurst Rapture EX-96 4E GMD**  
8-02 3x 365d 30370 4.2 1290 3.1 948  
Life: 2297d 160790 3.9 6337 3.0 2469  
**Pinehurst Fragrance EX-90 2E**  
4-8 3x 365d 34490 3.6 1234  
**Hayssen Fond Ariel EX-90 2E**  
8-06 2x 328d 23330 3.2 753  
**Hayssen D V Audrey EX-90 2E**  
9-03 2x 365d 23670 4.4 1035  
**Whirlhill Q Rag Apple Ariel EX-92**  
6-02 2x 365d 26755 4.2 1134  
**Arlite Posch EX-92 GMD**  
5-03 2x 365d 21193 3.7 779  
**Audrey Posch EX-93 GMD**  
14-2 2x 365d 25572 3.7 948





**PIERCE-VALE DURHM R TOBI-ET EX-90  
DAM OF LOT 43**

**43**

**Holstein Plaza Contacts:**

Steve Mower +1 240-520-5906  
Jennifer Dingbaum +1 320-250-2412

**Gillette Windbrook**

7816429C 91%RHA-NA \*TV \*TL \*TY \*TD  
PTA +938M +57F +34P 91%R 8/13  
PTA +309NM\$ +0.1PL 2.97SCS -1.9DPR  
PTA +2.71T +2.06UDC +2.64FLC  
GTPI +1891G

**Pierce-Vale Durhm R Tobi-ET**

139394515 Excellent-90 EEVVE @ 3-07  
1-11 2x 365d 23280 3.7 870 3.2 747  
3-03 2x 365d 29270 3.8 1102 3.2 935

**FOUR #1 EMBRYOS**

• *Worldwide Export Available*

**Gillette Brilea F B I-ET**

89524C EX-94-CAN EXTRA'05 \*TV \*TL  
PTA +1508M +40F +36P 99%R 8/13  
PTA +1.86T +1.30UDC +1.54FLC  
GTPI +1766G

**Gillette Blitz 2nd Wind-ET**

7352248C VG-88-CAN 34\*  
2-02 3x 365d 39096 3.6 1422 3.0 1182

**Regancrest Elton Durham**

2250783 EX-90 100%RHA-NA \*TR \*CV \*TL  
PTA -257M -32F +5P 99%R 8/13  
PTA +2.46T +2.23UDC +2.09FLC  
GTPI +1584G

**Castleholm Pierce Tonya-ET**

136365561 Excellent-91 EEVVE  
2-05 2x 365d 20060 4.6 927 3.2 644  
4-00 2x 365d 30310 4.4 1321 3.2 970

**3rd thru 15th Dams**

**Astrahoe R Gibson Reagan EX-92 EEVVE**  
2-06 2x 356d 24300 3.6 884 2.9 713  
3-08 2x 365d 28050 3.8 1059 3.1 868  
**Pinehurst Royal Rosa-ET EX-91 2E**  
3-10 3x 365d 41395 3.3 1358 2.8 1145  
Life: 1212d 115400 3.5 4073 3.1 3593  
**Pinehurst Roulade EX-92 EEEEE 2E**  
5-00 3x 365d 35130 3.6 1271 3.2 1115  
Life: 1761d 142070 3.8 5395 3.3 4705  
**Pinehurst Sweet Cleo EX-90 EEVEV**  
6-00 3x 365d 40380 4.4 1776 3.2 1305  
**Pinehurst Sweet Freedom EX-90 VEVE**  
5-07 3x 330d 34520 4.3 1500 3.1 1084  
**Pinehurst Sweet Delite EX-91 3E GMD**  
8-10 3x 365d 28460 4.2 1194 3.2 917  
Life: 2228d 151600 4.0 6116 3.2 4907  
**Pinehurst Rapture EX-96 4E GMD**  
8-02 3x 365d 30370 4.2 1290 3.1 948  
Life: 2297d 160790 3.9 6337 3.0 2469  
**Pinehurst Fragrance EX-90 2E**  
4-8 3x 365d 34490 3.6 1234  
**Hayssen Fond Ariel EX-90 2E**  
8-06 2x 328d 23330 3.2 753  
**Hayssen D V Audrey EX-90 2E**  
9-03 2x 365d 23670 4.4 1035  
**Whirlhill Q Rag Apple Ariel EX-92**  
6-02 2x 365d 26755 4.2 1134  
**Arlite Posch EX-92 GMD**  
5-03 2x 365d 21193 3.7 779  
**Audrey Posch EX-93 GMD**  
14-2 2x 365d 25572 3.7 948



# TERMS and CONDITIONS

## GENERAL:

- These terms are valid for all agreements made through this sale.
- The organization of the sale is done by Holstein Plaza, part of AMS Genetics International LLC.
- The party, which offers embryos in this sale will be named after this as the "seller" and the party who buys through this sale and gets the sale item assigned, will be hereinafter identified as the "buyer".
- The organization will only act as an intermediary in the realization from a (purchase) agreement between seller and buyer.

## HOW DOES THE SALE WORK:

- All embryos sell with reasonable starting bid.
- The bid price is the per embryo price. If a lot has four embryos and the price is \$500.00 that means the lot price is \$2,000.00.
- When you place a bid, you agree to pay for the item if you're the winning bidder.
- All embryos are froze DT unless otherwise noted in catalog.
- All embryos are available for immediate shipment unless otherwise noted in catalog.
- There are two ways of placing a bid: internet ([www.holsteinplaza.com](http://www.holsteinplaza.com)) or via one of the listed Holstein Plaza contact persons.
- The bids are made in US dollars.
- When you place a bid, you enter the maximum amount you're willing to pay for the item. The other bidders and the sale organization will not be able to see your maximum bid. Through this Proxy bidding system, the Holstein Plaza auction system will increase your bid to the next lowest price when another user bids on the same item. The proxy bidding process continues until your maximum bid amount is reached or the auction ends. Every bidder is bound to his bid.
- The sale is using the popcorn bid system/5-minute rule ([click here for more information on the popcorn bid system/5-minute rule](#)). Until that moment bids will be accepted.
- All risks of the embryos are the responsibility of the buyer once the embryos are delivered to the buyer.
- The transportation of embryos from the seller to the buyer will take place as soon as possible after the sale, but not before complete payment as invoiced from AMS Genetics is received from the successful buyer.
- AMS Genetics will coordinate the paperwork and transfers with Holstein.

## PAYMENT:

- Payment for all purchases is due within ten days of sale.
- Sale invoices will be sent via e-mail or fax following the conclusion of the sale.
- Embryo release forms are issued once proper payment has been received and processed by AMS Genetics.
- Payment will not be released to the seller until AMS Genetics has received proper transfer paperwork.
- Holstein Plaza charges a buyer's commission of \$50 per embryo to include all necessary paperwork; note, this fee does not include shipping.
- International buyers are responsible for shipping the embryos. Buyers will be contacted after the sale about their wishes and requirements for exporting the embryos.
- All embryos needing international shipment will be charged a flat fee of \$150 per lot for export documentation.
- AMS Genetics can handle export and shipping. In case export is being done through AMS Genetics an additional \$50 export fee per embryo will be charged. This flat fee does not cover transport. Buyer should arrange shipping within 60 days of the ending sale date.

## EXCLUDING LIABILITY:

- The organization cannot be held responsible for errors on the internet site, sale catalog or in the advertisements.
- The organization cannot be held responsible for visual or non visual regardless the size or nature of such defect of the sold item.
- The organization does not take any responsibility for damage to persons or cases, which has arisen because of or connected to the sale.
- The cow indexes mentioned therein have been calculated or converted by the herdbook in the country the donor cow is housed in accordance with the current methods. All official pedigrees of sale animals can be seen.
- All frozen embryos are rated first class by official and registered ET veterinarians unless stated different on the website. In case embryos sold as first class after thawing turn out as class two or lower and not end in a pregnancy, the seller will be responsible for a refund, either in the form of an embryo with similar pedigree value or the purchase amount for the embryo. It is of vital importance that any claim is accompanied with an official statement in English from a recognized ET veterinarian. This should be sent to Holstein Plaza.
- Every bidder and seller is held to conform to the auction conditions. The act of bidding and consigning implicates knowledge and acceptance of these conditions.
- The organization can never be held responsible in case the embryos cannot be exported no matter what reason.