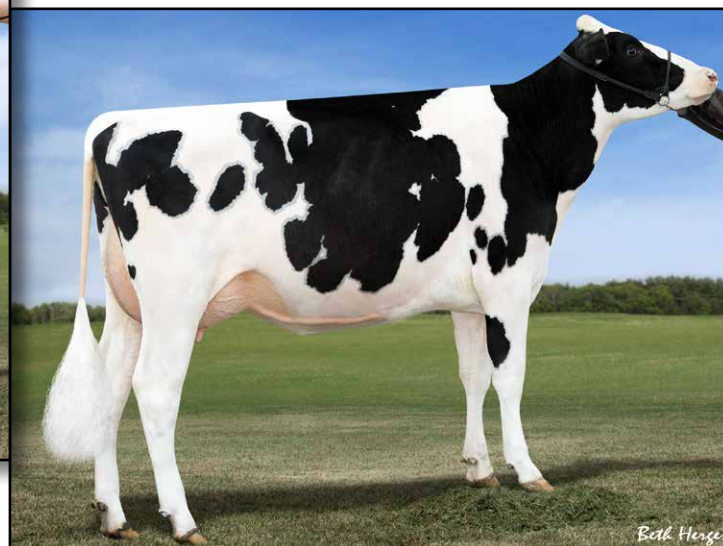




MS BOYANA UNO BRINLEY-ET
DAM OF LOT 1



FARNEAR-TBR BOWSR BOYANA VG-85 VG-MS
2ND DAM OF LOT 1



FOUR #1 EMBRYOS

• Worldwide Export Available

Holstein Plaza Contacts:

Steve Mower +1 240-520-5906

Jennifer Dingbaum +1 320-250-2412

S-S-I Mogul Defender-ET

3009554569 *TV *TL *TY *TD

PTA +1379M +70F +55P 73%R 8/13

PTA +4.9PL 2.67SCS +0.6DPR

PTA +3.55T +3.57UDC +3.47FLC 73%R

GTPI +2485G

Ms Boyana Uno Brinley-ET

71494817 Born: August 6, 2012

GTPI+2409 +912M +50F +39P +4.07T

Mountfield SSI Dcy Mogul

3006972816 *TV *TL *TY *TD

PTA +1384M +80F +50P 77%R 8/13

PTA +3.09T +3.15UDC +3.22FLC 77%R

GTPI+2428G

Regan-BH-ALH M Dannah

66625308 Very Good-88

2-00 3x 305d 26060 3.6 931 3.2 845

Amighetti Numero Uno-ET

ITA 17990915143 *TV *TL *TY

PTA +971M +88F +46P 77%R 8/13

PTA +2.92T +2.69UDC +1.92FLC 76%R

GTPI +2462G

Farnear-TBR Bowsr Boyana

69822164 Very Good-85 VG-MS @ 2-08

GTPI+2158 +911M +12F +34P +3.49T

2-02 2x 183d 12580 6.1 773 2.9 371 inc.

3rd thru 11th Dams

Klassic Mac Barb-ET VG-85

2-05 2x 365d 30439 4.0 1206 3.5 1067

Regancrest Barbi-ET EX-90 DOM

5-00 2x 305d 27379 3.2 869 3.5 948

Regancrest-PR Barbie-ET

EX-92 GMD DOM

2-06 2x 365d 31690 3.9 1237 3.3 1050

• HM All-American Junior 3-Yr Old 2004

• Former #1 Type Cow

Regancrest Juror Brina-ET EX-92 GMD

4-04 2x 365d 40640 3.6 1478 2.8 1140

• Member Nom AA Best 3 Females 2000

• Res Grand Champ Iowa State Show 2000

Regancrest Aerostar Bert-ET

EX-90 GMD DOM

5-02 2x 365d 37790 3.6 1357 3.0 1143

Life: 1305d 109350 3.7 4031 3.1 3350

Regancrest Mark Chairman Bea

EX-91 2E GMD

7-09 2x 365d 33630 3.8 1276 2.9 988

Life: 2036d 140130 4.1 5711 3.1 4350

Regancrest Board Chairman Bea EX-90

5-09 2x 365d 26010 4.1 1059 3.2 835

Regancrest Apache Standout Bea VG-86

4-10 2x 320d 19070 4.0 766

Life: 2432d 131940 3.6 4744

Regancrest Standout Bertrand VG-85

4-01 2x 355d 17460 3.3 571



AMMON-PEACHEY SHAUNA-ET VG-87 88-MS
DAM OF LOT 2



AMMON-PEACHEY SHAUNA-ET VG-87 88-MS
DAM OF LOT 2

2

Holstein Plaza Contacts:

Steve Mower +1 240-520-5906
Jennifer Dingbaum +1 320-250-2412

Cookiecutter Petron Halogen

3008710387 *TV *TL *TY *TD
PTA +1063M +59F +41P 72%R 8/13
PTA +8.1PL 2.41SCS +4.1DPR
PTA +2.86T +3.11UDC +1.34FLC 72%R
GTPI +2546G

Ammon-Peachey Shauna-ET

66228178 Very Good-87 88-MS @ 2-04
GTPI+2176 +1829M +70F +60P +2.55T
2-01 3x 365d 35116 4.1 1427 3.3 1146
• 1st Choice Females have sold for \$102,000 and \$100,000
• HUGE Bull Dam, several sons in A.I. incl.: #1 Supersire (+2464G Robust); MVP (+2432G Mogul), Diamond & Platinum (+2378G Snowman), Headliner (+2344G Robust) Sargeant (+161gRZG Freddie)
• Voted World's Favorite Planet daughter by Hotspots readers!

THREE #1 IVF EMBRYOS

• Available for Export ONLY; no U.S. & CA shipment

Maternal sisters to Lot 2

Seagull-Bay Sh Maureen-ET (s. Numero Uno)
GTPI+2440 +800NM\$ +3.10T
Seagull-Bay Sh Miranda-ET (s. Mogul)
GTPI+2429 +890NM\$ +2.42T
Seagull-Bay Sh Mylady (s. Numero Uno)
GTPI+2409 +825NM\$ +2.79T
Seagull-Bay Sh Maddy-ET (s. Mogul)
GTPI+2408 +716NM\$ +3.60T

Welcome Super Petrone-ET

69207641 *TR *TV *TL *TY *TD
PTA +1105M +47F +30P 75%R 8/13
PTA +2.25T +2.32UDC +1.67FLC 75%R
GTPI +2296G

Cookiecutter MOM Halo-ET

3007069733 Very Good-88 EX-MS @ 2-09
2-00 3x 365d 35410 5.2 1832 3.5 1241

Ensenada Taboo Planet-ET

60597003 EX-90 GM 12/11 *TR *TV *TL *TY
PTA +2216M +70F +66P 99%R 4/13
PTA +1.93T +1.44UDC -.47FLC
GTPI +2176G

Pine-Tree Martha Sheen-ET

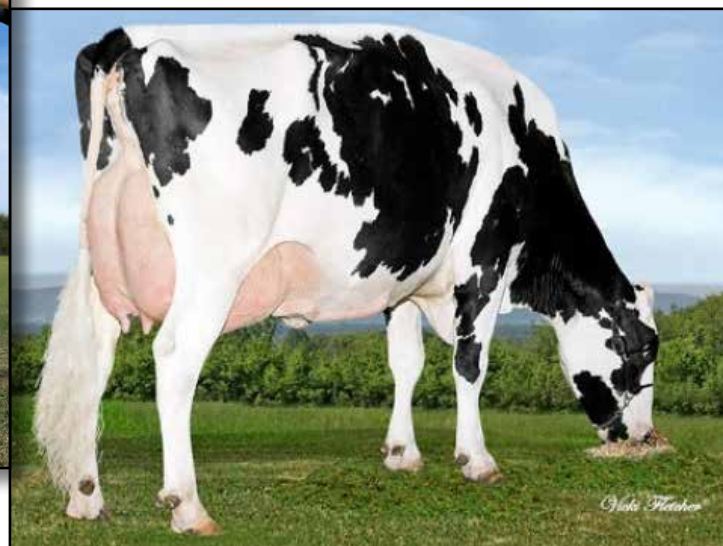
62443682 Very Good-86 VG-MS DOM
IM GTPI+2026 +659M +59F +33P
1-11 3x 365d 31210 4.2 1305 3.3 1027

3rd thru 8th Dams

Pine-Tree Missy Martha-ET VG-86 DOM
2-02 3x 365d 34730 3.6 1266 3.1 1070
Wesswood-HC Rudy Missy-ET
EX-92 3E DOM
4-11 3x 365d 40880 4.1 1665 3.2 1308
Life: 1262d 119610 4.1 4885 3.2 3804
Wesswood Elton Mimi EX-90 GMD DOM
3-05 2x 365d 35380 3.3 1160 3.2 1121
Wesswood Mandingo Ivy VG-87 VEEVV
6-05 2x 365d 36330 3.6 1305 3.0 1087
Life: 1835d 144060 3.4 4933 3.1 4412
Wesswood Astro Matt Esther
VG-87 GMD DOM
6-08 2x 365d 31860 3.5 1125 3.1 982
Life: 1847d 140110 3.6 5029 3.2 4424
Wesswood Bell Claudette
VG-87 GMD DOM
9-10 2x 365d 38810 3.6 1383 2.9 1140
Life: 3634d 280980 3.6 9997 3.1 8625



ROCKYMOUNTAIN SROCK LILLI-ET
DAM OF LOT 3



CALBRETT SHOTTLE LISAMAREE EX-91-CAN 5*
3RD DAM OF LOT 3

3

FIVE #1 EMBRYOS

- Worldwide Export Available

Holstein Plaza Contacts:

Steve Mower +1 240-520-5906

Jennifer Dingbaum +1 320-250-2412

S-S-I Mogul Defender-ET

3009554569 *TV *TL *TY *TD

PTA +1379M +70F +55P 73%R 8/13

PTA +4.9PL 2.67SCS +0.6DPR

PTA +3.55T +3.57UDC +3.47FLC 73%R

GTPI +2485G

Rockymountain Srock Lilli-ET

11445781C Born: March 22, 2012

GTPI+2245 +1846M +90F +51P +3.23T

Mountfield SSI Dcy Mogul

3006972816 *TV *TL *TY *TD

PTA +1384M +80F +50P 77%R 8/13

PTA +3.09T +3.15UDC +3.22FLC 77%R

GTPI+2428G

Regan-BH-ALH M Dannah

66625308 Very Good-88

2-00 3x 305d 26060 3.6 931 3.2 845

Ladys-Manor PL Shamrock-ET

68977120 Very Good-85 *TR *TV *TL *TY

PTA +1984M +64F +52P 82%R 8/13

PTA +2.78T +2.22UDC +0.99FLC 77%R

GTPI +2286G

Fleury Gen Baxter Lisa

105353207C Very Good-88 @ 4YR

GTPI+1993 +1441M +77F +37P +2.56T

2-02 2x 365d 32068 4.2 1355 3.2 1017

4-00 2x P217d 32050 3.9 1246 3.2 1012

3rd thru 7th Dams

Calbrett Shottle Lisamaree-ET

EX-91-CAN 5*

6-05 2x 365d 39531 3.7 1455 3.1 1237

Lylehaven Lila Z EX-94 96-MS 16*

4-05 2x 365d 49101 4.0 1960 3.5 1695

- All Canadian Jr. 2-Yr, Jr. 1-Yr

- HM Int. Royal Winter Fair 2004

- 1st Jr.2-Yr Royal Winter Fair 2004

- The ONE-MILLION Dollar Cow!

Lylehaven Form Laura-ET

EX-94 3E GMD DOM 6*

8-08 2x 365d 39319 3.9 1530 3.1 1217

- Res. All Canadian Jr.3-Yr 2002

- HM. All American 4-Yr 2003

Thiersant Lili Starbuck EX-94 5E

9-11 2x 365d 30911 4.5 1384 3.3 1023

Ivyhall Astro Jet Ronie VG-86

5-04 2x 305d 18472 4.2 769 3.1 578



VALLEYVILL RAE LYNN VG-89-2YR-CAN
MATERNAL SISTER TO LOT 4



EASTSIDE LEWISDALE GOLD MISSY EX-95-CAN EEEEE
MATERNAL SISTER TO DAM 4

4

Holstein Plaza Contacts:

Steve Mower +1 240-520-5906

Jennifer Dingbaum +1 320-250-2412

Maple-Downs-I G W Atwood-ET

8956379C Very Good-87 *TV *TL *TY *TD
PTA +293M +47F +14P 99%R 8/13
PTA +79NM\$ -0.5PL 2.93SCS -4.8DPR
PTA +4.65T +3.34UDC +3.77FLC 99%R
GTPI +1770G

Eastside Lewisdale Angelena

7497242C Excellent-90-CAN EX-MS 2E
2-00 2x 305d 18389 4.1 763 3.2 593
2-11 2x 305d 20472 3.7 765 3.0 611
4-03 2x 305d 24151 4.0 968 3.0 723
5-09 2x 305d 29866 3.7 1118 2.9 860

Dam of:

Vallyville Rae Lynn VG-89-2YR-CAN

- Res All-Canadian Sr 2-Year-Old 2012
- Nominated All-Canadian Milking Yrlg 2011
- Res Gr Champ, Ontario Spring Discovery 2013
- 2nd Sr. 2-Yr. Old, Royal Winter Fair 2012
- Res Int Champion, Ontario Spring Show 2012

FOUR #1 IVF FEMALE EMBRYOS

• Export only to the EU and China, no U.S. & Canada Shipment

Braedale Goldwyn

CAN 10705608 GP-CAN EX'05 *TV *TL
PTA +44M +32F +14P 99%R 8/13
PTA +2.94T +2.54UDC +2.40FLC
GTPI +1927G

MD-Delight Durham Atlee-ET

131704103 Excellent-92 EEEEE DOM
3-11 2x 365d 38290 5.5 2091 3.1 1177
• All-American Senior 3-Year-Old 2005

Calbrett-I H H Champion

6961162 *BY *TV *TL
PTA +947M +16F +18P 99%R 8/13
PTA +1.20T +0.32UDC -0.11FLC
GTPI +1476G

Stadacona Outside Abel

8077661C Very Good-88-4YR-CAN 29*
3-03 2x 365d 36599 4.6 1695 3.0 1093
4-06 2x 365d 34035 4.3 1448 2.9 1003
2-02 2x 330d 22240 3.4 752 3.1 686
• Canadian Cow of the Year Finalist 2011
• HM All-Atlantic Winter Yearling 2001
• 1st Winter Calf, Drummond Show 2000

Maternal sister to Angelena/dam:

Eastside Lewisdale Gold Missy

Excellent-95-CAN EEEEE

5-00 2x 315d 36480 4.2 1532 3.2 1164

- Supreme Champ, Royal Winter Fair 2011
- Grand Champ, Royal Winter Fair 2011
- Supreme Champ, World Dairy Expo 2011
- Grand Champ, Int'l Holstein Show 2011
- Sold for 1.2 Million, Morsan Sale 2009
- All-American Junior 3-Yr Old 2009
- Res Intermediate Champ, WDE 2009
- All-American Junior 2-Yr Old 2008
- All-Canadian Junior 2-Yr Old 2008

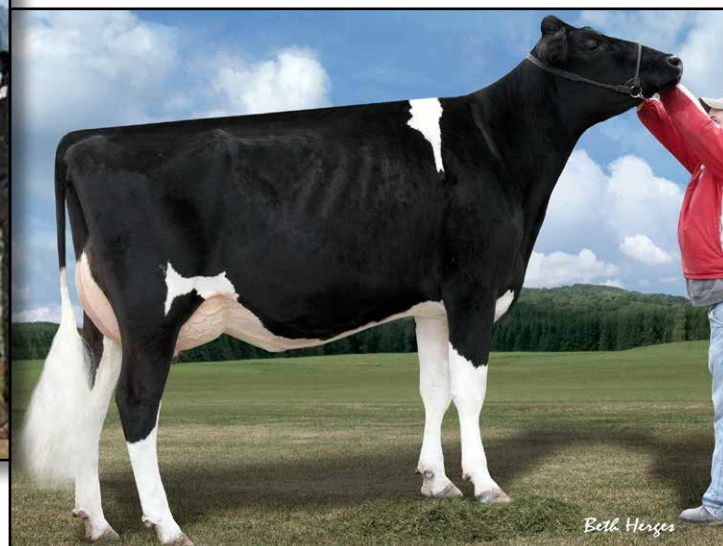
3rd Dam

Stadacona Progress Anibel VG-85-CAN 2*

4-03 2x 365d 38186 3.4 1312 3.2 1208
Life (8 Lacs): 266137 3.4 9034 3.1 8311



MS GOLD CHIP BRIGHT-ET
DAM OF LOT 5



REGANCREST MAC BIKASA-ET VG-87 VG-MS @ 2-07
2ND DAM OF LOT 5

5

FOUR #1 IVF EMBRYOS

• Eligible for U.S. shipment and export to the EU and China

Holstein Plaza Contacts:

Steve Mower +1 240-520-5906

Jennifer Dingbaum +1 320-250-2412

SEXED
semen

Maple-Downs-I G W Atwood-ET (SEXED)

8956379C Very Good-87 *TV *TL *TY *TD
PTA +293M +47F +14P 99%R 8/13
PTA +79NM\$ -0.5PL 2.93SCS -4.8DPR
PTA +4.65T +3.34UDC +3.77FLC 99%R
GTPI +1770G

Ms Gold Chip Bright-ET

71016175 Born: December 2, 2011

- 7th Winter Yearling WDE 2013
- 1st Winter Yearling Illinois State Fair 2013
- 1st Winter Yearling Illinois Championship Show 2013
- 1st Winter Yearling Mid-West Spring 2013
- 5th Winter Yearling NY Spring 2013
- 1st Winter Calf & HM Junior Champion, Illinois Championship Show 2012
- 8th Winter Calf, International Holstein Show 2012

Braedale Goldwyn

CAN 10705608 GP-CAN EX'05 *TV *TL
PTA +44M +32F +14P 99%R 8/13
PTA +2.94T +2.54UDC +2.40FLC
GTPI +1927G

MD-Delight Durham Atlee-ET

131704103 Excellent-92 EEEEE DOM
3-11 2x 365d 38290 5.5 2091 3.1 1177
• All-American Senior 3-Year-Old 2005

Mr Chassity Gold Chip-ET

140145553 Excellent-90 *TR *TV *TL *TD
PTA +776M +38F +16P 77%R 12/12
PTA +3.96T +3.19UDC +3.28FLC 78%R
GTPI +2142G

Regancrest Mac Bikasa-ET

63606799 Very Good-87 VVVVV @ 2-10
2-02 2x 305d 25530 3.9 1004 3.2 825
• Dam of Mr Atwood Brokaw PTAT+4.62

3rd thru 9th Dams

Regancrest-PR Barbie-ET

EX-92 GMD DOM
2-06 2x 365d 31690 3.9 1237 3.1 990
• HM All-American Junior 3-Yr Old 2004
• Former #1 Type Cow

Regancrest Juror Brina-ET EX-92 GMD

4-04 2x 365d 40640 3.6 1478 2.8 1140
• Member Nom AA Best 3 Females 2000
• Res Grand Champ Iowa State Show 2000

Regancrest Aerostar Bert-ET

EX-90 GMD DOM
5-02 2x 365d 37790 3.6 1357 3.0 1143
Life: 1305d 109350 3.7 4031 3.1 3350

Regancrest Mark Chairman Bea

EX-91 2E GMD
7-09 2x 365d 33630 3.8 1276 2.9 988
Life: 2036d 140130 4.1 5711 3.1 4350

Regancrest Board Chairman Bea EX-90

5-09 2x 365d 26010 4.1 1059 3.2 835
Regancrest Apache Standout Bea VG-86
4-10 2x 320d 19070 4.0 766

Life: 2432d 131940 3.6 4744

Regancrest Standout Bertrand VG-85

4-01 2x 355d 17460 3.3 571



MS LICORICE GC LUSHOUS-ET *RC
DAM OF LOT 6



ROCKYMOUNTAIN TALENT LICORICE EX-95
2ND DAM OF LOT 6



FOUR #1 EMBRYOS

- Worldwide Export Available

Holstein Plaza Contacts:

Steve Mower +1 240-520-5906

Jennifer Dingbaum +1 320-250-2412

Mr Apples Armani *RC

68571374 *TV *TL *TY *TD

PTA -502M +68F +21P 77%R 8/13

PTA +511NM\$ +2.6PL 2.84SCS +0.2DPR

PTA +3.41T +3.03UDC +3.25FLC 77%R

GTPI +2138G

Ms Licorice GC Lushous-ET *RC

71494844

Born: September 4, 2012

Braedale Goldwyn

CAN 10705608 GP-CAN EX'05 *TV *TL

PTA +44M +32F +14P 99%R 8/13

PTA +2.94T +2.54UDC +2.40FLC

GTPI +1927G

KHW Regiment Apple-Red-ET EX-95 DOM

4-01 2x 365d 35750 4.7 1682 3.7 1314

Life: 1972d 158680 4.8 7683 3.8 6034

Mr Chassity Gold Chip-ET

140145553 100%RHA-NA *TR *TV *TL

PTA +678M +34F +13P 77%R 8/13

PTA +3.85T +3.06UDC +3.05FLC

GTPI +2053G

Rockymountain Talent Licorice

7990215C Excellent-95 @ 5YR 1*

2-03 2x 305d 23682 3.3 785 3.3 785

3-10 2x 305d 32901 4.0 1310 3.4 1102

- All Canadian 4-Yr, Sr. 3-Yr
- Int. Champ Royal 2010
- Int. Champ QC International 2010
- Res. Grand QC International 2010
- HM. Grand Royal 2010

3rd thru 5th Dams

Idee Rudolph Liberty VG-89-3YR 2*

2-03 2x 305d 19418 3.7 710 3.4 659

4-05 2x 305d 28946 3.4 977 3.2 937

5-11 2x 305d 30181 3.4 1021 3.2 968

Idee Skychief Layota VG-88-7YR 8*

2-08 2x 305d 21065 4.4 924 3.4 716

5-07 2x 305d 28195 4.1 1155 3.2 893

Ravenswell Lydia EX-92-3YR DOM 19*

5-01 2x 305d 21475 4.6 922 3.3 714

- Lydia has 14 VG & 6 EX daughters!



**GARAY ALEXANDER DESTINY EX-92 EX-MS
DAM OF LOT 7**



**GARAY ALEXANDER DESTINY EX-92 EX-MS
DAM OF LOT 7**



FOUR #1 EMBRYOS

• Worldwide Export Available

Holstein Plaza Contacts:

Steve Mower +1 240-520-5906

Jennifer Dingbaum +1 320-250-2412

Pine-Tree Sid-ET

62175895 VG-86-CAN ST'10 *TY
PTA +42M +29F +6P 96%R 8/13
PTA +99NM\$ -1.2PL 2.92SCS -2.1DPR
PTA +2.69T +2.71UDC +1.05FLC 92%R
GTPI +1631G

Garay Alexander Destiny

106351725 Excellent-92 EX-MS (max score)
1-10 2x 362d 24521 3.8 926 2.9 704
• Intermediate Champ, Midwest Fall Nat'l 2013
• 1st Senior 3-Yr-Old, Midwest Fall Nat'l 2013
• All-American Milking Yearling 2011
• HM All-Canadian Milking Yearling 2011
• 1st Milking Yearling World Dairy Expo 2011
• 4th Milking Yearling Royal Winter Fair 2011

Regancrest-Mr Drham Sam-ET

207184639 GM *TR *TV *TL
PTA -69M +22F +3P 99%R 8/13
PTA +1.49T +1.32UDC +1.70FLC
GTPI +1505

Pine-Tree Finley Minnie-ET

61733050 Excellent-90 VVEVE DOM 2*
4-09 2x 305d 26120 3.5 911 3.0 786

Golden-Oaks St Alexander

61133837 *TR *TV *TL *TY *TD
PTA +510M +73F +13P 99%R 8/13
PTA +2.20T +1.51UDC +1.94FLC 99%R
GTPI +1745G

Stanhope Dellia Goldwyn-ET

7807938 Very Good-88-4YR-CAN
3-08 2x 365d 35015 4.6 1624 3.2 1130
2-01 2x 365d 26662 4.2 1128 3.3 877

3rd thru 6th Dams

Wilcoxview Dbl Dellia-ET VG-87-2CAN 4*
3-01 2x 365d 29658 3.1 924 3.5 1052
Life (4 Lacs): 104533 3.3 3402 3.6 3719
Regancrest Durene-ET EX-91 2*
6-01 3x 362d 30911 4.0 1241 3.8 1179
Snow-N Denises Dellia EX-95 GMD DOM
7-06 2x 365d 35610 4.0 1431 3.1 1103
Life: 2558d 180240 3.9 7108 3.4 6065
• Gr Ch & Best Udder Spring Nat/WI 1991
Snow-N Dorys Denise
EX-90 2E GMD DOM
5-09 2x 365d 33350 3.8 1256 2.9 975
Life: 1604d 114010 3.6 4153 3.0 3432



**ROSEDALE TENACIOUS ROSE *RC EX-90 EX-MS
DAM OF LOT 8**



**LAVENDER RUBY REDROSE EX-96 EEEEE 4E
3RD DAM OF LOT 8**

8

FIVE #1 EMBRYOS

- Worldwide Export Available

Holstein Plaza Contacts:

Steve Mower +1 240-520-5906
Jennifer Dingbaum +1 320-250-2412

Air-Osa-Mle Malone-Red-ET

71304165
PTA +533M +32F +31P 72%R 8/13
PTA +0.2PL 2.96SCS +0.0DPR
PTA +3.49T +2.34UDC +2.76FLC
GTPI +1943

Rosedale Tenacious Rose *RC

141451480 Excellent-90 EX-MS @ 3-03
1-11 2x 305d 16130 4.2 671 3.2 519

Maternal sister to Tenacious Rose

Rosedale Tea-Rose-Red EX-94 EEEEE

- 4th 125,000 lb. cow, Grand Int'l R&W 2013
- Reserve All-American 4-Year-Old 2012
- Nasco Type & Production Winner 2012

Willsbro Larson-ET *RC

642862 *TV *TL *TY
PTA +1543M +53F +53P 76%R 8/13
PTA +3.05T +1.57UDC +3.03FLC
GTPI +1911G

Air-Osa-Mle PS Mystic-ET

66916335 EX-90-3YR

Braedale Goldwyn

CAN 10705608 GP-CAN EX'05 *TV *TL
PTA +44M +32F +14P 99%R 8/13
PTA +2.94T +2.54UDC +2.40FLC
GTPI +1927G

Rosedale Tequila Rose

136934693 Good Plus-82
2-03 2x 305d 18510 4.1 767 3.4 634
3-06 2x 305d 21720 3.6 777 3.4 743
• sired by Regancrest Elton Durham

3rd thru 9th Dams

Lavender Ruby Redrose EX-96 EEEEE 4E

7-04 2x 305d 44830 4.9 2207 3.2 1411
Life 2671d 255980 4.3 10969 3.3 8563
• Grand & Supreme Champion WDE 2005
• All American 5-Year-Old 2005
• Grand Champion WDE 2007
• HI R&W World Champion 2006 & 2007
• Res. Sen. Champ. WDE 2004
• Res. All American 2004

Northrose-I Lavender EX-90 EX-MS 4*

3-10 2x 305d 26160 3.6 945 3.4 894

Rosedale Lea-Ann

EX-93 EEEEE 2E GMD
2-06 2x 365d 35201 3.3 1164 3.1 1093
4-08 2x 365d 39370 3.4 1325 3.1 1202

Stookey Elm Park Blackrose *RC

EX-96 EEEEE 3E GMD DOM
5-03 3x 365d 42230 4.6 1939 3.4 1432
7-03 3x 365d 41960 4.3 1796 3.1 1285
• Grand Champion Royal Winter Fair 1995
• All American Jr-2 & Jr-3 Yr Old '92 & '93

Nandette TT Speckle Red EX-93 GMD

4-08 2x 365d 25289 4.7 1195
3 All Canadian & All American
Championship titles

Nandette Riley Nana-Red VG-87

7-01 2x 365d 20070 3.4 677 3.1 621

Nandette Bootmaker Gale VG-89

5-07 2x 305d 22300 4.0 896
Life: 2181d 129410 3.8 4916



TRAMILDA-N BAXTER EMILY VG-85-USA 2YR
2ND DAM OF LOT 9



JOLICAP UNO ELDORA-ET
DAM OF LOT 9



FOUR #1 EMBRYOS

- Worldwide Shipment Available

Holstein Plaza Contacts:

Steve Mower +1 240-520-5906

Jennifer Dingbaum +1 320-250-2412

Cookiecutter Petron Halogen

3008710387 *TV *TL *TY *TD

PTA +1063M +59F +41P 72%R 8/13

PTA +8.1PL 2.41SCS +4.1DPR

PTA +2.86T +3.11UDC +1.34FLC 72%R

GTPI +2546G

Jolicap Uno Eldora-ET

71904498

Born: July 22, 2012

GTPI+2249 +1036M +67F +41P +2.37T

• Sister to Jolicap Emlee GTPI+2543

• Maternal sister to Genervations Epic,
Hood MOM Emmett

Welcome Super Petrone-ET

69207641 *TR *TV *TL *TY *TD

PTA +1105M +47F +30P 75%R 8/13

PTA +2.25T +2.32UDC +1.67FLC 75%R

GTPI +2296G

Cookiecutter MOM Halo-ET

3007069733 Very Good-88 EX-MS @ 2-09

2-00 3x 365d 35410 5.2 1832 3.5 1241

Amighetti Numero Uno-ET

ITA 17990915143 *TV *TL *TY

PTA +971M +88F +46P 77%R 8/13

PTA +2.92T +2.69UDC +1.92FLC 76%R

GTPI +2462G

Tramilda-N Baxter Emily

139232811 Very Good-85

GTPI+2209 +2.32T +1.73UDC +2.26FLC

2-05 2x 282d 30946 4.2 1287 3.2 1001

• Full sister to Tramilda-N Escalade

3rd thru 13th Dams

Wabash-Way Evett-ET VG-86 DOM

2-02 2x 365d 34187 4.9 1660 3.1 1046

Crockett-Acres Elita-ET VG-87 DOM

2-02 2x 365d 39010 3.8 1480 3.5 1383

Crockett -Acres Mtot Elly-ET

EX-90 EX-MS GMD DOM

6-04 2x 283d 38840 3.3 1286 3.4 1302

Wauregan Rudolph Ellymae-ET EX-90

4-06 3x 365d 40210 3.6 1455 3.4 1375

Whittier-Farms Lead Mae-ET

EX-95 3E GMD

8-07 3x 357d 41270 4.8 1962 3.5 1440

Life: 1613d 126960 4.3 5473 3.6 4597

Raymau Bstar Monica-ET VG-89 DOM

2-01 2x 146d 12280 3.8 471 3.3 405

Juniper Jason Maria VG-87 EX-MS DOM

2-03 2x 365d 20260 4.3 868 3.6 736

JDM-Pride Valiant Maggie

EX-91 GMD DOM

6-00 2x 365d 35540 4.1 1441 3.3 1186

Life: 1666d 119120 4.2 5002 3.6 4281

La-Ko-Land Penstate Sadie

VG-87 GMD DOM

8-03 2x 336d 24420 3.3 818 3.2 781

Life: 2480d 166909 3.5 5732 3.2 2854

La-Ko-Land Bootmaker Sally VG-86

5-10 2x 365d 24450 4.1 1010

La-Ko-Land Monitor Nancy EX-90

10-11 3x 320d 19670 3.1 619

Life: 2381d 145490 3.0 4442



**TRAMILDA-N BAXTER EMILY VG-85-USA 2YR
2ND DAM OF LOT 10**



**WABASH-WAY EVETT-ET VG-86 DOM
3RD DAM OF LOT 10**

10

FOUR #1 EMBRYOS

- *Worldwide Shipment Available*

Holstein Plaza Contacts:

Steve Mower +1 240-520-5906

Jennifer Dingbaum +1 320-250-2412

De-Su Nominee-ET

70626023 *TY

PTA +1771M +76F +67P 72%R 8/13

PTA +5.6PL 2.58SCS +2.3DPR

PTA +2.37T +2.08UDC +1.99FLC 72%R

GTPI +2487G / gRZG+156

Ms Emily Eglantine-ET

71994202

Born: August 14, 2012

GTPI+2243 +891M +78F +38P +1.80T

• *Sister to Jolicap Emlee GTPI+2543*

• *Maternal sister to Genervations Epic, Hood MOM Emmett*

Amighetti Numero Uno-ET

ITA 17990915143 *TV *TL *TY

PTA +971M +88F +46P 77%R 8/13

PTA +2.92T +2.69UDC +1.92FLC 76%R

GTPI +2462G

Coyne-Farms Mass Jill-ET

68677629

2-03 3x 183d 14679 2.7 399 3.0 436

inc.2-00 3x 365d 35410 5.2 1832 3.5

1241

Air-Osa Excel altaAirnet

68769438 *TV *TL *TY *TD

PTA +1254M +50F +47P 76%R 8/13

PTA +2.15T +1.82UDC +0.82FLC 76%R

GTPI+2141G

Tramilda-N Baxter Emily

139232811 Very Good-85

GTPI+2209 +2.32T +1.73UDC +2.26FLC

2-05 2x 282d 30946 4.2 1287 3.2 1001

• *Full sister to Tramilda-N Escalade*

3rd thru 13th Dams

Wabash-Way Evett-ET VG-86 DOM

2-02 2x 365d 34187 4.9 1660 3.1 1046

Crockett-Acres Elita-ET VG-87 DOM

2-02 2x 365d 39010 3.8 1480 3.5 1383

Crockett -Acres Mtot Elly-ET

EX-90 EX-MS GMD DOM

6-04 2x 283d 38840 3.3 1286 3.4 1302

Wauregan Rudolph Ellymae-ET EX-90

4-06 3x 365d 40210 3.6 1455 3.4 1375

Whittier-Farms Lead Mae-ET

EX-95 3E GMD

8-07 3x 357d 41270 4.8 1962 3.5 1440

Life: 1613d 126960 4.3 5473 3.6 4597

Raymau Bstar Monica-ET VG-89 DOM

2-01 2x 146d 12280 3.8 471 3.3 405

Juniper Jason Maria VG-87 EX-MS DOM

2-03 2x 365d 20260 4.3 868 3.6 736

JDM-Pride Valiant Maggie

EX-91 GMD DOM

6-00 2x 365d 35540 4.1 1441 3.3 1186

Life: 1666d 119120 4.2 5002 3.6 4281

La-Ko-Land Penstate Sadie

VG-87 GMD DOM

8-03 2x 336d 24420 3.3 818 3.2 781

Life: 2480d 166909 3.5 5732 3.2 2854

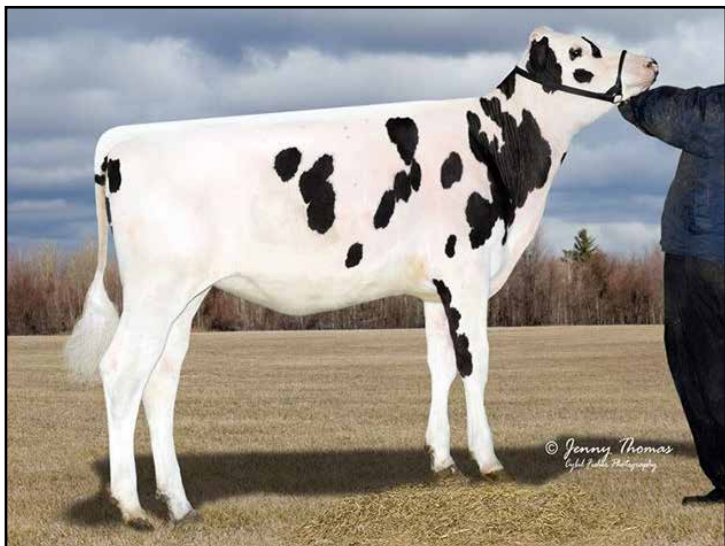
La-Ko-Land Bootmaker Sally VG-86

5-10 2x 365d 24450 4.1 1010

La-Ko-Land Monitor Nancy EX-90

10-11 3x 320d 19670 3.1 619

Life: 2381d 145490 3.0 4442



BAF-ZBW TURNING LAYNE
DAM OF LOT 11



BURR-AYR BOLTON TRESSA EX-90 DOM
2ND DAM OF LOT 11

11

FIVE #1 EMBRYOS

• Worldwide Export Available

Holstein Plaza Contacts:

Steve Mower +1 240-520-5906

Jennifer Dingbaum +1 320-250-2412

Cookiecutter Petron Halogen

3008710387 *TV *TL *TY *TD

PTA +1063M +59F +41P 72%R 8/13

PTA +8.1PL 2.41SCS +4.1DPR

PTA +2.86T +3.11UDC +1.34FLC 72%R

GTPI +2546G

BAF-ZBW Turning Layne

3010631900 Born: June 22, 2012

GTPI+2291 +1391M +46F +41P +2.04T

Welcome Super Petrone-ET

69207641 *TR *TV *TL *TY *TD

PTA +1105M +47F +30P 75%R 8/13

PTA +2.25T +2.32UDC +1.67FLC 75%R

GTPI +2296G

Cookiecutter MOM Halo-ET

3007069733 Very Good-88 EX-MS @ 2-09

2-00 3x 365d 35410 5.2 1832 3.5 1241

2-03 2x 159d 14324 4.3 611 3.2 454

Kellercrest Super Layne-ET

69725085 VG-85 *TR *TV *TL *TY *TD

PTA +1202M +24F +35P 77%R 8/13

PTA +2.46T +2.51UDC +2.08FLC 77%R

GTPI +2285G

Burr-Ayr Bolton Tressa

64419316 Excellent-90 DOM *TY

GTPI+2043 +1651M +61F +48P +1.25T

4-05 3x 352d 42100 3.9 1631 3.2 1350

2-03 2x 365d 33030 4.0 1332 3.3 1100

3rd thru 8th Dams

Burr-Ayr O-Man Gabriela EX-90 DOM

3-05 2x 365d 40870 3.4 1380 3.5 1428

Burr-Ayr Patriot Marble VG-86 GMD

4-04 3x 305d 32400 3.2 1039 2.8 914

Life: 1065d 102850 3.4 3456 2.8 2931

Burr-Ayr Farms Oscar Mufasa VG-85 DOM

4-03 3x 305d 38700 3.3 1294 3.1 1190

Life: 1277d 131150 3.3 4386 3.0 3996

Burr-Ayr Farms SBM Mayo-ET

VG-85 GMD

4-05 3x 305d 34300 3.0 1020 2.8 962

Burr-Ayr Farms Mars Nugget

EX-91 2E GMD DOM

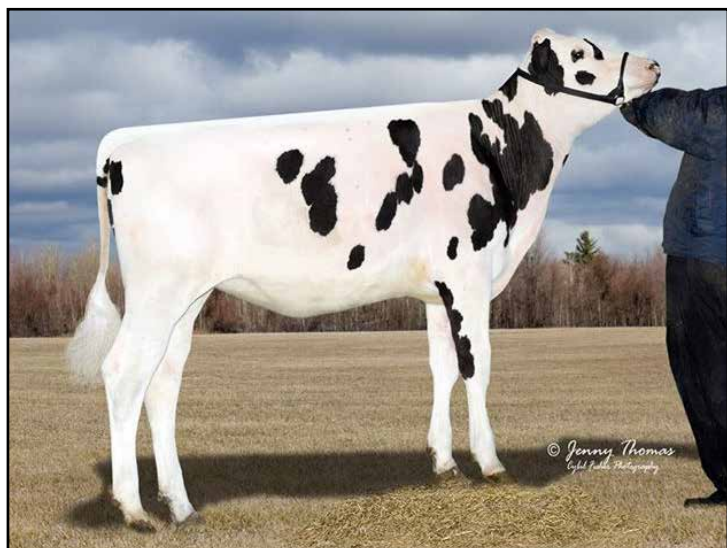
4-01 2x 305d 35410 3.2 1145 3.0 1073

Life: 1220d 110720 3.1 3481 3.1 3413

Burr-Ayr Farms Bell Nugget

EX-90 GMD DOM

3-00 2x 365d 28320 3.3 947 3.3 939



BAF-ZBW TURNING LAYNE
DAM OF LOT 12



BURR-AYR BOLTON TRESSA EX-90 DOM
2ND DAM OF LOT 12

12

THREE #2 EMBRYOS

• Worldwide Export Available

Holstein Plaza Contacts:

Steve Mower +1 240-520-5906

Jennifer Dingbaum +1 320-250-2412

Cookiecutter Petron Halogen

3008710387 *TV *TL *TY *TD

PTA +1063M +59F +41P 72%R 8/13

PTA +8.1PL 2.41SCS +4.1DPR

PTA +2.86T +3.11UDC +1.34FLC 72%R

GTPI +2546G

BAF-ZBW Turning Layne

3010631900 Born: June 22, 2012

GTPI+2291 +1391M +46F +41P +2.04T

Welcome Super Petrone-ET

69207641 *TR *TV *TL *TY *TD

PTA +1105M +47F +30P 75%R 8/13

PTA +2.25T +2.32UDC +1.67FLC 75%R

GTPI +2296G

Cookiecutter MOM Halo-ET

3007069733 Very Good-88 EX-MS @ 2-09

2-00 3x 365d 35410 5.2 1832 3.5 1241

2-03 2x 159d 14324 4.3 611 3.2 454

Kellercrest Super Layne-ET

69725085 VG-85 *TR *TV *TL *TY *TD

PTA +1202M +24F +35P 77%R 8/13

PTA +2.46T +2.51UDC +2.08FLC 77%R

GTPI +2285G

Burr-Ayr Bolton Tressa

64419316 Excellent-90 DOM *TY

GTPI+2043 +1651M +61F +48P +1.25T

4-05 3x 352d 42100 3.9 1631 3.2 1350

2-03 2x 365d 33030 4.0 1332 3.3 1100

3rd thru 8th Dams

Burr-Ayr O-Man Gabriela EX-90 DOM

3-05 2x 365d 40870 3.4 1380 3.5 1428

Burr-Ayr Patriot Marble VG-86 GMD

4-04 3x 305d 32400 3.2 1039 2.8 914

Life: 1065d 102850 3.4 3456 2.8 2931

Burr-Ayr Farms Oscar Mufasa VG-85 DOM

4-03 3x 305d 38700 3.3 1294 3.1 1190

Life: 1277d 131150 3.3 4386 3.0 3996

Burr-Ayr Farms SBM Mayo-ET

VG-85 GMD

4-05 3x 305d 34300 3.0 1020 2.8 962

Burr-Ayr Farms Mars Nugget

EX-91 2E GMD DOM

4-01 2x 305d 35410 3.2 1145 3.0 1073

Life: 1220d 110720 3.1 3481 3.1 3413

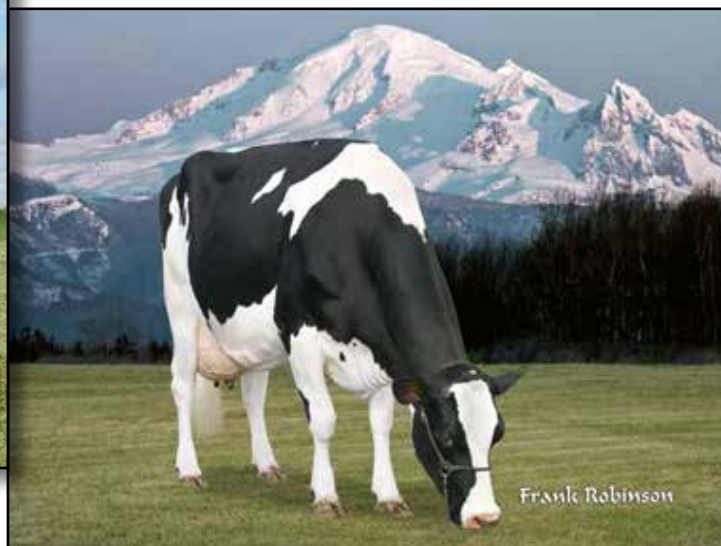
Burr-Ayr Farms Bell Nugget

EX-90 GMD DOM

3-00 2x 365d 28320 3.3 947 3.3 939



RONELEE BOLIVER DREARY VG-86 DOM
2ND DAM OF LOT 13



RONELEE OUTSIDE DABBLE-ET EX-91 2E GMD DOM
3RD DAM OF LOT 13

13

FOUR #1 EMBRYOS

- Worldwide Export Available

Holstein Plaza Contacts:

Steve Mower +1 240-520-5906

Jennifer Dingbaum +1 320-250-2412

K-Manor Epic Save-ET *RC

70957183 *TV *TL *TY *TD

PTA +1300M +51F +42P 72%R 8/13

PTA +6.7PL 2.69SCS +2.3DPR

PTA +2.51T +2.45UDC +2.40FLC 72%R

GTPI +2339G

Ms Dreary Destiny-ET *RC

72026077 Born: August 28, 2012

GTPI+2082 +1316M +38F +40P +3.49T

Generations Epic-ET

11104016C *TV *TL *TY *TD

PTA +1785M +53F +54P 76%R 8/13

PTA +2.59T +1.97UDC +2.53FLC 75%R

GTPI +2332G

K-Manor Gabor Secrecy-ET *RC

68654147 Good Plus-83

Hunsberger Alchemy-ET *RC

69080973 *TV *TL *TY *TD

PTA +968M +32F +43P 76%R 8/13

PTA +2.90T +2.82UDC +1.45FLC 99%R

GTPI +2184G

Ronelee Boliver Dreary

139531796 Very Good-86 @ 3YR DOM

GTPI+2098 +1149M +57F +43P +2.18T

2-04 2x 305d 23999 3.8 915 3.4 822

- Maternal sister to Domain
- Dam to Deligence & Deligent @ TAG
- Dam to several high testing daughters

3rd thru 8th Dams

Ronelee Outside Dabble

EX-91 2E GMD DOM

5-03 3x 365d 44530 3.6 1612 3.0 1313

Life: 1418d 146440 3.6 5215 3.2 4653

Ronelee Rudolph Dimple

EX-93 EEEEE 2E DOM

5-08 3x 365d 45290 3.7 1713 3.1 1428

Life: 1582d 164010 3.6 5900 3.2 5284

Select Mark Dolly

EX-95 EEEEE 4E GMD DOM

6-07 3x 365d 45870 4.0 1846 3.1 1431

Life: 3295d 276300 3.6 9992 3.2 8964

Select Southwind Dinah EX-91 EEEEE 2E

5-11 3x 365d 30080 3.7 1124 3.3 981

Life: 1505d 103810 3.9 4010 3.3 3456

Select Mars Tony Diana VG-86 VG-MS

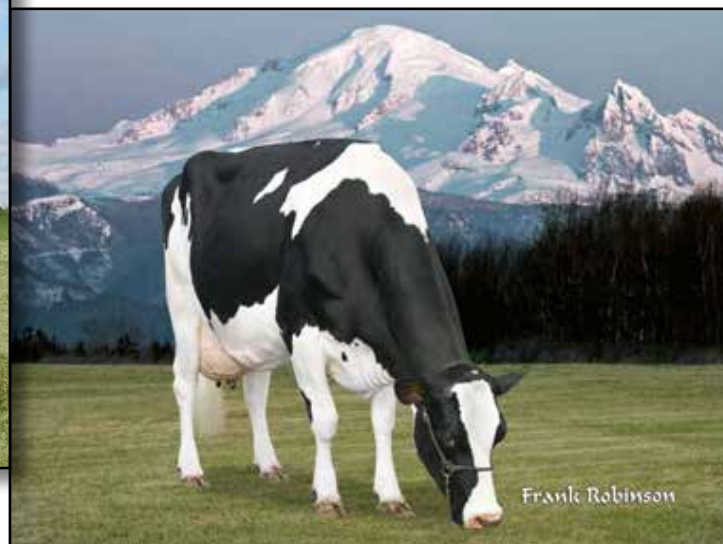
3-04 2x 365d 26200 4.2 1112 3.5 916

Dinah Select Wayne Dixie VG-85

3-07 2x 305d 23460 4.0 935 3.4 789



RONELEE BOLIVER DREARY VG-86 DOM
2ND DAM OF LOT 14



RONELEE OUTSIDE DABBLE-ET EX-91 2E GMD DOM
3RD DAM OF LOT 14

14

TWO #2 EMBRYOS

- Worldwide Export Available

Holstein Plaza Contacts:

Steve Mower +1 240-520-5906

Jennifer Dingbaum +1 320-250-2412

K-Manor Epic Save-ET *RC

70957183 *TV *TL *TY *TD

PTA +1300M +51F +42P 72%R 8/13

PTA +6.7PL 2.69SCS +2.3DPR

PTA +2.51T +2.45UDC +2.40FLC 72%R

GTPI +2339G

Ms Dreary Destiny-ET *RC

72026077 Born: August 28, 2012

GTPI+2082 +1316M +38F +40P +3.49T

Generations Epic-ET

11104016C *TV *TL *TY *TD

PTA +1785M +53F +54P 76%R 8/13

PTA +2.59T +1.97UDC +2.53FLC 75%R

GTPI +2332G

K-Manor Gabor Secrecy-ET *RC

68654147 Good Plus-83

Hunsberger Alchemy-ET *RC

69080973 *TV *TL *TY *TD

PTA +968M +32F +43P 76%R 8/13

PTA +2.90T +2.82UDC +1.45FLC 99%R

GTPI +2184G

Ronelee Boliver Dreary

139531796 Very Good-86 @ 3YR DOM

GTPI+2098 +1149M +57F +43P +2.18T

2-04 2x 305d 23999 3.8 915 3.4 822

- Maternal sister to Domain
- Dam to Deligence & Deligent @ TAG
- Dam to several high testing daughters

3rd thru 8th Dams

Ronelee Outside Dabble

EX-91 2E GMD DOM

5-03 3x 365d 44530 3.6 1612 3.0 1313

Life: 1418d 146440 3.6 5215 3.2 4653

Ronelee Rudolph Dimple

EX-93 EEEEE 2E DOM

5-08 3x 365d 45290 3.7 1713 3.1 1428

Life: 1582d 164010 3.6 5900 3.2 5284

Select Mark Dolly

EX-95 EEEEE 4E GMD DOM

6-07 3x 365d 45870 4.0 1846 3.1 1431

Life: 3295d 276300 3.6 9992 3.2 8964

Select Southwind Dinah EX-91 EEEEE 2E

5-11 3x 365d 30080 3.7 1124 3.3 981

Life: 1505d 103810 3.9 4010 3.3 3456

Select Mars Tony Diana VG-86 VG-MS

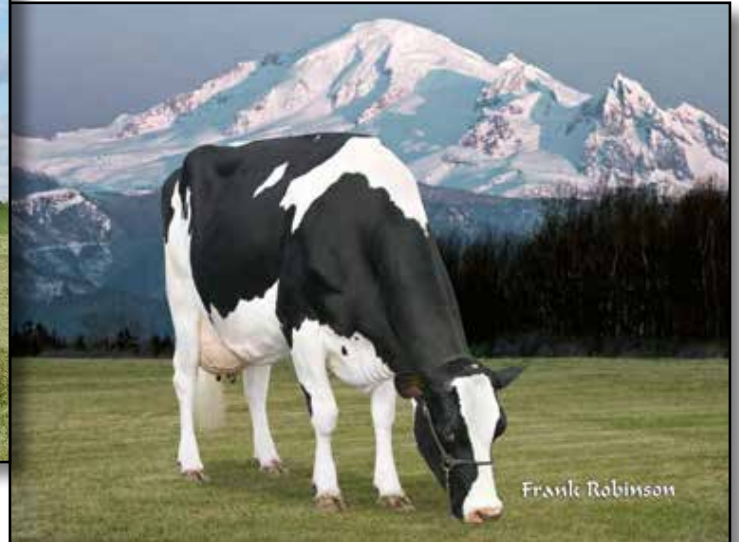
3-04 2x 365d 26200 4.2 1112 3.5 916

Dinah Select Wayne Dixie VG-85

3-07 2x 305d 23460 4.0 935 3.4 789



RONELEE BOLIVER DREARY VG-86 DOM
2ND DAM OF LOT 15



RONELEE OUTSIDE DABBLE-ET EX-91 2E GMD DOM
3RD DAM OF LOT 15

15

FOUR #1 EMBRYOS

• Worldwide Export Available

Holstein Plaza Contacts:

Steve Mower +1 240-520-5906

Jennifer Dingbaum +1 320-250-2412

Stantons Catalyst

107535541

PTA +1877M +85F +57P 74%R 8/13

PTA +7.4PL 2.77SCS +1.1DPR

PTA +2.46T +2.47UDC +1.92FLC 71%R

GTPI +2455G

T-Gen-AC Drearys Emotion-ET

71818799

Born: June 21, 2012

GTPI+2195 +1784M +51F +52P +2.04T

Ladys-Manor PL Shamrock-ET

68977120 Very Good-85 *TR *TV *TL *TY

PTA +1984M +64F +52P 82%R 8/13

PTA +2.78T +2.22UDC +0.99FLC 77%R

GTPI +2286G

Stantons Freddie Cameo

11083913 Very Good-85-2YR

2-02 3x 365d 30481 4.9 1499 3.5 1065

Genervations Epic-ET

11104016C *TV *TL *TY *TD

PTA +1785M +53F +54P 76%R 8/13

PTA +2.59T +1.97UDC +2.53FLC 75%R

GTPI +2332G

Ronelee Boliver Dreary

139531796 Very Good-86 @ 3YR DOM

GTPI+2098 +1149M +57F +43P +2.18T

2-04 2x 305d 23999 3.8 915 3.4 822

• Maternal sister to Domain

• Dam to Deligence & Deligent @ TAG

• Dam to several high testing daughters

3rd thru 8th Dams

Ronelee Outside Dabble

EX-91 2E GMD DOM

5-03 3x 365d 44530 3.6 1612 3.0 1313

Life: 1418d 146440 3.6 5215 3.2 4653

Ronelee Rudolph Dimple

EX-93 EEEEE 2E DOM

5-08 3x 365d 45290 3.7 1713 3.1 1428

Life: 1582d 164010 3.6 5900 3.2 5284

Select Mark Dolly

EX-95 EEEEE 4E GMD DOM

6-07 3x 365d 45870 4.0 1846 3.1 1431

Life: 3295d 276300 3.6 9992 3.2 8964

Select Southwind Dinah EX-91 EEEEE 2E

5-11 3x 365d 30080 3.7 1124 3.3 981

Life: 1505d 103810 3.9 4010 3.3 3456

Select Mars Tony Diana VG-86 VG-MS

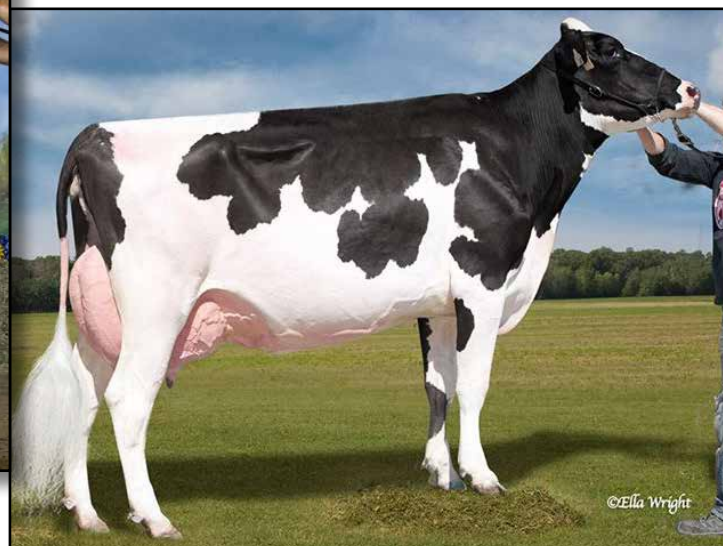
3-04 2x 365d 26200 4.2 1112 3.5 916

Dinah Select Wayne Dixie VG-85

3-07 2x 305d 23460 4.0 935 3.4 789



RAINYRIDGE GOODLUCK MAY EX-95 3E
DAM OF LOT 16



RAINYRIDGE ESQUIRE MIAMI VG-87-2YR
MATERNAL SISTER TO LOT 16

16

FOUR #1 EMBRYOS

• Worldwide Export Available

Holstein Plaza Contacts:

Steve Mower +1 240-520-5906

Jennifer Dingbaum +1 320-250-2412

Crackholm Fever

103631566C *TY *TD

PTA +311M +43F +10P 94%R 8/13

PTA +3.4PL 2.79SCS +0.1DPR

PTA +2.42T +1.91UDC +1.52FLC 89%R

GTPI +1891G

Rainyridge Goodluck May

141889168 EX-95-8YR-USA EX-MS 3E

2-11 2x 285d 20088 4.4 884 3.6 732

3-10 2x 313d 25551 4.5 1162 3.7 937

5-03 2x 365d 30637 4.1 1243 3.5 1071

• Nom. All-West Mature Cow 2010

• 1st Aged Cow, Midwest Fall National 2011

• 1st Aged Cow, Midwest Fall National 2010

• 1st Mature Cow Morris 2011, 2010

• 1st Mature Cow Brandon Ag Ex. 2010

Braedale Goldwyn

CAN 10705608 GP-CAN EX'05 *TV *TL

PTA +44M +32F +14P 99%R 8/13

PTA +2.94T +2.54UDC +2.40FLC

GTPI +1927G

Crackholm Emory Fashion

100385034 Excellent-92-CAN 10*

4-09 2x 365d 36358 3.8 1387 2.9 1071

Braedale Goodluck

6790237C *TV *TL

PTA -206M +25F +10P 98%R 8/13

PTA +1.28T +1.92UDC -.17FLC 97%R

GTPI +1484G

Dayeta Milan Elly May

6726326C EX-CAN 2E 2*

2-09 2x 305d 17066 4.0 686 3.5 591

4-09 2x 305d 28230 4.7 1316 3.3 919

5-10 2x 365d 29806 3.7 1102 3.4 1021

• 2nd 5-Year-Old Brandon Ag Ex. 2002

3rd thru 4th Dams

Dayeta Broker Emmy Lou VG-88 2*

2-06 2x 275d 16788 4.8 805 3.8 644

8-08 3x 204d 20276 4.3 864 3.2 653

• 2nd 5-YR Brandon Ag. Ex. 1999

Dayeta Midnight Elly VG-85-3YR

4-04 2x 305d 22604 3.8 866 3.1 699

7-08 2x 365d 22209 3.8 838 3.4 745

• 3rd 4-YR Central MB 1993



CO-VISTA ATWOOD DESIRE-ET VG-87 VG-MS @ 2-08
DAM OF LOT 17



SCIENTIFIC DELUXE RAE-ETS EX-91 EX-MS
2ND DAM OF LOT 17

17

Holstein Plaza Contacts:

Steve Mower +1 240-520-5906

Jennifer Dingbaum +1 320-250-2412



De-Su Bkm McCutchen 1174-ET (SEXED)

69990138 *TV *TL *TY *TD

PTA +1332M +67F +49P 77%R 8/13

PTA +635NM\$ +3.9PL 2.77SCS +0.1DPR

PTA +3.72T +3.48UDC +2.75FLC 76%R

GTPI +2362G

Co-Vista Atwood Desire-ET

69058395 Very Good-87 VVVVV @ 2-08

GTPI+1991 +663M +46F +26P +4.17T

2-03 2x 305d 22650 3.9 887 3.4 778

• One of the highest PTAT cows in the breed

• Dam of a +2467 GTPI Uno daughter!

• Potential 9th Generation Excellent!

• Sold as a package in the 2011 Planet

Holstein Sale for \$200,000

FOUR #1 EMBRYOS

• Worldwide Shipment Available

De-Su 521 Bookem-ET

66636657 *TR *TV *TL *TY *TD

PTA +1584M +45F +57P 93%R 8/13

PTA +2.45T +2.29UDC +1.13FLC 89%R

GTPI +2222G

Sully Shottle May-TW

138218285 Very Good-85 DOM

2-02 3x 365d 34110 3.2 1095 3.1 1066

Maple-Downs-I G W Atwood-ET

8956379C Very Good-87 *TV *TL *TY *TD

PTA +293M +47F +14P 99%R 8/13

PTA +4.65T +3.34UDC +3.77FLC 99%R

GTPI +1770G

Scientific Deluxe Rae-ETS *TV

138904205 Excellent-91 EX-MS @ 4-06

3-11 2x 365d 35424 3.9 1351 3.3 1183

2-00 2x 365d 28794 4.0 1152 3.5 1005

3rd thru 10th Dams

Scientific Debutante Rae-ET

EX-92 EEEEE *RC *CV

2-02 2x 365d 32930 4.4 1440 3.4 1132

• All-American 4-Yr-Old Cow 2005

• Res Grand Champ, Int'l Show 2005

• HM All-American Jr 3-Yr-Old Cow 2004

• Res Grand Champ, Mid-W Sprg/Nat 2004

• Int Champion, Mid-West Sprg/Nat 2004

Scientific Jubilant Rae-ET EX-90 DOM

5-11 2x 365d 38880 4.1 1608 3.6 1403

Life: 1394d 117590 4.0 4707 3.6 4242

C Hanoverhill Tony Rae

EX-96 3E GMD DOM

6-11 2x 365d 40220 4.1 1661 3.3 1331

Life: 2247d 166396 4.1 6904 3.4 5612

• Grand Champion Western National 1993

Hanoverhill TT Roxette-ET EX-94 2E GMD

10-0 3x 365d 35040 4.3 1519 3.0 1063

Life: 2104d 164789 4.1 6760 3.1 3587

Mil-R-Mor Roxette EX-CAN 30*

7-01 2x 365d 24531 4.7 1153

Life (6 Lacs): 121418 4.7 5728

C Glenridge Citation Roxy EX-97 4E GMD

10-1 2x 365d 25280 4.2 1060

Life: 3620d 209784 4.5 9471

• Queen of the Breed I and II

C Norton Court Model Vee EX-90

6-06 2x 365d 22483 3.9 875

Life: 4183d 218629 3.9 8581

• All-American Produce of Dam 1977, '78, '79

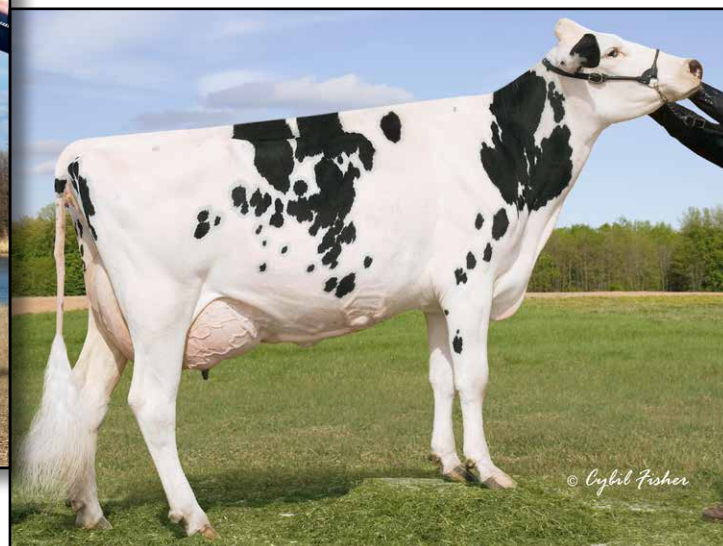
Norton Court Reflection Vale VG-85-CAN 5*

8-11 2x 332d 20631 3.7 765

Life (14 Lacs): 249583 3.7 9295



INDIANHEAD STORMTIC ROSA-ET EX-90 91-MS @ 5-00
DAM OF LOT 18



ASTRAHOE R GIBSON RENEE-ET EX-93 2E
2ND DAM OF LOT 18

18

FOUR #1 EMBRYOS

• Worldwide Export Available

Holstein Plaza Contacts:

Steve Mower +1 240-520-5906

Jennifer Dingbaum +1 320-250-2412



Regancrest S Braxton-ET (SEXED)

61898423 Excellent-95 *TR *TV *TL *TY
PTA +1396M +15F +17P 99%R 8/13
PTA -4.0PL 2.95SCS -4.0DPR 8%DCE
PTA +3.64T +1.87UDC +2.24FLC 97%R
GTPI +1512G

Indianhead Stormtic Rosa-ET

139216464 Excellent-90 91-MS @ 5-00
3-02 2x 313d 24440 3.7 901 3.2 778
2-02 2x 286d 16790 3.4 574 3.1 514
• 14th Generation Excellent

Picston Shottle-ET

GBR 598172 EX-95 GM 12/11 *TV *TL *TY
PTA +995M +27F +49P 99%R 8/13
PTA +2.45T +1.93UDC +1.65FLC
GTPI +1971G

Regancrest-PR Barbie

60602011 Excellent-92 GMD DOM
2-06 2x 365d 31690 3.9 1237 3.3 1050

Comestar Stormatic-ET

6947936C EX-CAN GM 2/07 *TV *TL
PTA +386M -4F +4P 99%R 12/12
PTA +1.72T +.79UDC +2.54FLC
GTPI +1481G

Astrahoe R Gibson Renee-ET

133777428 Excellent-93 EEEEE 2E
5-03 3x 365d 34480 3.4 1179 2.9 990
3-07 3x 365d 33760 4.0 1366 3.1 1058
2-02 3x 365d 28440 3.8 1093 3.0 850
Life: 2017d 167640 3.9 6597 3.3 5481

3rd thru 14th Dams

Pinehurst Royal Rosa-ET EX-91 2E

3-10 3x 365d 41395 3.3 1358 2.8 1145
Life: 1212d 115400 3.5 4073 3.1 3593

Pinehurst Roulade EX-92 EEEEE 2E

5-00 3x 365d 35130 3.6 1271 3.2 1115
Life: 1761d 142070 3.8 5395 3.3 4705

Pinehurst Sweet Cleo EX-90 EEEV

6-00 3x 365d 40380 4.4 1776 3.2 1305

Pinehurst Sweet Freedom EX-90 VEVE

5-07 3x 330d 34520 4.3 1500 3.1 1084

Pinehurst Sweet Delite EX-91 3E GMD

8-10 3x 365d 28460 4.2 1194 3.2 917

Life: 2228d 151600 4.0 6116 3.2 4907

Pinehurst Rapture EX-96 4E GMD

8-02 3x 365d 30370 4.2 1290 3.1 948

Life: 2297d 160790 3.9 6337 3.0 2469

Pinehurst Fragrance EX-90 2E

4-8 3x 365d 34490 3.6 1234

Hayssen Fond Ariel EX-90 2E

8-06 2x 328d 23330 3.2 753

Hayssen D V Audrey EX-90 2E

9-03 2x 365d 23670 4.4 1035

Whirlhill Q Rag Apple Ariel EX-92

6-02 2x 365d 26755 4.2 1134

Arlite Posch EX-92 GMD

5-03 2x 365d 21193 3.7 779

Audrey Posch EX-93 GMD

14-2 2x 365d 25572 3.7 948



MISS HOT STREAK-RED-ET
DAM OF LOT 19



STARMARK AD HOTSTUFF-RED-ET EX-94 EEEEE
2ND DAM OF LOT 19

19

Holstein Plaza Contacts:

Steve Mower +1 240-520-5906

Jennifer Dingbaum +1 320-250-2412



Mr Apples Armani *RC (SEXED)

68571374 *TV *TL *TY *TD
PTA -502M +68F +21P 77%R 8/13
PTA +511NM\$ +2.6PL 2.84SCS +0.2DPR
PTA +3.41T +3.03UDC +3.25FLC 77%R
GTPI +2138G

Miss Hot Streak-Red-ET *PO

71435062 Born: March 5, 2012
GTPI+1776 +332M +10F +8P +2.74T

TWO #2 EMBRYOS

• Worldwide Export Available

Braedale Goldwyn

CAN 10705608 GP-CAN EX'05 *TV *TL
PTA +44M +32F +14P 99%R 8/13
PTA +2.94T +2.54UDC +2.40FLC
GTPI +1927G

KHW Regiment Apple-Red-ET

Excellent-95 DOM
4-01 2x 365d 35750 4.7 1682 3.7 1314
Life: 1972d 158680 4.8 7683 3.8 6034

Sandy-Valley Colt P-Red-TW

68731810 *PO *TV *TL *TY *TD
PTA +758M +9F +27P 74%R 8/13
PTA +1.88T +2.12UDC +1.44FLC 76%R
GTPI +1971G

Starmark Ad Hotstuff-Red-ET

138253121 Excellent-94 EEEEE 5-07
GTPI+1759 +2.89T +2.15UDC +2.49FLC
5-00 2x 305d 28360 5.6 1575 2.9 813
• Reserve Grand Champion WDE 2012
• Senior & Grand Champion New York
R&W Spring Show 2013

3rd thru 11th Dams

Scientific SS Hottie-RED EX-93-7YR 2E
2-04 2x 305d 28220 4.4 1245 3.4 963
Scientific Raes Hope-RED EX-92-5YR
4-03 3x 365d 36984 3.5 1303 3.2 1171
Scientific Jubilant Rae-ET *RC EX-90 DOM
5-11 3x 365d 38,880 4.1 1608 3.4 1 329
C Hanoverhill Tony Rae
EX-96 3E GMD DOM
6-11 2x 365d 40220 4.1 1661 3.3 1331
Life: 2247d 166396 4.1 6904 3.4 5612
• Grand Champion Western National 1993
Hanoverhill TT Roxette-ET EX-94 2E GMD
10-0 3x 365d 35040 4.3 1519 3.0 1063
Life: 2104d 164789 4.1 6760 3.1 3587
Mil-R-Mor Roxette EX-CAN 30*
7-01 2x 365d 24531 4.7 1153
Life (6 Lacs): 121418 4.7 5728
C Glenridge Citation Roxy EX-97 4E GMD
10-1 2x 365d 25280 4.2 1060
Life: 3620d 209784 4.5 9471
• Queen of the Breed I and II
C Norton Court Model Vee EX-90
6-06 2x 365d 22483 3.9 875
Life: 4183d 218629 3.9 8581
• All-American Produce of Dam 1977, '78, '79
Norton Court Reflection Vale VG-85-CAN 5*
8-11 2x 332d 20631 3.7 765
Life (14 Lacs): 249583 3.7 9295



**ELM-MOUND ADVNT REIN-RED-ET EX-90 EX-MS
DAM OF LOT 20**



**STELBRO RENITA RANGER-RED EX-94 3E
3RD DAM OF LOT 20**

20

THREE #1 EMBRYOS

- Worldwide Export Available

Holstein Plaza Contacts:

Steve Mower +1 240-520-5906

Jennifer Dingbaum +1 320-250-2412

Apples Absolute-Red-ET

139358472 Excellent-92 *CV *TL *TY *TD
PTA -1400M +22F -2P 97%R 8/13
PTA -0.6PL 3.38SCS -3.4DPR
PTA +3.92T +3.56UDC +2.86FLC 95%R
GTPI +1585G

Elm-Mound Advnt Rein-Red-ET

137874378 Excellent-90 EX-MS
5-03 2x 365d 33759 4.0 1366 3.6 1232
3-11 2x 365d 33761 3.7 1273 3.7 1246
2-02 2x 365d 24980 3.9 979 3.4 857

Ladino Park Talent-Imp-ET *RC

AUS 930377 *TV *TL
PTA -252M -32F +3P 99%R 8/13
PTA +2.15T +2.33UDC +1.13FLC
GTPI +1436G

KHW Regiment Apple-Red-ET

135511521 Excellent-95 2E DOM
4-01 2x 365d 35750 4.7 1682 3.7 1314
• Grand Champion, Grand Int'l R&W Show 2011

KHW Kite Advent-Red-ET

133002953 Excellent-94 *TV *TL *TD
PTA -1012M -11F -21P 99%R 8/13
PTA +2.60T +2.27UDC +1.65FLC
GTPI +1574G

Stelbro Renita Ravel-ET

10566326C Very Good-88 VVVVE *RC
4-04 2x 365d 27900 3.3 931 3.1 864
3-04 2x 284d 26709 3.3 886 3.1 829
2-01 2x 365d 26228 3.7 977 3.2 836

Maternal sister to Ravel

Carrousel RM Rolanda-ET *RC EX-94

6-02 2x 365d 61510 3.7 2294 2.6 1587

3rd thru 7th Dams

Stelbro Renita Ranger-Red EX-94 3E
7-04 2x 365d 29760 3.9 1168 3.1 924
• All-American R&W Aged Cow 2001
• Grand Champ Grand National 2001, 1998
• Unanimous AA R&W 4-Yr-Old 1998
• All-American R&W Sr 2-Yr-Old Cow 1996
• All-American R&W Winter Yrlg 1995
Stelbro Enhancer Ripple-Red EX-CAN-4E 3*
9-05 2x 365d 31552 4.5 1413 3.2 1008
Life (6 Lacs): 202164 4.5 9112 3.4 6867
Stelbro Regal Rene EX-3E-CAN 3*
8-09 2x 364d 21874 4.1 893 3.7 805
Life (7 Lacs): 134725 3.9 5190 3.4 4619
Stelbro Astra Starbrite VG-85-CAN
6-06 2x 295d 18210 3.8 699 3.5 631
Langstate Star VG-85-CAN
4-03 2x 292d 17996 4.3 778



**BREMER ACTIVE CHARM-ET VG-86 VG-MS @ 2-06
DAM OF LOT 21**

21

Holstein Plaza Contacts:

Steve Mower +1 240-520-5906
Jennifer Dingbaum +1 320-250-2412

Pine-Tree OHare-P-ET

71178706 *PO *TV *TL *TY
PTA +1946M +51F +52P 75%R 8/13
PTA +673NM\$ +5.5PL 2.80SCS +.8DPR
PTA +1.82T +1.49UDC +2.00FLC 75%R
GTPI +2174G / gRZG +144

Bremer Active Charm-ET

66088957 Very Good-86 VG-MS @ 2-06
GTPI+1804 +39M +40F +12P +1.29T
2-01 2x 365d 24760 4.7 1163 3.7 917

FOUR #1 EMBRYOS

• *Worldwide Export Available*

Co-Op O-Style Oman Just-ET

137611441 GM 12/11 *TR *TV *TL *TY
PTA +2095M +43F +53P 99%R 8/13
PTA +1.54T +1.22UDC +2.11FLC 95%R
GTPI +2212G

Hickorymea Signif Ohio-P-ET

140759222 Very Good-85

Alpag Iron Active-ET

ITA 6920009167 GM 8/11 *TV *TL
PTA +297M +45F +20P 99%R 8/13
PTA +0.87T +.48UDC +.15FLC 99%R
GTPI +1824G

Solid-Gold Cheesecake-ET

60697340 Very Good-88 EX-MS DOM
5-07 2x 365d 40300 4.6 1854 3.4 1384
Life: 1476d 136230 4.3 5804 3.4 4628

• *Sired by Comestar Outside-ET*

• *Sons in AI*

Full brother to Cheesecake

Solid-Gold Colby-ET

Maternal sister to Lot

NH Mogul Champ

• *One of the highest Outcross Heifers in Europe*
• *Sold for €26,500 Eurogenes Summer Sale*

3rd thru 5th Dams

Ms Solid-Gold Rud Cherry-ET

VG-89 EVVVE @ 3-07
2-04 3x 365d 40010 3.5 1382 3.0 1202
Life: 1499d 124090 3.7 4532 3.1 3907

Whiteleather Conquest 385

EX-93 EEEEE DOM
4-01 3x 365d 36200 3.9 1398 3.0 1100
Life: 1087d 101916 3.5 3586 3.0 3036

Whiteleather Rex SWD Val 2079 EX-91 2E

6-00 2x 365d 30400 4.8 1470 3.0 924
Life: 2130d 133480 4.2 5548 3.2 4246



**BREMER ACTIVE CHARM-ET VG-86 VG-MS @ 2-06
DAM OF LOT 22**



FIVE #1 EMBRYOS

- Worldwide Export Available

Holstein Plaza Contacts:

Steve Mower +1 240-520-5906
Jennifer Dingbaum +1 320-250-2412

Cookiecutter Petron Halogen

3008710387 *TV *TL *TY *TD
PTA +1063M +59F +41P 72%R 8/13
PTA +8.1PL 2.41SCS +4.1DPR
PTA +2.86T +3.11UDC +1.34FLC 72%R
GTPI +2546G

Bremer Active Charm-ET

66088957 Very Good-86 VG-MS @ 2-06
GTPI+1804 +39M +40F +12P +1.29T
2-01 2x 365d 24760 4.7 1163 3.7 917

Welcome Super Petrone-ET

69207641 *TR *TV *TL *TY *TD
PTA +1105M +47F +30P 75%R 8/13
PTA +2.25T +2.32UDC +1.67FLC 75%R
GTPI +2296G

Cookiecutter MOM Halo-ET

3007069733 Very Good-88 EX-MS @ 2-09
2-00 3x 365d 35410 5.2 1832 3.5 1241
2-03 2x 159d 14324 4.3 611 3.2 454

Alpag Iron Active-ET

ITA 6920009167 GM 8/11 *TV *TL
PTA +297M +45F +20P 99%R 8/13
PTA +0.87T +.48UDC +.15FLC 99%R
GTPI +1824G

Solid-Gold Cheesecake-ET

60697340 Very Good-88 EX-MS DOM
5-07 2x 365d 40300 4.6 1854 3.4 1384
Life: 1476d 136230 4.3 5804 3.4 4628

- Sired by Comestar Outside-ET

• Sons in AI

Full brother to Cheesecake

Solid-Gold Colby-ET

Maternal sister to Lot

NH Mogul Champ

- One of the highest Outcross Heifers in Europe
- Sold for €26,500 Eurogenes Summer Sale

3rd thru 5th Dams

Ms Solid-Gold Rud Cherry-ET

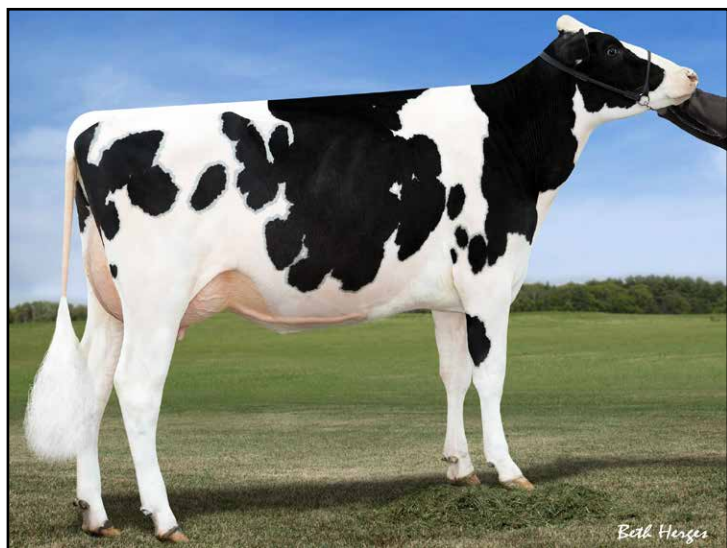
VG-89 EVVVE @ 3-07
2-04 3x 365d 40010 3.5 1382 3.0 1202
Life: 1499d 124090 3.7 4532 3.1 3907

Whiteleather Conquest 385

EX-93 EEEEE DOM
4-01 3x 365d 36200 3.9 1398 3.0 1100
Life: 1087d 101916 3.5 3586 3.0 3036

Whiteleather Rex SWD Val 2079 EX-91 2E

6-00 2x 365d 30400 4.8 1470 3.0 924
Life: 2130d 133480 4.2 5548 3.2 4246



FARNEAR-TBR BOWSR BOYANA VG-85
DAM OF LOT 23



REGANCREST-PR BARBIE EX-92
4TH DAM OF LOT 23

23

SIX #1 EMBRYOS

• Worldwide Export Available

Holstein Plaza Contacts:

Steve Mower +1 240-520-5906

Jennifer Dingbaum +1 320-250-2412

De-Su Distinction 11130-ET

70625882 *TR *TV *L *TY *TD

PTA +1636M +94F +62P 74%R 8/13

PTA +834NM\$ +5.1PL 2.80SCS +0.7DPR

PTA +2.89T +2.54UDC +1.03FLC 73%R

GTPI +2435G

Farnear-TBR Bowsr Boyana

69822164 Very Good-85 VG-MS 2YR

GTPI+2158 ++911M +12F +34P +3.49T

2-02 2x 183d 12580 6.1 773 2.9 371

Ladys-Manor PL Shamrock-ET

68977120 Very Good-85 *TR *TV *TL *TY

PTA +1984M +64F +52P 82%R 8/13

PTA +2.78T +2.22UDC +0.99FLC 77%R

GTPI +2286G

Clear-Echo M-O-M 2150-ET

68669750 VG-87 EX-MS @ 2-06 DOM

2-02 2x 183d 18678 3.9 728 3.1 579 inc.

Laeschway Jet Bowser-ET

64872951 *TV *TL *TY *TD

PTA +277M -15F +23P 99%R 8/13

PTA +1.33T +1.95UDC +1.73FLC

GTPI +1940G

Klassic Mac Barb-ET

61143553 VG-85 2YR

2-05 2x 365d 30439 4.0 1206 3.5 1067

• Maternal sister to *Klassic Big Time*

3rd thru 10th Dams

Regancrest Barbi-ET

EX-90 6YR DOM

2-00 2x 305d 23289 3.8 895 3.5 825

5-00 2x 305d 27379 3.2 869 3.5 948

Regancrest-PR Barbie-ET

EX-92 GMD DOM

2-06 2x 365d 31690 3.9 1237 3.3 1050

• *HM All-American Junior 3-Yr Old 2004*

• *Former #1 Type Cow*

Regancrest Juror Brina-ET EX-92 GMD

4-04 2x 365d 40640 3.6 1478 2.8 1140

• *Member Nom AA Best 3 Females 2000*

• *Res Grand Champ Iowa State Show 2000*

Regancrest Aerostar Bert-ET

EX-90 GMD DOM

5-02 2x 365d 37790 3.6 1357 3.0 1143

Life: 1305d 109350 3.7 4031 3.1 3350

Regancrest Mark Chairman Bea

EX-91 2E GMD

7-09 2x 365d 33630 3.8 1276 2.9 988

Life: 2036d 140130 4.1 5711 3.1 4350

Regancrest Board Chairman Bea EX-90

5-09 2x 365d 26010 4.1 1059 3.2 835

Regancrest Apache Standout Bea VG-86

4-10 2x 320d 19070 4.0 766

Life: 2432d 131940 3.6 4744

Regancrest Standout Bertrand VG-85

4-01 2x 355d 17460 3.3 571



REGANCREST S LIZETT-ET EX-90 DOM
DAM OF LOT 24

24

FOUR #1 EMBRYOS

- Worldwide Export Available

Holstein Plaza Contacts:

Steve Mower +1 240-520-5906

Jennifer Dingbaum +1 320-250-2412



Maple-Downs-I G W Atwood-ET (SEXED)

8956379C Very Good-87 *TV *TL *TY *TD

PTA +293M +47F +14P 99%R 8/13

PTA +79NM\$ -0.5PL 2.93SCS -4.8DPR

PTA +4.65T +3.34UDC +3.77FLC 99%R

GTPI +1770G

Regancrest S Lizett-ET

62496977 Excellent-90 VEVVE DOM

GTPI+1883 -194M +11 +6P +2.20T

1-11 2x 365d 23600 4.0 933 3.4 799

3-02 2x 297d 20380 4.0 821 3.2 655

4-01 2x 364d 26980 3.9 1047 3.3 886

Braedale Goldwyn

CAN 10705608 GP-CAN EX'05 *TV *TL

PTA +44M +32F +14P 99%R 8/13

PTA +2.94T +2.54UDC +2.40FLC

GTPI +1927G

MD-Delight Durham Atlee-ET

131704103 Excellent-92 EEEEE DOM

3-11 2x 365d 38290 5.5 2091 3.1 1177

- All-American Senior 3-Year-Old 2005

Picston Shottle-ET

GBR 598172 EX-95 GM 12/11 *TV *TL *TY

PTA +995M +27F +49P 99%R 8/13

PTA +2.45T +1.93UDC +1.65FLC

GTPI +1971G

Teramis Durham Lifesaver-TW

134971339 Excellent-90 EEVVE

2-05 2x 365d 29340 4.2 1237 3.5 1023

3-08 2x 329d 28690 3.7 1063 3.4 985

3rd thru 5th Dams

Teramis Sexation Lady EX-91 EX-MS 3E

10-0 2x 365d 26410 3.6 952 3.1 831

Life: 3407d 198500 3.7 7297 3.3 6621

Teramis Blackstar Life EX-92 EEEEE 2E

4-06 2x 365d 27230 3.9 1056 3.0 807

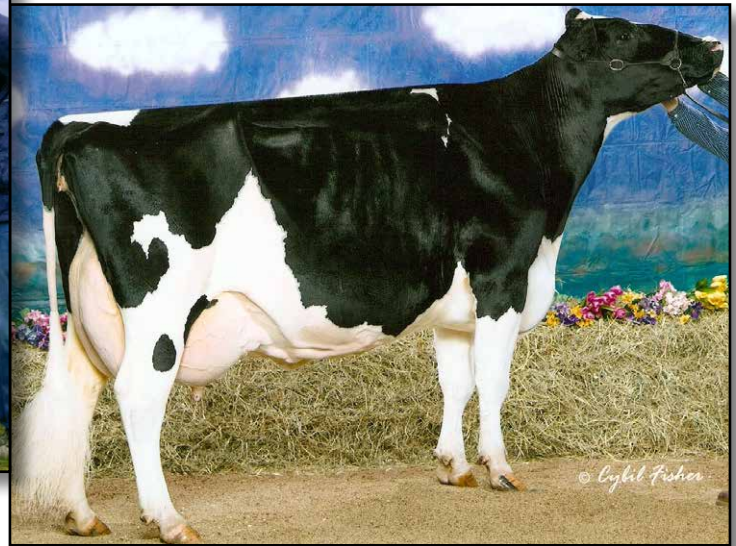
Life: 1754d 111059 3.7 4159 3.1 3415

Teramis Chief Mark Loon VG-85

4-11 2x 305d 25430 3.3 851 3.0 761



SRF-ZBW STORM LEGACY-ET EX-90 EX-MS
DAM OF LOT 25



STONE-RISE DURHAM LIZZY EX-95 3E GMD DOM
2ND DAM OF LOT 25

25

FIVE #1 EMBRYOS

• Worldwide Export Available

Holstein Plaza Contacts:

Steve Mower +1 240-520-5906

Jennifer Dingbaum +1 320-250-2412



Maple-Downs-I G W Atwood-ET (SEXED)

8956379C Very Good-87 *TV *TL *TY *TD
PTA +293M +47F +14P 99%R 8/13
PTA +79NM\$ -0.5PL 2.93SCS -4.8DPR
PTA +4.65T +3.34UDC +3.77FLC 99%R
GTPI +1770G

SRF-ZBW Storm Legacy-ET

62535784 Excellent-90 EX-MS @ 3-05
3-04 2x 305d 25060 4.2 1056 3.5 881 inc.
2-00 2x 365d 26080 3.6 932 3.4 892

Full sister to Storm Legacy

SRF-ZBW Storm Lucky EX-92

2-00 2x 310d 22606 3.3 752 3.3 737
• 2nd Jr 2-Yr-Old, NY Int'l Spring Show

Braedale Goldwyn

CAN 10705608 GP-CAN EX'05 *TV *TL
PTA +44M +32F +14P 99%R 8/13
PTA +2.94T +2.54UDC +2.40FLC
GTPI +1927G

MD-Delight Durham Atlee-ET

131704103 Excellent-92 EEEEE DOM
3-11 2x 365d 38290 5.5 2091 3.1 1177
• All-American Senior 3-Year-Old 2005

Comestar Stormatic-ET

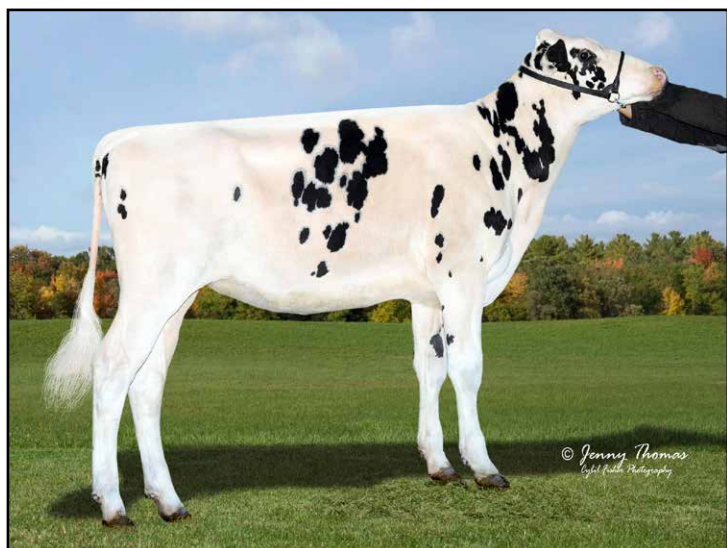
6947936C EX-CAN GM 2/07 *TV *TL
PTA +359M -5F +2P 99%R 4/13
PTA +1.70T +.76UDC +2.50FLC
GTPI +1465G

Stone-Rise Durham Lizzy

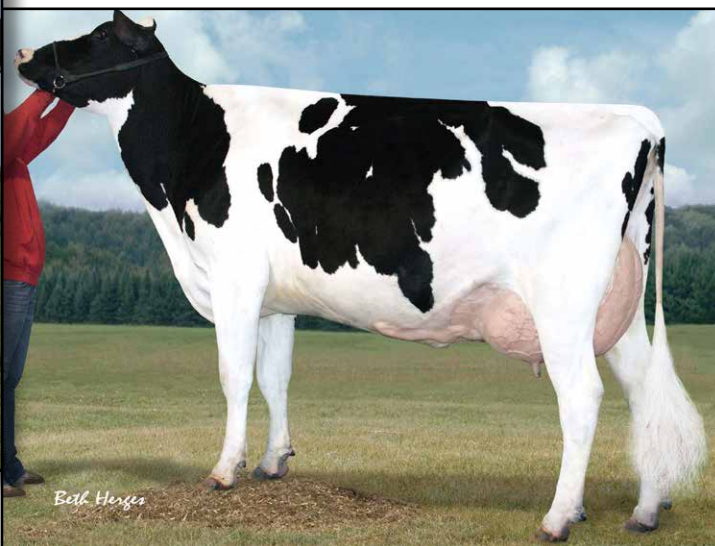
131417106 Excellent-95 3E GMD DOM
6-00 2x 365d 50470 3.4 1558 3.5 1774
Life: 2213d 229970 3.3 7675 3.4 7709
• 3 EX & 9 VG dtrs with none lower than VG
• HHM All-American 125,000 lb Cow 2007
• All-NY Aged Cow 2007
• 3rd 125,000 lb Cow, Int'l Holstein 2007
• Genetic Merit Winner, Int'l Holstein 2007
• 1st Aged Cow & BU, NY State Fair 2007
• All-NY 4-Year-Old 2005

3rd thru 12th Dams

Stone-Rise Indy Leah VG-88 VG-MS
4-01 2x 353 34590 3.5 1205 3.1 1088
Life: 2016d 198790 3.5 6919 3.1 6086
Stone-Rise Horton Lilith GP-81
3-01 2x 346d 26710 3.4 902 3.0 800
Stone-Rise Leadman Lex
VG-88 GMD DOM
9-05 2x 365d 35590 4.1 1454 3.4 1193
Podonque Bell Ellie GP-82
5-06 2x 365d 28110 3.6 1003 3.1 881
Podonque Pete Aaggie Ella VG-86
3-06 2x 331d 18780 3.8 705 3.1 525
Podonque Comet Aaggie Rena EX-90
7-03 2x 294d 21740 3.3 726 3.1 672
Podonque Bootmaker Aaggie Nora
EX-90 GMD
6-09 2x 320d 22020 3.5 764 3.1 680
Podonque X Aaggie Gloria-TW VG-86
10-0 2x 365d 15588 4.3 665
Podonque Burke Aaggie Palma VG-88
11-0 2x 305d 20480 3.5 725
P Medel Aaggie Lucille EX-96



ROYAL-VISTA ARMITAGE EMI-ET
DAM OF LOT 26



GBM BEST ELEGANT-ET EX-92 EX-MS
3RD DAM OF LOT 26

26

SIX #1 EMBRYOS

• Worldwide Export Available

Holstein Plaza Contacts:

Steve Mower +1 240-520-5906

Jennifer Dingbaum +1 320-250-2412



Seagull-Bay Diamond-ETS (SEXED)

70640251 *TV *TL *TY *TD

PTA +2000M +79F +70P 75%R 8/13

PTA +788NM\$ +5.3PL 2.56SCS +0.0DPR

PTA +2.61T +1.90UDC +1.56FLC 75%R

GTPI +2378G

Royal-Vista Armitage Emi-ET

71730329 Born: July 28, 2012

GTPI+2196 +970M +72F +45P +2.86T

Flevo Genetics Snowman-ET

388965513NLD *TV *TL

PTA +2249M +75F +65P 91%R 8/13

PTA +2.14T +1.64UDC +2.58FLC 89%R

GTPI +2144G

Ammon-Peachey Shauna-ET

66228178 Very Good-87 VG-MS

2-01 3x 276d 26760 4.0 1067 3.2 844

RMW Armitage

69056729 *TV *TL *TY *TD

PTA +1068M +74F +53P 76%R 8/13

PTA +2.36T +1.88UDC +1.80FLC 77%R

GTPI +2259G

Speck-NJ Shottle Ellen

66390197 Very Good-88 VG-MS

2-00 3x 365d 36900 3.8 1407 2.9 1080

3rd thru 9th Dams

GBM Best Elegant-ET EX-92 EX-MS

2-04 2x 305d 19720 4.9 973 3.4 667

3-07 2x 305d 28320 5.6 1599 3.4 977

GBM Durham BC Anabell EX-90 3YR

2-03 2x 305d 34081 4.0 1360 2.9 1001

3-06 2x 305d 33620 4.3 1451 3.0 1019

GBM Charles Janelle EX-93 2E DOM

6-03 2x 365d 31640 4.6 1471 3.3 1054

4-10 2x 365d 27490 4.6 1268 3.4 946

3-06 2x 365d 22930 3.9 893 3.5 795

Life: 2347d 137890 4.8 6645 3.6 4953

GBM Val Blackstar Jean-ET EX-94 3E GMD

8-05 2x 365d 37180 3.9 1458 3.0 1119

Life: 3127d 238190 4.1 9734 3.4 8000

GBM Valiant Janice EX-92 2E DOM

5-09 2x 365d 30860 3.5 1080 3.1 948

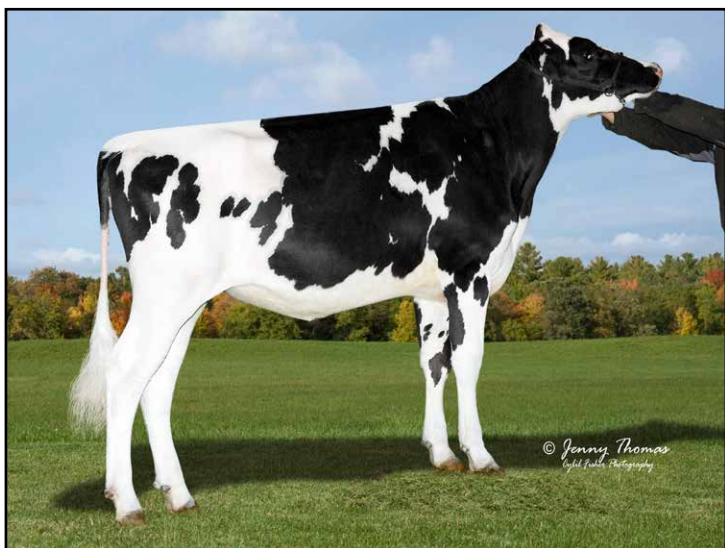
Life: 2100d 126200 3.5 4437 3.2 3996

Sylvan-Dell M C Janice EX-91 2E DOM

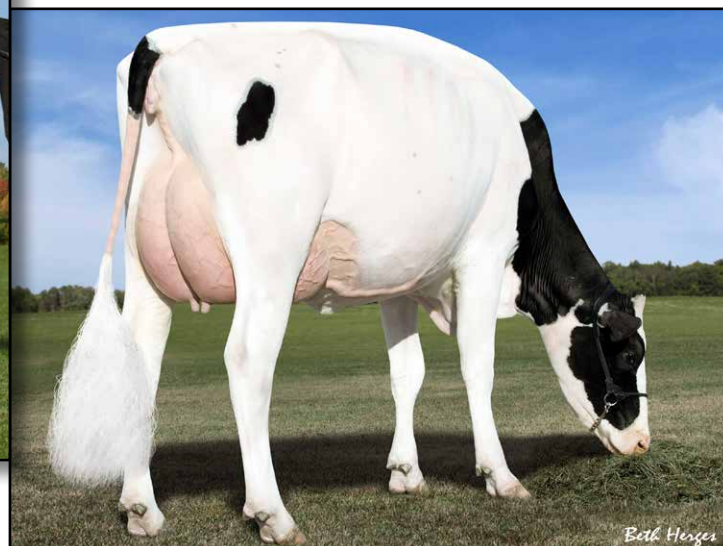
6-03 2x 314d 29600 3.9 1152

Sylvan-Dell Atlas Jill EX-90 2E

4-06 2x 305d 20820 3.5 717



DYMETHOLM SUNVIEW SELMA-ET *RC
DAM OF LOT 27



DES-Y-GEN PLANET SILK-ET *RC VG-87 VG-MS
2ND DAM OF LOT 27

27

FIVE #1 EMBRYOS

• Worldwide Export Available

Holstein Plaza Contacts:

Steve Mower +1 240-520-5906

Jennifer Dingbaum +1 320-250-2412

SEXED
semen

Mr Apples Armani *RC (SEXED)

68571374 *TV *TL *TY *TD

PTA -502M +68F +21P 77%R 8/13

PTA +511NM\$ +2.6PL 2.84SCS +0.2DPR

PTA +3.41T +3.03UDC +3.25FLC 77%R

GTPI +2138G

Dymetholm Sunview Selma-ET *RC

71661930 Born: April 8, 2012

GTPI+2066 +1575M +63F +47P +1.93T

• Maternal sister to SYMPATICO *RC

GTPI+2240 +707NM\$ +2.38T

• Maternal sister to STOIC *RC

GTPI+2297 +739NM\$ +2.72T

• Maternal sister to SENECA *RC

GTPI+2223 +657NM\$ +2.30T

Maternal sister to Samba

Dymetholm Sunview Sienna *RC

GTPI+2058 +759M +64F +35P +2.46

dam of: OConnors Aikman Scarlet-Red

GPA-LPI+3225 • GTPI+2462

No. 1 Red Female GTPI/GLPI in the World!

Braedale Goldwyn

CAN 10705608 GP-CAN EX'05 *TV *TL

PTA +44M +32F +14P 99%R 8/13

PTA +2.94T +2.54UDC +2.40FLC

GTPI +1927G

KHW Regiment Apple-Red-ET

Excellent-95 DOM

4-01 2x 365d 35750 4.7 1682 3.7 1314

Life: 1972d 158680 4.8 7683 3.8 6034

Genervations Epic-ET

11104016C *TV *TL *TY *TD

PTA +1785M +53F +54P 76%R 8/13

PTA +2.59T +1.97UDC +2.53FLC 75%R

GTPI +2332G

Des-Y-Gen Planet Silk-ET *RC *TY

106109413C Very Good-87 VG-MS @ 2-05

GTPI+2137 +1385M +87F +43P +2.20T

2-02 2x 365d 29990 4.5 1351 3.2 960

• #5 GTPI Red/*RC Cow, Locator List 8/13

• Nominated HI Global Red Impact Cow

3rd thru 12th Dams

Gen-I-Beq Bolton Silence *RC

VG-85-2YR-CAN

2-04 2x 365d 30002 4.6 1391 3.6 1069

Gen-I-Beq Goldwyn Secret VG-87-CAN 4*

5-05 2x 365d 30573 4.5 1389 3.4 1038

Gen-I-Beq Durham Sherry VG-87-CAN 7*

5-02 2x 365d 40036 3.9 1574 3.2 1268

Glen Drummond Splendor

VG-86-2YR-CAN 36*

4-10 2x 314d 26510 4.2 1124 3.2 840

Glen Drummond Aero Flower

VG-88-CAN 18*

2-03 2x 326d 25622 4.0 1032 3.4 882

Glen Drummond Shower EX-CAN 13*

4-10 2x 365d 28583 4.8 1380 3.6 1016

Glen Drummond S C Jo Beth

EX-2E-CAN 7*

Life (6 Lacs): 141637 4.2 5994 3.2 3593

• Grand Champion Brant-Wentworth 1984

Glen Drummond Matt Beth VG-85 4*

11-10 2x 365d 25038 3.7 935

Life (5 Lacs): 105953 4.1 4295

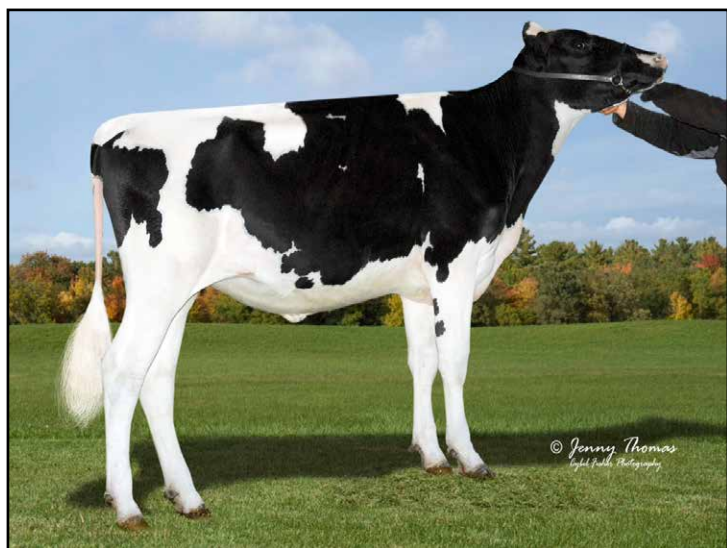
Glen Drummond Marquis Beth VG-CAN

Life (8 Lacs): 112688 4.2 4766

Ferglynn Rag Apple Bertha VG-CAN 3*

7-00 2x 365d 27796 4.7 1303

Life (9 Lacs): 208857 4.0 8344



TRAMILDA CHIP ROSE-ET
DAM OF LOT 28



KINGSMILL ROY ROULETTE-ET EX-92 2E
2ND DAM OF LOT 28

28

FIVE #1 EMBRYOS

• Worldwide Export Available

Holstein Plaza Contacts:

Steve Mower +1 240-520-5906

Jennifer Dingbaum +1 320-250-2412

SEXED
semen

KHW Elm-Park Acme-ET *RC (SEXED)

61720218 Excellent-90 GM *TV *TL *TD
PTA -93M +25F +16P 98%R 8/13
PTA +3.2PL 3.09SCS -.2DPR
PTA +2.75T +3.03UDC +1.54FLC 96%R
GTPI +1876G

Tramilda Chip Rose-ET

141727165 Born: December 9, 2011
GTPI+1695 +3.24T +2.39UDC +2.07FLC
• Chip Rose is pregnant and due in March

Ladino Park Talent-Imp-ET

AUS 930377 EX-90 ST*03 *RC *TV *TL
PTA -252M -32F +3P 99%R 8/13
PTA +2.15T +2.33UDC +1.13FLC
GTPI +1436G

Kamps-Hollow Altitude-ET *RC

129136431 EX-95 EEEEE 2E DOM
7-00 2x 365d 39690 4.7 1849 3.5 1385

Mr Chassity Gold Chip-ET

140145553 100%RHA-NA *TR *TV *TL
PTA +678M +34F +13P 77%R 8/13
PTA +3.85T +3.06UDC +3.05FLC
GTPI +2053G

Kingsmill Roy Roulette-ET

63016084 Excellent-92 EEEEE 2E
4-03 2x 310d 23256 3.9 914 3.0 709
2-04 2x 365d 18545 3.8 699 3.1 573
• 14th generation Excellent!

3rd thru 15th Dams

Astrahoe LJ Rosa Rebel-ET EX-92 2E
7-05 2x 365d 48580 4.2 2021 3.0 1468
Life: 1186d 110960 3.9 4326 3.2 3529
Pinehurst Royal Rosa-ET EX-91 2E
3-10 3x 365d 41395 3.3 1358 2.8 1145
Life: 1212d 115400 3.5 4073 3.1 3593
Pinehurst Roulade EX-92 EEEEE 2E
5-00 3x 365d 35130 3.6 1271 3.2 1115
Life: 1761d 142070 3.8 5395 3.3 4705
Pinehurst Sweet Cleo EX-90 EEEVEV
6-00 3x 365d 40380 4.4 1776 3.2 1305
Pinehurst Sweet Freedom EX-90 VEVE
5-07 3x 330d 34520 4.3 1500 3.1 1084
Pinehurst Sweet Delite EX-91 3E GMD
8-10 3x 365d 28460 4.2 1194 3.2 917
Life: 2228d 151600 4.0 6116 3.2 4907
Pinehurst Rapture EX-96 4E GMD
8-02 3x 365d 30370 4.2 1290 3.1 948
Life: 2297d 160790 3.9 6337 3.0 2469
Pinehurst Fragrance EX-90 2E
4-8 3x 365d 34490 3.6 1234
Hayssen Fond Ariel EX-90 2E
8-06 2x 328d 23330 3.2 753
Hayssen D V Audrey EX-90 2E
9-03 2x 365d 23670 4.4 1035
Whirlhill Q Rag Apple Ariel EX-92
6-02 2x 365d 26755 4.2 1134
Arlite Posch EX-92 GMD
5-03 2x 365d 21193 3.7 779
Audrey Posch EX-93 GMD
14-2 2x 365d 25572 3.7 948



R-E-W SL CHARDONAY
DAM OF LOT 29



REGANCREST S CHASSITY-ET EX-92 DOM
3RD DAM OF LOT 29

29

Holstein Plaza Contacts:

Steve Mower +1 240-520-5906

Jennifer Dingbaum +1 320-250-2412



Seagull-Bay Supersire-ET (SEXED)

69981349 *TV *TL *TY *TD

PTA +2387M +112F +77P 75%R 8/13

PTA +5.8PL 2.80SCS -0.2DPR

PTA +2.37T +1.73UDC +1.37FLC 75%R

GTPI +2464G

R-E-W SL Chardonay-ET

3010991501 Born: June 28, 2012

GTPI+2182 +1059M +43F +34P +2.98T

FOUR #1 EMBRYOS

• Worldwide Export Available

Roylane Socra Robust-ET

64966739 Very Good-88 *TR *TV *TL *TD

PTA +1441M +82F +50P 82%R 4/13

PTA +1.98T +1.96UDC +2.00FLC

GTPI +2245G

Ammon-Peachey Shauna-ET

66228178 Very Good-87 VG-MS

2-01 3x 365d 35120 4.1 1427 3.3 1145

Glen-Toctin Super Large-ET

140761397 *TV *TL TY

PTA +1419M +32F +42P 77%R 8/13

PTA +3.22T +2.75UDC +2.32FLC 77%R

GTPI +2249G

Courtlane-UR Mac Charm-ET

64045602 Very Good-85 VG-MS DOM

2-02 2x 365d 30980 4.0 1236 3.1 962

3rd thru 11th Dams

Regancrest S Chassity-ET EX-92 DOM

3-10 2x 365d 42280 4.3 1798 2.7 1150

Life: 1071d 105520 4.2 4383 3.0 3158

• Sold for \$1,500,000 as a package with sons & dtrs in the 2009 Int'l Intrigue Sale

• Global Cow of the Year 2011

Regancrest Cinderella-ET

EX-92 EEEEE 2E GMD DOM

5-00 2x 365d 34220 4.1 1418 3.1 1074

• 1st Sr 3-Yr-Old Cow Midwest Sprg/Nat 2007

• 1st Sr 2-Yr-Old Cow Mideast Fall/Nat 2006

Regancrest-PR Barbie-ET

EX-92 GMD DOM

2-06 2x 365d 31690 3.9 1237 3.3 1050

• HM All-American Junior 3-Yr Old 2004

• Former #1 Type Cow

Regancrest Juror Brina-ET EX-92 GMD

4-04 2x 365d 40640 3.6 1478 2.8 1140

• Member Nom AA Best 3 Females 2000

• Res Grand Champ Iowa State Show 2000

Regancrest Aerostar Bert-ET

EX-90 GMD DOM

5-02 2x 365d 37790 3.6 1357 3.0 1143

Life: 1305d 109350 3.7 4031 3.1 3350

Regancrest Mark Chairman Bea

EX-91 2E GMD

7-09 2x 365d 33630 3.8 1276 2.9 988

Life: 2036d 140130 4.1 5711 3.1 4350

Regancrest Board Chairman Bea EX-90

5-09 2x 365d 26010 4.1 1059 3.2 835

Regancrest Apache Standout Bea VG-86

4-10 2x 320d 19070 4.0 766

Life: 2432d 131940 3.6 4744

Regancrest Standout Bertrand VG-85

4-01 2x 355d 17460 3.3 571



UFM-DUBS SHERAY-ET EX-90 DOM
3RD DAM OF LOT 30

30

FOUR #1 EMBRYOS

- Worldwide Shipment Available

Holstein Plaza Contacts:

Steve Mower +1 240-520-5906

Jennifer Dingbaum +1 320-250-2412



Seagull-Bay Supersire-ET (SEXED)

69981349 *TV *TL *TY *TD

PTA +2387M +112F +77P 75%R 8/13

PTA +5.8PL 2.80SCS -0.2DPR

PTA +2.37T +1.73UDC +1.37FLC 75%R

GTPI +2464G

Jolicap Large Whoopi-ET

72028338

Born: September 3, 2012

GTPI+2277 +1371M +46F +48P +3.05T

Roylane Socra Robust-ET

64966739 Very Good-88 *TR *TV *TL *TD

PTA +1441M +82F +50P 82%R 4/13

PTA +1.98T +1.96UDC +2.00FLC

GTPI +2245G

Ammon-Peachey Shauna-ET

66228178 Very Good-87 VG-MS

2-01 3x 365d 35120 4.1 1427 3.3 1145

Glen-Toctin Super Large-ET

140760397 *TV *TL *TY

PTA +1419M +32F +42P 77%R 8/13

PTA +3.22T +2.75UDC +2.32FLC 77%R

GTPI +2249G

UFM-Dubs Whisper-ET

70157397

GTPI+1962 +592M +40F +24P +2.44T

sired by: De-Su Observer

- Whisper was lost after calving, she looked very promising!

3rd thru 8th Dams

UFM-Dubs Sheray-ET EX-90 EX-MS DOM

6-00 2x 365d 31760 4.4 1402 3.3 1057

UFM-Dubs Eroy VG-87 GMD DOM

4-06 2x 365d 40330 4.4 1789 3.1 1239

Life: 1589d 129380 4.4 5738 3.3 4298

UFM-Dubs Sam Erin EX-90 2E GMD DOM

4-02 2x 365d 39450 4.1 1631 3.1 1219

Life: 1282d 106440 4.3 4526 3.2 3424

UFM-Dubs Patron Ellen EX-90 EEEEEV

2-11 2x 365d 26330 4.2 1106 3.3 878

Life: 1582d 110460 4.1 4559 3.3 3604

UFM Antci Bell VG-87 VEVVV

4-00 2x 365d 29120 3.6 1060 3.2 928

Life: 1744d 122410 3.8 4647 3.2 3901

UFM Jax Antci VG-85 GMD DOM

4-01 2x 305d 27360 3.7 1012 3.0 832

Life: 1839d 138700 3.8 5237 3.0 4164



UFM-DUBS SHERAY-ET EX-90 DOM
3RD DAM OF LOT 31

31

TWO #2 EMBRYOS

- Worldwide Shipment Available

Holstein Plaza Contacts:

Steve Mower +1 240-520-5906

Jennifer Dingbaum +1 320-250-2412



Seagull-Bay Supersire-ET (SEXED)

69981349 *TV *TL *TY *TD

PTA +2387M +112F +77P 75%R 8/13

PTA +5.8PL 2.80SCS -0.2DPR

PTA +2.37T +1.73UDC +1.37FLC 75%R

GTPI +2464G

Jolicap Large Whoopi-ET

72028338

Born: September 3, 2012

GTPI+2277 +1371M +46F +48P +3.05T

Roylane Socra Robust-ET

64966739 Very Good-88 *TR *TV *TL *TD

PTA +1441M +82F +50P 82%R 4/13

PTA +1.98T +1.96UDC +2.00FLC

GTPI +2245G

Ammon-Peachey Shauna-ET

66228178 Very Good-87 VG-MS

2-01 3x 365d 35120 4.1 1427 3.3 1145

Glen-Toctin Super Large-ET

140760397 *TV *TL *TY

PTA +1419M +32F +42P 77%R 8/13

PTA +3.22T +2.75UDC +2.32FLC 77%R

GTPI +2249G

UFM-Dubs Whisper-ET

70157397

GTPI+1962 +592M +40F +24P +2.44T

sired by: De-Su Observer

- Whisper was lost after calving, she looked very promising!

3rd thru 8th Dams

UFM-Dubs Sheray-ET EX-90 EX-MS DOM

6-00 2x 365d 31760 4.4 1402 3.3 1057

UFM-Dubs Eroy VG-87 GMD DOM

4-06 2x 365d 40330 4.4 1789 3.1 1239

Life: 1589d 129380 4.4 5738 3.3 4298

UFM-Dubs Sam Erin EX-90 2E GMD DOM

4-02 2x 365d 39450 4.1 1631 3.1 1219

Life: 1282d 106440 4.3 4526 3.2 3424

UFM-Dubs Patron Ellen EX-90 EEEEEV

2-11 2x 365d 26330 4.2 1106 3.3 878

Life: 1582d 110460 4.1 4559 3.3 3604

UFM Antci Bell VG-87 VEVVV

4-00 2x 365d 29120 3.6 1060 3.2 928

Life: 1744d 122410 3.8 4647 3.2 3901

UFM Jax Antci VG-85 GMD DOM

4-01 2x 305d 27360 3.7 1012 3.0 832

Life: 1839d 138700 3.8 5237 3.0 4164



**PIERCE-VALE DURHM R TOBI-ET EX-90
DAM OF LOT 32**

32

Holstein Plaza Contacts:

Steve Mower +1 240-520-5906
Jennifer Dingbaum +1 320-250-2412

Gillette Windbrook

7816429C 91%RHA-NA *TV *TL *TY *TD
PTA +938M +57F +34P 91%R 8/13
PTA +309NM\$ +0.1PL 2.97SCS -1.9DPR
PTA +2.71T +2.06UDC +2.64FLC
GTPI +1891G

Pierce-Vale Durhm R Tobi-ET

139394515 Excellent-90 EEVVE @ 3-07
1-11 2x 365d 23280 3.7 870 3.2 747
3-03 2x 365d 29270 3.8 1102 3.2 935
• Will be scored again end of Nov., should easily gain a point or two!

FOUR #1 EMBRYOS

• *Worldwide Export Available*

Gillette Brilea F B I-ET

89524C EX-94-CAN EXTRA'05 *TV *TL
PTA +1508M +40F +36P 99%R 8/13
PTA +1.86T +1.30UDC +1.54FLC
GTPI +1766G

Gillette Blitz 2nd Wind-ET

7352248C VG-88-CAN 34*
2-02 3x 365d 39096 3.6 1422 3.0 1182

Regancrest Elton Durham

2250783 EX-90 100%RHA-NA *TR *CV *TL
PTA -257M -32F +5P 99%R 8/13
PTA +2.46T +2.23UDC +2.09FLC
GTPI +1584G

Castleholm Pierce Tonya-ET

136365561 Excellent-91 EEVVE
2-05 2x 365d 20060 4.6 927 3.2 644
4-00 2x 365d 30310 4.4 1321 3.2 970

3rd thru 15th Dams

Astrahoe R Gibson Reagan EX-92 EEVVE
2-06 2x 356d 24300 3.6 884 2.9 713
3-08 2x 365d 28050 3.8 1059 3.1 868
Pinehurst Royal Rosa-ET EX-91 2E
3-10 3x 365d 41395 3.3 1358 2.8 1145
Life: 1212d 115400 3.5 4073 3.1 3593
Pinehurst Roulade EX-92 EEEEE 2E
5-00 3x 365d 35130 3.6 1271 3.2 1115
Life: 1761d 142070 3.8 5395 3.3 4705
Pinehurst Sweet Cleo EX-90 EEVEV
6-00 3x 365d 40380 4.4 1776 3.2 1305
Pinehurst Sweet Freedom EX-90 VEVE
5-07 3x 330d 34520 4.3 1500 3.1 1084
Pinehurst Sweet Delite EX-91 3E GMD
8-10 3x 365d 28460 4.2 1194 3.2 917
Life: 2228d 151600 4.0 6116 3.2 4907
Pinehurst Rapture EX-96 4E GMD
8-02 3x 365d 30370 4.2 1290 3.1 948
Life: 2297d 160790 3.9 6337 3.0 2469
Pinehurst Fragrance EX-90 2E
4-8 3x 365d 34490 3.6 1234
Hayssen Fond Ariel EX-90 2E
8-06 2x 328d 23330 3.2 753
Hayssen D V Audrey EX-90 2E
9-03 2x 365d 23670 4.4 1035
Whirlhill Q Rag Apple Ariel EX-92
6-02 2x 365d 26755 4.2 1134
Arlite Posch EX-92 GMD
5-03 2x 365d 21193 3.7 779
Audrey Posch EX-93 GMD
14-2 2x 365d 25572 3.7 948



**SAVAGE-LEIGH SHOTTLE LEONY EX-91 EX-MS
DAM OF LOT 33**



**SAVAGE-LEIGH LEONA-ET EX-96 EX-MS
2ND DAM OF LOT 33**

33

TWO #1 EMBRYOS

- Worldwide Export Available

Holstein Plaza Contacts:

Steve Mower +1 240-520-5906
Jennifer Dingbaum +1 320-250-2412

Mr Chassity Gold Chip-ET

140145553 Excellent-90 *TR *TV *TL *TD
PTA +678M +34F +13P 77%R 8/13
PTA +415NM\$ +2.4PL 2.56SCS -.6DPR
PTA +3.85T +3.06UDC +3.05FLC 77%R
GTPI +2053G

Savage-Leigh Shottle Leony

8403001511881 Excellent-91 EX-MS
2-01 2x 365d 32528 4.5 1474 3.1 1017

Braedale Goldwyn

CAN 10705608 GP-CAN EX'05 *TV *TL
PTA +44M +32F +14P 99%R 8/13
PTA +2.94T +2.54UDC +2.40FLC
GTPI +1927G

Regancrest S Chassity-ET

62496899 Excellent-92 EEEVE DOM
3-10 2x 365d 42280 4.3 1798 2.7 1150
Life: 1071d 105520 4.2 4383 3.0 3158

Picston Shottle-ET

GBR 598172 EX-95 GM 12/11 *TV *TL *TY
PTA +995M +27F +49P 99%R 8/13
PTA +2.45T +1.93UDC +1.65FLC
GTPI +1971G

Savage-Leigh Leona-ET

61604187 Excellent-96 EEEEE
3-01 2x 365d 33720 4.0 1335 3.3 1122
• Res All-American 125,000 Lb Cow 2012
• Grand Champion, Eastern Fall Nat'l 2012
• Res Senior Champ, Eastern Fall Nat'l 2011
• Nom All-American & All-Canadian 2010
• 6th Jr 3-Yr Old, Int'l Holstein Show 2008
• HHM All-American Jr 2-Yr Old 2007

4th thru 10th Dam

Savage-Leigh Licorice-ET EX-92 EX-MS GMD DOM

4-02 2x 365d 51220 4.3 2179 3.3 1693
Life: 1018d 113740 4.4 4968 3.4 3858

- Dam of Nom AA Produce of Dam 2007
- HHM All-American 5-Yr Old Cow 2006

Savage-Leigh Bellwood Linda EX-92 2E GMD DOM

2-10 2x 365d 40240 5.8 2349 3.4 1358
Life: 1312d 126760 5.2 6576 3.2 4076

- Nom All-American Jr. 3-Year-Old 1999
- Nom Global Cow of the Year 2005

Savage-Leigh Star Linda-ET VG-87 GMD

2-02 2x 365d 30890 4.0 1236 3.1 952

Savage-Leigh Glenview Linda

EX-90 EVVE GMD DOM
6-08 2x 365d 41820 4.6 1936 3.0 1247
Life: 1892d 150300 4.4 6636 3.2 4813

Savage-Leigh Lindas Chairman GP-84

5-10 2x 365d 30620 3.8 1167 3.3 1013
Life: 1972d 121550 3.9 4718 3.3 4013

Savage-Leigh Creek Lydia VG-88

4-11 2x 344d 16390 4.2 685 3.1 511

Savage-Leigh Kate Linda VG-85

6-01 2x 305d 19940 4.0 793



KINGSMILL ROY ROULETTE-ET EX-92 2E
DAM OF LOT 34

34

FIVE #1 EMBRYOS

• Worldwide Export Available

Holstein Plaza Contacts:

Steve Mower +1 240-520-5906

Jennifer Dingbaum +1 320-250-2412

Regancrest Elton Durham-ET

2250783 EX-90 GM *TR *CV *TL
PTA -257M -32F +5P 99%R 8/13
PTA +24NM\$ +.0PL 2.90SCS +.3DPR
PTA +2.46T +2.23UDC +2.09FLC
GTPI +1584G

Kingsmill Roy Roulette-ET

63016084 Excellent-92 EEEEE 2E
6-04 2x 256d 22094 3.8 889 2.7 563 inc.
4-03 2x 347d 24327 3.8 932 3.0 736
2-04 2x 365d 18545 3.8 699 3.1 573
• 14th generation Excellent!

Emprise Bell Elton

1912270 EX-95 *CV *BL *TD
PTA -149M -2F +4P 99%R 8/13
PTA -.84T -1.06UDC +1.09FLC
GTPI +1138G

Snow-N Denises Dellia

12895802 Excellent-95 2E GMD DOM
7-06 2x 365d 35610 4.0 1431 3.1 1103

Roylane Jordan-ET

17064727 Excellent-95 GM 2/04 *TV *TL
PTA -329M -9F -13P 99%R 4/13
PTA +2.08T +1.98UDC +.37FLC
GTPI +1387G

Astrahoe LJ Rosa Rebel-ET

130430762 Excellent-92 EEEVV 2E
7-05 2x 365d 48580 4.2 2021 3.0 1468
3-02 3x 305d 32120 3.9 1250 3.1 1007
Life: 1186d 110960 3.9 4326 3.2 3529

3rd thru 14th Dams

Pinehurst Royal Rosa-ET EX-91 2E

3-10 3x 365d 41395 3.3 1358 2.8 1145
Life: 1212d 115400 3.5 4073 3.1 3593

Pinehurst Roulade EX-92 EEEEE 2E

5-00 3x 365d 35130 3.6 1271 3.2 1115
Life: 1761d 142070 3.8 5395 3.3 4705

Pinehurst Sweet Cleo EX-90 EEVEV

6-00 3x 365d 40380 4.4 1776 3.2 1305

Pinehurst Sweet Freedom EX-90 VEVE

5-07 3x 330d 34520 4.3 1500 3.1 1084

Pinehurst Sweet Delite EX-91 3E GMD

8-10 3x 365d 28460 4.2 1194 3.2 917

Life: 2228d 151600 4.0 6116 3.2 4907

Pinehurst Rapture EX-96 4E GMD

8-02 3x 365d 30370 4.2 1290 3.1 948

Life: 2297d 160790 3.9 6337 3.0 2469

Pinehurst Fragrance EX-90 2E

4-8 3x 365d 34490 3.6 1234

Hayssen Fond Ariel EX-90 2E

8-06 2x 328d 23330 3.2 753

Hayssen D V Audrey EX-90 2E

9-03 2x 365d 23670 4.4 1035

Whirlhill Q Rag Apple Ariel EX-92

6-02 2x 365d 26755 4.2 1134

Arlite Posch EX-92 GMD

5-03 2x 365d 21193 3.7 779

Audrey Posch EX-93 GMD

14-2 2x 365d 25572 3.7 948



KINGSMILL ROY ROULETTE-ET EX-92 2E
DAM OF LOT 35

35

Holstein Plaza Contacts:

Steve Mower +1 240-520-5906
Jennifer Dingbaum +1 320-250-2412

Regancrest Elton Durham-ET

2250783 EX-90 GM *TR *CV *TL
PTA -257M -32F +5P 99%R 8/13
PTA +24NM\$ +.0PL 2.90SCS +.3DPR
PTA +2.46T +2.23UDC +2.09FLC
GTPI +1584G

Kingsmill Roy Roulette-ET

63016084 Excellent-92 EEEEE 2E
6-04 2x 256d 22094 3.8 889 2.7 563 inc.
4-03 2x 347d 24327 3.8 932 3.0 736
2-04 2x 365d 18545 3.8 699 3.1 573
• 14th generation Excellent!

FIVE #2 EMBRYOS

• Worldwide Export Available

Emprise Bell Elton

1912270 EX-95 *CV *BL *TD
PTA -149M -2F +4P 99%R 8/13
PTA -.84T -1.06UDC +1.09FLC
GTPI +1138G

Snow-N Denises Dellia

12895802 Excellent-95 2E GMD DOM
7-06 2x 365d 35610 4.0 1431 3.1 1103

Roylane Jordan-ET

17064727 Excellent-95 GM 2/04 *TV *TL
PTA -329M -9F -13P 99%R 4/13
PTA +2.08T +1.98UDC +.37FLC
GTPI +1387G

Astrahoe LJ Rosa Rebel-ET

130430762 Excellent-92 EEEVV 2E
7-05 2x 365d 48580 4.2 2021 3.0 1468
3-02 3x 305d 32120 3.9 1250 3.1 1007
Life: 1186d 110960 3.9 4326 3.2 3529

3rd thru 14th Dams

Pinehurst Royal Rosa-ET EX-91 2E
3-10 3x 365d 41395 3.3 1358 2.8 1145
Life: 1212d 115400 3.5 4073 3.1 3593
Pinehurst Roulade EX-92 EEEEE 2E
5-00 3x 365d 35130 3.6 1271 3.2 1115
Life: 1761d 142070 3.8 5395 3.3 4705
Pinehurst Sweet Cleo EX-90 EEVEV
6-00 3x 365d 40380 4.4 1776 3.2 1305
Pinehurst Sweet Freedom EX-90 VEVE
5-07 3x 330d 34520 4.3 1500 3.1 1084
Pinehurst Sweet Delite EX-91 3E GMD
8-10 3x 365d 28460 4.2 1194 3.2 917
Life: 2228d 151600 4.0 6116 3.2 4907
Pinehurst Rapture EX-96 4E GMD
8-02 3x 365d 30370 4.2 1290 3.1 948
Life: 2297d 160790 3.9 6337 3.0 2469
Pinehurst Fragrance EX-90 2E
4-8 3x 365d 34490 3.6 1234
Hayssen Fond Ariel EX-90 2E
8-06 2x 328d 23330 3.2 753
Hayssen D V Audrey EX-90 2E
9-03 2x 365d 23670 4.4 1035
Whirlhill Q Rag Apple Ariel EX-92
6-02 2x 365d 26755 4.2 1134
Arlite Posch EX-92 GMD
5-03 2x 365d 21193 3.7 779
Audrey Posch EX-93 GMD
14-2 2x 365d 25572 3.7 948



TRI-KOEBEL DUR EXPLOSION-ET VG-87-2YR
FULL SISTER TO LOT 36



KRULL ENCORE ELSIE-ET EX-94 EEEEE 2E
2ND DAM OF LOT 36

36

FIVE #1 EMBRYOS

- Worldwide Export Available

Holstein Plaza Contacts:

Steve Mower +1 240-520-5906

Jennifer Dingbaum +1 320-250-2412

Braedale Goldwyn

CAN 10705608 GP-CAN EX'05 *TV *TL
PTA +44M +32F +14P 99%R 8/13
PTA +353NM\$ +1.5PL 2.64SCS +0.0DPR
PTA +2.94T +2.54UDC +2.40FLC
GTPI +1927G

Budjon-JK Terason Esmeena-ET

136970428 Excellent-90 EEEEE
4-07 2x 365d 27120 3.8 1038 3.2 877
3-06 2x 346d 23960 4.0 951 3.3 784
2-02 2x 365d 20330 4.0 821 3.5 717

Maternal sisters to Esmeena

Mil-Lon S S Erica-ET EX-92 EEEEE *RC
4-08 2x 365d 45320 4.3 1928 3.0 1361

Budjon-JK Linjet Ethel-ET EX-91 EX-MS
4-01 2x 365d 35712 4.1 1453 3.3 1172

Shoremar James

5902195C GP-81-CAN GM 2/04 *TV *TL
PTA -624M +7F +4P 99%R 8/13
PTA +.64T +.62UDC +.18FLC
GTPI +1239G

Braedale Baler Twine

6860888C Very Good-86-CAN 29*
2-01 2x 365d 30906 4.9 1521 3.4 1052

Innwood Terrason

6581869C Excellent-96-CAN *TV *TL
PTA -1030M -24F -26P 99%R 8/13
PTA +2.15T +1.56UDC +1.38FLC
GTPI +1229G

Krull Encore Elsie-ET

132549053 Excellent-94 EEEEE 2E
4-08 2x 365d 38740 3.8 1471 3.3 1284
7-06 2x 365d 34690 3.7 1283 3.4 1175
2-06 2x 365d 31516 3.6 1136 3.4 1073
Nom. All-American Produce of Dam 2008
• Reserve All-Wisconsin 5 Year Old 2007
• Grand Champion Midwest Fall Nat'l 2006
• Res. Sr Champion Mideast Fall Nat'l 2006
• HM All-American Sr. 2 Year Old 2004

Maternal sister to Lot 36

Tri-Koebel Dur Explosion-ET VG-87-2YR
• HM All-Canadian Milking Yearling 2010

3rd thru 8th Dams

Krull Elegant Rose EX-93 2E GMD DOM
6-00 2x 365d 35770 4.0 1446 3.3 1167
Life: 2199d 139670 3.7 5174 3.4 4698

Krull Broker Elegance
EX-96 3E GMD DOM

5-07 2x 365d 40950 3.7 1522 3.1 1272
Life: 2356d 183710 3.7 6878 3.2 5919

- HM All-American Aged Cow 1999
- HM All-Canadian Mature Cow 1999
- 1st International 125,000 lb Cow 2000
- 2nd Mid-W Spr Nat 4Y Cow 1997

Krull Starbuck Excellency
EX-90 GMD DOM

3-03 2x 365d 27140 3.5 937 3.4 930
Krull TT Excellency EX-90 VEEE DOM

3-02 2x 363d 24319 3.5 862 3.4 829
Life: 1733d 109780 3.7 4077 3.3 3605

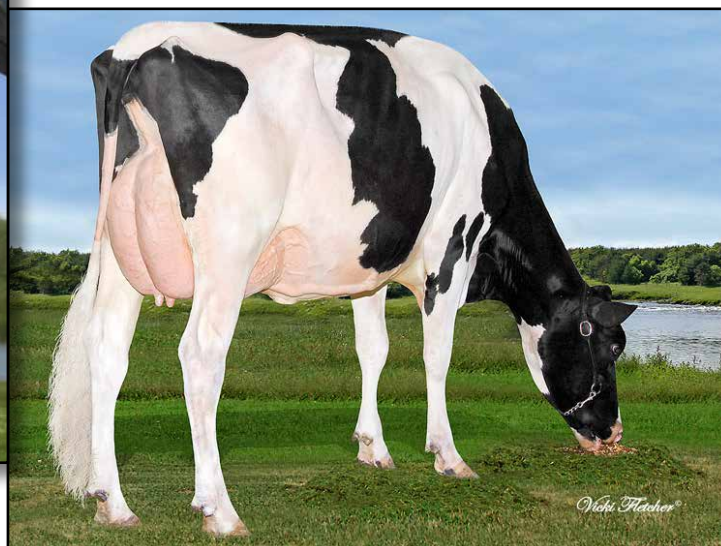
Krull Boot Mark Excellency EX-92 2E GMD
6-06 2x 365d 27410 3.8 1040 3.1 868

Life: 3026d 201440 3.5 7105 3.0 4634
Krull Kingstead Excellency EX-92 4E GMD

12-4 2x 323d 21920 3.5 772
Life: 3364d 179790 3.6 6436



DONNANVIEW A SARAH VG-87
DAM OF LOT 37



ARCADIA D LOU SOFIA VG-88
2ND DAM OF LOT 37

37

Holstein Plaza Contacts:

Steve Mower +1 240-520-5906
Jennifer Dingbaum +1 320-250-2412

Regancrest altaIota

61898306 *TV *TL *TY *TD
PTA +1001M +77F +49P 98%R 8/13
PTA +597NM\$ +2.2PL 2.92SCS +1.7DPR
PTA +2.24T +1.84UDC +1.44FLC 95%R
GTPI +2187

Donnanview A Sarah

10907602C Very Good-87-4YR-CAN
GLPI+2798 +750M +97F +42P +10T
1-11 3x 365d 29539 5.3 1576 3.7 1096
• 1 Superior Lactation Award

FOUR #1 EMBRYOS

• Worldwide Shipment Available

O-Bee Manfred Justice-ET

122358313 *TR *TV *TL *TD
PTA +736M +61F +44P 99%R 8/13
PTA -0.12T -0.36UDC +1.00FLC
GTPI +1979G

Regancrest Ito Isa

60870571 Very Good-86-2YR GMD
2-00 2x 365d 31510 3.6 1142 3.5 1109

Golden-Oaks St Alexander

61133837 *TR *TV *TL *TY *TD
PTA +510M +73F +13P 99%R 8/13
PTA +2.20T +1.51UDC +1.94FLC 99%R
GTPI +1745G

Arcadia D Lou Sofia

8994989C Very Good-88-5YR-CAN 2*
2-04 2x 365d 39559 5.0 1997 3.3 1318
4-09 2x 365d 41771 4.6 1903 3.3 1391

3rd thru 12th Dams

Belfast M Goldwyn Shelly

EX-91-CAN EX-92-MS 9*
2-02 2x 365d 35565 4.3 1519 3.4 1221
5-11 2x 365d 36394 4.2 1541 4.2 1175

Maryclerc B Champion Silvia

EX-92-CAN EX-94-MS 10*
6-01 2x 365d 40318 4.3 1744 3.2 1303
Life: (4 Lacs) 194130 4.6 1801 2.9 1127

Gen-I-Beq Convincer Silver

VG-88-CAN VG-MS 15*
2-02 2x 365d 25867 3.6 928 3.2 820

Glen Drummond Splendor

VG-86-2YR-CAN 36*
4-10 2x 314d 26510 4.2 1124 3.2 840

Glen Drummond Aero Flower

VG-88-CAN 18*
2-03 2x 326d 25622 4.0 1032 3.4 882

Glen Drummond Shower-ET EX-CAN 13*

4-10 2x 365d 28583 4.8 1380 3.6 1016

Glen Drummond S C Jo Beth

EX-2E-CAN 7*
10-3 2x 365d 25368 3.8 970 2.9 747
Life (6 Lacs): 141637 4.2 5994 3.2 3593

Grand Champion Brant-Wentworth 1984

Glen Drummond Matt Beth VG-85 4*

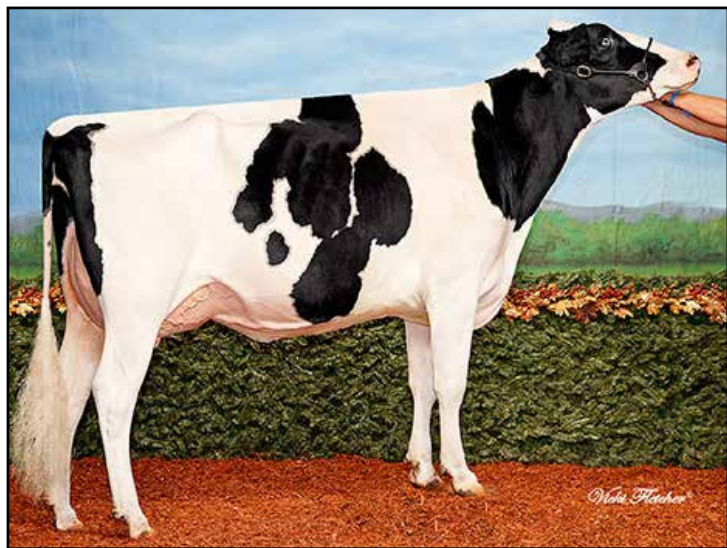
11-10 2x 365d 25038 3.7 935
Life (5 Lacs): 105953 4.1 4295

Glen Drummond Marquis Beth VG-CAN

4-08 2x 365d 15964 4.7 754
Life (8 Lacs): 112688 4.2 4766

Ferglynn Rag Apple Bertha VG-CAN 3*

7-00 2x 365d 27796 4.7 1303
Life (9 Lacs): 208857 4.0 8344



GOLDIE SANCHEZ CHARDONAY-ET EX-91
2ND DAM OF LOT 38



R-Z BAXTER CARAMEL VG-89-2YR DOM
3RD DAM OF LOT 38

38

TWO #1 EMBRYOS

- Worldwide Export Available

Holstein Plaza Contacts:

Steve Mower +1 240-520-5906

Jennifer Dingbaum +1 320-250-2412

Cookiecutter Petron Halogen

3008710387 *TV *TL *TY *TD

PTA +1063M +59F +41P 72%R 8/13

PTA +8.1PL 2.41SCS +4.1DPR

PTA +2.86T +3.11UDC +1.34FLC 72%R

GTPI +2546G

Navs-SG Syrah-ET

71455199 Born: April 7, 2012

GPA-LPI+2769 / DGV+2841 / Conf+12

GTPI+2268 +1669M +60F +51P +3.13T

Welcome Super Petrone-ET

69207641 *TR *TV *TL *TY *TD

PTA +1105M +47F +30P 75%R 8/13

PTA +2.25T +2.32UDC +1.67FLC 75%R

GTPI +2296G

Cookiecutter MOM Halo-ET

3007069733 Very Good-88 EX-MS @ 2-09

2-00 3x 365d 35410 5.2 1832 3.5 1241

Misty Springs Supersonic-ET

11113974C *TY

PTA +1488M +79F +50P 77%R 8/13

PTA +2.44T +1.66UDC +1.53FLC 76%R

GTPI +2270G

Goldie Sanchez Chardonay-ET

140567322 Excellent-91

GTPI+1892 +3.56T +3.13UDC +2.89FLC

2-03 2x 305d 20160 3.8 763 3.2 636

• Due in July and will show this fall!

• 3rd Jr 2-Yr-Old, Eastern Fall Nat'l 2012

• 4th generation VG-89 two-year-old

3rd thru 8th Dams

R-Z Baxter Caramel VG-89-2YR DOM

2-04 3x 365d 40291 4.6 1858 3.6 1442

Ralma Goldwyn Carmel-ET

EX-92 GMD DOM

2-00 3x 365d 34980 4.0 1404 3.7 1288

2-00 3 365 34980 4.0 1404 3.7 1288

Ralma Christmas Cookie-ET

VG-89 EX-MS DOM

2-06 2x 365d 28710 4.5 1297 3.4 967

Ralma Christmas Fudge-ET

VG-88 GMD DOM

2-03 2x 365d 31810 4.1 1292 3.2 1027

Ralma Juror Faith EX-91 GMD DOM

4-02 2x 365d 47860 4.5 2165 3.1 1497

Life: 1352d 133520 4.5 5986 3.3 4358

Ralma Leadman Fashion VG-89

4-10 2x 365d 40710 3.7 1494 3.0 1232

Life: 1243d 117710 3.6 4295 3.2 3743



KHW SBOX AVENA-ET
DAM OF LOT 39



KHW REGIMENT APPLE-RED EX-95 DOM
MATERNAL SISTER TO DAM OF LOT 39

39

Holstein Plaza Contacts:

Steve Mower +1 240-520-5906
Jennifer Dingbaum +1 320-250-2412

Kulp-Dale Golden PP-Red-ET

70805600 *RC *PP *TL *TD
PTA +748M +17F +41P 72%R 8/13
PTA +2.9PL 2.82SCS +0.7DPR
PTA +2.08T +1.94UDC +1.64FLC 71%R
GTPI +1968G

KHW Sbox Avena-ET

140960376 Very Good-86 VG-MS 2YR
GTPI+1963 -836M +50F +10P +3.12T

Maternal sister to Avena

KHW Regiment Apple-Red-ET EX-95 DOM

4-01 2x 365d 35750 4.7 1682 3.7 1314
Life: 1972d 158680 4.8 7683 3.8 6034

- Grand Champ, Grand Int'l R&W Show 2011
- Unanimous All-American Jr 2-Yr-Old 2006
- All-American R&W Jr 2-Yr-Old 2006
- HHM All-American Jr 3-Yr-Old 2007
- Nom All-American R&W 5-Yr-Old 2009
- Res Grand Champ, Royal Winter R&W 2009
- HI World Champion R&W Cow 2010

FIVE #1 EMBRYOS

• Worldwide Export Available

Sandy-Valley Colt P-Red-TW

68731810 *PO *TV *TL *TY *TD
PTA +758M +9F +27P 74%R 8/13
PTA +1.88T +2.12UDC +1.44FLC 76%R
GTPI +1971G

Kulp-Dale Gold Rush-ET

65793924 Very Good-86 *RC *PO
2-03 2x 249d 16609 4.0 670 3.4 651 inc.

Dream-Prairie Shadow Boxer

139086241 *TR *TV *TL *TY *TD
PTA -23M +48F +23P 99%R 8/13
PTA +2.05T +1.40UDC +1.94FLC 98%R
GTPI+1848G

Kamps-Hollow Altitude-ET

129136431 Excellent-95 EEEEE 2E DOM
GTPI+2052 -415M +34F +15P +3.20T
2-00 2x 305d 24510 3.8 922 3.7 904
7-00 2x 305d 34450 4.5 1562 3.4 1163

• Dam to proven bulls Advent, Jotan & Acme

3rd thru 7th Dams

Clover-Mist Alisha-ET *RC EX-93 3E DOM

8-07 2x 365d 36920 4.2 1553 3.4 1258
Life: 2999d 226470 4.7 10659 3.6 8149

Clover-Mist Augy Star-ET *RC

EX-94 4E DOM
7-10 3x 365d 43140 5.0 2136 3.3 1421

Life: 2486d 206250 4.7 9793 3.5 7187

D-R-A August EX-96 EEEE 4E DOM

8-05 2x 365d 27460 4.3 1187 3.2 871
Life: 3443d 190200 4.4 8281 3.3 4457

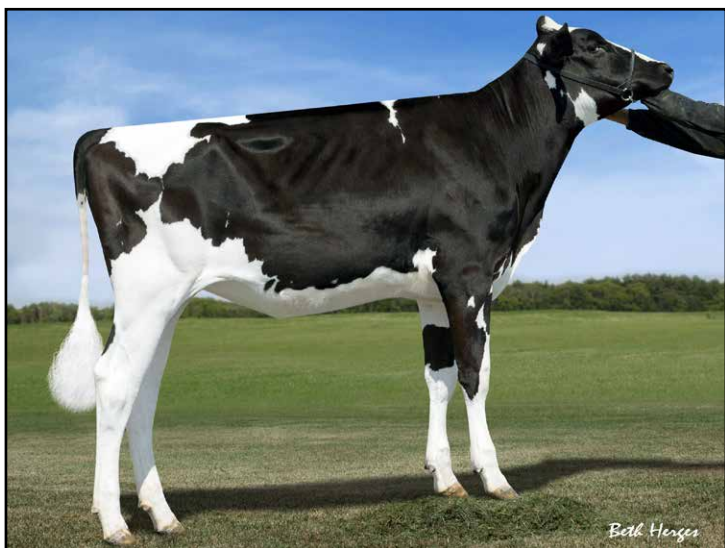
• Nominated All-American Aged Cow 1986

D-R-A Ideal Precious Leader EX-90 2E

7-06 2x 358d 20090 3.9 787 3.4 675

D-R-A Princess Lad Leader EX-90 3E

9-05 2x 305d 19160 4.2 809



R-E-W GOLD CHIP DELIGHT-ET
DAM OF LOT 40



REGANCREST-BH DELICA-ET VG-88 VEVVV
3RD DAM OF LOT 40

40

FIVE #1 EMBRYOS

• Worldwide Export Available

Holstein Plaza Contacts:

Steve Mower +1 240-520-5906

Jennifer Dingbaum +1 320-250-2412

Coyne-Farms Jacey CRI-ET

70541519 *TV *TL *TY *TD

PTA +1837M +69F +67P 71%R 8/13

PTA +831NM\$ +4.9PL 2.49SCS +1.9DPR

PTA +2.74T +2.26UDC +2.34FLC 75%R

GTPI +2487G

R-E-W Gold Chip Delight-ET

71588852

Born: April 19, 2012

GTPI+2193 +666M +34F +21P +3.50T

Regancrest AltaIota-ET

61898306 GM 8/11 *TV *TL *TY

PTA +1001M +77F +49P 98%R 8/13

PTA +2.24T +1.84UDC +1.44FLC 95%R

GTPI +2187G

Coyne-Farms Mass Jill-ET

68677629

2-03 3x 183d 14679 2.7 399 3.0 436 inc.

Mr Chassity Gold Chip-ET

140145553 EX-90 *TR *TV *TL *TY *TD

PTA +678M +34F +13P 77R 8/13

PTA +3.85T +3.06UDC +3.05FLC 77%R

GTPI +2053G

Regancrest-BH Super Delish

66625310 Good Plus-83 @ 2-10

GTPI+2030 +885M +16F +19P +2.32T

3rd thru 14th Dams

Regancrest-BH Delica-ET VG-88-3YR

3-05 3x 365d 31810 3.5 1121 2.9 931

Windsor-Manor Z-Delight-ET EX-92 EX-MS

3-08 2x 365d 40820 3.8 1543 3.2 1297

Windsor-Manor Rud Zip

EX-95 3E GMD DOM

4-07 2x 365d 39230 3.8 1490 3.1 1224

Windsor-Manor Jolt Zippy EX-90 3E

7-07 2x 361d 34090 3.7 1255 2.9 987

Life: 2559d 194060 3.8 7368 3.2 6234

Windsor-Manor Che Zipper GP-83 VG-MS

5-03 2x 365d 36410 3.1 1127 2.8 1029

Life: 1846d 167380 3.2 5368 2.9 4907

Windsor-Manor Star Zara EX-91 2E GMD

6-01 2x 365d 41590 3.5 1453 3.2 1315

Life: 2421d 204030 3.7 7450 3.3 6657

Windsor-Manor Melvin Zebra

VG-85 VG-MS

3-08 2x 365d 27820 3.8 1050 3.3 907

Del-Myr Tony Zadie VG-87

2-03 2x 365d 23600 3.5 835 3.4 797

Big-Sinks Jerry Zinna Addie VG-85

3-01 2x 365d 22650 3.0 673 3.1 710

Big-Sinks Elevation Maym Zinna

EX-90 2E GMD

7-10 2x 365d 27240 3.9 1075

Big-Sinks Bootmaker Ariel Maym

VG-85 GMD

4-00 2x 365d 23510 3.5 812

Emperor Alice Ariel VG-85 GMD

Life: 2754d 169080 3.6 6155



MS VELVET EPIC VENA
DAM OF LOT 41



DEBOER GLDWN SNOW VELVET-ET EX-93 EX-MS
2ND DAM OF LOT 41

41

FOUR #1 and 1 #2 EMBRYOS

• Worldwide Export Available

Holstein Plaza Contacts:

Steve Mower +1 240-520-5906

Jennifer Dingbaum +1 320-250-2412

S-S-I Tape Overbay

3009554422 *TV *TL *TY *TD

PTA +1611M +79F +61P 72%R 8/13

PTA +823NM\$ +5.9PL 2.66SCS +0.8DPR

PTA +2.38T +2.51UDC +0.83FLC 72%R

GTPI +2380G / gRZG+161

Ms Velvet Epic Vena

71494796 Born: July 4, 2012

GTPI+2018 +1007M +54F +30P +2.67T

Pine-Tree Brianne Tape-ET

69169727 *TR *TV *TL *TY *TD

PTA +945M +54F +40P 73%R 8/13

PTA +1.82T +1.69UDC +0.67FLC

GTPI +2235G

Our-Favorite Okilanee-ET

140437171 Good Plus-83 VG-MS

2-11 2x 305d 24050 4.1 998 3.4 812

Genervations Epic-ET

11104016C *TV *TL *TY *TD

PTA +1785M +53F +54P 76%R 8/13

PTA +2.59T +1.97UDC +2.53FLC 75%R

GTPI +2332G

DeBoer Gldwn Snow Velvet-ET

64811764 Excellent-93 EX-MS @ 5-07

3-02 2x 305d 26170 3.9 1029 3.5 911

2-01 2x 306d 20682 3.9 818 3.5 722

• All-American Jr 3-Yr-Old Cow 2010

• All-Canadian Jr 3-Yr-Old Cow 2010

• 1st Jr 3-Yr-Old, International Show 2010

• HM Int Champ, Royal Winter Fair 2010

3rd thru 5th Dams

DeBoer Mort Snow Violet-ET VG-85 DOM

2-01 2x 365d 33400 4.3 1450 3.4 1139

DeBoer Fred Snow Angel

EX-90 GMD DOM

3-04 2x 340d 39900 5.1 2028 3.5 1407

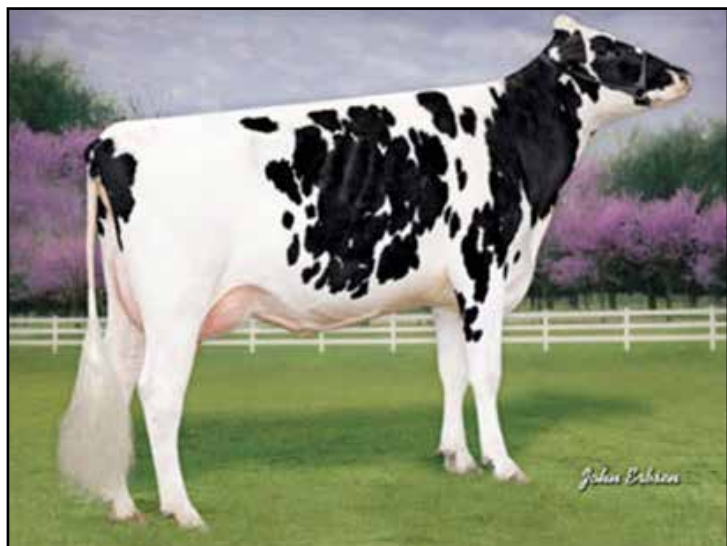
Life: 2481d 178890 5.0 9007 3.2 5702

DeBoer Highlight Snowstorm

VG-85 GMD DOM

4-00 2x 365d 34910 6.3 2209 3.3 1164

Life: 2536d 211440 5.4 11380 3.2 6832



MS APPLES ALEXIS-ET *RC VG-87-2YR
DAM OF LOT 42



KHW REGIMENT APPLE-RED EX-95 DOM
2ND DAM OF LOT 42

42

Holstein Plaza Contacts:

Steve Mower +1 240-520-5906
Jennifer Dingbaum +1 320-250-2412

Kulp-Dale Golden PP-Red-ET

70805600 *RC *PP *TL *TD
PTA +748M +17F +41P 72%R 8/13
PTA +2.9PL 2.82SCS +0.7DPR
PTA +2.08T +1.94UDC +1.64FLC 71%R
GTPI +1968G

Ms Apples Alexis *RC

140532308 Very Good-87-2YR VG-MS *CV
GTPI+1942 +2.77T +2.59UDC +2.35FLC
2-03 2x 365d 31102d 5.0 1522 3.5 1093

FIVE #1 EMBRYOS

• Worldwide Export Available

Sandy-Valley Colt P-Red-TW

68731810 *PO *TV *TL *TY *TD
PTA +758M +9F +27P 74%R 8/13
PTA +1.88T +2.12UDC +1.44FLC 76%R
GTPI +1971G

Kulp-Dale Gold Rush-ET

65793924 Very Good-86 *RC *PO
2-03 2x 249d 16609 4.0 670 3.4 651 inc.

Picston Shottle-ET

GBR 598172 EX-95 GM 12/11 *TV *TL *TY
PTA +995M +27F +49P 99%R 8/13
PTA +2.45T +1.93UDC +1.65FLC
GTPI +1971G

KHW Regiment Apple-Red-ET

135511521 Excellent-95 EEEEE DOM
GTPI+1947 +3.76T +3.11UDC +3.95FLC
4-01 2x 365d 35750 4.7 1682 3.7 1314
7-00 2x 365d 33280 5.0 1654 3.6 1191
5-03 2x 365d 30810 5.0 1527 3.9 1212
2-02 2x 365d 28930 4.5 1297 3.6 1033
Life: 1972d 158680 4.8 7683 3.8 6034

APPLE!

- Reserve Grand Ch, Int'l R&W Show 2013
- 1st 125,000 lb. cow, Grand Int'l R&W 2013
- Grand Ch, Grand Int'l R&W Show 2011
- Unanimous All-American Jr 2-Yr-Old 2006
- All-American R&W Jr 2-Yr-Old 2006
- HHM All-American Jr 3-Yr-Old 2007
- Nom All-American R&W 5-Yr-Old 2009
- Res Grand Ch, Royal Winter R&W 2009
- HI World Champion R&W Cow 2010
- \$1,000,000 Sale Topper Global Glamour 2008

3rd thru 8th Dams

Kamps-Hollow Altitude-ET

EX-95 EEEEE 2E DOM
7-00 2x 365d 39690 4.7 1849 3.5 1385
Life: 1844d 144460 4.4 6295 3.7 5288
• Dam to proven bulls Advent, Jotan & Acme
• Red Impact Cow of the Year 2009

Clover-Mist Alisha-ET *RC EX-93 3E DOM

8-07 2x 365d 36920 4.2 1553 3.4 1258
Life: 2999d 226470 4.7 10659 3.6 8149

Clover-Mist Augy Star-ET *RC

EX-94 4E DOM
7-10 3x 365d 43140 5.0 2136 3.3 1421
Life: 2486d 206250 4.7 9793 3.5 7187

D-R-A August EX-96 EEEE 4E DOM

8-05 2x 365d 27460 4.3 1187 3.2 871
Life: 3443d 190200 4.4 8281 3.3 4457

• Nominated All-American Aged Cow 1986

D-R-A Ideal Precious Leader EX-90 2E

7-06 2x 358d 20090 3.9 787 3.4 675

D-R-A Princess Lad Leader EX-90 3E

9-05 2x 305d 19160 4.2 809



FUTURECREST AFTERSHOCK TAHLIA VG-88-2YR
DAM OF LOT 43



SALEM GOLDWYN THERESA EX-94 EEEEE
2ND DAM OF LOT 43

43

Holstein Plaza Contacts:

Steve Mower +1 240-520-5906
Jennifer Dingbaum +1 320-250-2412

Regancrest-GV S Bradnick-ET

66625940 Very Good-87 *TR *TV *TL *TY *TD
PTA +1366M +15F +35P 77%R 8/13
PTA +1.0PL 3.01SCS -2.4DPR
PTA +4.05T +3.34UDC +2.92FLC 77%R
GTPI +1950G

Futurecrest Aftershock Tahlia

11097298 Very Good-88-2YR 89-MS
GLPI+2202 +14MS +14F&L +16Conf.
2-03 2x 252d 18964 3.8 730 3.2 604
• 1st Sr 2-Yr-Old & H.M. Int. Champion
Ontario Summer Show 2013
• Res. Int. Champion Autumn Opp. 2013
• Sells as Lot 1 in the Sale of Stars 2013

FIVE #1 EMBRYOS

• Worldwide Export Available

Gen-Mark Stmatic Sanchez

134422312 *TR *TV *TL *TY *TD
PTA +955M +3F +23P 99%R 8/13
PTA +3.06T +2.02UDC +2.57FLC
GTPI +1691G

Regancrest Breya-ET

62496852 Very Good-88 DOM
2-02 2x 365d 31960 3.6 1164 3.0 965

Ms Atlees Sht Aftershock-ET

65249839 *TV *TL *TY *TD
PTA +499M +26F +4P 99%R 8/13
PTA +3.19T +2.54UDC +2.21FLC
GTPI +1788G

Salem Goldwyn Theresa

7665977 Excellent-94 EEEEE
2-03 2x 305d 31274 3.7 1149 3.3 1021
3-05 2x 365d 40840 4.1 1687 3.0 1219
5-02 2x 365d 38501 4.4 1704 2.8 1069

Theresa!

- All-Ontario Jr. 3-Yr, Jr. 1-Yr, 4-H Jr. 1-Yr
- All-Canadian Jr. 3-Yr, 4-H Jr. 1-Yr
- Int. Champion Royal Winter Fair 2009
- 1st Jr. 3-Yr Royal Winter Fair 2009
- HM Grand Ont. Spring Discovery 2009
- HM Jr. Ont. Discovery 2007

3rd thru 8th Dams

Veazland-R Bstar Tabby

EX-CAN 2E 6*
2-00 3x 305d 26850 3.3 886 3.1 827
4-07 2x 305d 25737 3.5 895 3.1 802

- Res. All-Canadian 5-Yr, 4-Yr, Sr. 3-Yr
- Res. All-American 5-Yr, Sr. 3-Yr
- Grand Champion Ont. Discovery 1996
- Res. Grand Ont. Spring 1996
- 2nd 4-Yr Royal Winter Fair 1996
- Grand Champion Lindsay Ex. 1997

Pinetree-R Rainy Thunder EX-90-USA 2E

7-01 2x 365d 28669 3.6 1045 3.1 904
Life: (8 Lacs) 186500 3.5 6616 3.1 5851

Grafco Orman Rosy VG-85

Life: (8 Lacs) 144758 4.2 802

Grafco Kingmaker Roxanne EX-91 4E

Life: (8 Lacs) 178167 4.1 7707

Grafco Golden Carla EX-90

TERMS and CONDITIONS

GENERAL:

- These terms are valid for all agreements made through this sale.
- The organization of the sale is done by Holstein Plaza, part of AMS Genetics International LLC.
- The party, which offers embryos in this sale will be named after this as the “seller” and the party who buys through this sale and gets the sale item assigned, will be hereinafter identified as the “buyer”.
- The organization will only act as an intermediary in the realization from a (purchase) agreement between seller and buyer.

HOW DOES THE SALE WORK:

- All embryos sell with reasonable starting bid.
- The bid price is the per embryo price. If a lot has four embryos and the price is \$500.00 that means the lot price is \$2,000.00.
- When you place a bid, you agree to pay for the item if you're the winning bidder.
- All embryos are froze DT unless otherwise noted in catalog.
- All embryos are available for immediate shipment unless otherwise noted in catalog.
- There are two ways of placing a bid: internet (www.holsteinplaza.com) or via one of the listed Holstein Plaza contact persons.
- The bids are made in US dollars.
- When you place a bid, you enter the maximum amount you're willing to pay for the item. The other bidders and the sale organization will not be able to see your maximum bid. Through this Proxy bidding system, the Holstein Plaza auction system will increase your bid to the next lowest price when another user bids on the same item. The proxy bidding process continues until your maximum bid amount is reached or the auction ends. Every bidder is bound to his bid.
- The sale is using the popcorn bid system/5-minute rule ([click here for more information on the popcorn bid system/5-minute rule](#)). Until that moment bids will be accepted.
- All risks of the embryos are the responsibility of the buyer once the embryos are delivered to the buyer.
- The transportation of embryos from the seller to the buyer will take place as soon as possible after the sale, but not before complete payment as invoiced from AMS Genetics is received from the successful buyer.
- AMS Genetics will coordinate the paperwork and transfers with Holstein.

PAYMENT:

- Payment for all purchases is due within ten days of sale.
- Sale invoices will be sent via e-mail or fax following the conclusion of the sale.
- Embryo release forms are issued once proper payment has been received and processed by AMS Genetics.
- Payment will not be released to the seller until AMS Genetics has received proper transfer paperwork.
- Holstein Plaza charges a buyer's commission of \$50 per embryo to include all necessary paperwork; note, this fee does not include shipping.
- International buyers are responsible for shipping the embryos. Buyers will be contacted after the sale about their wishes and requirements for exporting the embryos.
- All embryos needing international shipment will be charged a flat fee of \$150 per lot for export documentation.
- AMS Genetics can handle export and shipping. In case export is being done through AMS Genetics an additional \$50 export fee per embryo will be charged. This flat fee does not cover transport. Buyer should arrange shipping within 60 days of the ending sale date.

EXCLUDING LIABILITY:

- The organization cannot be held responsible for errors on the internet site, sale catalog or in the advertisements.
- The organization cannot be held responsible for visual or non visual regardless the size or nature of such defect of the sold item.
- The organization does not take any responsibility for damage to persons or cases, which has arisen because of or connected to the sale.
- The cow indexes mentioned therein have been calculated or converted by the herdbook in the country the donor cow is housed in accordance with the current methods. All official pedigrees of sale animals can be seen.
- All frozen embryos are rated first class by official and registered ET veterinarians unless stated different on the website. In case embryos sold as first class after thawing turn out as class two or lower and not end in a pregnancy, the seller will be responsible for a refund, either in the form of an embryo with similar pedigree value or the purchase amount for the embryo. It is of vital importance that any claim is accompanied with an official statement in English from a recognized ET veterinarian. This should be sent to Holstein Plaza.
- Every bidder and seller is held to conform to the auction conditions. The act of bidding and consigning implicates knowledge and acceptance of these conditions.
- The organization can never be held responsible in case the embryos cannot be exported no matter what reason.